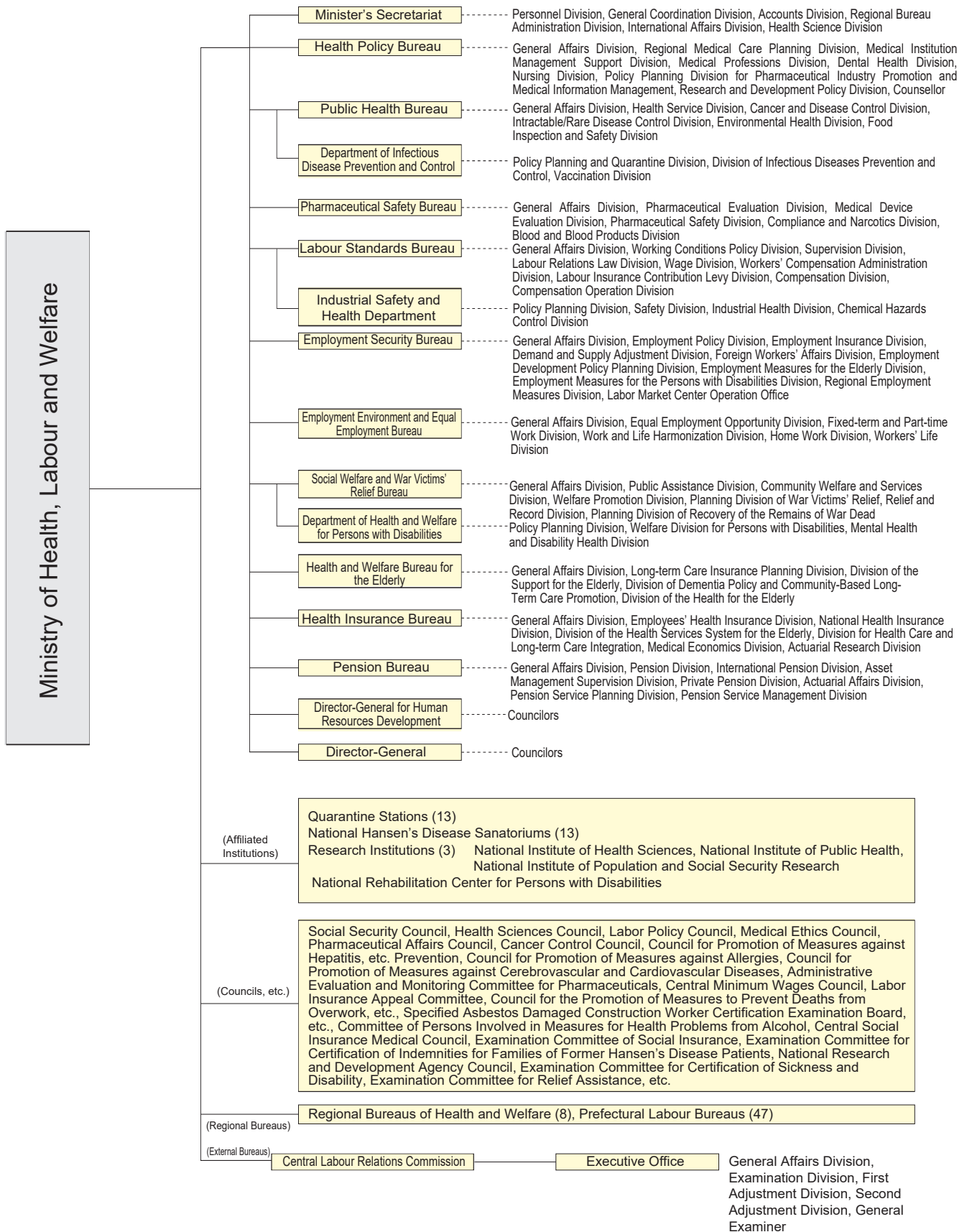


4. Structure of the Ministry of Health, Labour and Welfare

Organization Chart of the Ministry of Health, Labour and Welfare (As of April 1, 2025)



5. List of Major Health, Labour and Welfare Statistical Surveys, etc.

1. Population, Health and Welfare in General

Survey Name	Objectives	Matters	Target	Frequency	Time of Release
Vital Statistics (Fundamental statistical survey) Councilor, Director-General for Statistics, Information System Management and Industrial Relations Vital, Health and Social Statistics Office	Identify vital events in Japan and obtain a basic data source for population and policy making on health, labour and welfare.	Total events of live births, deaths, foetal deaths, marriages and divorces	The total events of live births, deaths, marriages, divorces, and foetal deaths notified in accordance with "Family Registration Law" and "Provisions Regarding Notification of Stillbirths"	Monthly	Prompt Vital Statistics Report: Two months after the survey month Monthly Vital Statistics Report: Five months after the survey month Monthly Vital Statistics Report (preliminary data): Early in June of the year after the survey year Annual Vital Statistics of Japan (final data): September of the year after the survey year
Comprehensive Survey of Living Conditions (Fundamental statistical survey) Councilor, Director-General for Statistics, Information System Management and Industrial Relations Household Statistics Office	Examine basic matters of people's life, including health, medical care, welfare, pension, and income to obtain basic information necessary for planning and formulating policies related to administrative duties under the jurisdiction of the Ministry of Health, Labour and Welfare.	Household occupation/structure/type, household expenses, enrollment in medical insurance, conditions of household members requiring long-term care, conditions of main caregivers, use of long-term care services, employment status, enrollment in and receipt of public pensions, inpatient/outpatient care, perceived health, subjective symptoms, income amount by source, taxation status, daily living awareness, current savings, current debts, etc.	Households and household members nationwide (Among the districts stratified and randomly sampled from population census districts with suffix numbers 1 and 8, all households and household members within 5,530 districts for large-scale survey years or 1,106 districts for intermediate years)	Annual The most recent large-scale survey was conducted in 2022	Released immediately after compilation
Longitudinal Survey of Newborns in the 21st Century (General statistical survey) Councilor, Director-General for Statistics, Information System Management and Industrial Relations Household Statistics Office	Continuously observe the actual situation and changes over time of children born in 2010, and verify generational differences to obtain basic information for planning, formulating, and implementing health, labour and welfare administrative measures such as declining birthrate measures.	Composition of the family, employment status, child-rearing awareness, situation of children, etc.	All children born nationwide during the period from May 10 to 24, 2010 (For the survey on newborns in 2001 targeting all children born nationwide between January 10 and 17, 2001, and between July 10 and 17, 2001, the 16th survey (age 16) and subsequent surveys were conducted as a joint survey with the Ministry of Education, Culture, Sports, Science and Technology as the implementing entity)	Annual	Released immediately after compilation
Longitudinal Survey of Adults in the 21st Century (Continuous Survey on the Living Conditions of the Living Conditions of the People) (General statistical survey) Councilor, Director-General for Statistics, Information System Management and Industrial Relations Household Statistics Office	Obtain basic information for planning, formulating, and implementing health, labour and welfare administrative measures such as declining birthrate measures by continuously observing the actual situation among the survey target males and females and changes over time in their attitudes regarding marriage, childbirth, and employment, etc.	Family status, health conditions, status of employment status, current motivation to work, use of support systems for balancing work and child-rearing, etc.	Males and females and their spouses aged 20 to 29 as of the end of October 2012 (The survey on persons who became adults in 2002 targeting males and females and their spouses aged 20 to 34 as of the end of October 2002 ended in 2015 (the 14th survey))	Annual	Released immediately after compilation

Survey Name	Objectives	Matters	Target	Frequency	Time of Release
Longitudinal Survey of Middle-aged and Elderly Persons (Continuous Survey on the Living Conditions of Middle-aged and Elderly Persons) (General statistical survey) Councilor, Director-General for Statistics, Information System Management and Industrial Relations Household Statistics Office	Track middle-aged and elderly males and females nationwide including the baby boom generation, continuously examine the process of changes in the mental aspects, and facts on their health, employment, and social activities, and identify changes in their behavior or association between events, to obtain basic information for planning, formulating, and implementing health, labour and welfare administrative measures such as measures for the elderly.	Family status, health conditions, employment status, social and other activities, housing and family income and expenditure status, etc.	Males and females aged 50 to 59 as of the end of October 2005 nationwide	Annual	Released immediately after compilation
Survey on the Redistribution of Income (General statistical survey) Director-General Office of Counsellor for Policy Planning support and Evaluation	Identify what impact benefits and burdens under the social security system and burdens under the taxation system have on income redistribution to clarify the degree of dissemination and effect of social security measures.	Gender, birth year and month, contributions (automobile tax/light vehicle tax), benefits received (life insurance or non-life insurance payments), receipt of medical care, long-term care benefit payments, use of day care centers, etc.	Households and household members nationwide (Approximately 13,000 households were sampled)	Every three years The most recent survey was conducted in 2023	Released immediately after compilation
Survey on Public Pension Enrollment (General statistical survey) Pension Bureau Research Office, Pension Service Planning Division	The survey aims to obtain basic information for the administration of pensions and considering future pension systems by examining the status of enrollment in public pensions for each household member to identify the status of enrollment in and receipt of public pensions, households status, employment status, and level of awareness about public pensions.	Status of enrollment in and receipt of public pensions, household status, employment status, and level of awareness about public pensions, etc.	Household members aged 15 and over nationwide (Among the districts subject to the Comprehensive Survey of Living Conditions, household members aged 15 and over in all households (approximately 90,000 households) in 1,800 districts)	Every three years The most recent survey was conducted in 2022	Released immediately after compilation
Survey on the Insured of National Pension (General statistical survey/administrative statistics) Pension Bureau Research Office, Pension Service Planning Division	The survey aims to clarify the actual situation of the category-1 insured persons of the National Pension by condition of payment of pension premium to obtain information necessary for administration of the National Pension and considering future pension systems, including the insured persons' level of awareness about public pensions and reason for not paying premiums.	Employment and educational status, household status (consumer expenditure, life insurance expenditure, etc.), payment status of the National Pension premiums, awareness of the National Pension system, income status of the insured and the household, etc.	Category-1 insured persons of the National Pension and household members belonging to their households nationwide (Approximately 120,000 randomly selected persons (of which, approximately 60,000 were directly surveyed))	Every three years The most recent survey was conducted in 2023	Released immediately after compilation

2. Social Welfare Statistics

Survey Name	Objectives	Matters	Target	Frequency	Time of Release
Report on Social Welfare Administration and Services (General statistical survey) Councilor, Director-General for Statistics, Information System Management and Industrial Relations Administrative Report Statistics Office	Identify quantitatively the actual situation of administration in prefectures, designated cities, and core cities in association with the enforcement of social welfare-related laws and regulations, to obtain basic information for the operation of social welfare administration.	Performance of social welfare administration, etc. in each prefecture, designated city, and core city	Prefectures, designated cities, and core cities	Monthly/every fiscal year	Late January Monthly (approximate figures)
Survey of Social Welfare Institutions (General statistical survey) Councilor, Director-General for Statistics, Information System Management and Industrial Relations Social Statistics Office	Identify the number of social welfare institutions, the status of residents and workers, etc. nationwide, to obtain basic information for the promotion of social welfare administration.	Administrative bodies, capacity, residents, and workers, etc., of institutions	All social welfare institutions, etc. nationwide	Annual	Late December
Survey of Regional Child Welfare Services (General statistical survey) Child and Family Policy Bureau General Affairs Division	Identify the actual situation of efforts made, etc., by municipalities (including special wards) for child welfare services focused on day care, to obtain basic information for the promotion of child welfare measures which respond accurately to diversified demands.	Questionnaire on municipal services Status of flexible adjustments of day-care centers capacity, status of introduction of nursery teachers working on a short-time basis, status of outsourcing child-care fee collection operations to private individuals, etc.	Municipalities, special wards	Annual	Late September

Survey Name	Objectives	Matters	Target	Frequency	Time of Release
Survey of Institutions and Establishments for Long-term Care (General statistical survey) Councilor, Director-General for Statistics, Information System Management and Industrial Relations Social Statistics Office	Obtain basic information on infrastructure development, etc., focused on the provision of long-term services by identifying long-term care service provision systems nationwide and the content of such services, etc.	(1) Facilities covered by long-term care insurance Establishing/administrative bodies, capacity, number of residents, number of workers, and status of rooms, etc. (2) In-home service establishments, etc. Establishing/administrative bodies, number of users, number of workers, etc.	All institutions and establishments covered by long-term care insurance nationwide	Annual	Late December
Statistics of Long-term Care Benefit Expenditures (Administrative statistics) Councilor, Director-General for Statistics, Information System Management and Industrial Relations Social Statistics Office	Identify the status of benefit expenditures, etc. for receiving long-term care services, to obtain basic information necessary for the smooth operation of the long-term care insurance system, including the revision of long-term care fees.	Claims of long-term care benefit expenditure and claims of comprehensive preventive long-term care and daily life support service expenditure, etc. Number of beneficiaries by type of long-term care service, and number of cases, number of times, number of units, and expense by long-term care service content	All claims of long-term care benefit expenditure, etc. examined by the Federation of National Health Insurance Associations in each prefecture that are accumulated in the comprehensive long-term care insurance database	-	Monthly report/fiscal year report: Released immediately after compilation
Briefing Survey on Economic Conditions in Long-term Care	Identify the financial conditions of each service institution/establishment, to obtain basic information necessary for the revision of long-term care fees.	Status of provision of long-term care insurance service, status of rooms and equipment, allocation of personnel, wages of personnel, status of income, and status of revenue and expenditure, etc.	Designated long-term care institutions and establishments	Every three years (The most recent survey was conducted in 2019)	Released by the Subcommittee of Long-Term Care Service Fee in the Social Security Council
Fact-finding Survey on Economic Conditions in Long-term Care	Identify the financial conditions of each service institution/establishment, to obtain basic information necessary for the revision of long-term care fees.	Status of provision of long-term care insurance service, status of rooms and equipment, allocation of personnel, wages of personnel, status of income, and status of revenue and expenditure, etc.	Designated long-term care institutions and establishments	Every three years (The most recent survey was conducted in 2020)	Released by the Subcommittee of Long-Term Care Service Fee in the Social Security Council
Survey on Working Conditions of Long-term Care Workers	Evaluate the situation of treatment of long-term care workers and effects of the addition for improved treatment of long-term care personnel, and obtain basic information for the next long-term care fee revision.	Status of wages, status of acquisition of addition for improved treatment of long-term care personnel/addition for improved special treatment of long-term care personnel, etc., status of improved treatment other than increase in wages, etc., and workers' working forms, working hours, qualification acquisition status, and base salary amount, etc.	Long-term care welfare facilities, long-term care health facilities, long-term care sanatorium medical facilities, long-term care hospitals, home-visit long-term care establishments, outpatient long-term care establishments (including community-based outpatient long-term care), outpatient rehabilitation establishments, establishments of daily life long-term care for the elderly in specified facilities, establishments of multifunctional long-term care in small group homes, establishments of communal daily long-term care for dementia patients, and in-home long-term care support establishments	The most recent survey was conducted in 2021	Released by the Subcommittee of Long-Term Care Service Fee in the Social Security Council

3. Health Statistics

Survey Name	Objectives	Matters	Target	Frequency	Time of Release
Report on Public Health Administration and Services (General statistical survey) Councilor, Director-General for Statistics, Information System Management and Industrial Relations Administrative Report Statistics Office	To perceive the actual situation of administration of sanitation in each prefecture, designated city, and core city under laws and orders related to sanitation, in order to gain basic data for administrative management of sanitation.	Items related to mental health and welfare, nutrition, sanitary inspection, environmental health, food sanitation, veterinary sanitation, medical monitoring, pharmaceutical affairs, maternal protection, specific intractable or pediatric chronic diseases, and rabies control	Prefectures, designated cities, and core cities	Every fiscal year/every other year (The most recent biennial report was conducted in 2024)	Fiscal year report: Late October Biennial report: Mid-July

Survey Name	Objectives	Matters	Target	Frequency	Time of Release
Report on Regional Public Health Services and Health Promotion Services (General statistical survey) Councilor, Director-General for Statistics, Information System Management and Industrial Relations Administrative Report Statistics Office	To perceive the development, etc. of health care policy based on regional characteristics with a view to health management and improvement of local residents by public health center and municipality that implement the policy, thereby obtaining basic data for efficient and effective promotion of the regional health care policy by government and local public agencies.	Status of maternal and child care service implementation, vaccination, communication and coordination, etc. among health centers, placement of personnel and health center personnel assistance to municipalities, and implementation of health promotion services, etc.	Public health centers and municipalities	Every fiscal year	Mid-March
Survey of Medical Institutions (Fundamental statistical survey) Councilor, Director-General for Statistics, Information System Management and Industrial Relations Health Statistics Office	Clarify the actual situation of the distribution and development of medical institutions and identify the clinical functions of medical institutions to obtain basic information for medical administration.	Static survey Name of facilities, establishing bodies, number of beds approved, clinical specialties, number of workers, status of implementation of medical treatment and examination, etc. Dynamic survey Name of facilities, location, establishing bodies, types of notifications and dispositions, number of beds approved, etc.	Static survey Hospitals and clinics nationwide Dynamic survey Medical institutions subject to notification or disposition under the Medical Care Act	Static survey: Every three years (The most recent survey was conducted in 2023) Dynamic survey: Monthly	Static survey Late November Dynamic survey (Annual report): Late September (Monthly report): Monthly (approximate figures at the end of month)
Hospital Report (General statistical survey) Councilor, Director-General for Statistics, Information System Management and Industrial Relations Health Statistics Office	Identify patients' use of hospitals and clinics with long-term care beds nationwide to obtain basic information for medical administration.	Number of inpatients, number of newly hospitalized patients, number of discharged patients, number of outpatients, etc.	Hospitals and clinics with long term care beds nationwide	Monthly	(Annual report): Late September (Monthly report): Monthly (approximate figures)
Statistics of Physicians, Dentists and Pharmacists (Administrative statistics) Councilor, Director-General for Statistics, Information System Management and Industrial Relations Health Statistics Office	Clarify the distribution of physicians, dentists, and pharmacists, by gender, age, business category, place of work, and medical specialty (excluding pharmacists), etc., to obtain basic information for health, labour and welfare administration.	Address, gender, birth date, business category, medical specialty (excluding pharmacists), and location of place of work, etc.	Physicians, dentists and pharmacists nationwide	Every two years (The most recent survey was reported in 2022)	Late December
Patient Survey (Fundamental statistical survey) Councilor, Director-General for Statistics, Information System Management and Industrial Relations Health Statistics Office	Clarify the attributes, situation at the time of hospitalization or hospital visits, and actual situation of names of injuries/diseases, etc. of patients using medical institutions (hospitals, and general and dental clinics) and estimate the number of patients by region, to obtain basic information for medical administration.	Patients' sex, situation of receiving medical care, medical fee, etc. payment method, distinction of inpatient/outpatient, referrals, types of beds, etc.	Patients using medical institutions nationwide (Approximately 6,500 hospitals, 6,000 clinics, and 1,300 dental clinics are sampled)	Every three years (The most recent survey was conducted in 2023)	Late December
National Health and Nutrition Survey (General statistical survey) Health Service Bureau Health Service Division	Clarify the actual situation of people's physical condition, dietary and nutritional intake, and life styles, to obtain basic information for comprehensive promotion of people's health.	Status of meals (skipping meals, eating out), food intake status (food name, amount consumed), height, weight, blood pressure, blood tests, number of walking steps, smoking, drinking, exercise habits, matters related to life styles, etc.	Households and household members nationwide (Approximately 5,700 households and 15,000 household members are sampled)	Annual	Released immediately after compilation
Statistics of Production by Pharmaceutical Industry (Fundamental statistical survey) Health Policy Bureau Policy Planning Division for Pharmaceutical Industry Promotion and Medical Information Management	Clarify the actual situation of production and import/export of pharmaceuticals, medical devices, quasi-pharmaceutical products, and regenerative medical products, to obtain basic information for pharmaceutical administration.	Production, shipment, monetary value and volume of end-of-the-month inventory by drug efficacy/use classification, etc.	Holders of marketing authorization for pharmaceuticals, quasi-pharmaceutical products, medical devices, and regenerative medical products	Monthly	Monthly report: 60 days from the day following the 15th of the month after the survey month Annual report: The following year

Survey Name	Objectives	Matters	Target	Frequency	Time of Release
Survey on Economic Conditions in Health Care (Survey on Health Care Facilities) (General statistical survey) Central Social Insurance Medical Council (Medical Economics Division, Health Insurance Bureau)	Clarify the actual situation of medical service operation, etc. at hospitals, general clinics, dental clinics, and health insurance-covered pharmacies, to prepare basic information on social insurance medical fees.	(Hospitals) Profit and loss, wages of regular employees by occupation, etc. (General clinics) Profit and loss, wages of regular employees by occupation, etc. (Dental clinics) Profit and loss, wages of regular employees by occupation, etc. (Health insurance-covered pharmacies) Profit and loss, wages of regular employees by occupation, etc.	Medical institutions providing social insurance medical care, etc. nationwide Hospitals: Sampling rate 1/3 General clinics: Sampling rate 1/20 Dental clinics: Sampling rate 1/50 Insurance-covered pharmacies: Sampling rate 1/25	Every two years The most recent survey was conducted in 2019	Early November
Survey on Economic Conditions in Health Care (Survey on Insurers) (General statistical survey) Central Social Insurance Medical Council (Actuarial Research Division, Health Insurance Bureau)	Identify the actual situation of financial conditions of medical insurance insures to prepare basic information on social insurance medical fees.	(Survey of land) Types of facilities, areas, acquisition costs, market values, etc. (Survey of directory-operated sanatoriums and health centers) Building areas, book values, number of users, operating income and expenses	Health insurance societies and mutual aid societies nationwide	Every two years The most recent survey was conducted in 2019	Early November
Patient's Behavior Survey (General statistical survey) Councilor, Director-General for Statistics, Information System Management and Industrial Relations Health Statistics Office	Clarify patients' perceptions and behaviors of medical services by surveying patients using medical institutions nationwide on the situation of receiving medical care and their satisfaction levels with the medical care they received, to obtain basic information for future medical administration.	Waiting time until consultation, duration of consultation, reasons why they chose the hospital, level of explanation received from the physician, wishes for future treatment/medical care, satisfaction level, etc.	Patients using general hospitals nationwide (Approximately 500 institutions)	Every three years The most recent survey was conducted in 2023	October (approximate figures) March (final figures)
Survey on Food Poisoning (Administrative statistics) Pharmaceutical Safety and Environmental Health Bureau Food Inspection and Safety Division	Identify the situation of occurrence of food poisoning patients and deaths from food poisoning to obtain basic information for food sanitation measures.	Type of household, business, facility, etc. that caused the food poisoning, date of onset, causative food, etiologic agent, number of patients, number of deaths, etc.	Health centers nationwide	Monthly	Mid-March
Meat Inspection and Other Information Return Survey (General statistical survey/administrative statistics) Pharmaceutical Safety and Environmental Health Bureau Food Inspection and Safety Division	Ensure the safety of meat by identifying the actual situation of processing operations for livestock and poultry conducted at slaughterhouses, etc., for human consumption and feeding back the data to the livestock production stage through prefectures, etc., and establish a system that enables the timely utilization of nationwide information, etc., in the promotion of public health administration by prefectures, etc., to obtain basic information for smooth promotion of administration.	Number of slaughterhouses, slaughter conditions, number of animals inspected for slaughter, number of poultry processing facilities, number of poultry processing sanitation managers, number of registered meat retailers, number of poultry inspected, number of rendering plants and seafood/poultry processing and storage facilities, etc., number of dead animal handling facilities, number of livestock barns and poultry houses	Prefectures, cities and special wards with health centers established (however, among the matters to be reported, slaughterhouses, number of animals slaughtered outside slaughterhouses, number of animals slaughtered at slaughterhouses, actual number of animals by disposal method, and number of animals by disease are reported by prefectures and cities with health centers established)	Annual	Released immediately after compilation

4. Employment Statistics

Survey Name	Objectives	Matters	Target	Frequency	Time of Release
Monthly Labour Survey (Fundamental statistical survey) National Survey	Clarify changes on national level in employment, wages, and hours worked at establishments with 5 or more regular workers.	Wages, hours worked, number of regular workers, types of regular workers, etc.	16 major industries according to the Japan Standard Industrial Classification (revised in October 2013), establishments with 5 or more regular workers	Monthly	Provisional report: Early in the second month after the survey month Final report: Late in the second month after the survey month
Prefectural Survey	Clarify changes by prefecture in employment, wages, and hours worked at establishments with 5 or more regular workers.	Same as the National Survey	Same as the National Survey	Same as the National Survey	The second month after the survey month, in principle
Special Survey	Clarify changes in employment, wage, and hours worked at small establishments with 1-4 regular workers.	Wages, hours worked, number of regular workers, years of service, etc.	16 major industries, establishments with 1-4 regular workers	Annual	December
Councilor, Director-General for Statistics, Information System Management and Industrial Relations Employment, Wage and Labour Welfare Statistics Office					
Survey on Employment Trends (General statistical survey)	The survey aims to clarify the actual situation of labour force mobility between industries, different size businesses, occupations, and regions by examining the status of employment, separation, and unfulfilled job openings within principal industries, individual attributes of employed and separated workers, and circumstances related to their employment and separation.	Establishments: Mobility of regular workers, unfilled job openings, etc. Employed workers: Employment path, previous employment status, period of unemployment, wage fluctuation, etc. Separated workers: Occupation, length of service, reason for separation, etc.	16 major industries according to the Japan Standard Industrial Classification (revised in October 2013), establishments with 5 or more regular workers, employees joining and leaving the surveyed establishments during the survey year	Twice a year	August for annual results, December for first half-year results
Councilor, Director-General for Statistics, Information System Management and Industrial Relations Employment, Wage and Labour Welfare Statistics Office					
Surveys on Employment Structure (General statistical survey) 2024: General Survey on Diversified Types of Employment	The survey aims to contribute to the promotion of employment policies that adequately address issues related to diversified types of employment by identifying the respective employment types of regular workers and non-regular workers from both establishments' and workers' sides, including their conscious aspects.	(Survey on establishments) Attributes of establishments, changes in worker ratios, etc., reason for utilizing workers other than regular workers, issues in utilizing workers other than regular workers, application status of various systems by employment type (Survey on individuals) Attributes of individuals, actual situation of employment, wages, various systems, satisfaction level, side jobs	(Survey on establishments) Establishments with 5 or more regular workers belonging to 16 major industries according to the Japan Standard Industrial Classification (revised in October 2013) (Survey on individuals) Workers employed at the above establishments	Irregular	Scheduled for September 2025
Councilor, Director-General for Statistics, Information System Management and Industrial Relations Employment, Wage and Labour Welfare Statistics Office					
Survey on Labour Economy Trend (General statistical survey)	Examine the impact of economic fluctuations and changes in labour supply/demand, etc. on employment and working hours, etc. as well as their future outlook and identify the direction of changes in the labour economy, etc. to be used as basic information for labour policies.	Trends in production/sales, employment, trends in working hours, number of regular workers, excess and deficiency of workers, number of unfulfilled job openings, status of implementation of employment adjustments, etc.	Private establishments with 30 or more regular workers belonging to 12 major industries according to the Japan Standard Industrial Classification (revised in October 2013)	Four times a year	March, June, September, December
Councilor, Director-General for Statistics, Information System Management and Industrial Relations Employment, Wage and Labour Welfare Statistics Office					

Survey Name	Objectives	Matters	Target	Frequency	Time of Release
General Survey on Labour Relations (General statistical survey) [1] Basic Survey on Labour Unions Councilor, Director-General for Statistics, Information System Management and Industrial Relations Employment, Wage and Labour Welfare Statistics Office	Examine the number of labour unions, number of labour union members, and status of affiliated organization system, etc. to clarify the actual situation of labour union organizations, including distribution of labour unions and union members by industry, region, and affiliated upper-level union, etc.	Type of labour union, applicable laws and regulations, number of labour union members, affiliated upper-level union system, etc.	Labour unions in all industries	Annual	December
[2] Status Survey on Labour Unions Councilor, Director-General for Statistics, Information System Management and Industrial Relations Employment, Wage and Labour Welfare Statistics Office	Clarify the actual situation of labour-management relations, including the actual situations of organizations and activities of labour unions, status of collective bargaining, conclusion of labour contracts, and labour disputes, and status of labour-management communications, etc.	(2024 Survey: Survey on Labour-Management Communications) (Survey on establishments) Matters related to attributes of establishments, matters related to labour-management communications in general, matters related to labour-management consultation bodies, matters related to workplace gatherings, matters related to complaint handling, matters related to the use of external institutions, etc., perception of labour-management relations (Survey on workers) Matters related to attributes of individuals, matters related to labour-management communications in general, awareness about labour unions, matters related to labour-management consultation bodies, matters related to treatment of individuals, etc.	(Survey on establishments) Private establishments with 30 or more regular workers belonging to 16 major industries (Survey on workers) Regular workers employed at the above establishments	Annual	June
Survey on Labour Disputes (General statistical survey) Councilor, Director-General for Statistics, Information System Management and Industrial Relations Employment, Wage and Labour Welfare Statistics Office	Clarify the status of labour disputes in Japan.	Total number of participants in disputes, number of members that participated in actions, duration by type of dispute action, number of members that participated in actions by type of dispute action, number of working days lost by type of dispute action, etc.	All disputes	Monthly	August
Fact-finding Survey on Home Work (General statistical survey) Employment Environment and Equal Employment Bureau Home Work Division	Identify the actual situation of home work to obtain basic information for promoting home work measures.	Consignment conditions, etc. from consignors Working conditions, etc. of home-workers	Sampled from consignors and home-workers nationwide using a specific method	(Every three years The most recent survey was conducted in 2023)	March of the survey fiscal year
Basic Survey of Gender Equality in Employment Management (The name of the survey changed from "Basic Survey on Employment Management of Women" in FY2007) (General statistical survey) Employment Environment and Equal Employment Bureau Equal Employment Opportunity Division	Identify the actual situation of employment management related to equal employment issues between males and females in major industries.	Matters related to employment status of women, including hiring, placement, and promotion, etc., in companies under the Equal Employment Opportunity Act, and provisions and operational status of child care/family care leave system, etc.	(Survey on companies) Private companies with 10 or more regular workers belonging to 16 major industries (Survey on establishments) Private establishments with 5 or more regular workers belonging to 16 major industries	Annual	Scheduled for July

Survey Name	Objectives	Matters	Target	Frequency	Time of Release
Basic Survey of Human Resources Development (General statistical survey)	Clarify the actual situation of ability development in companies, establishments, and workers in Japan to contribute to vocational ability development administration.	(Survey on companies) Company overview, expenses incurred for OFF-JT and self-development support, etc. (Survey on establishments) Establishment overview, implementation of education and training, human resource development, career building support, inheritance of skills, etc. (Survey on individuals) Workers' attributes, participation in education and training, implementation of self-development, career planning, etc.	(Survey on companies) Private companies with 30 or more regular workers in 15 major industries based on the Japan Standard Industrial Classification (Survey on establishments) Private establishments with 30 or more regular workers in 15 major industries based on the Japan Standard Industrial Classification (Survey on individuals) Regular workers employed at establishments subject to the survey on establishments	Annual	Scheduled for June
Director-General for Human Resources Development Office of Counsellor for Policy Planning					

5. Wage and Labour Welfare Statistics

Survey Name	Objectives	Matters	Target	Frequency	Time of Release
Basic Survey on Wage Structure (Fundamental statistical survey)	The survey aims at obtaining a clear picture of the wage structure of employees in major industries i.e., wage distribution by type of employment, type of work, occupation, sex, age, school career, length of service and occupational career, etc.	Matters related to establishments Number of workers by type of employment at establishments, number of regular workers across the entire company Matters related to workers sex, type of employment, type of work, school career, new graduate, age, length of service, class of position, occupation, occupational career, actual number of days worked, actual number of scheduled hours worked, actual number of overtime worked, monthly contractual cash earnings, overtime allowance, annual special cash earnings, status of residence	Private establishments with 5 or more regular workers belonging to 16 major industries (establishments with 5-9 regular workers are limited to those of companies with 5-9 regular workers), and public establishments with 10 or more regular workers and their workers	Annual	March
Councilor, Director-General for Statistics, Information System Management and Industrial Relations Wage and Labour Welfare Statistics Office					
General Survey on Working Conditions (General statistical survey)	Comprehensively examine working hour systems and wage systems, etc. at companies in major industries to clarify the current state of working conditions at private companies in Japan.	Matters related to attributes of companies, matters related to working hour systems, matters related to wage systems, etc.	Private companies with 30 or more regular workers belonging to 16 major industries	Annual	December
Councilor, Director-General for Statistics, Information System Management and Industrial Relations Wage and Labour Welfare Statistics Office					
Survey on Wage Increase (General statistical survey)	Identify the revision amount of wages and bonuses, revision rate, methods of revising wages and bonuses, and circumstances leading to the revision, etc., at private companies, including companies without labour unions.	Revised amount/rate of average wage per worker, method of revision, circumstances of revision, bonus payment status, bonus determination method, etc.	Private companies with 100 or more regular workers belonging to 15 major industries	Annual	November
Councilor, Director-General for Statistics, Information System Management and Industrial Relations Wage and Labour Welfare Statistics Office					

Survey Name	Objectives	Matters	Target	Frequency	Time of Release
<p>Survey on Industrial Accidents (General statistical survey)</p> <p>Councilor, Director-General for Statistics, Information System Management and Industrial Relations Wage and Labour Welfare Statistics Office</p>	Clarify the status of annual occurrence of industrial accidents in the major industries.	Total actual working hours, number of deaths and injured persons and number of closed days by degree of disability due to industrial accidents, etc.	<p>(Survey on establishments) Establishments with 30 or more regular workers belonging to major industries (However, those with 10-29 regular workers for specific industries within manufacturing)</p> <p>(Survey on general construction businesses) Construction sites with the estimated workers' accident compensation insurance premium of 1.6 million yen or more or with the construction contract amount of 180 million yen or more</p>	<p>(Survey on establishments) Annual</p> <p>(Survey on general construction businesses) Annual</p>	<p>(Survey on establishments) - Establishments with 100 or more regular workers June - Establishments with 10 or more regular workers November</p> <p>(Survey on general construction businesses) June</p>
<p>Survey on Industrial Safety and Health (actual condition survey) (General statistical survey)</p> <p>Councilor, Director-General for Statistics, Information System Management and Industrial Relations Wage and Labour Welfare Statistics Office</p>	Identify the actual situation of safety and health management and industrial accident prevention activities conducted by establishments, and anxiety and stress experienced in jobs and work life by workers working at those establishments, etc., to be used as basic information for promoting future industrial safety and health administration.	<p>(Survey on establishments) Mental health measures, industrial health, back injury prevention measures, industrial accident prevention measures, industrial accident prevention measures by industry, heat stroke prevention measures, measures to prevent exposure to chemical substances (Survey on individuals) Work status, anxiety and stress experienced in jobs and work life, long working hours</p>	<p>(Survey on establishments) Private establishments with 10 or more regular workers belonging to 17 major industries (Survey on individuals) Regular workers employed or dispatched workers accepted at the above establishments</p>	<p>Annual (However, excluding the year in which the Survey on Industrial Safety and Health (survey on labour environment) is conducted)</p>	September
<p>Special Survey on Industrial Safety and Health (survey on labour environment) (General statistical survey)</p> <p>Councilor, Director-General for Statistics, Information System Management and Industrial Relations Wage and Labour Welfare Statistics Office</p>	Identify the status of dangerous and hazardous work and the impact of changes in labour environment, etc., on workers, to contribute to the promotion of industrial safety and health measures such as creating a comfortable workplace environment.	<p>(Survey on establishments) Hazardous work, equipment measures, work environment measurement, GHS label display status, and safety data sheet (SDS) issuance status, etc. (Survey on individuals) Status of engagement in hazardous work, chemical substances, etc. (Survey on tunnel construction sites) Dust suppression measures, status of implementation of work environment measurement, etc.</p>	<p>(Survey on establishments) Private establishments with 10 or more regular workers belonging to specific industries (Survey on individuals) Regular workers employed or dispatched workers accepted at the above establishments (Survey on tunnel construction sites) Construction sites in construction industries (limited to tunnel constructions) with the estimated workers' accident compensation insurance premium of 1.6 million yen or more, or with the construction contract amount of 180 million yen or more (190 million yen or more, including tax, for construction sites with insurance relationships established on or before March 31, 2015)</p>	<p>Irregular (The most recent survey was conducted in 2019)</p>	September

Survey Name	Objectives	Matters	Target	Frequency	Time of Release
General Survey on Wage Conditions (Administrative statistics) Central Labour Relations Commission	Reference data for labour dispute settlement	[1] Survey on wage conditions (wage structure, content of various allowances, wage revision status, model scheduled wages, etc.) [2] Survey on retirement allowance, pension, and mandatory retirement system conditions (content of retirement allowance and pension systems, actual situation of payments, model retirement allowances, etc.) [3] Survey on working hours, holidays, and leaves (annual scheduled working hours, annual holidays, premium wage rate for overtime work, paid annual leaves, special leave/absence system, status of work-life balance initiatives, etc.)	Companies selected independently from among companies with capital of 500 million yen or more and 1,000 or more workers	Annual for [1] Every two years for [2] and [3]	Immediately after compilation
Fact-finding Survey on Minimum Wages (General statistical survey) Labour Standards Bureau Wage Division	Identify the actual situation of wages of workers at small- and medium-sized companies or establishments and the status of wage revision, etc., to obtain basic information for deliberations to determine or revise minimum wages at the Central Minimum Wages Council and local minimum wages councils (using questionnaires for basic survey on minimum wages and survey on wage revision status).	For survey on wage revision status: Percentage of establishments by status of implementation of wage revision, average wage revision rate at establishments, characteristic values of the wage increase rate distribution at establishments, wage increase rate for full-time and part-time workers, etc. For basic survey on minimum wages: Industries, employment types, and wage groups, number of workers by establishment size, region, and age group, etc. for each prefecture	For the questionnaire for survey on wage revision status: Establishments with less than 30 regular workers in manufacturing, wholesale, retail, accommodations, eating and drinking services, medical, welfare, scientific research, professional and technical services, living-related and personal services, amusement, and services (not classified elsewhere) industries For the basic survey on minimum wages: Establishments with less than 100 regular workers in manufacturing industries and in the newspaper and publishing sectors of information and communications industries, and establishments with less than 30 regular workers in wholesale, retail, accommodations, eating and drinking services, medical, welfare, scientific research, professional and technical services, living-related and personal services, amusement, and services (not classified elsewhere) industries (however, for industries with specified minimum wages, 30 or more regular employees, or 100 or more regular employees, may also be subject to the survey if necessary for deliberations on the specified minimum wages)	Annual	In addition to releasing the results in part in July or later as reference data for minimum wages councils, the results of the survey on wage revision status are released immediately after deliberations and the results of the basic survey on minimum wages are released by early June of the following year

Survey Name	Objectives	Matters	Target	Frequency	Time of Release
<p>Survey on Potential Recruits Among Graduating Students at Universities, Junior Colleges, Technical Colleges, and Vocational Schools (General statistical survey)</p> <p>Director-General for Human Resources Development Office of Counsellor for Youth Support and Career Development</p>	<p>Identify the status of informal job offers received among students scheduled to graduate universities, junior colleges, technical colleges, and vocational schools (post-secondary courses) every March to obtain reference data for appropriately addressing employment issues.</p>	<p>- Number of subjects in the survey population at surveyed schools - Number of subjects in this survey at surveyed schools (number of samples) - Career aspirations of survey subjects - Major field study of job-seeking students at their current school - Period during which survey subjects received informal job offers from companies, etc.</p>	<p>6,250 students sampled using a specific method from among graduating students at universities (62 universities, among which 21 national universities, 3 public universities, 38 private universities), junior colleges (20), technical colleges (10), and vocational schools (20) nationwide by the Ministry of Education, Culture, Sports, Science and Technology and the Ministry of Health, Labour and Welfare with consideration given to school's establishing body and region</p>	<p>Four times a year October, December, February, April</p>	<p>- October survey: Mid-November - December survey: Mid-January - February survey: Mid-March - April survey: Mid-May</p>
<p>Survey on Labour Cost Rate (General statistical survey)</p> <p>Labour Standards Bureau Workers' Compensation Administration Division</p>	<p>Identify the actual situation of wages in contracted construction businesses to be used as basic information for revising the labour cost rate used to calculate workers' accident compensation insurance premiums.</p>	<p>Construction contract amount, insurance premium calculation method, amount of wages paid, etc.</p>	<p>Construction businesses</p>	<p>Every three years, in principle</p>	<p>Released as reference data for Subcommittee on Industrial Accident Compensation Insurance, Working Conditions Committee, Labour Policy Council</p>
<p>Survey on the Employment Situation of Persons with Disabilities (General statistical survey)</p> <p>Employment Security Bureau Employment Measures for Persons with Disabilities Division</p>	<p>Examine the number of persons with physical, intellectual, and mental disabilities employed and employment management measures, etc., at private establishments in major industries, to contribute to the consideration and planning of future employment measures for persons with disabilities.</p>	<p>Types and degrees of disabilities, wages, working hours, years of service, employment status, etc. of workers with disabilities employed</p>	<p>Private establishments with 5 or more regular workers belonging to 18 major industries</p>	<p>Every five years The most recent survey was conducted in 2018</p>	<p>March</p>