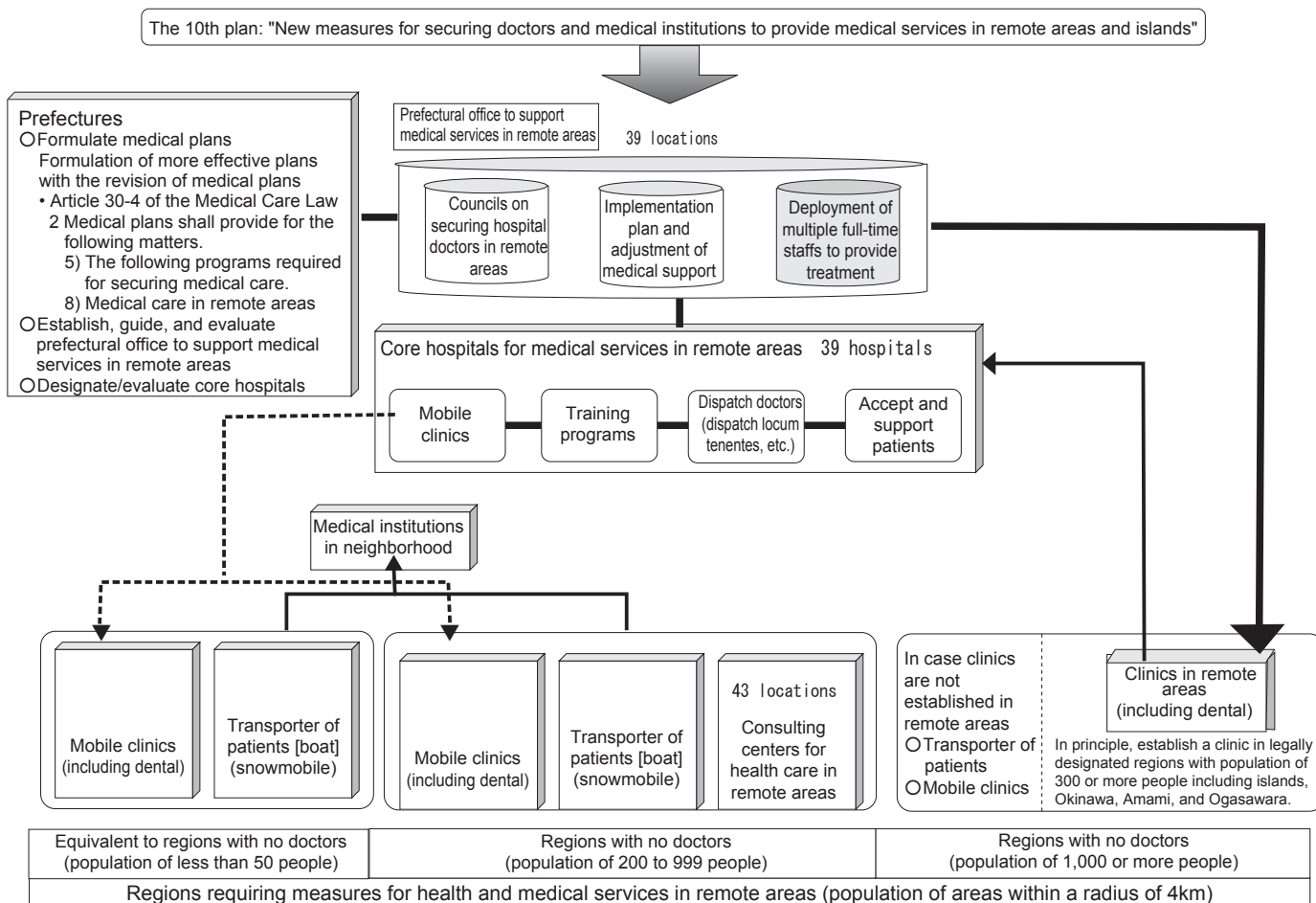


Overview

Structural Chart of the 10th Measures for Health and Medical Services in Remote Areas (since FY 2006~2010)



Current Status of Measures for Health and Medical Services in Remote Areas

1. Efforts in plans for health and medical services in remote areas

As does the 9th plan, the new 10th plan for health and medical services in remote areas started in FY 2006 provides that "prefectural office to support medical services in remote areas" are established in each prefecture to continue promoting broad-based measures for health and medical services in remote areas.

Years of investigation (once every 5 years)	Regions with no doctors	Subject population (10,000 people)
1966	2,920	119
1973	2,088	77
1984	1,276	32
1999	914	20
2004	786	16.5

* Regions with no doctors

Regions with no medical institutions in which population of 50 or more people live within a radius of approximately 4km from the major location of the region and it takes more than one hour one way to go to medical institutions using ordinary means of transportation.

2. Status of Establishment

(1) Prefectural office to support medical services in remote areas (subject to assistance of operational expenses)

Scheduled to be established/operated in 39 prefectures as of December 31, 2009.

(2) Core hospitals for medical services in remote areas (subject to assistance of operational expenses, facility establishment expenses, and equipment installment expenses)

263 hospitals are designated as of July 31, 2009.

(3) Clinics for medical services in remote areas (subject to assistance of operational expenses, facility establishment expenses, and equipment installment expenses)

1,063 clinics (including National Health Insurance direct managed clinics) are established as of March 31, 2008.