

106

A

別 冊







No. 1

(A 問題 16)



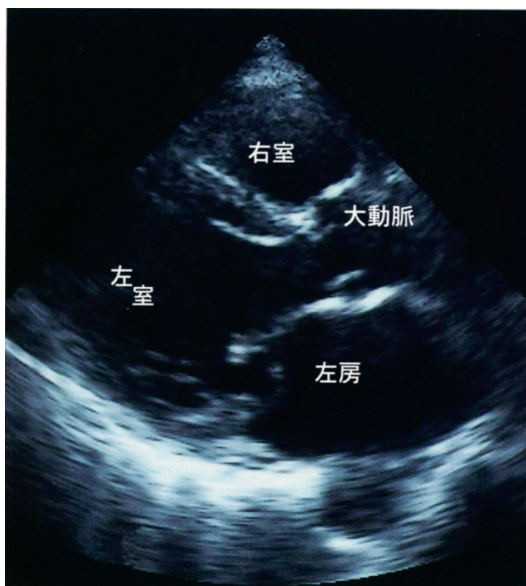
No. 2

(A 問題 22)



No. 3 A

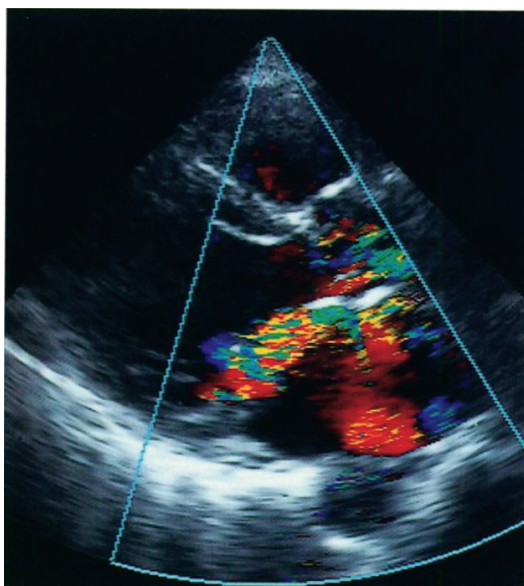
(A 問題 24)



収縮期

No. 3 B

(A 問題 24)



収縮期

No. 4 A

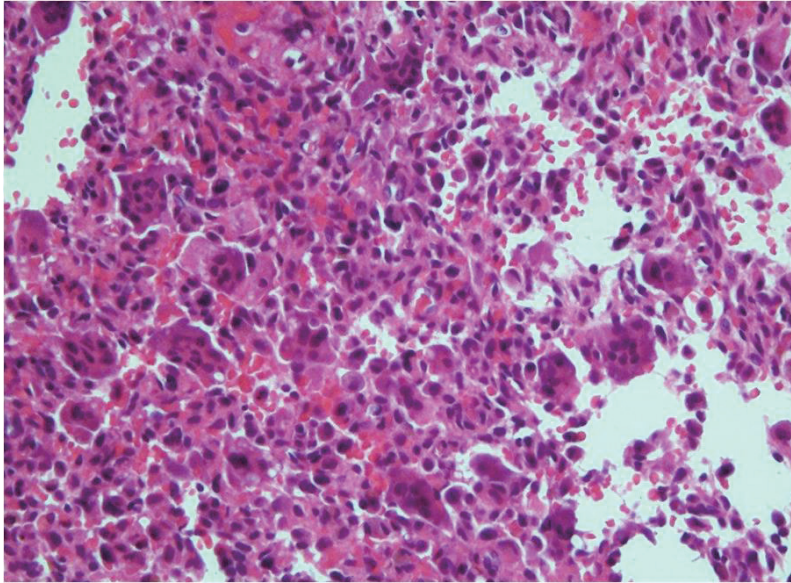
(A 問題 26)





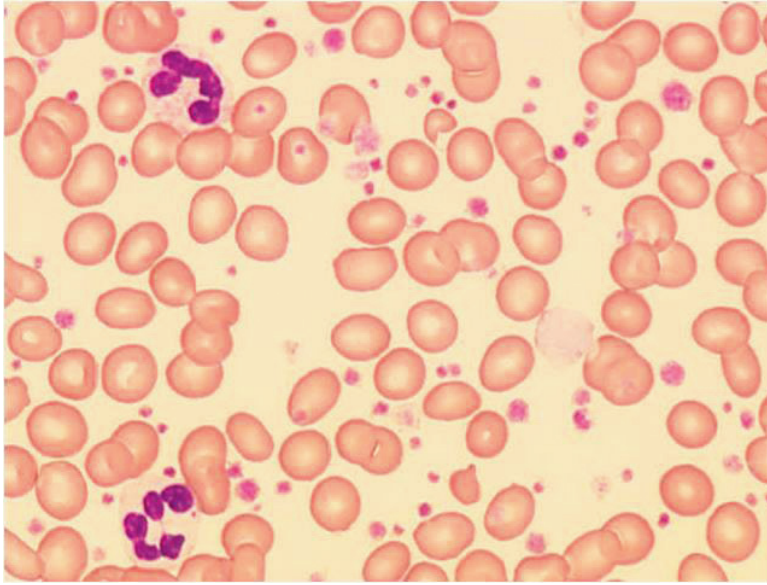
No. 4 B

(A 問題 26)



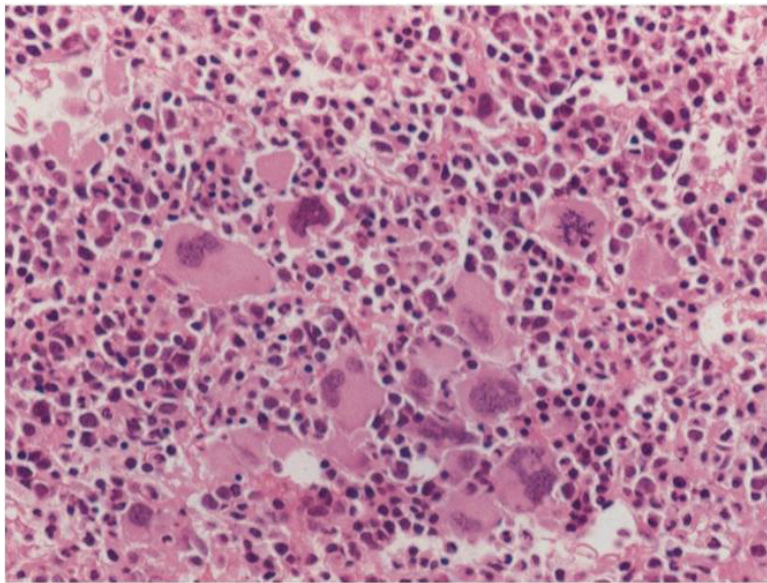
No. 5 A

(A 問題 27)



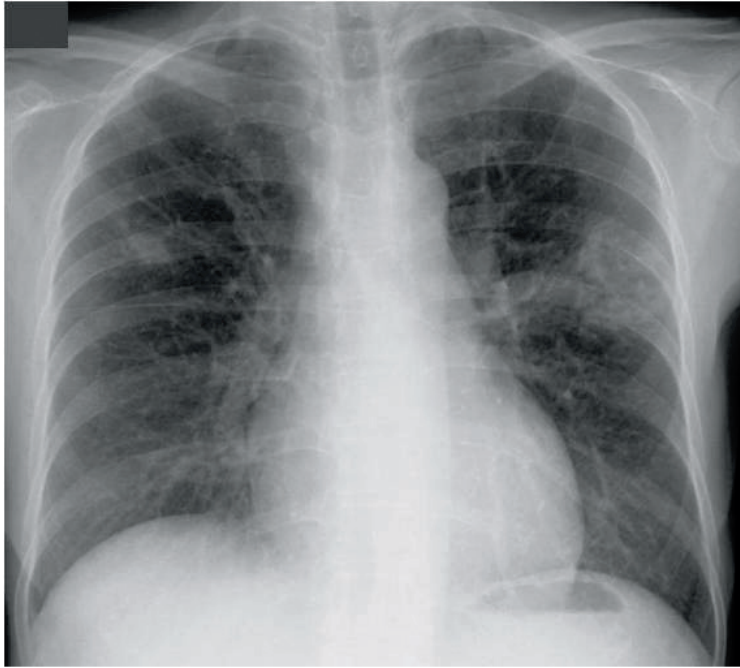
No. 5 B

(A 問題 27)



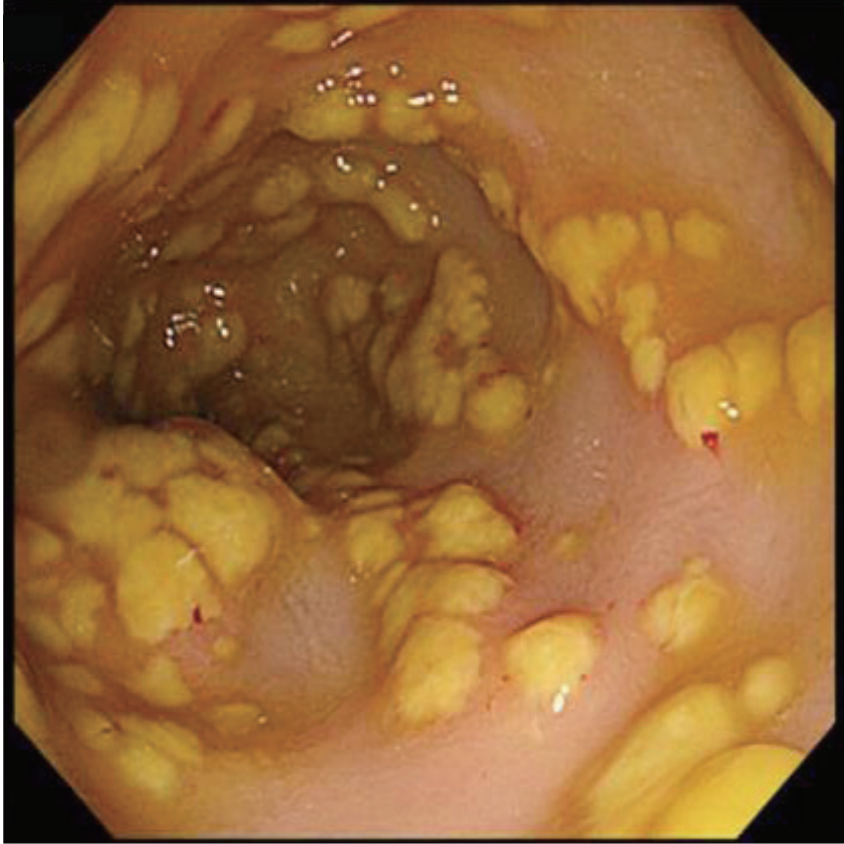
No. 6

(A 問題 28)



No. 7

(A 問題 29)



余 白

No. 8 A

(A 問題 30)



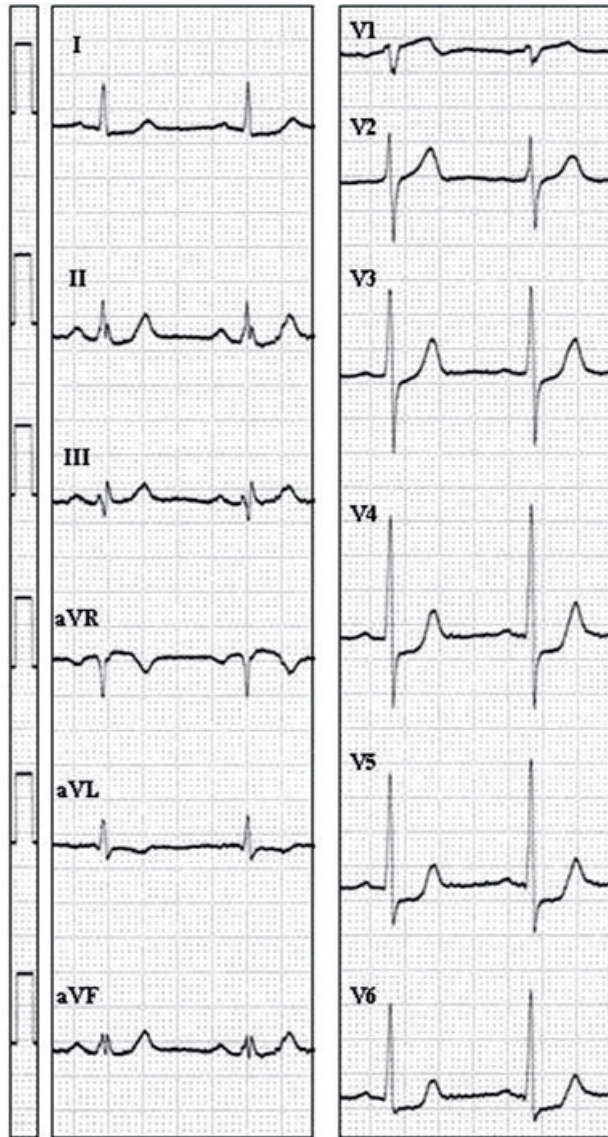
立位

No. 8 B

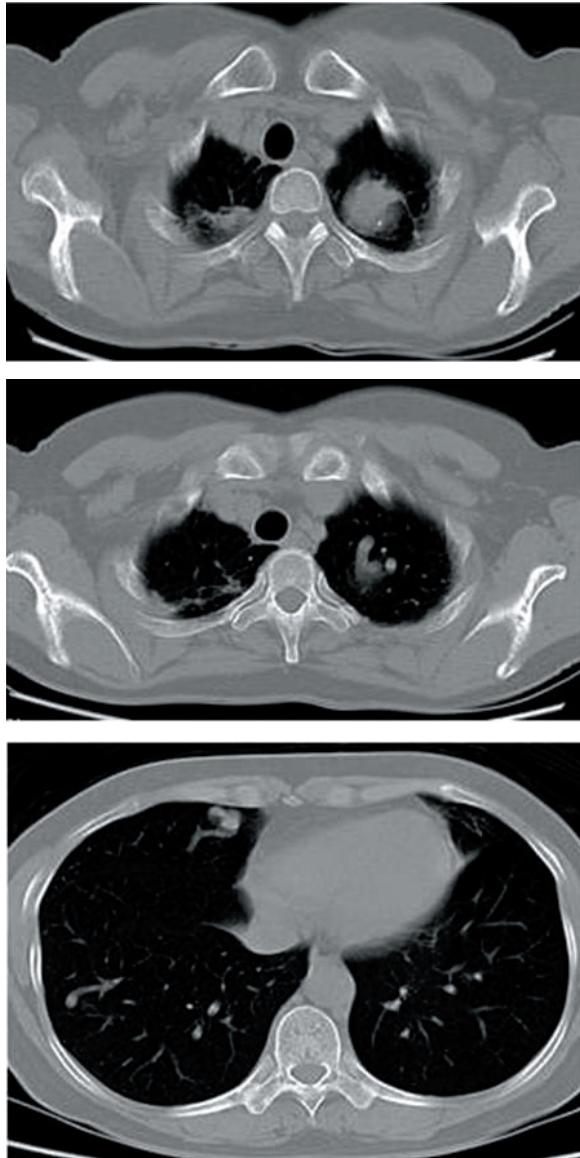
(A 問題 30)



臥位





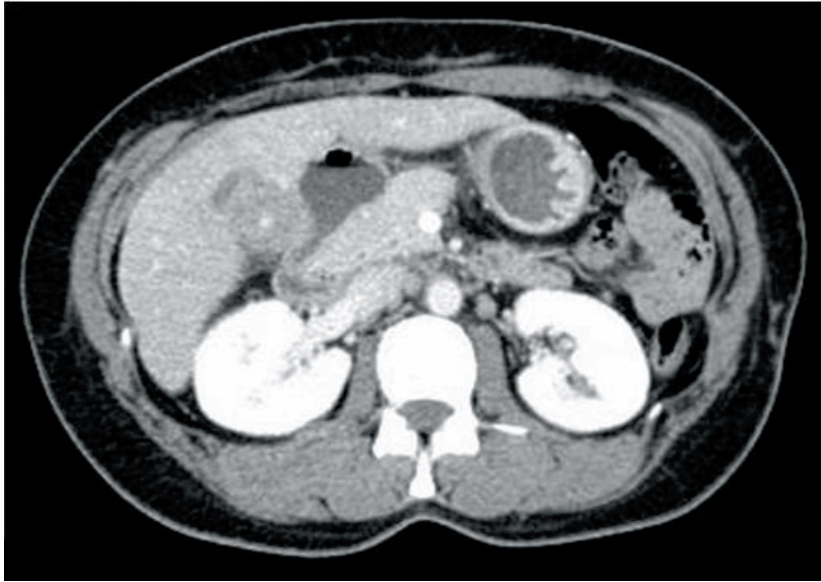


No. 11

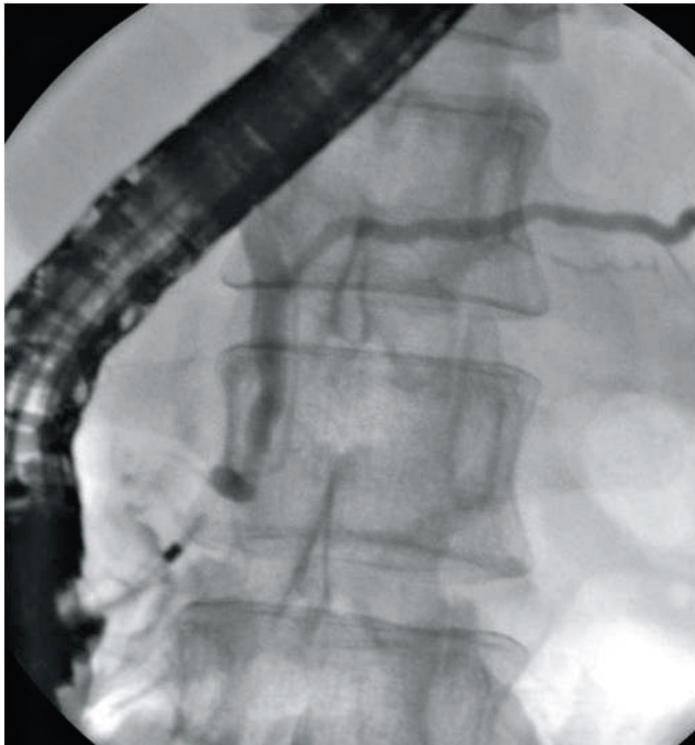
(A 問題 33)

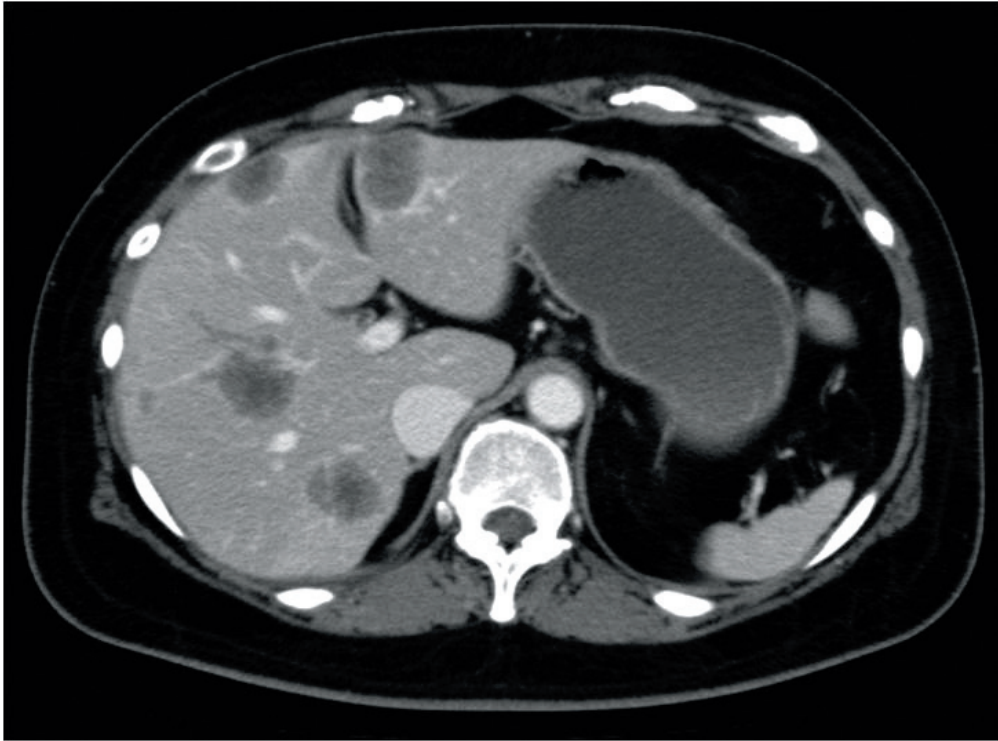


No. 12 A (A 問題 34)



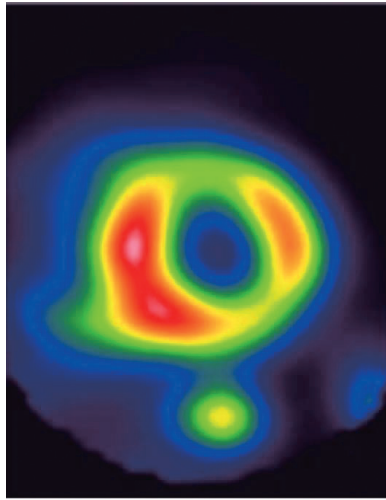
No. 12 B (A 問題 34)





No. 14 A

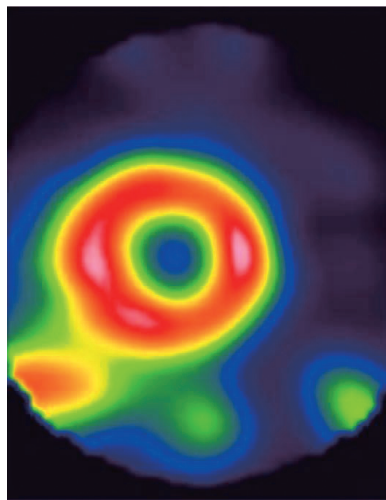
(A 問題 37)



初期像(アデノシン負荷時)

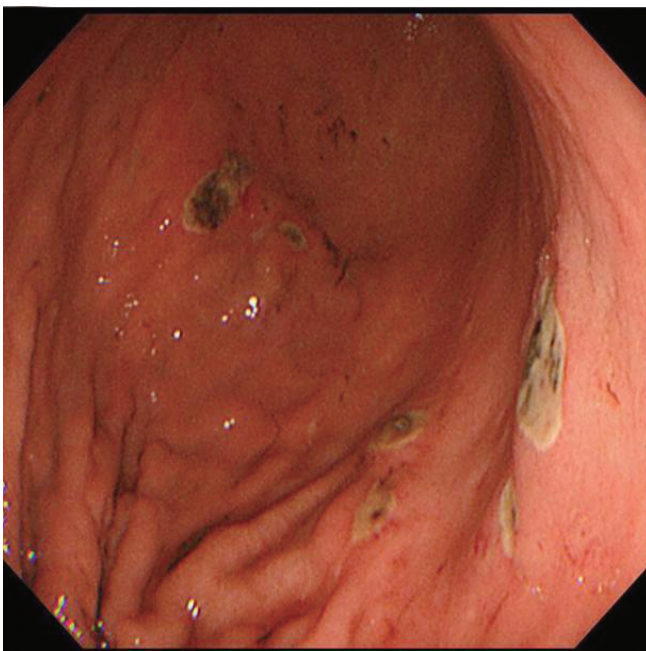
No. 14 B

(A 問題 37)

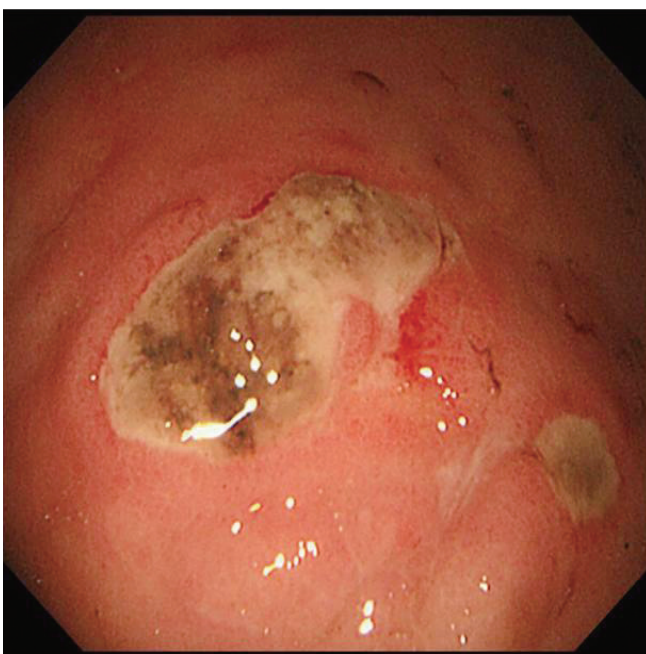


遅延像

No. 15 A (A 問題 41)

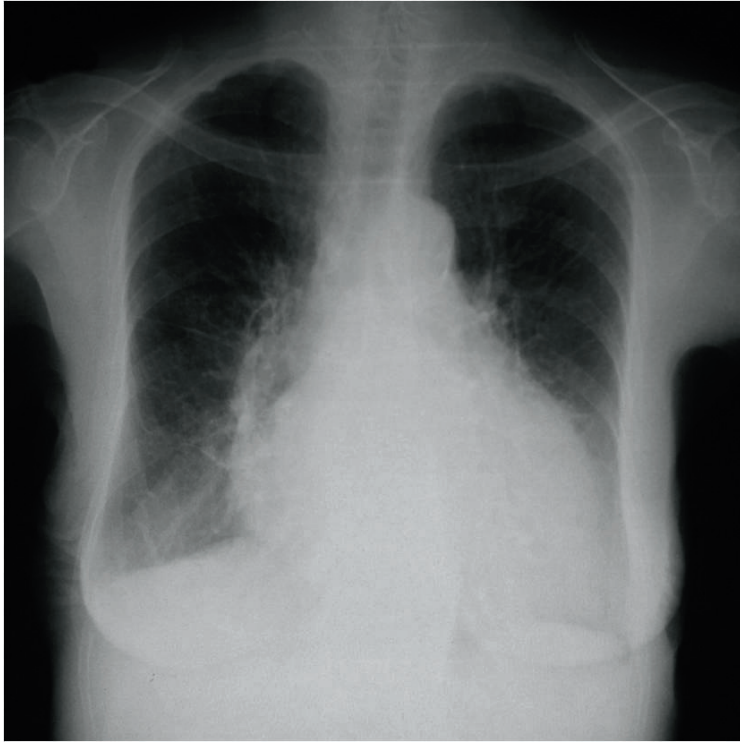


No. 15 B (A 問題 41)



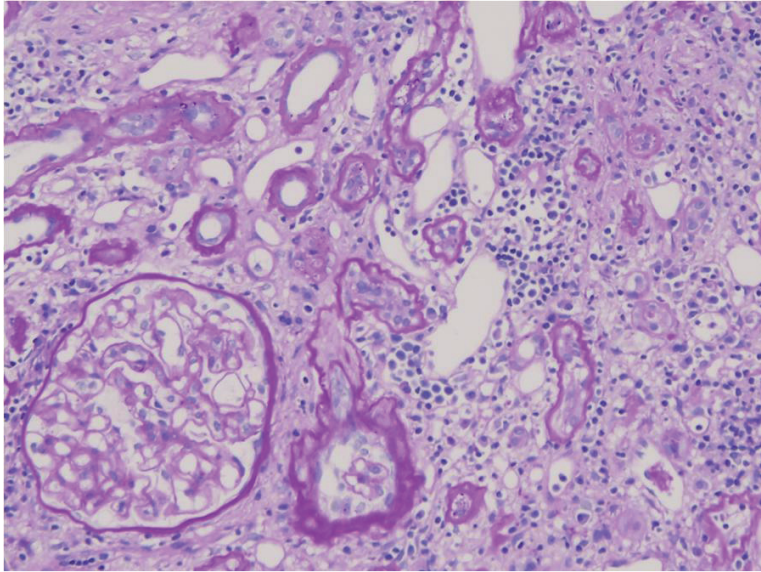
No. 16

(A 問題 42)



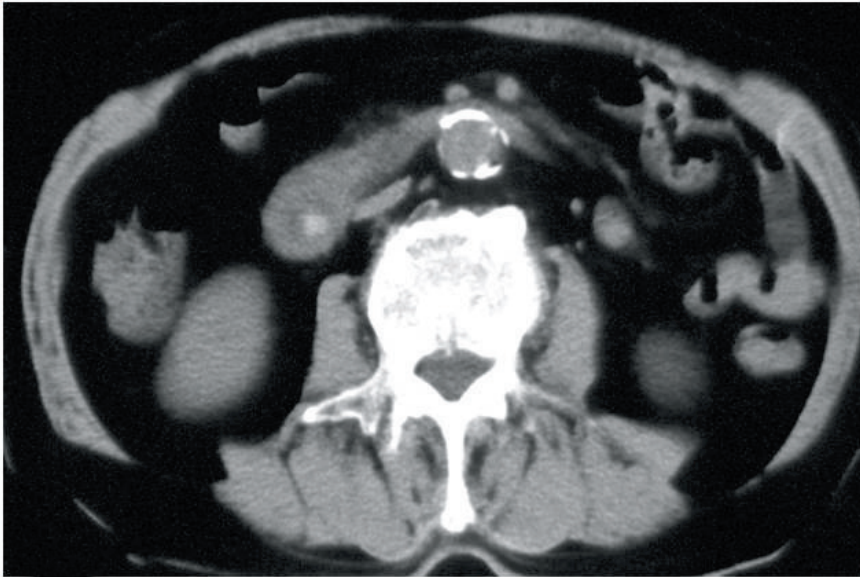
No. 17

(A 問題 43)

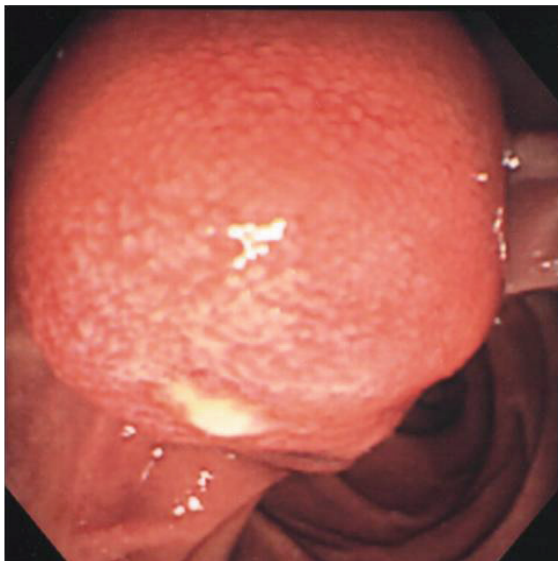




No. 18 A (A 問題 44)



No. 18 B (A 問題 44)



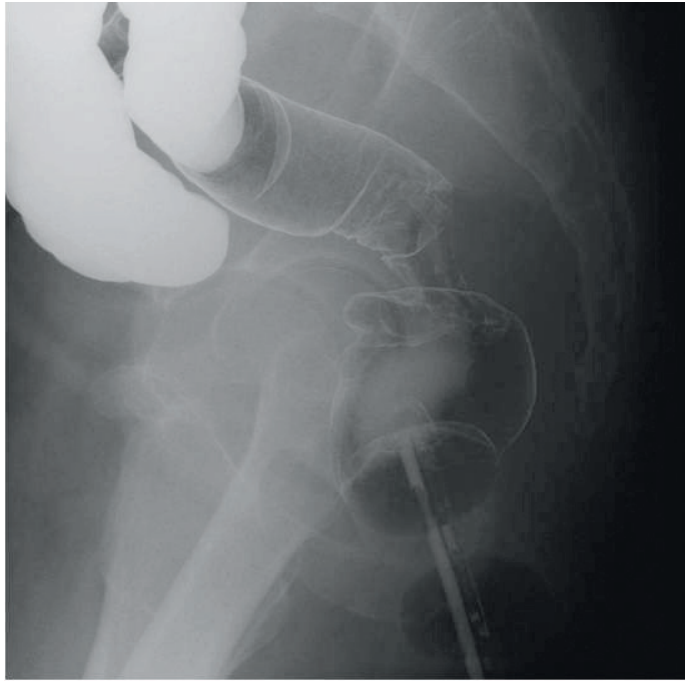
No. 19

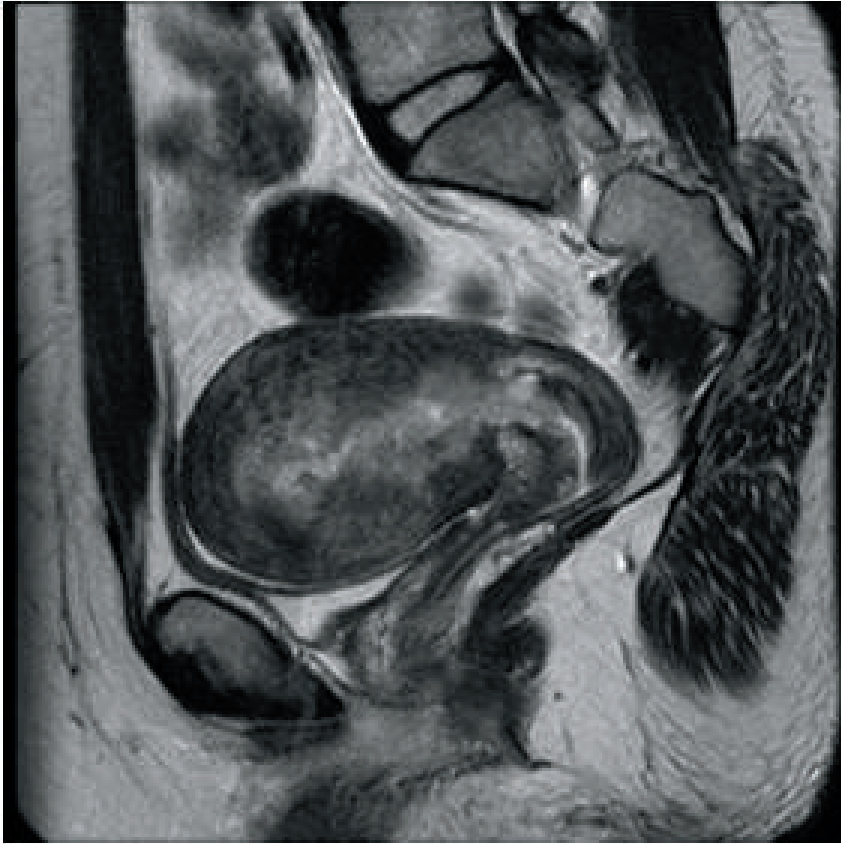
(A 問題 45)



No. 20

(A 問題 46)





No. 22 A (A 問題 48)



No. 22 B (A 問題 48)



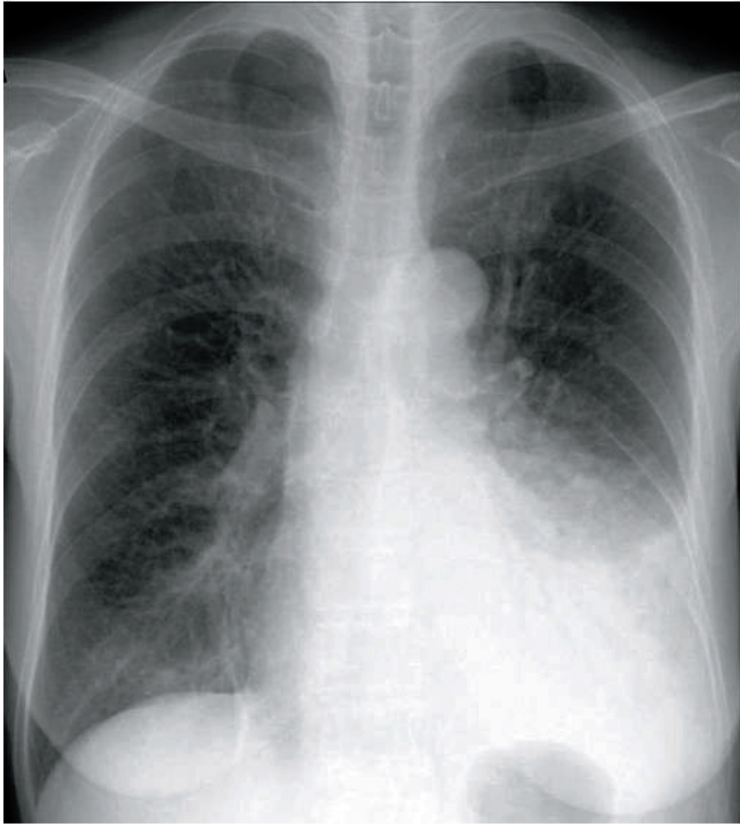
No. 23

(A 問題 49)



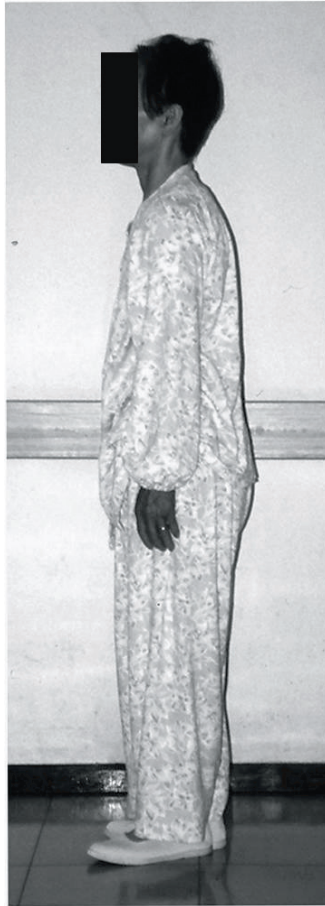
No. 24

(A 問題 51)



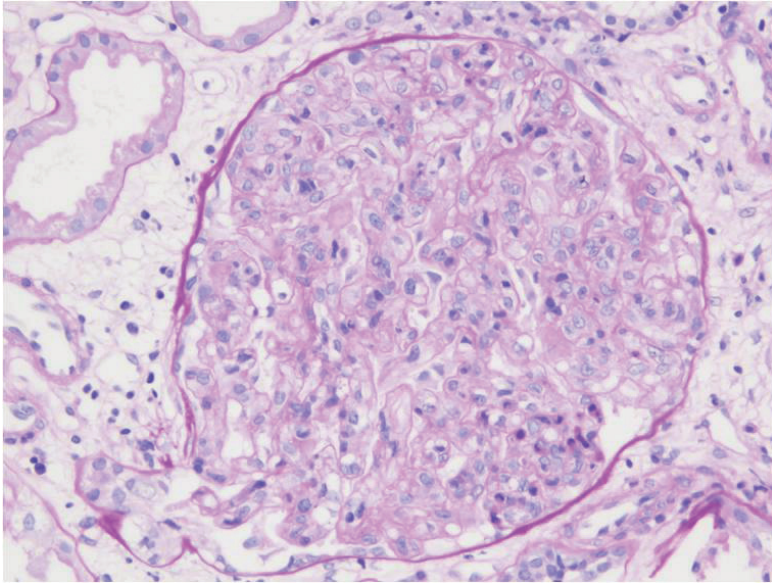
No. 25

(A 問題 52)

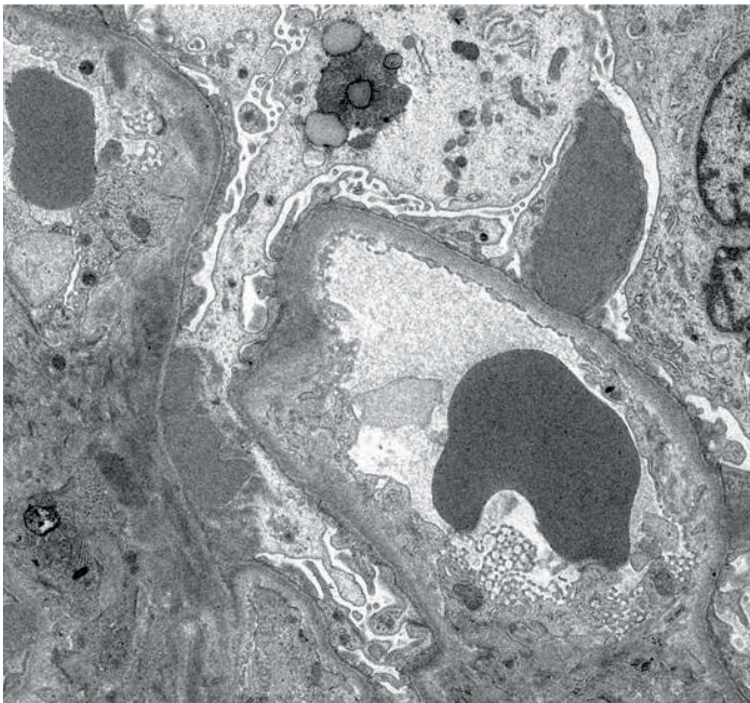




No. 26 A (A 問題 53)



No. 26 B (A 問題 53)

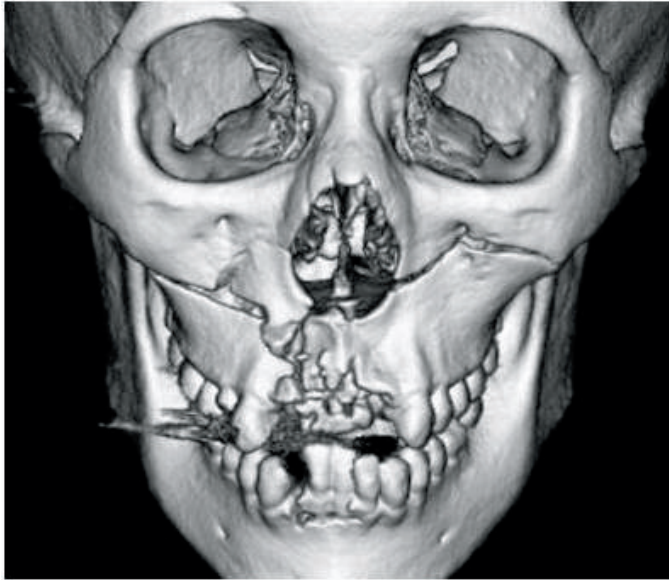


No. 27

(A 問題 55)



No. 28 A (A 問題 57)



No. 28 B (A 問題 57)



No. 29

(A 問題 58)

