

1. 平成 22 年・平成 23 年ともに集計対象となった調査対象における施設全体収益の状況

入院外来計、および入院計で見ると、医業費用の伸びが、医業収益の伸びを若干上回っており、収支差額率は、入院計では 7.9%から 3.4%、入院外来計では-2.5%から-4.1%へと悪化している。

外来計については、医業収益は微増、医業費用は微減となっており、収支差額率は-28.8%から-23.0%に改善している。

| 平成22年度 | 入院計 | | 外来計 | | 入院外来計 | |
|---------|-------------|---------|-------------|---------|-------------|---------|
| | 金額(円) | 構成比 (%) | 金額(円) | 構成比 (%) | 金額(円) | 構成比 (%) |
| 医業収益 | 498,772,804 | 100.0% | 197,484,865 | 100.0% | 696,257,669 | 100.0% |
| 医業費用 | 459,409,277 | 92.1% | 254,359,947 | 128.8% | 713,769,224 | 102.5% |
| 材料費 | 123,285,961 | 24.7% | 69,818,684 | 35.4% | 193,104,645 | 27.7% |
| 給与費 | 243,169,752 | 48.8% | 118,669,487 | 60.1% | 361,839,239 | 52.0% |
| 委託費 | 21,870,418 | 4.4% | 25,108,123 | 12.7% | 46,978,541 | 6.7% |
| 設備関係費 | 42,996,525 | 8.6% | 26,320,483 | 13.3% | 69,317,008 | 10.0% |
| その他医業費用 | 28,086,621 | 5.6% | 14,443,170 | 7.3% | 42,529,791 | 6.1% |
| 収支差額 | 39,363,527 | 7.9% | -56,875,082 | -28.8% | -17,511,555 | -2.5% |
| 医業外収益 | 33,085,626 | 6.6% | 6,752,707 | 3.4% | 39,838,333 | 5.7% |
| 医業外費用 | 11,374,249 | 2.3% | 1,747,743 | 0.9% | 13,121,992 | 1.9% |
| 総収支差額 | 61,074,904 | 12.2% | -51,870,117 | -26.3% | 9,204,787 | 1.3% |

| 平成23年度 | 入院計 | | 外来計 | | 入院外来計 | |
|---------|-------------|---------|-------------|---------|-------------|---------|
| | 金額(円) | 構成比 (%) | 金額(円) | 構成比 (%) | 金額(円) | 構成比 (%) |
| 医業収益 | 508,973,774 | 100.0% | 202,038,832 | 100.0% | 711,012,606 | 100.0% |
| 医業費用 | 491,919,712 | 96.6% | 248,562,966 | 123.0% | 740,482,678 | 104.1% |
| 材料費 | 126,726,622 | 24.9% | 69,871,969 | 34.6% | 196,598,591 | 27.7% |
| 給与費 | 262,497,744 | 51.6% | 119,694,563 | 59.2% | 382,192,307 | 53.8% |
| 委託費 | 24,484,333 | 4.8% | 24,058,557 | 11.9% | 48,542,890 | 6.8% |
| 設備関係費 | 47,597,331 | 9.4% | 21,103,583 | 10.4% | 68,700,915 | 9.7% |
| その他医業費用 | 30,613,682 | 6.0% | 13,834,293 | 6.8% | 44,447,975 | 6.3% |
| 収支差額 | 17,054,062 | 3.4% | -46,524,133 | -23.0% | -29,470,072 | -4.1% |
| 医業外収益 | 27,185,420 | 5.3% | 5,202,721 | 2.6% | 32,388,141 | 4.6% |
| 医業外費用 | 12,080,821 | 2.4% | 2,197,453 | 1.1% | 14,278,274 | 2.0% |
| 総収支差額 | 32,158,661 | 6.3% | -43,518,866 | -21.5% | -11,360,205 | -1.6% |

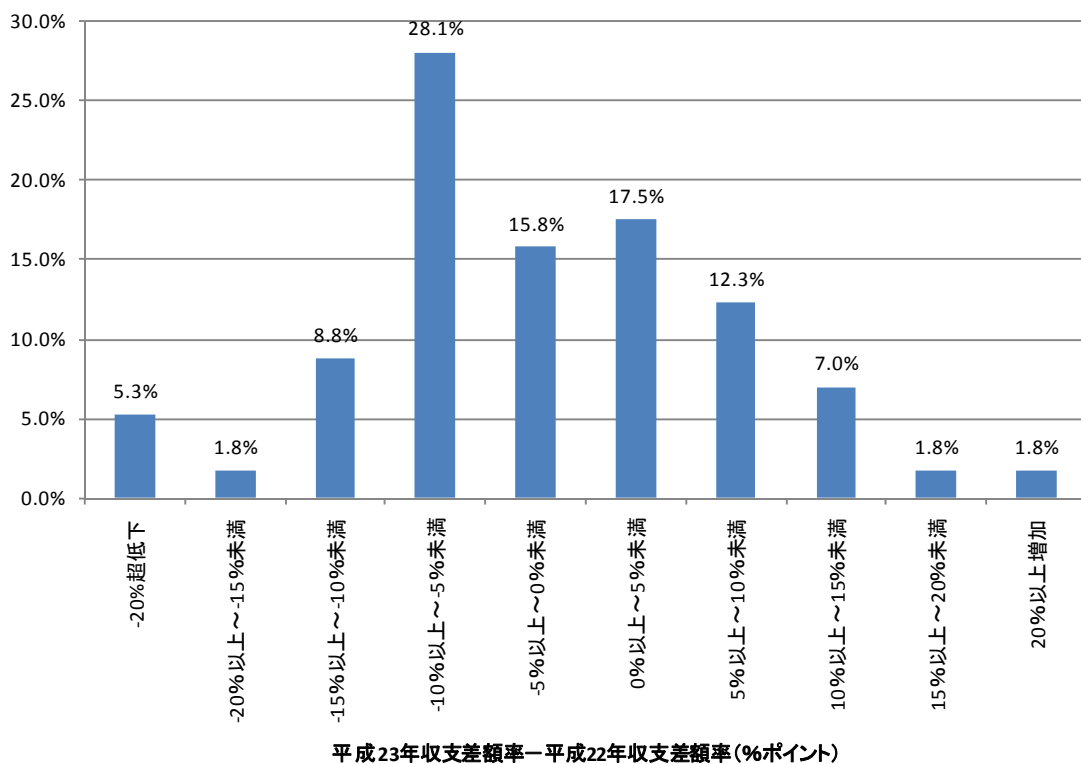
※ 数字は平成 22 年度調査、平成 23 年度調査ともに集計対象となった 5 7 病院における 1 病院あたりの平均値

2. 収支差額率（収支差額÷医業収益）の変化の状況

57 病院の合計で見ると、入院外来合計の収支差額率は-2.5%（平成 22 年調査）から、-4.1%（平成 23 年調査）へと 1.6%ポイントの減少となっている。

57 病院それぞれにおける収支差額率の変化（平成 23 年収支差額率－平成 22 年収支差額率）をみると、-10%以上～-5%未満の変化となっているものが 28.1%と最も多くなっている。また、全体の 66.7%が 5%以上の増加または減少となっており、施設個別で見ると、10月 1 ヶ月の収支差額率変動は大きなものとなっている。

収支差額率（入院外来合計）の変化の状況



3. 平成22年・平成23年ともに集計対象となった病院の集計結果（主要なレセプト診療科+麻酔科）

(1) 入院

①平成22年度調査

| 平成22年度 | 01内科 | | 08循環器科 | | 09小児科 | | 10外科 | | 11整形外科 | | 14脳神経外科 | | 19皮膚科 | | 20泌尿器科 | | 23産婦人科 | | 26眼科 | | 27耳鼻いんこう科 | | 30放射線科 | | 31麻酔科 | |
|---------|-------------|--------|------------|--------|------------|--------|------------|--------|------------|--------|------------|--------|-----------|--------|------------|--------|------------|--------|------------|--------|------------|--------|-----------|--------|-----------|--------|
| | 金額(円) | 構成比(%) | 金額(円) | 構成比(%) | 金額(円) | 構成比(%) | 金額(円) | 構成比(%) | 金額(円) | 構成比(%) | 金額(円) | 構成比(%) | 金額(円) | 構成比(%) | 金額(円) | 構成比(%) | 金額(円) | 構成比(%) | 金額(円) | 構成比(%) | 金額(円) | 構成比(%) | 金額(円) | 構成比(%) | 金額(円) | 構成比(%) |
| 医業収益 | 93,422,405 | 100% | 86,186,511 | 100% | 28,916,955 | 100% | 70,824,974 | 100% | 75,431,881 | 100% | 47,525,238 | 100% | 3,330,068 | 100% | 23,055,670 | 100% | 30,346,459 | 100% | 17,041,085 | 100% | 15,585,007 | 100% | 5,593,898 | 100% | 4,054,785 | 100% |
| 医業費用 | 108,954,820 | 117% | 78,979,879 | 92% | 25,296,126 | 87% | 58,379,146 | 82% | 60,365,265 | 80% | 40,397,340 | 85% | 4,237,177 | 127% | 20,598,713 | 89% | 30,105,601 | 99% | 8,952,652 | 53% | 12,903,916 | 83% | 4,070,130 | 73% | 4,211,177 | 104% |
| 材料費 | 29,244,962 | 31% | 38,000,638 | 44% | 3,486,553 | 12% | 13,658,511 | 19% | 17,454,448 | 23% | 9,202,347 | 19% | 598,612 | 18% | 4,536,081 | 20% | 4,285,123 | 14% | 1,870,778 | 11% | 2,063,248 | 13% | 1,328,868 | 24% | 1,261,519 | 31% |
| 給与費 | 56,675,006 | 61% | 30,540,973 | 35% | 15,533,372 | 54% | 32,574,624 | 46% | 31,471,779 | 42% | 23,000,195 | 48% | 2,631,304 | 79% | 11,518,816 | 50% | 18,708,496 | 62% | 5,187,820 | 30% | 7,812,685 | 50% | 2,001,914 | 36% | 2,177,774 | 54% |
| 委託費 | 5,592,300 | 6% | 2,502,742 | 3% | 1,208,931 | 4% | 2,751,675 | 4% | 2,742,848 | 4% | 1,801,581 | 4% | 237,552 | 7% | 1,045,035 | 5% | 1,677,157 | 6% | 451,049 | 3% | 686,378 | 4% | 140,950 | 3% | 174,451 | 4% |
| 設備関係費 | 10,846,712 | 12% | 4,412,547 | 5% | 3,212,051 | 11% | 5,530,258 | 8% | 5,241,353 | 7% | 3,834,202 | 8% | 484,972 | 15% | 2,042,876 | 9% | 3,153,331 | 10% | 843,359 | 5% | 1,529,640 | 10% | 371,035 | 7% | 393,334 | 10% |
| その他医業費用 | 6,595,841 | 7% | 3,522,979 | 4% | 1,855,219 | 6% | 3,864,078 | 5% | 3,454,839 | 5% | 2,559,015 | 5% | 284,737 | 9% | 1,455,905 | 6% | 2,281,494 | 8% | 599,645 | 4% | 811,965 | 5% | 227,362 | 4% | 204,100 | 5% |
| 収支差額 | -15,532,415 | -17% | 7,206,632 | 8% | 3,620,829 | 13% | 12,445,829 | 18% | 15,066,615 | 20% | 7,127,898 | 15% | -907,109 | -27% | 2,456,958 | 11% | 240,857 | 1% | 8,088,433 | 47% | 2,681,091 | 17% | 1,523,768 | 27% | -156,392 | -4% |
| 医業外収益 | 6,823,993 | 7% | 4,087,391 | 5% | 2,683,847 | 9% | 4,325,853 | 6% | 4,094,107 | 5% | 3,538,200 | 7% | 488,641 | 15% | 1,464,719 | 6% | 2,981,757 | 10% | 678,615 | 4% | 1,343,466 | 9% | 198,164 | 4% | 350,080 | 9% |
| 医業外費用 | 2,474,566 | 3% | 1,352,561 | 2% | 1,041,300 | 4% | 1,457,924 | 2% | 1,241,233 | 2% | 1,025,754 | 2% | 164,050 | 5% | 468,207 | 2% | 1,051,689 | 3% | 248,984 | 1% | 391,071 | 3% | 110,684 | 2% | 124,826 | 3% |
| 総収支差額 | -11,182,987 | -12% | 9,941,461 | 12% | 5,263,377 | 18% | 15,313,757 | 22% | 17,919,490 | 24% | 9,640,343 | 20% | -582,519 | -17% | 3,453,470 | 15% | 2,170,925 | 7% | 8,518,064 | 50% | 3,633,486 | 23% | 1,611,249 | 29% | 68,862 | 2% |
| 病院数 | 55 | | 34 | | 38 | | 53 | | 54 | | 39 | | 36 | | 47 | | 33 | | 42 | | 33 | | 19 | | 18 | |

②平成23年度調査

| 平成23年度 | 01内科 | | 08循環器科 | | 09小児科 | | 10外科 | | 11整形外科 | | 14脳神経外科 | | 19皮膚科 | | 20泌尿器科 | | 23産婦人科 | | 26眼科 | | 27耳鼻いんこう科 | | 30放射線科 | | 31麻酔科 | |
|---------|-------------|--------|------------|--------|------------|--------|------------|--------|------------|--------|------------|--------|-----------|--------|------------|--------|------------|--------|------------|--------|------------|--------|------------|--------|-----------|--------|
| | 金額(円) | 構成比(%) | 金額(円) | 構成比(%) | 金額(円) | 構成比(%) | 金額(円) | 構成比(%) | 金額(円) | 構成比(%) | 金額(円) | 構成比(%) | 金額(円) | 構成比(%) | 金額(円) | 構成比(%) | 金額(円) | 構成比(%) | 金額(円) | 構成比(%) | 金額(円) | 構成比(%) | 金額(円) | 構成比(%) | 金額(円) | 構成比(%) |
| 医業収益 | 126,968,355 | 100% | 81,017,046 | 100% | 32,683,485 | 100% | 64,007,589 | 100% | 60,453,128 | 100% | 50,014,646 | 100% | 4,972,419 | 100% | 26,317,369 | 100% | 32,447,909 | 100% | 12,345,220 | 100% | 15,172,470 | 100% | 10,003,473 | 100% | 4,619,712 | 100% |
| 医業費用 | 122,771,275 | 96% | 84,760,469 | 104% | 28,548,264 | 85% | 56,701,364 | 88% | 62,961,143 | 104% | 44,793,092 | 88% | 5,306,887 | 106% | 23,801,960 | 89% | 39,765,796 | 121% | 9,030,951 | 73% | 12,895,356 | 85% | 7,393,760 | 74% | 5,593,905 | 121% |
| 材料費 | 32,888,476 | 26% | 40,475,305 | 51% | 3,233,966 | 9% | 11,848,913 | 19% | 16,507,839 | 28% | 10,512,154 | 21% | 1,056,539 | 21% | 4,647,808 | 17% | 6,057,779 | 19% | 1,327,752 | 11% | 2,008,383 | 13% | 1,644,017 | 16% | 1,674,484 | 36% |
| 給与費 | 63,287,848 | 49% | 32,516,333 | 38% | 18,496,877 | 55% | 32,225,005 | 49% | 33,932,908 | 55% | 25,038,306 | 48% | 2,989,598 | 59% | 13,822,880 | 51% | 24,603,906 | 73% | 5,890,413 | 47% | 7,476,943 | 49% | 4,827,024 | 48% | 3,026,769 | 66% |
| 委託費 | 6,556,272 | 5% | 2,868,093 | 4% | 1,654,673 | 5% | 2,911,743 | 5% | 2,971,276 | 5% | 1,984,012 | 4% | 273,357 | 6% | 1,279,330 | 5% | 2,232,678 | 7% | 385,635 | 3% | 783,516 | 5% | 167,120 | 2% | 244,503 | 5% |
| 設備関係費 | 12,582,770 | 10% | 5,118,298 | 6% | 3,299,198 | 10% | 5,808,142 | 9% | 5,721,701 | 10% | 4,153,444 | 8% | 624,300 | 13% | 2,460,937 | 10% | 3,904,794 | 13% | 836,769 | 7% | 1,762,098 | 12% | 481,443 | 5% | 404,579 | 9% |
| その他医業費用 | 7,455,909 | 6% | 3,782,440 | 5% | 1,863,550 | 6% | 3,907,562 | 6% | 3,827,419 | 6% | 3,105,176 | 6% | 363,093 | 7% | 1,591,005 | 6% | 2,966,639 | 9% | 590,382 | 5% | 864,418 | 6% | 274,157 | 3% | 243,571 | 5% |
| 収支差額 | 4,197,080 | 4% | -3,743,423 | -4% | 4,135,221 | 15% | 7,306,225 | 12% | -2,508,014 | -4% | 5,221,554 | 12% | -334,468 | -6% | 2,515,409 | 11% | -7,317,887 | -21% | 3,314,269 | 27% | 2,277,113 | 15% | 2,609,713 | 26% | -974,194 | -21% |
| 医業外収益 | 5,545,375 | 4% | 3,826,953 | 5% | 2,650,548 | 8% | 3,473,984 | 6% | 2,589,900 | 4% | 2,744,078 | 6% | 351,139 | 7% | 1,375,261 | 5% | 2,774,755 | 9% | 480,222 | 4% | 1,401,923 | 9% | 259,097 | 3% | 298,207 | 6% |
| 医業外費用 | 3,100,346 | 2% | 1,204,622 | 1% | 1,297,609 | 4% | 1,500,682 | 2% | 1,242,351 | 2% | 1,094,200 | 2% | 151,638 | 3% | 645,440 | 2% | 1,404,071 | 4% | 224,398 | 2% | 453,870 | 3% | 106,082 | 1% | 159,976 | 3% |
| 総収支差額 | 6,642,110 | 6% | -1,121,092 | -1% | 5,488,160 | 19% | 9,279,527 | 16% | -1,160,466 | -1% | 6,871,432 | 16% | -134,967 | -2% | 3,245,231 | 14% | -5,947,203 | -15% | 3,570,092 | 30% | 3,225,166 | 21% | 2,762,728 | 28% | -835,963 | -18% |
| 病院数 | 55 | | 34 | | 37 | | 53 | | 53 | | 38 | | 33 | | 44 | | 33 | | 40 | | 32 | | 18 | | 17 | |

注) 平成22年度調査の数値は、保険外収益について各病院が選択した振り分けの基準に基づくものであり、補正を行っていない。(以下同様)

(2) 外来

①平成22年度調査

| 平成22年度 | 01内科 | | 08循環器科 | | 09小児科 | | 10外科 | | 11整形外科 | | 14脳神経外科 | | 19皮膚科 | | 20泌尿器科 | | 23産婦人科 | | 26眼科 | | 27耳鼻いんこう科 | | 30放射線科 | | 31麻酔科 | | | | | |
|---------|-------------|--------|------------|--------|------------|--------|------------|--------|------------|--------|------------|--------|------------|--------|------------|--------|------------|--------|------------|--------|------------|--------|------------|--------|------------|--------|-------|--------|--|--|
| | 金額(円) | 構成比(%) | 金額(円) | 構成比(%) | 金額(円) | 構成比(%) | 金額(円) | 構成比(%) | 金額(円) | 構成比(%) | 金額(円) | 構成比(%) | 金額(円) | 構成比(%) | 金額(円) | 構成比(%) | 金額(円) | 構成比(%) | 金額(円) | 構成比(%) | 金額(円) | 構成比(%) | 金額(円) | 構成比(%) | 金額(円) | 構成比(%) | 金額(円) | 構成比(%) | | |
| 医療収益 | 65,949,941 | 100% | 22,953,479 | 100% | 9,937,573 | 100% | 23,663,300 | 100% | 12,488,526 | 100% | 8,166,840 | 100% | 3,600,107 | 100% | 21,876,545 | 100% | 8,288,883 | 100% | 7,740,202 | 100% | 5,607,628 | 100% | 5,081,838 | 100% | 1,089,085 | 100% | | | | |
| 医療費用 | 78,715,459 | 119% | 25,019,854 | 109% | 17,318,439 | 174% | 25,891,325 | 109% | 19,472,904 | 156% | 9,738,476 | 119% | 7,347,951 | 204% | 22,477,950 | 103% | 17,216,943 | 208% | 13,298,849 | 172% | 8,713,463 | 155% | 8,210,213 | 162% | 4,623,779 | 425% | | | | |
| 材料費 | 22,624,771 | 34% | 7,384,302 | 32% | 3,925,061 | 39% | 11,327,993 | 48% | 3,749,069 | 30% | 1,941,469 | 24% | 994,350 | 28% | 9,239,595 | 42% | 2,252,845 | 27% | 2,433,352 | 31% | 894,324 | 16% | 1,064,736 | 21% | 221,901 | 20% | | | | |
| 給与費 | 38,974,531 | 59% | 10,321,434 | 45% | 9,442,525 | 95% | 8,971,833 | 38% | 9,642,389 | 77% | 4,975,906 | 61% | 3,459,469 | 96% | 7,995,373 | 37% | 10,137,757 | 122% | 6,354,136 | 82% | 4,388,728 | 78% | 4,304,059 | 85% | 3,123,607 | 287% | | | | |
| 委託費 | 6,944,493 | 11% | 2,946,669 | 13% | 1,393,790 | 14% | 1,903,764 | 8% | 2,476,531 | 20% | 1,025,013 | 13% | 1,150,065 | 32% | 1,892,730 | 9% | 1,908,899 | 23% | 1,837,273 | 24% | 1,365,074 | 24% | 884,521 | 17% | 340,349 | 31% | | | | |
| 設備関係費 | 6,681,690 | 10% | 2,477,186 | 11% | 1,737,689 | 17% | 2,334,755 | 10% | 2,393,216 | 19% | 1,163,194 | 14% | 1,225,885 | 34% | 2,155,439 | 10% | 1,932,558 | 23% | 1,737,093 | 22% | 1,398,989 | 25% | 1,234,544 | 24% | 602,786 | 55% | | | | |
| その他医療費用 | 3,489,973 | 5% | 1,890,262 | 8% | 819,374 | 8% | 1,352,980 | 6% | 1,211,698 | 10% | 632,894 | 8% | 518,182 | 14% | 1,194,814 | 5% | 984,884 | 12% | 936,994 | 12% | 666,347 | 12% | 722,353 | 14% | 335,136 | 31% | | | | |
| 収支差額 | -12,765,517 | -19% | -2,066,374 | -9% | -7,380,866 | -74% | -2,228,025 | -9% | -6,984,378 | -56% | -1,571,635 | -19% | -3,747,844 | -104% | -601,406 | -3% | -8,928,060 | -108% | -5,558,647 | -72% | -3,105,835 | -55% | -3,128,374 | -62% | -3,534,694 | -325% | | | | |
| 医療外収益 | 2,197,013 | 3% | 318,467 | 1% | 301,616 | 3% | 505,916 | 2% | 535,389 | 4% | 194,194 | 2% | 190,512 | 5% | 435,937 | 2% | 553,245 | 7% | 521,938 | 7% | 303,158 | 5% | 548,595 | 11% | 383,084 | 35% | | | | |
| 医療外費用 | 413,310 | 1% | 101,123 | 0% | 102,060 | 1% | 136,224 | 1% | 125,756 | 1% | 54,602 | 1% | 56,151 | 2% | 108,559 | 0% | 132,107 | 2% | 173,476 | 2% | 83,970 | 1% | 179,909 | 4% | 139,749 | 13% | | | | |
| 総収支差額 | -10,981,815 | -17% | -1,849,031 | -8% | -7,181,311 | -72% | -1,858,333 | -8% | -6,574,745 | -53% | -1,432,043 | -18% | -3,613,483 | -100% | -274,028 | -1% | -8,506,921 | -103% | -5,210,185 | -67% | -2,886,647 | -51% | -2,759,688 | -54% | -3,291,359 | -302% | | | | |
| 病院数 | 55 | | 34 | | 40 | | 53 | | 54 | | 44 | | 44 | | 49 | | 34 | | 46 | | 38 | | 43 | | 31 | | | | | |

②平成23年度調査

| 平成23年度 | 01内科 | | 08循環器科 | | 09小児科 | | 10外科 | | 11整形外科 | | 14脳神経外科 | | 19皮膚科 | | 20泌尿器科 | | 23産婦人科 | | 26眼科 | | 27耳鼻いんこう科 | | 30放射線科 | | 31麻酔科 | | | | | |
|---------|------------|--------|------------|--------|------------|--------|------------|--------|------------|--------|-----------|--------|------------|--------|------------|--------|------------|--------|------------|--------|------------|--------|------------|--------|------------|--------|-------|--------|--|--|
| | 金額(円) | 構成比(%) | 金額(円) | 構成比(%) | 金額(円) | 構成比(%) | 金額(円) | 構成比(%) | 金額(円) | 構成比(%) | 金額(円) | 構成比(%) | 金額(円) | 構成比(%) | 金額(円) | 構成比(%) | 金額(円) | 構成比(%) | 金額(円) | 構成比(%) | 金額(円) | 構成比(%) | 金額(円) | 構成比(%) | 金額(円) | 構成比(%) | 金額(円) | 構成比(%) | | |
| 医療収益 | 62,925,492 | 100% | 23,237,198 | 100% | 10,427,900 | 100% | 22,567,444 | 100% | 13,726,686 | 100% | 8,421,542 | 100% | 3,650,687 | 100% | 21,792,608 | 100% | 9,599,393 | 100% | 7,653,622 | 100% | 6,548,493 | 100% | 6,741,377 | 100% | 1,143,702 | 100% | | | | |
| 医療費用 | 72,335,773 | 114% | 26,376,995 | 112% | 15,661,754 | 147% | 25,324,870 | 111% | 20,159,879 | 146% | 9,379,666 | 111% | 7,345,811 | 200% | 23,033,800 | 105% | 14,551,230 | 150% | 12,009,131 | 156% | 9,500,305 | 144% | 8,766,921 | 129% | 3,698,788 | 322% | | | | |
| 材料費 | 21,867,821 | 35% | 7,671,480 | 33% | 3,937,946 | 37% | 10,672,856 | 47% | 3,527,377 | 26% | 1,560,406 | 19% | 1,015,311 | 28% | 9,304,220 | 43% | 2,181,006 | 22% | 1,604,300 | 21% | 1,230,092 | 19% | 975,485 | 14% | 242,607 | 21% | | | | |
| 給与費 | 34,975,727 | 55% | 12,513,164 | 52% | 7,912,769 | 71% | 9,483,575 | 41% | 10,824,896 | 77% | 5,297,074 | 62% | 3,651,561 | 98% | 9,048,781 | 40% | 7,846,736 | 80% | 6,603,193 | 85% | 5,270,451 | 79% | 5,844,292 | 87% | 2,523,511 | 219% | | | | |
| 委託費 | 6,670,605 | 11% | 2,824,122 | 13% | 1,543,761 | 16% | 1,871,807 | 8% | 2,406,356 | 18% | 947,851 | 11% | 1,151,673 | 32% | 1,762,937 | 9% | 1,836,073 | 20% | 1,513,408 | 20% | 1,269,796 | 20% | 692,106 | 10% | 291,187 | 26% | | | | |
| 設備関係費 | 5,449,414 | 9% | 1,874,852 | 8% | 1,407,245 | 14% | 1,879,586 | 9% | 2,098,332 | 15% | 943,029 | 11% | 1,018,986 | 28% | 1,747,759 | 8% | 1,602,857 | 17% | 1,423,178 | 19% | 1,097,018 | 17% | 667,633 | 10% | 406,401 | 36% | | | | |
| その他医療費用 | 3,372,206 | 5% | 1,493,377 | 6% | 860,034 | 8% | 1,417,046 | 6% | 1,302,917 | 9% | 631,305 | 7% | 508,280 | 14% | 1,170,104 | 6% | 1,084,559 | 11% | 865,052 | 11% | 632,948 | 10% | 587,404 | 8% | 235,083 | 20% | | | | |
| 収支差額 | -9,410,281 | -14% | -3,139,797 | -12% | -5,233,854 | -47% | -2,757,427 | -11% | -6,433,193 | -46% | -958,124 | -11% | -3,695,124 | -100% | -1,241,192 | -5% | -4,951,837 | -50% | -4,355,510 | -56% | -2,951,812 | -44% | -2,025,544 | -29% | -2,555,086 | -222% | | | | |
| 医療外収益 | 973,213 | 2% | 474,161 | 2% | 358,757 | 4% | 488,460 | 2% | 381,948 | 3% | 208,560 | 3% | 200,738 | 6% | 319,695 | 2% | 515,532 | 6% | 515,161 | 7% | 307,718 | 5% | 254,986 | 4% | 470,016 | 42% | | | | |
| 医療外費用 | 517,664 | 1% | 131,508 | 0% | 162,804 | 1% | 196,713 | 1% | 174,143 | 1% | 76,683 | 1% | 82,160 | 2% | 164,678 | 1% | 210,505 | 2% | 204,504 | 3% | 124,212 | 2% | 92,499 | 1% | 109,159 | 10% | | | | |
| 総収支差額 | -8,954,733 | -13% | -2,797,145 | -11% | -5,037,901 | -45% | -2,465,680 | -9% | -6,225,387 | -44% | -826,247 | -9% | -3,576,546 | -96% | -1,086,175 | -5% | -4,646,810 | -47% | -4,044,853 | -52% | -2,768,306 | -41% | -1,863,056 | -27% | -2,194,229 | -190% | | | | |
| 病院数 | 55 | | 34 | | 40 | | 53 | | 53 | | 44 | | 44 | | 48 | | 34 | | 46 | | 39 | | 43 | | 30 | | | | | |

(3) 入院・外来計

①平成22年度調査

| 平成22年度 | 01内科 | | 08循環器科 | | 09小児科 | | 10外科 | | 11整形外科 | | 14脳神経外科 | | 19皮膚科 | | 20泌尿器科 | | 23産婦人科 | | 26眼科 | | 27耳鼻いんこう科 | | 30放射線科 | | 31麻酔科 | |
|---------|-------------|--------|-------------|--------|------------|--------|------------|--------|------------|--------|------------|--------|------------|--------|------------|--------|------------|--------|------------|--------|------------|--------|------------|--------|------------|--------|
| | 金額(円) | 構成比(%) | 金額(円) | 構成比(%) | 金額(円) | 構成比(%) | 金額(円) | 構成比(%) | 金額(円) | 構成比(%) | 金額(円) | 構成比(%) | 金額(円) | 構成比(%) | 金額(円) | 構成比(%) | 金額(円) | 構成比(%) | 金額(円) | 構成比(%) | 金額(円) | 構成比(%) | 金額(円) | 構成比(%) | 金額(円) | 構成比(%) |
| 医療収益 | 159,372,346 | 100% | 109,139,990 | 100% | 37,408,680 | 100% | 94,488,274 | 100% | 87,920,407 | 100% | 50,291,483 | 100% | 6,324,708 | 100% | 43,991,167 | 100% | 37,742,799 | 100% | 23,299,453 | 100% | 19,141,976 | 100% | 7,553,561 | 100% | 3,335,868 | 100% |
| 医療費用 | 187,670,279 | 118% | 103,999,733 | 95% | 41,349,759 | 111% | 84,270,470 | 89% | 79,838,170 | 91% | 45,545,209 | 91% | 10,814,732 | 171% | 42,235,899 | 96% | 46,437,085 | 123% | 21,473,009 | 92% | 19,919,496 | 104% | 10,008,642 | 133% | 6,848,073 | 205% |
| 材料費 | 51,869,733 | 33% | 45,384,940 | 42% | 7,237,286 | 19% | 24,986,504 | 26% | 21,203,517 | 24% | 10,098,095 | 20% | 1,484,124 | 23% | 13,590,529 | 31% | 6,411,935 | 17% | 4,141,454 | 18% | 2,686,092 | 14% | 1,651,910 | 22% | 924,571 | 28% |
| 給与費 | 95,649,537 | 60% | 40,862,406 | 37% | 24,199,228 | 65% | 41,546,457 | 44% | 41,114,168 | 47% | 25,362,443 | 50% | 5,612,355 | 89% | 19,044,033 | 43% | 28,296,003 | 75% | 11,090,841 | 48% | 11,173,427 | 58% | 5,188,625 | 69% | 4,250,993 | 127% |
| 委託費 | 12,536,793 | 8% | 5,449,412 | 5% | 2,542,274 | 7% | 4,655,438 | 5% | 5,219,379 | 6% | 2,621,869 | 5% | 1,344,425 | 21% | 2,895,110 | 7% | 3,536,727 | 9% | 2,249,101 | 10% | 1,961,140 | 10% | 946,801 | 13% | 427,841 | 13% |
| 設備関係費 | 17,528,402 | 11% | 6,889,733 | 6% | 4,789,138 | 13% | 7,865,013 | 8% | 7,634,569 | 9% | 4,561,691 | 9% | 1,622,681 | 26% | 4,114,932 | 9% | 4,993,144 | 13% | 2,507,116 | 11% | 2,727,361 | 14% | 1,398,490 | 19% | 805,199 | 24% |
| その他医療費用 | 10,085,814 | 6% | 5,413,242 | 5% | 2,581,832 | 7% | 5,217,058 | 6% | 4,666,537 | 5% | 2,901,112 | 6% | 751,148 | 12% | 2,591,294 | 6% | 3,199,275 | 8% | 1,484,497 | 6% | 1,371,475 | 7% | 822,816 | 11% | 439,469 | 13% |
| 収支差額 | -28,297,932 | -18% | 5,140,257 | 5% | -3,941,078 | -11% | 10,217,804 | 11% | 8,082,237 | 9% | 4,746,274 | 9% | -4,490,024 | -71% | 1,755,268 | 4% | -8,694,286 | -23% | 1,826,445 | 8% | -777,519 | -4% | -2,455,081 | -33% | -3,512,205 | -105% |
| 医療外収益 | 9,021,006 | 6% | 4,405,858 | 4% | 2,851,271 | 8% | 4,831,769 | 5% | 4,629,496 | 5% | 3,330,326 | 7% | 590,309 | 9% | 1,840,872 | 4% | 3,447,304 | 9% | 1,141,543 | 5% | 1,469,852 | 8% | 636,156 | 8% | 568,033 | 17% |
| 医療外費用 | 2,887,877 | 2% | 1,453,684 | 1% | 1,091,295 | 3% | 1,594,149 | 2% | 1,366,989 | 2% | 963,793 | 2% | 190,374 | 3% | 557,655 | 1% | 1,152,864 | 3% | 400,810 | 2% | 423,584 | 2% | 228,815 | 3% | 205,597 | 6% |
| 総収支差額 | -22,164,802 | -14% | 8,092,431 | 7% | -2,181,103 | -6% | 13,455,425 | 14% | 11,344,745 | 13% | 7,112,806 | 14% | -4,090,089 | -65% | 3,038,484 | 7% | -6,399,846 | -17% | 2,567,178 | 11% | 268,749 | 1% | -2,047,741 | -27% | -3,149,769 | -94% |
| 病院数 | 55 | 34 | 40 | 53 | 54 | 44 | 44 | 49 | 34 | 46 | 38 | 43 | 32 | | | | | | | | | | | | | |

②平成23年度調査

| 平成23年度 | 01内科 | | 08循環器科 | | 09小児科 | | 10外科 | | 11整形外科 | | 14脳神経外科 | | 19皮膚科 | | 20泌尿器科 | | 23産婦人科 | | 26眼科 | | 27耳鼻いんこう科 | | 30放射線科 | | 31麻酔科 | |
|---------|-------------|--------|-------------|--------|------------|--------|------------|--------|------------|--------|------------|--------|------------|--------|------------|--------|-------------|--------|------------|--------|------------|--------|------------|--------|------------|--------|
| | 金額(円) | 構成比(%) | 金額(円) | 構成比(%) | 金額(円) | 構成比(%) | 金額(円) | 構成比(%) | 金額(円) | 構成比(%) | 金額(円) | 構成比(%) | 金額(円) | 構成比(%) | 金額(円) | 構成比(%) | 金額(円) | 構成比(%) | 金額(円) | 構成比(%) | 金額(円) | 構成比(%) | 金額(円) | 構成比(%) | 金額(円) | 構成比(%) |
| 医療収益 | 189,893,847 | 100% | 104,254,244 | 100% | 40,660,124 | 100% | 86,575,032 | 100% | 74,179,815 | 100% | 51,616,009 | 100% | 7,380,001 | 100% | 45,916,864 | 100% | 41,092,952 | 100% | 17,997,349 | 100% | 18,997,699 | 100% | 10,928,877 | 100% | 3,640,199 | 100% |
| 医療費用 | 195,107,048 | 102% | 111,137,464 | 106% | 42,068,899 | 101% | 82,026,234 | 94% | 83,121,021 | 112% | 48,064,609 | 92% | 11,325,976 | 152% | 44,852,264 | 97% | 53,147,444 | 128% | 19,439,534 | 107% | 20,081,110 | 105% | 11,861,983 | 108% | 6,647,098 | 182% |
| 材料費 | 54,756,297 | 29% | 48,146,785 | 47% | 6,929,364 | 16% | 22,521,768 | 26% | 20,035,216 | 27% | 10,639,085 | 21% | 1,807,715 | 25% | 13,564,710 | 30% | 8,060,615 | 20% | 2,700,168 | 15% | 2,877,996 | 15% | 1,663,678 | 15% | 1,153,047 | 32% |
| 給与費 | 98,263,575 | 51% | 45,029,496 | 41% | 25,022,380 | 59% | 41,708,580 | 47% | 44,757,805 | 59% | 26,921,066 | 50% | 5,893,760 | 78% | 21,719,754 | 46% | 31,726,997 | 75% | 11,475,817 | 63% | 11,405,378 | 59% | 7,864,907 | 72% | 4,101,949 | 112% |
| 委託費 | 13,226,877 | 7% | 5,692,215 | 6% | 3,074,333 | 8% | 4,783,550 | 6% | 5,377,632 | 7% | 2,661,316 | 5% | 1,356,691 | 19% | 2,935,657 | 7% | 4,003,084 | 10% | 1,809,408 | 10% | 1,912,681 | 10% | 762,063 | 7% | 415,876 | 11% |
| 設備関係費 | 18,032,184 | 10% | 6,993,150 | 7% | 4,459,003 | 11% | 7,687,728 | 9% | 7,820,033 | 11% | 4,530,095 | 9% | 1,487,211 | 20% | 4,003,618 | 9% | 5,392,804 | 14% | 2,105,041 | 12% | 2,542,841 | 13% | 869,167 | 8% | 615,157 | 17% |
| その他医療費用 | 10,828,115 | 6% | 5,275,818 | 5% | 2,583,817 | 6% | 5,324,608 | 6% | 5,130,336 | 7% | 3,313,047 | 6% | 780,599 | 10% | 2,628,524 | 6% | 3,963,944 | 9% | 1,349,099 | 7% | 1,342,214 | 7% | 702,168 | 6% | 361,070 | 10% |
| 収支差額 | -5,213,201 | -2% | -6,883,220 | -6% | -1,408,775 | -1% | 4,548,798 | 6% | -8,941,207 | -12% | 3,551,400 | 8% | -3,945,976 | -52% | 1,064,600 | 3% | -12,054,492 | -28% | -1,442,185 | -7% | -1,083,411 | -5% | -933,106 | -8% | -3,006,899 | -82% |
| 医療外収益 | 6,518,588 | 3% | 4,301,114 | 4% | 2,810,514 | 7% | 3,962,444 | 5% | 2,971,848 | 4% | 2,578,446 | 5% | 464,093 | 6% | 1,580,351 | 4% | 3,208,676 | 8% | 912,899 | 5% | 1,458,014 | 8% | 363,446 | 3% | 618,387 | 17% |
| 医療外費用 | 3,618,010 | 2% | 1,336,130 | 1% | 1,363,092 | 3% | 1,697,395 | 2% | 1,416,494 | 2% | 1,021,674 | 2% | 195,888 | 2% | 756,331 | 2% | 1,573,280 | 3% | 391,130 | 2% | 496,618 | 3% | 136,905 | 1% | 193,366 | 5% |
| 総収支差額 | -2,312,623 | 0% | -3,918,237 | -3% | 38,647 | 3% | 6,813,847 | 9% | -7,385,853 | -9% | 5,108,172 | 12% | -3,677,771 | -48% | 1,888,620 | 5% | -10,419,096 | -23% | -920,415 | -4% | -122,016 | 0% | -706,565 | -6% | -2,581,879 | -70% |
| 病院数 | 55 | 34 | 40 | 53 | 53 | 44 | 44 | 48 | 34 | 47 | 39 | 43 | 31 | | | | | | | | | | | | | |