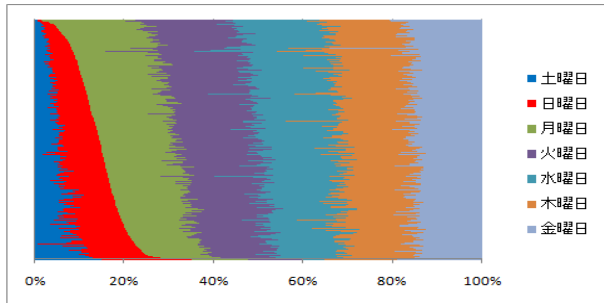
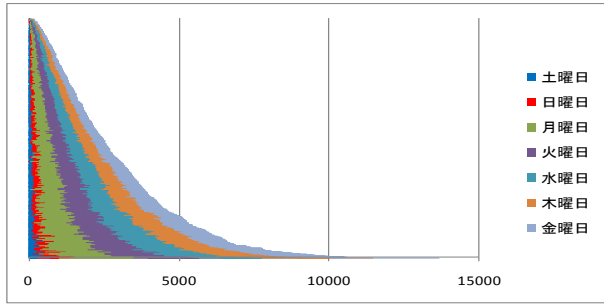


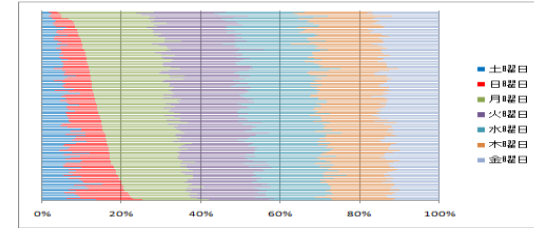
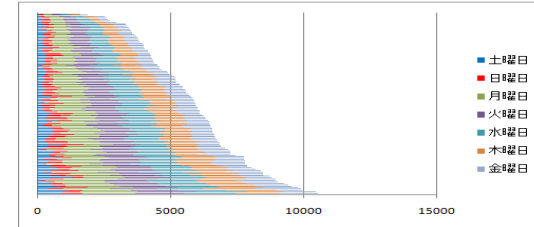
救命救急算定施設別 土日祝祭日入院患者数と割合

【一般病床数での補正なし】

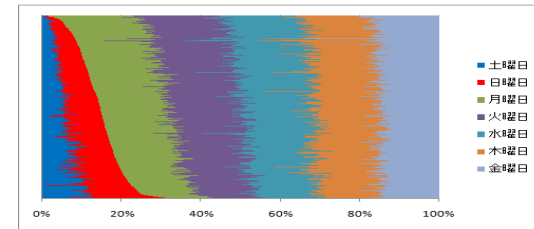
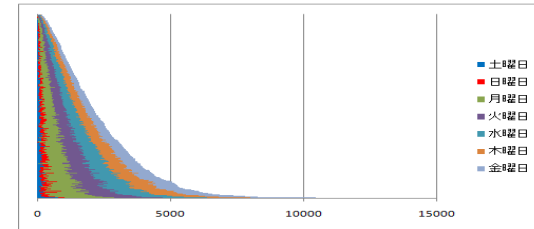
全体



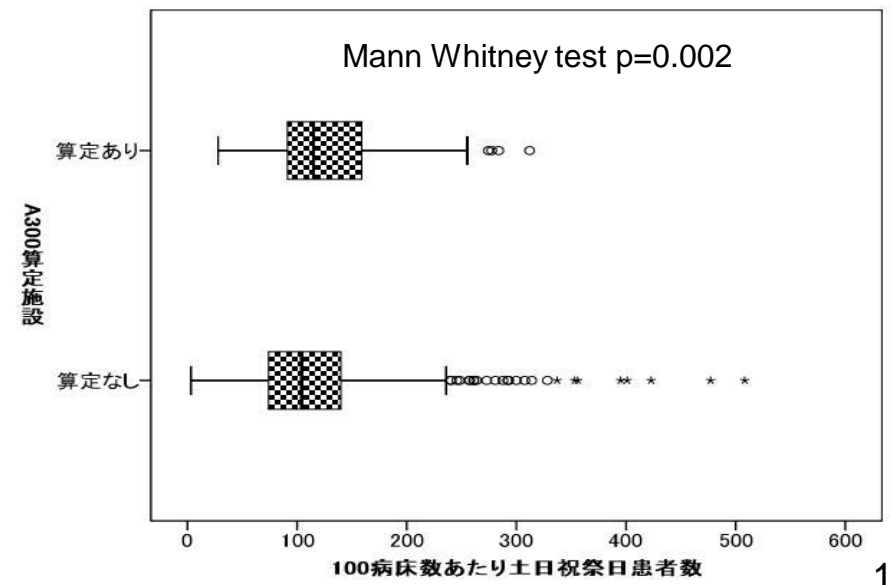
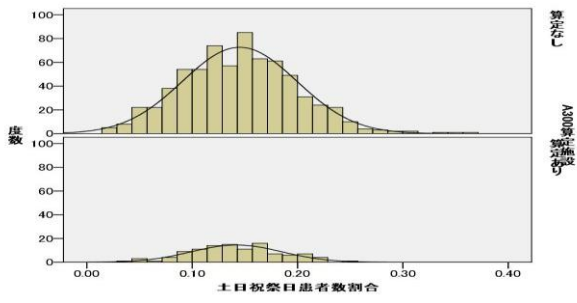
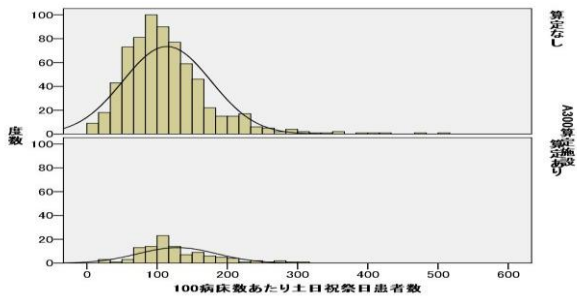
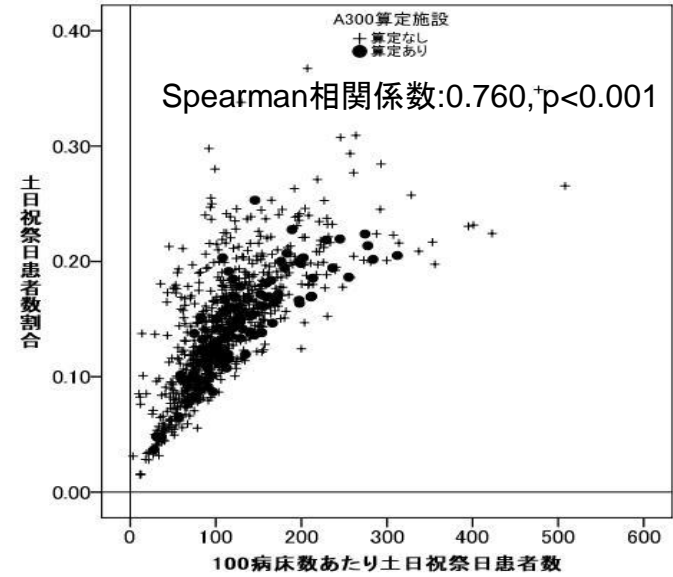
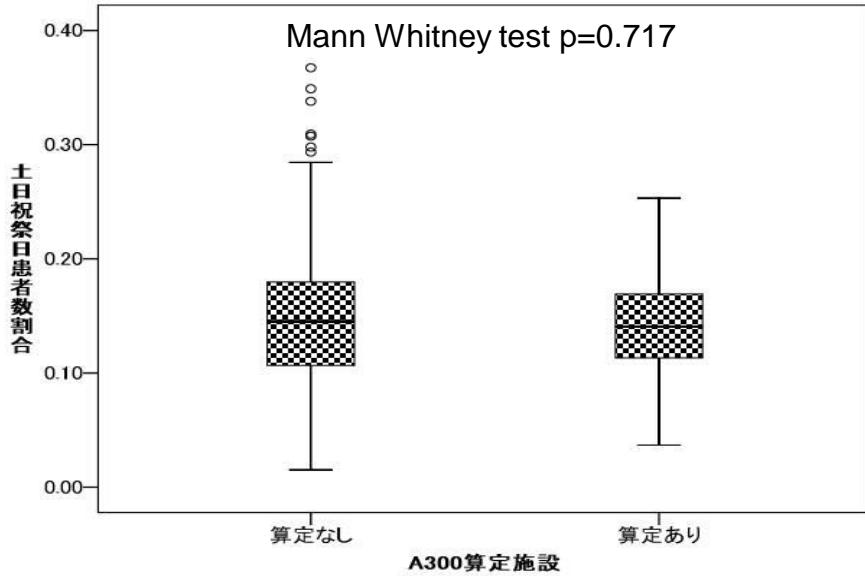
A300算定あり



A300算定なし

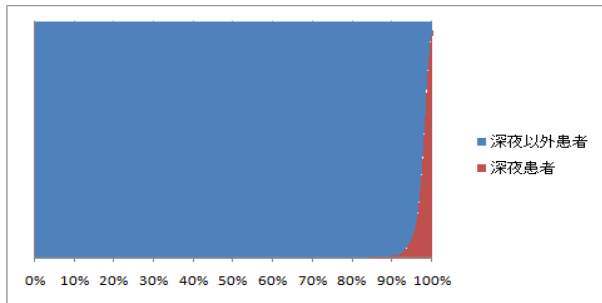
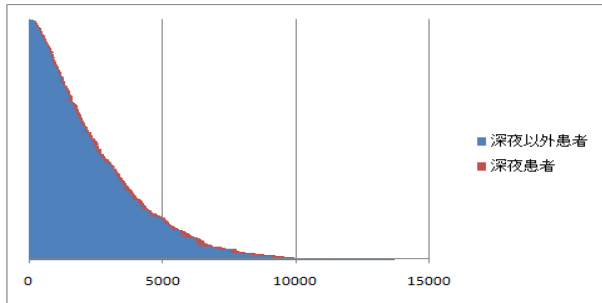


救命救急算定施設別 土日祝祭日入院患者数と割合

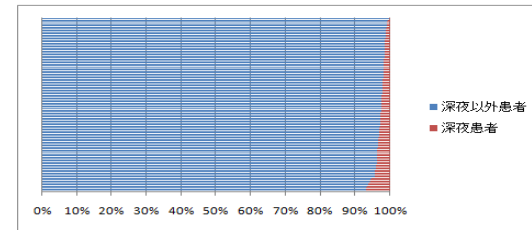
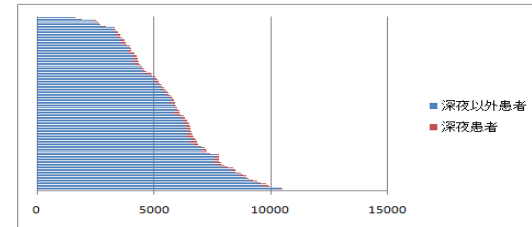


救命救急算定施設別 深夜入院患者数と割合 【一般病床数での補正なし】

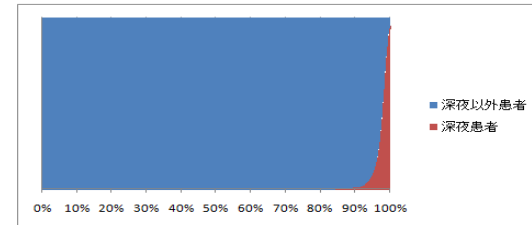
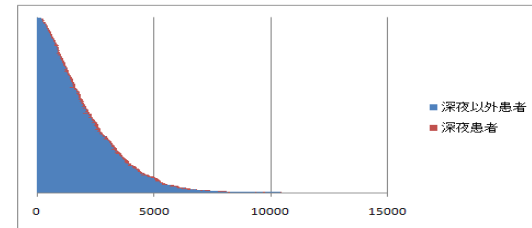
全体



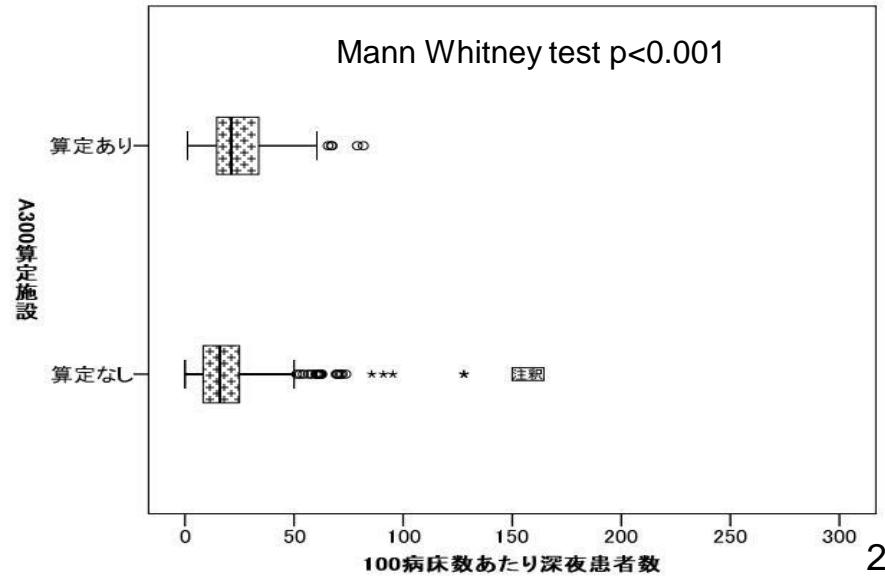
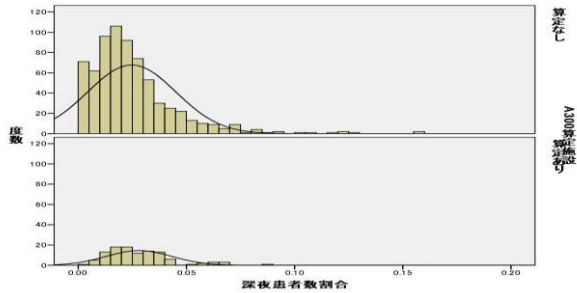
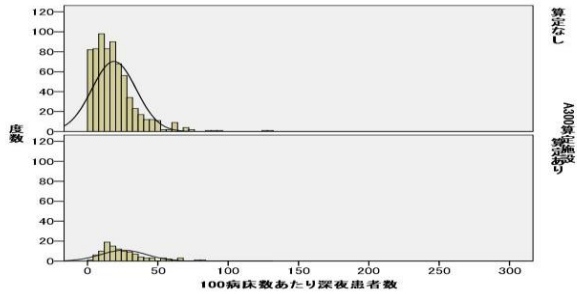
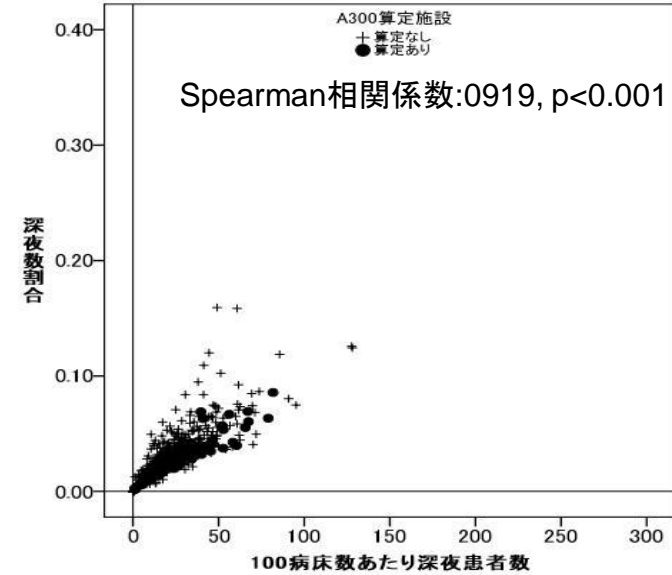
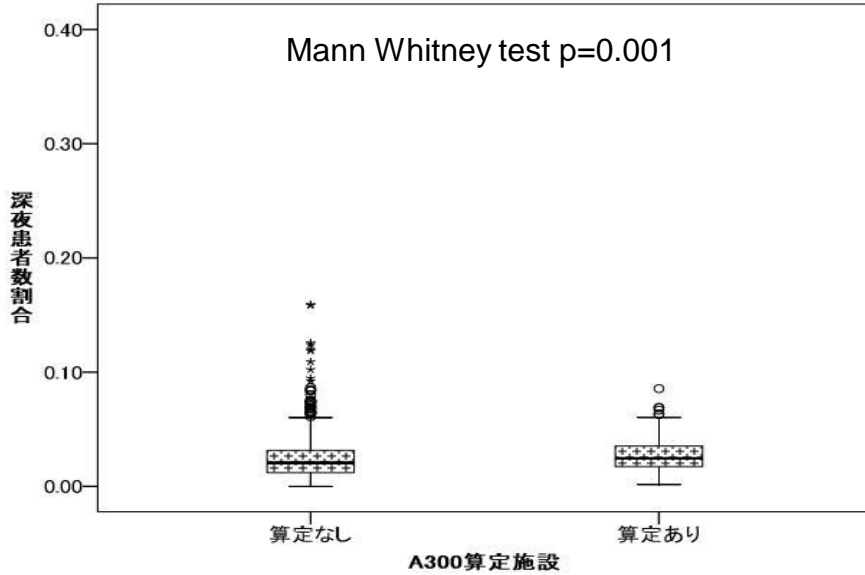
A300算定あり



A300算定なし

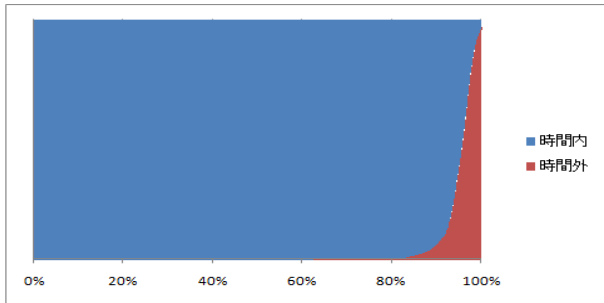
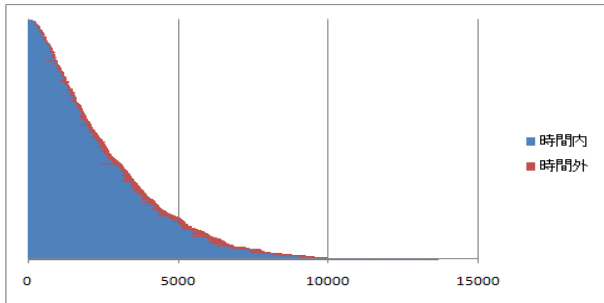


救命救急算定施設別 深夜入院患者数と割合

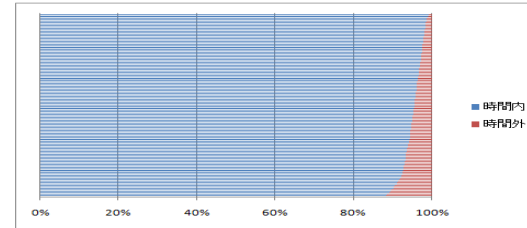
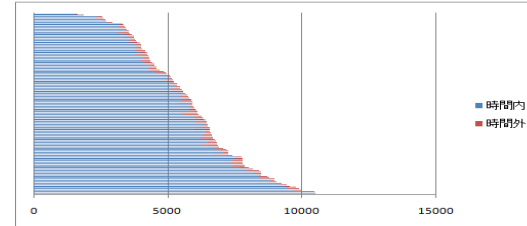


救命救急算定施設別 時間外入院患者数と割合 【一般病床数での補正なし】

全体



A300算定あり



A300算定なし

