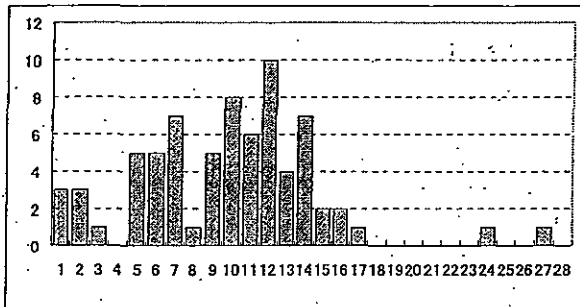


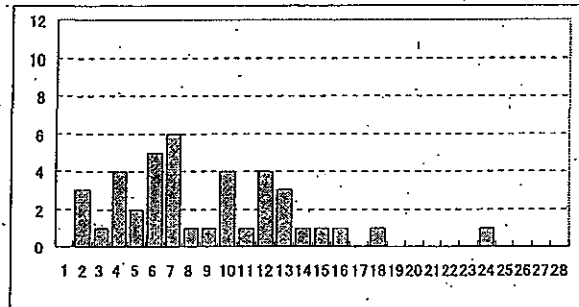
# 図35.昨シーズンとの比較

2006/2007

2007/2008



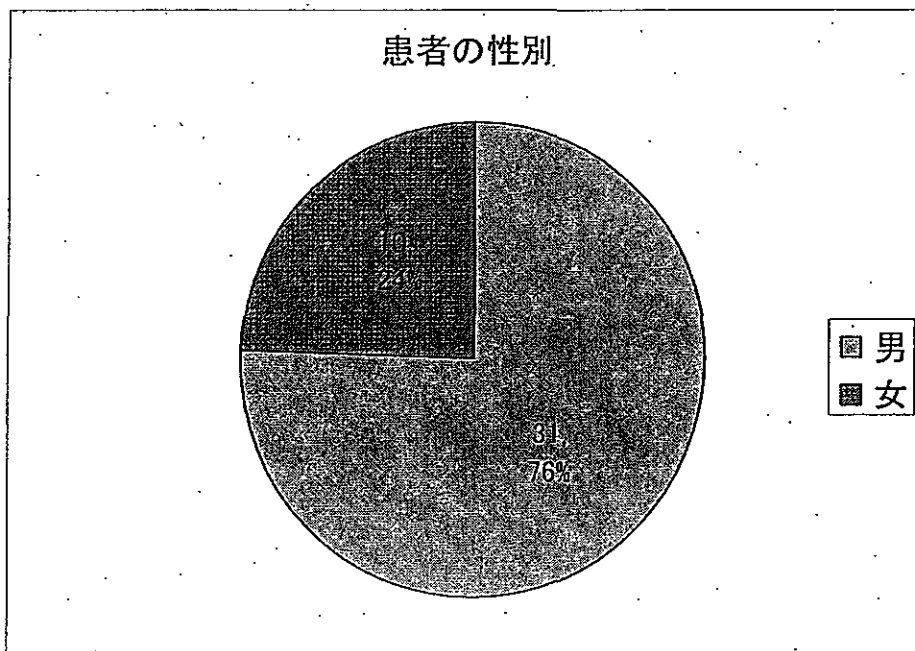
平均値9.93  
中央値10



平均値9.21  
中央値7

47

# 図36.患者の性別n=41

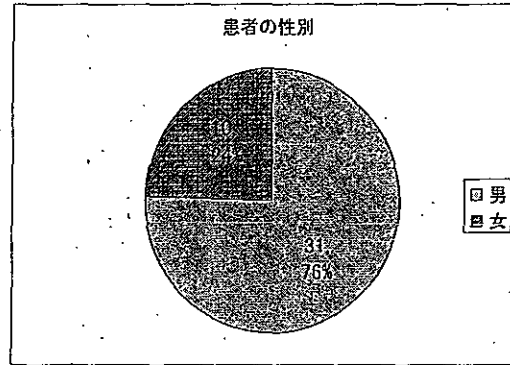
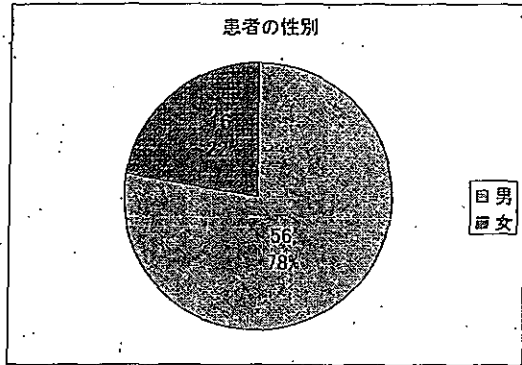


48

# 図37.昨シーズンとの比較

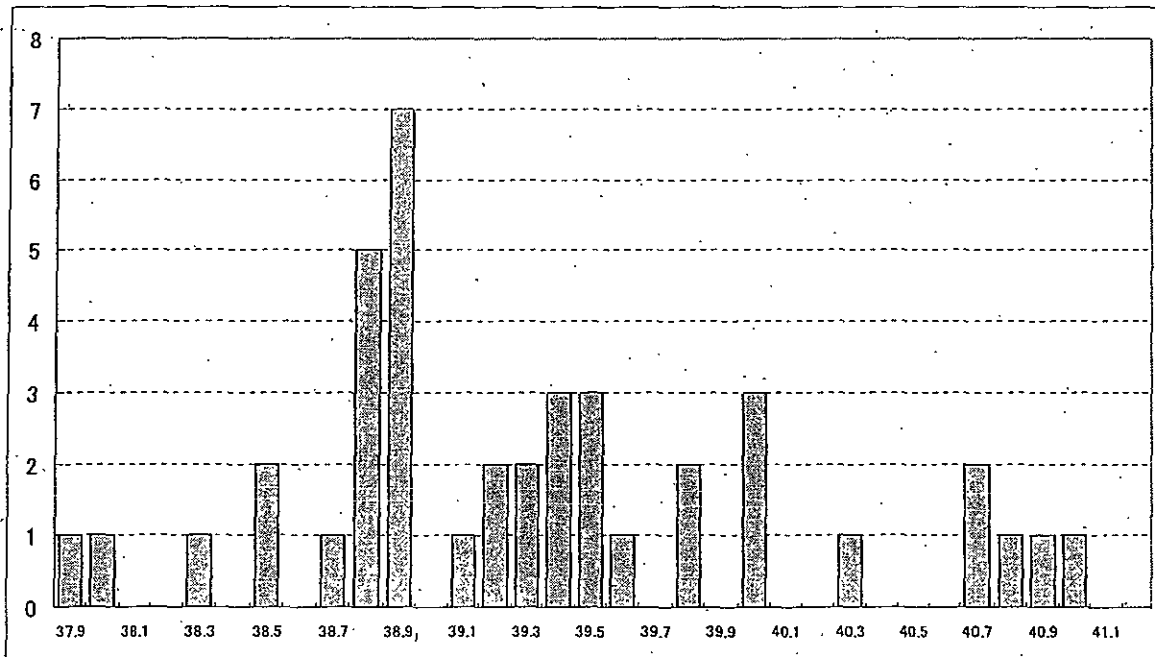
2006/2007

2007/2008



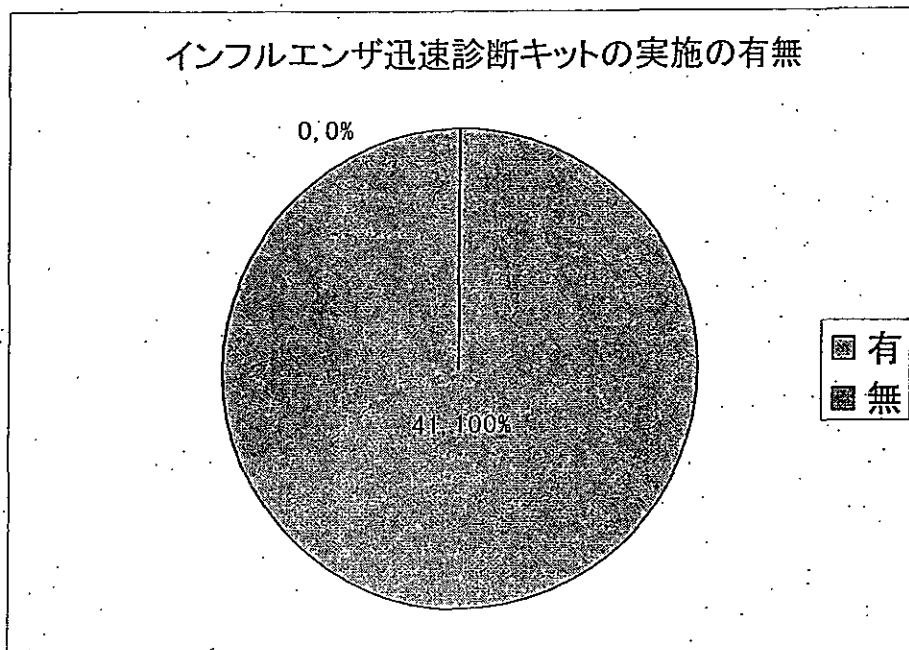
49

# 図38.最高体温n=41



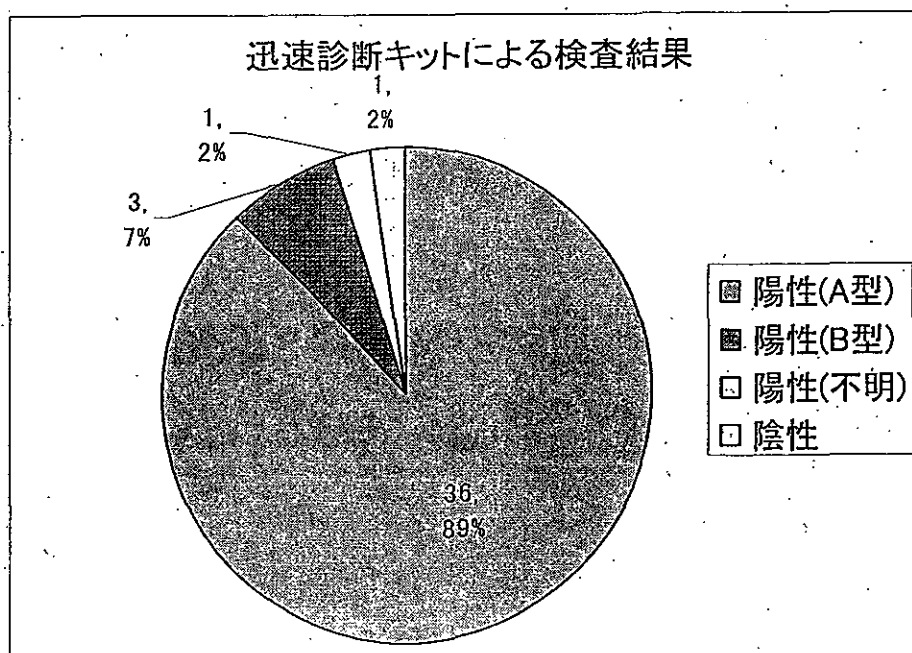
平均値39.34 50  
中央値39.2

図39.インフルエンザ迅速診断キットの実施の有無n=41



51

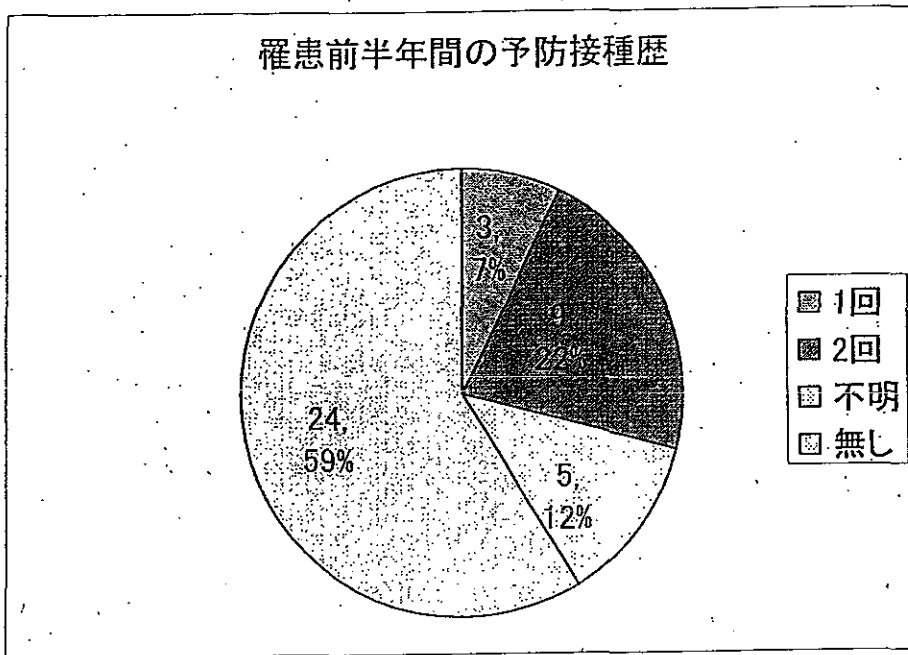
図40.迅速診断キットによる検査結果n=41



52

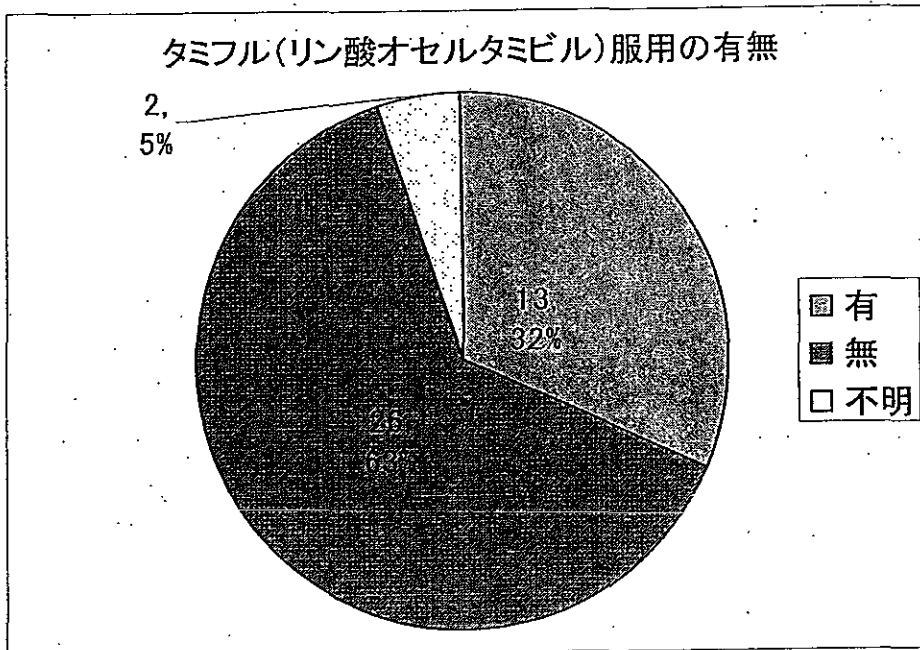
# 図41.罹患前半半年間の予防接種歴

n=41



53

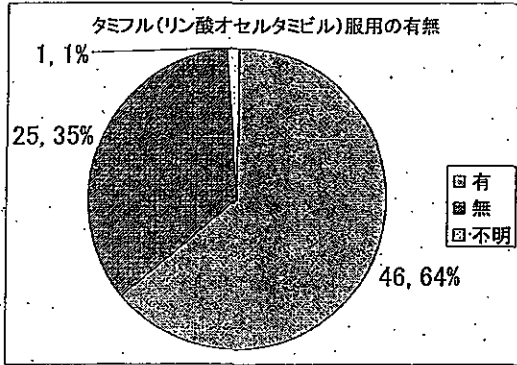
# 図42.タミフル（リン酸オセルタミビル）服用の有無n=41



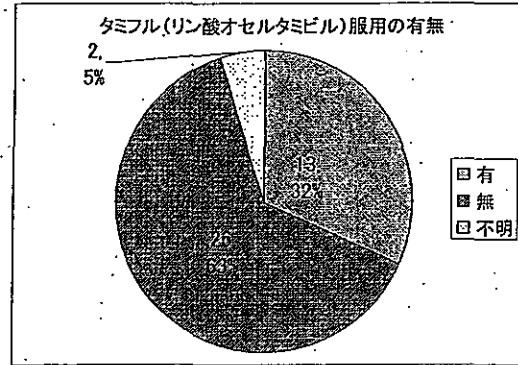
54

# 図43.昨シーズンとの比較

2006/2007

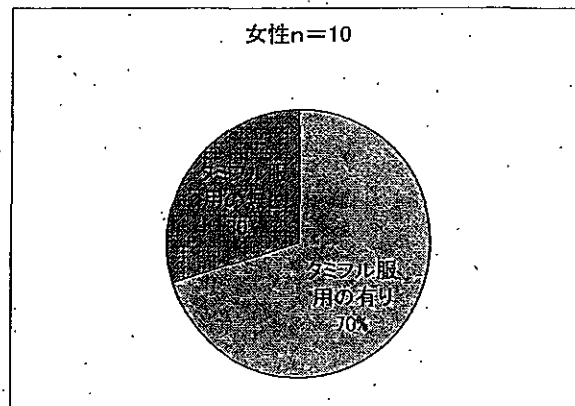
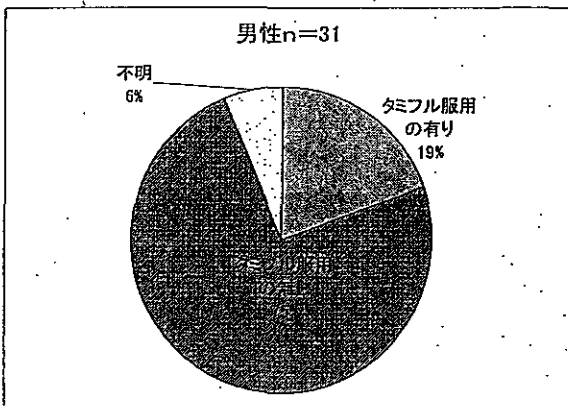


2007/2008



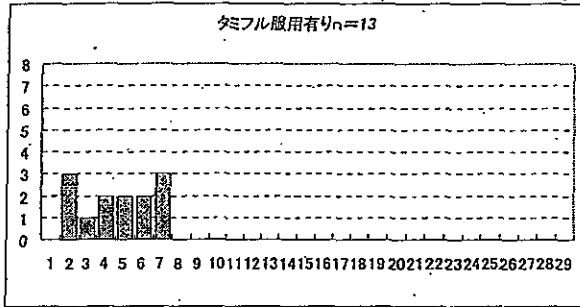
55

# 図44.タミフル(リン酸オセルタミビル)服用の有無の性別

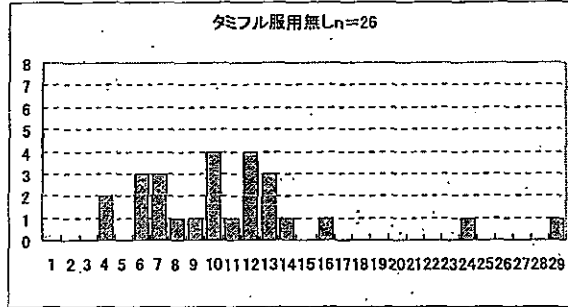


56

# 図45.タミフル（リン酸オセルタミビル）服用の有無の年齢別



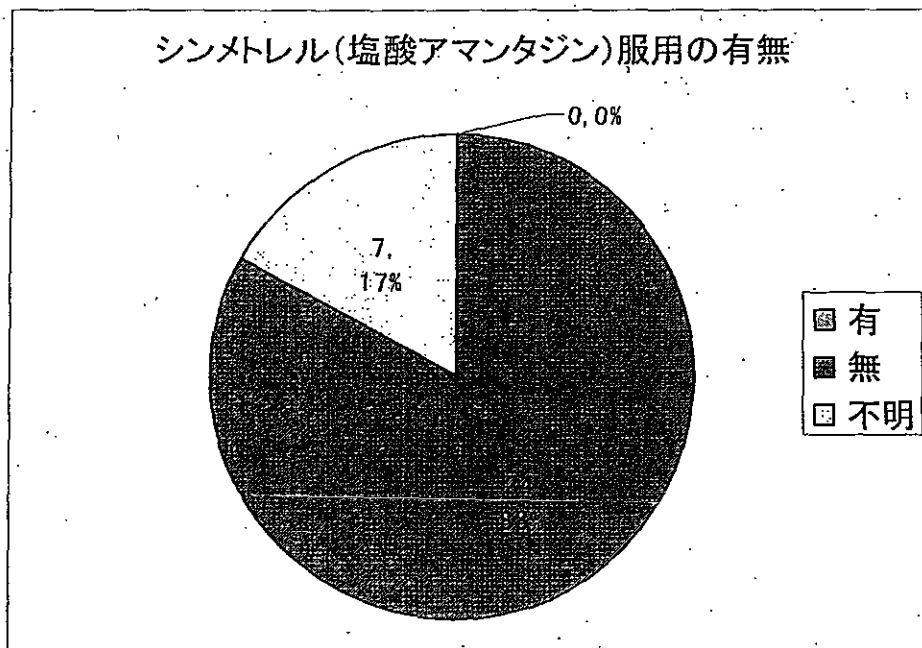
平均値4.6  
中央値5



平均値10.96  
中央値10

57

# 図46.シンメトレル（塩酸アマンタジン）服用の有無 n=41

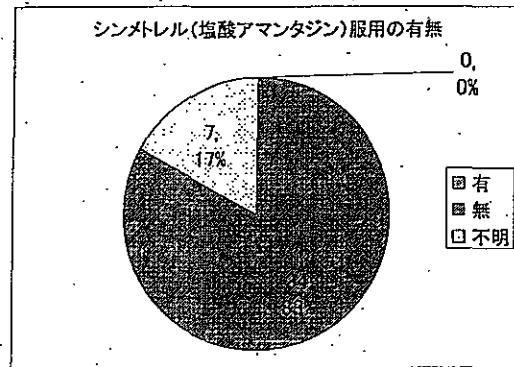
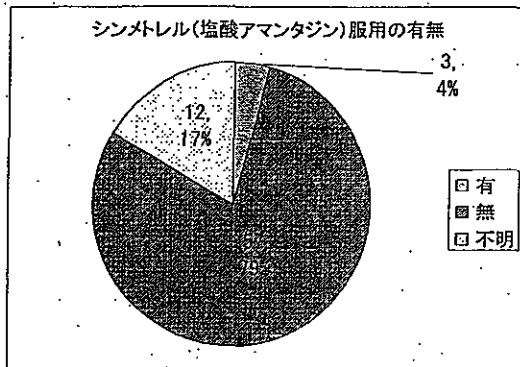


58

# 図47.昨シーズンとの比較

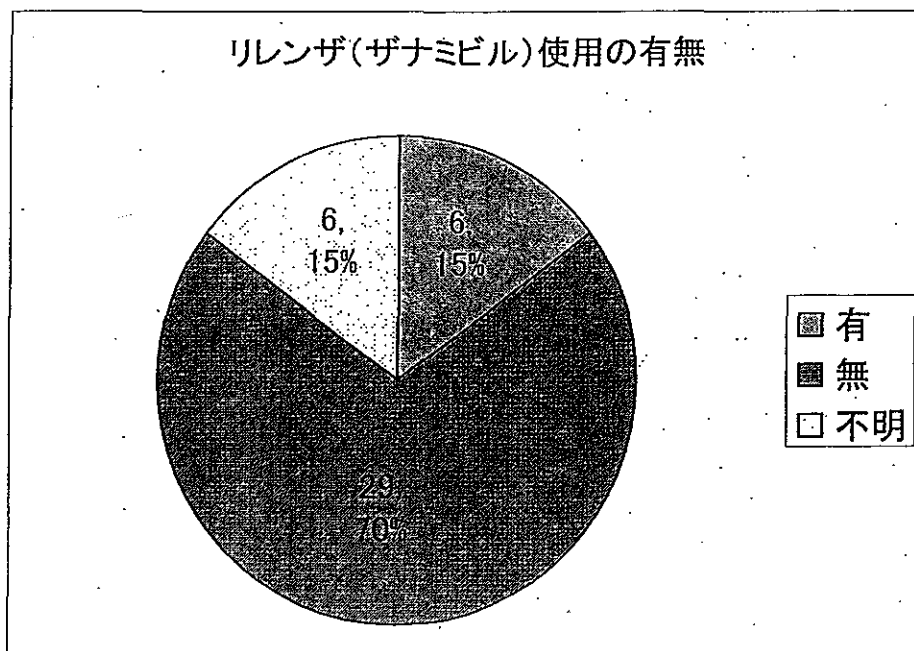
2006/2007

2007/2008



59

# 図48.リレンザ(ザナミビル)使用の有無n=41



60