

市町村ごと報告件数（確定版）

Table with 4 columns: 項, 保険者番号, 保険者名, 報告件数. Rows 1-51 listing municipalities and their respective report counts.

8,583

Table with 4 columns: 項, 保険者番号, 保険者名, 報告件数. Rows 52-106 listing municipalities and their respective report counts.

4,558

Table with 4 columns: 項, 保険者番号, 保険者名, 報告件数. Rows 107-158 listing municipalities and their respective report counts.

5,532

Table with 4 columns: 項, 保険者番号, 保険者名, 報告件数. Rows 159-211 listing municipalities and their respective report counts.

6,030

Table with 4 columns: 項, 保険者番号, 保険者名, 報告件数. Rows 212-262 listing municipalities and their respective report counts.

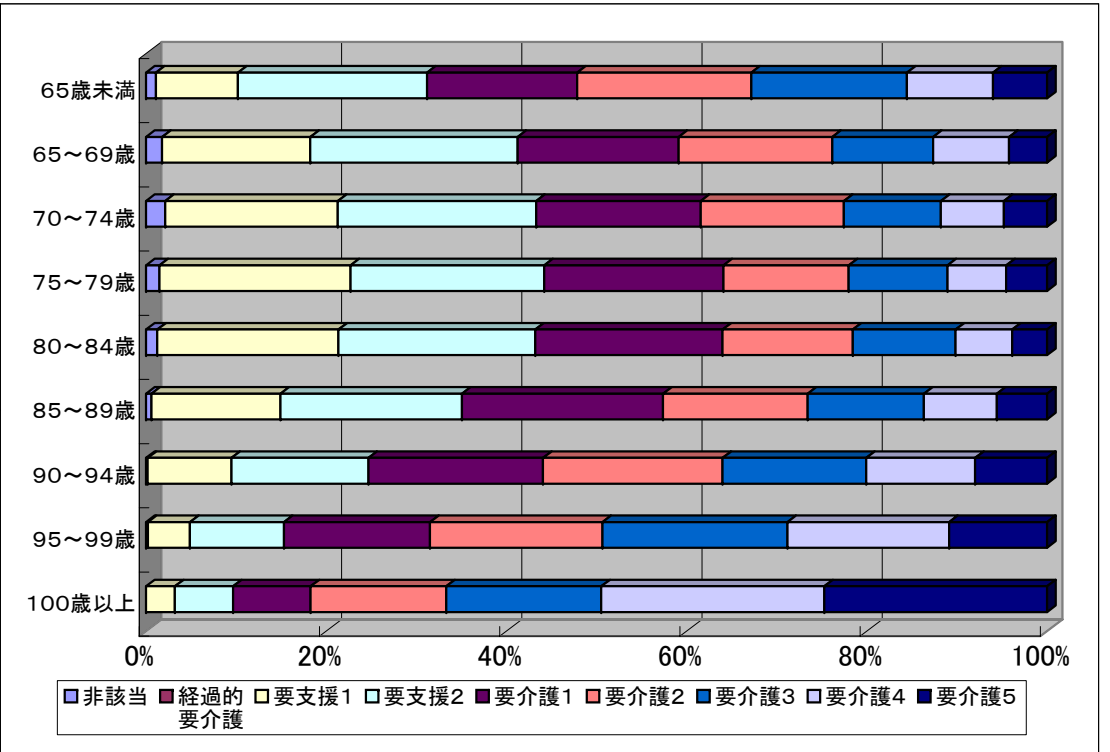
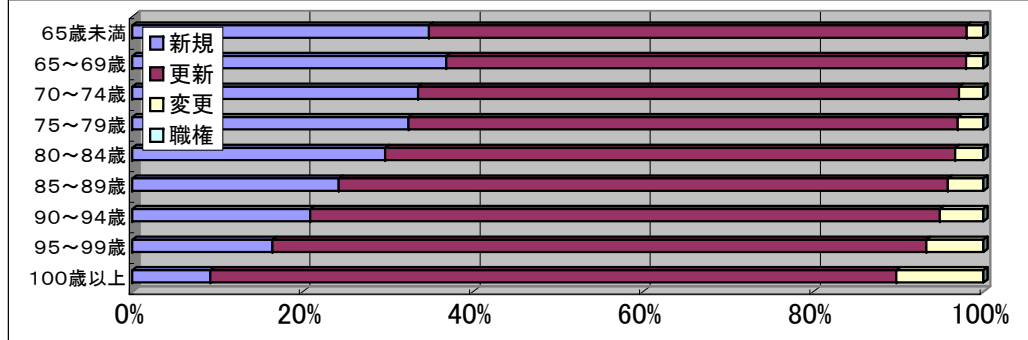
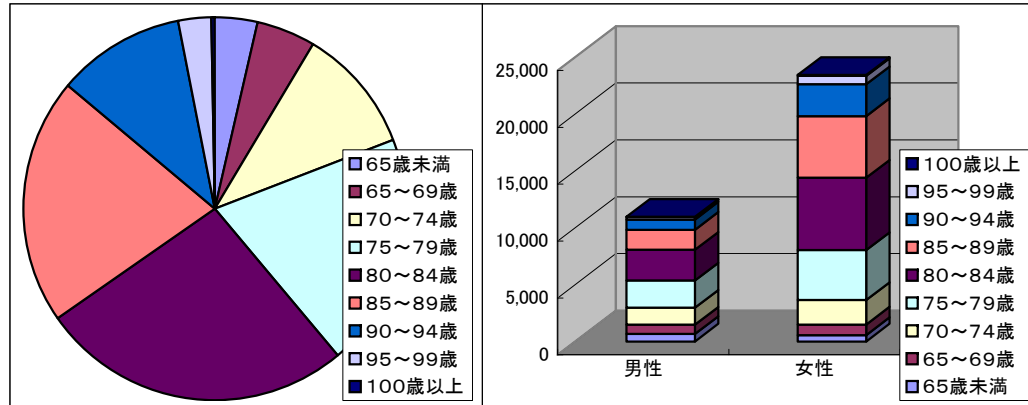
9,698

34,401

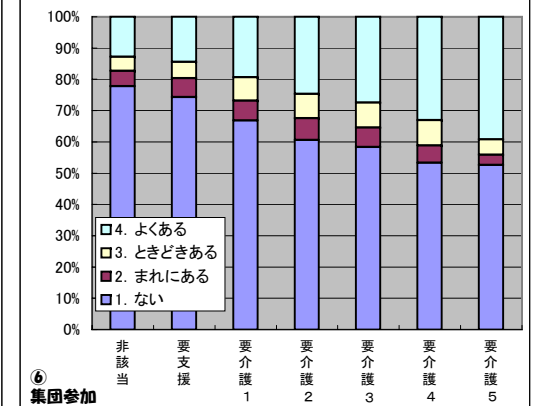
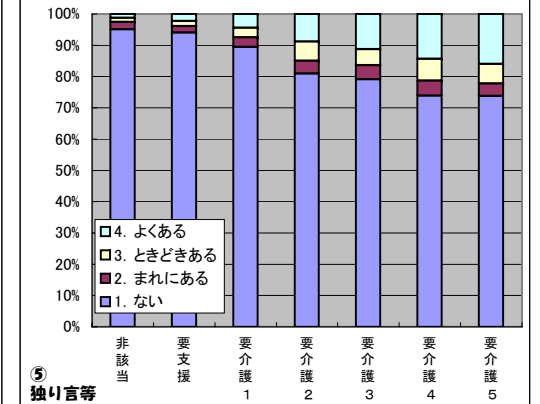
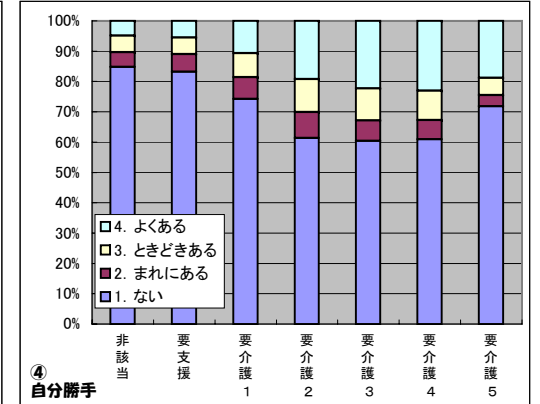
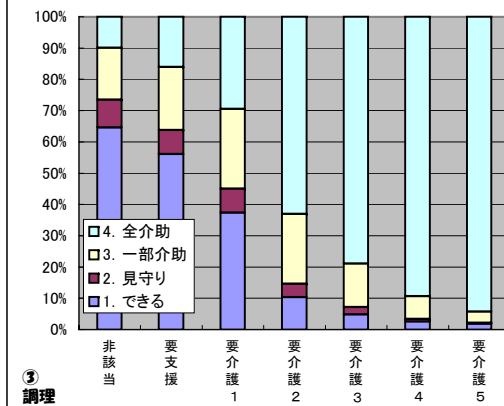
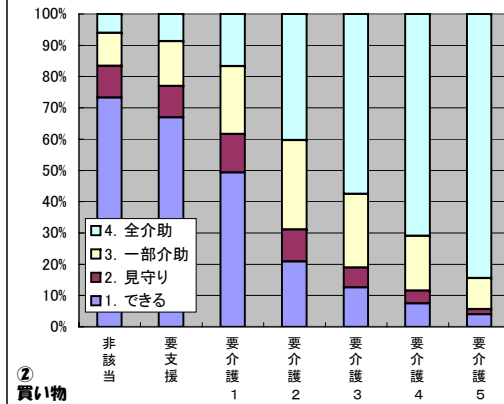
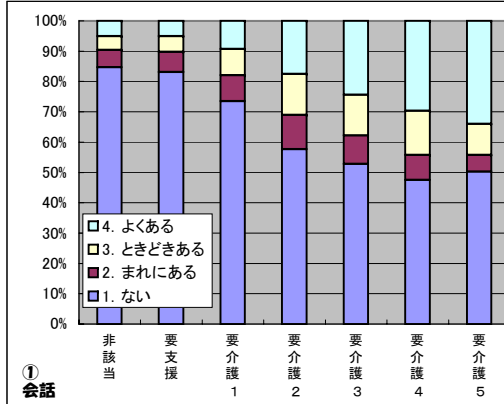
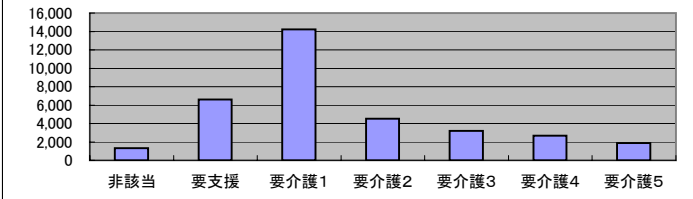
【要介護認定モデル事業（第一次）】

集計母体（確定版）

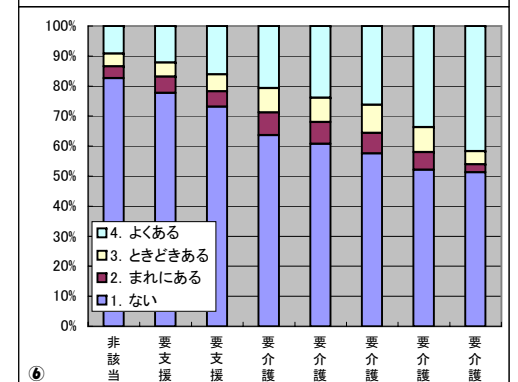
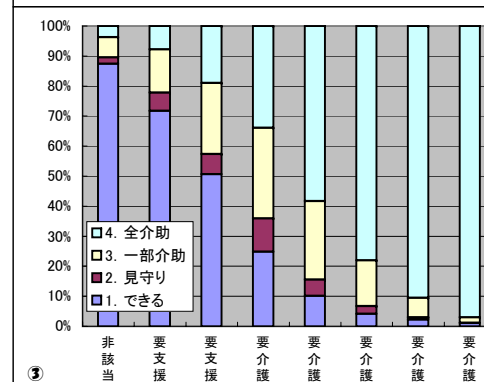
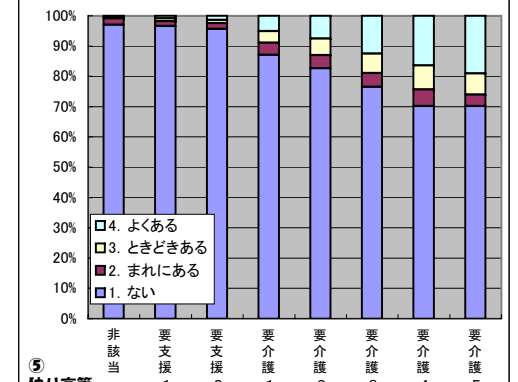
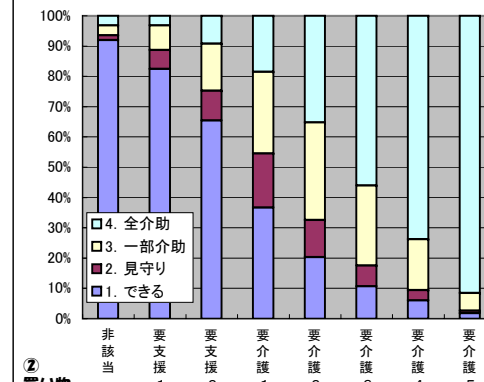
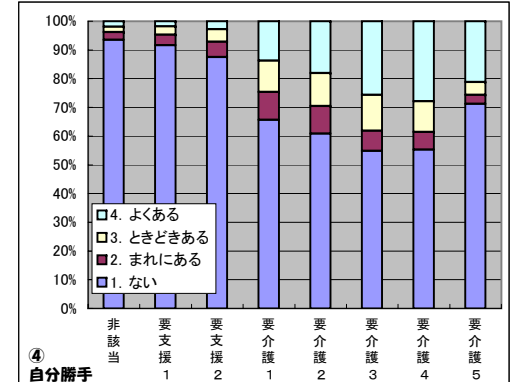
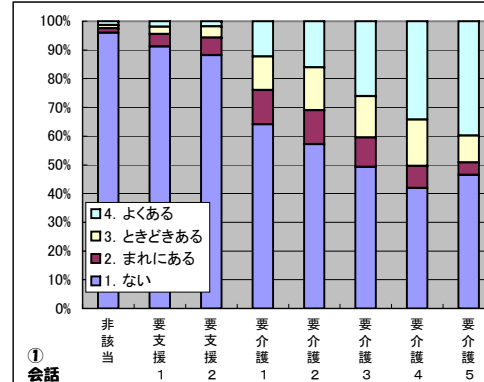
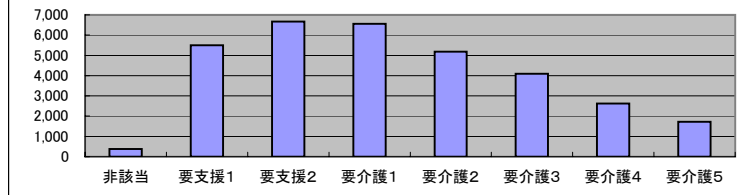
項	年齢階級	報告件数	構成比率	申請区分				性別		二次判定結果												
				新規	更新	変更	職権	男性	女性	非該当	経過的要介護	要支援1	要支援2	要介護1	要介護2	要介護3	要介護4	要介護5	再調査	取消	未判定	
1	65歳未満	1,228	3.57%	428	776	24	0	660	568	13	0	106	244	194	225	201	111	70	0	0	64	
2	65～69歳	1,743	5.07%	643	1,065	35	0	814	929	30	0	273	382	297	283	186	140	70	0	0	82	
3	70～74歳	3,650	10.61%	1,226	2,320	104	0	1,506	2,144	74	0	662	760	631	549	372	241	166	0	2	193	
4	75～79歳	6,783	19.72%	2,201	4,378	204	0	2,384	4,399	96	0	1,361	1,380	1,277	892	704	418	291	0	2	362	
5	80～84歳	9,051	26.31%	2,688	6,066	297	0	2,696	6,355	109	0	1,733	1,880	1,793	1,244	984	539	335	0	2	432	
6	85～89歳	7,193	20.91%	1,744	5,151	298	0	1,767	5,426	42	0	983	1,381	1,532	1,101	885	555	383	0	1	330	
7	90～94歳	3,696	10.74%	773	2,734	189	0	904	2,792	7	0	327	536	682	702	561	426	281	0	2	172	
8	95～99歳	959	2.79%	158	737	64	0	215	744	2	0	43	96	149	176	189	165	100	0	0	39	
9	100歳以上	98	0.28%	9	79	10	0	17	81	0	0	3	6	8	14	16	23	23	0	0	5	
合計 (構成比率)	34,401	100.00%	9,870	23,306	1,225	0	10,963	23,438	373	0	5,491	6,665	6,563	5,186	4,098	2,618	1,719	0	9	1,679		
			1.14%	67.75%	3.56%	0.00%	31.87%	68.13%	1.14%	0.00%	16.79%	20.37%	20.06%	15.85%	12.53%	8.00%	5.25%					
			32,713													9	1,679					
			95.09%													0.03%	4.88%					
			34,401				34,401	34,401														



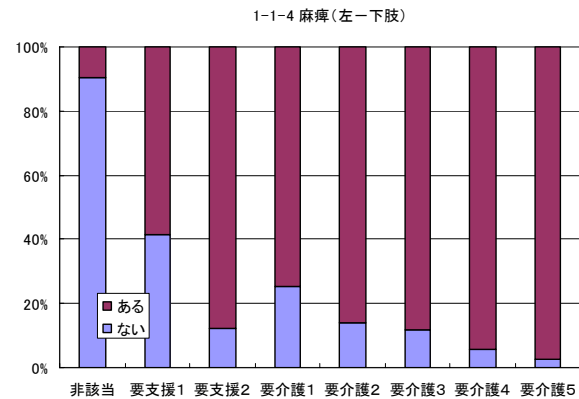
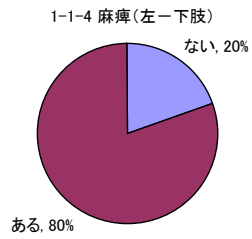
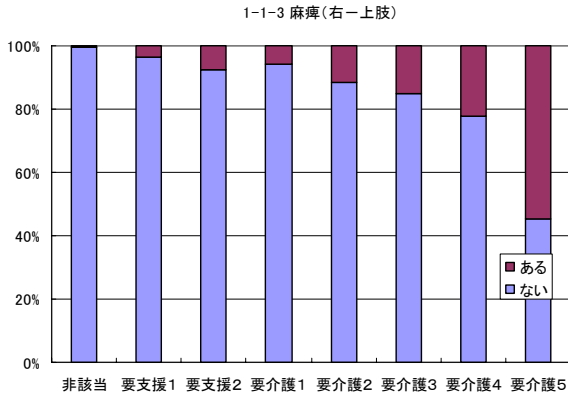
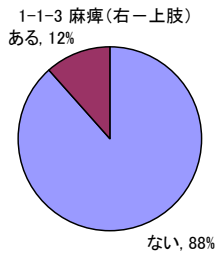
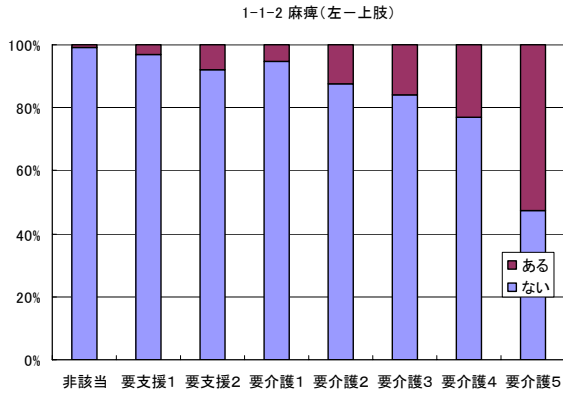
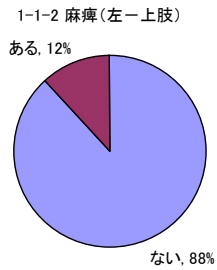
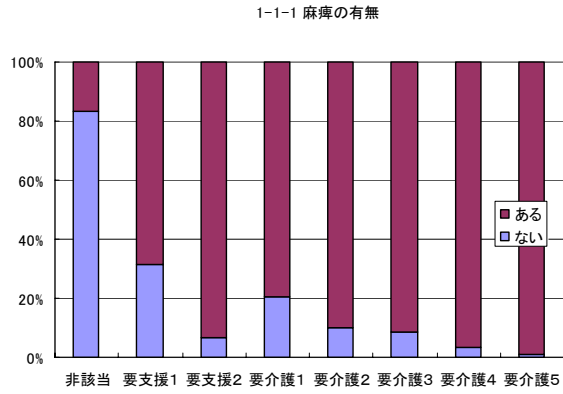
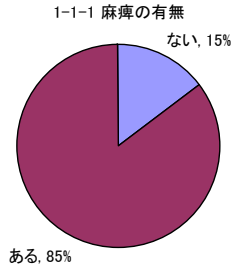
調査項目	選択肢	一次判定結果							合計	構成比
		非該当	要支援	要介護1	要介護2	要介護3	要介護4	要介護5		
① 会話 (11-3-16)	1. ない	1,128	5,488	10,442	2,609	1,685	1,267	942	23,561	68.49%
	2. まれにある	76	444	1,215	508	298	219	102	2,862	8.32%
	3. ときどきある	61	339	1,235	614	429	390	192	3,260	9.48%
	4. よくある	67	336	1,319	791	778	790	637	4,718	13.71%
② 買い物 (12-6)	1. できる	976	4,424	7,004	942	401	199	74	14,020	40.75%
	2. 見守り	135	661	1,750	463	202	109	31	3,351	9.74%
	3. 一部介助	141	949	3,083	1,293	753	468	186	6,873	19.98%
	4. 全介助	80	573	2,374	1,824	1,834	1,890	1,582	10,157	29.53%
③ 調理 (13-1)	1. できる	860	3,703	5,316	467	152	67	35	10,600	30.81%
	2. 見守り	119	512	1,081	195	76	23	6	2,012	5.85%
	3. 一部介助	221	1,330	3,619	1,011	443	194	66	6,884	20.01%
	4. 全介助	132	1,062	4,195	2,849	2,519	2,382	1,766	14,905	43.33%
④ 自分勝手 (14-9)	1. ない	1,129	5,498	10,542	2,772	1,927	1,623	1,344	24,835	72.19%
	2. まれにある	65	385	1,024	387	215	170	70	2,316	6.73%
	3. ときどきある	74	363	1,124	493	336	260	106	2,756	8.01%
	4. よくある	64	361	1,521	870	712	613	353	4,494	13.06%
⑤ 独り言等 (14-25)	1. ない	1,266	6,215	12,713	3,659	2,523	1,970	1,383	29,729	86.42%
	2. まれにある	32	137	438	189	144	128	74	1,142	3.32%
	3. ときどきある	17	105	428	275	164	186	117	1,292	3.76%
	4. よくある	17	150	632	399	359	382	299	2,238	6.51%
⑥ 集団参加 (14-26)	1. ない	1,036	4,911	9,503	2,742	1,860	1,422	985	22,459	65.29%
	2. まれにある	66	399	904	311	199	146	62	2,087	6.07%
	3. ときどきある	60	343	1,052	352	257	217	92	2,373	6.90%
	4. よくある	170	954	2,752	1,117	874	881	734	7,482	21.75%
計		1,332	6,607	14,211	4,522	3,190	2,666	1,873	34,401	
構成比		3.87%	19.21%	41.31%	13.14%	9.27%	7.75%	5.44%		100.00%

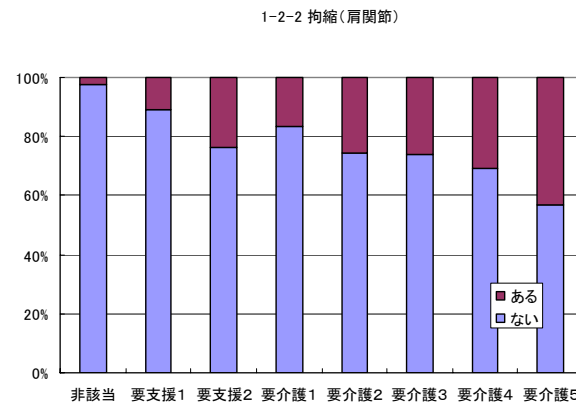
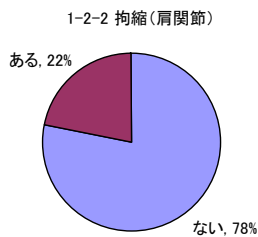
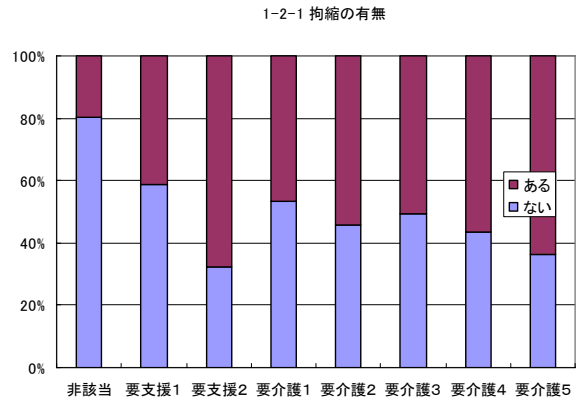
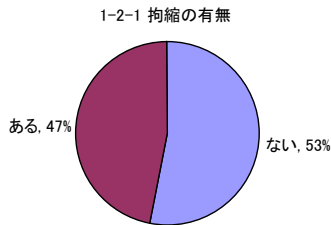
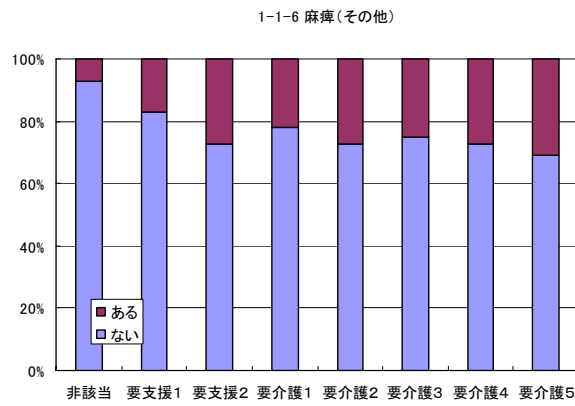
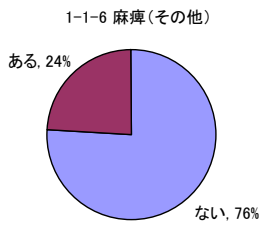
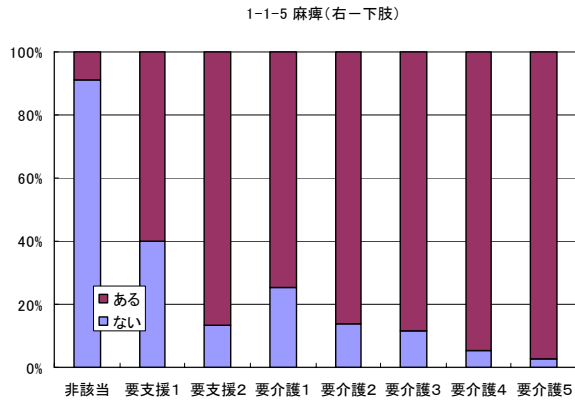
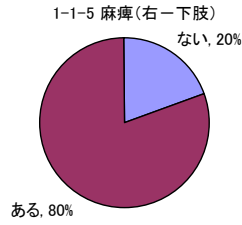


調査項目	選択肢	二次判定結果								合計	構成比
		非該当	要支援1	要支援2	要介護1	要介護2	要介護3	要介護4	要介護5		
① 会話 (11-3-16)	1. ない	358	5,005	5,880	4,207	2,965	2,018	1,098	799	22,330	68.26%
	2. まれにある	6	244	408	785	614	420	202	74	2,753	8.42%
	3. ときどきある	4	139	257	766	773	590	423	161	3,113	9.52%
	4. よくある	5	103	120	805	834	1,070	895	685	4,517	13.81%
② 買い物 (12-6)	1. できる	343	4,528	4,358	2,408	1,050	438	158	30	13,313	40.70%
	2. 見守り	6	340	661	1,170	638	283	87	15	3,200	9.78%
	3. 一部介助	12	447	1,034	1,769	1,670	1,081	441	100	6,554	20.03%
	4. 全介助	12	176	612	1,216	1,828	2,296	1,932	1,574	9,646	29.49%
③ 調理 (13-1)	1. できる	326	3,938	3,377	1,627	527	170	58	19	10,042	30.70%
	2. 見守り	8	333	445	730	280	107	21	2	1,926	5.89%
	3. 一部介助	25	794	1,579	1,983	1,357	621	169	30	6,558	20.05%
	4. 全介助	14	426	1,264	2,223	3,022	3,200	2,370	1,668	14,187	43.37%
④ 自分勝手 (14-9)	1. ない	349	5,029	5,830	4,306	3,157	2,250	1,449	1,224	23,594	72.12%
	2. まれにある	10	204	363	639	496	287	159	55	2,213	6.76%
	3. ときどきある	7	161	283	719	595	510	279	76	2,630	8.04%
	4. よくある	7	97	189	899	938	1,051	731	364	4,276	13.07%
⑤ 独り言等 (14-25)	1. ない	362	5,308	6,373	5,720	4,285	3,136	1,838	1,206	28,228	86.29%
	2. まれにある	8	82	129	262	229	185	143	66	1,104	3.37%
	3. ときどきある	2	52	74	248	282	265	209	120	1,252	3.83%
	4. よくある	1	49	89	333	390	512	428	327	2,129	6.51%
⑥ 集団参加 (14-26)	1. ない	308	4,265	4,871	4,177	3,151	2,361	1,364	881	21,378	65.35%
	2. まれにある	15	304	348	496	376	279	153	47	2,018	6.17%
	3. ときどきある	16	256	372	535	421	383	219	74	2,276	6.96%
	4. よくある	34	666	1,074	1,355	1,238	1,075	882	717	7,041	21.52%
計		373	5,491	6,665	6,563	5,186	4,098	2,618	1,719	32,713	
構成比		1.14%	16.79%	20.37%	20.06%	15.85%	12.53%	8.00%	5.25%		100.00%

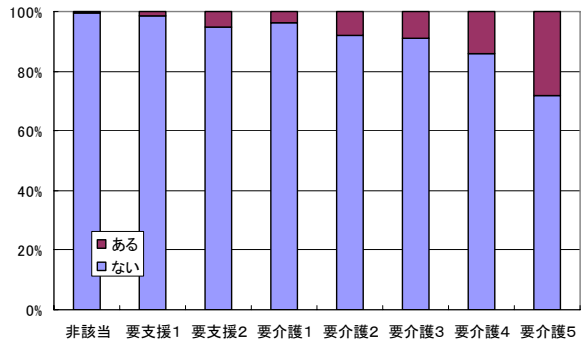
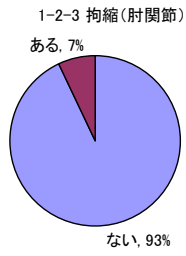


○モデル一次調査結果 ※2次判定が確定している 32,713 件の集計結果

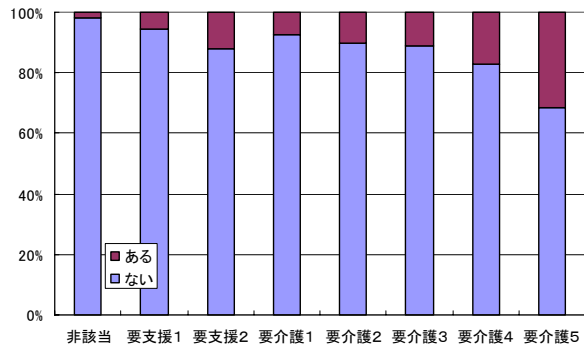
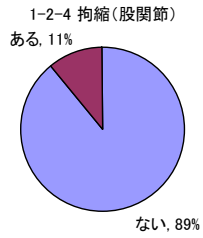




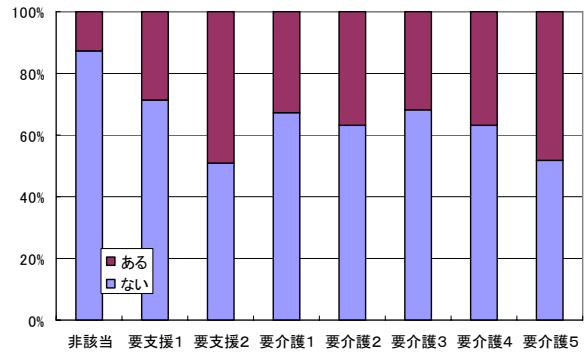
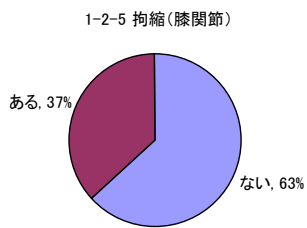
1-2-3 拘縮(肘関節)



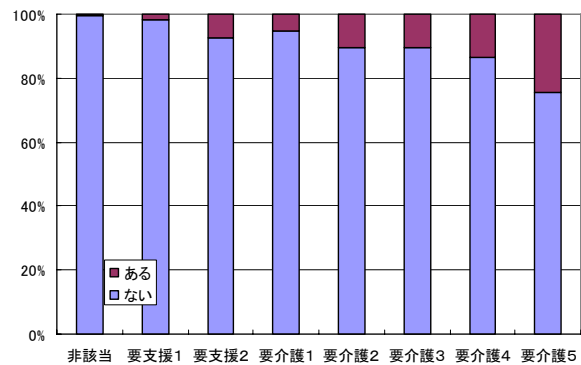
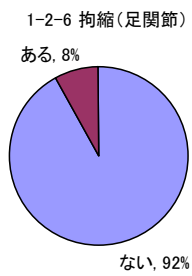
1-2-4 拘縮(股関節)

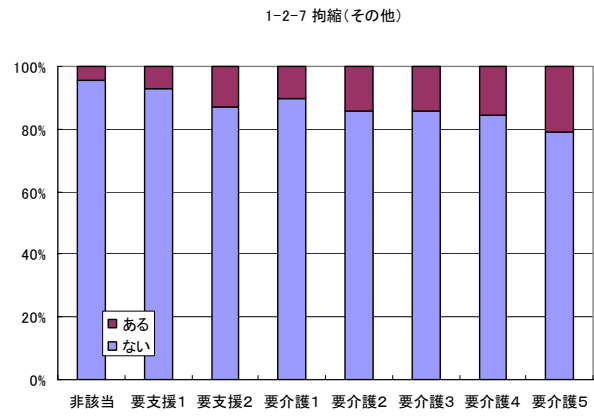
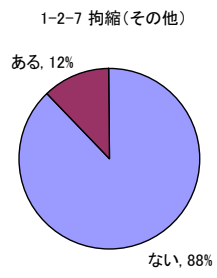


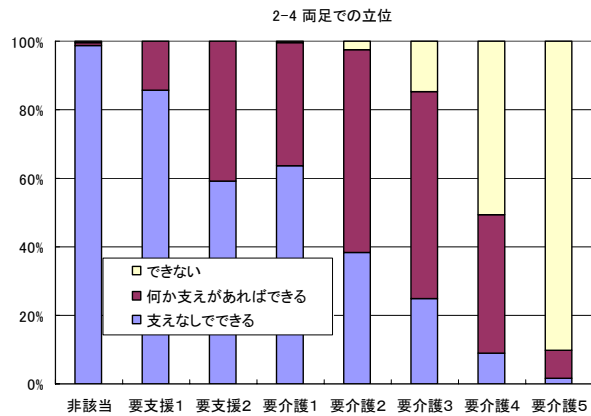
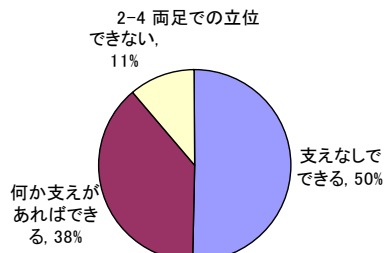
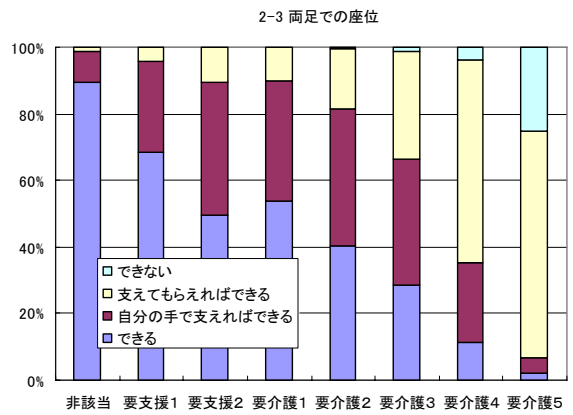
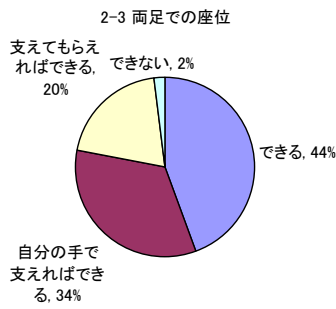
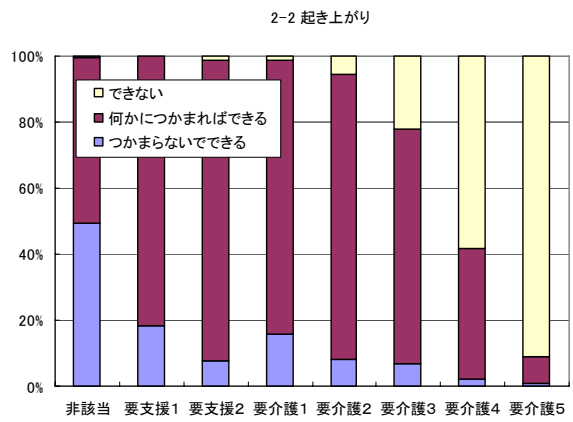
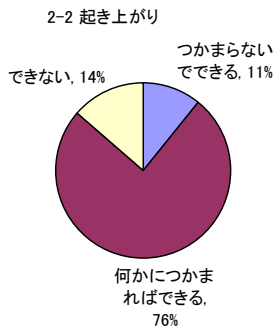
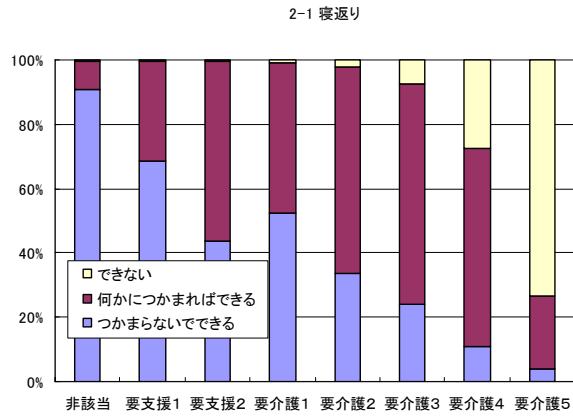
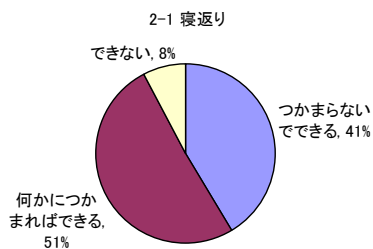
1-2-5 拘縮(膝関節)

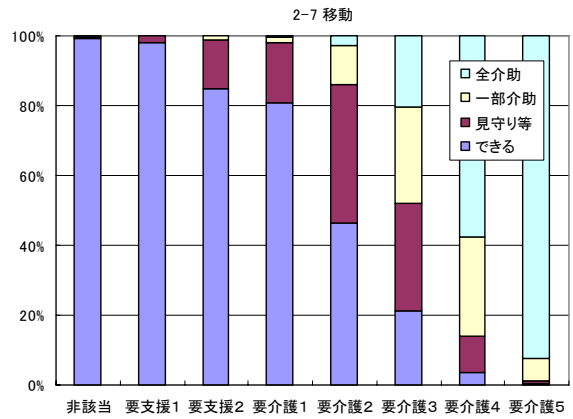
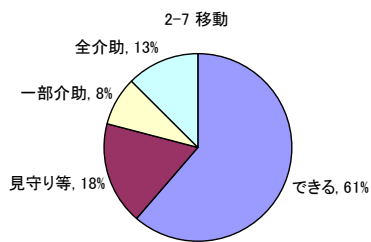
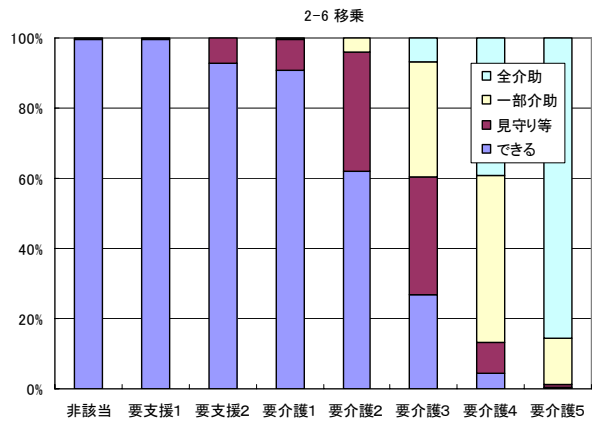
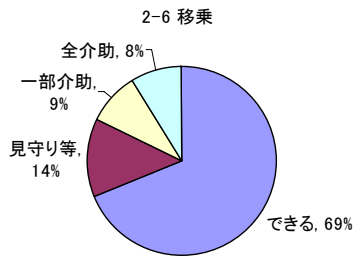
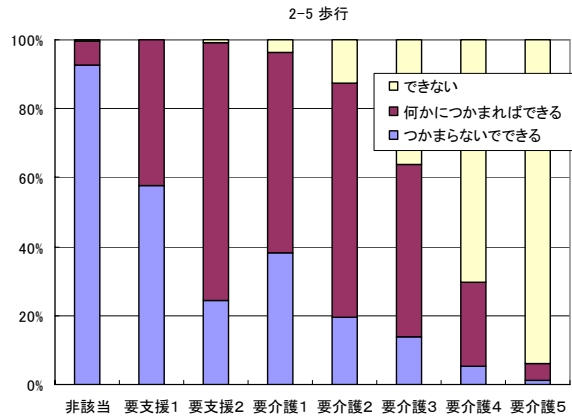
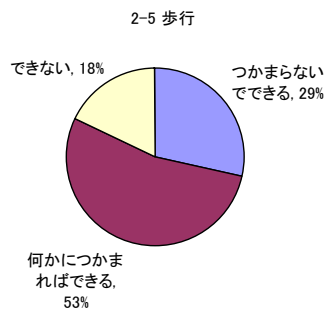


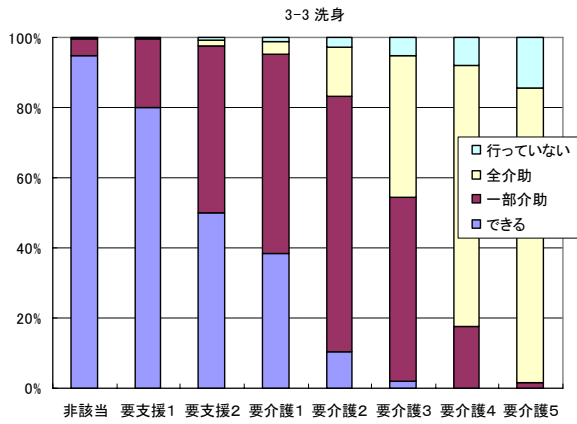
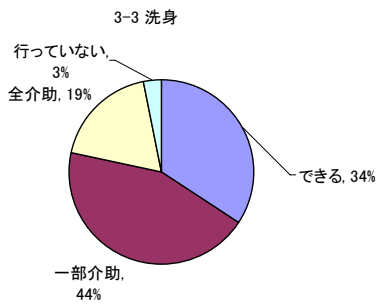
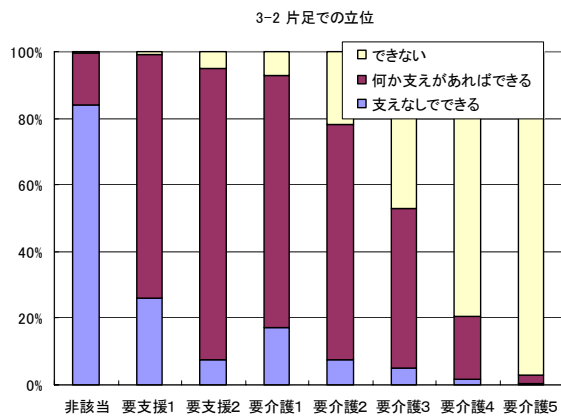
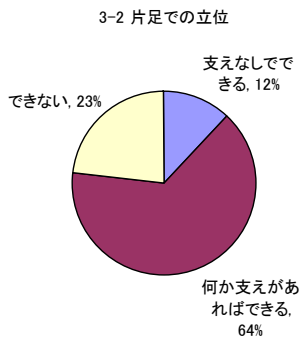
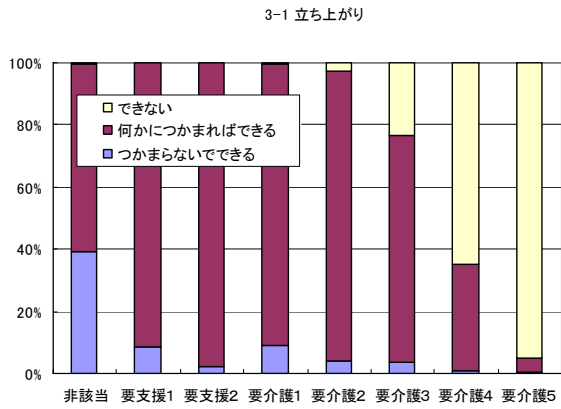
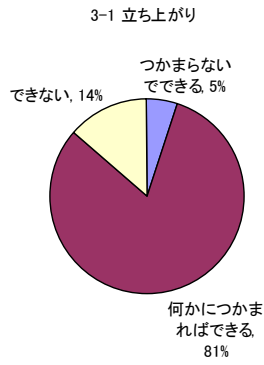
1-2-6 拘縮(足関節)

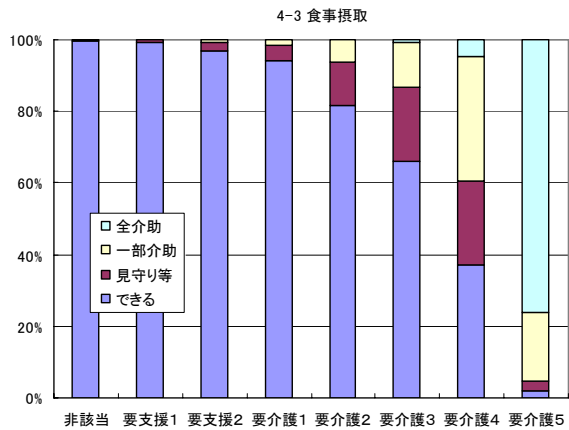
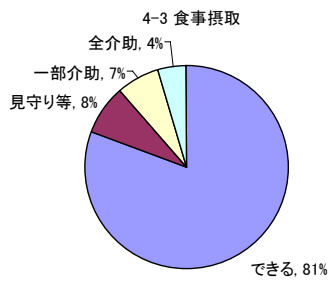
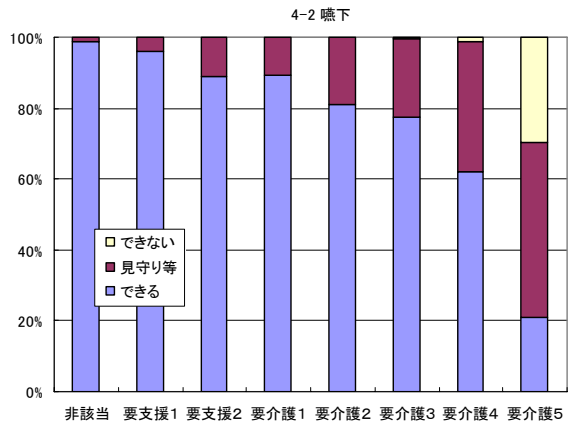
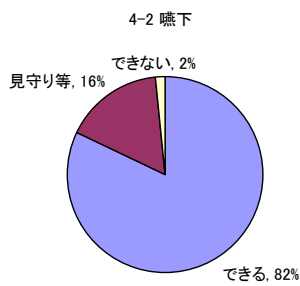
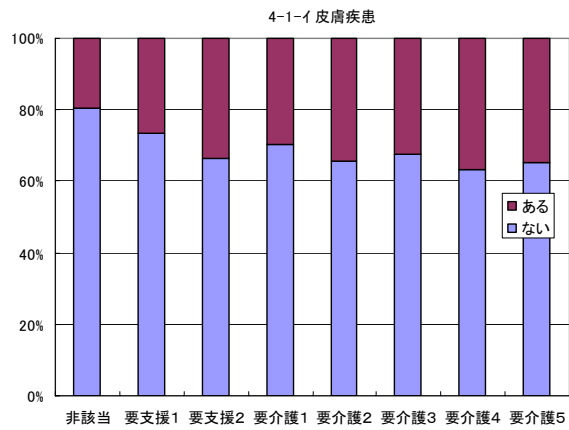
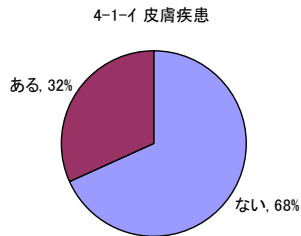
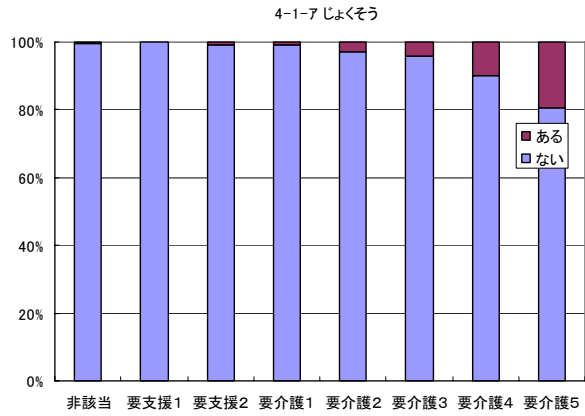
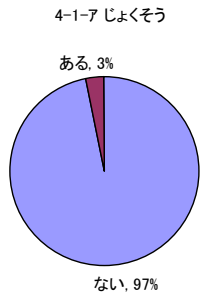


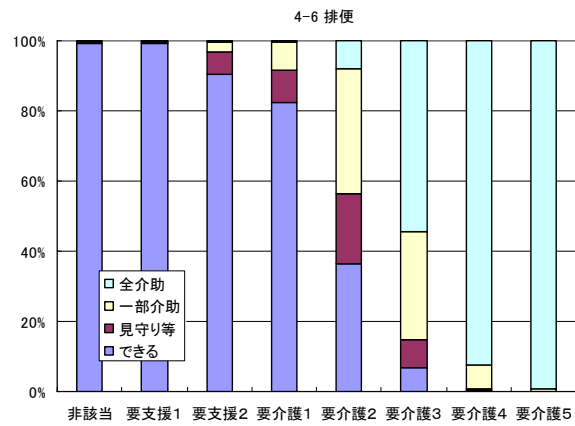
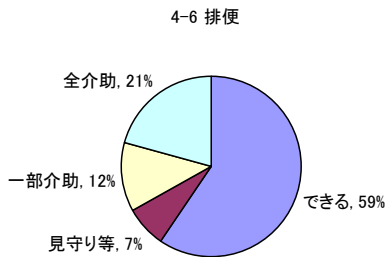
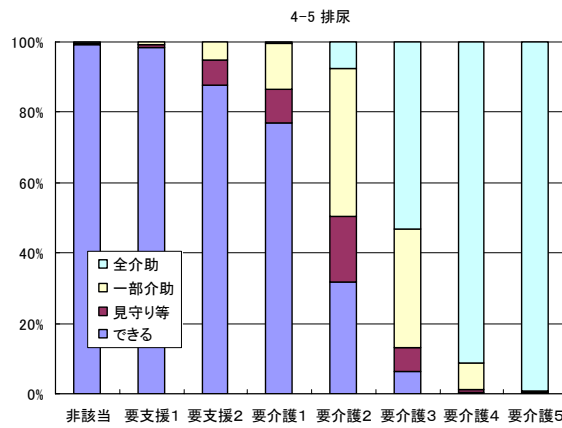
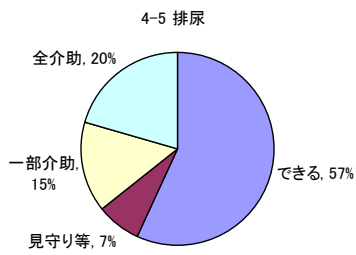
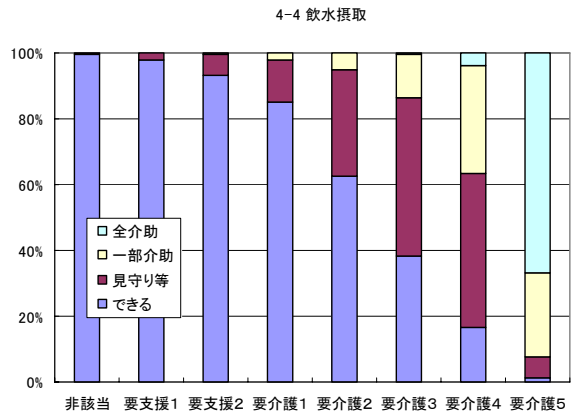
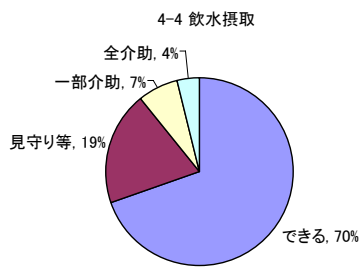


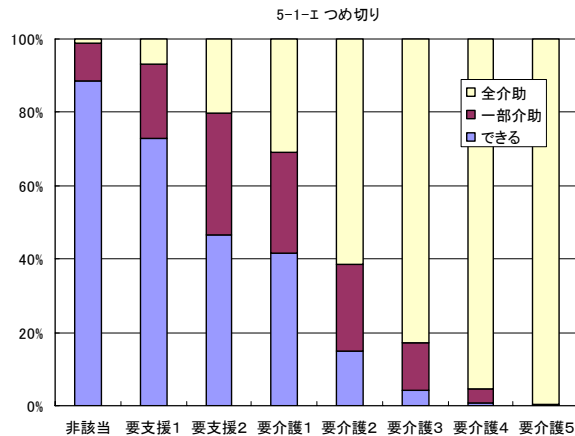
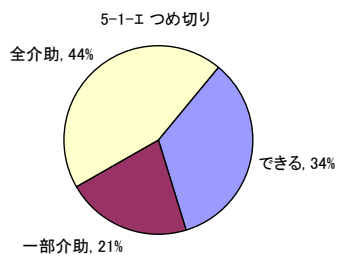
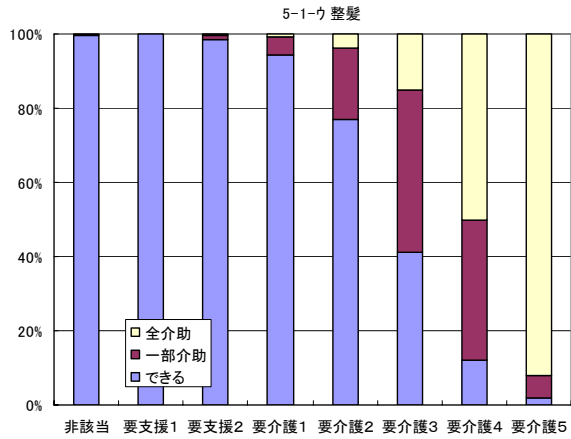
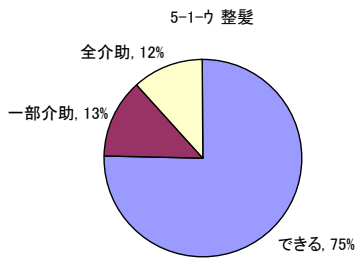
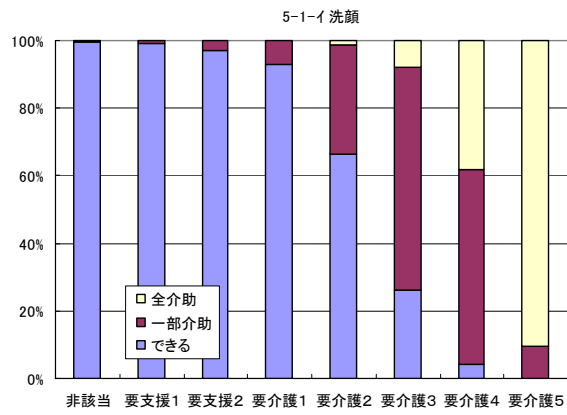
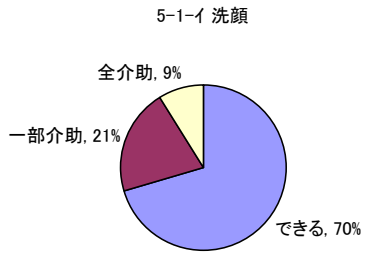
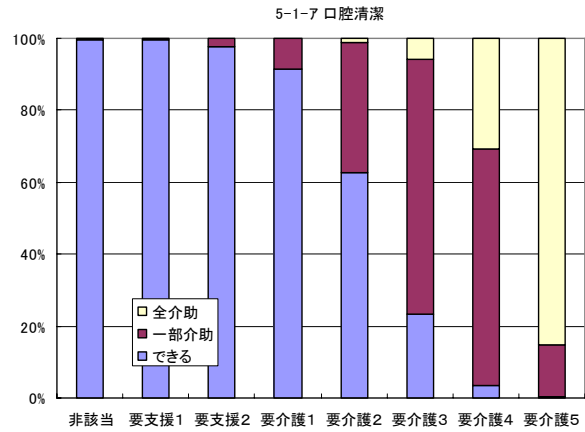
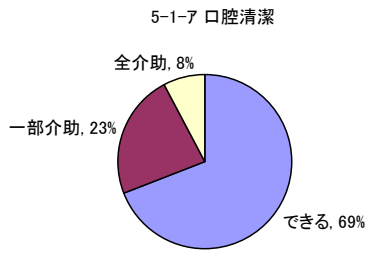


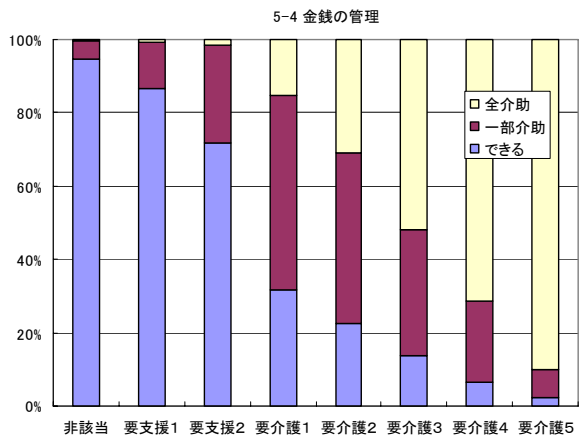
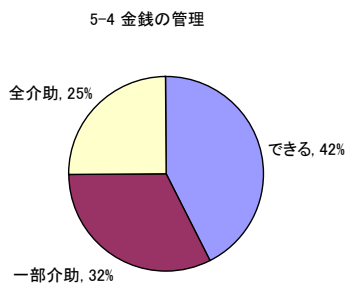
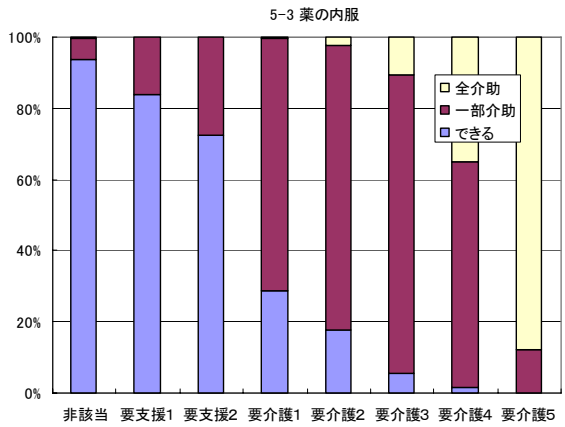
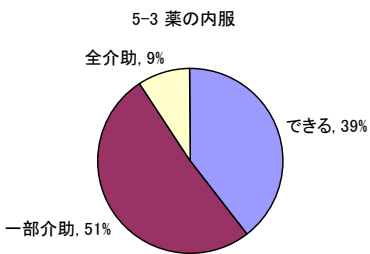
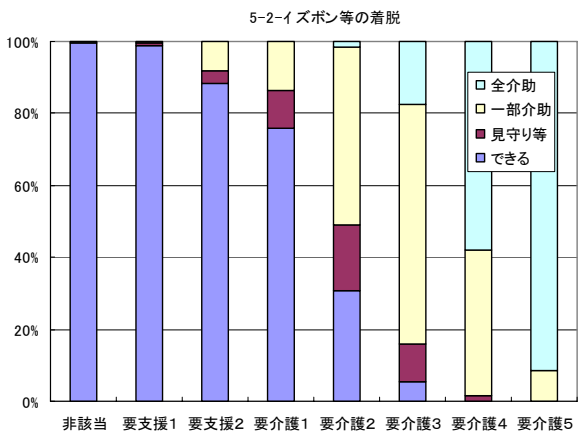
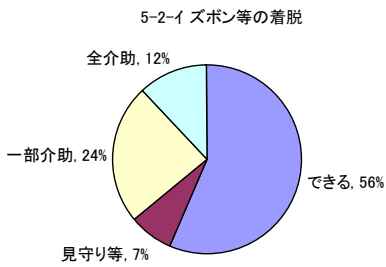
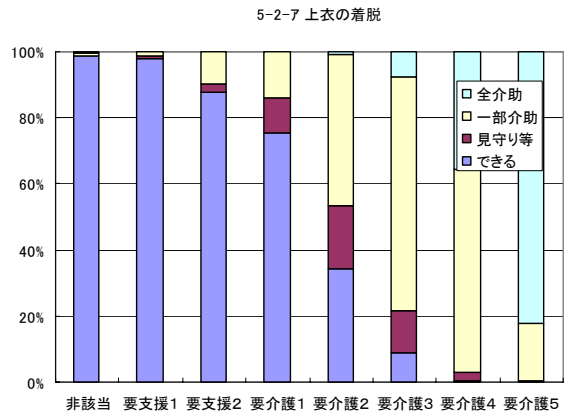
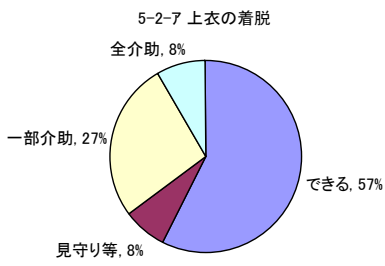


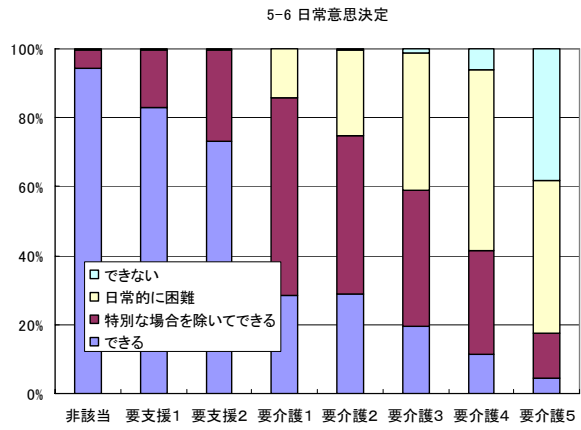
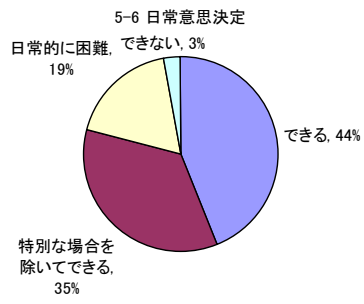
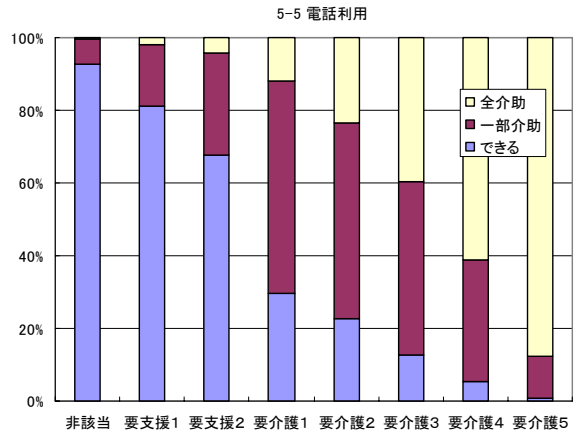
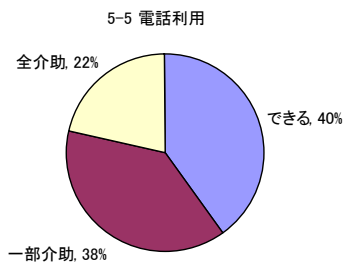


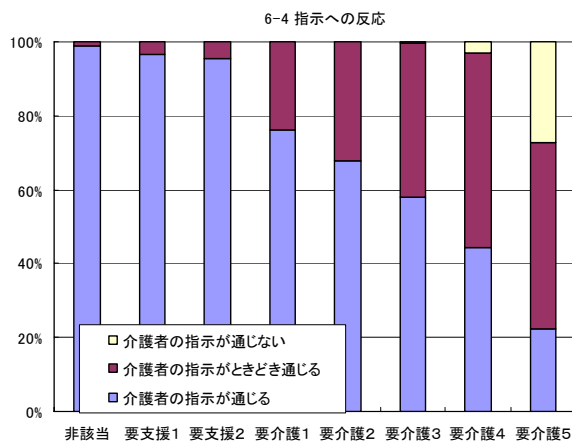
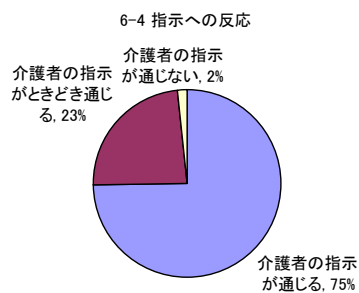
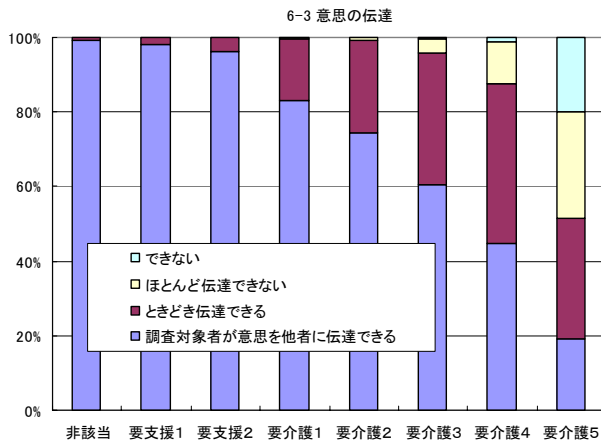
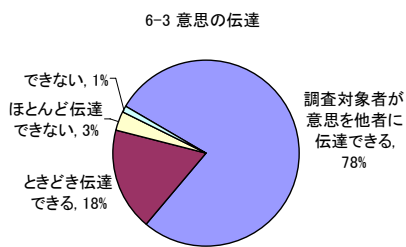
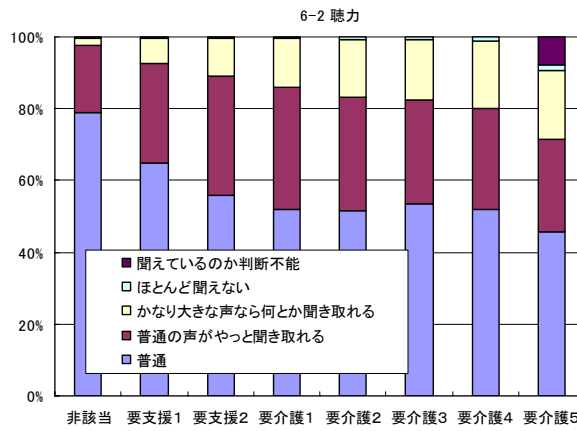
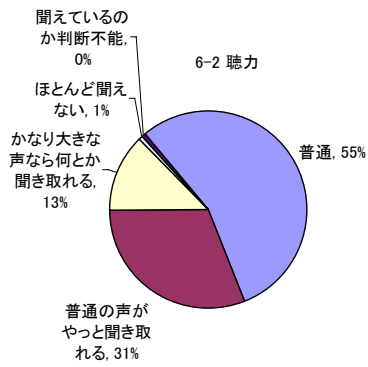
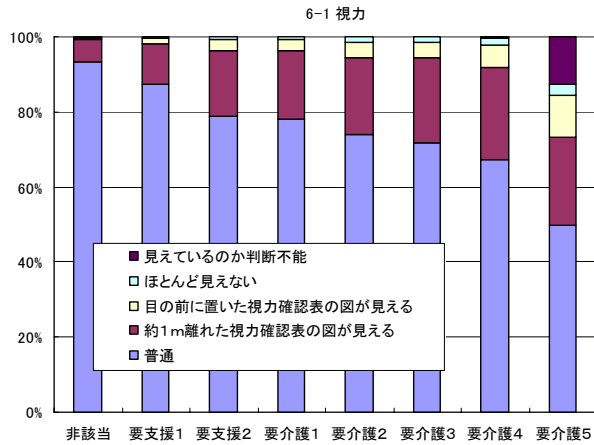
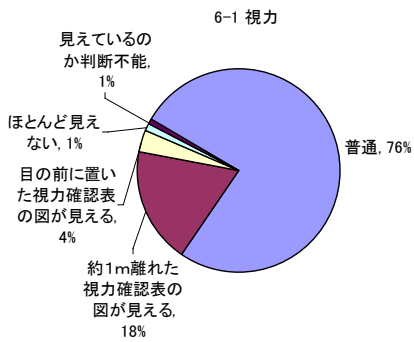


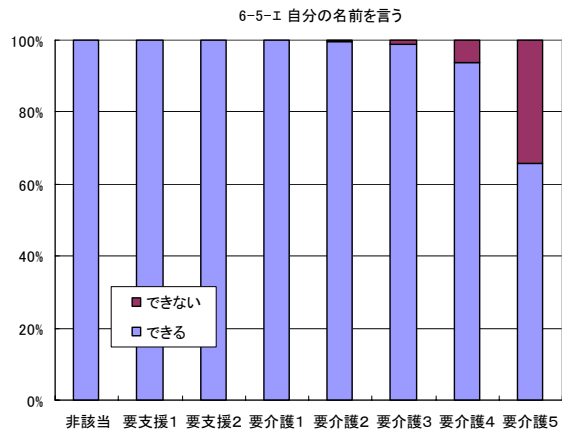
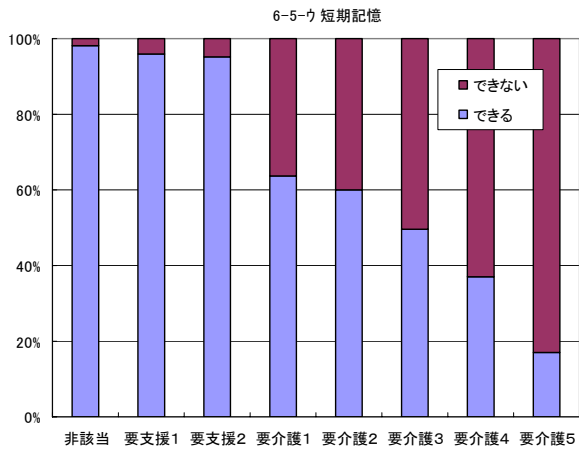
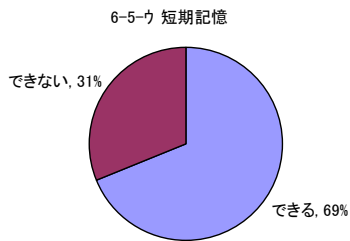
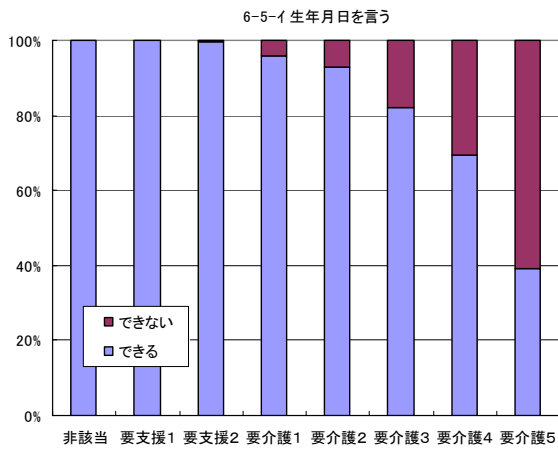
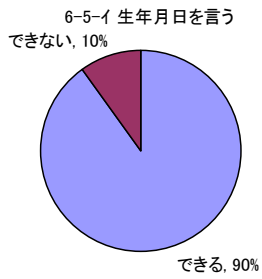
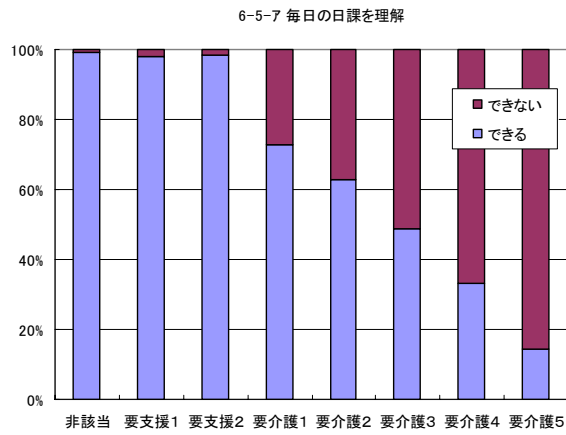
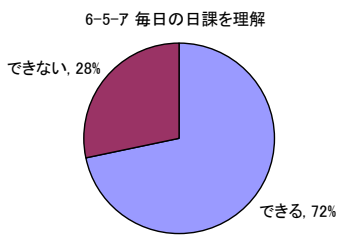


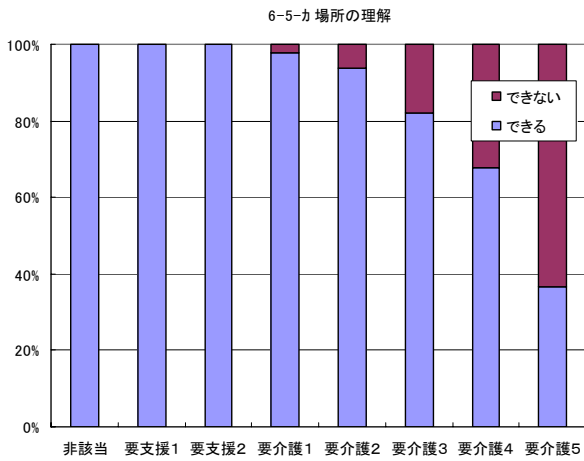
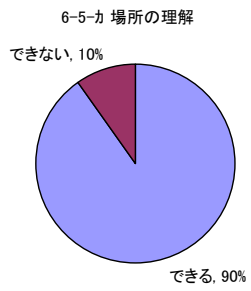
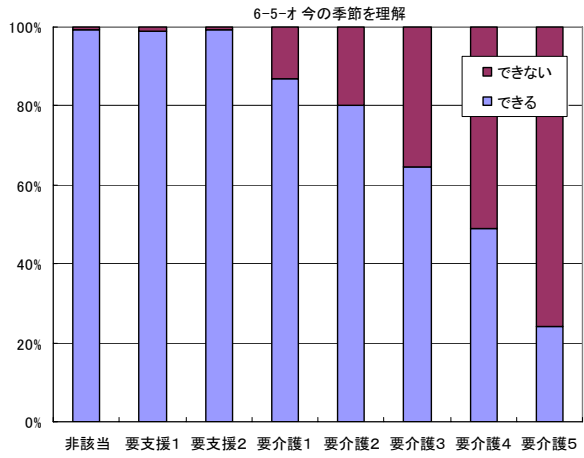
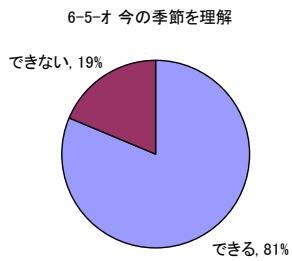


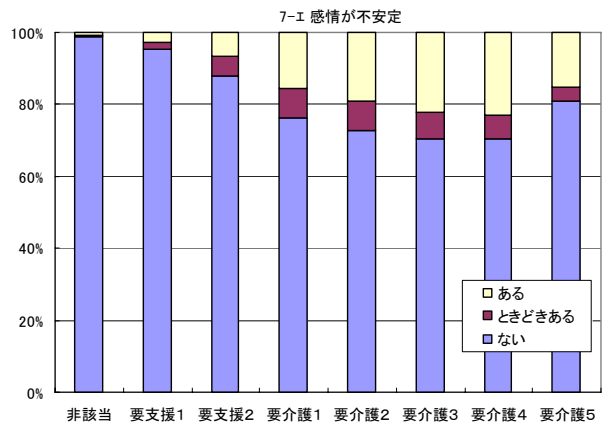
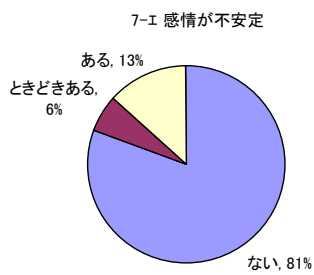
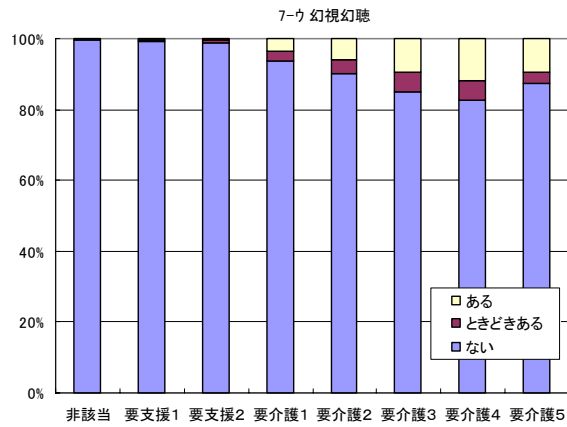
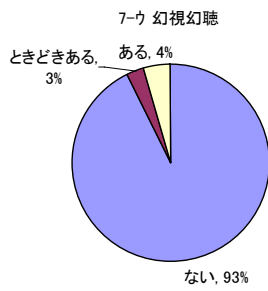
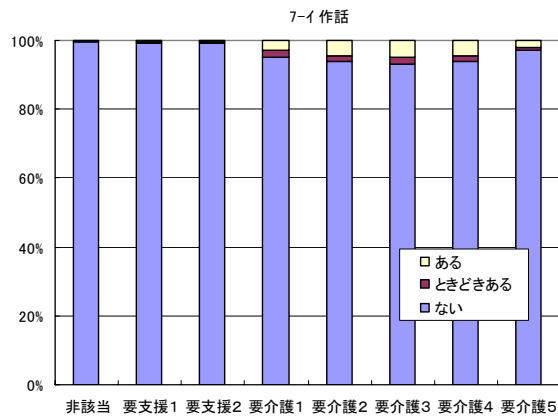
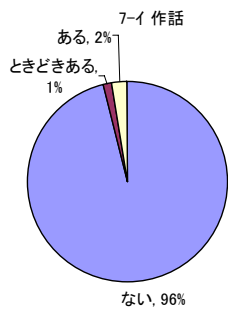
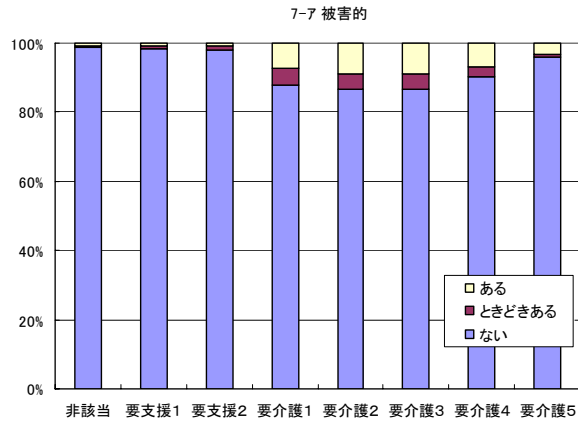
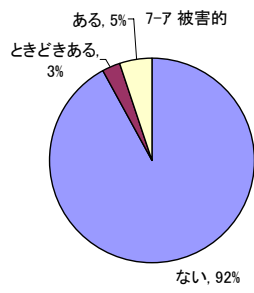


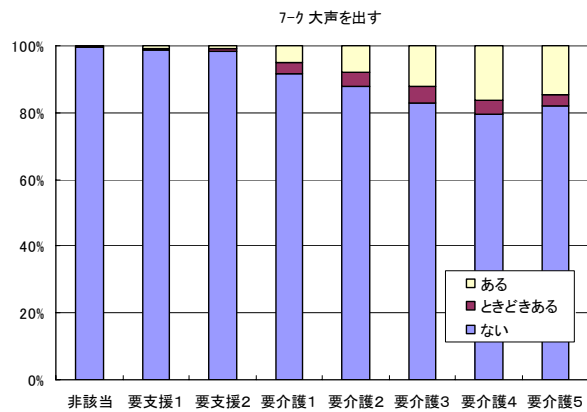
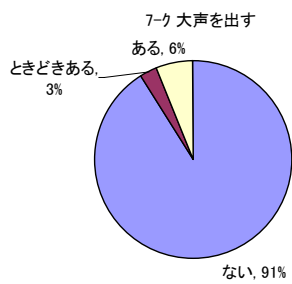
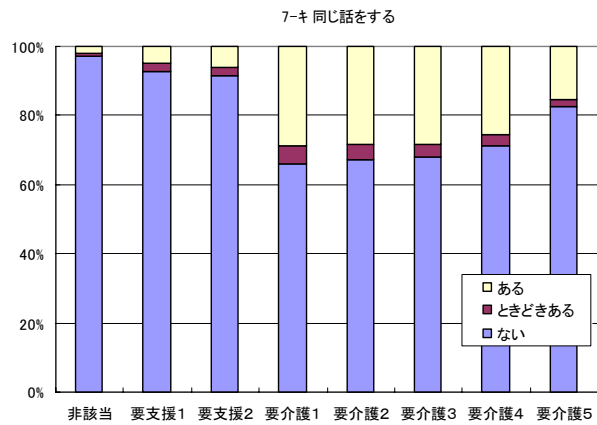
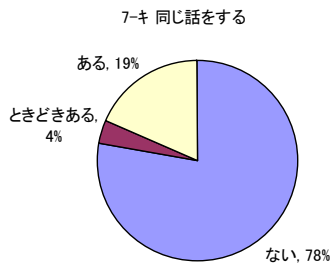
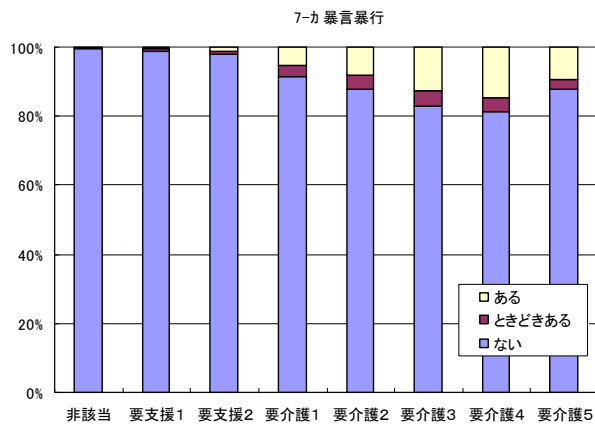
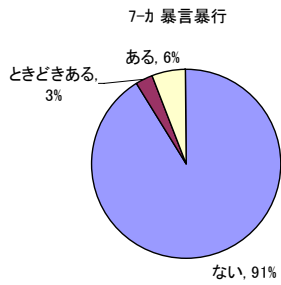
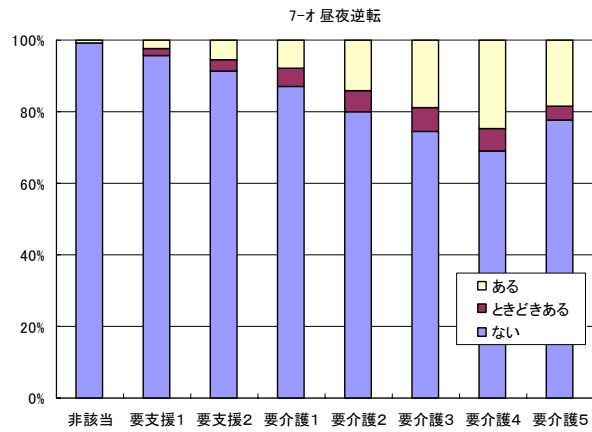
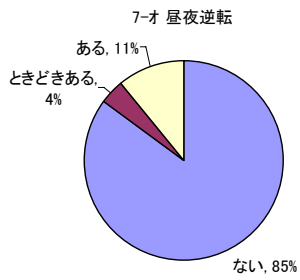


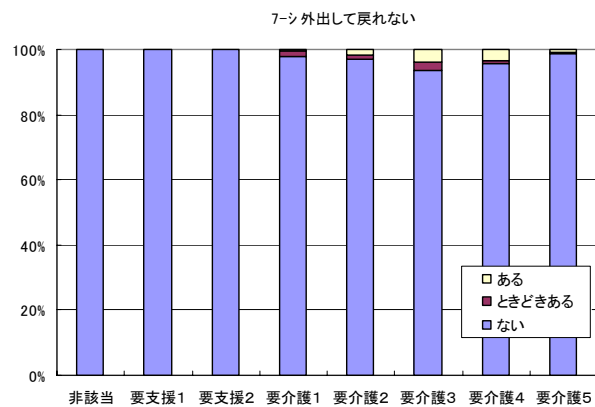
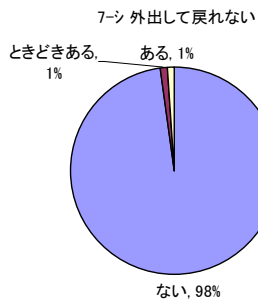
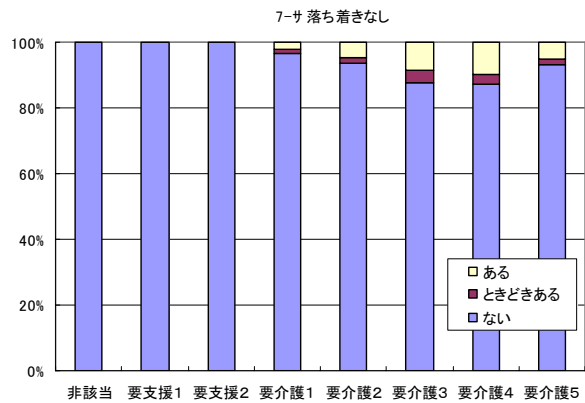
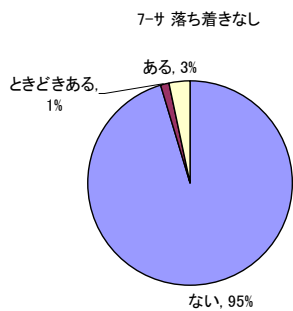
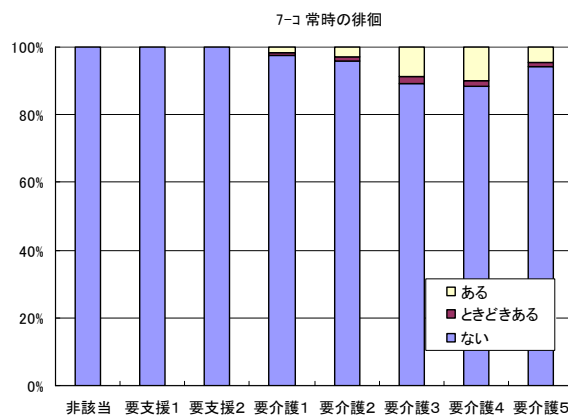
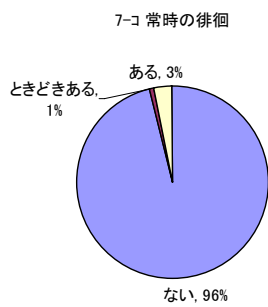
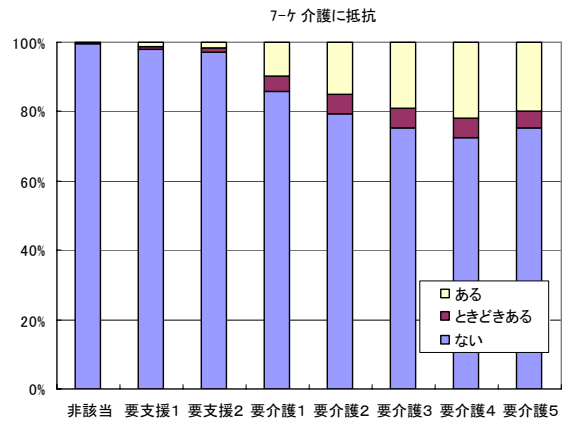
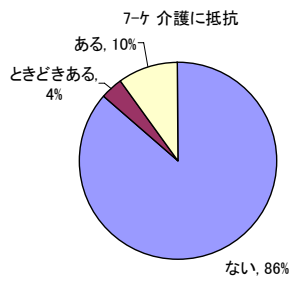


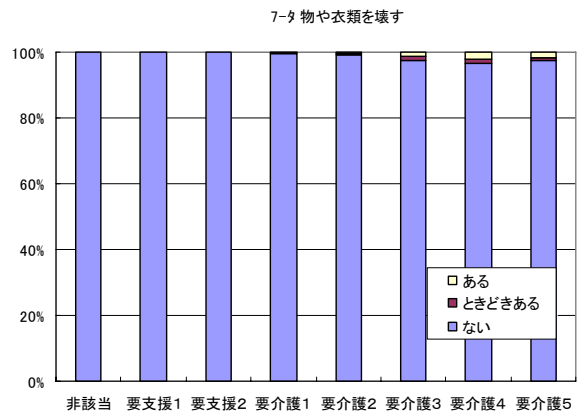
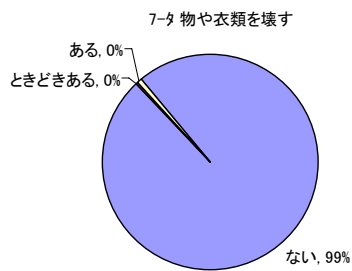
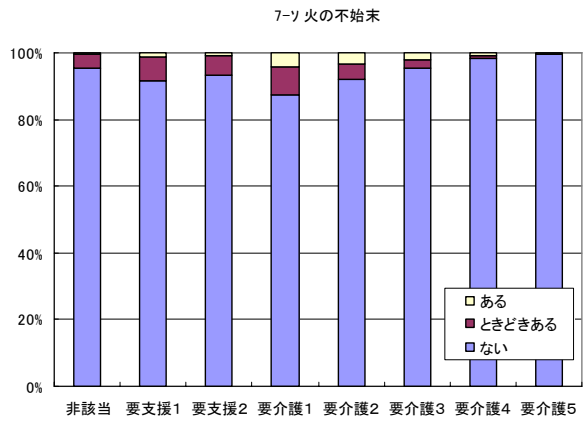
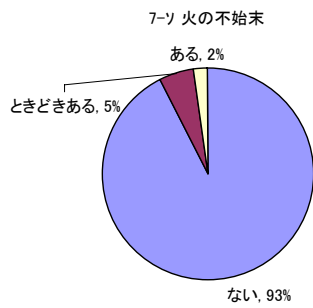
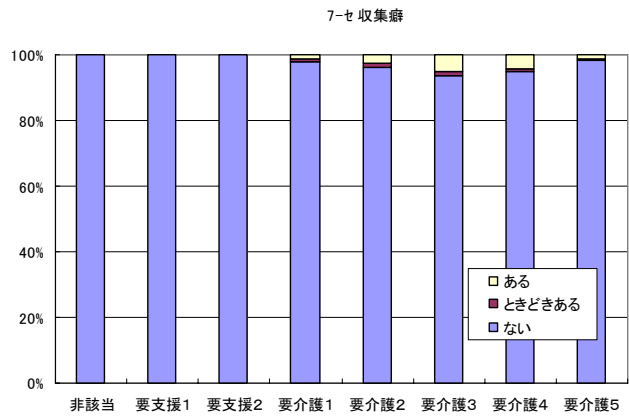
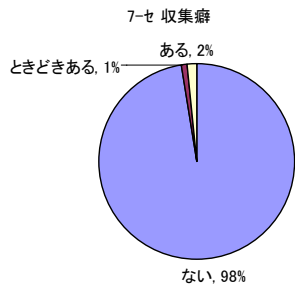
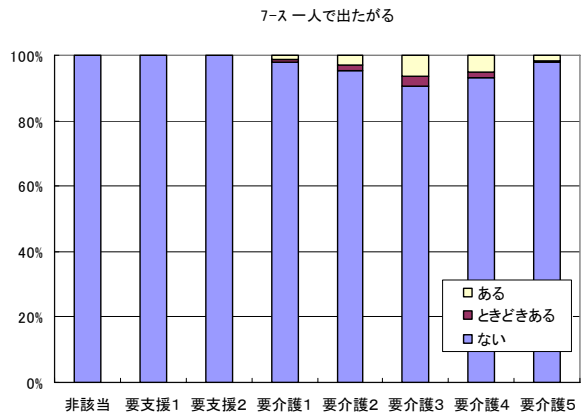
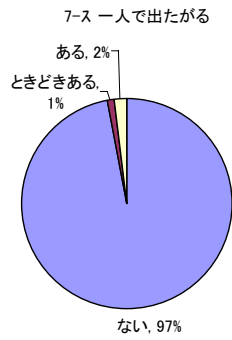


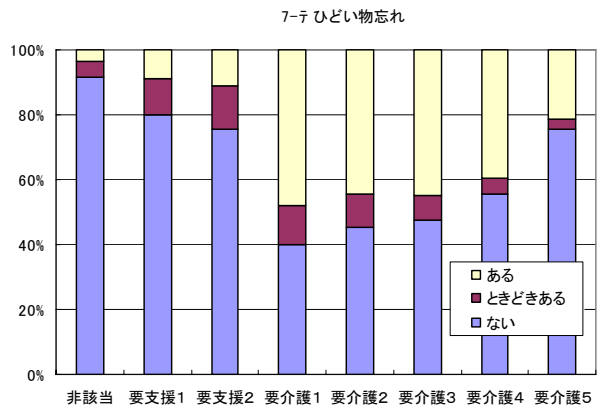
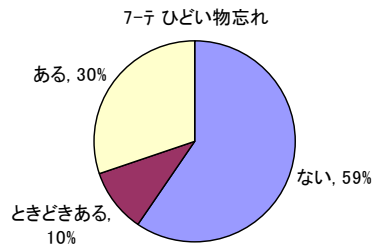
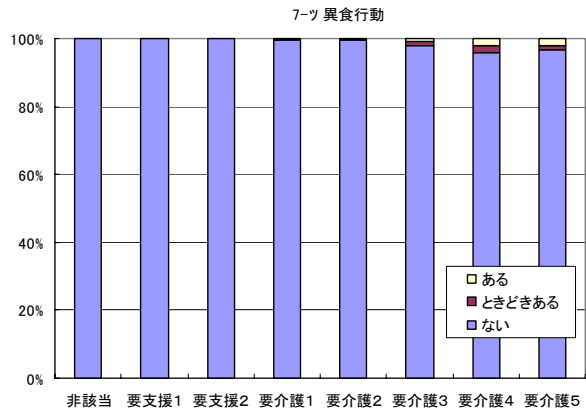
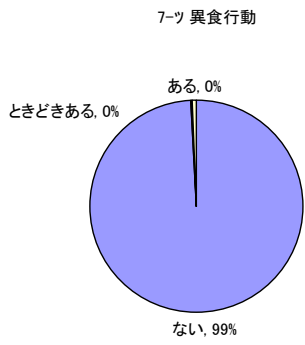
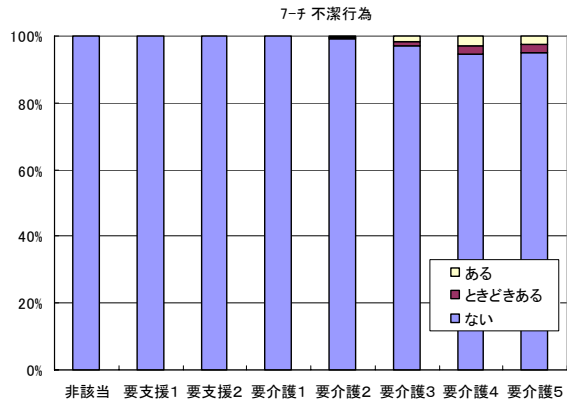
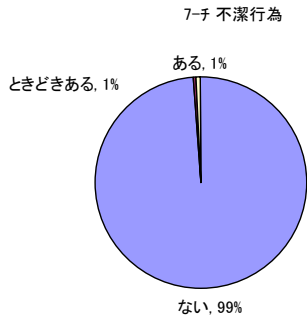


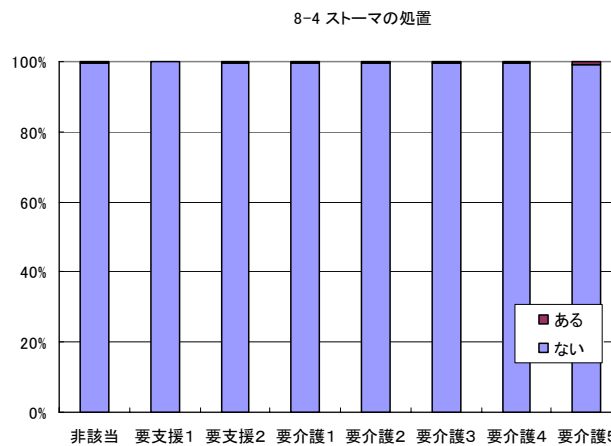
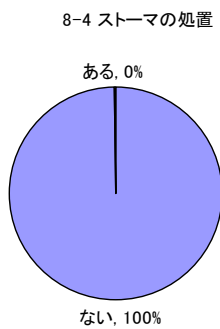
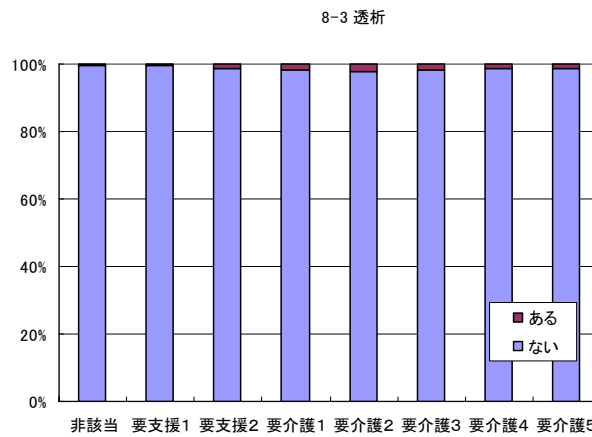
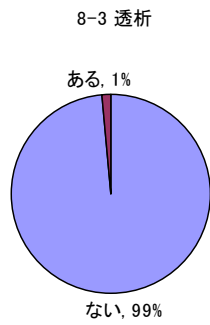
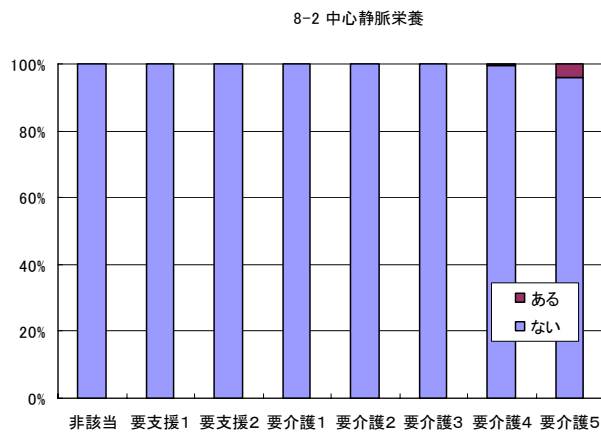
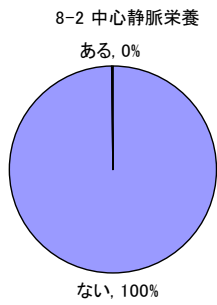
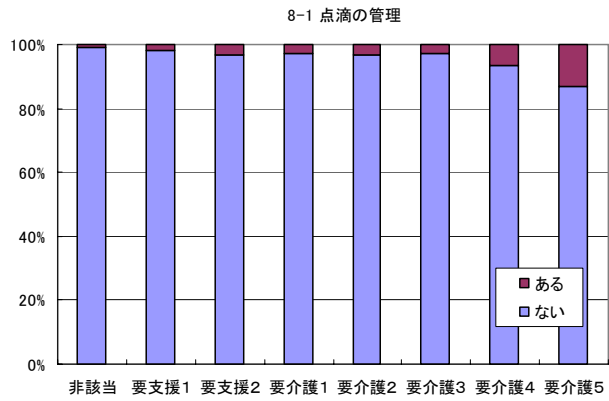
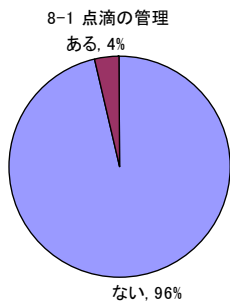




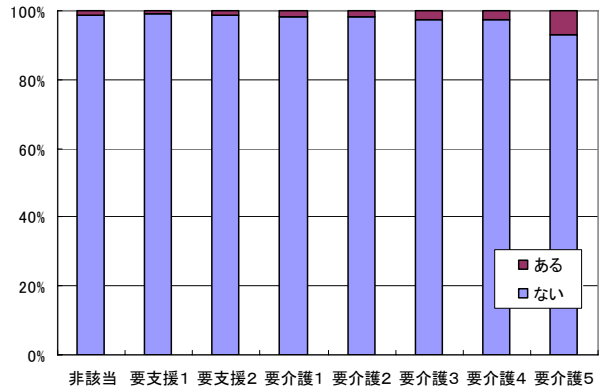
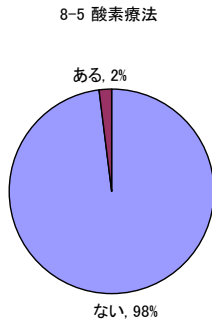




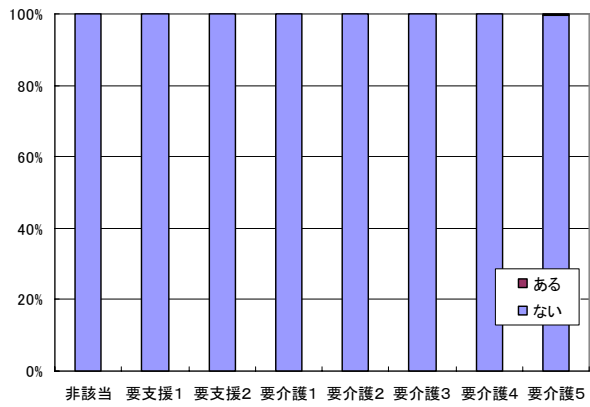
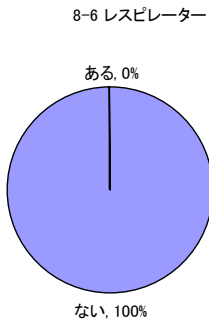




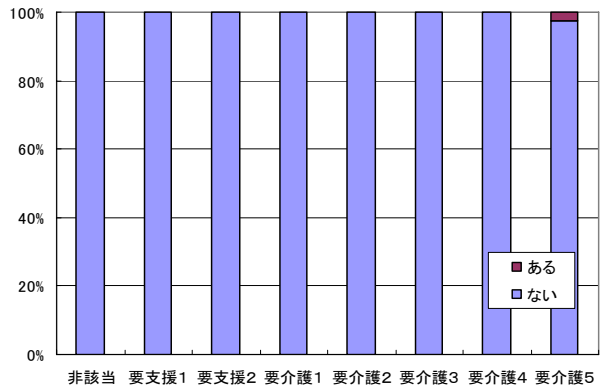
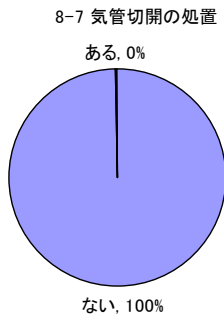
8-5 酸素療法



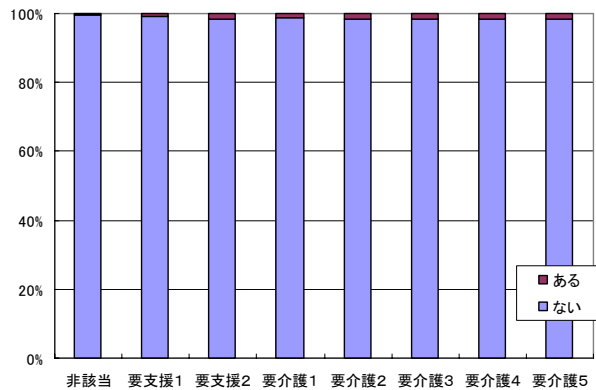
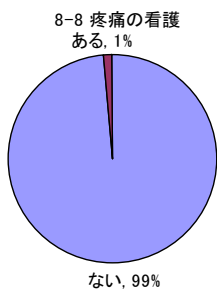
8-6 レスピレーター

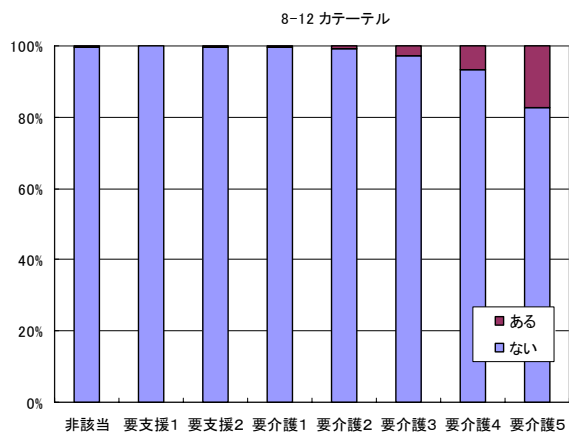
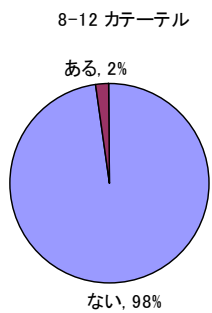
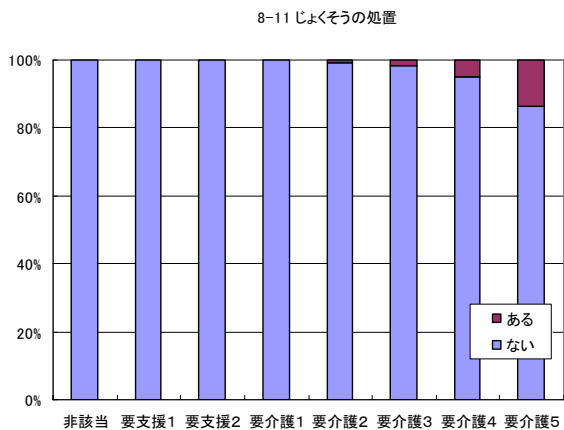
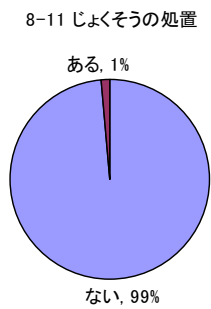
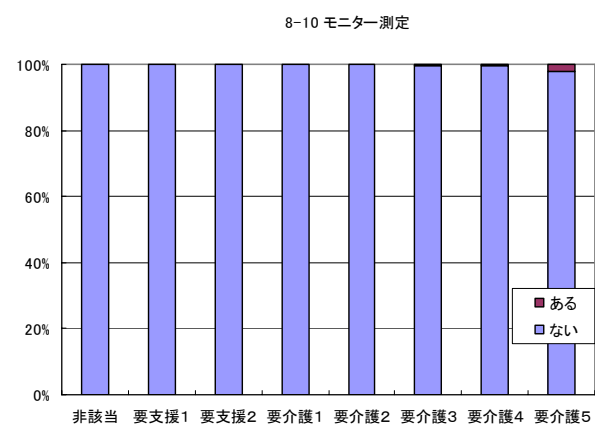
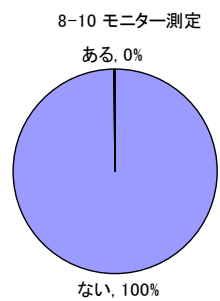
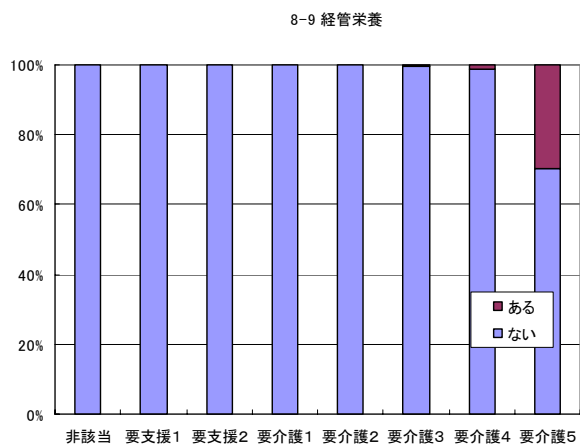
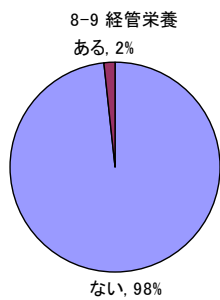


8-7 気管切開の処置

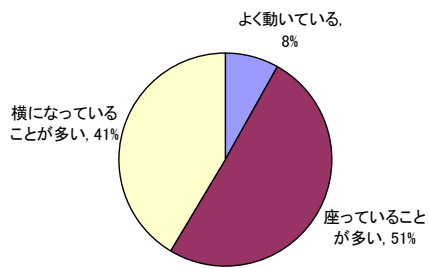


8-8 疼痛の看護

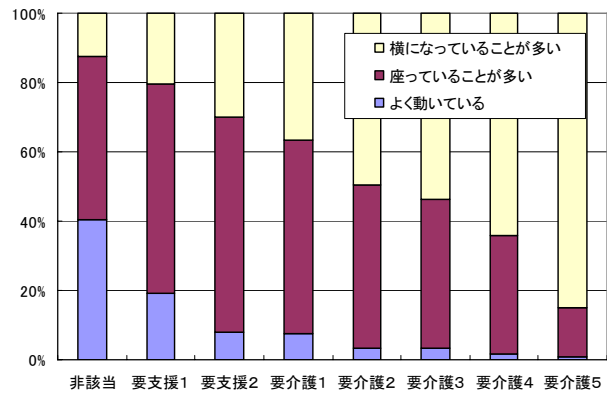




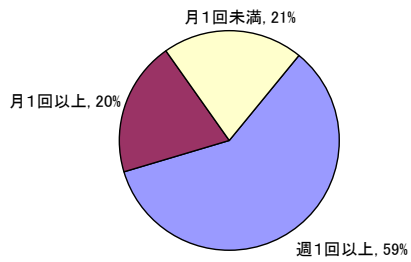
10-1 日中の生活



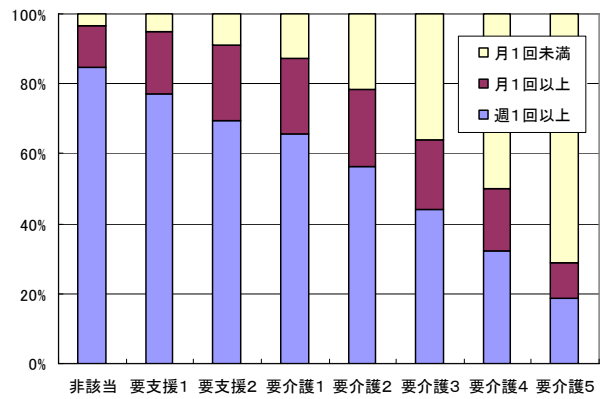
10-1 日中の生活



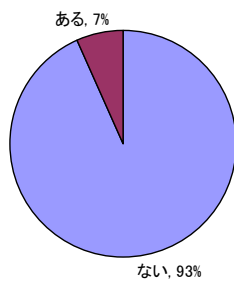
10-2 外出頻度



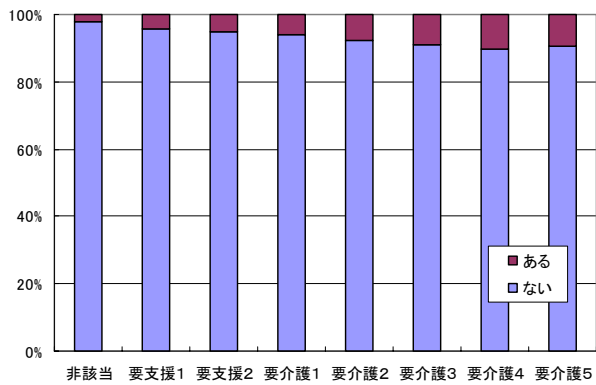
10-2 外出頻度

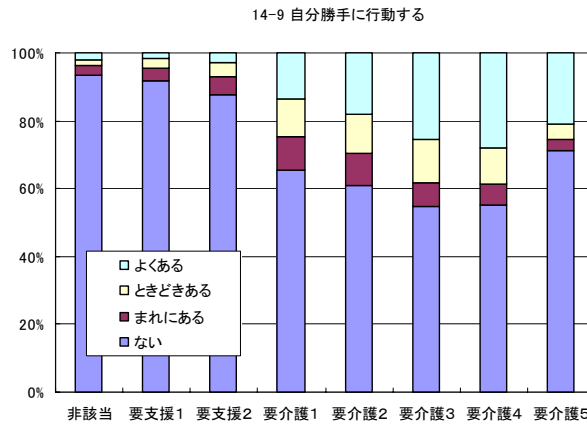
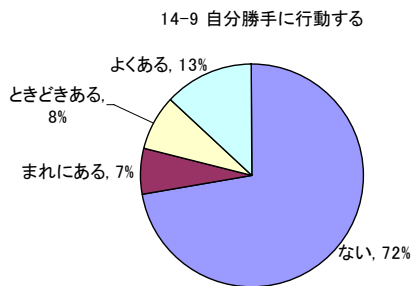
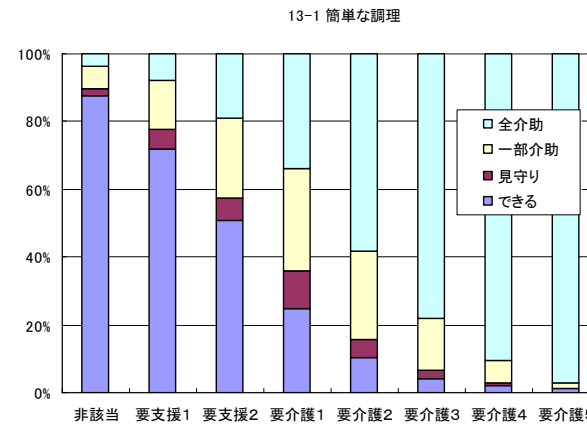
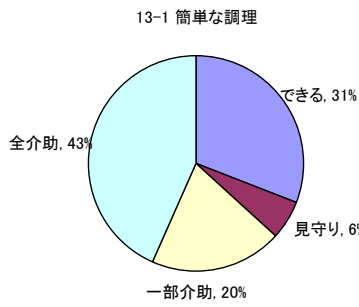
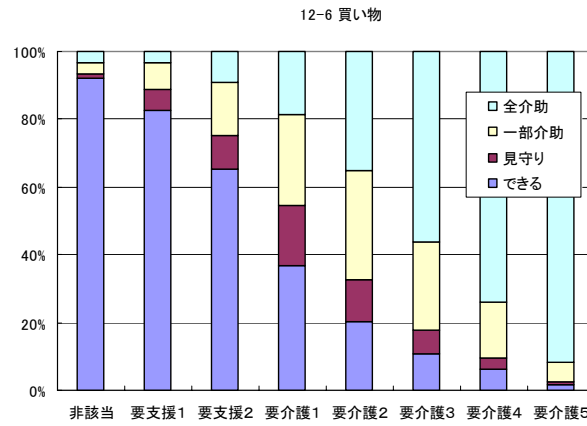
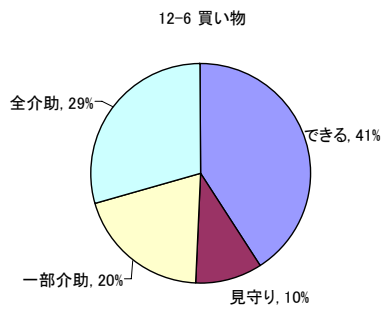
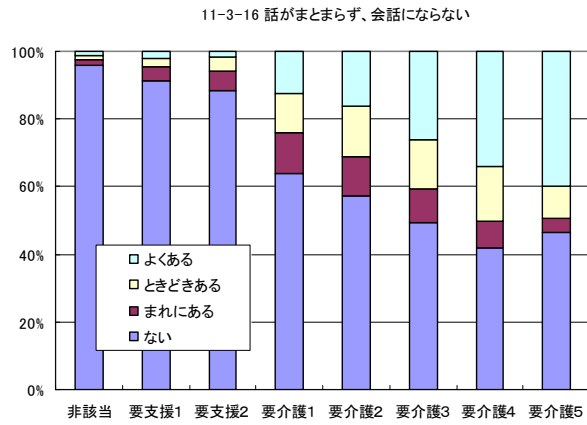
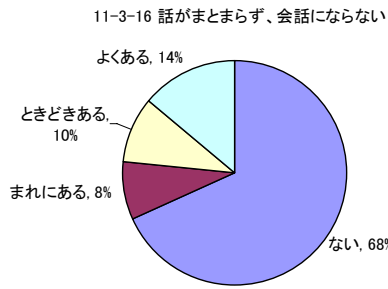


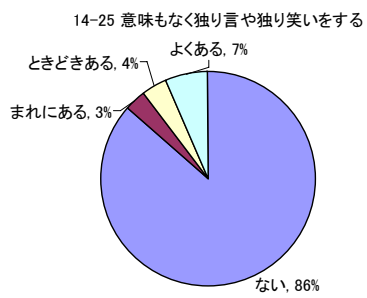
10-3 環境等の変化



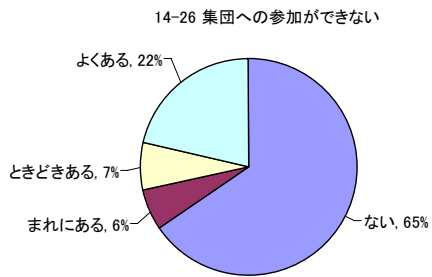
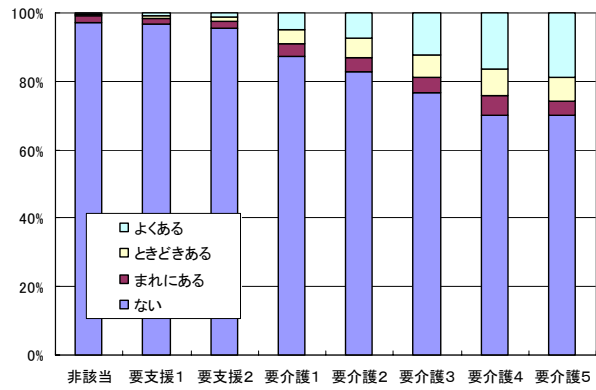
10-3 環境等の変化







14-25 意味もなく独り言や独り笑いをする



14-26 集団への参加ができない

