

Production of ICD-11:

The overall revision process

T. Bedirhan Üstün MD
 Robert Jakob MD
 Can Çelik
 Pierre Lewalle
 Nenand Kostanjsek

WHO
 WHO
 WHO
 WHO
 WHO

Mea Renahan
 Richard Madden PhD
 Marjorie Greenberg

Update Revision Committee Chair
 Family Development Committee Chair
 Planning Committee Chair

Chris Chute MD
 Martti Virtanen MD

Revision Steering Committee Chair
 Classification - Terminology Link

Steve Hyman MD
 James Harrison MD
 Segolene Ayme MD
 Kentaro Sugano MD

Mental Health Advisory Group Chair
 External Causes & Injury Advisory Group Chair
 Rare Diseases Advisory Group Chair
 Internal Medicine Advisory Group Chair

On behalf of WHOFIC Network

Summary:

This paper describes the overall process for producing the 11th revision of the International Classification of Diseases (ICD).

A coordinated series of methods will be utilized to revise the current ICD-10 to arrive at a new generation of classification. The ICD-11 revision will proceed in three stages: (1) systematic review of scientific, clinical and public health evidence relevant to classification, (2) creation of a draft ICD-11 and field-testing it (3) development of meaningful linkages to standardized health care terminologies to facilitate communication, standardized data processing and research. The traditional form and uses of the ICD for mortality and morbidity reporting will be maintained. To assist additional needs different users the revised classification will have in three interoperable formats for primary care, clinical specialty care various knowledge domains such as constellation of signs and symptoms, severity and course, and research. To represent knowledge adequately the classification will be built using ontological tools that include various domains such as constellations of signs and symptoms, severity and course, as well as genetic and other information. This ontological approach will also enable standardized information processing by computers in e-health applications. Material from other WHO classifications, notably the International Classification Functioning Disability and Health (ICF) and national modifications of ICD will be included to improve the ICD content and to improve alignment between the classifications. The revision process will make use of distributed web-based tools such as a structured open database platform to collate suggestions, discussions and evidence. Secondly, and a structured Wiki-like tool will be used to generate the successive drafts of ICD-11. Users will engage in field trials through the global web based platform. This internet based knowledge management and sharing process will allow broader participation of multiple stakeholders in the creation and review of the new classification.

A review and coordination mechanism will be built in order to evaluate the progress of the revision process to ensure that it is proceeding in desired directions. Currently a Revision Steering Group has been established as an oversight mechanism. Each main area of revision will be worked through a topic advisory group and multiple workgroups. Following this roadmap we expect to arrive at a desired product that not only serves as a classification system but also as a building block for health information systems.

Keywords: ICD, Classifications, Terminology, Health Information Systems, International Health.

1. Background

The International Classification of Diseases (ICD) provides a public global standard to organize and classify information about diseases and related health problems. ICD is a member of the World Health Organization's "Family" of International Classifications (WHO-FIC) which provide the basic building blocks for health information systems. The overall function of the WHO Classifications is to capture data at various service delivery points in a manner that is interoperable across systems and countries using a suite of integrated standard tools. In this way, meaningful communication and exchange in the health sector is possible globally across the health sector.

To keep the scientific currency and public health utility of the classifications, ICD is scheduled for 10 yearly periodic revisions and annual updates in line with the recommendations of the governing bodies of the WHO¹. The latest revision, ICD-10, was adopted by the World Health Assembly in 1990.

An update and revision process has been prepared by the WHO involving all stakeholders. The process is similar to "software release" in that it will maintain compatibility with previous versions, allow new functionalities and developments in modular structure, and will test the revision proposals before implementation. The main objectives of the ICD update and revision process are to create a user-friendly and scientifically credible classification utilizing modern knowledge management and sharing methods to synthesize scientific advances in the health and information fields in a continuous manner.

A common information infrastructure for the update and revision process has been created for all ICD chapters to link the supporting evidence to the classification; this infrastructure includes better knowledge and meta-data representation. Of course this infrastructure will yield a product no better than the scientific content provided within the various disciplines. Certain areas such as oncology, mental and addictive disorders, internal medicine, and external causes of injury have been identified by the WHO-FIC Network as main foci of the update and revision process. In each area of health care the health information will be systematically reviewed in three interconnected main lines: (1) a Scientific Stream, (2) a Clinical Stream, and (3) a Public Health Stream. This work will be carried out by a core team of WHO-FIC investigators along with a group of international collaborators and advisers utilizing a permanent Internet-based knowledge management and sharing portal.

¹ The resolution can be found at hyperlink: [WHA ICD Resolution \(WHA 43.24\)](#).

2. The specific aims of the Update and Revision Process:

The revision process will aim to create a platform for the ICD that will allow continuous improvement in terms of following three *streams of work*:

1. Scientific Evidence: ICD should reflect the advances in medicine and all health sciences. The scientific understanding of the underlying process should guide the classification and representation of knowledge in the classification.
2. Clinical Utility and health system utility: ICD should be easy to use, support clinical decisions and health system management and should be readily integrated into routine practice in different settings including primary care, more specialized clinical care and research. Accordingly it may have different but compatible versions that can be used interchangeably in different levels of health care.
3. Public Health Usefulness: ICD should assist in public health policy, resource allocation and monitoring outcomes by recording mortality, morbidity and other population health parameters. It should also be compatible with other classification schemes and health information system elements.

Under these streams of work the specific aims of the Revision Process can be further expanded as follows:

1. Scientific evidence: To explore the scientific basis and epidemiology of diseases so that the ICD revision is based on the best available data. To achieve this specific aim, systematic reviews of the literature will be carried out by selected expert groups. A standard protocol will be followed to identify scientific publications to be reviewed. Journals included in Index Medicus and the Science Citation Index since the publication of ICD-10 (i.e., 1990) will be systematically reviewed to explore the implications for ICD categories. Specific questions will be formulated by expert groups to guide this research. For example:
 - a. Do the new discoveries of infectious agents or new understandings of their prevalence or role in disease require classification or coding changes? (E.g. Helicobacter pylori, SARS Corona virus, Ebola virus, etc...)
 - b. Do new discoveries concerning treatment other interventions require specific coding changes? (e.g. coding of drug resistance, refractory treatment, similarity of treatment response in different diseases, new diagnostic procedures and therapeutic interventions?)
 - c. Does the rapidly growing availability of information on disease risk genes, somatic mutations, or patterns of gene expression alter taxonomy? (e.g., patterns of gene expression in lymphoma or breast cancer; the first convincing risk alleles in common genetically complex disorders)

- d. Is the taxonomy developmentally sensitive so that it is applicable across the life span? For example, same disease definitions apply equally both to children, adults and elderly?
2. To explore the clinical utility of the Clinical and health system utility: Given the use of ICD for in the daily practice of various clinicians in different settings such as primary care, hospital settings, rehabilitation and long-term care settings, the classification should match the needs of users so that an appropriate level of detail is available.
 - a. The classification should reflect the relevant categories which are most frequently seen and treated in those settings without redundancy and with sufficient detail for differential diagnosis (e.g. the same classification of ICD could be presented in primary care with a single category for appendicitis, depression or diabetes mellitus. However, these diagnoses may not be sufficient for clinical care, and are less likely to be sufficient for research. One would like to know further details such as the type, treatment need and possible complications.)
 - b. The update and revision process will explore the needs and practices of different users to tailor the level of detail for different users without changing the overall master standard of ICD. ICD has been used for various purposes ranging from mortality, morbidity to patient safety and quality assessment tools. To achieve this there will be internet based *international discussion forums* that are open to clinical experts from different countries.
 - c. ICD should be appropriate for use in electronic health records. There may be a need to expand the level of detail of classification entities by linking them to standard description of signs, symptoms and other descriptors of illness. These are being formally developed over the world as standard terminologies. The revision process should proactively define the linkage between terminologies (e.g. SNOMED -CT and other terminologies) and the ICD-11.
 - d. The basis for clinical modifications made in different countries should be investigated to inform the revision process such as ICD-10-CM in the USA, ICD-10 AM in Australia, ICD-10 CA in Canada and ICD-10 GM in Germany and many others. Would other countries follow such clinical modification examples? If so what is the best way to maintain standardization and comparability? The revision process should aim to minimize the need for further national modifications.
 - e. The proposed changes will be tested involving various clinical practitioners in a field testing trial organized as a *Global Practice Network* in terms of their ease of use, relevance, utility, reliability and other properties.
3. Public Health Usefulness: The main topics of exploration will include:
 - a. ICD implemented to record deaths in different countries (i.e. mortality)? What are the main codes used, who makes the coding, which tools do they use, accuracy of coding practice, suggestions for improving standardization to achieve comparability, accuracy

and reliability? What are the cultural and local implementation issues regarding is the interpretation of codes?

- b. How is ICD implemented to record diseases in different countries (i.e. morbidity)? What are the main codes used, who performs the coding, which tools do they use, accuracy of coding practice, suggestions for improving standardization to achieve comparability, accuracy and reliability?
- c. What is the use of ICD for health financing and reimbursement purposes? How could it provide better input to casemix groupings (e.g. variants of Diagnosis Related Groupings and others) in many health systems. The revision process should ensure that casemix users have adequate input and joint use of WHO FIC classifications to produce casemix groupings.
- d. How is ICD used for disease surveillance, clinical registries, public health reporting, disease prevention, and population based surveys ? How could data from individual level use could be aggregated for population level indicators?
- e. Following the approval of the International Classification of Functioning Disability and Health (ICF) by the World Health Assembly as a WHO's international framework to describe and report health and disability, there is a need to align ICD codes and their definitions with the ICF, and review their joint use as WHO reference classifications for public health purposes.

These three streams of work will need to be woven together within an architecture that allows scaling for use in primary care, specialist clinical care domains, research and other settings. The architecture will build on the traditional ICD categories and improve each category with clear textual descriptions detailing their ontological properties and identifying relations between them.

This architecture will intend to link ICD with other health information system rubrics as a versatile information source and coding scheme and allow dynamic tailoring of the scheme for various users in e-health applications.

3. Plan of Activities

To address these specific aims we would like to create a set of activities that will bring together the above questions in a coordinated work plan and activity that we in short call an "*update and revision process for ICD*". This process:

- will be coordinated by the WHO Headquarters with active participation of whole WHO Network inviting all interested parties to improve the classification in terms of its scientific basis, clinical and public health use.
- will create a network of users involving scientists, practitioners, administrators, policy makers and consumers to make better use of this classification for understanding, communicating, planning and administering health care.
- will make state-of-the art evidence based reviews to reflect the most updated scientific knowledge in the classification including recent advances in medical and health sciences as well as in information technology
- will include field trials which are essential for testing the applicability of the classification as well as obtaining operational characteristics such as reliability measures. In addition the field trials serve to identify linguistic and cultural applicability issues, and serve as knowledge dissemination mechanisms.
- will allow linking classifications and clinical terminologies through their proper knowledge representation i.e. the diagnostic formulations as formal operationalization of any diagnosis including signs, symptoms, laboratory findings etc. in standard vocabularies
- will serve to provide the necessary transformation to the 21st century health information system needs to monitor and evaluate health outcomes.

A coordinated series of methods will be utilized to systematically-review existing evidence to revise the current ICD 10th version in order to arrive at a new generation of classification that will serve the needs of multiple users. This process will take place in three stages:

(1) compilation of scientific, clinical and public health evidence for revision, which is briefly called ICD-10 Plus.

(2) creation of a draft ICD-11 and field testing,

(3) creation of a systematic linkage to standardized health care terminologies to allow information processing by computers.

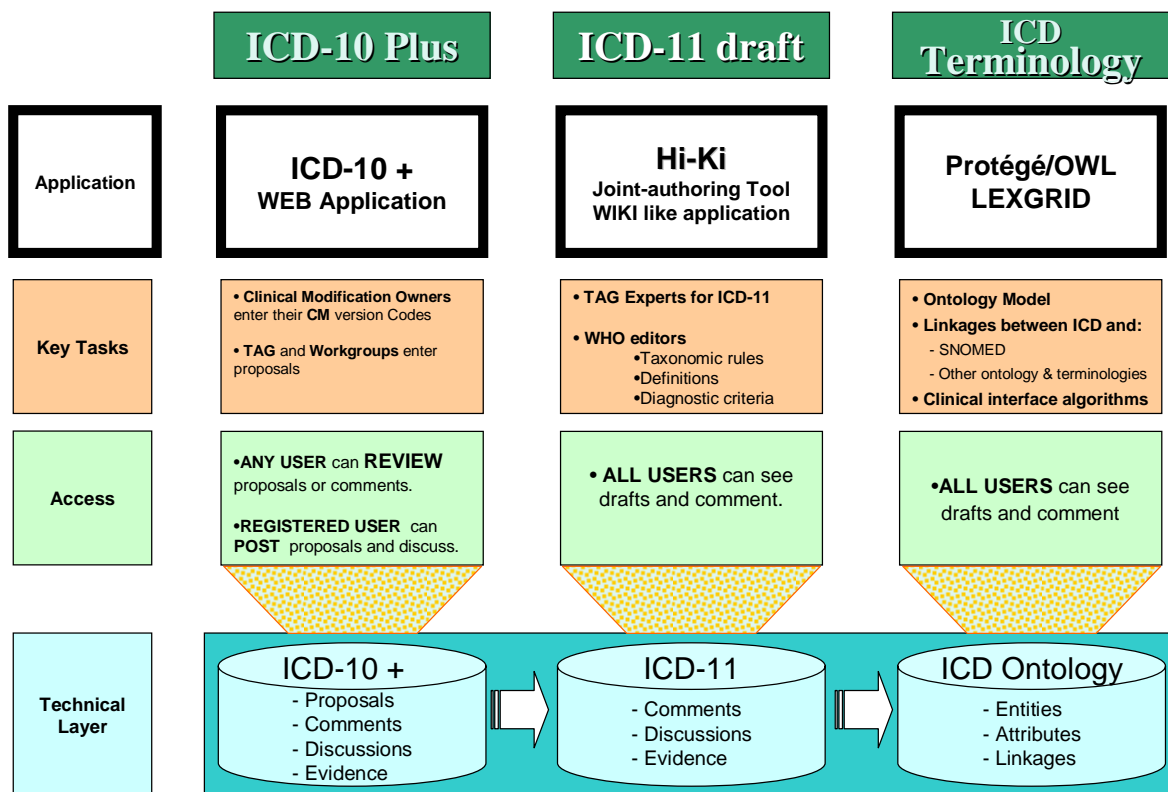


Figure 1: ICD Revision Platform

3.1 ICD-10 PLUS

ICD-10 Plus is a web application which allows users enter structured proposals for ICD revision. These may, for example, be changes in existing codes or insertion of new codes. Users can fill in a form in which they explain a proposal with the underlying rationale and publication references from PubMed or they can upload documents that are relevant to the proposal. The proposals are organized according to the existing ICD-10 structure so that all the users may browse through the classification and see what is proposed in various parts of the classification. The application allows searching the proposals and generating reports and works as a *workflow engine* which documents the decision process on the proposals and related annotations. This system requires moderation to avoid irrelevant entries. Any relevant entry by registered users will be displayed on the internet and will be open to discussion and commentary.

Relevant parts of national modifications that have evolved from main ICD10 will form part of ICD-10 Plus as they clearly indicate user requirements. In addition input from other WHO-FIC members will be inserted in ICD 10 Plus. ICD-11 is the first version of ICD to be developed since the Family of Classifications was put in place. Only in exceptional cases will ICD codes be deleted and the user referred to another classification. But many of the classifications can inform the development of ICD codes. Examples include use of ICF domains (especially in chapters 18 and 21), alignment between ICECI and chapter 20 and between ATC-DDD and any ICD list of drugs.

3.2 ICD-11 DRAFT

ICD -11 Draft is envisaged as a Wiki-like structured Joint-Authoring Tool. Selected Expert Groups will be given the mandate of drafting portions of ICD-11. Each Expert group will place their draft in to the WHO web portal using a web based joint authoring tool. The ICD-11 draft will include the following rubrics wherever applicable: (1) name of each entity, relevant inclusion and exclusion terms and a textual description (2) detailed clinical description including clinical and/or research rules for diagnosis. Each rubric will be posted in the Wiki application. Following a taxonomic review and clarification by WHO experts as needed. WHO will also commission a structured scientific peer review. The product will then be posted for public review for comments and later for field trials as explained later in this document.

3.3 ICD - Terminology links

Linking ICD (and all WHO Classifications) with terminologies is one of the main aims of the revision process. ICD-11 Draft Codes, Titles and all rubrics will be based on a sound terminology based on a coherent and internally consistent ontology system. This linkage will cover all the inclusion terms (*including relevant historical links, and index terms*) and the exclusion terms.

This linkage will require ontological definition of the entity including its taxonomic status (i.e. in what chapter, section in the classification tree, whether it is a disease, disorder, injury, syndrome, sign, symptom, other ; its possible level of use such as in Primary care, Clinical Care, Research; and other characteristics such as episodicity, severity, chronicity, ...) Expert Drafting Groups will be given the mandate of identifying core constructs and concepts of ICD-11 using terminology/ontology tools to formalize the concepts and constructs using SNOMED and/or any other terminology. This formalization will be useful in creating knowledge linkages (also known as mappings) and algorithms for assessment tools or Clinical Interface (e.g. Map of Medicine) and possible Decision Support Systems

These three web-base applications will be the core of the KMS portal which is described in more detail under 4.3.

4.1 Organizational Structure and Detailed Plan of Activities

WHO Headquarters will coordinate the overall ICD revision in consultation with the WHO Member States, the WHO-FIC Network, and multiple professional organizations to ensure that the final revision is broadly responsive to the many different aspects of health care. The work will be mainly carried out by the Revision Steering Group and the Workgroups as shown in figure 2 and described below:

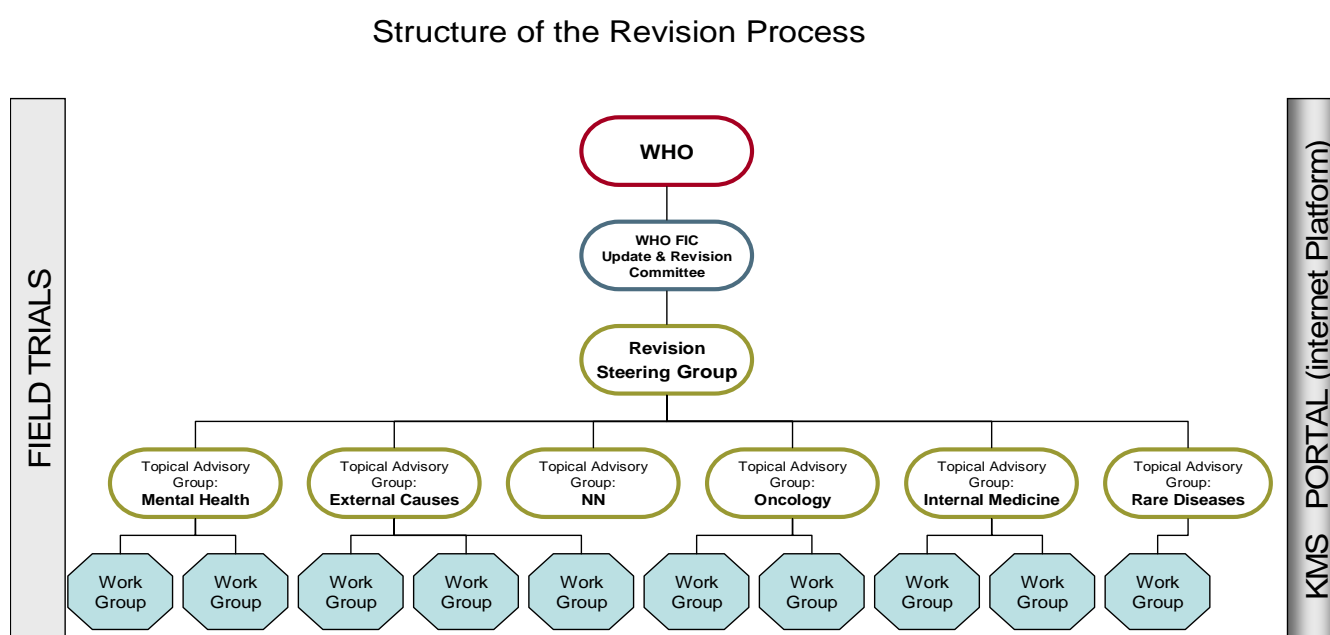


FIGURE 2: Structure of Revision Process

A. The Revision Steering Group (RSG)

A Revision Steering Group will serve as the planning and steering authority in the update and revision process. Its terms of reference will focus on the following issues:

- *Oversee the revision process and give advice for coordination of workgroups:* RSG will review the content of the revision process and will aim to ensure adequate coverage of all chapters and codes to ascertain the input from existing clinical modifications of the ICD and other WHO-FIC members, and maintain continuity between 10th and 11th editions.

- In addition it will see to whether the full scope of health care diseases and related health conditions (such as traditional medicine entries) are congruent with the overall structure. RSG will also make suggestions about the overall progress of the revision process, and synthesis of different inputs including field trials as well as participation from various regions, countries, languages and multiple stakeholders including NGOs.
- *Identify uses of the classification and ensure that the revision process addresses the needs of users:* RSG will ensure that the main uses of ICD for mortality and morbidity are maintained, and oversee proposals for other uses the classification; and preserve coherence and consistency of the description of entities between the interlinked versions of ICD for Primary Care, Clinical care and Research
- *Identify basic taxonomic and ontological principles:* RSG will observe the consistency and coherence of basic taxonomic and ontological principles across the overall revision process including:
 - Key definitions: disease, disorder, syndrome, sign, symptom, trauma, external cause...
 - Separation of disability and joint use with ICF
 - Attributes: etiology, pathophysiology, intervention response, genetic base ...
 - Linkages to other classifications and ontologies
- *Generate suggestions to resolve problems and ways to field test options as necessary:* RSG will make suggestions to solve problems or conflicts arising across different proposals, and may make suggestions for field trials to gather empirical data for their solution. This area of function may include comorbidity coding, inference of causality in coding rules, and indexing.
- *Develop plans and tools for transition from ICD-10 to ICD-11:* Identify requirements for users to adopt ICD-11 including coding guidelines, cross walks, electronic tools, and educational materials.

The Revision Steering Group will communicate on an ongoing basis by email, have monthly telephone conference calls, and will convene at least twice annually for an in-person meeting. The composition of the Revision Steering Group will be as follows:

1. the chairs of the Topic Advisory Groups in the Revision Process
2. Representatives of the WHO-FIC Network (chairs of the Update and Revision; Family Development Committee, and Planning Committees)
3. Other invited terminology, classification and public health experts
4. responsible WHO officers

The Revision Steering Group may invite consultants and other members of the Topic Advisory Groups and related workgroups as necessary to take part in their meetings.

B. Topic Advisory Groups (TAG)

Topic Advisory Groups will serve as the planning and coordinating advisory body for specific issues which are key topics in the update and revision process, namely Oncology, Mental Health, External Causes of Injury, Communicable Diseases, Non-communicable Diseases, Rare Diseases and others to be established.

The primary charge of each group will be to advise WHO in all steps leading to the revision of topic sections of ICD in line with the overall revision process. In particular:

- *Advise on particular topic revision steps and establish workgroups and partners to involve* - The TAGs will advise WHO on constitution of working groups to undertake generation of necessary evidence, to develop proposals for changes and to focus on specific issues as needed. Each TAG will (a) determine the number and content areas of the workgroups, (b) identify the members and chairs of the workgroups, (c) present an initial mandate to each workgroup, (d) establish procedures for the activities of the workgroups, and (e) facilitate cross-fertilization of ideas and reducing redundant efforts by making workgroups aware of one another's activities.
- *Advise in developing various drafts of topic segments in line with the overall production timeline of ICD-11* TAGs will review initial recommendations of the workgroups and consolidate those to achieve consistency in proposals across groups and areas.
- *Advise in developing protocols for and in implementing field trials* - TAGs will also assist WHO in identifying appropriate representatives of various stakeholders and in establishing effective collaboration/consultative mechanisms.

Topic Advisory Groups will consist of experts within each major domain of the classification chapters. Currently there are following:

- | | |
|---------------------|-----------------------------------------------------------|
| – Mental Health: | S. Hyman |
| – External Causes: | J. Harrison |
| – Rare Diseases: | S. Ayme |
| – Oncology: | IARC Editor(s) |
| – Internal Medicine | K. Sugano |
| – Others | <i>to be formed e.g. Child and Adolescent Health etc.</i> |

Each TAG will function at two levels: *chairs and members*, and if necessary a *workgroup structure*. TAGs will maintain regular communication among members and workgroups using the ICD revision and update platform as the main information management and sharing portal as well as phone and e-mail.

C. Workgroups

Work Groups will serve as the key functioning unit for the review of evidence and generation of main proposals at a specific topic in the classification. For example, the TAG in the Mental Health Area will be responsible for the whole of chapter V and its linkages, whereas it may generate 5-10 working groups to carry out the systematic reviews on special sections of the chapter such as schizophrenias and psychosis; mood and anxiety disorders or topics such as children and youth, common brain disorders, etc

Each workgroup will be led by preferably two co-chairs, one of whom will be a member of the relevant TAG. These individuals will be responsible for selecting the members of the workgroup and establishing the membership and focus of the subgroups. They will supervise the work of the workgroup, monitoring progress and ensuring quality control. If necessary each workgroup may include subgroups corresponding to subclasses of disorders or other areas requiring focused attention within the workgroup domain. Workgroups are expected to include approximately 10-12 members. Subgroups can include participants who are not members of the workgroup, but must be chaired by a member of the workgroup. An effort will be made to draw members of workgroups and subgroups from multiple disciplines and nations.

Co-chairs of all workgroups will have privileged access to the ICD Update and Revision Portal and will participate in a monthly telephone meeting with the TAG so that co-chairs from each workgroup can learn about the activities of other workgroups.

Tasks for the Workgroups will include:

- *Developing a preliminary position statement on each core diagnostic issue:*

The workgroups will be asked to consider core issues that they will seek to address for each diagnostic entity in their content domain, and to develop a preliminary position on each issue based on their preexisting knowledge of this domain. The initial position statement will effectively set the agenda for the workgroup and will define the range and scope of questions that the workgroup will consider. The initial set of core *diagnostic issues* to be considered by each workgroup are listed in box I - these may be taken as an example by each workgroup to expand further on the key classification issues on the topic of interest.

TEXT BOX 1: Core diagnostic issues for each workgroup to consider:

- I. Definition of the diagnostic entity as a medical disease or disorder.** Given the key taxonomic guidelines and definitions each group should draw a line around the entity of interest, identifying its critical properties. How does the workgroup fundamentally view the full spectrum of disorders/diseases in this chapter in terms of their classification? Identify key criteria and level of evidence.
- II. Clustering of signs, symptoms, and operational characteristics.** Identify the features that are necessary and sufficient to define the disease/disorder.
- III. Link to underlying pathophysiology and genetic markers.** Identify the intra-individual markers that are associated with the disease/disorder, considering their biological plausibility, their measurement properties (e.g., specificity, predictive power), and their role in treatment response.
- IV. Clinical utility of the classification entity.** Consider the usefulness of the classification entity in diagnosis, predicting treatment response, course, and outcome.
- V. Reliability of the use of the classification entity.** Consider the stability of the classification entity over time and its consistency of detection across assessors and measurement instruments.
- VI. Validity of the classification entity.** Consider the associations of theoretically relevant variables with measures of the disorder and the support they provide for the validity of the diagnostic construct.
- VII. Separation of disease and disability elements.** Identify the features that signal the presence of the disease/disorder, defining the disease/disorder without reference to the distress, impairment, or other consequences that it produces. Suggestions to link to WHO ICF and operationalize specifically the criteria on disability and distress related rubrics.
- VIII. Cultural elements that need to be attended.** Consider variability in the presentation of the disease/disorder across cultures. Identify ways to achieve cross-cultural comparability and utility of diagnostic criteria rather than listing separate culture-bound syndromes or formulations.
- IX. Threshold considerations.** Identify the number and nature of diagnostic criteria that should be required to qualify for the classification entity. Consider the nature of the boundary separating the disease/disorder from normality, including evidence for the categorical/continuous distinction. Consider the classification entity boundaries with other classes, including challenges of differential diagnosis.
- X. Other nosological issues relevant to this entity** Identify any other aspects of the classification entity that the workgroup believes to be in need of evaluation, including potentially controversial aspects of the disorder that will need to be addressed. This list of additional issues may change as the evidence related to this disorder is reviewed.

- *Review the empirical evidence - Workgroups* will survey the available evidence for each diagnostic entity to address the core diagnostic issues described in BOX I. Evidence will be reviewed using a three-tiered, iterative process that maximizes input from sources that are most readily accessible: (1) Systematic review of the published literature; (2) If necessary and possible, targeted secondary analysis of existing data, (3) If required, proposal for collection and analysis of new data collection to address unanswered questions through rapid distribution of target measures to clinicians in the revision network {see below 4.2 field trials } that can be completed by the clinicians themselves or administered to their patients.
- *Report results and recommendations to the TAG and global community* - Using the results of their evidence-based reviews, the disorder workgroups will formulate suggestions for updating and revising the ICD-10 diagnostic categories, operational criteria, and/or overall coding structure. Each disorder group will be asked to write and to post on the KMS portal an interim report of its progress every six months as well as a final report documenting its final results and recommendations.
- *Respond to feedback from peer review - comments* on workgroup reports will be solicited from the scientific community and other ICD stakeholders. Public comments will be continually collected and reviewed by WHO staff that will screen them for content and relevance before forwarding them to the appropriate workgroups. Workgroups will complete their proposals taking into account the reviews and annual updates of their literature reviews to ensure that the information in their final report is as comprehensive and up-to-date as possible.
- *Suggestions and evaluation of field trials:* The provisional revised diagnostic criteria recommended by the workgroups will be tested in one or more iterations of field trials {see below 4.2}. Field trials will be conducted in collaboration with the international network of mental health practitioners who will apply the provisional criteria in their clinical practice. Results obtained through this Global Health Practice Network (GPHN) will be used to provide additional feedback to the workgroups about aspects of the diagnostic criteria that could be further improved. Given the key questions identified in the review process workgroups will be asked to develop questionnaires. Results of the field trials will be provided to the workgroups to serve in developing the final revisions and recommendations.
- *Final revisions and recommendations* - Workgroups will prepare a final report which will be the key document annotating the key evidence as the authoritative source. These reports will be presented to the Revision Steering Committee and posted on the ICD update and revision platform. These reports should also identify unresolved and emerging questions for continuous update process. The resulting proposals will be published in one or more of several possible forums, including the ICD text itself, the ICD web page, books published by WHO on the ICD update and revision process, or a companion workbook accompanying the newly-published ICD-11.

4.2 ICD Revision Field Trials

An international network of practitioners will be created in collaboration with the WHO-FIC Network and different NGO's in relations with WHO. This Global Health Practice Network (GHPN) will include numerous health professionals throughout the world who agree to participate in quarterly e-surveys aimed at providing diverse kinds of information about patient characteristics that can be used to inform the ICD update and revision process. Both clinician ratings of individual patients and patient self-report questionnaires collected by the participating clinicians will be used as part of these ongoing surveys. The GHPN will enable real-time collaboration to obtain direct patient assessments on crucial diagnostic questions among current patients within practices throughout the world. In addition to providing a venue for quick, large-scale data collection to inform the review of evidence and development of diagnostic criteria, the GHPN will also serve as the main process in field trials that will allow us to test the provisional revised criteria and evaluate their reliability, validity, and clinical utility in a range of clinical settings around the world

4.3 Knowledge Management and Sharing Portal for ICD Revision

To facilitate communication among the members of the workgroups, and make the expert group processes transparent to the field, we intend to create a permanent internet process, which we call the Knowledge Management and Sharing (KMS) portal.

Many experts from all over the world will participate in different aspects of the update and revision process. In order to facilitate better **communication** and **collaboration** this process will be open to public and to working groups at different levels of access. The portal will be the *single point of access* for the update and revision process. However, the communication will not be one way as in classical web sites. On the contrary most of the contents of the site will be generated by the users. The site will be composed of different components such as a calendar of activities, discussion forums, collaborative document creation process document libraries, etc.

The important elements of this *KMS Portal* will be:

- a) *The ICD Revision Platform* - This platform is described in sections 3.1, 3, 2 and 3.3 as ICD-10 PLUS, ICD-11 DRAFT and ICD TERMINOLOGY. that will both facilitate communication within expert workgroups and will make the expert workgroup processes transparent to the field by requiring expert groups to post interim products of their deliberations on a regular schedule for comment through use structured notes in form of "blogs" (short for web-logs to annotate the evidence behind the decision making); and "wikis" (joint authoring tools to write in a predetermined style over internet including many participants and reviewers) for wider participation and linking evidence to proposals (e.g. participants will be asked to back their comments with publications from PUBMED and other open sources).
- b) A *public forum* in which end-users can provide feedback to expert groups throughout the development process;

- c) *Structured field trials* focusing on key questions, and testing of various options for their feasibility, utility and relevance.

All of these components will be grouped according to a grouping structure that will be generated by experts of the field. Each user entering the portal will see a custom page for him/her depending his/her roles in the update and revision process. This is important because the participants will have expertise on a diverse number of topics. We would like to show them the information that is relevant to their area of expertise so that they can function in a more efficient way. The level of participation of the users will be different as well. For example, some users may be only participating in the discussions where as others may be in charge of editing the documents in the light of the discussions. In summary, we should be able to define **roles** and assign users to these roles so that each user accesses the portal from a perspective specified by his/her roles.

We expect that through the KMS portal the final revision will be broadly responsive to many different aspects of health care, and provide unprecedented access to the ICD by users who were unable to access previous editions because of financial constraints or limited distribution of hard copies. This kind of transparency and constant back-and-forth exchange between the expert groups and the field represents our best hope of making the final ICD revisions useful to its wide range of likely constituents.

Each step of the ICD update and revision process will be documented in an Internet knowledgebase process. There will be open access to this system in order to allow online data sharing and unrestricted discussion among participants from any relevant discipline throughout the world as the revision process evolves. Although the ultimate goal of this system is to refine successively evidence-based conclusions, an important component of this system will be the posting of data gaps. As noted in the last paragraph, our aim in doing this is to make relevant researchers aware of these data gaps in the hope that relevant data will sometimes be available and that targeted secondary analysis can be carried out to shed some light on a number of important knowledge gaps.

The activity will thus produce *permanent internet based workspace* that will document the evidence-based systematic reviews, meta-analysis of available data and discussion forum open to international multi-disciplinary participants. We will create an Internet Platform in multiple languages (English, Spanish, French, Chinese, Russian, Arabic as UN Standard Languages and other languages that may be supported by other partners - such as in Japanese) to enable participation of all interested parties using transparent knowledge management and sharing mechanisms. We will use the same internet platform to help disseminate the products of our labors throughout the world as an international public good. This kind of transparency and constant back-and-forth exchange between the expert groups and the field represents our best hope of making the final ICD revisions broadly useful to the wide range of constituents for whom it is being devised.

The KMS portal will allow increased feedback from the global health community. In the past, draft versions of proposed revisions were reviewed only by workgroups. WHO advisers saw only the penultimate and final versions of the proposed revisions, whereas the revised criteria were not seen by anyone else prior to their publication. This arrangement will be modified in the ICD update and revision process to provide earlier feedback. Specifically, interim drafts of the proposed ICD revisions will be reviewed by the TAG as well as posted on the KMS Portal for the public for comment and debate as soon as they become available. In addition, steps will be taken to involve the

broader community in the update and revision process and to make workgroup activities open and transparent. The workgroups will review and synthesize the feedback offered by the TAG and by the members of the international research community who participate in the commentary, debate, and sequential refinements of the revisions posted on the KMS Portal. Thus the impact of annual meetings will be multiplied with the establishment of a permanent platform that enables continuous input and quality improvement.

5. Basic Taxonomic Principles and Health Information System Implications

It is imperative to address the taxonomic requirements of a key classification as ICD to represent the health knowledge in appropriate fashion to be useful in health information systems. Data coded in ICD will be useful in public health decision making as an international standard specifically addressing issues of mortality and morbidity statistics, clinical decision making and other administrative decisions.

The WHO and the participants in the revision process should address, agree and adhere to common taxonomic principles to maintain internal consistency and coherence of the ICD as well as its interoperability with other health information system elements.

A classification should be clear about what it classifies: its universe, its key dimensions, its units of classification and definitions of these units, its organization in terms of its structure and relations among its units, and its presentations in different versions. Key taxonomic principles need to include epistemological clarifications, ontological definitions and pragmatic conventions as a result of common consensus. For example, as a classification of diseases ICD has to define what a disease is. So far ICD has not officially adopted a definition of disease. We have, therefore, put up a working definition to guide the current work --which may be improved as the work progresses. The current working definition is as follows:

A disease is a set of dysfunction(s) in any of the body systems defined by:

1. *symptomatology - manifestations*: known pattern of signs, symptoms and related findings
2. *etiology*: an underlying explanatory mechanism
3. *course and outcome*: a distinct pattern of development over time
4. *treatment response*: a known pattern of response to interventions
5. *linkage to genetic factors*: e.g., genotypes, patterns of gene expression
6. *linkage to interacting environmental factors*

This definition is also intended to allow ontological analytic breakdown of each entity in ICD whether it is a disease or other entity such as a disorder, injury, sign, symptom or other entity which all have to be defined and identified. Such definitions will provide attributes which are necessary in creating an ontological system. ICD-11 will then be defined as an operational relational model of diseases and related health conditions which will have clear descriptions of each entity and their attributes such as which body system, body structure or function, causative agent or other origin, temporal relations (such as onset, course, offset), severity (such as spread, gravity) impact (such as activity limitations, participation restrictions, distress).

It is clear that ICD is used in various settings with different level of resolution ranging from a set of 100 codes to 10,000s. It therefore requires a compatible coding scheme that can zoom in and out across various levels - which is possible through a computer application that tailors a master version to generate versions for Primary Care, Clinical Care and Research. For example the ICD-11 Primary Care version should focus on most frequent conditions which are treated in primary care which are generally broad categories (e.g. depressive disorder) . Clinical version would include all clinical conditions with diagnostic guidelines (e.g. unipolar, bipolar depressive disorder mild, moderate, severe...). Research version would include detailed standardized criteria for all disorders for identifying research groups and tentative disease labels that are not yet in official classification.

It is essential that the ICD diagnosis should be further elaborated using clinical terminologies to formalize the diagnosis with operational definitions. For example, F32 Depressive Disorder will be captured as SNOMED CT terms each coded and defined such as (Low mood, loss of interest, low energy, sleep problems (insomnia, early awakening,...) appetite problems (low appetite, binging...) sexual problems (libido loss); guilt ; thoughts of death and suicidal ideation or acts. Similarly Tuberculosis will be further detailed by primary infection, positive tuberculin test, infection site (lungs, bone, kidney etc...) symptoms (coughs, sputum, fever, sweating, weight loss...) and findings (bacillus positive, culture positive etc). Same will be done as capturing all the diagnostic schemes for all areas of medicine under the WHO classification guidelines together with international experts in the related fields.

The formal representation of ICD in terminologies will allow two possible ways of processing the health information (1) declarative searches: allowing automated coding of medical records in electronic environment identifying the presence of a constellation of symptomatology and if present a probability towards the ascertainment of an official diagnosis. (2) Procedural searches: As in the case of Map of Medicine the coded information will build a template for verification of diagnostic explorations similar to a computerized diagnostic support system.

6. CONCLUSIONS

The active phase of the ICD update and revision process will begin in 2007. This work will go in two streams. ICD -10 Updates will routinely continue as annual updates. Every three years major updates and cumulated updates will be published.

Towards an ICD-11 two major drafts will be developed. An *alpha draft* for view by the internal users (e.g. WHO FIC network and experts) and a *beta draft* for the whole world for field testing. It is envisaged that a beta version could be developed by 2010. Given the interest by multiple stakeholders and use of available resources the overall revision process will enable participation from the global health community and multiple stakeholders. Ensuring web-based tools the revision process will be transparent to all users and will make use of larger synthetic capacity of empirical literature through use of work groups and topic advisory groups. The ICD 11-beta draft will be subjected to systematic field trials for feasibility, reliability, clinical utility and validity.

Given the fact that the active phase of the ICD revision process starts in 2007, a beta version of ICD-11 will be available in 2010 for systematic field trials. Field trials will focus on the feasibility, reliability, clinical utility and validity of the classification. Following the field trials, we will have a penultimate version for public viewing and response from all interested parties. A final version is intended to be submitted to the World Health Assembly for approval by 2014.

References:

- Chronicle WHO Vol.II, No 6, 1948, WHO press
- WHO (2004), International Classification of diseases, 10th revision, 2nd edition, WHO press
- World Health Assembly (1948), WHO Constitution 1948
- World Health Assembly (1990), ICD Resolution (WHA 43.24)
- World Health Assembly (1967), Regulations regarding nomenclature, in WHO, (2004) ICD-10, 2nd edition, WHO press, p.1194-1196
- Wikipedia, online encyclopedia; www.wikipedia.org
- Foundational model of anatomy; sig.biostr.washington.edu/projects/fm/
- Map of medicine; www.mapofmedicine.com

(仮訳)

ICD-11 の作成

改訂プロセスの全容

T. Bedirhan Üstün MD	WHO
Robert Jakob MD	WHO
Can Çelik	WHO
Pierre Lewalle	WHO
Nenand Kostanjsek	WHO
Mea Renahan	分類改正改訂委員会委員長
Richard Madden PhD	国際分類ファミリー拡張委員会委員長
Marjorie Greenberg	企画実行委員会委員長
Chris Chute MD	改訂運営会議議長
Martti Virtanen MD	ターミノロジーグループ委員長
Steve Hyman MD	精神部会長
James Harrison MD	外因部会長
Segolene Ayme MD	希な疾患部会長
Kentaro Sugano MD	内科部会長

WHO-FIC ネットワークを代表して

要約

本稿は、国際疾病分類（ICD）の第 11 回改訂版の作成に関する全体の流れについて説明するものである。

一連の連係した手法を活用して現在の ICD-10 を改訂し、新世代の分類に到達する。ICD-11 に至る改訂作業は次の 3 段階で進められる。①分類に関する科学的、臨床的、公衆衛生的エビデンスの体系的な点検を行う、②ICD-11 の草案を起草し、草案のフィールドテストを行う、③標準的な医療用語との意味のある関連付けを行い、コミュニケーション、データ処理の標準化、研究を円滑にする。従来通り、ICD の形式と ICD の死亡・罹患報告への活用は維持される。さらに、異なるユーザーのニーズに対応するために改訂版を相互に関連する三つのフォーマットで提供する。三つのフォーマットとは、プライマリケア、臨床ケア、研究である。知識を十分に表現するために、分類の構築にはオントロジーツールを活用し、このツールは徴候や症状の組み合わせ、重症度、経過、遺伝情報やその他の情報など様々な領域をカバーする。このオントロジーに基づく手法は、コンピューターを使った情報処理の標準化を電子医療アプリケーションを通して可能にする。国際生活機能分類（ICF）等の WHO の他の分類および ICD 各国版も検討し、ICD の内容の向上を図るとともに分類間の整合性を高める。改訂作業においては、オープンデータベースとして構築したプラットフォーム等の分散型ウェブツールを活用して提案、議論、エビデンスを突き合わせる。また、ウィキ（Wiki）のように自由に文書を書き換え、共同で文書作成のできるツールを構築して ICD-11 の草案を起草する。ユーザーはウェブ上の国際的なプラットフォームを通じてフィールドテストを行う。このウェブ上の知識管理共有プロセスは、多数の関係者による改訂作業への幅広い参加を可能にし、関係者は新しい ICD の作成と評価に関わる。

評価と連携のための仕組みを構築することで改訂作業の進捗を評価し、改訂作業が正しい方向に進んでいることを確認する。現時点では、改訂運営会議（Revision Steering Group）を監督機関として設置している。改訂の各主要分野の作業は分野別専門部会（Topic Advisory Group）と複数のワーキンググループが行う。この過程を通して得る成果物は、単に分類体系として機能するばかりでなく、医療情報システムの基本要素となることが期待される。

キーワード：ICD、分類、ターミノロジー、保健情報システム、国際保健