

116

A

別 冊

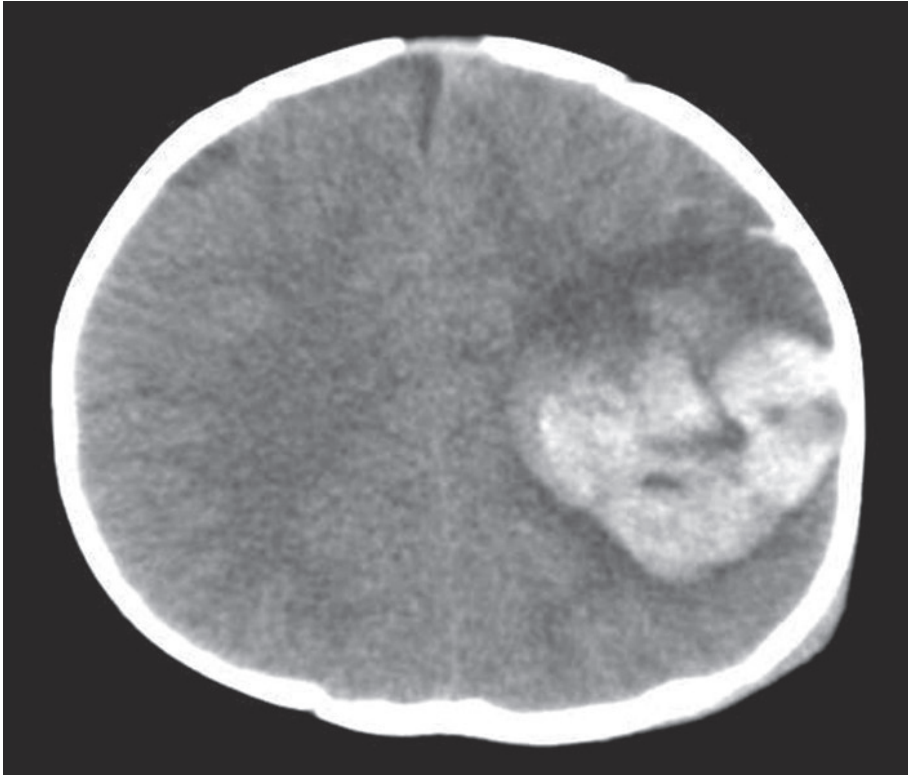






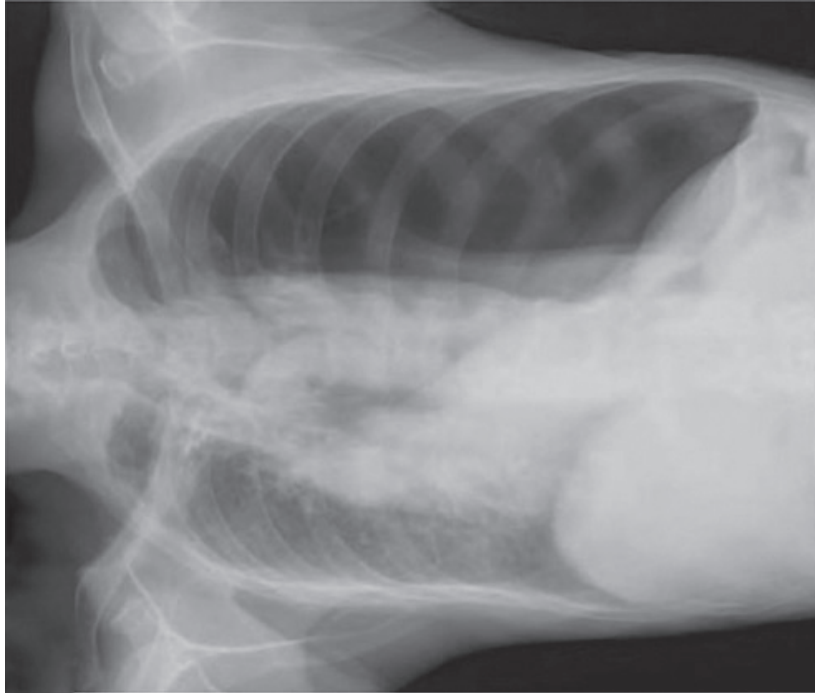
No. 1

(A 問題 17)



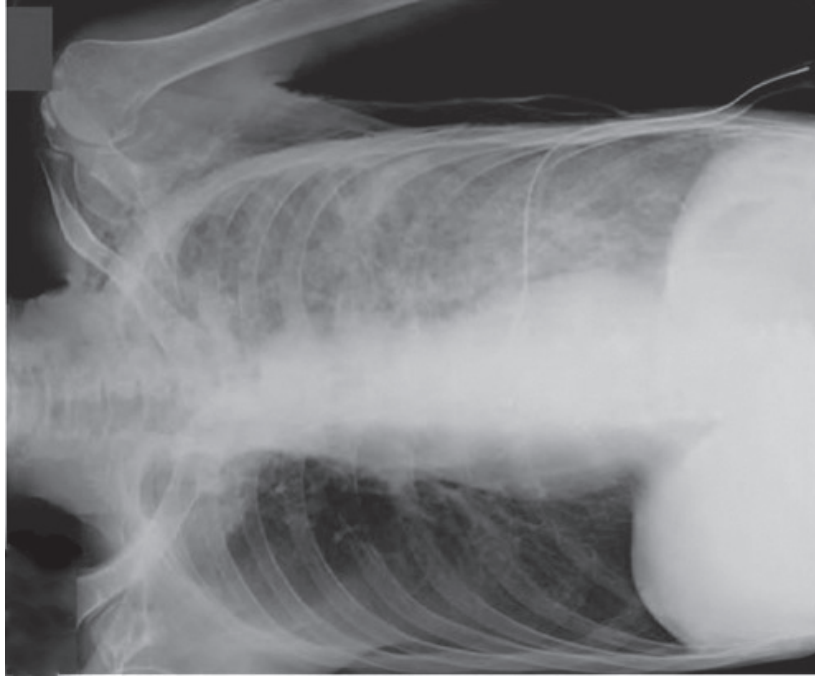
頭部単純 CT

No. 2 A (A 問題 20)



来院時

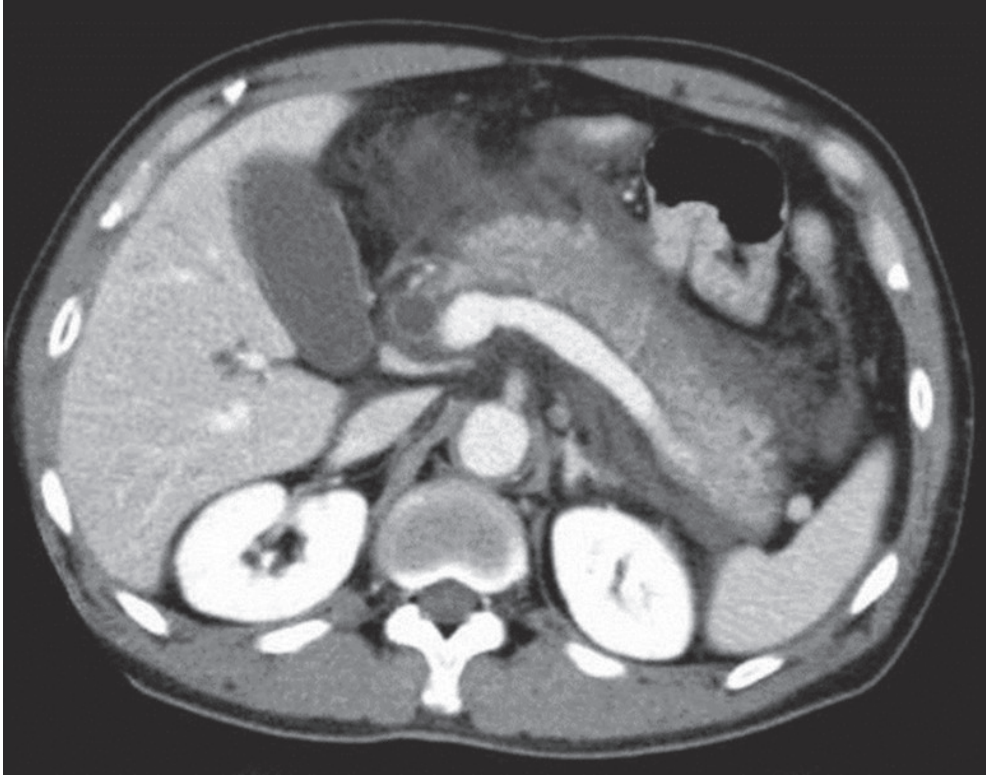
No. 2 B (A 問題 20)

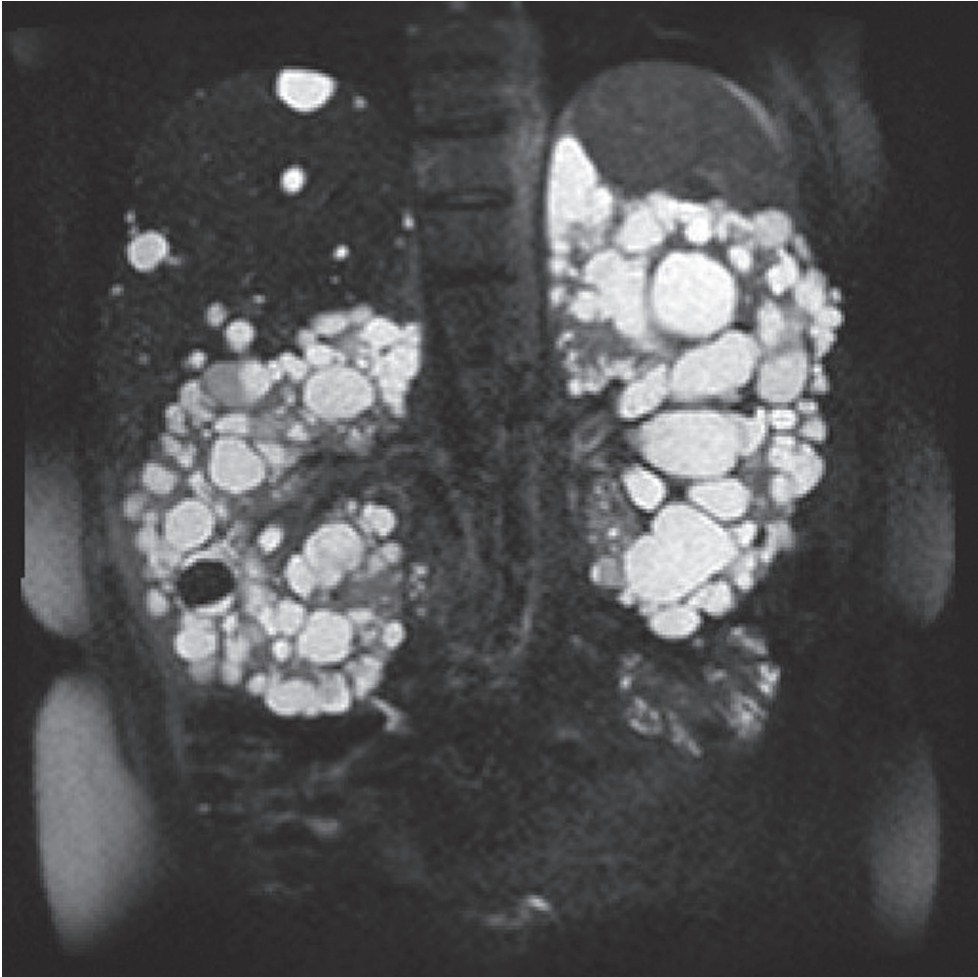


胸腔ドレージン挿入後

No. 3

(A 問題21)

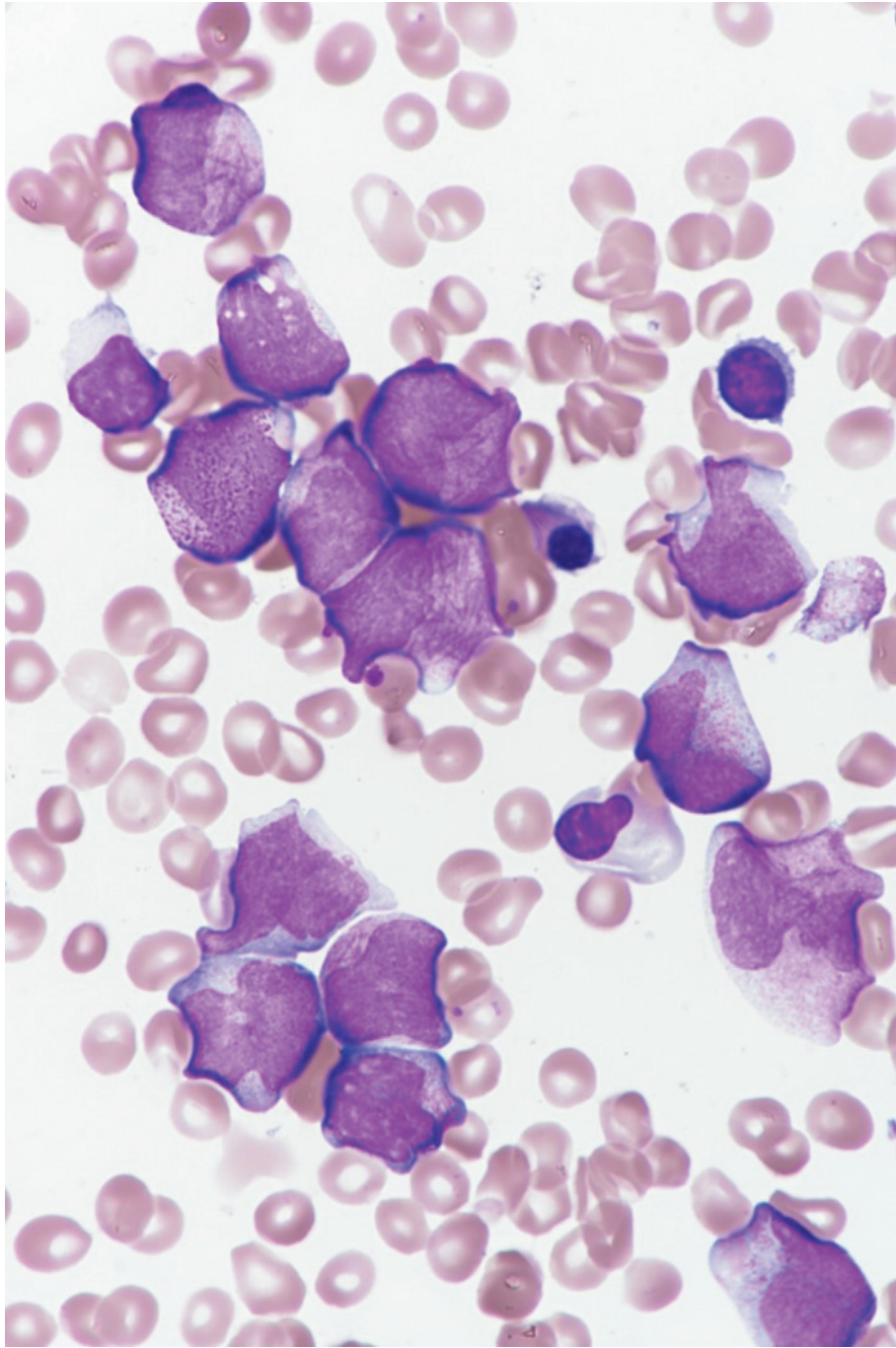




脂肪抑制 T2 強調冠状断像

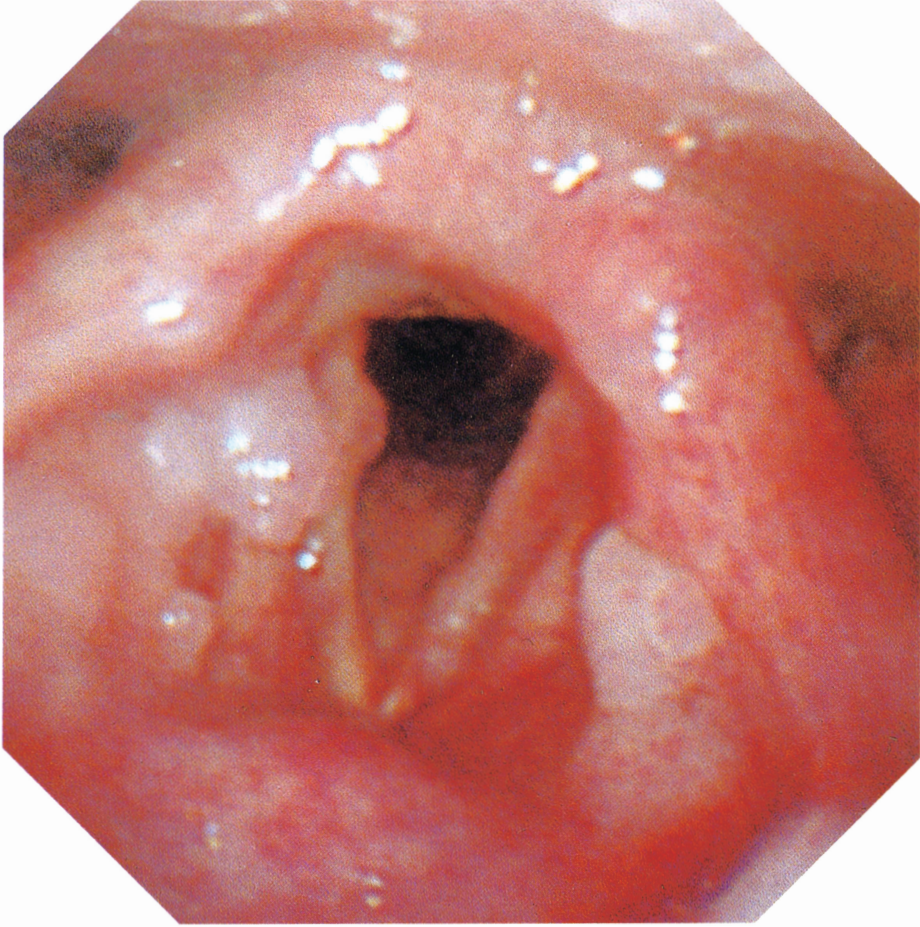


No. 5 (A 問題 23)

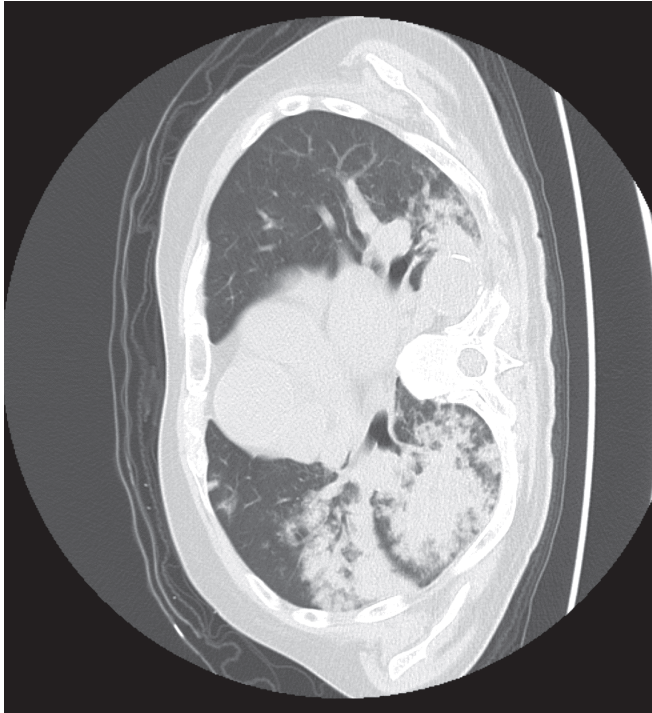


No. 6

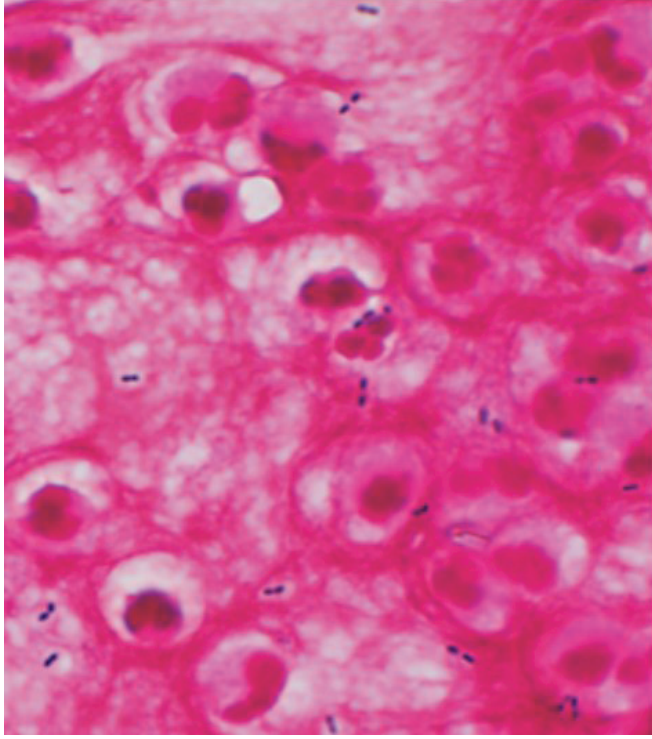
(A 問題 24)



No. 7 A (A 問題 27)



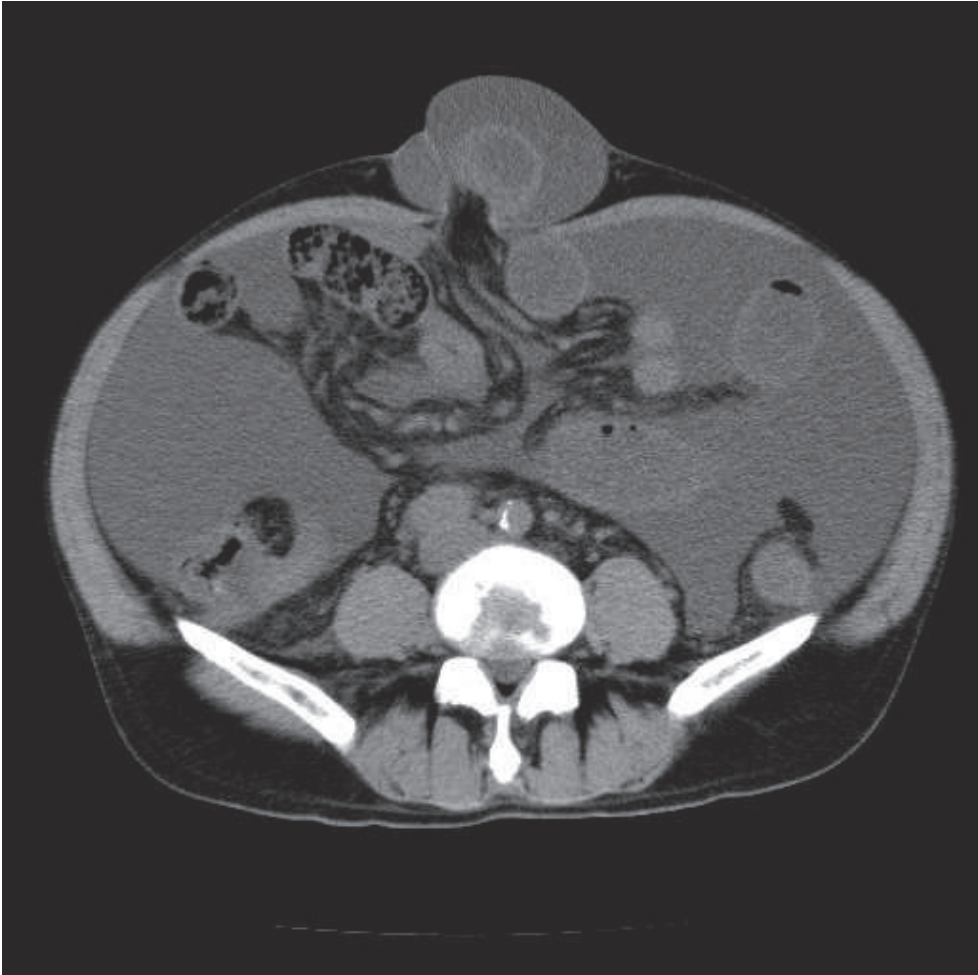
No. 7 B (A 問題 27)



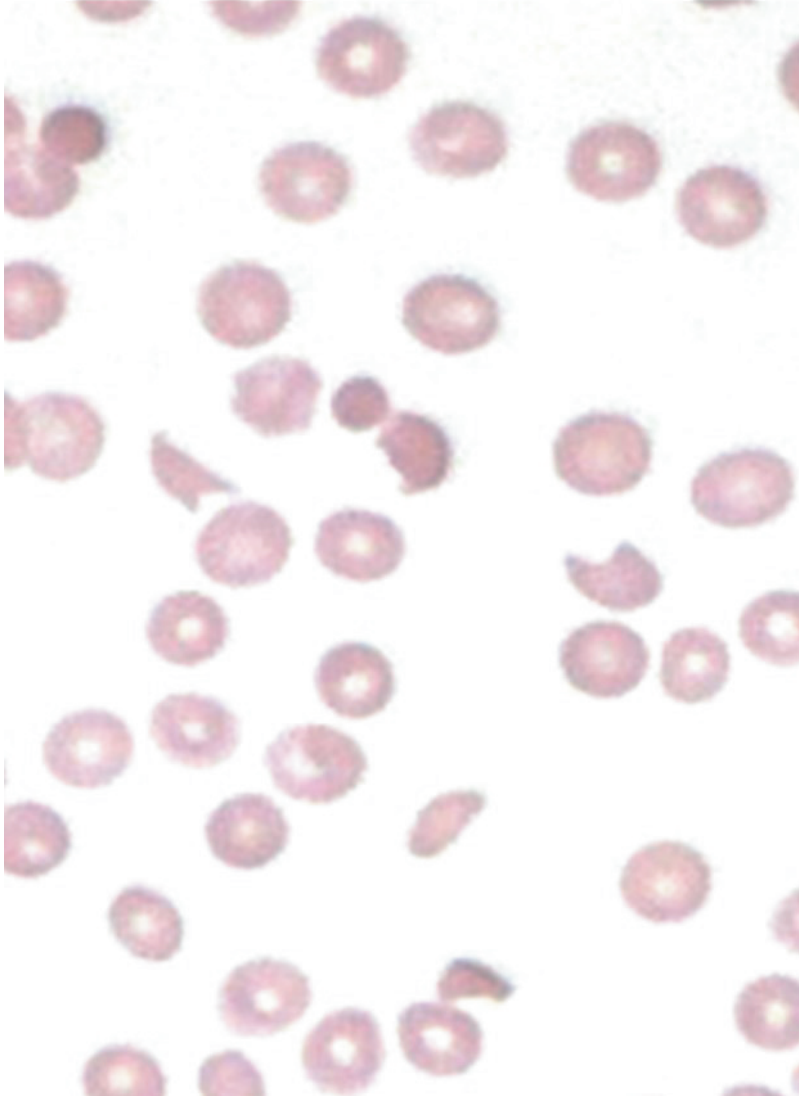


No. 9

(A 問題 36)



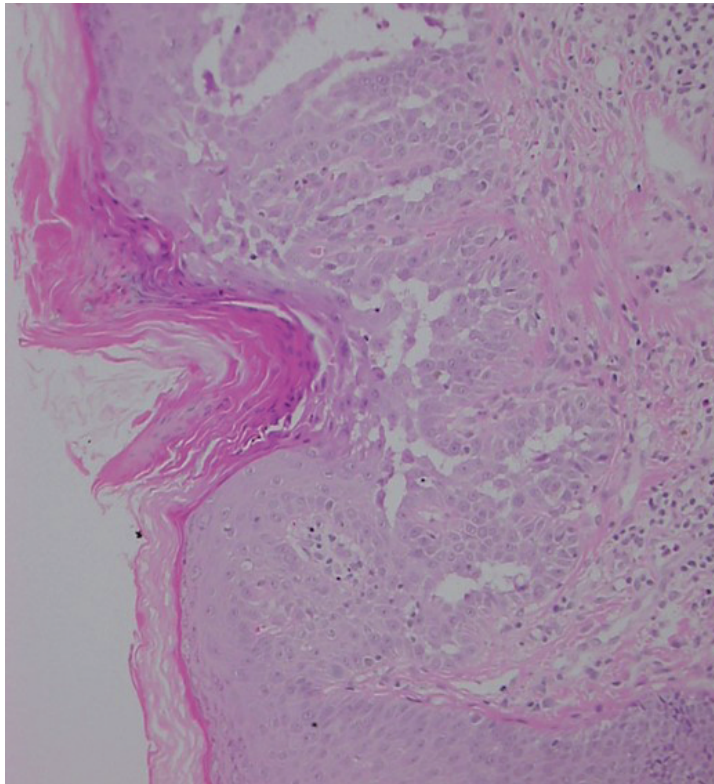
No. 10 (A 問題 37)



No. 11 A (A 問題 39)

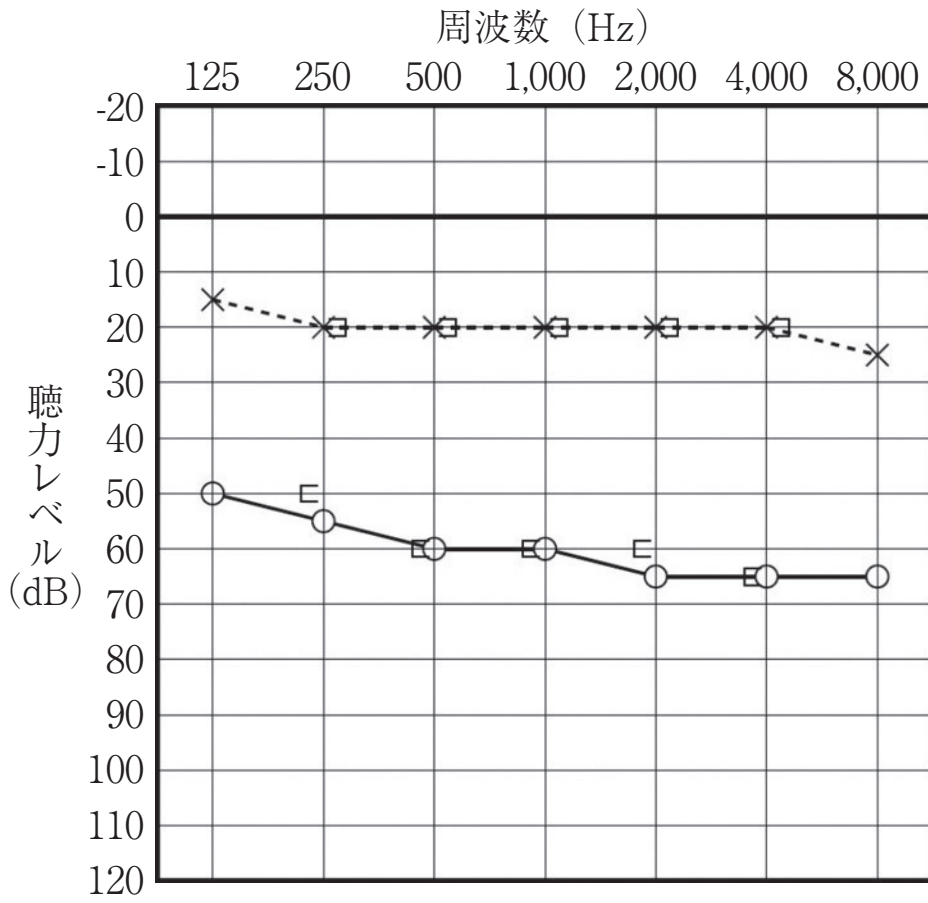


No. 11 B (A 問題 39)



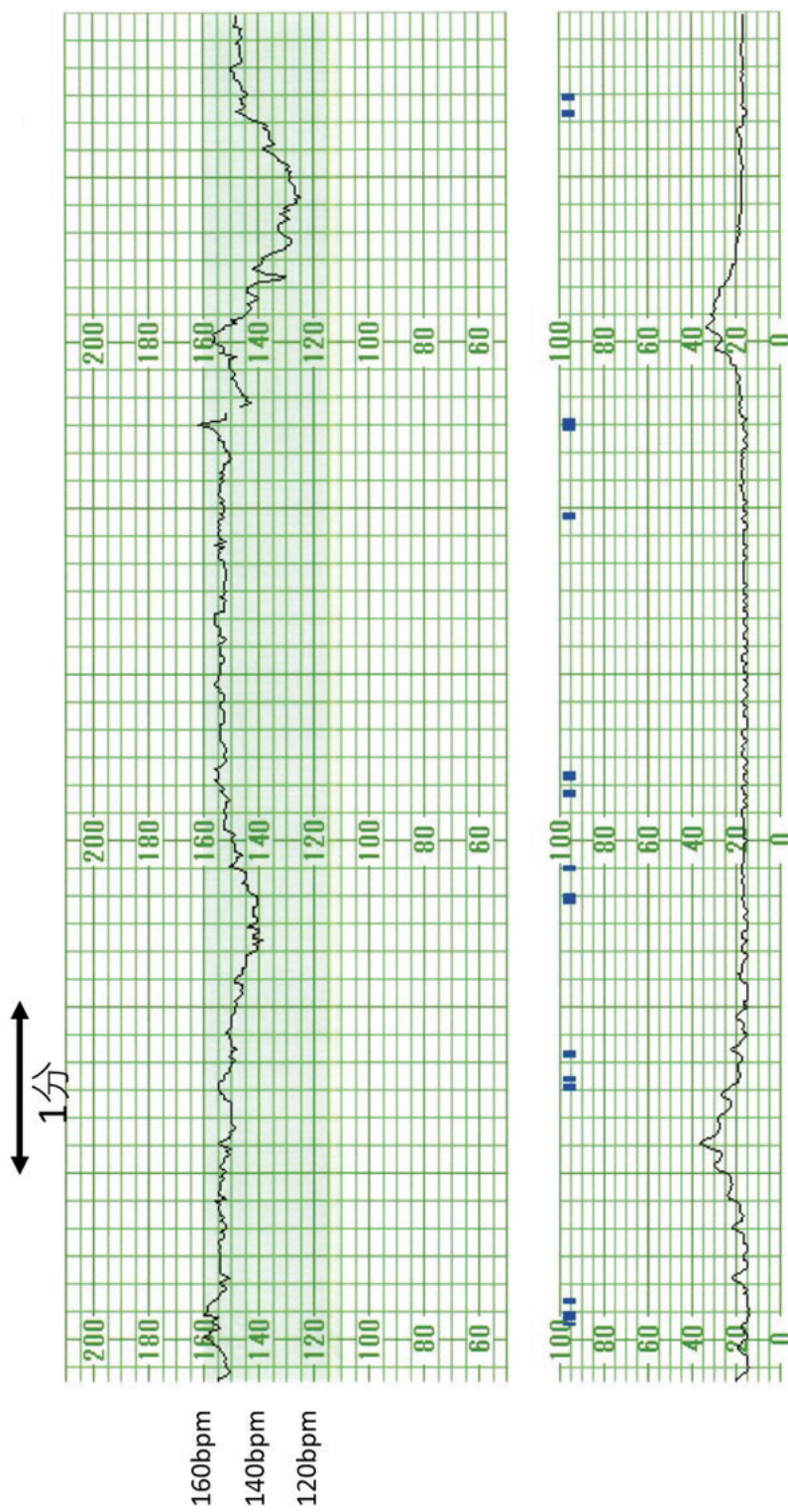
No. 12

(A 問題41)





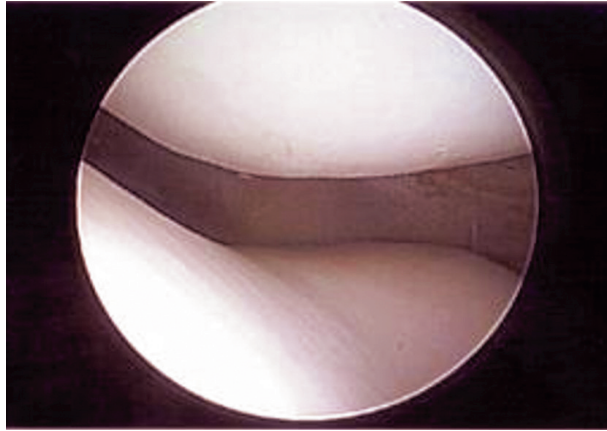
No. 13 (A 問題 42)



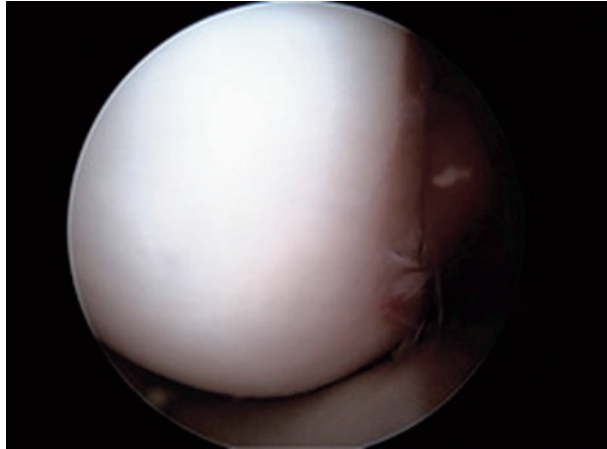
No. 14

(A 問題 45)

①



②



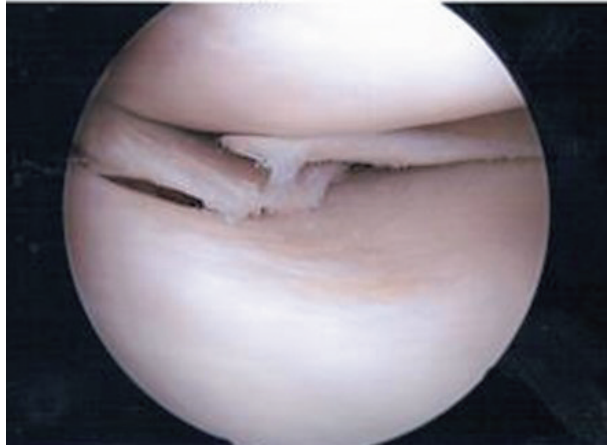
③



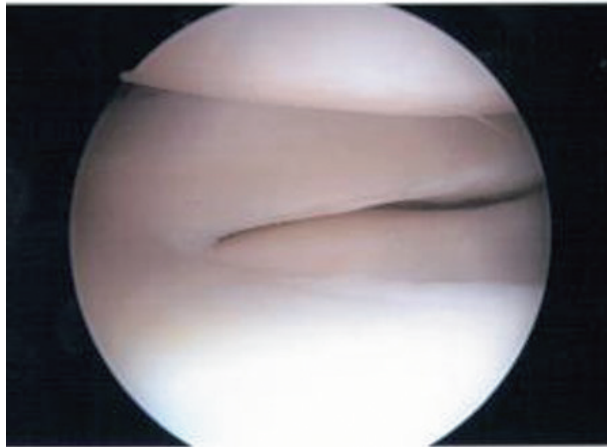
No. 14

(A 問題 45)

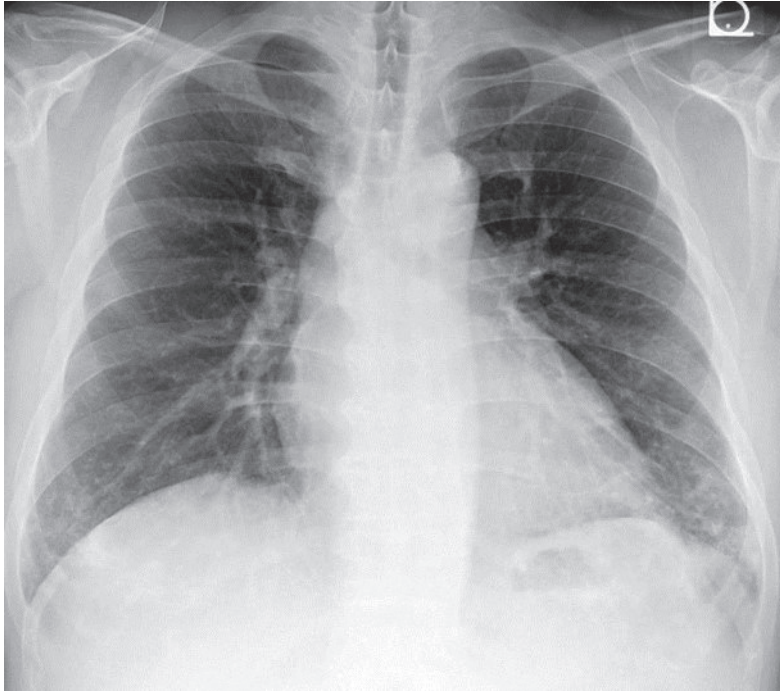
④



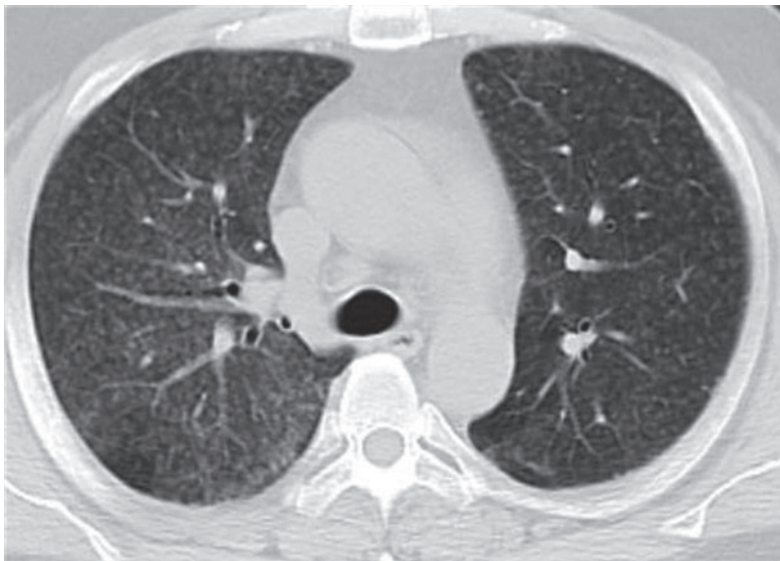
⑤



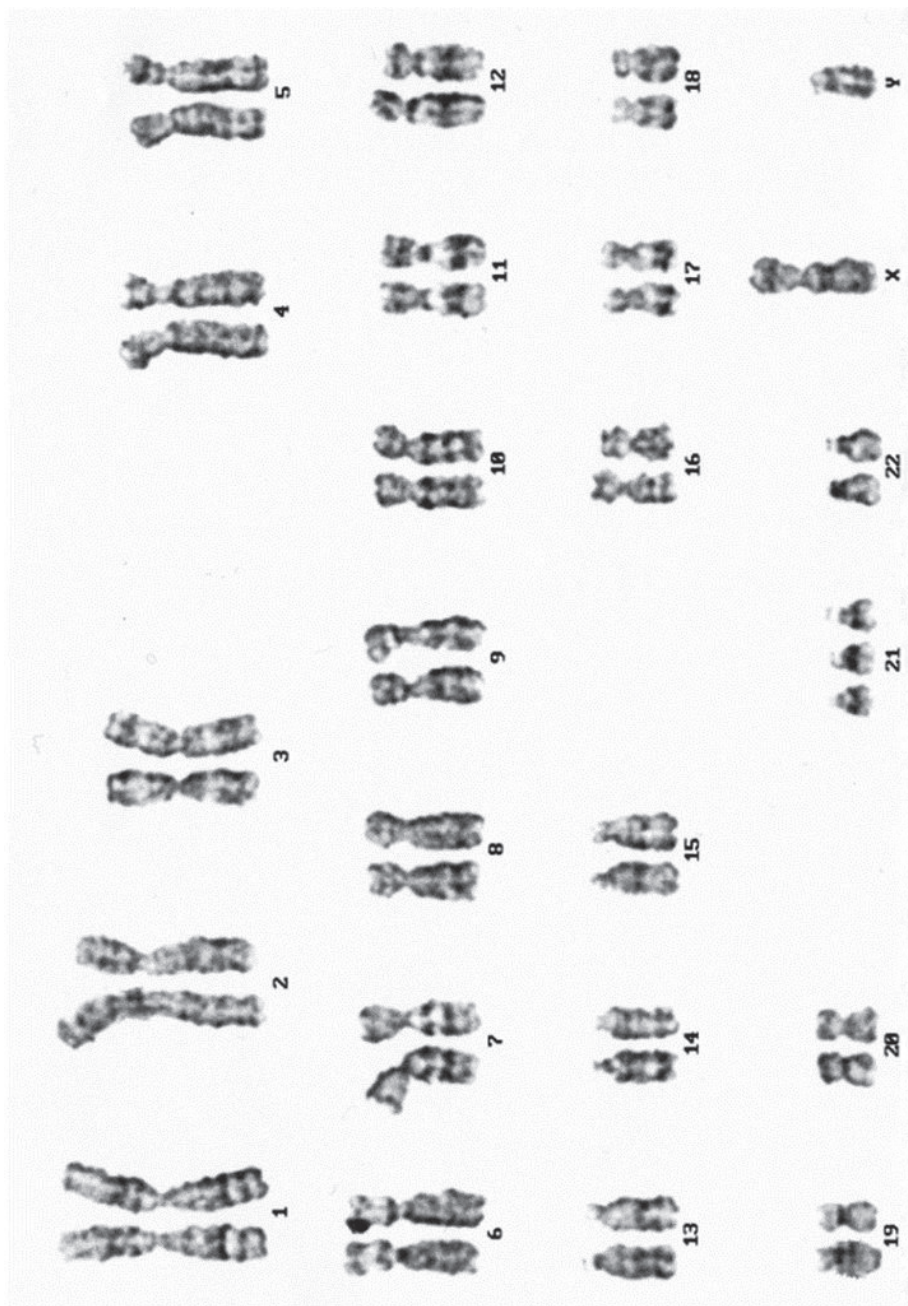
No. 15 A (A 問題 50)



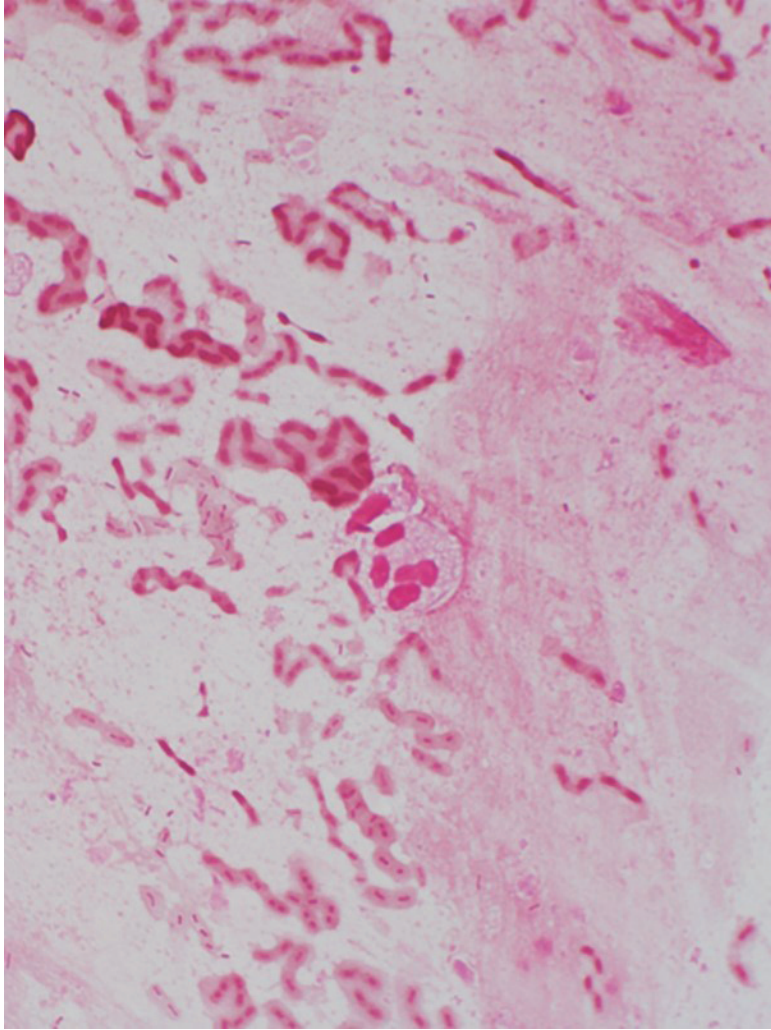
No. 15 B (A 問題 50)



No. 16 (A 問題 51)



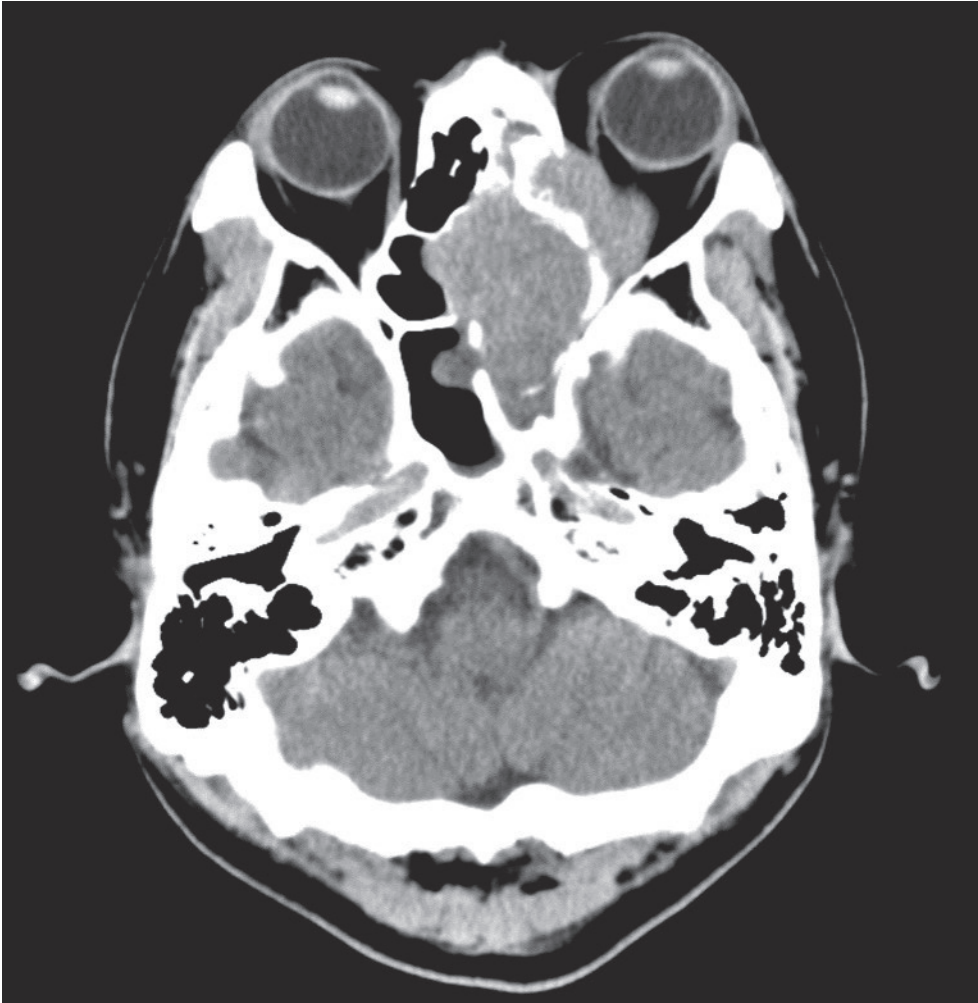
No. 17 (A 問題 53)



No. 18

(A 問題 54)





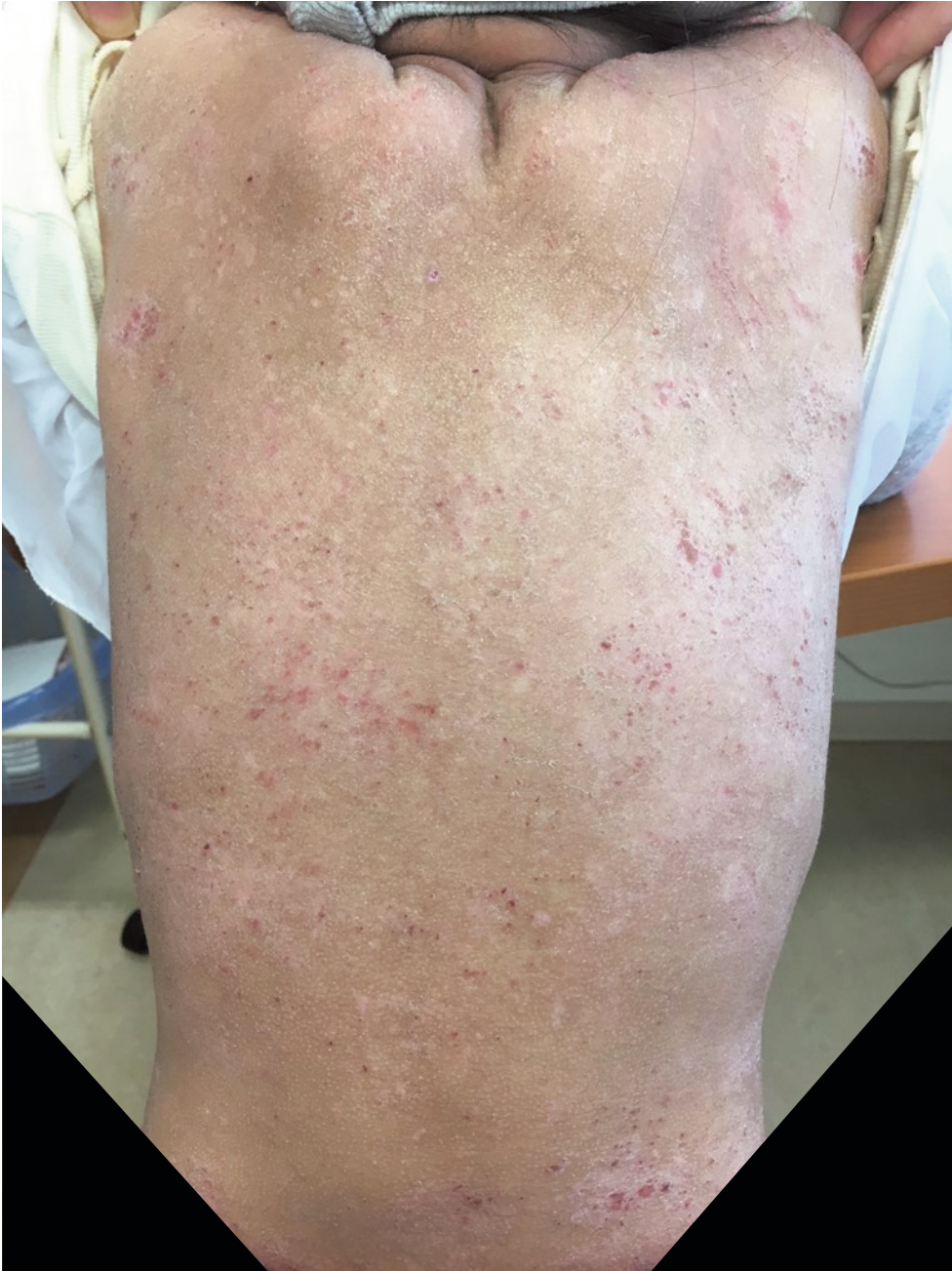
造影CT水平断像



No. 19 B (A 問題 58)



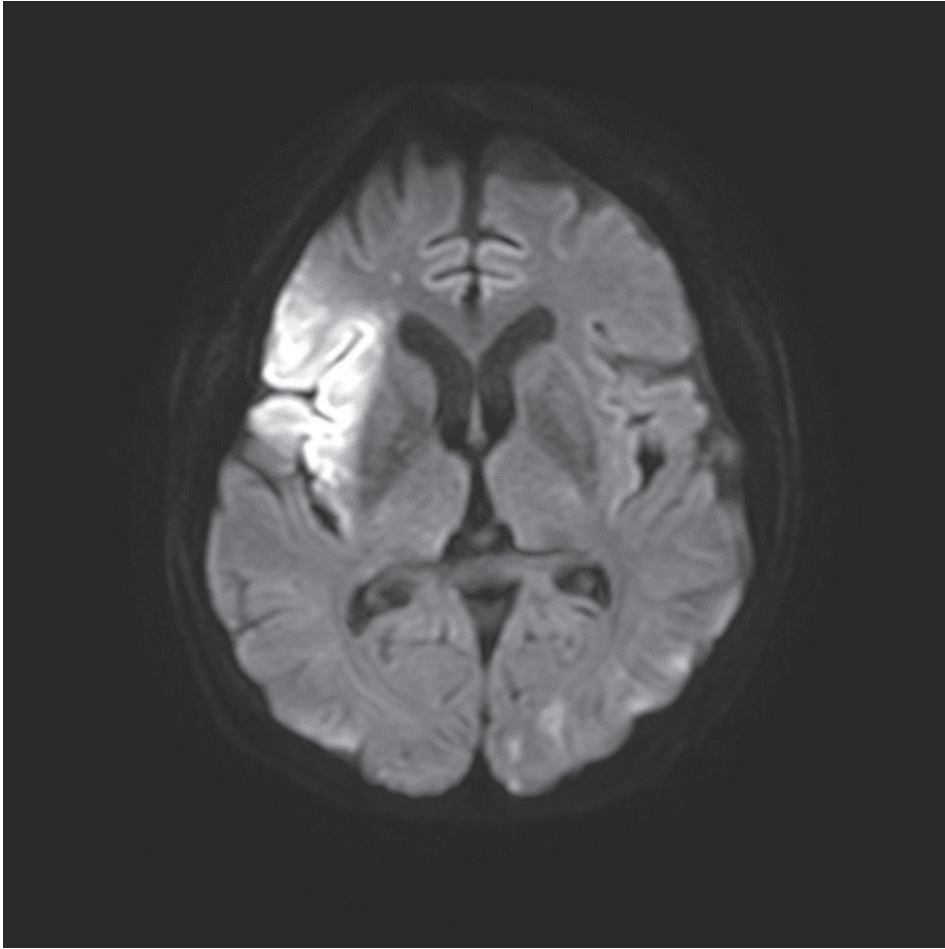
脂肪抑制造影T1強調冠状断像



No. 21

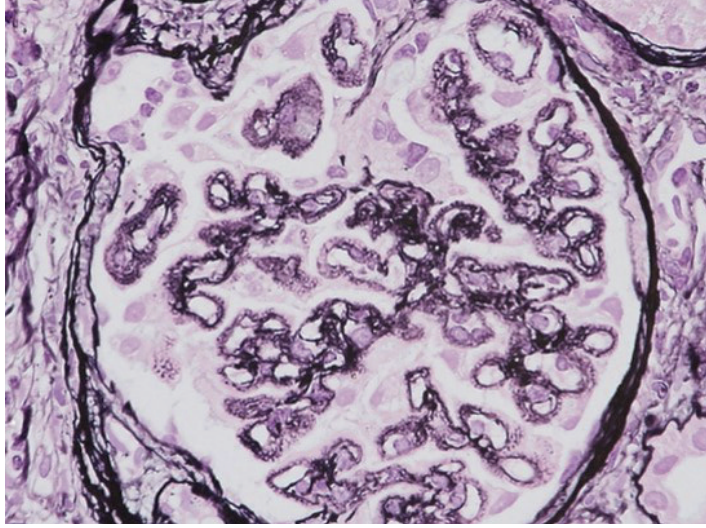
(A 問題 60)



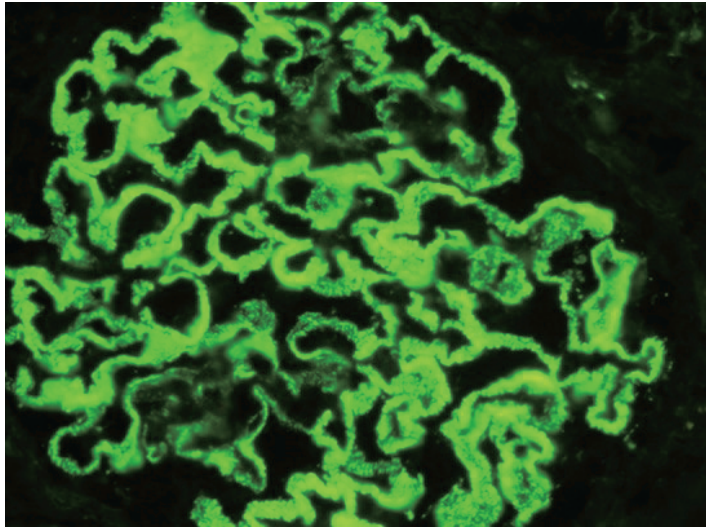


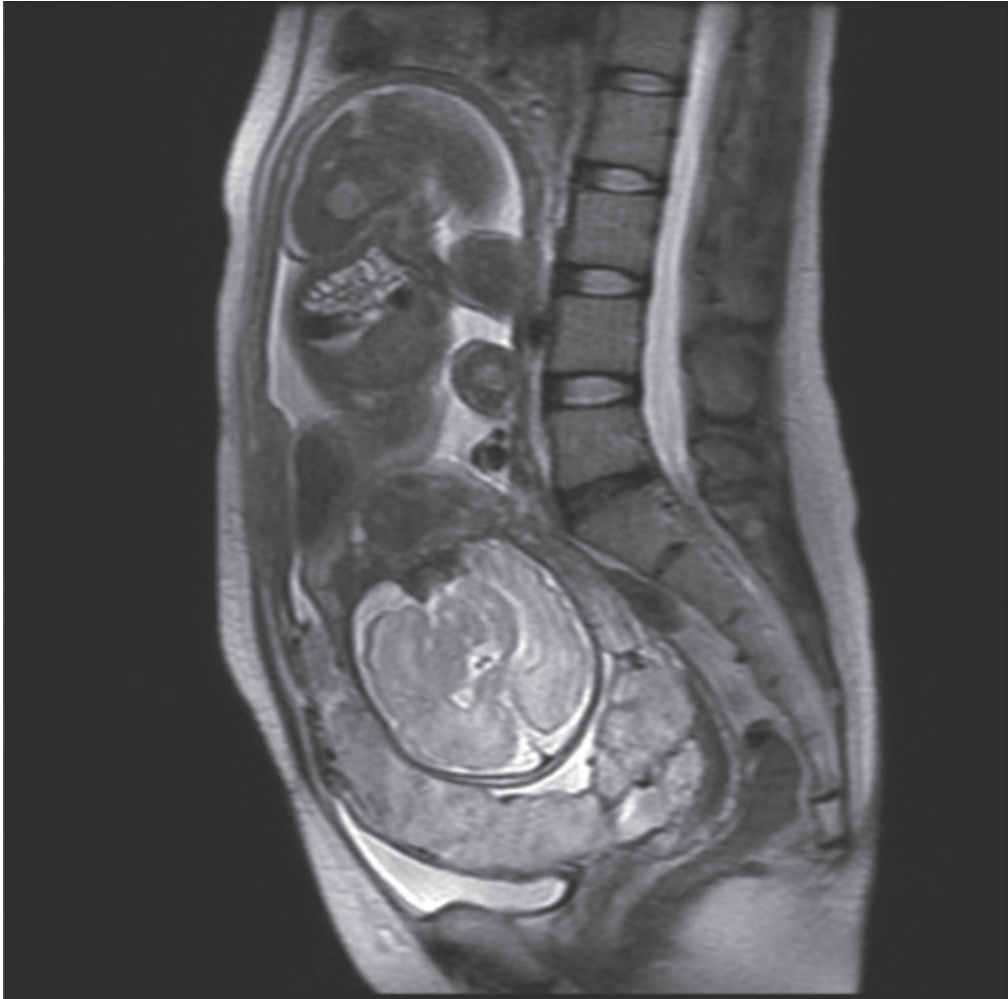
Diffusion-weighted image

No. 23 A (A 問題 62)



No. 23 B (A 問題 62)

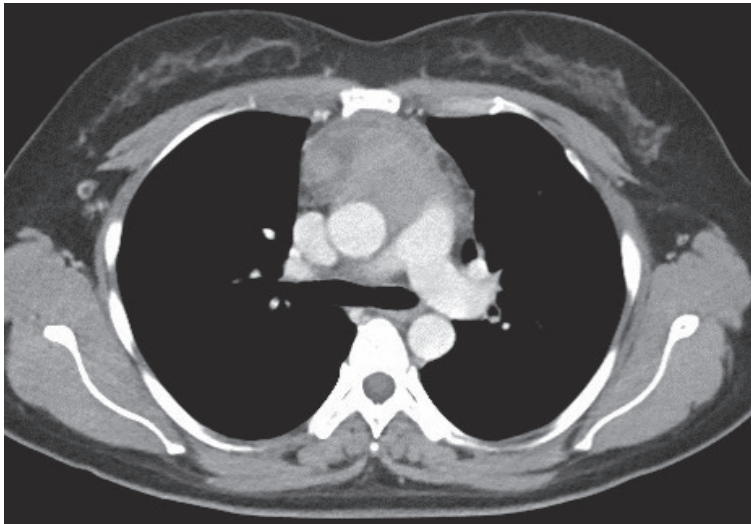




No. 25 A (A 問題 66)

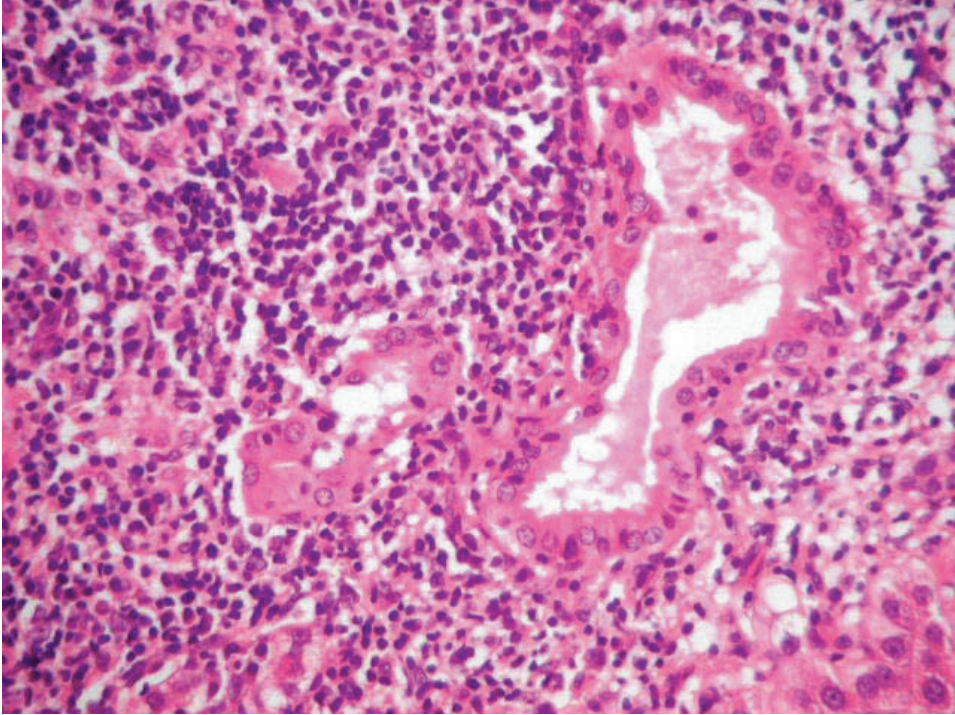


No. 25 B (A 問題 66)



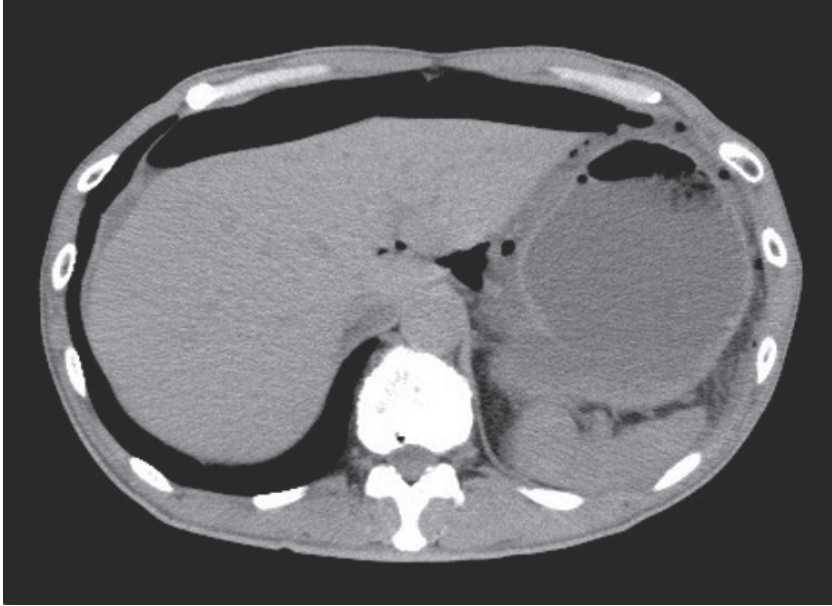
No. 26

(A 問題 67)

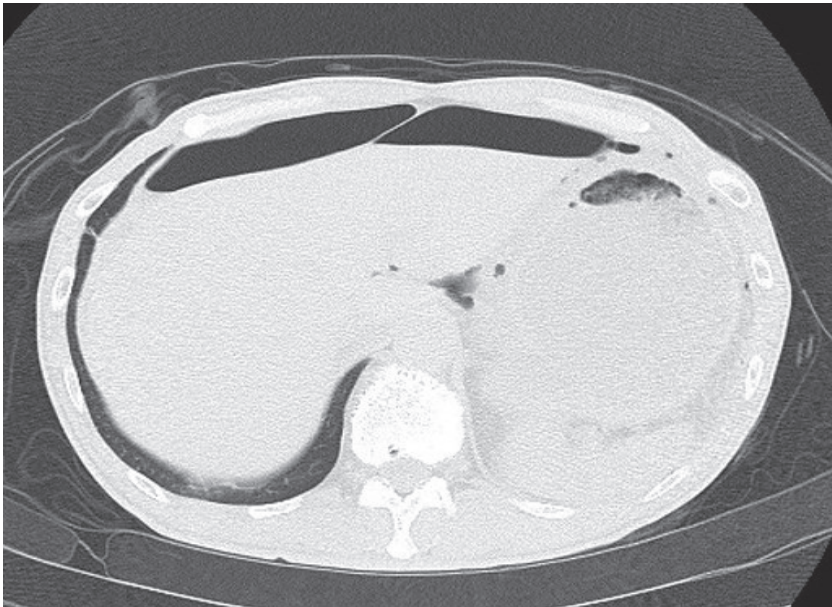




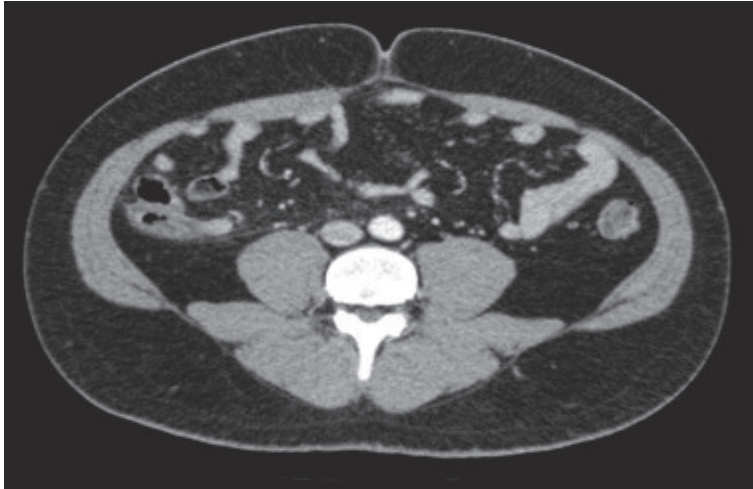
No. 27 A (A 問題72)



No. 27 B (A 問題72)



No. 28 A (A 問題74)



No. 28 B (A 問題74)

