

67

午 後

別 冊

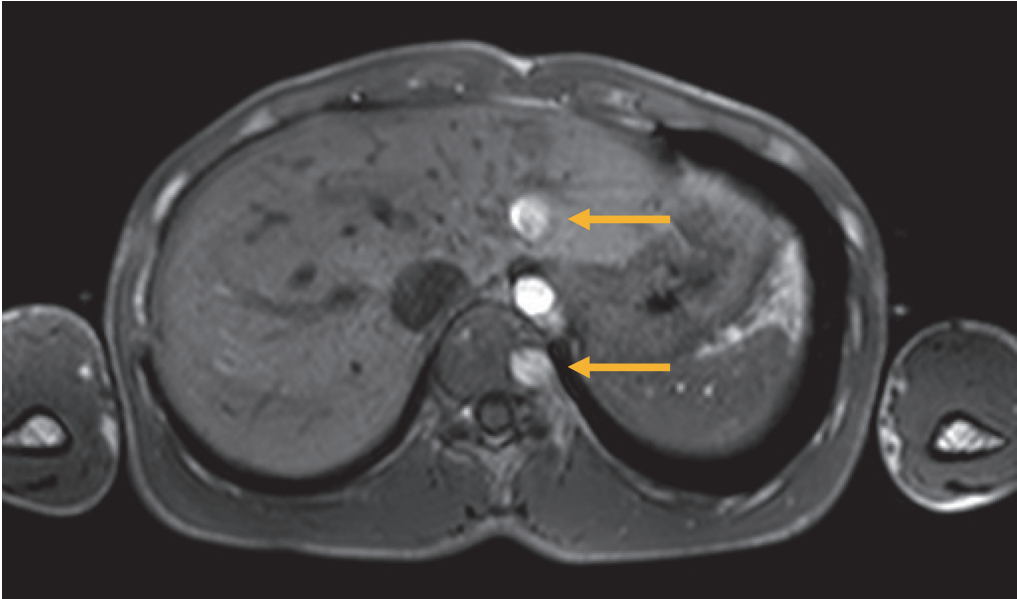






No. 1

(問題 18)



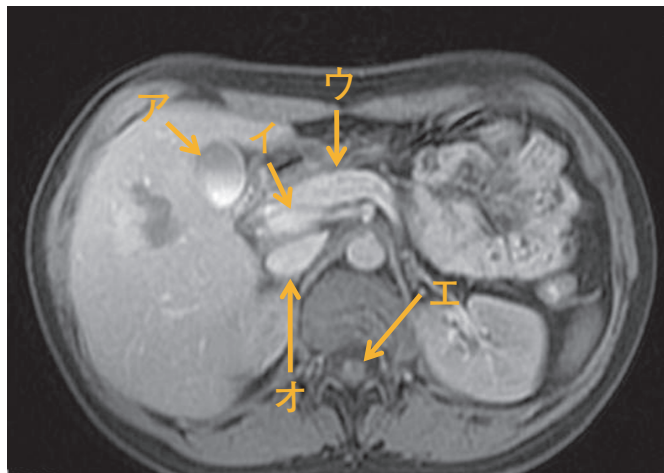
No. 2

(問題 20)

T<sub>2</sub> 強調像

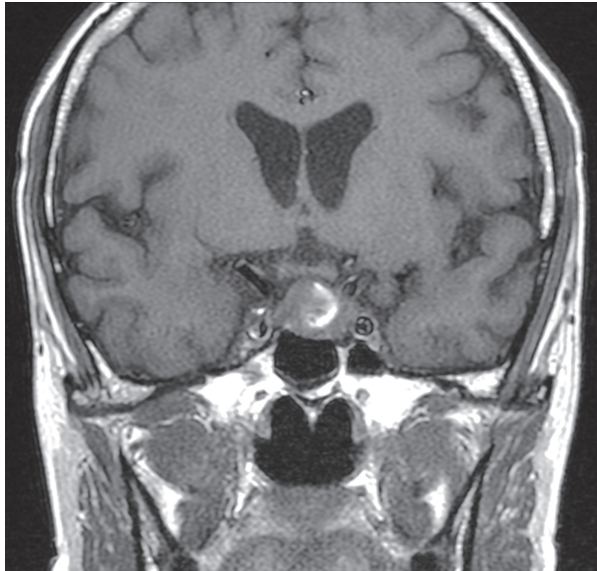


Gd-DTPA による造影 T<sub>1</sub> 強調像平衡相



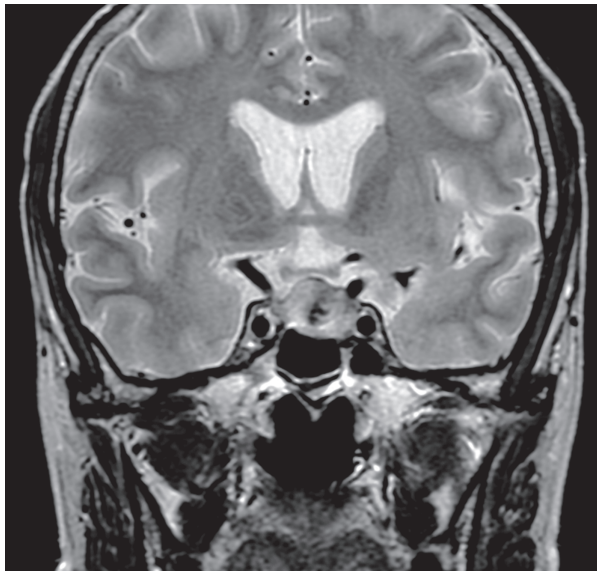
No. 3 A (問題 21)

T<sub>1</sub> 強調冠状断像



No. 3 B (問題 21)

T<sub>2</sub> 強調冠状断像

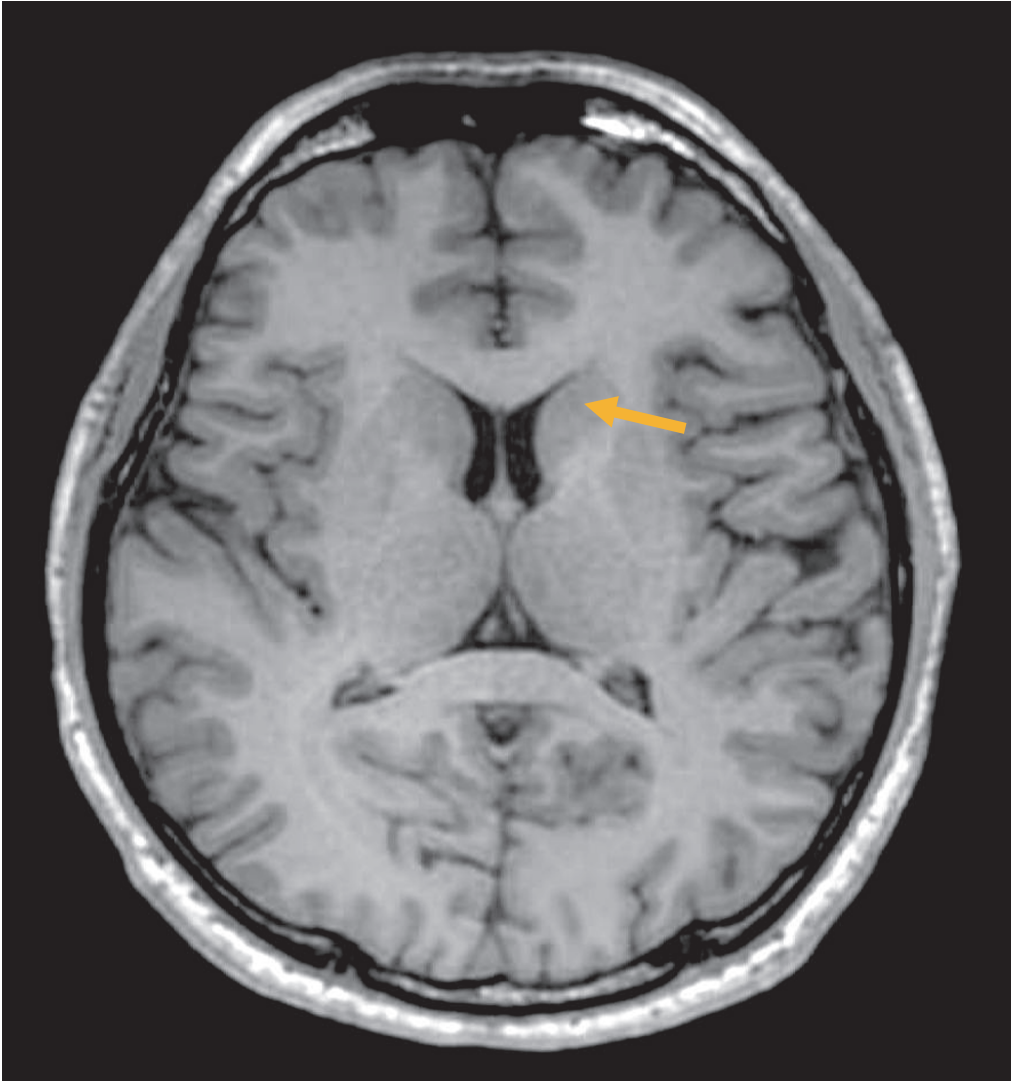


余 白



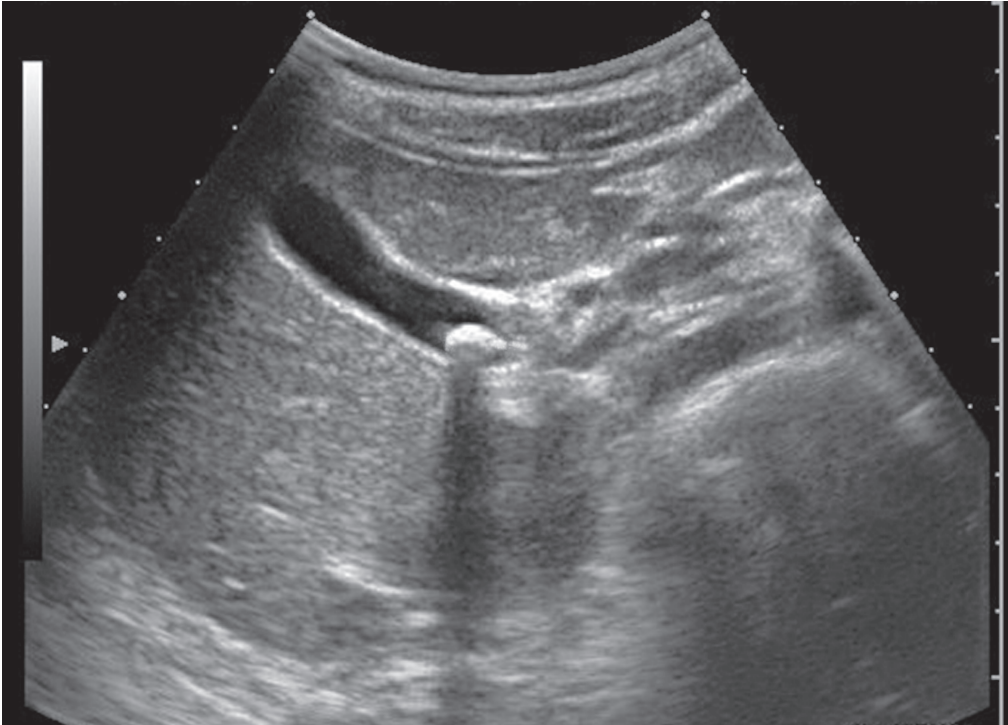
No. 4

(問題 22)



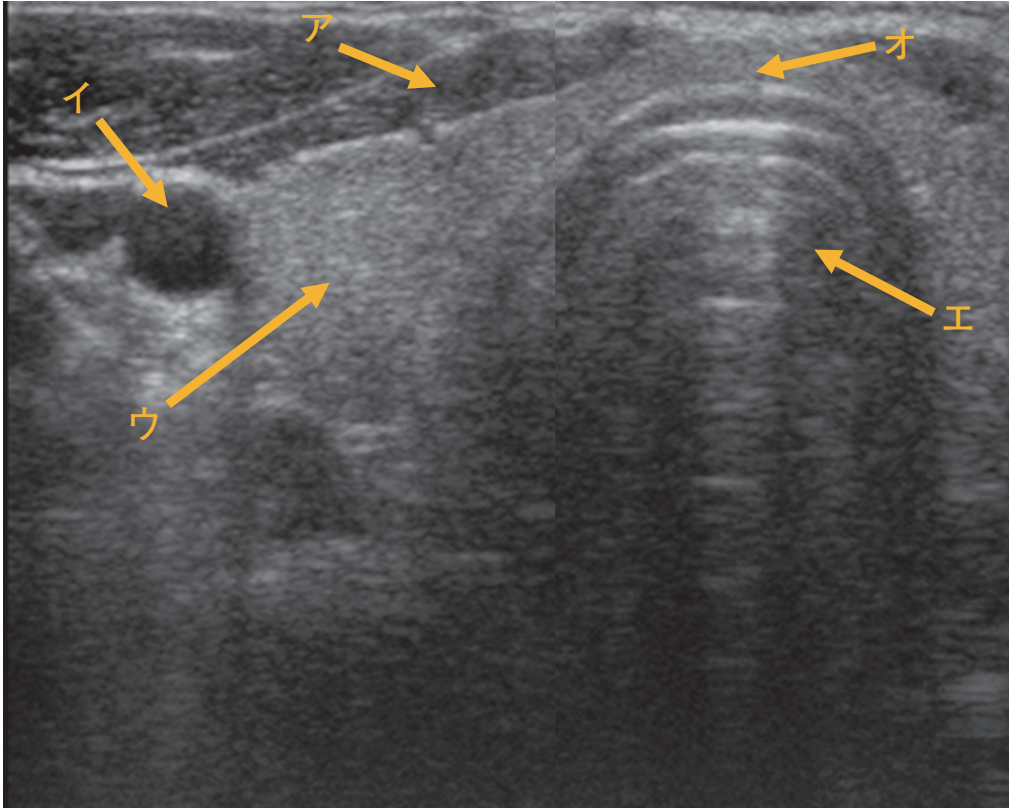
No. 5

(問題 23)



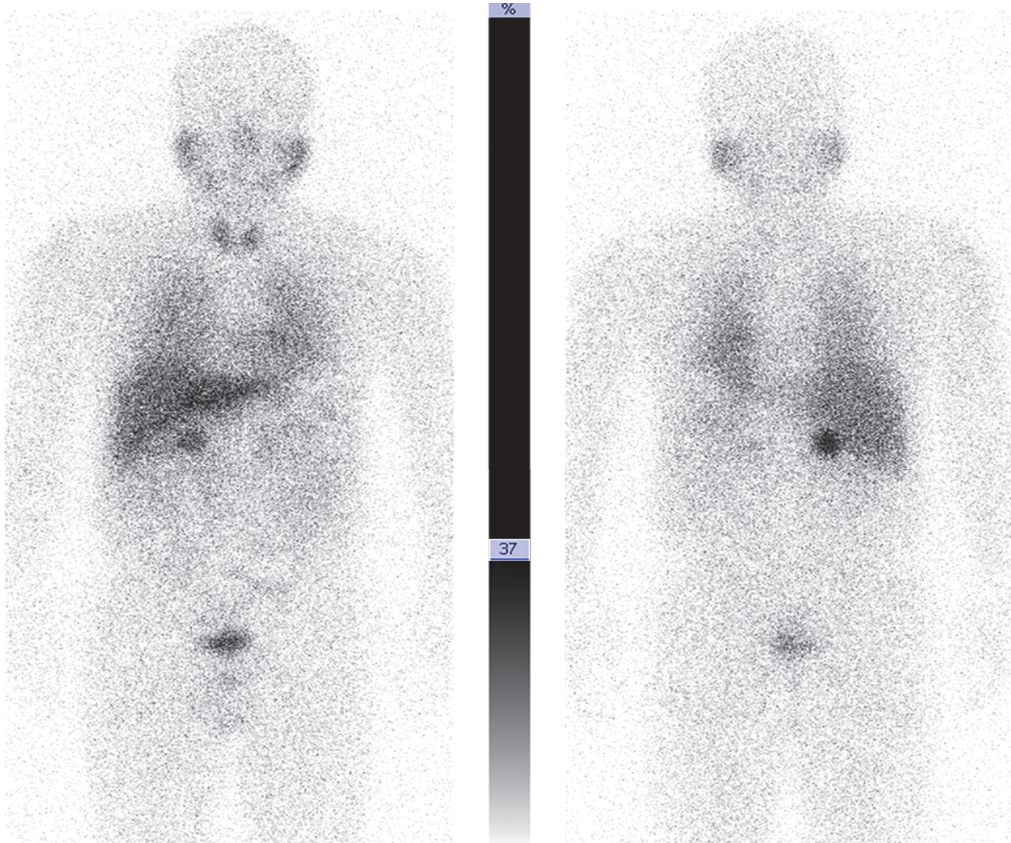
No. 6

(問題 24)



No. 7

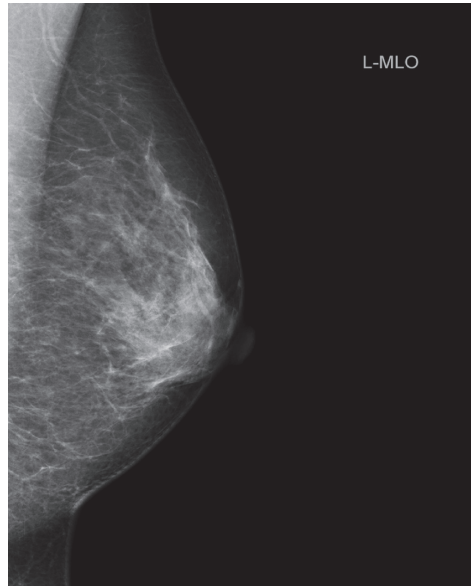
(問題 32)



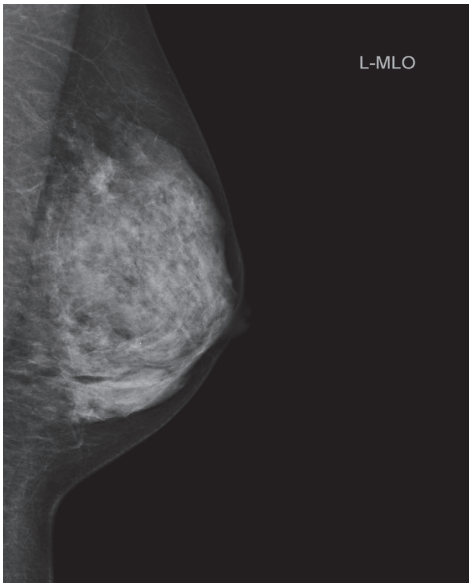
No. 8 A  
(問題 90)



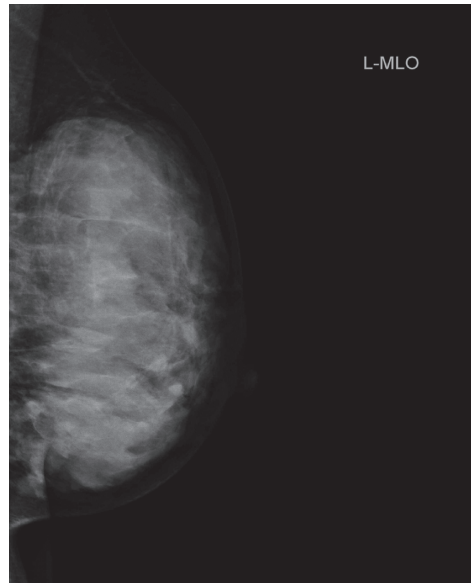
No. 8 B  
(問題 90)

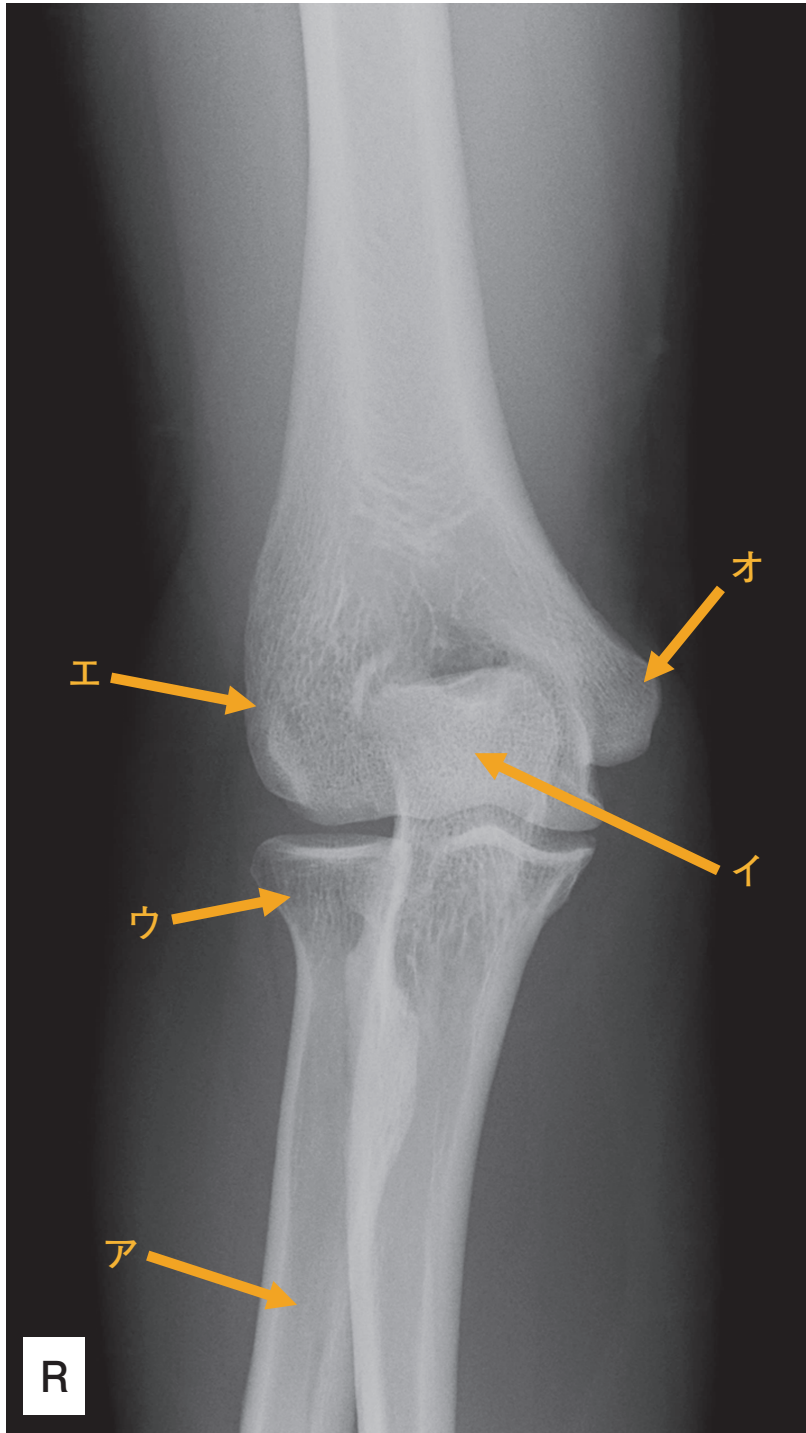


No. 8 C  
(問題 90)



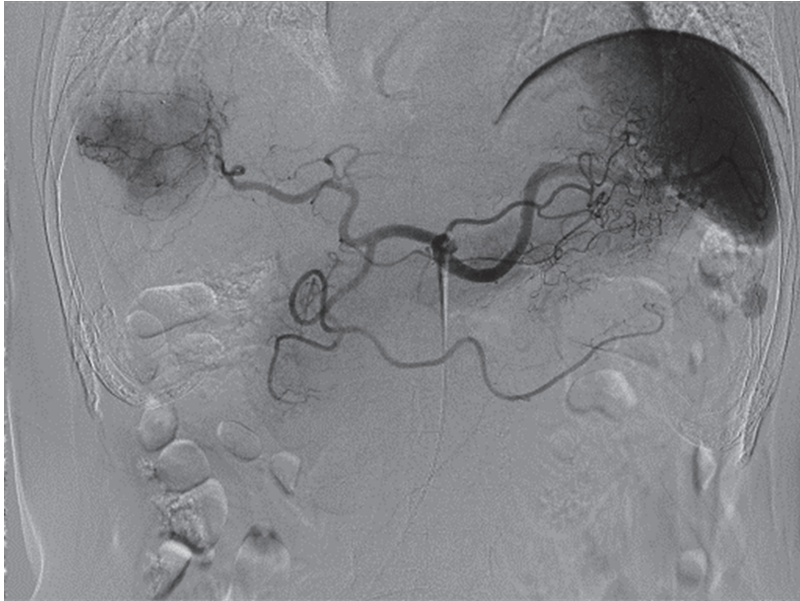
No. 8 D  
(問題 90)





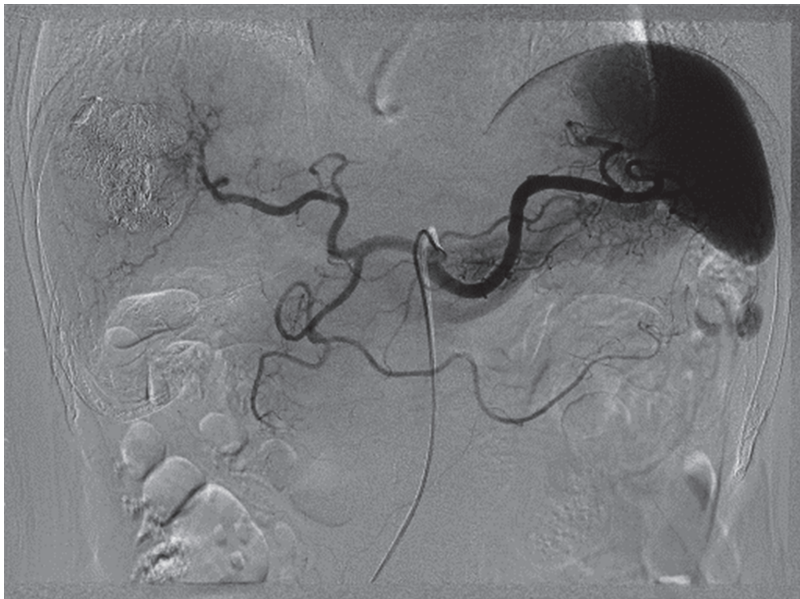
No. 10 A

(問題 92)



No. 10 B

(問題 92)



No. 11

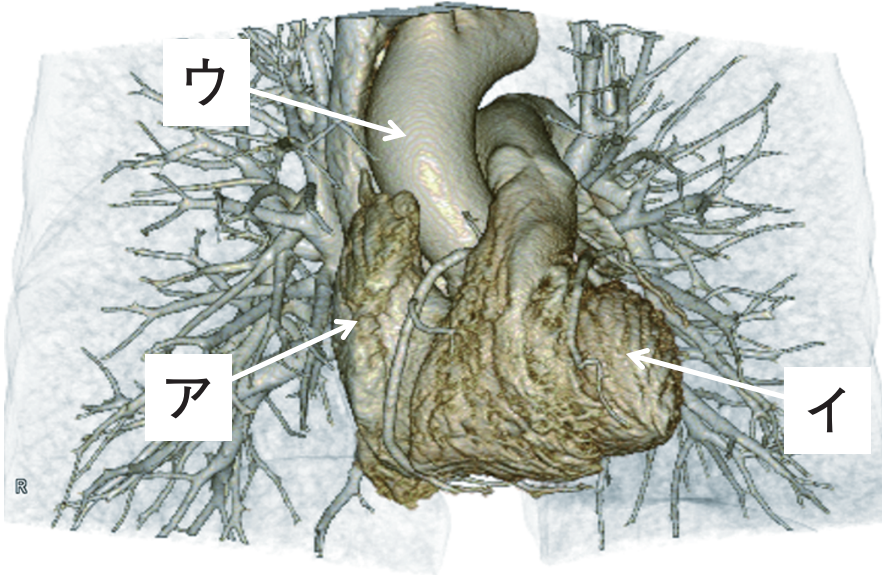
(問題 93)





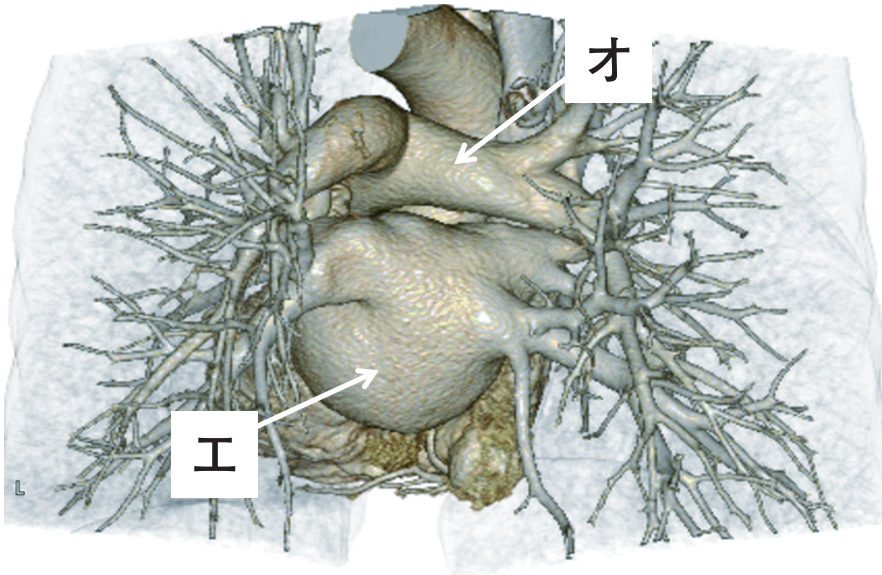
No. 12 A

(問題 94)



No. 12 B

(問題 94)



No. 13

(問題 97)

