

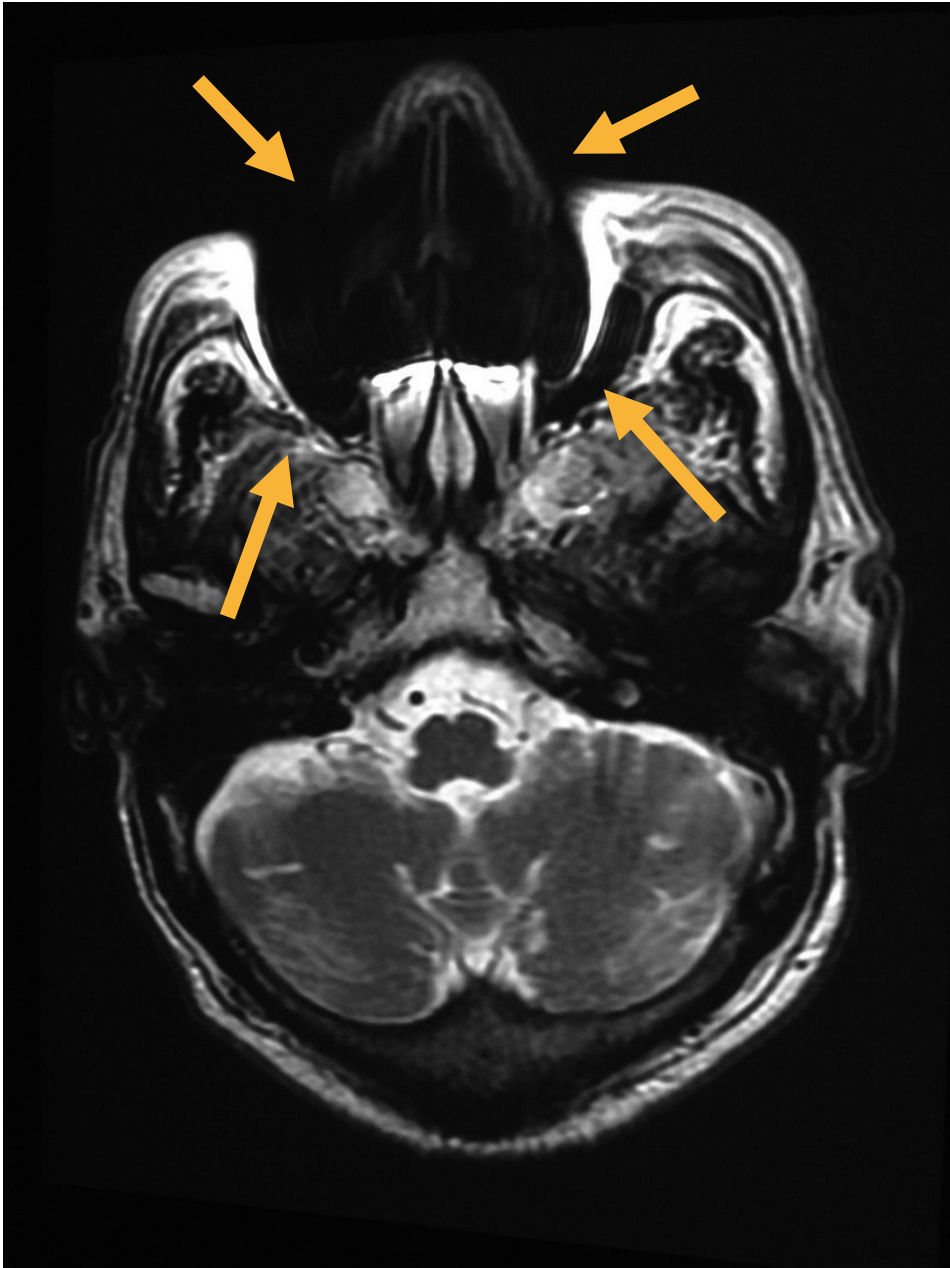
66

午 前

別 冊

No. 1

(問題 29)



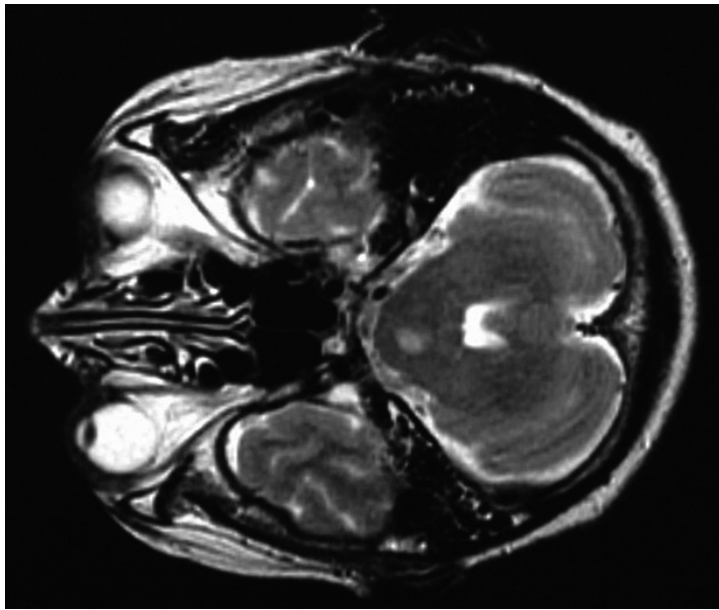
No. 2

(問題 40)

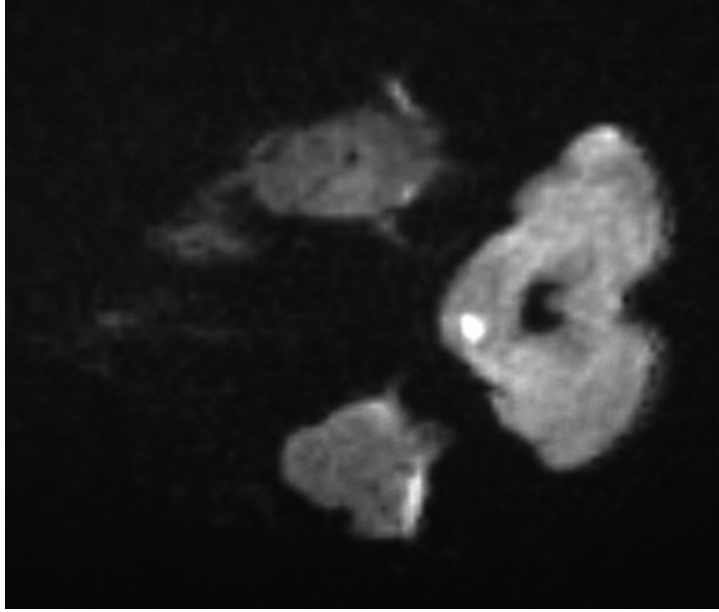


No. 3 (問題 41)

T₂ 強調画像

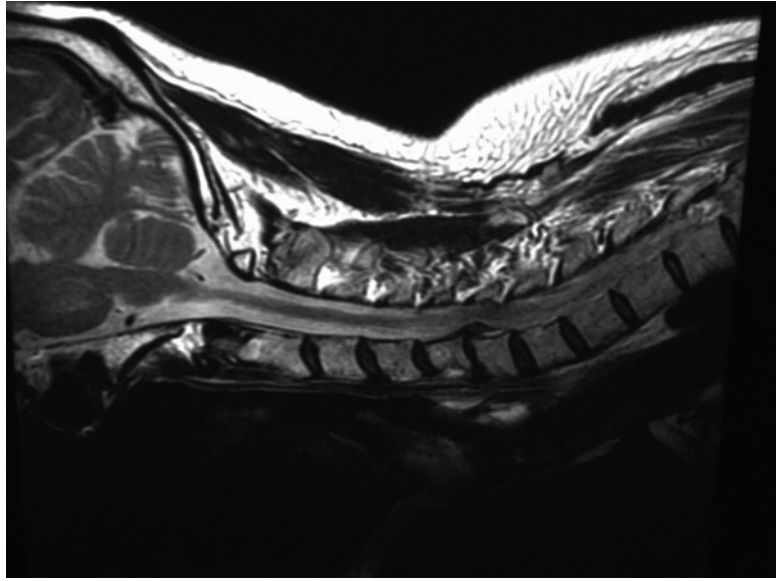
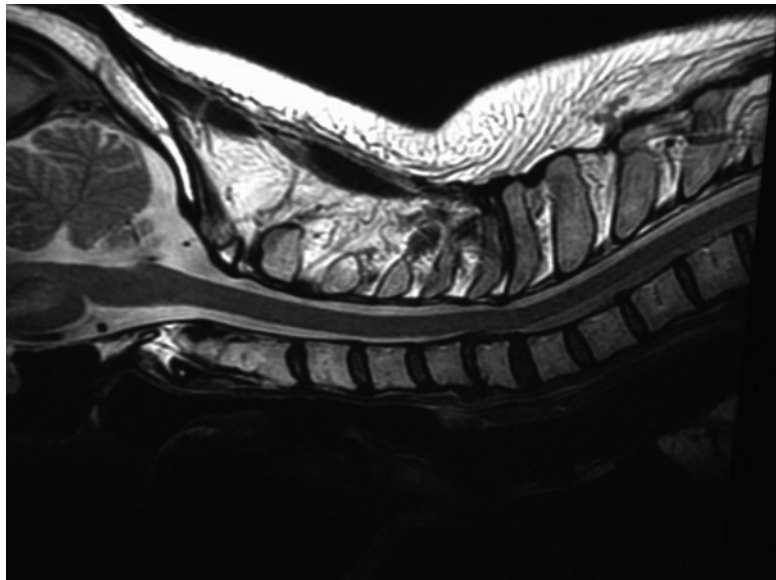


拡散強調画像



No. 4 (問題 42)

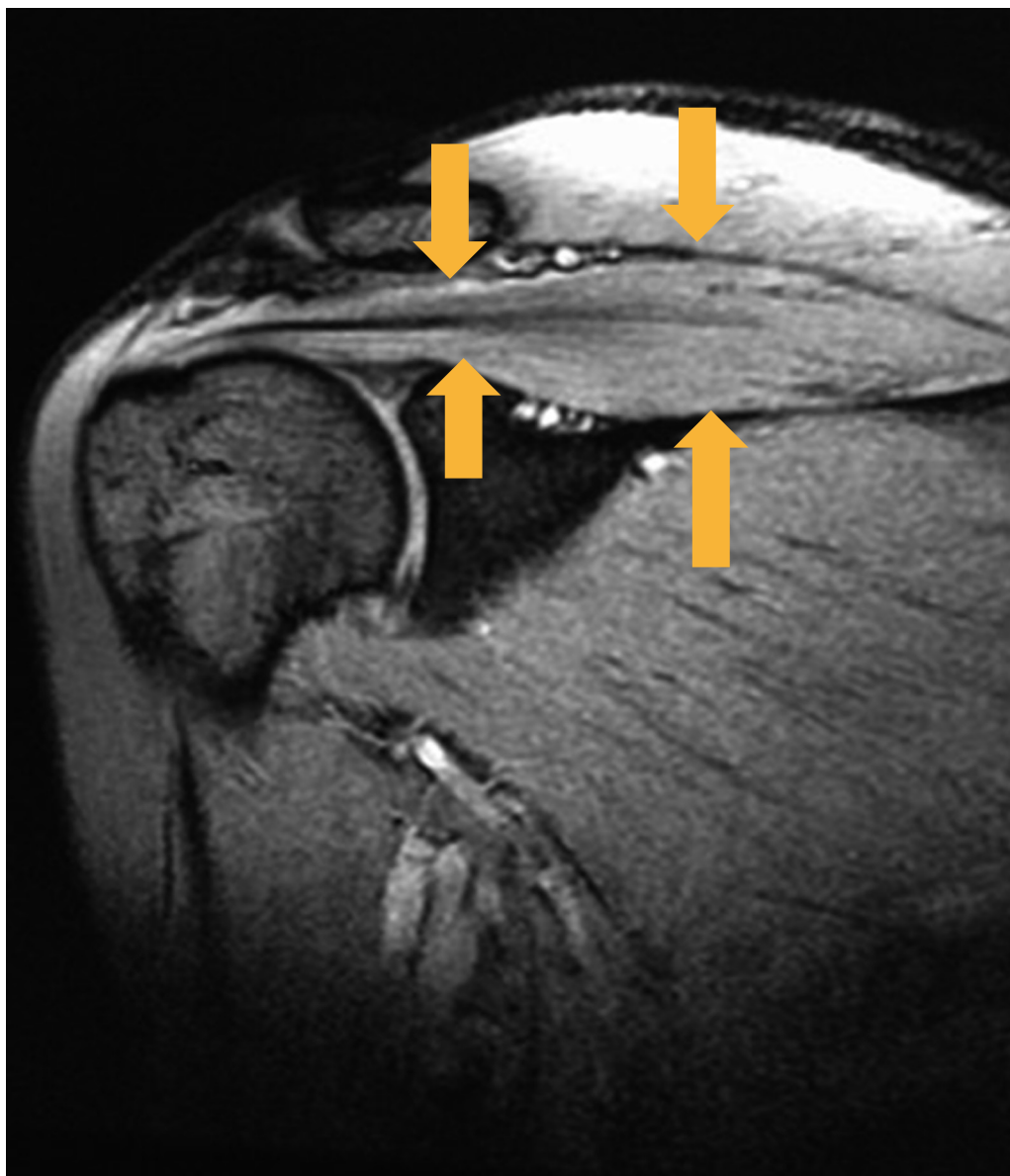
連続矢状断像



No. 5

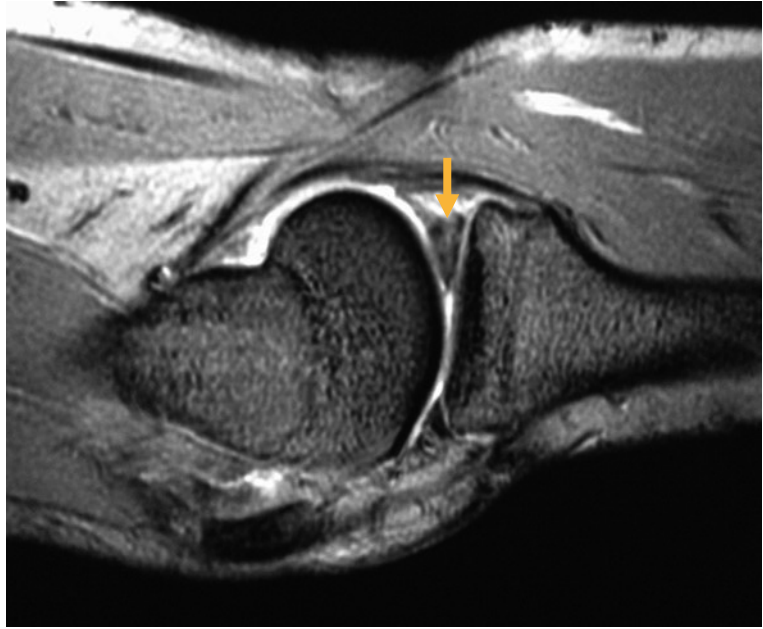
(問題 43)

斜め冠状断像

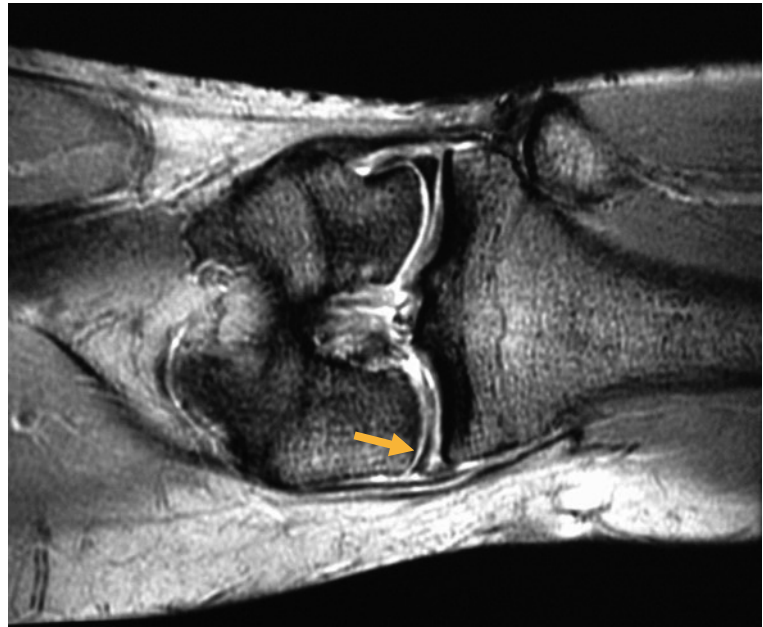


No. 6 (問題 44)

矢状断像

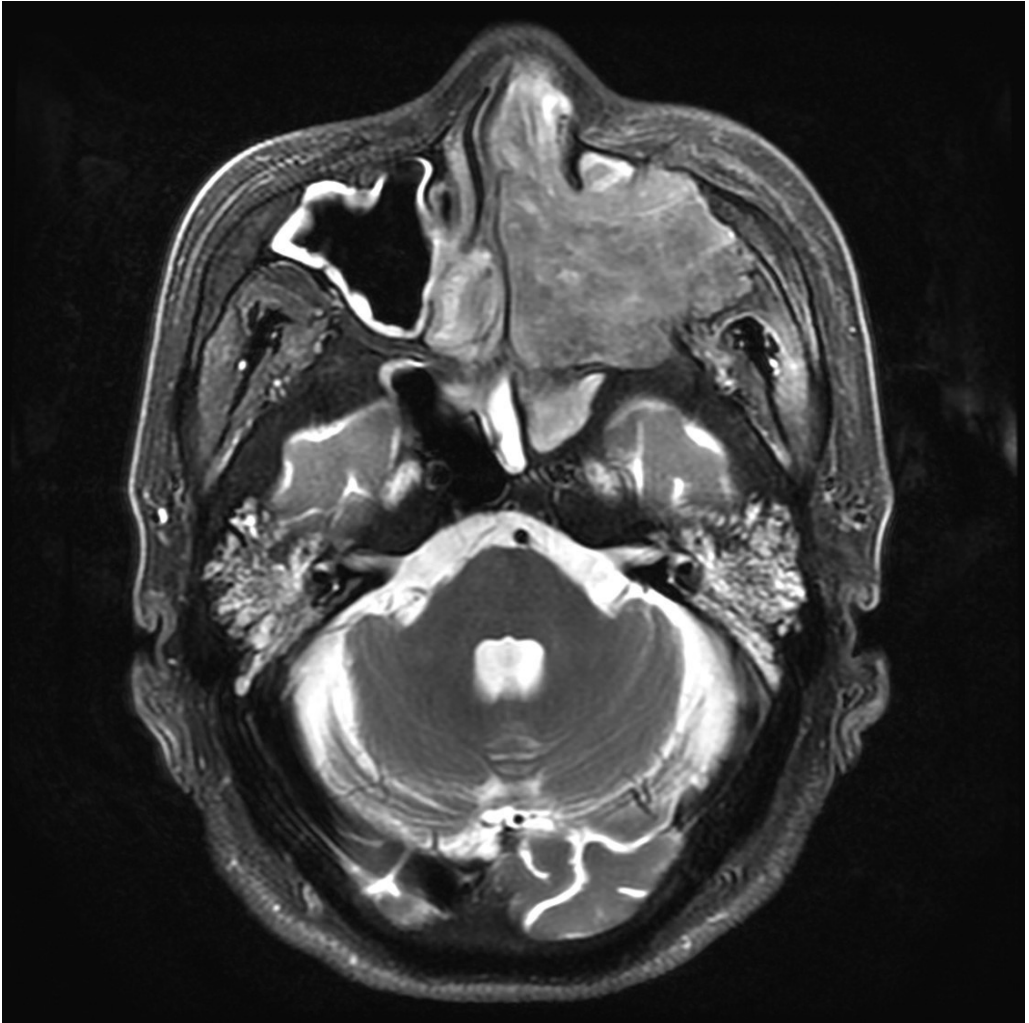


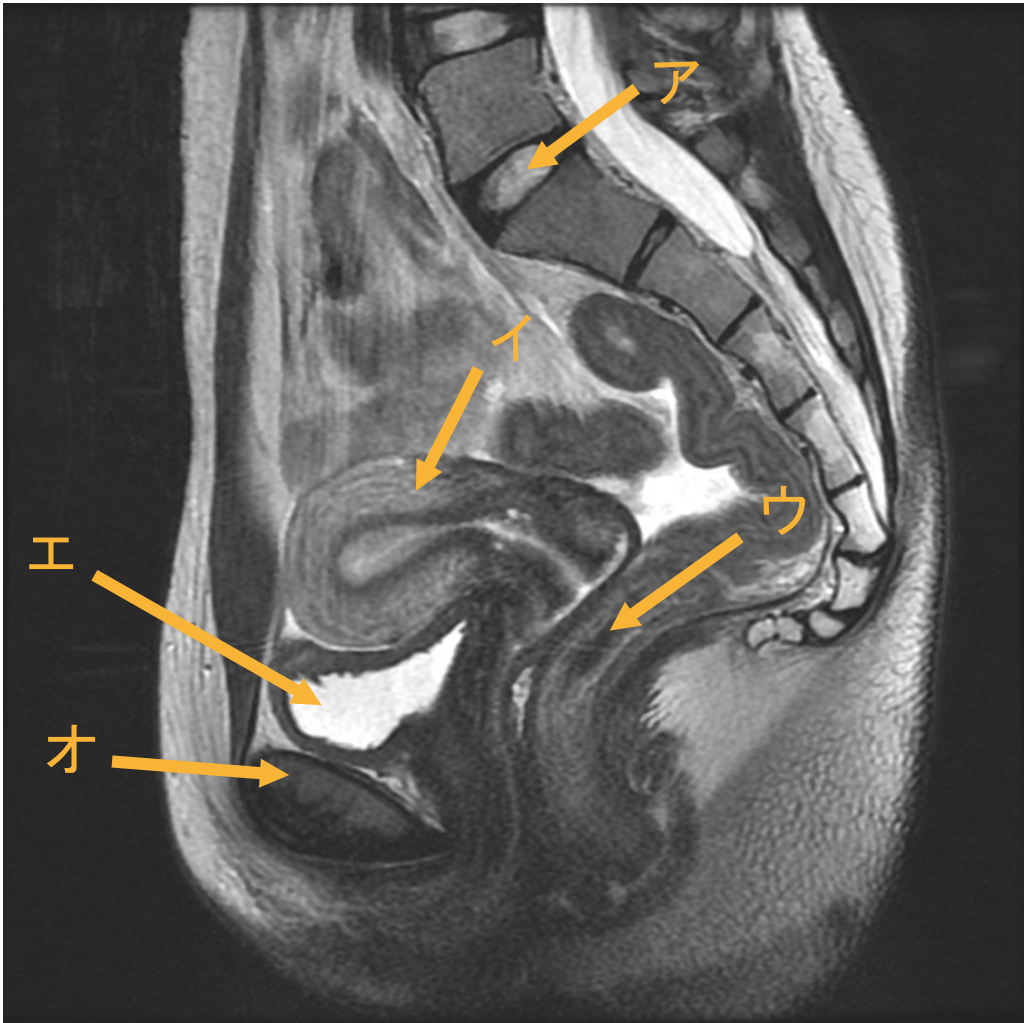
冠状断像

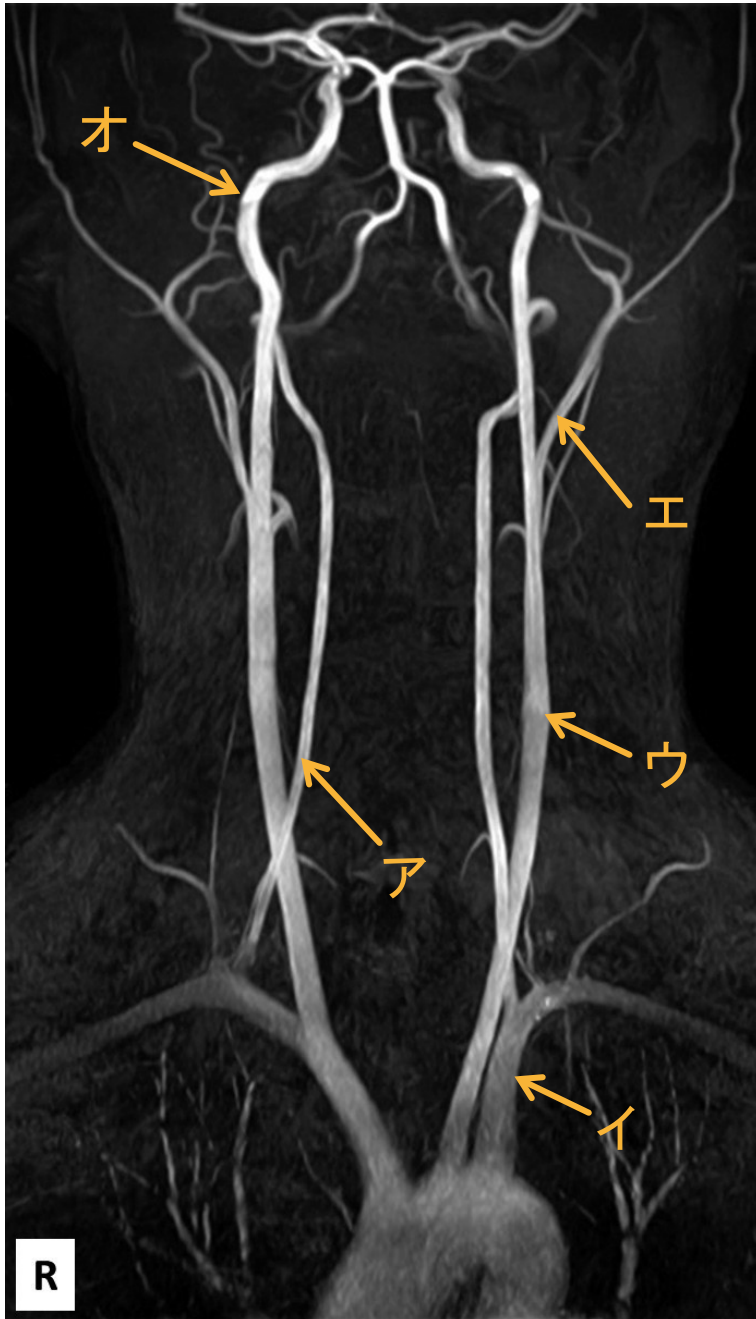


No. 7

(問題 45)

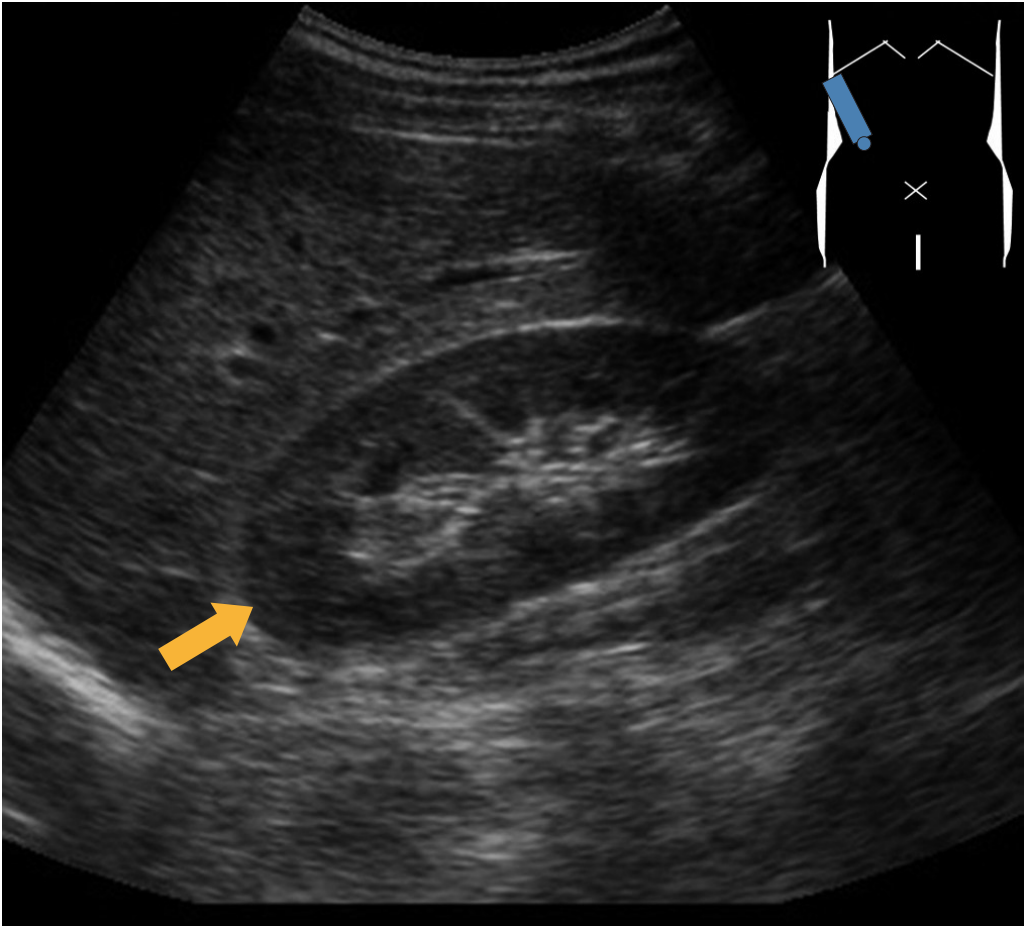






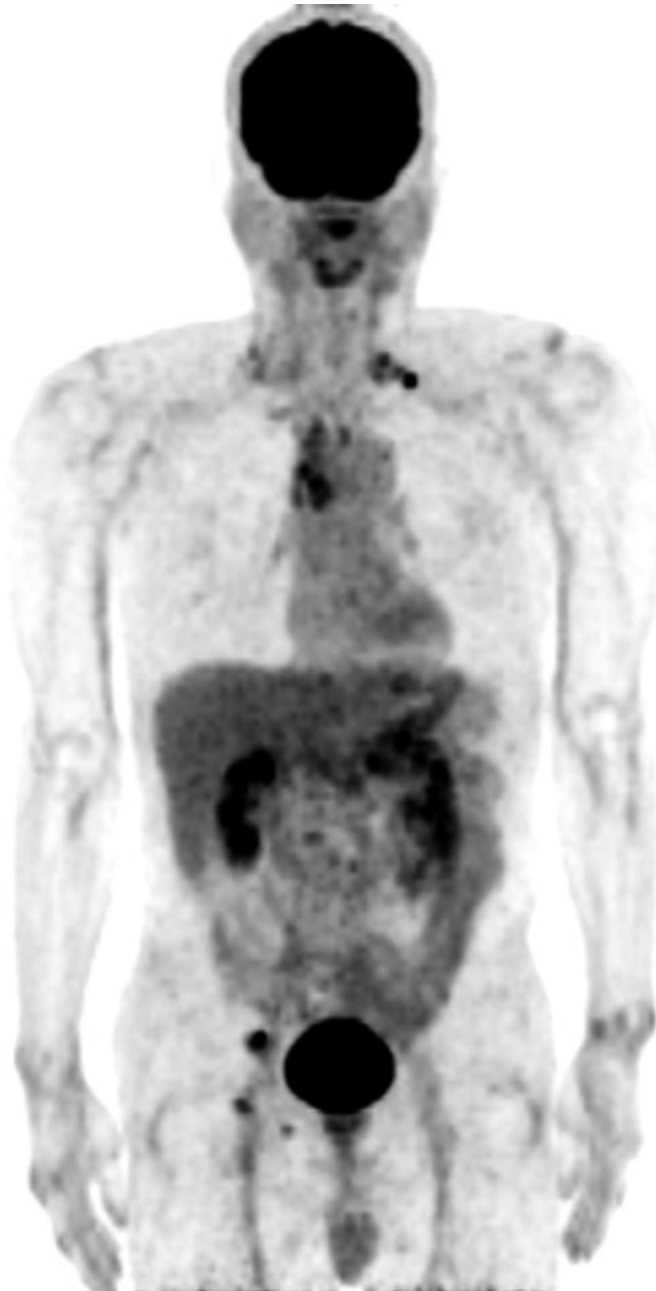
No. 10

(問題 48)



No. 11

(問題 66)



No. 12

(問題 86)



No. 13

(問題 87)



