

参考資料-5

PCB全化合物の構造式等とクロマトグラムの例（旧マニュアルより抜粋）

表-1. 1塩化ビフェニルの構造式

塩素数	同族体	No.	IUPAC#	BZ#	ortho	CAS No.	構造式
1	Mono	1	1	<---	mono-ortho	2051-60-7	2 - Mono chlorobiphenyl
1	Mono	2	2	<---	non-ortho	2051-61-8	3 - Mono chlorobiphenyl
1	Mono	3	3	<---	non-ortho	2051-62-9	4 - Mono chlorobiphenyl

表-2. 2塩化ビフェニルの構造式

塩素数	同族体	No.	IUPAC#	BZ#	ortho	CAS No.	構造式
2	Di	1	4	<---	di-ortho	13029-08-8	2,2' - Di chlorobiphenyl
2	Di	2	5	<---	mono-ortho	16605-91-7	2,3 - Di chlorobiphenyl
2	Di	3	6	<---	mono-ortho	25569-80-6	2,3' - Di chlorobiphenyl
2	Di	4	7	<---	mono-ortho	33284-50-3	2,4 - Di chlorobiphenyl
2	Di	5	8	<---	mono-ortho	34883-43-7	2,4' - Di chlorobiphenyl
2	Di	6	9	<---	mono-ortho	34883-39-1	2,5 - Di chlorobiphenyl
2	Di	7	10	<---	di-ortho	33146-45-1	2,6 - Di chlorobiphenyl
2	Di	8	11	<---	non-ortho	2050-67-1	3,3' - Di chlorobiphenyl
2	Di	9	12	<---	non-ortho	2974-92-7	3,4 - Di chlorobiphenyl
2	Di	10	13	<---	non-ortho	2974-90-5	3,4' - Di chlorobiphenyl
2	Di	11	14	<---	non-ortho	34883-41-5	3,5 - Di chlorobiphenyl
2	Di	12	15	<---	non-ortho	2050-68-2	4,4' - Di chlorobiphenyl

表-3. 3塩化ビフェニルの構造式

塩素数	同族体	No.	IUPAC#	BZ#	ortho	CAS No.	構造式
3	Tri	1	16	<---	di-ortho	38444-78-9	2,2',3 - Tri chlorobiphenyl
3	Tri	2	17	<---	di-ortho	37680-66-3	2,2',4 - Tri chlorobiphenyl
3	Tri	3	18	<---	di-ortho	37680-65-2	2,2',5 - Tri chlorobiphenyl
3	Tri	4	19	<---	tri-ortho	38444-73-4	2,2',6 - Tri chlorobiphenyl
3	Tri	5	20	<---	mono-ortho	38444-84-7	2,3,3' - Tri chlorobiphenyl
3	Tri	6	21	<---	mono-ortho	55702-46-0	2,3,4 - Tri chlorobiphenyl
3	Tri	7	22	<---	mono-ortho	38444-85-8	2,3,4' - Tri chlorobiphenyl
3	Tri	8	23	<---	mono-ortho	55720-44-0	2,3,5 - Tri chlorobiphenyl
3	Tri	9	24	<---	di-ortho	55702-45-9	2,3,6 - Tri chlorobiphenyl
3	Tri	10	25	<---	mono-ortho	55712-37-3	2,3',4 - Tri chlorobiphenyl
3	Tri	11	26	<---	mono-ortho	38444-81-4	2,3',5 - Tri chlorobiphenyl
3	Tri	12	27	<---	di-ortho	38444-76-7	2,3',6 - Tri chlorobiphenyl
3	Tri	13	28	<---	mono-ortho	7012-37-5	2,4,4' - Tri chlorobiphenyl
3	Tri	14	29	<---	mono-ortho	15862-07-4	2,4,5 - Tri chlorobiphenyl
3	Tri	15	30	<---	di-ortho	35693-92-6	2,4,6 - Tri chlorobiphenyl
3	Tri	16	31	<---	mono-ortho	16606-02-3	2,4',5 - Tri chlorobiphenyl
3	Tri	17	32	<---	di-ortho	38444-77-4	2,4',6 - Tri chlorobiphenyl
3	Tri	18	33	<---	mono-ortho	38444-86-9	2',3,4 - Tri chlorobiphenyl
3	Tri	19	34	<---	mono-ortho	37680-68-5	2',3,5 - Tri chlorobiphenyl
3	Tri	20	35	<---	non-ortho	37680-69-6	3,3',4 - Tri chlorobiphenyl
3	Tri	21	36	<---	non-ortho	38444-87-0	3,3',5 - Tri chlorobiphenyl
3	Tri	22	37	<---	non-ortho	38444-90-5	3,4,4' - Tri chlorobiphenyl
3	Tri	23	38	<---	non-ortho	53555-66-1	3,4,5 - Tri chlorobiphenyl
3	Tri	24	39	<---	non-ortho	38444-88-1	3,4',5 - Tri chlorobiphenyl

表-4. 4塩化ビフェニルの構造式

塩素数	同族体	No.	IUPAC#	BZ#	ortho	CAS No.	構造式
4	Tetra	1	40	<---	di-ortho	38444-93-8	2,2',3,3' - Tetra chlorobiphenyl
4	Tetra	2	41	<---	di-ortho	52663-59-9	2,2',3,4 - Tetra chlorobiphenyl
4	Tetra	3	42	<---	di-ortho	36559-22-5	2,2',3,4' - Tetra chlorobiphenyl
4	Tetra	4	43	<---	di-ortho	70362-46-8	2,2',3,5 - Tetra chlorobiphenyl
4	Tetra	5	44	<---	di-ortho	41464-39-5	2,2',3,5' - Tetra chlorobiphenyl
4	Tetra	6	45	<---	tri-ortho	70362-45-7	2,2',3,6 - Tetra chlorobiphenyl
4	Tetra	7	46	<---	tri-ortho	41464-47-5	2,2',3,6' - Tetra chlorobiphenyl
4	Tetra	8	47	<---	di-ortho	2437-79-8	2,2',4,4' - Tetra chlorobiphenyl
4	Tetra	9	48	<---	di-ortho	70362-47-9	2,2',4,5 - Tetra chlorobiphenyl
4	Tetra	10	49	<---	di-ortho	41464-40-8	2,2',4,5' - Tetra chlorobiphenyl
4	Tetra	11	50	<---	tri-ortho	62796-65-0	2,2',4,6 - Tetra chlorobiphenyl
4	Tetra	12	51	<---	tri-ortho	68194-04-7	2,2',4,6' - Tetra chlorobiphenyl
4	Tetra	13	52	<---	di-ortho	35693-99-3	2,2',5,5' - Tetra chlorobiphenyl
4	Tetra	14	53	<---	tri-ortho	41464-41-9	2,2',5,6' - Tetra chlorobiphenyl
4	Tetra	15	54	<---	tetra-ortho	15968-05-5	2,2',6,6' - Tetra chlorobiphenyl
4	Tetra	16	55	<---	mono-ortho	74338-24-2	2,3,3',4 - Tetra chlorobiphenyl
4	Tetra	17	56	<---	mono-ortho	41464-43-1	2,3,3',4' - Tetra chlorobiphenyl
4	Tetra	18	57	<---	mono-ortho	70424-67-8	2,3,3',5 - Tetra chlorobiphenyl
4	Tetra	19	58	<---	mono-ortho	41464-49-7	2,3,3',5' - Tetra chlorobiphenyl
4	Tetra	20	59	<---	di-ortho	74472-33-6	2,3,3',6 - Tetra chlorobiphenyl
4	Tetra	21	60	<---	mono-ortho	33025-41-1	2,3,4,4' - Tetra chlorobiphenyl
4	Tetra	22	61	<---	mono-ortho	33284-53-6	2,3,4,5 - Tetra chlorobiphenyl
4	Tetra	23	62	<---	di-ortho	54230-22-7	2,3,4,6 - Tetra chlorobiphenyl
4	Tetra	24	63	<---	mono-ortho	74472-34-7	2,3,4',5 - Tetra chlorobiphenyl
4	Tetra	25	64	<---	di-ortho	52663-58-8	2,3,4',6 - Tetra chlorobiphenyl
4	Tetra	26	65	<---	di-ortho	33284-54-7	2,3,5,6 - Tetra chlorobiphenyl
4	Tetra	27	66	<---	mono-ortho	32598-10-0	2,3',4,4' - Tetra chlorobiphenyl
4	Tetra	28	67	<---	mono-ortho	73557-53-8	2,3',4,5 - Tetra chlorobiphenyl
4	Tetra	29	68	<---	mono-ortho	73575-52-7	2,3',4,5' - Tetra chlorobiphenyl
4	Tetra	30	69	<---	di-ortho	60233-24-1	2,3',4,6 - Tetra chlorobiphenyl
4	Tetra	31	70	<---	mono-ortho	32598-11-1	2,3',4',5 - Tetra chlorobiphenyl
4	Tetra	32	71	<---	di-ortho	41464-46-4	2,3',4',6 - Tetra chlorobiphenyl
4	Tetra	33	72	<---	mono-ortho	41464-42-0	2,3',5,5' - Tetra chlorobiphenyl
4	Tetra	34	73	<---	di-ortho	74338-23-1	2,3',5',6 - Tetra chlorobiphenyl
4	Tetra	35	74	<---	mono-ortho	32690-93-0	2,4,4',5 - Tetra chlorobiphenyl
4	Tetra	36	75	<---	di-ortho	32598-12-2	2,4,4',6 - Tetra chlorobiphenyl
4	Tetra	37	76	<---	mono-ortho	70362-48-0	2',3,4,5 - Tetra chlorobiphenyl
4	Tetra	38	77	<---	non-ortho	32598-13-3	3,3',4,4' - Tetra chlorobiphenyl
4	Tetra	39	78	<---	non-ortho	70362-49-1	3,3',4,5 - Tetra chlorobiphenyl
4	Tetra	40	79	<---	non-ortho	41464-48-6	3,3',4,5' - Tetra chlorobiphenyl
4	Tetra	41	80	<---	non-ortho	33284-52-5	3,3',5,5' - Tetra chlorobiphenyl
4	Tetra	42	81	<---	non-ortho	70362-50-4	3,4,4',5 - Tetra chlorobiphenyl

表-5. 5塩化ビフェニルの構造式

塩素数	同族体	No.	IUPAC#	BZ#	ortho	CAS No.	構造式
5	Penta	1	82	<---	di-ortho	52663-62-4	2,2',3,3',4 - Penta chlorobiphenyl
5	Penta	2	83	<---	di-ortho	60145-20-2	2,2',3,3',5 - Penta chlorobiphenyl
5	Penta	3	84	<---	tri-ortho	52663-60-2	2,2',3,3',6 - Penta chlorobiphenyl
5	Penta	4	85	<---	di-ortho	65510-45-4	2,2',3,4,4' - Penta chlorobiphenyl
5	Penta	5	86	<---	di-ortho	55312-69-1	2,2',3,4,5 - Penta chlorobiphenyl
5	Penta	6	87	<---	di-ortho	38380-02-8	2,2',3,4,5' - Penta chlorobiphenyl
5	Penta	7	88	<---	tri-ortho	55215-17-3	2,2',3,4,6 - Penta chlorobiphenyl
5	Penta	8	89	<---	tri-ortho	73575-57-2	2,2',3,4,6' - Penta chlorobiphenyl
5	Penta	9	90	<---	di-ortho	68194-07-0	2,2',3,4',5 - Penta chlorobiphenyl
5	Penta	10	91	<---	tri-ortho	68194-05-8	2,2',3,4',6 - Penta chlorobiphenyl
5	Penta	11	92	<---	di-ortho	52663-61-3	2,2',3,5,5' - Penta chlorobiphenyl
5	Penta	12	93	<---	tri-ortho	73575-56-1	2,2',3,5,6 - Penta chlorobiphenyl
5	Penta	13	94	<---	tri-ortho	73575-55-0	2,2',3,5,6' - Penta chlorobiphenyl
5	Penta	14	95	<---	tri-ortho	38379-99-6	2,2',3,5',6 - Penta chlorobiphenyl
5	Penta	15	96	<---	tetra-ortho	73575-54-9	2,2',3,6,6' - Penta chlorobiphenyl
5	Penta	16	97	<---	di-ortho	41464-51-1	2,2',3',4,5 - Penta chlorobiphenyl
5	Penta	17	98	<---	tri-ortho	60233-25-2	2,2',3',4,6 - Penta chlorobiphenyl
5	Penta	18	99	<---	di-ortho	38380-01-1	2,2',4,4',5 - Penta chlorobiphenyl
5	Penta	19	100	<---	tri-ortho	39485-83-1	2,2',4,4',6 - Penta chlorobiphenyl
5	Penta	20	101	<---	di-ortho	37680-73-2	2,2',4,5,5' - Penta chlorobiphenyl
5	Penta	21	102	<---	tri-ortho	68194-06-9	2,2',4,5,6' - Penta chlorobiphenyl
5	Penta	22	103	<---	tri-ortho	60145-21-3	2,2',4,5',6 - Penta chlorobiphenyl
5	Penta	23	104	<---	tetra-ortho	56558-16-8	2,2',4,6,6' - Penta chlorobiphenyl
5	Penta	24	105	<---	mono-ortho	32598-14-4	2,3,3',4,4' - Penta chlorobiphenyl
5	Penta	25	106	<---	mono-ortho	70424-69-0	2,3,3',4,5 - Penta chlorobiphenyl
5	Penta	26	107	108	mono-ortho	70362-41-3	2,3,3',4,5' - Penta chlorobiphenyl
5	Penta	27	108	109	di-ortho	74472-35-8	2,3,3',4,6 - Penta chlorobiphenyl
5	Penta	28	109	107	mono-ortho	70424-68-9	2,3,3',4',5 - Penta chlorobiphenyl
5	Penta	29	110	<---	di-ortho	38380-03-9	2,3,3',4',6 - Penta chlorobiphenyl
5	Penta	30	111	<---	mono-ortho	39635-32-0	2,3,3',5,5' - Penta chlorobiphenyl
5	Penta	31	112	<---	di-ortho	74472-36-9	2,3,3',5,6 - Penta chlorobiphenyl
5	Penta	32	113	<---	di-ortho	68194-10-5	2,3,3',5',6 - Penta chlorobiphenyl
5	Penta	33	114	<---	mono-ortho	74472-37-0	2,3,4,4',5 - Penta chlorobiphenyl
5	Penta	34	115	<---	di-ortho	74472-38-1	2,3,4,4',6 - Penta chlorobiphenyl
5	Penta	35	116	<---	di-ortho	18259-05-7	2,3,4,5,6 - Penta chlorobiphenyl
5	Penta	36	117	<---	di-ortho	68194-11-6	2,3,4',5,6 - Penta chlorobiphenyl
5	Penta	37	118	<---	mono-ortho	31508-00-6	2,3',4,4',5 - Penta chlorobiphenyl
5	Penta	38	119	<---	di-ortho	56558-17-9	2,3',4,4',6 - Penta chlorobiphenyl
5	Penta	39	120	<---	mono-ortho	68194-12-7	2,3',4,5,5' - Penta chlorobiphenyl
5	Penta	40	121	<---	di-ortho	56558-18-0	2,3',4,5',6 - Penta chlorobiphenyl
5	Penta	41	122	<---	mono-ortho	76842-07-4	2',3,3',4,5 - Penta chlorobiphenyl
5	Penta	42	123	<---	mono-ortho	65510-44-3	2',3,4,4',5 - Penta chlorobiphenyl
5	Penta	43	124	<---	mono-ortho	70424-70-3	2',3,4,5,5' - Penta chlorobiphenyl
5	Penta	44	125	<---	di-ortho	74472-39-2	2',3,4,5,6' - Penta chlorobiphenyl
5	Penta	45	126	<---	non-ortho	57465-28-8	3,3',4,4',5 - Penta chlorobiphenyl
5	Penta	46	127	<---	non-ortho	39635-33-1	3,3',4,5,5' - Penta chlorobiphenyl

表-6. 6塩化ビフェニルの構造式

塩素数	同族体	No.	IUPAC#	BZ#	ortho	CAS No.	構造式
6	Hexa	1	128	<---	di-ortho	38380-07-3	2,2',3,3',4,4' - Hexa chlorobiphenyl
6	Hexa	2	129	<---	di-ortho	55215-18-4	2,2',3,3',4,5' - Hexa chlorobiphenyl
6	Hexa	3	130	<---	di-ortho	52663-66-8	2,2',3,3',4,5' - Hexa chlorobiphenyl
6	Hexa	4	131	<---	tri-ortho	61798-70-7	2,2',3,3',4,6' - Hexa chlorobiphenyl
6	Hexa	5	132	<---	tri-ortho	38380-05-1	2,2',3,3',4,6' - Hexa chlorobiphenyl
6	Hexa	6	133	<---	di-ortho	35694-04-3	2,2',3,3',5,5' - Hexa chlorobiphenyl
6	Hexa	7	134	<---	tri-ortho	52704-70-8	2,2',3,3',5,6' - Hexa chlorobiphenyl
6	Hexa	8	135	<---	tri-ortho	52744-13-5	2,2',3,3',5,6' - Hexa chlorobiphenyl
6	Hexa	9	136	<---	tetra-ortho	38411-22-2	2,2',3,3',6,6' - Hexa chlorobiphenyl
6	Hexa	10	137	<---	di-ortho	35694-06-5	2,2',3,4,4',5' - Hexa chlorobiphenyl
6	Hexa	11	138	<---	di-ortho	35065-28-2	2,2',3,4,4',5' - Hexa chlorobiphenyl
6	Hexa	12	139	<---	tri-ortho	56030-56-9	2,2',3,4,4',6' - Hexa chlorobiphenyl
6	Hexa	13	140	<---	tri-ortho	59291-64-4	2,2',3,4,4',6' - Hexa chlorobiphenyl
6	Hexa	14	141	<---	di-ortho	52712-04-6	2,2',3,4,5,5' - Hexa chlorobiphenyl
6	Hexa	15	142	<---	tri-ortho	41411-61-4	2,2',3,4,5,6' - Hexa chlorobiphenyl
6	Hexa	16	143	<---	tri-ortho	68194-15-0	2,2',3,4,5,6' - Hexa chlorobiphenyl
6	Hexa	17	144	<---	tri-ortho	68194-14-9	2,2',3,4,5,6' - Hexa chlorobiphenyl
6	Hexa	18	145	<---	tetra-ortho	74472-40-5	2,2',3,4,6,6' - Hexa chlorobiphenyl
6	Hexa	19	146	<---	di-ortho	51908-16-8	2,2',3,4',5,5' - Hexa chlorobiphenyl
6	Hexa	20	147	<---	tri-ortho	68194-13-8	2,2',3,4',5,6' - Hexa chlorobiphenyl
6	Hexa	21	148	<---	tri-ortho	74472-41-6	2,2',3,4',5,6' - Hexa chlorobiphenyl
6	Hexa	22	149	<---	tri-ortho	38380-04-0	2,2',3,4',5',6' - Hexa chlorobiphenyl
6	Hexa	23	150	<---	tetra-ortho	68194-08-1	2,2',3,4',6,6' - Hexa chlorobiphenyl
6	Hexa	24	151	<---	tri-ortho	52663-63-5	2,2',3,5,5',6' - Hexa chlorobiphenyl
6	Hexa	25	152	<---	tetra-ortho	68194-09-2	2,2',3,5,6,6' - Hexa chlorobiphenyl
6	Hexa	26	153	<---	di-ortho	35065-27-1	2,2',4,4',5,5' - Hexa chlorobiphenyl
6	Hexa	27	154	<---	tri-ortho	60145-22-4	2,2',4,4',5,6' - Hexa chlorobiphenyl
6	Hexa	28	155	<---	tetra-ortho	33979-03-2	2,2',4,4',6,6' - Hexa chlorobiphenyl
6	Hexa	29	156	<---	mono-ortho	38380-08-4	2,3,3',4,4',5' - Hexa chlorobiphenyl
6	Hexa	30	157	<---	mono-ortho	69782-90-7	2,3,3',4,4',5' - Hexa chlorobiphenyl
6	Hexa	31	158	<---	di-ortho	74472-42-7	2,3,3',4,4',6' - Hexa chlorobiphenyl
6	Hexa	32	159	<---	mono-ortho	39635-35-3	2,3,3',4,5,5' - Hexa chlorobiphenyl
6	Hexa	33	160	<---	di-ortho	41411-62-5	2,3,3',4,5,6' - Hexa chlorobiphenyl
6	Hexa	34	161	<---	di-ortho	74474-43-8	2,3,3',4,5',6' - Hexa chlorobiphenyl
6	Hexa	35	162	<---	mono-ortho	39635-34-2	2,3,3',4',5,5' - Hexa chlorobiphenyl
6	Hexa	36	163	<---	di-ortho	74472-44-9	2,3,3',4',5,6' - Hexa chlorobiphenyl
6	Hexa	37	164	<---	di-ortho	74472-45-0	2,3,3',4',5',6' - Hexa chlorobiphenyl
6	Hexa	38	165	<---	di-ortho	74472-46-1	2,3,3',5,5',6' - Hexa chlorobiphenyl
6	Hexa	39	166	<---	di-ortho	41411-63-6	2,3,4,4',5,6' - Hexa chlorobiphenyl
6	Hexa	40	167	<---	mono-ortho	52663-72-6	2,3',4,4',5,5' - Hexa chlorobiphenyl
6	Hexa	41	168	<---	di-ortho	59291-65-5	2,3',4,4',5',6' - Hexa chlorobiphenyl
6	Hexa	42	169	<---	non-ortho	32774-16-6	3,3',4,4',5,5' - Hexa chlorobiphenyl

表-7. 7塩化ビフェニルの構造式

塩素数	同族体	No.	IUPAC#	BZ#	ortho	CAS No.	構造式
7	Hepta	1	170	<---	di-ortho	35065-30-6	2,2',3,3',4,4',5 - Hepta chlorobiphenyl
7	Hepta	2	171	<---	tri-ortho	52663-71-5	2,2',3,3',4,4',6 - Hepta chlorobiphenyl
7	Hepta	3	172	<---	di-ortho	52663-74-8	2,2',3,3',4,5,5' - Hepta chlorobiphenyl
7	Hepta	4	173	<---	tri-ortho	68194-16-1	2,2',3,3',4,5,6 - Hepta chlorobiphenyl
7	Hepta	5	174	<---	tri-ortho	38411-25-5	2,2',3,3',4,5,6' - Hepta chlorobiphenyl
7	Hepta	6	175	<---	tri-ortho	40186-70-7	2,2',3,3',4,5',6 - Hepta chlorobiphenyl
7	Hepta	7	176	<---	tetra-ortho	52663-65-7	2,2',3,3',4,6,6' - Hepta chlorobiphenyl
7	Hepta	8	177	<---	tri-ortho	52663-70-4	2,2',3,3',4',5,6 - Hepta chlorobiphenyl
7	Hepta	9	178	<---	tri-ortho	52663-67-9	2,2',3,3',5,5',6 - Hepta chlorobiphenyl
7	Hepta	10	179	<---	tetra-ortho	52663-64-6	2,2',3,3',5,6,6' - Hepta chlorobiphenyl
7	Hepta	11	180	<---	di-ortho	35065-29-3	2,2',3,4,4',5,5' - Hepta chlorobiphenyl
7	Hepta	12	181	<---	tri-ortho	74472-47-2	2,2',3,4,4',5,6 - Hepta chlorobiphenyl
7	Hepta	13	182	<---	tri-ortho	60145-23-5	2,2',3,4,4',5,6' - Hepta chlorobiphenyl
7	Hepta	14	183	<---	tri-ortho	52663-69-1	2,2',3,4,4',5',6 - Hepta chlorobiphenyl
7	Hepta	15	184	<---	tetra-ortho	74472-48-3	2,2',3,4,4',6,6' - Hepta chlorobiphenyl
7	Hepta	16	185	<---	tri-ortho	52712-05-7	2,2',3,4,5,5',6 - Hepta chlorobiphenyl
7	Hepta	17	186	<---	tetra-ortho	74472-49-4	2,2',3,4,5,6,6' - Hepta chlorobiphenyl
7	Hepta	18	187	<---	tri-ortho	52663-68-0	2,2',3,4',5,5',6 - Hepta chlorobiphenyl
7	Hepta	19	188	<---	tetra-ortho	74487-85-7	2,2',3,4',5,6,6' - Hepta chlorobiphenyl
7	Hepta	20	189	<---	mono-ortho	39635-31-9	2,3,3',4,4',5,5' - Hepta chlorobiphenyl
7	Hepta	21	190	<---	di-ortho	41411-64-7	2,3,3',4,4',5,6 - Hepta chlorobiphenyl
7	Hepta	22	191	<---	di-ortho	74472-50-7	2,3,3',4,4',5',6 - Hepta chlorobiphenyl
7	Hepta	23	192	<---	di-ortho	74472-51-8	2,3,3',4,5,5',6 - Hepta chlorobiphenyl
7	Hepta	24	193	<---	di-ortho	69782-91-8	2,3,3',4',5,5',6 - Hepta chlorobiphenyl

表-8. 8塩化ビフェニルの構造式

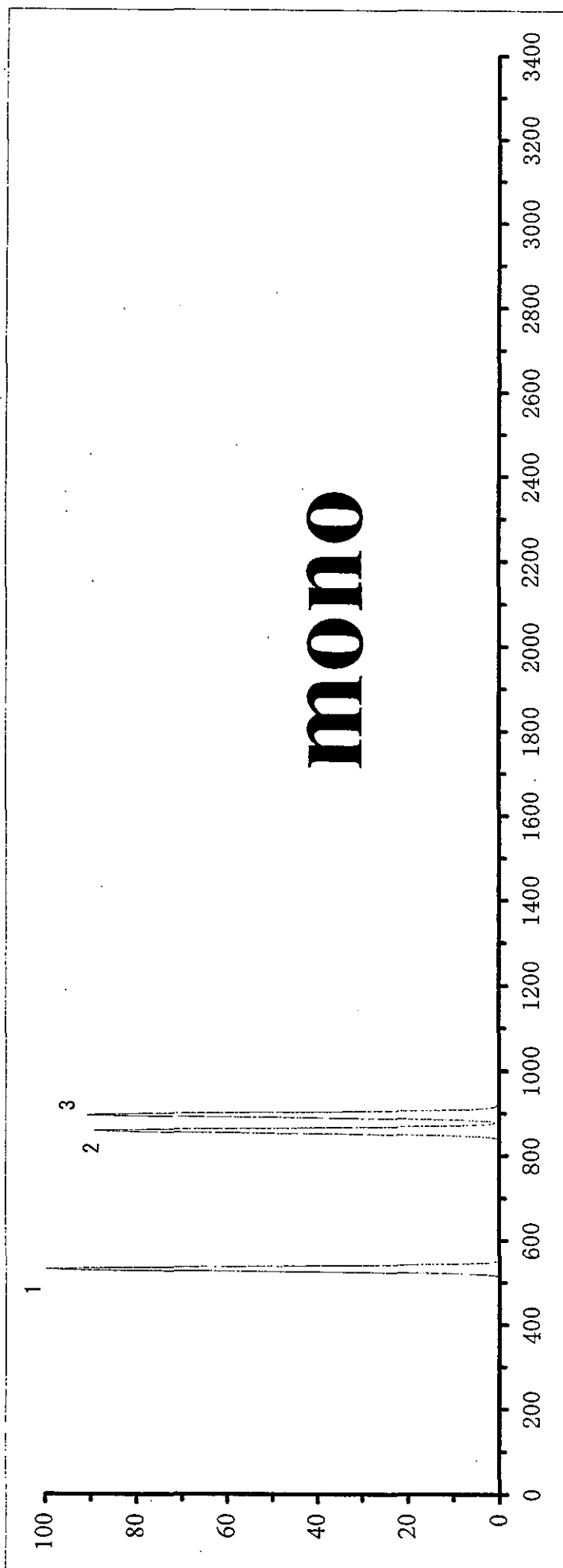
塩素数	同族体	No.	IUPAC#	BZ#	ortho	CAS No.	構造式
8	Octa	1	194	<---	di-ortho	35694-08-7	2,2',3,3',4,4',5,5' - Octa chlorobiphenyl
8	Octa	2	195	<---	tri-ortho	52663-78-2	2,2',3,3',4,4',5,6 - Octa chlorobiphenyl
8	Octa	3	196	<---	tri-ortho	42740-50-1	2,2',3,3',4,4',5',6 - Octa chlorobiphenyl
8	Octa	4	197	<---	tetra-ortho	33091-17-7	2,2',3,3',4,4',6,6' - Octa chlorobiphenyl
8	Octa	5	198	<---	tri-ortho	68194-17-2	2,2',3,3',4,5,5',6 - Octa chlorobiphenyl
8	Octa	6	199	201	tri-ortho	52663-75-9	2,2',3,3',4,5,5',6' - Octa chlorobiphenyl
8	Octa	7	200	199	tetra-ortho	52663-73-7	2,2',3,3',4,5,6,6' - Octa chlorobiphenyl
8	Octa	8	201	200	tetra-ortho	40186-71-8	2,2',3,3',4,5',6,6' - Octa chlorobiphenyl
8	Octa	9	202	<---	tetra-ortho	2136-99-4	2,2',3,3',5,5',6,6' - Octa chlorobiphenyl
8	Octa	10	203	<---	tri-ortho	52663-76-0	2,2',3,4,4',5,5',6 - Octa chlorobiphenyl
8	Octa	11	204	<---	tetra-ortho	74472-52-9	2,2',3,4,4',5,6,6' - Octa chlorobiphenyl
8	Octa	12	205	<---	di-ortho	74472-53-0	2,3,3',4,4',5,5',6 - Octa chlorobiphenyl

表-9. 9塩化ビフェニルの構造式

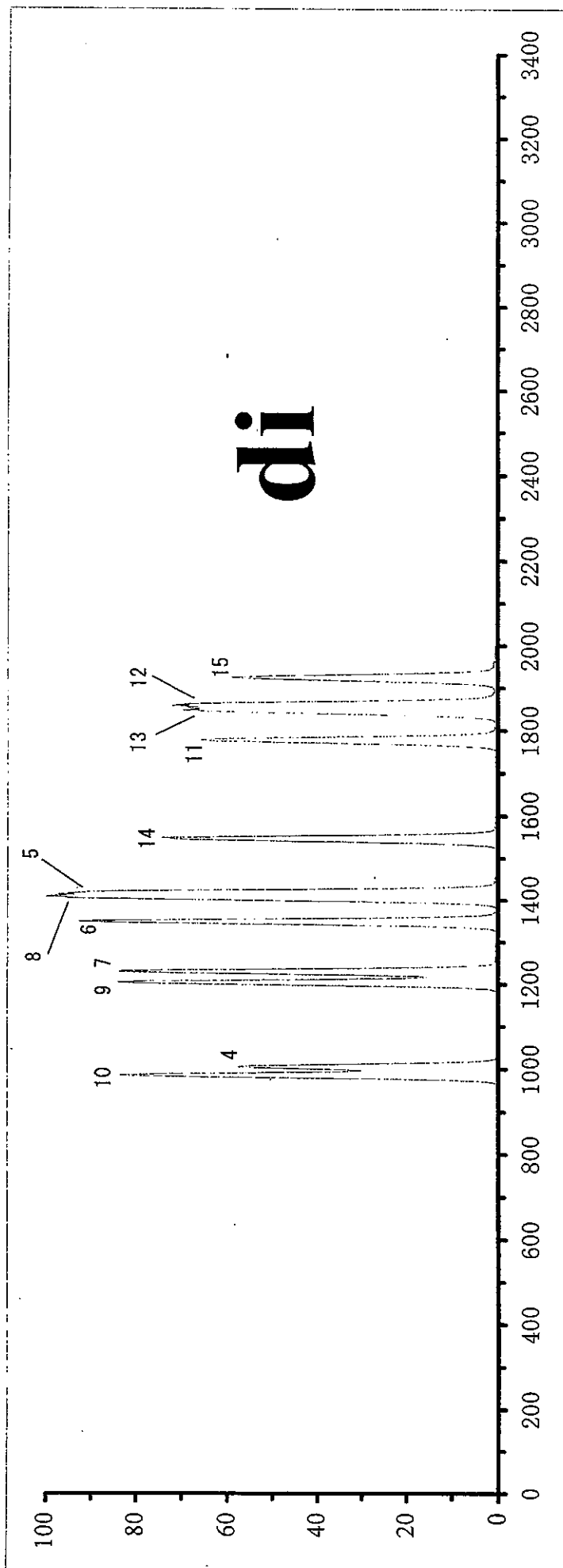
塩素数	同族体	No.	IUPAC#	BZ#	ortho	CAS No.	構造式
9	Nona	1	206	<---	tri-ortho	40186-72-9	2,2',3,3',4,4',5,5',6 - Nona chlorobiphenyl
9	Nona	2	207	<---	tetra-ortho	52663-79-3	2,2',3,3',4,4',5,6,6' - Nona chlorobiphenyl
9	Nona	3	208	<---	tetra-ortho	52663-77-1	2,2',3,3',4,5,5',6,6' - Nona chlorobiphenyl

表-10. 10塩化ビフェニルの構造式

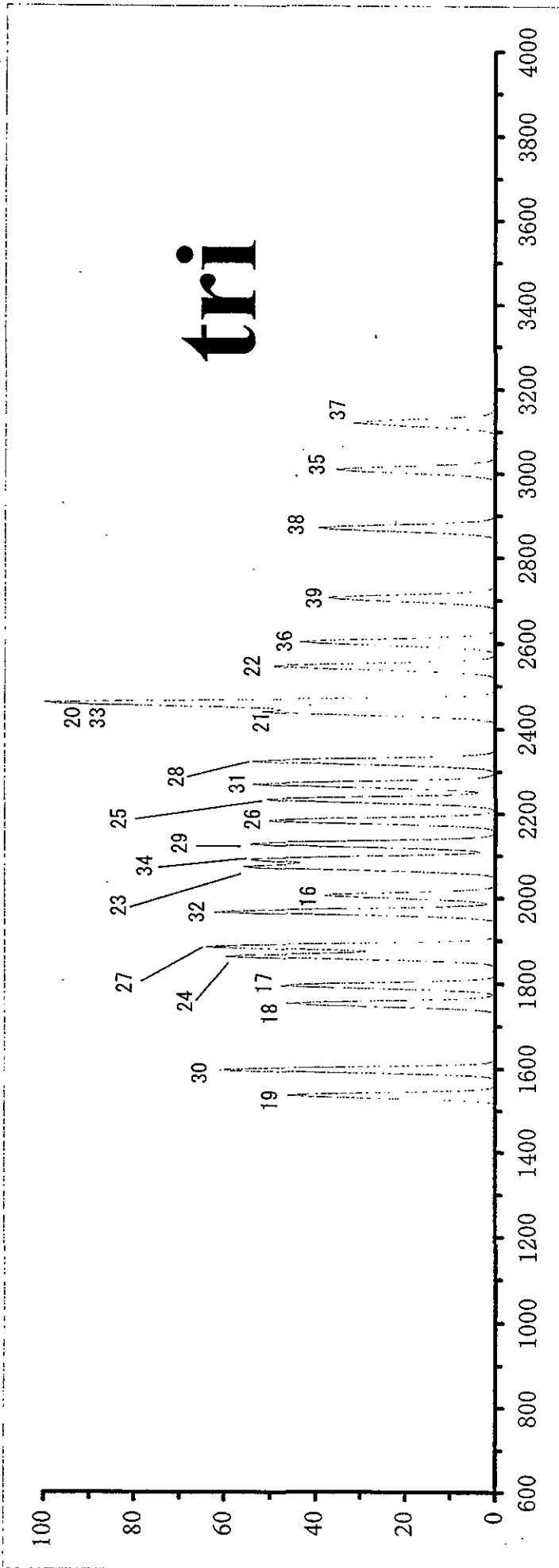
塩素数	同族体	No.	IUPAC#	BZ#	ortho	CAS No.	構造式
10	Deca	1	209	<---	tetra-ortho	2051-24-3	2,2',3,3',4,4',5,5',6,6' - Deca chlorobiphenyl



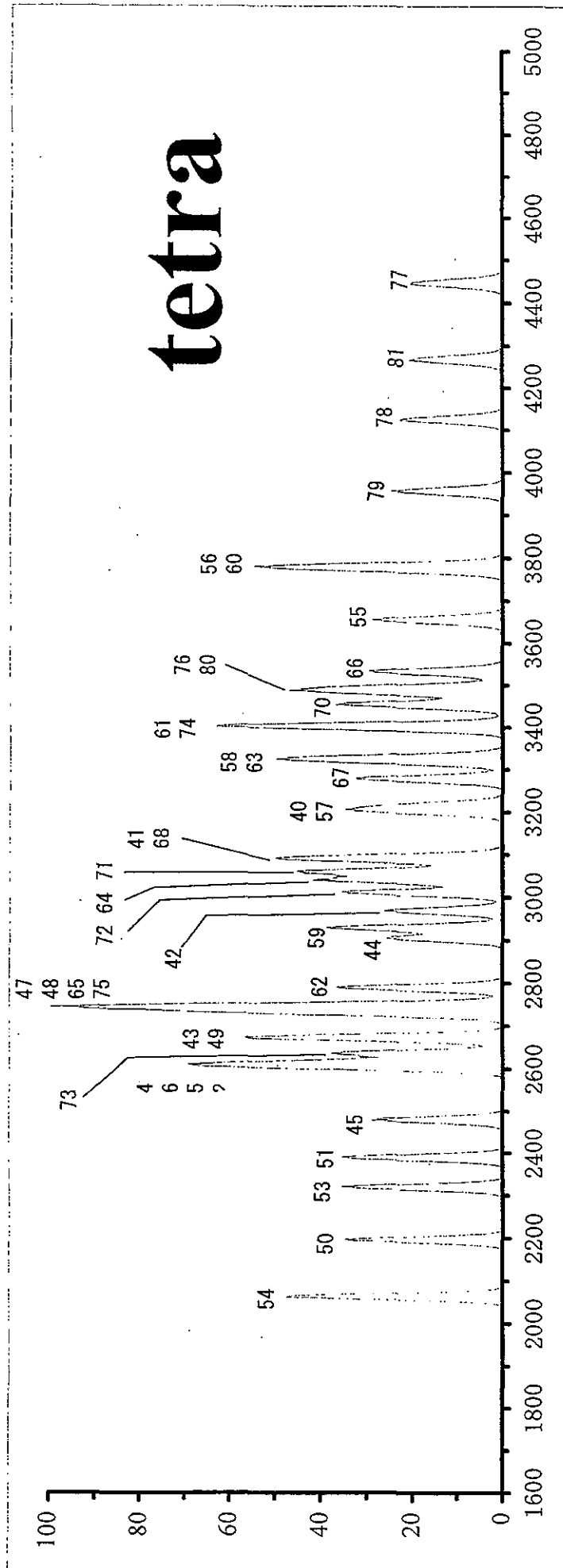
HT8(SGE)による mono CBs のクロマトグラム(クロマトグラム各ピークの番号はBZ#を示す)



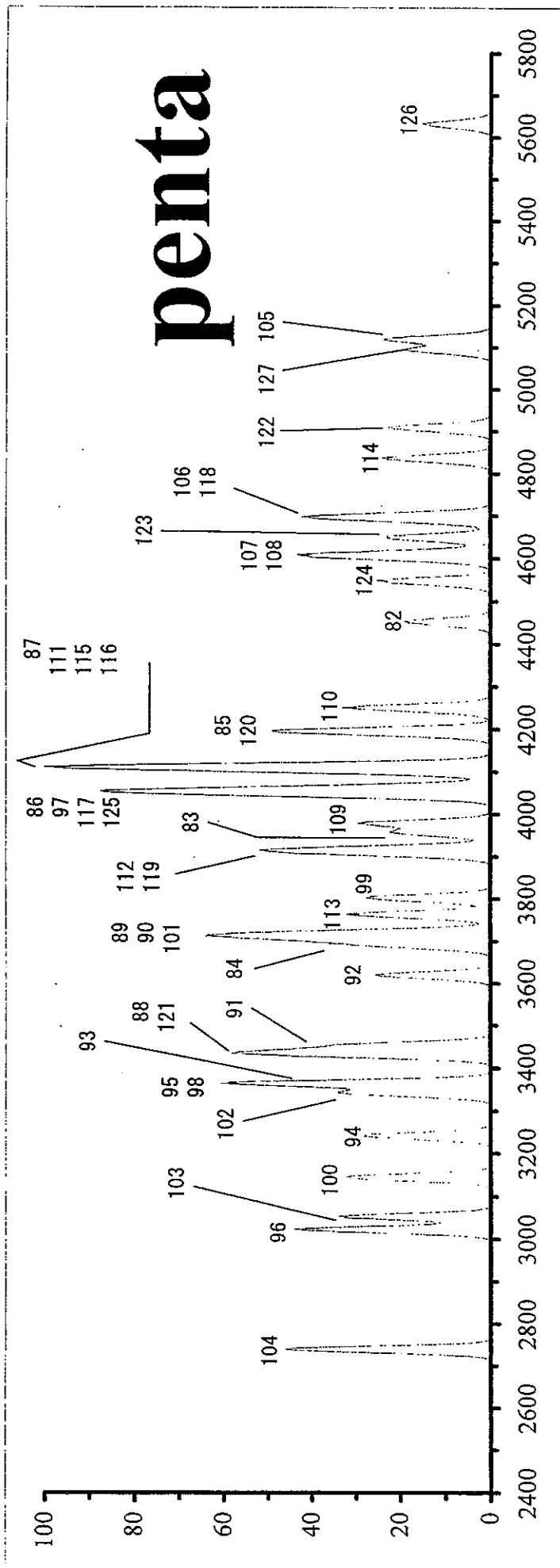
HT8(SGE)による di CBs のクロマトグラム(クロマトグラム各ピークの番号はBZ#を示す)



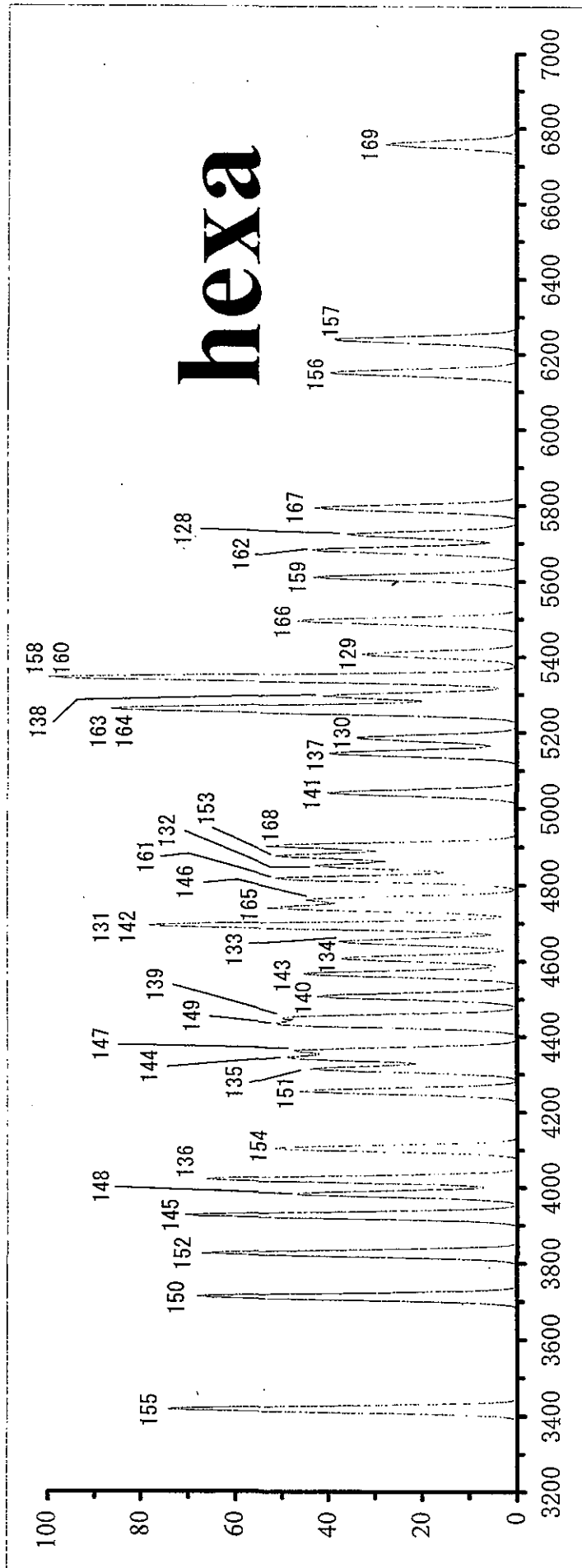
HT8(SGE)による tri CBs のクロマトグラム(クロマトグラム各ピークの番号はBZ#を示す)



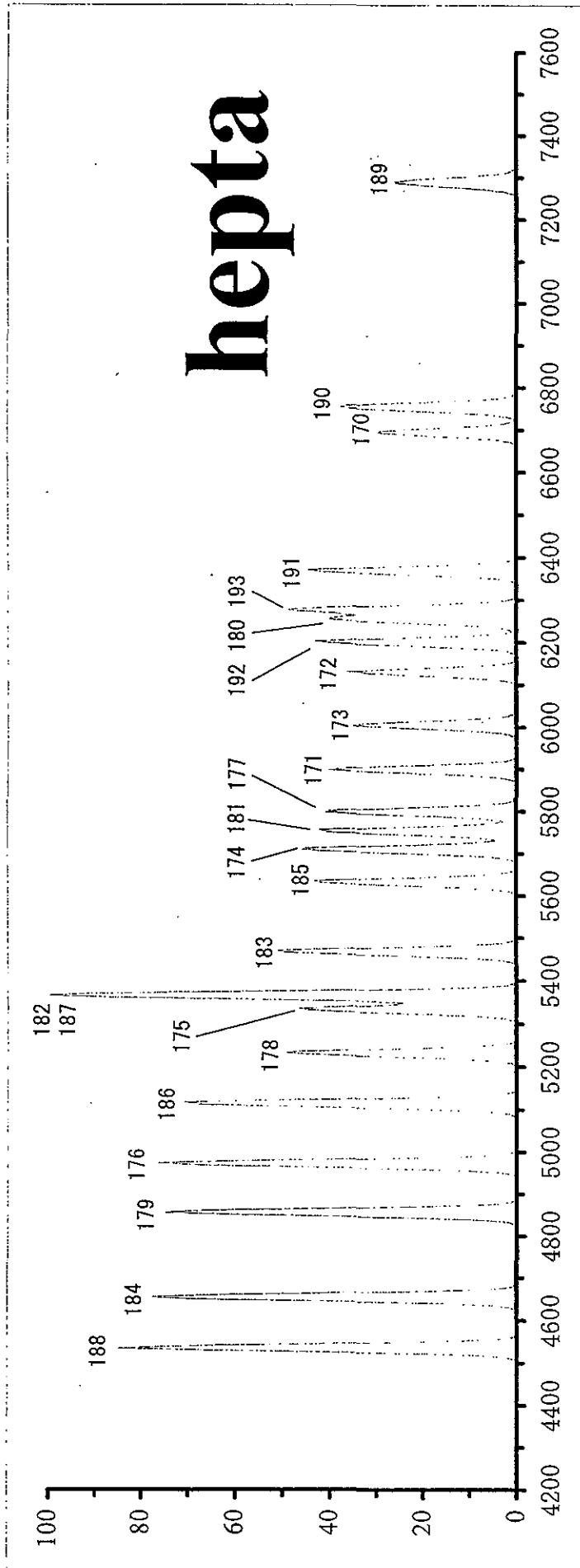
HT8(SGE)による tetra CBs のクロマトグラム(クロマトグラム各ピークの番号はBZ#を示す)



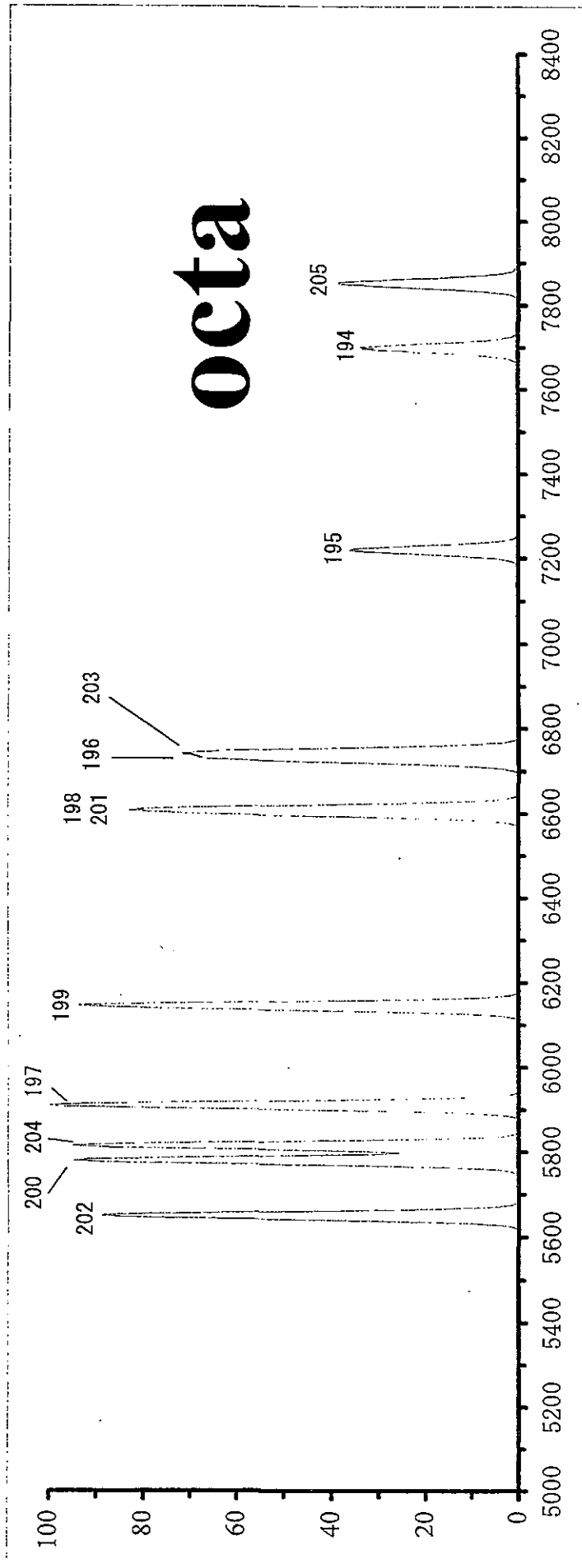
HT8(SGE)による penta CBs のクロマトグラム(クロマトグラム各ピークの番号はBZ#を示す)



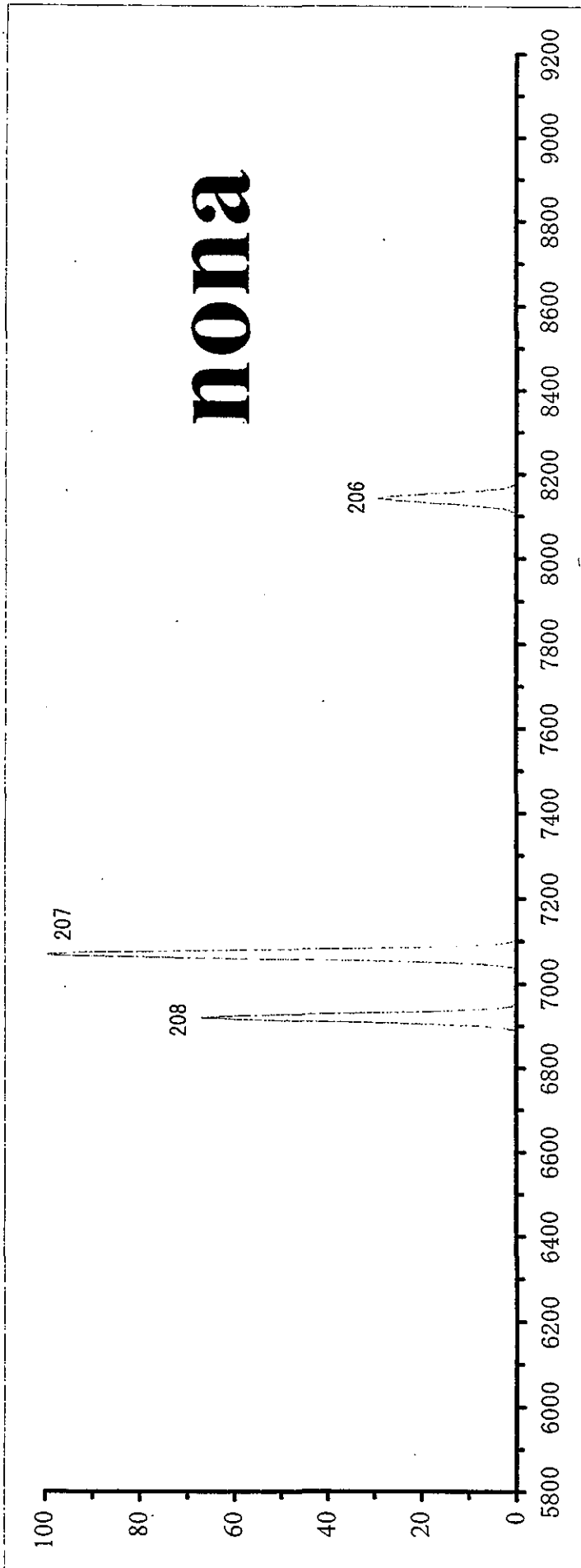
HT8(SGE)による hexa CBs のクロマトグラム(クロマトグラム各ピークの番号はBZ#を示す)



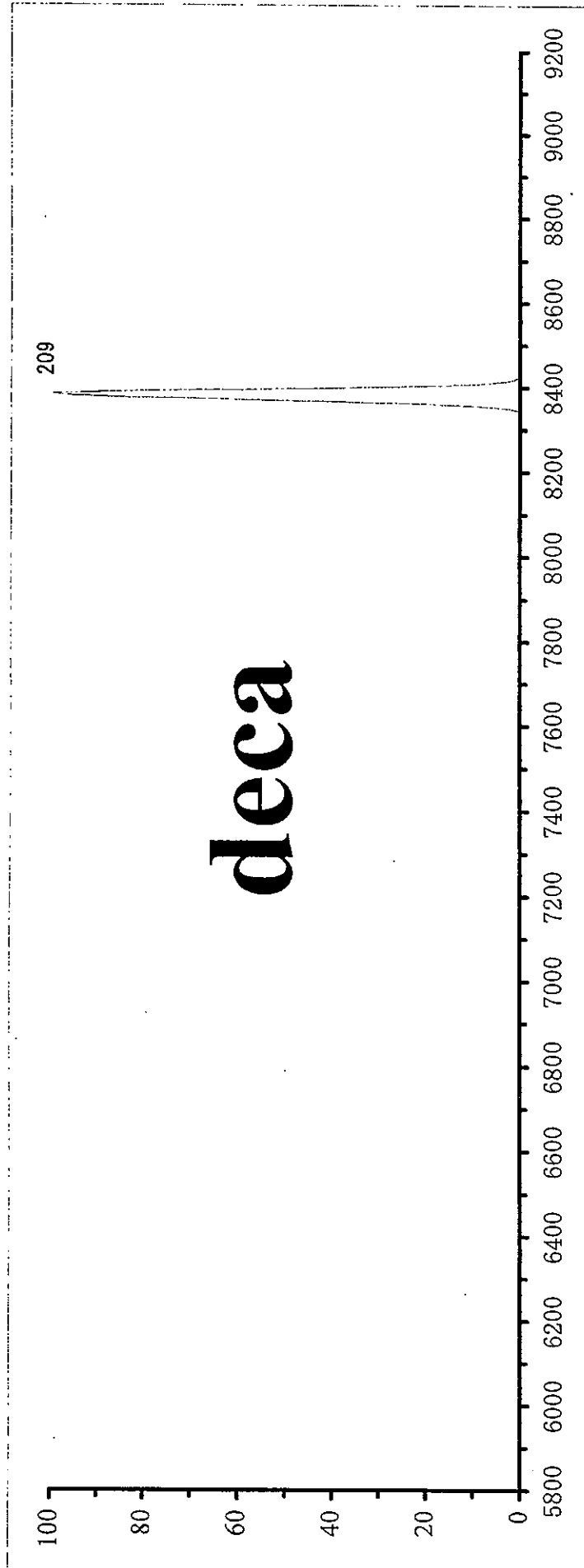
HT8(SGE)による hepta CBs のクロマトグラム(クロマトグラム各ピークの番号はBZ#を示す)



HT8(SGE)による octa CBs のクロマトグラム(クロマトグラム各ピークの番号はBZ#を示す)



HT8(SGE)による nona CBs のクロマトグラム(クロマトグラム各ピークの番号はBZ#を示す)



HT8(SGE)による deca CBs のクロマトグラム(クロマトグラム各ピークの番号はBZ#を示す)