

The 13th ASEAN and Japan High Level Officials Meeting on Caring Societies

Living Support for the Affected People by Disaster from the Viewpoint of Community Welfare

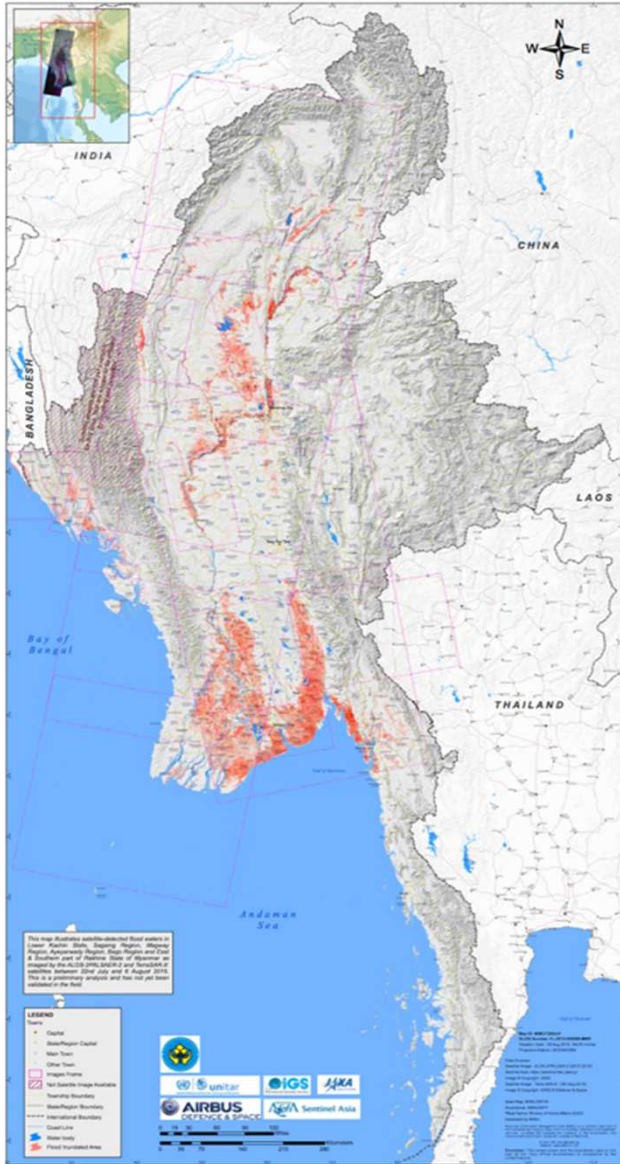
The Ministry of Social Welfare, Relief and Resettlement
Republic of the Union of Myanmar

Content

- Current Disaster in Myanmar
- Legal Framework
- Lesson Learnt from the Past Disaster
- Government's Provision for the affected people
- New Approach for Living Support for the Affected people by disaster from the viewpoint of community welfare

Current Disaster in Myanmar

- Starting from 16 July, torrential rains in northern part of Myanmar and the affects of Cyclone Komen caused record breaking flooding in 11 states and region and landslides in Chin State.



Current Disaster in Myanmar

Area coverage	Twelve states and region out of 14
Affected population	1.67 million
Death toll	132
Totally destroyed houses	38951
Partially damaged house	487550
Direct economic loss	230 billion Kyats
Damaged farmland	1,494,702 acres
Destroyed farmland	870,340 acres
Infrastructure damages	261 dykes 1092 bridges 1086 road sections 643 schools 224 health facilities



Legal Framework

- **Disaster Management Law 2013**

Article 13(b)

13. The department, organization or person that has been assigned responsibility under this law:

(b) shall give priority and protect infants, the elderly, the disabled and women (especially pregnant women or mothers and suckling mother) in carrying out the functions contained in sub-section(a)

Article 18(b)

18. Rehabilitation and reconstruction activities to be carried out after disaster include the following:

(b) providing the continuation of sufficient food, relief and rehabilitation items, appropriate and financial assistance from the allocated funds to the victims

Lesson Learnt from the Past Disasters

The followings are witnessed as per experiences of previous disaster events:

- Human Trafficking
- Destruction of livelihood and ceasing of cash circulation
- Migration
- Depression since debt mounted from loss

Government's Provision for the affected people

- Food ration
- Non-Food Item
- Compensation for death
- Cash for construction material
- Psychological support
- Health care services
- Reconstruction of houses
- Social protection programmes
- Livelihood assistance



The Ministry of Social Welfare, Relief and Resettlement alone provided 852.6 Million Myanmar Kyat (710,469 US\$)

New Approach for Living Support for the Affected people by disaster from the viewpoint of community welfare

State/ Region	Elderly (70+)		Pregnant Women		Under 5 Children		Person with Disability	
	Beneficiary	Amount (Kyat in Million)	Beneficiary	Amount (Kyat in Million)	Beneficiary	Amount (Kyat in Million)	Beneficiary	Amount (Kyat in Million)
Chin	176	10.56	138	8.28	1326	39.78	63	1.89
Sagaing	4448	266.88	1290	77.4	16483	494.49	632	18.96
Magway	4236	254.16	717	43.02	6661	199.83	717	21.51
Rakhine	3252	195.12	534	32.04	5140	154.20	115	3.45
Ayeyawady	22049	1322.94	4181	250.86	31884	956.52	1723	51.69
Total	34161	2049.66	6860	411.6	61494	1844.82	3250	97.5
Overall Social Protection Grand Total							105,765	4403.58

Elderly and Preg. Women: 10,000 Kyat/month for 6 months
 U5 Children and PWD: 5,000 Kyat/month for 6 months

New Approach for Living Support for the Affected people by disaster from the viewpoint of community welfare

State/ Region	Social Protection	
	Beneficiary	Amount (Kyat in Million)
Chin	1703	60.51
Sagaing	22853	857.73
Magway	12331	518.52
Rakhine	9041	384.81
Ayeyawady	59837	2582.01
Total	105765	4403.58

New Approach for Living Support for the Affected people by disaster from the viewpoint of community welfare

Cash Assistance to Poor Household

State/ Region	Family Member 4 & below		Family Member 5 & above		Total	
	Beneficiary	Amount (Kyat in Million)	Beneficiary	Amount (Kyat in Million)	Beneficiary	Amount (Kyat in Million)
Chin*	408	73.44	1082	324.6	1490	398.04
Sagaing*	4726	850.68	7016	2104.8	11742	2955.48
Magway	565	16.95	426	21.3	991	38.25
Ayeyawady	23624	708.72	28897	1444.85	52521	2153.58
Total	29323	1649.79	37421	3895.55	66744	5545.34

Family member 4 and below - 30,000 Kyat per month for one month

Family member 5 and above - 50,000 Kyat per month for one month

* Chin and Sagaing - will provide 6 months

**Thank you for your kind
attention.**