



CHILD CARE IN MALAYSIA

By:

Mr. Arfan Sulaiman

Director of Child Division

Social Welfare Department, MALAYSIA

CHILD CARE IN MALAYSIA



 **DEMOGRAPHY**

 **LABOUR FORCE PARTICIPATION RATE**

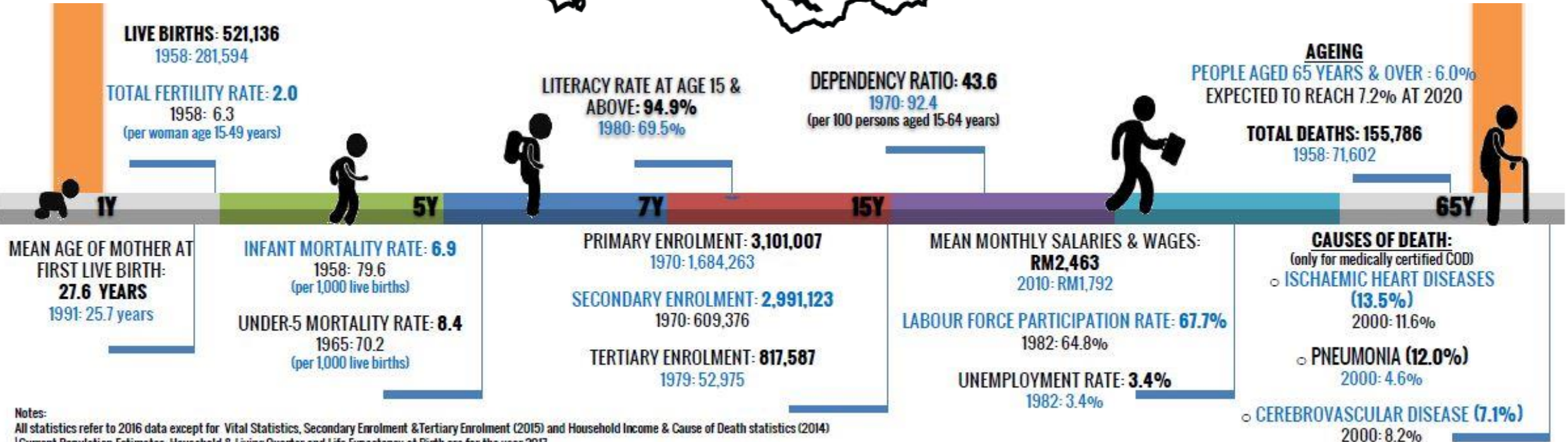
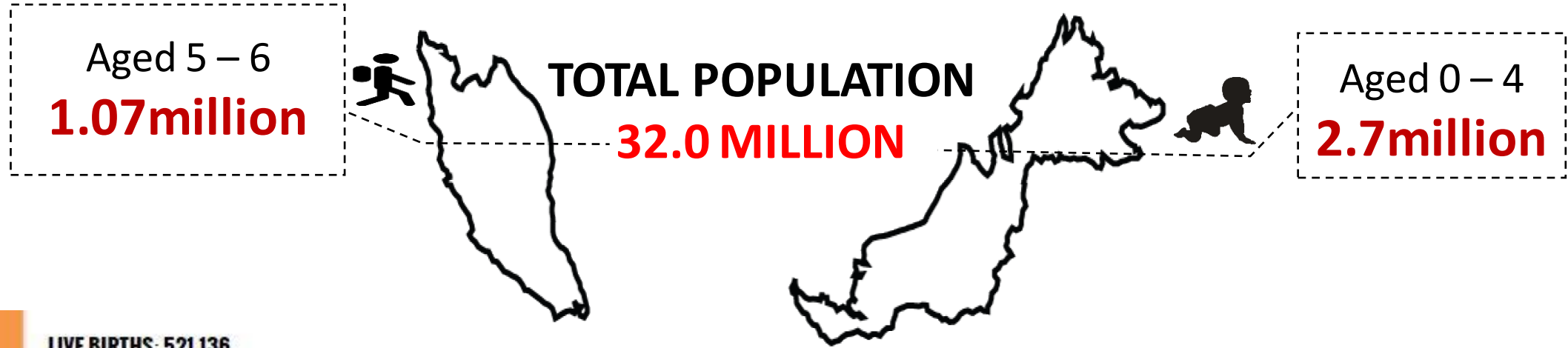
 **LEGAL FRAMEWORK**

 **CATEGORIES OF CHILD CARE CENTRE**

 **INCENTIVES**

 **SUBSIDIES**

DEMOGRAPHY

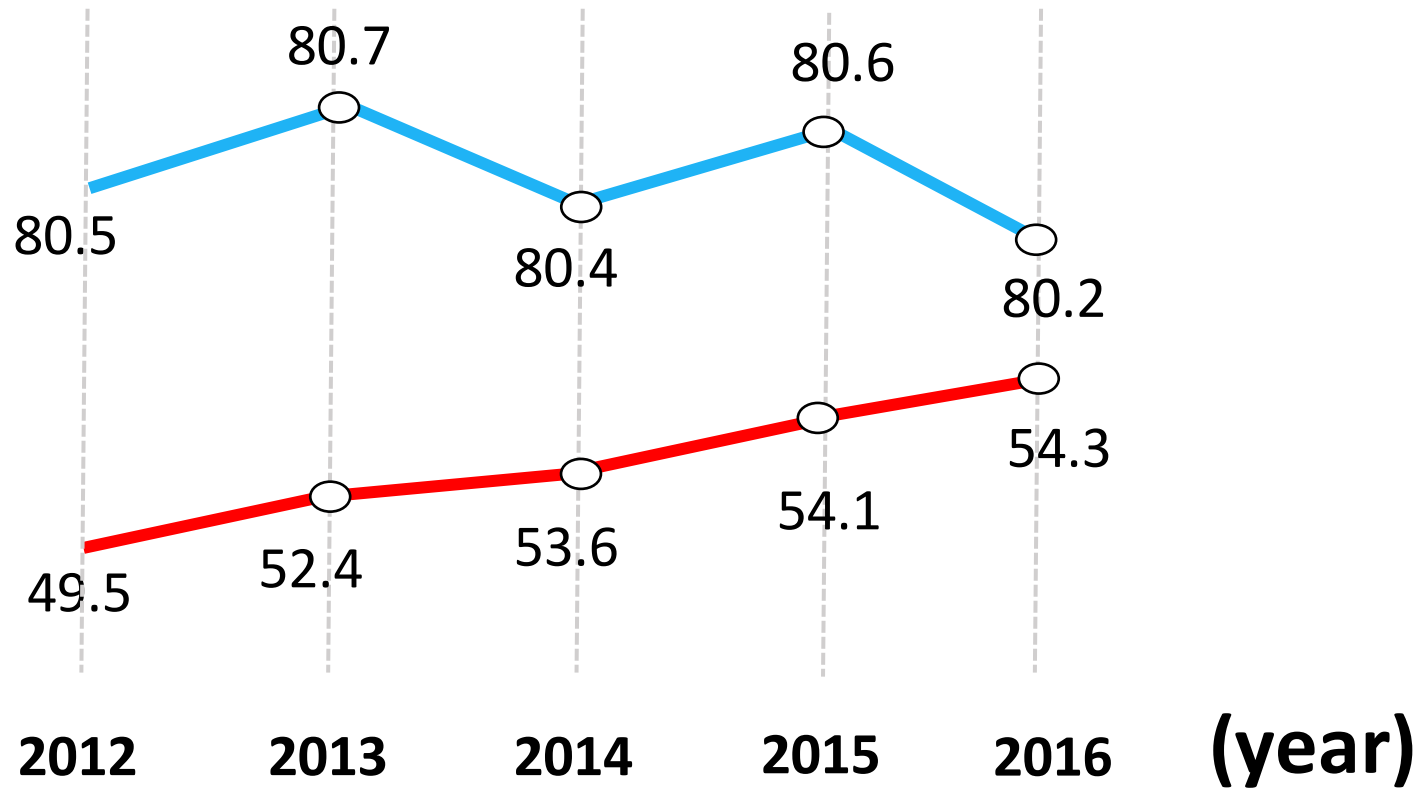


Notes:
All statistics refer to 2016 data except for Vital Statistics, Secondary Enrolment & Tertiary Enrolment (2015) and Household Income & Cause of Death statistics (2014)
¹ Current Population Estimates, Household & Living Quarter and Life Expectancy at Birth are for the year 2017
Vital statistics for 1958 & 1991 refer to Peninsular Malaysia only

LABOUR FORCE PARTICIPATION RATE



(%)



— Male
— Female

LEGAL FRAMEWORK



Child Care Centre is defined as **any premise that receives four (4) or more children under the age of four (4) years to be cared for wages**

Child Care Centre must be **licensed and registered** with Social Welfare Department

**Child Care Centre Act
1984 (Act 308)**

**Child Care Centre
Regulations 2012**

enacted to provide for the **registration, inspection and enforcement** of child care centres and matters related to child care aged from birth to 4 years old

to ensure the **well-being, security** and the **holistic development of children** in the country

CATEGORIES OF CHILDCARE CENTRE



Home Based Child Care Centre



centre which receives a minimum number of **4 to 9 children** at one particular period

Institution Child Care Centre



centre which receives **10 or more children** at one particular period

Community Child Care Centre



Community based child care centre targeted for **low household income** (B40)

Child Care Centre at Workplace



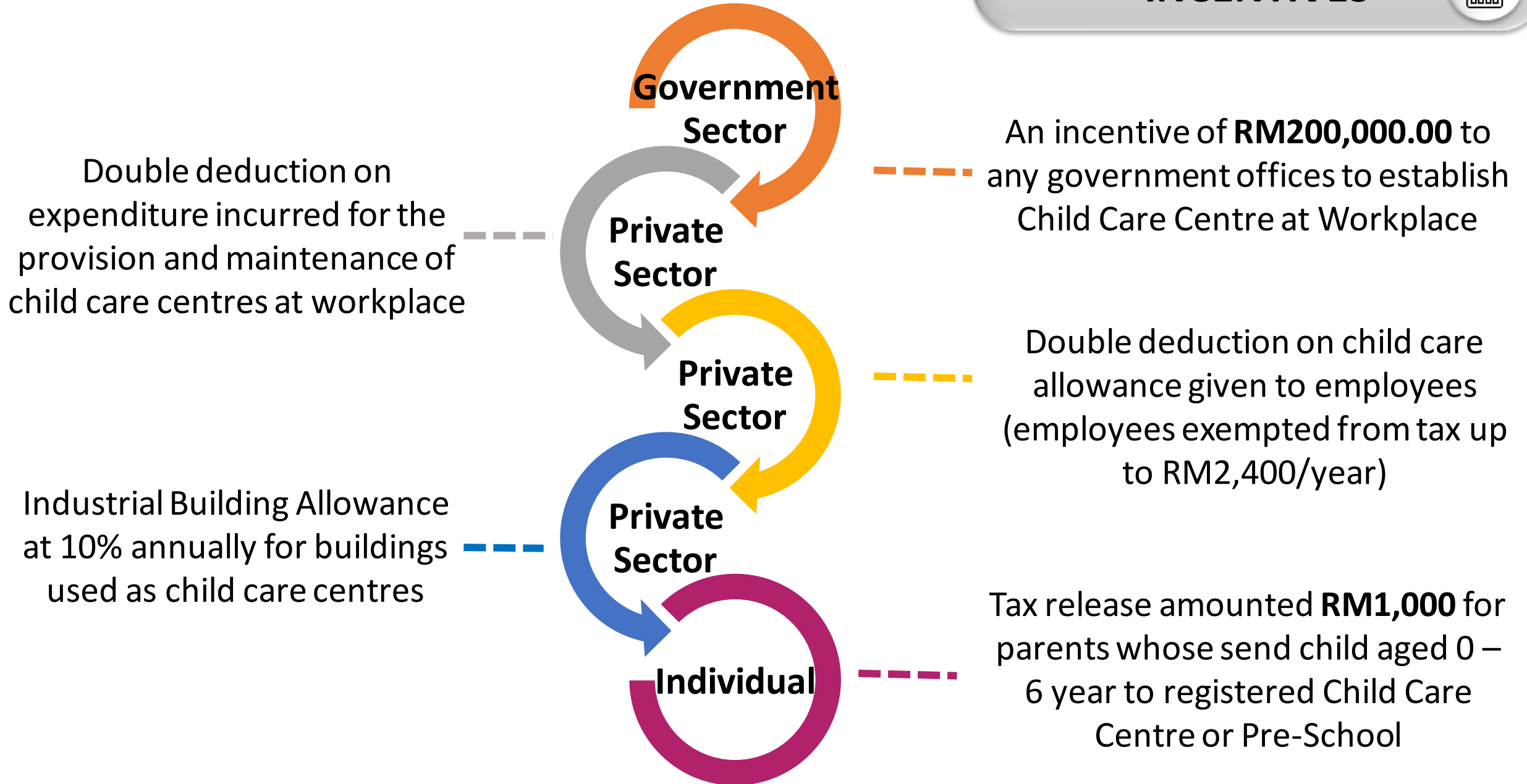
Centre established at workplace or **provided by the employer** at a suitable premise for the convenience of their employees

Child Care Centre for PWD



six categories of disabled - **Down syndrome, autism, blind or partially sighted, hearing and speaking disabilities, physical disability and learning difficulties**

INCENTIVES





GOVERNMENT WORK BASED CHILD CARE CENTRE

A subsidy of **RM180** per month for each child who are sent to registered child care centre in public sector workplace for civil servants whose monthly household income is below RM5,000



A subsidy of **RM250** per month for each child who are send to private registered child care centre for parents with per capita income below RM500 (urban), RM400 (suburban) and RM300 (rural).

PRIVATE CHILD CARE CENTRE

Thank you