

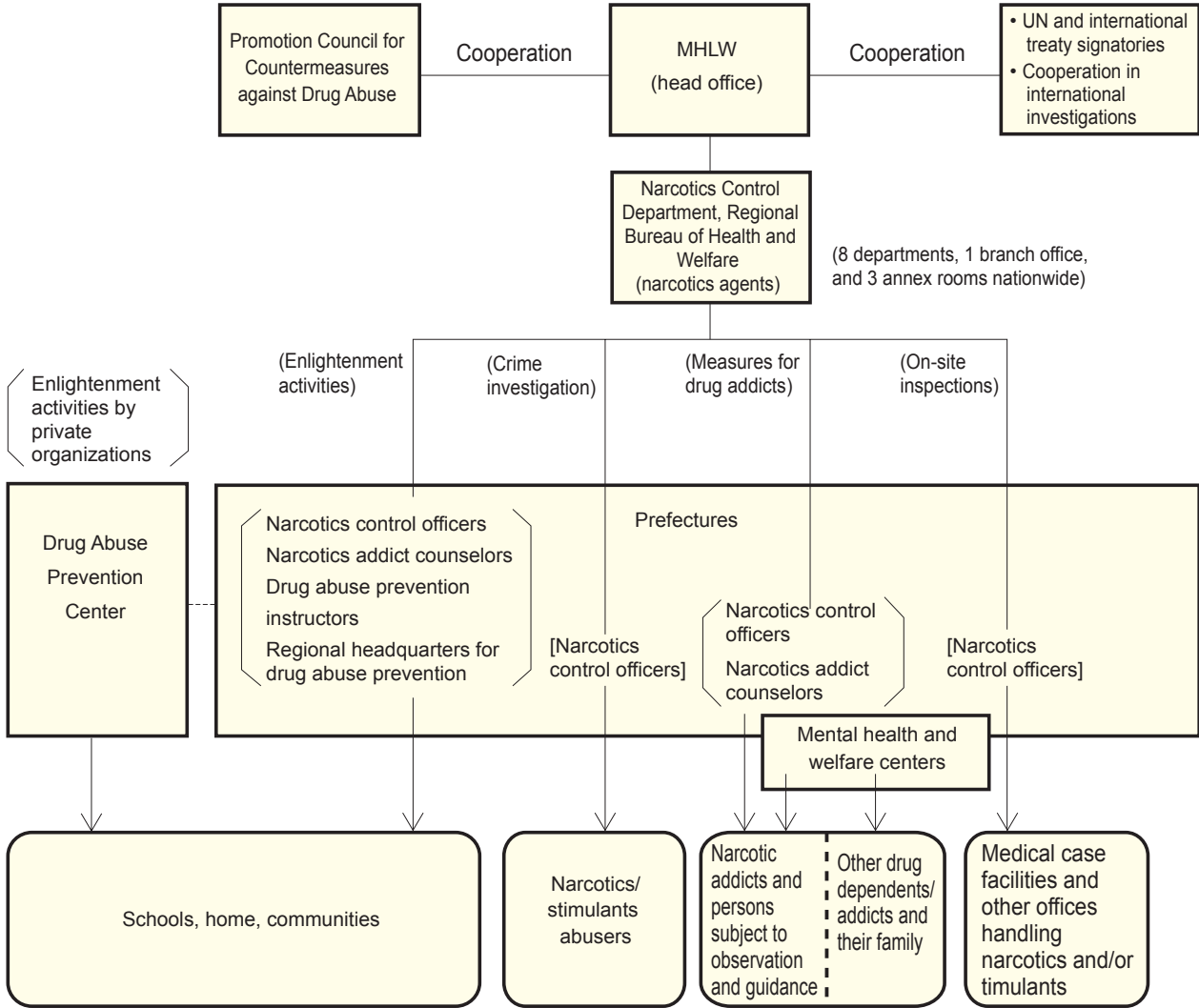
# Narcotics Measures

## Overview

## Recent Situations

- Stimulant offenders account for most of the drug abuse offenders in Japan (approximately 80% of all drug abuse offenders)
- The number of cleared stimulant offenders was 11,873 in 2009
- Cannabis abuse remains at high level

### Structural Chart of Countermeasures against Drug Abuse



While narcotics used as analgesics for cancer patients and psychotropic such as hypnotics and antianxiety drugs have important roles in medicine, they can cause significant harm, if illegally abused, not only to the health of abusers but also to the entire society.

Efforts are therefore being made in taking various measures in a comprehensive manner, including stabilizing the supply and demand of medical narcotics and drug abuse countermeasures such as enhanced enlightenment activities, reinforced law enforcement, promotion of re-abuse prevention, and promotion of international cooperation.

## Detailed Data

## Changes in Drug Crimes

Year	Narcotics and Psychotropic Control Act		Opium Control Act		Cannabis Control Act		Stimulants Control Act	
	Number of cases	Number of persons	Number of cases	Number of persons	Number of cases	Number of persons	Number of cases	Number of persons
1951	1,524	2,208	-	-	18	24	18,711	17,528
1952	1,190	1,642	-	-	39	51	21,727	18,521
1953	1,030	1,462	-	-	8	9	38,763	38,514
1954	1,527	2,092	25	30	16	17	53,221	55,664
1955	1,280	1,753	157	181	42	52	30,670	32,140
1956	1,060	1,575	128	140	27	33	4,876	5,047
1957	1,013	1,365	144	173	25	29	787	781
1958	1,616	2,073	63	76	7	13	268	271
1959	1,394	1,714	137	147	28	30	332	372
1960	1,667	1,987	310	315	9	10	426	476
1961	2,023	2,442	190	199	22	24	459	477
1962	1,773	2,176	203	208	34	34	530	546
1963	2,135	2,571	402	417	144	147	1,061	971
1964	707	792	419	425	158	164	973	860
1965	1,035	1,090	890	902	255	259	885	735
1966	899	974	917	920	157	158	847	694
1967	592	658	702	705	301	298	841	675
1968	298	361	136	1,148	392	410	1,091	775
1969	210	239	377	377	426	413	915	704
1970	212	245	230	230	707	733	2,453	1,682
1971	256	229	207	202	831	717	4,431	2,634
1972	354	341	253	251	853	726	7,702	4,777
1973	455	429	310	287	779	761	14,260	8,510
1974	436	393	176	171	781	720	9,771	6,119
1975	268	232	158	140	971	909	13,590	8,422
1976	195	165	184	185	1,064	960	17,929	10,919
1977	201	125	191	191	1,225	1,096	24,022	14,741
1978	136	102	140	142	1,711	1,253	30,287	18,027
1979	147	103	217	217	1,573	1,314	31,991	18,552
1980	241	158	269	264	1,745	1,433	33,808	20,200
1981	144	98	261	262	1,696	1,346	36,855	22,331
1982	169	100	273	270	1,550	1,244	38,231	23,719
1983	129	89	406	408	1,593	1,231	37,562	23,635
1984	223	132	201	197	1,715	1,391	37,739	24,372
1985	168	138	449	443	1,597	1,273	36,115	23,344
1986	166	118	440	397	1,624	1,337	32,664	21,408
1987	149	99	388	355	1,732	1,395	31,301	20,966
1988	165	126	217	213	2,033	1,570	30,229	20,716
1989	340	248	186	168	1,815	1,470	23,657	16,866
1990	331	240	113	111	2,091	1,620	20,095	15,267
	(2)	(2)						
1991	413	271	120	126	2,020	1,505	22,047	16,330
	(50)	(29)						
1992	485	331	102	91	2,347	1,639	21,208	15,311
	(101)	(55)						
1993	479	353	163	132	2,871	2,055	21,671	15,495
	(111)	(84)						
1994	551	343	254	222	2,675	2,103	20,056	14,896
	(130)	(91)						
1995	572	334	229	172	2,314	1,555	23,731	17,364
	(97)	(64)						
1996	528	275	190	141	2,098	1,306	26,959	19,666
	(107)	(78)						
1997	451	238	222	161	1,874	1,175	27,152	19,937
	(80)	(63)						
1998	565	280	182	134	2,119	1,316	22,753	17,084
	(64)	(44)						
1999	522	286	168	128	1,764	1,224	24,419	18,491
	(75)	(57)						
2000	498	254	122	67	1,815	1,224	26,227	19,156
	(67)	(35)						
2001	586	271	90	49	2,321	1,525	25,060	18,110
	(48)	(42)						
2002	709	327	93	55	2,677	1,873	23,474	16,964
	(59)	(37)						
2003	1,027	530	89	55	2,925	2,173	20,343	14,797
	(52)	(26)						
2004	1,224	635	91	68	3,125	2,312	17,955	12,397
	(77)	(52)						
2005	1,252	606	33	13	2,951	2,063	20,273	13,549
	(43)	(35)						
2006	1,214	611	50	27	3,369	2,423	17,480	11,821
	(48)	(45)						
2007	1,170	542	63	47	3,338	2,375	17,169	12,211
	(125)	(39)						
2008	1,207	601	26	21	3,927	2,867	16,043	11,231
	(45)	(46)						
2009	844	429	34	28	4,057	3,087	16,468	11,873
	(37)	(31)						

Source: Statistics by MHLW, National Police Agency, and Japan Coast Guard  
 (Note) The figures in parentheses indicate the numbers for Psychotropic cases.