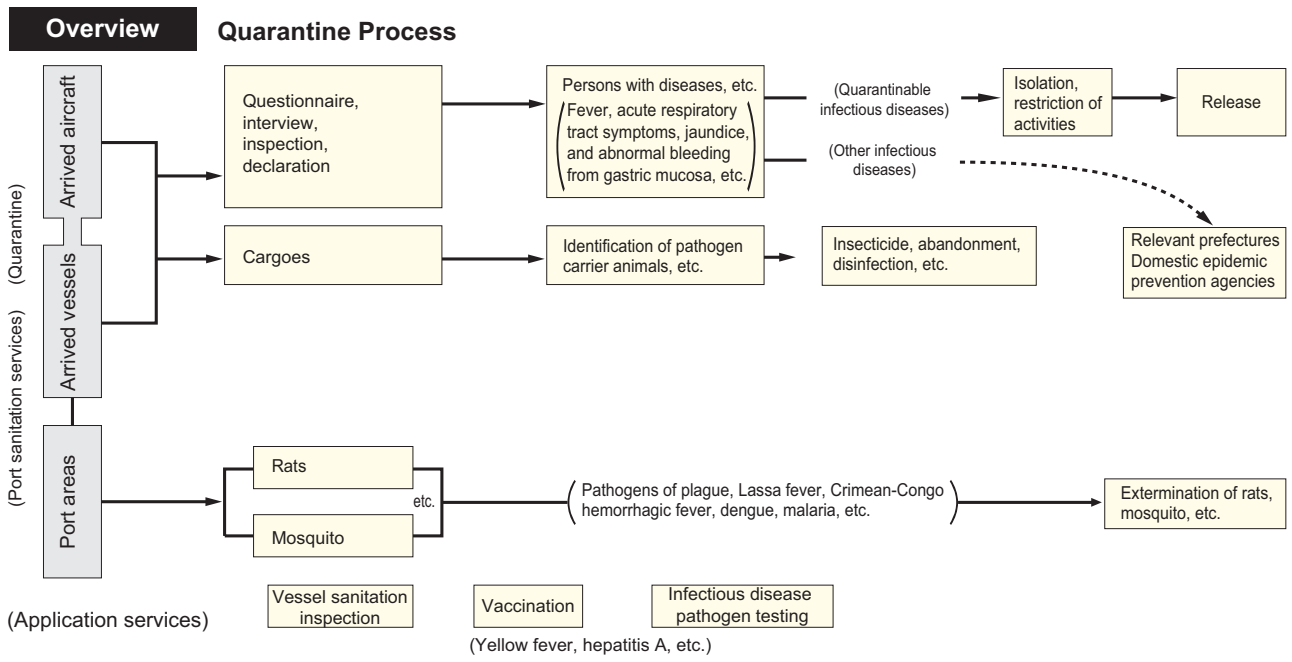


Quarantine Process



Detailed Data 1 Quarantine Station (as of April 1, 2011)

		Seaport	Airport	Total
Main stations	◎	11	2	13
Branch stations	○	7	7	14
Local offices	●	63	20	83
Total		81	29	110
Ports with quarantine stations		89	29	118

Detailed Data 2 Quarantine results (2009)

Quarantined vessels	Quarantined persons	Quarantined aircraft	Quarantined persons
(vessel)	(person)	(aircraft)	(persons)
60,891	1,795,811	167,316	29,058,138

Detailed Data 3 Imported food notification/inspection results (FY2009)

Import	Inspection	Inspection rate	Violation	Violation rate
(case)	(case)	(%)	(case)	(%)
1,821,269	231,638	12.7	1,559	0.1

Source: "Statistics of Imported Food in Japan", Department of Food Safety, Pharmaceutical and Food Safety Bureau, MHLW