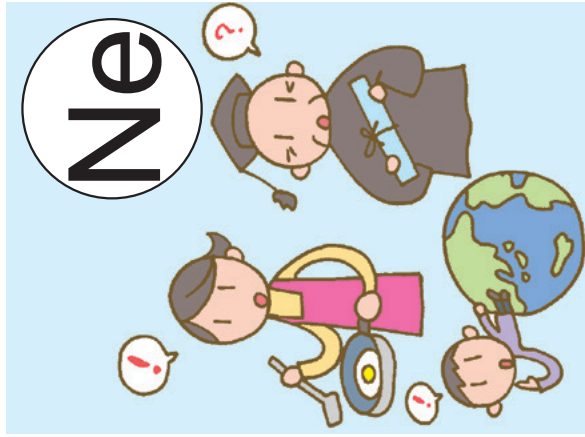
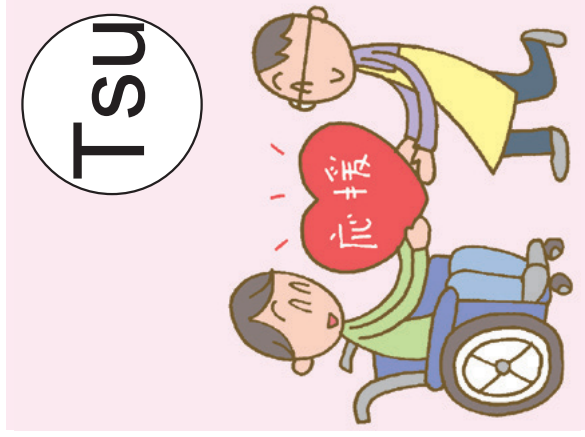


MHLW karuta 5



Ne

Students, non-work-
ing wives and those
who have studied
abroad need special
attention on the
deemed period of
the pension pro-
gram.



Tsu

We would like to
communicate our
wish to support
people with
disabilities
~Improvement in the welfare
service for people with
disabilities~

So



Please recognize
that a woman with
that mark is
pregnant.
~Maternity Mark~

Re



The system to prove
solidarity and to
improve my own
town
~Red Feather Community
Chest Movement~

So

Please recognize
that a woman with
that mark is
pregnant.
~Maternity Mark~

Re

The system to prove
solidarity and to
improve my own
town
~Red Feather Community
Chest Movement~

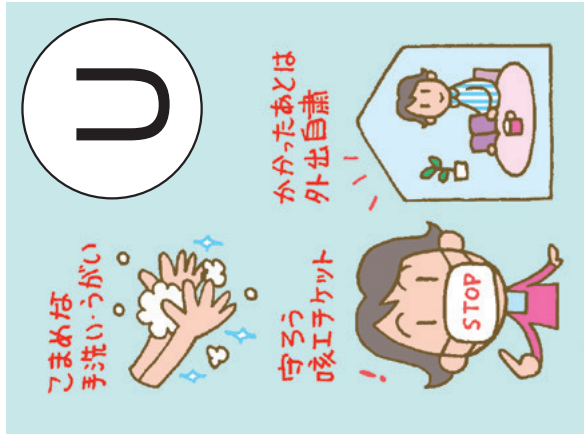
Tsu

We would like to
communicate our
wish to support
people with
disabilities
~Improvement in the welfare
service for people with
disabilities~

Ne

Students, non-work-
ing wives and those
who have studied
abroad need special
attention on the
deemed period of
the pension pro-
gram.

MHLW Karuta 6



U

U

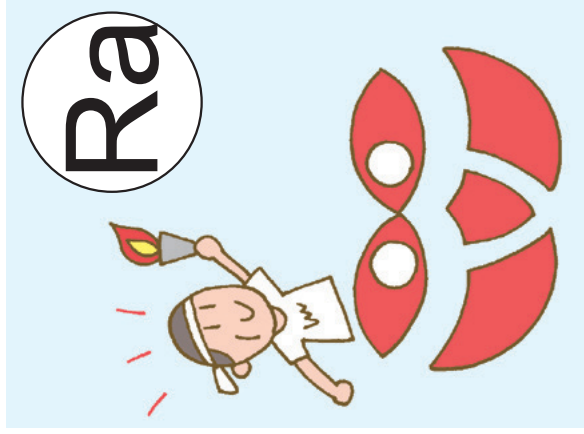
Cough Etiquette to prevent Influenza infection



Mu

Mu

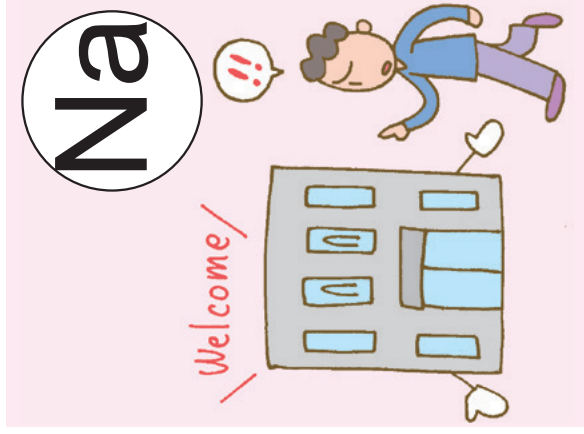
Please check your receipts for medical costs, which are issued for free.



Ra

Ra

Nenrinpic helps to enrich your lives and health with a reason for living.

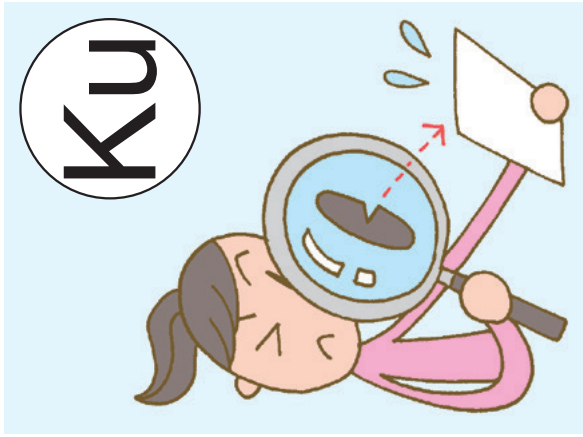


Na

Na

The Supervision Office solves your problems such as wage trouble
~Labour Standards Supervision Office~

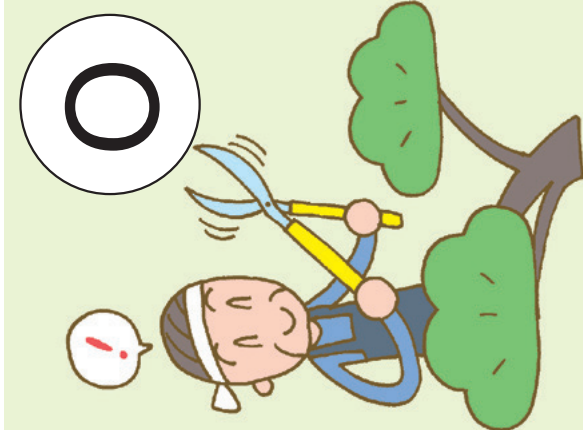
MHLW Karuta 7



Ku

Ku

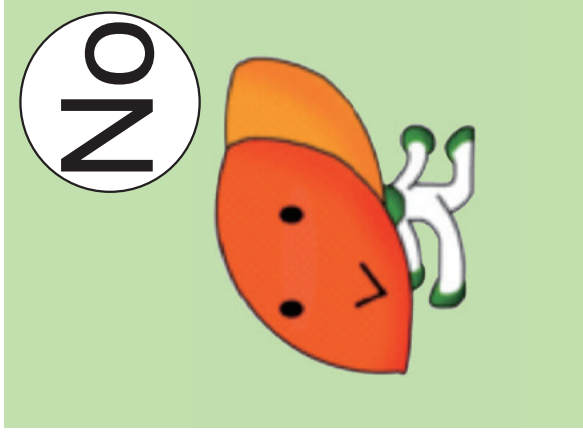
Let's check the minimum wage that supports our life!



O

O

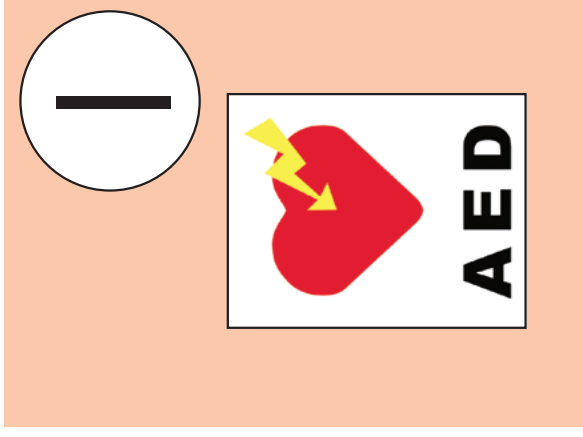
Silver Human Resource Centers to allow the elderly to work actively



No

No

Don't miss a hepatitis virus examination!



I

I

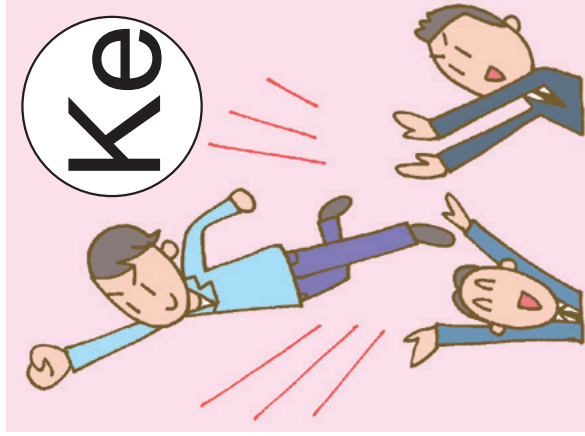
AED to save lives

MHLW Karuta ⑧



Fu

If you have any problems in your daily work, please contact the General Labour Consultation for consultation.
 ~The General Labour Consulting Corner of the Labour Bureau~



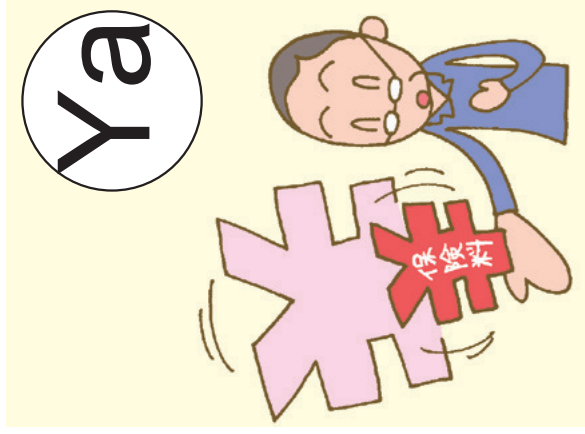
Ke

The Support Station assists the young people even if they are inexperienced.
 ~Support for vocational independence of the NEETs, etc. ~



Ma

If you have trouble making a living, please contact the welfare office first for assistance.



Ya

The National Health Insurance contribution will be lowered when you are forced to lose your job.

Ya

Ma

Ke

Fu