

## [3] Living Environment

### Food Safety Administration

#### Overview

#### Measures to Ensure Food Safety (Risk Analysis)

#### Risk analysis

- Risk analysis means a methodology for preventing accidents and minimizing risks to the greatest extent possible, rather than simply dealing with after an accident, with the aim of protecting the health of the general public when there is a possibility that the general public or a certain group of people may be exposed to a hazard.

#### Risk assessment

##### Food Safety Commission (FSC)

- Implementation of risk assessments  
If a substance that may have a negative impact on health is contained in food, assess the probability and degree of the negative impact.

Food Safety Basic Act

#### Risk management

##### Ministry of Health, Labour and Welfare (MHLW)

- Preventing the occurrence of food-related hygiene hazards
- Monitoring to ensure that standards and criteria are followed

Food Sanitation Act, etc.

##### Ministry of Agriculture, Forestry and Fisheries (MAFF)

- Securing safety through improvements in the production, distribution, and consumption of agricultural, forestry, and fishery products
- Restrictions on production materials, such as fertilizers, agricultural chemicals, animal feed, and veterinary drugs

Agricultural Chemicals Regulation Act  
Act on Safety Assurance and Quality Improvement of Feeds, etc.

##### Consumer Affairs Agency (CAA)

- Formulating standards and criteria for food sanitation
- Setting standards for food labeling
- Monitoring to ensure that labeling standards are being followed

Food Sanitation Act  
Food Labeling Act, etc.

#### Risk communication

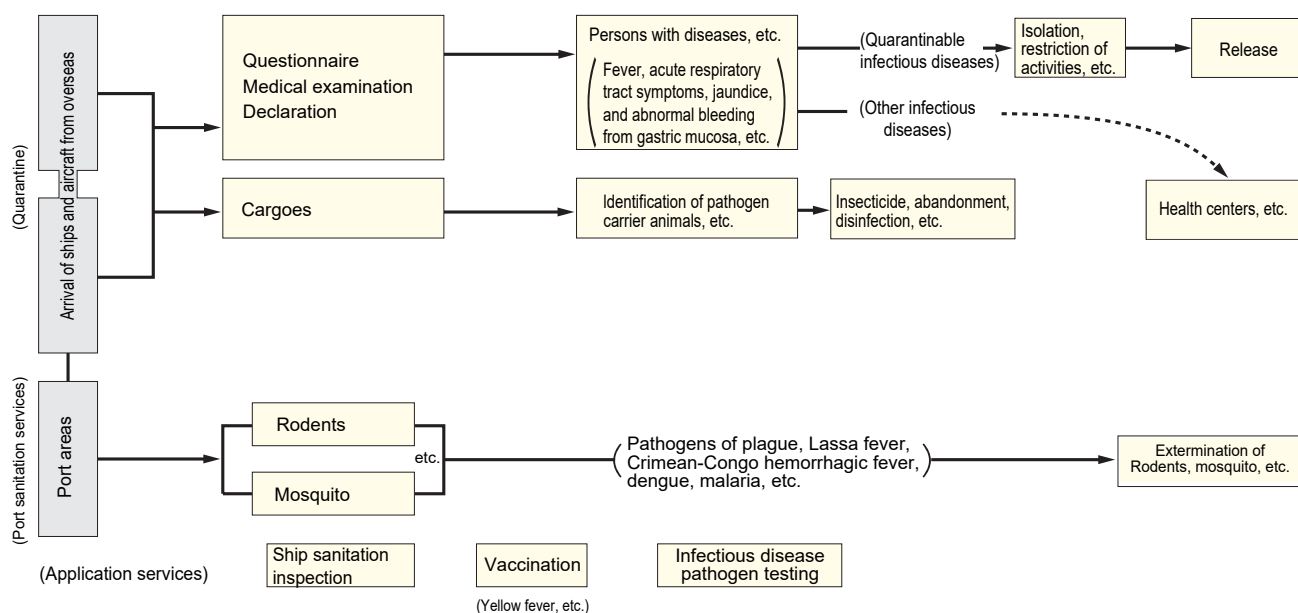
- Provide information related to food safety
- Ensure opportunities for stakeholders including consumers to express their opinions

Total  
Coordination by CAA

## Quarantine Process

### Overview

### Quarantine Process



### Detailed Data 1

### Quarantine Station (as of April 1, 2024)

Item	Seaport	Airport	Total
Quarantine Stations	11	2	13
Branch Offices	7	7	14
Detached Offices	62	22	84
Total	80	31	111
Quarantine Ports and Quarantine Airports	89	31	120

### Detailed Data 2

### Quarantine results (2022)

Quarantined vessels	Quarantined persons	Quarantined aircraft	Quarantined persons
(vessel)	(person)	(aircraft)	(person)
41,247	753,838	107,226	9,890,789

### Detailed Data 3

### Imported food notification/inspection results (FY2022)

Number of notifications	Number of inspections	Inspection rate	Number of violations	Violation rate
2,400,309	202,671	% 8.4	781	% 0.03

Source: "Statistics of Imported Foods Monitoring," Public Health Bureau, MHLW

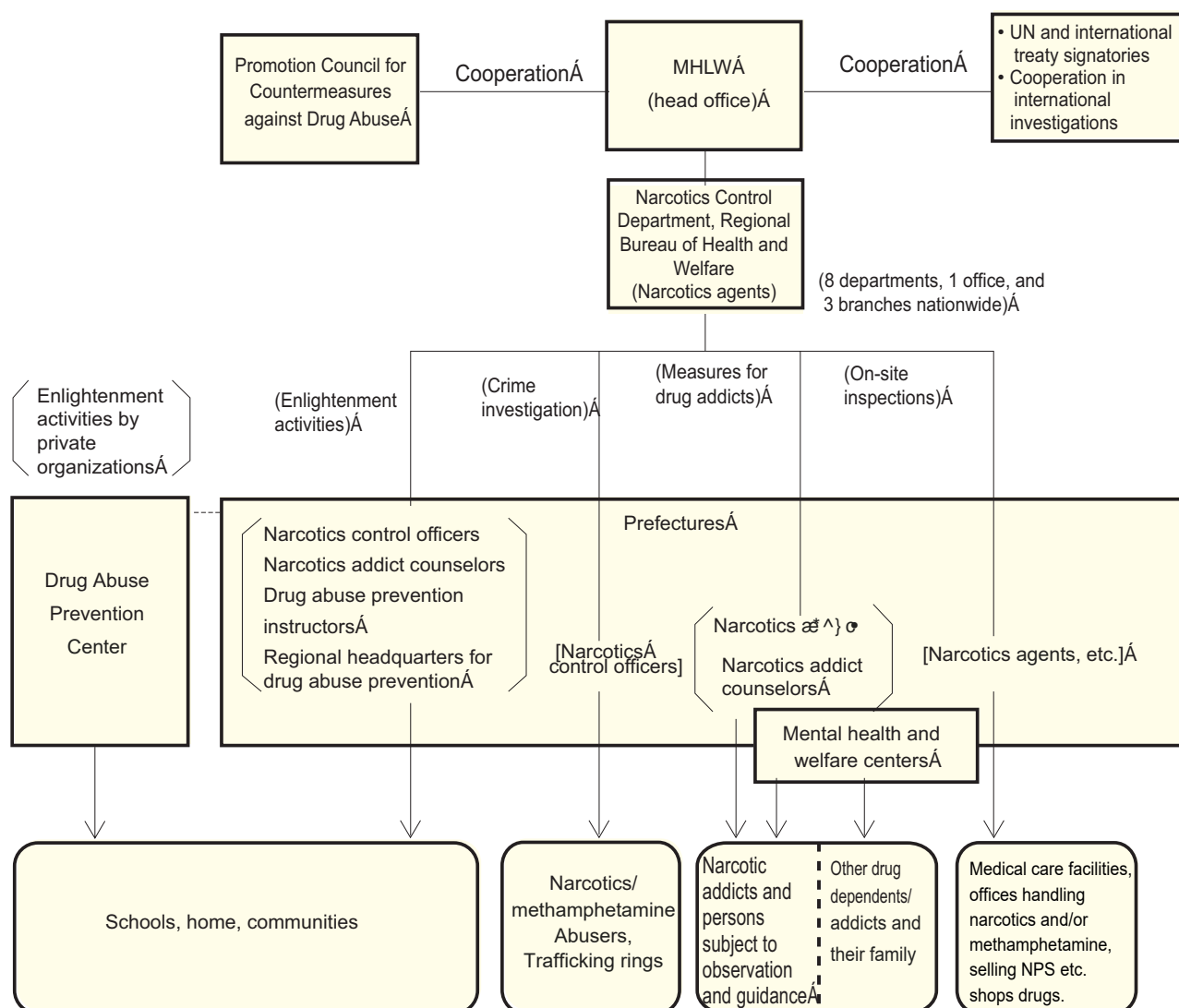
Narcotics Measures	
--------------------	--

## Overview

Ü^&amp;^} œÛœ æǣ } • Á

[illegible]

### Structural Chart of Countermeasures against Drug Abuse



While narcotics used as analgesics for cancer patients and psychotropics such as hypnotics and antianxiety drugs have important roles in medicine, they can cause significant harm, if illegally abused, not only to the health of abusers but also to the entire society.

Efforts are therefore being made in taking various measures in a comprehensive manner, including stabilizing the supply and demand of medical narcotics and drug abuse countermeasures such as enhanced enlightenment activities, reinforced law enforcement, promotion of re-abuse prevention, and promotion of international cooperation.Á

## Detailed Data Changes in Drug Crimes

Year	Narcotics and Psychotropics Control Act		Opium Control Act		Cannabis Control Act		Stimulants (methamphetamine) Control Act	
	Number of cases	Number of persons	Number of cases	Number of persons	Number of cases	Number of persons	Number of cases	Number of persons
1951	1,524	2,208	-	-	18	24	18,711	17,528
1952	1,190	1,642	-	-	39	51	21,727	18,521
1953	1,030	1,462	-	-	8	9	38,763	38,514
1954	1,527	2,092	25	30	16	17	53,221	55,664
1955	1,280	1,753	157	181	42	52	30,670	32,140
1956	1,060	1,575	128	140	27	33	4,876	5,047
1957	1,013	1,365	144	173	25	29	787	781
1958	1,616	2,073	63	76	7	13	268	271
1959	1,394	1,714	137	147	28	30	332	372
1960	1,667	1,987	310	315	9	10	426	476
1961	2,023	2,442	190	199	22	24	459	477
1962	1,773	2,176	203	208	34	34	530	546
1963	2,135	2,571	402	417	144	147	1,061	971
1964	707	792	419	425	158	164	973	860
1965	1,035	1,090	890	902	255	259	885	735
1966	899	974	917	920	157	158	847	694
1967	592	658	702	705	301	298	841	675
1968	298	361	136	1,148	392	410	1,091	775
1969	210	239	377	377	426	413	915	704
1970	212	245	230	230	707	733	2,453	1,682
1971	256	229	207	202	831	717	4,431	2,634
1972	354	341	253	251	853	726	7,702	4,777
1973	455	429	310	287	779	761	14,260	8,510
1974	436	393	176	171	781	720	9,771	6,119
1975	268	232	158	140	971	909	13,590	8,422
1976	195	165	184	185	1,064	960	17,929	10,919
1977	201	125	191	191	1,225	1,096	24,022	14,741
1978	136	102	140	142	1,711	1,253	30,287	18,027
1979	147	103	217	217	1,573	1,314	31,991	18,552
1980	241	158	269	264	1,745	1,433	33,808	20,200
1981	144	98	261	262	1,696	1,346	36,855	22,331
1982	169	100	273	270	1,550	1,244	38,231	23,719
1983	129	89	406	408	1,593	1,231	37,562	23,635
1984	223	132	201	197	1,715	1,391	37,739	24,372
1985	168	138	449	443	1,597	1,273	36,115	23,344
1986	166	118	440	397	1,624	1,337	32,664	21,408
1987	149	99	388	355	1,732	1,395	31,301	20,966
1988	165	126	217	213	2,033	1,570	30,229	20,716
1989	340	248	186	168	1,815	1,470	23,657	16,866
1990	331	240	113	111	2,091	1,620	20,095	15,267
	(2)	(2)						
1991	413	271	120	126	2,020	1,505	22,047	16,330
	(50)	(29)						
1992	485	331	102	91	2,347	1,639	21,208	15,311
	(101)	(55)						
1993	479	353	163	132	2,871	2,055	21,671	15,495
	(111)	(84)						
1994	551	343	254	222	2,675	2,103	20,056	14,896
	(130)	(91)						
1995	572	334	229	172	2,314	1,555	23,731	17,364
	(97)	(64)						
1996	528	275	190	141	2,098	1,306	26,959	19,666
	(107)	(78)						
1997	451	238	222	161	1,874	1,175	27,152	19,937
	(80)	(63)						
1998	565	280	182	134	2,119	1,316	22,753	17,084
	(64)	(44)						
1999	522	286	168	128	1,764	1,224	24,419	18,491
	(75)	(57)						
2000	498	254	122	67	1,815	1,224	26,227	19,156
	(67)	(35)						
2001	586	271	90	49	2,321	1,525	25,060	18,110
	(48)	(42)						
2002	709	327	93	55	2,677	1,873	23,474	16,964
	(59)	(37)						
2003	1,027	530	89	55	2,925	2,173	20,343	14,797
	(52)	(26)						
2004	1,224	635	91	68	3,125	2,312	17,955	12,397
	(77)	(52)						
2005	1,252	606	33	13	2,951	2,063	20,273	13,549
	(43)	(35)						
2006	1,214	611	50	27	3,369	2,423	17,480	11,821
	(48)	(45)						
2007	1,170	542	63	47	3,338	2,375	17,169	12,211
	(125)	(39)						
2008	1,207	601	26	21	3,927	2,867	16,043	11,231
	(45)	(46)						
2009	844	429	34	28	4,057	3,087	16,468	11,873
	(37)	(31)						
2010	760	375	30	23	3,151	2,367	17,163	12,200
	(56)	(43)						
2011	669	346	16	12	2,402	1,759	17,109	12,083
	(79)	(63)						
2012	599	341	8	6	2,311	1,692	16,689	11,842
	(77)	(59)						
2013	920	540	11	9	2,144	1,616	15,472	11,127
	(62)	(56)						
2014	706	452	24	24	2,416	1,813	15,571	11,148
	(47)	(49)						
2015	813	516	7	4	2,825	2,167	16,168	11,200
	(69)	(42)						
2016	878	505	12	7	3,600	2,722	15,374	10,607
	(99)	(105)						
2017	921	505	12	12	4,192	3,218	14,496	10,284
	(70)	(75)						
2018	974	528	7	2	4,867	3,762	14,289	10,030
	(65)	(67)						
2019	1,068	558	4	2	5,652	4,570	12,155	8,730
	(109)	(80)						
2020	1,156	638	15	15	6,213	5,260	12,292	8,654
	(61)	(49)						
2021	1,091	639	17	16	7,169	5,783	11,809	7,970
	(71)	(35)						
2022	1,298	783	3	3	6,888	5,546	9,012	6,289
	(128)	(41)						

Source: Statistics by MHLW, National Police Agency, and Japan Coast Guard  
 (Note) The figures in parentheses indicate the numbers for Psychotropic cases.

# Water Supply Administration

## Overview

## Outline of Water Supply Administration

The Water Supply Act sets standards for water quality and water supply facilities and specifies rules for the operation and management of the water supply service to ensure a stable supply of safe water.

## Detailed Data 1

## Types of Water Supply Systems, FY 2022

(As of March 31, 2023)

Type	Description	Systems	Current population supplied
Water supply systems (Section 3 [2], Water Supply Act)	Supply of water for general needs through the systems (Excluding supplies for populations of 100 or less)		
Waterworks (Section 3 [3], Water Supply Act)	Supply for populations of more than 5,000	1,299	120,510,000
Simplified waterworks (Section 3 [3], Water Supply Act)	Supply for populations of 5,000 or less	2,376	1,620,000
Sub-total		3,675	122,130,000
Bulk water supply systems (Section 3 [4], Water Supply Act)	Wholesale of service water to waterworks suppliers	89	—
Private water supply systems (Section 3 [6], Water Supply Act)	Water supply for more than 100 residents in dormitories, company housing, etc. or water supply with a maximum daily water supply volume of more than 20 m <sup>3</sup>	8,172	400,000
Total		11,936	122,530,000

Source: Survey by Water Supply Division, MHLW

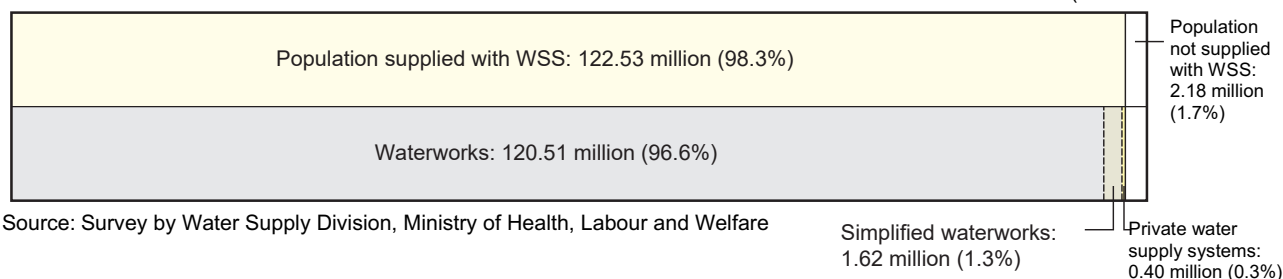
(Note) Due to the Great East Japan Earthquake and the accident at the Tokyo Electric Power Company Fukushima Daiichi Nuclear Power Station, some towns and villages including the following in Fukushima Prefecture were unable to submit water supply population data for FY 2022.

- Areas where evacuation instructions have been issued are included in the water supply area, so the current population supplied with water cannot be calculated.  
→ Tomioka, Okuma\*, Futaba  
\* For Okuma town, only the current population supplied by a private water supply system that only uses its own water source was submitted
- Areas that are outside of the evacuation order zone but for which the current population supplied with water cannot be calculated  
→ Hirono, Naraha

## Detailed Data 2

## Breakdown of the Population Covered by Water Supply System (WSS)

(As of the end of FY2022)



Source: Survey by Water Supply Division, Ministry of Health, Labour and Welfare

**Detailed Data 3**
**Changes in Volume of Water Supply in Waterworks**

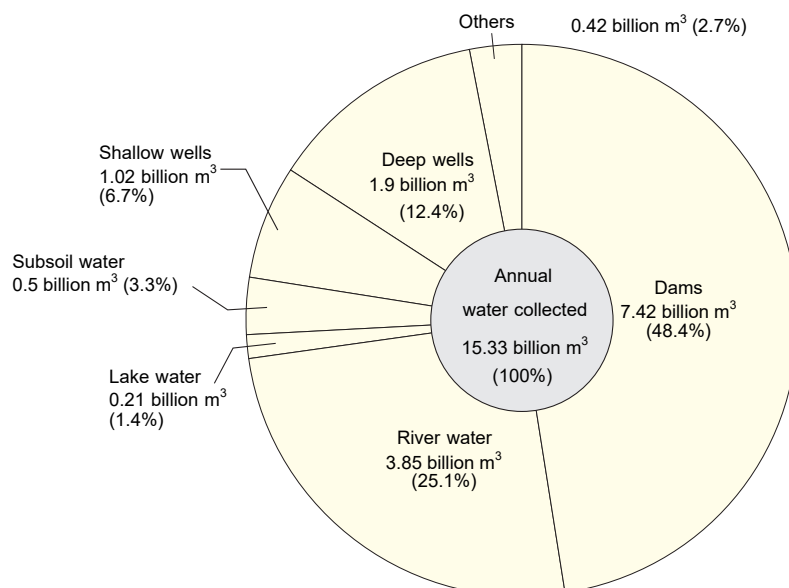
	1975	1980	1985	1990	1995	2000	2005	2010	2015	2016	2017	2018	2019	2020	2021
Total population (1,000 persons)	112,279	116,860	121,005	123,557	125,424	126,901	127,709	128,000	127,102	126,914	126,721	126,437	126,178	125,774	125,177
Population supplied with waterworks (1,000 persons)	88,065	97,620	104,135	108,885	112,496	115,533	117,788	119,505	119,996	120,230	121,312	121,385	121,351	123,393	122,903
Average volume per day (1,000 m <sup>3</sup> )	32,871	35,623	39,498	43,348	44,423	44,350	42,932	41,482	39,739	39,819	40,416	40,288	39,978	40,422	39,962
Average volume per day per person (L)	372	361	376	394	391	381	363	346	330	330	332	331	328	332	330
Maximum volume per day (1,000 m <sup>3</sup> )	42,211	45,500	50,193	54,149	54,635	53,103	50,054	48,149	46,432	44,920	46,085	45,719	44,693	45,696	44,462
Maximum volume per day per person (L)	480	461	477	493	482	457	423	401	386	372	379	375	366	375	366

Source: Waterworks Statistics, FY2021 (Japan Water Works Association)

**Detailed Data 4**
**Percentage Distribution of Source of Water Supply**

(Total of waterworks + bulk water supply systems)

(FY2021)



Source: Waterworks Statistics, FY2021 (Japan Water Works Association)

## Detailed Data 5 Water Quality Standards Items and Values

No.	Item	Standard value
1	Common Bacteria	Not more than 100 colonies formed per 1mL
2	Escherichia coli	Not to be detected
3	Cadmium and compounds	0.003 mg/L or less (amount of cadmium)
4	Mercury and compounds	0.0005 mg/L or less (amount of mercury)
5	Selenium and compounds	0.01 mg/L or less (amount of selenium)
6	Lead and compounds	0.01 mg/L or less (amount of lead )
7	Arsenic and compounds	0.01 mg/L or less (amount of arsenic)
8	Chromium [VI] compounds	0.02 mg/L or less (amount of chromium [VI] )
9	Nitrite nitrogen	0.04 mg/L or less
10	Cyanide ion and Cyanogen chloride	0.01 mg/L or less (amount of cyanogen)
11	Nitrate and Nitrite	10 mg/L or less
12	Fluorine and compounds	0.8 mg/L or less (amount of fluorine)
13	Boron and compounds	1.0 mg/L or less (amount of boron)
14	Carbon tetrachloride	0.002 mg/L or less
15	1,4-dioxane	0.05 mg/L or less
16	cis-1,2-Dichloroethylene and trans-1,2-Dichloroethylene	0.04 mg/L or less
17	Dichloromethane	0.02 mg/L or less
18	Tetrachloroethylene	0.01 mg/L or less
19	Trichloroethylene	0.01 mg/L or less
20	Benzene	0.01 mg/L or less
21	Chlorate	0.6 mg/L or less
22	Chloroacetic acid	0.02 mg/L or less
23	Chloroform	0.06 mg/L or less
24	Dichloroacetic acid	0.03 mg/L or less
25	Dibromochloromethane	0.1 mg/L or less
26	Bromate	0.01 mg/L or less
27	Total trihalomethane (Total concentration of Chloroform, Dibromochloromethane, Bromodichloromethane and Bromoform)	0.1 mg/L or less
28	Trichloroacetic acid	0.03 mg/L or less
29	Bromodichloromethane	0.03 mg/L or less
30	Bromoform	0.09 mg/L or less
31	Formaldehyde	0.08 mg/L or less
32	Zinc and compounds	1.0 mg/L or less (amount of zinc)
33	Aluminum and compounds	0.2 mg/L or less (amount of aluminum)
34	Iron and compounds	0.3 mg/L or less (amount of iron)
35	Copper and compounds	1.0 mg/L or less (amount of copper)
36	Sodium and compounds	200 mg/L or less (amount of sodium)
37	Manganese and compounds	0.05 mg/L or less (amount of manganese)
38	Chloride ion	200 mg/L or less
39	Calcium, Magnesium (Hardness)	300 mg/L or less
40	Total residue	500 mg/L or less
41	Anionic surface active agent	0.2 mg/L or less
42	(4S,4aS, 8aR)-Octahydro-4,8a-Dimethylenaphtalen-4a(2H)ol (Alias: Geosmin)	0.00001 mg/L or less
43	1,2,7,7-Tetramethylbicyclo [2,2,1]Heptane -2-ol (Alias: 2-Methylisobolneol)	0.00001 mg/L or less
44	Nonionoc surface active agent	0.02 mg/L or less
45	Phenols	0.005 mg/L or less (converted to the amount of phenols)
46	Organic substances (Total Organic Carbon)	3 mg/L or less
47	pH Value	5.8-8.6
48	Taste	Not abnormal
49	Odor	Not abnormal
50	Color	5 degrees or less
51	Turbidity	2 degrees or less

(Enforced in April 1, 2020)

## Detailed Data 6 Percentage Distribution of Water Treatment Methods (based on annual water treatment)

Disinfection treatment only	Slow sand filtration	Rapid sand filtration	Membrane filtration	Advanced water treatment and others (included)
16.7%	3.2%	77.4%	2.7%	44.0%

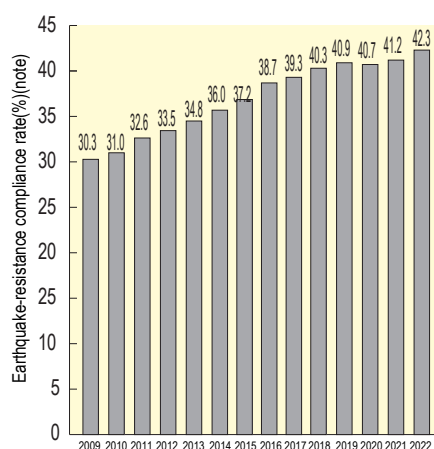
Advanced water treatment facilities are supplementary to disinfection treatment only, slow sand filtration, rapid sand filtration, and membrane filtration facilities and thus the figure is given as a included number. “Advanced water treatment” includes ozonation, activated carbon treatment, biological treatment, and aeration, etc.

(As of the end of FY 2021)

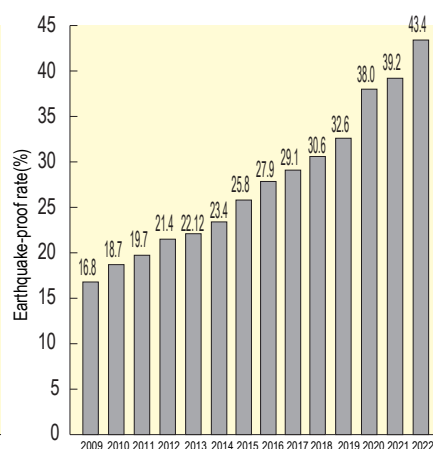
Source: Waterworks Statistics, FY 2021 (Japan Water Works Association)

## Detailed Data 7 Status with Earthquake-Resistance of Waterworks

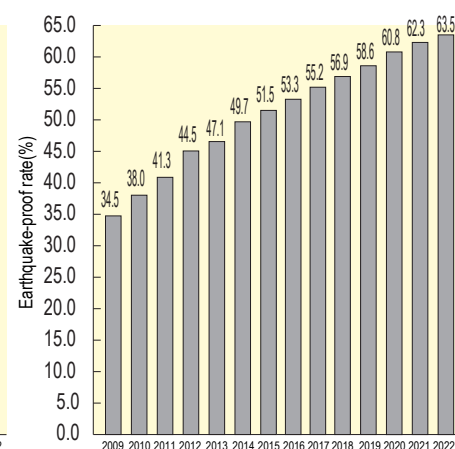
### Core pipeline networks



### Water treatment facilities



### Reservoirs



Source: Survey by Water Supply Division, Ministry of Health, Labour and Welfare

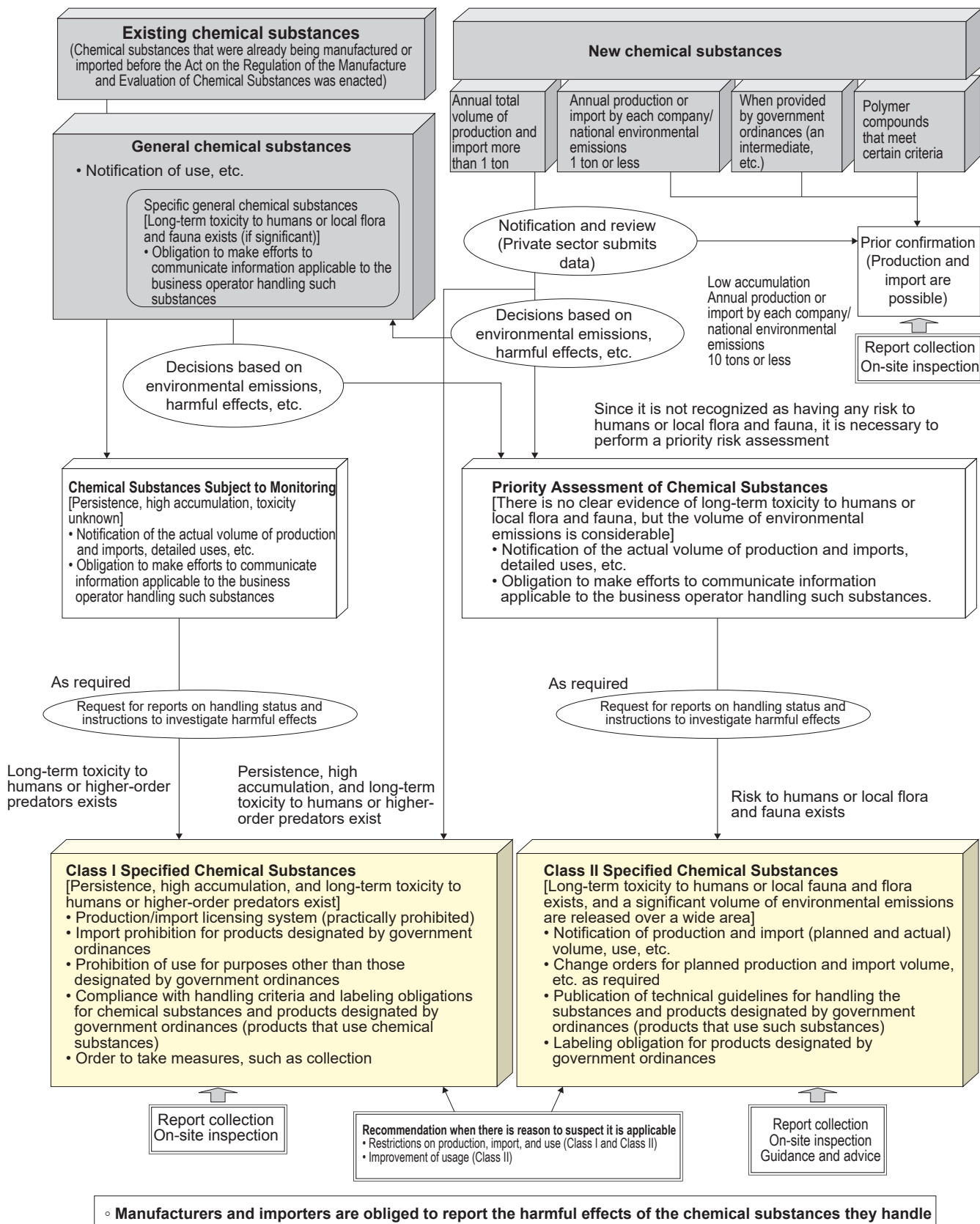
(Note) Percentage of pipes other than seismic pipes and seismic pipes that can be evaluated as seismic resistant if the properties of the ground are taken into consideration



# Chemical Substance Safety Measures

## Overview

## Outline of the Act on the Regulation of Manufacture and Evaluation of Chemical Substances

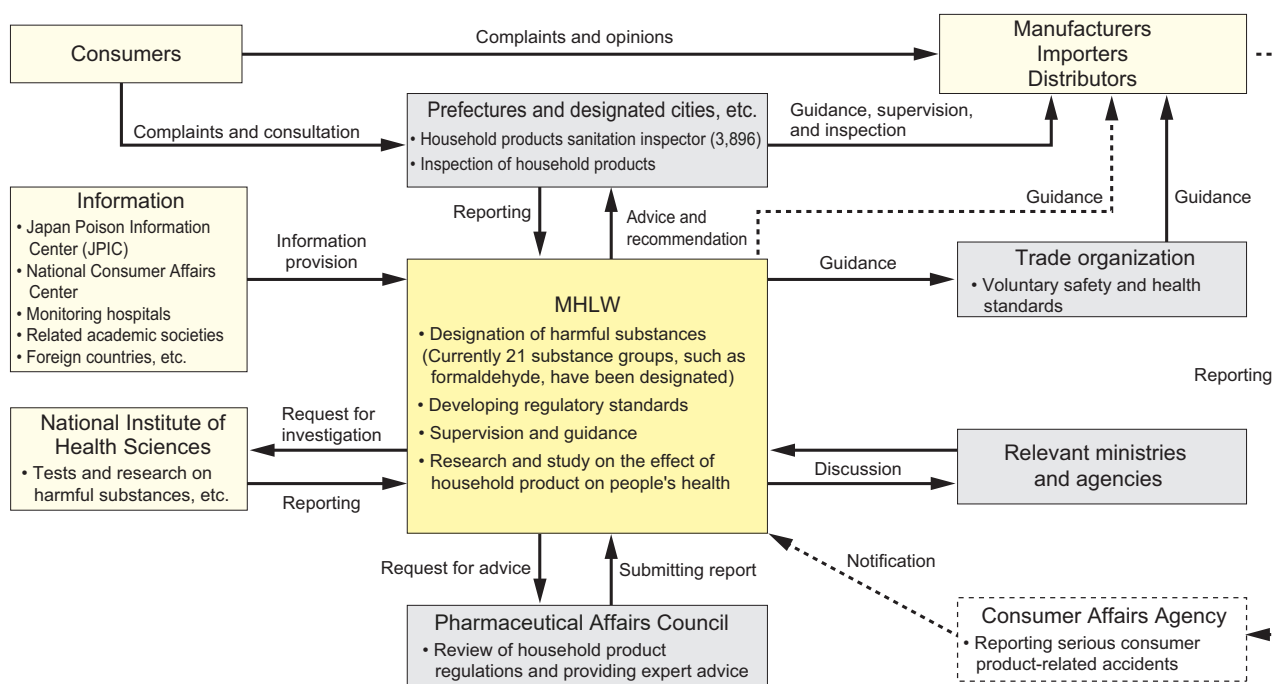


## Household Product Safety Measures

### Overview

### Outline of the Control System of Household Products Containing Harmful Substances

For the purpose of preventing health hazards caused by chemical substances contained in household products such as cleaners and aerosol products (atomizing corpuscular contents in the air) as well as textile products for clothing. The Ministry of Health, Labour and Welfare is authorized to designate products as containing "harmful substances" in accordance with the Act on Control of Household Products Containing Harmful Substances. Moreover, the Ministry sets forth standards for regulating the quantity of such harmful substances in household products that contain them so as to ensure the safety of household products.



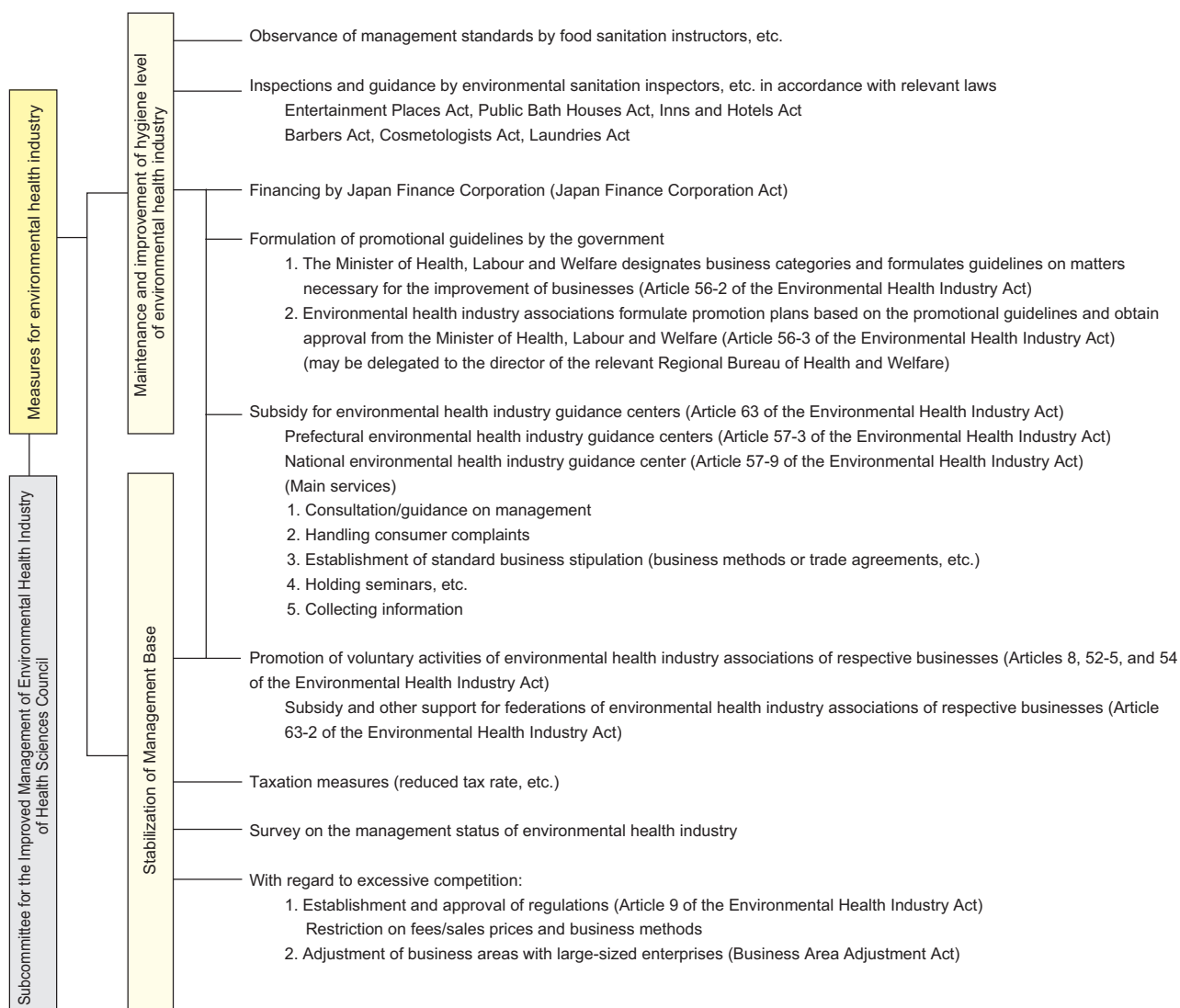
(Note) The number of household products sanitation inspectors is as of the end of March , 2022.

\* - Obligation in accordance with the Consumer Product Safety Act

# Environmental Health Industry

## Overview

## Structural Chart of Measures for Improvement of Environmental Health Industry



# Detailed Data Changes in Number of Environmental Health Industry Facilities (Actual Numbers)

	2007	2008	2009	2010 <sup>1)</sup>	2011	2012	2013	2014	2015	2016	2017	2018	2019	2020	2021	2022
Total	2,535,169	2,506,214	2,482,593	2,423,076	2,426,109	2,407,526	2,393,457	2,377,658	2,366,846	2,350,594	2,344,247	2,335,781	2,329,864	2,309,385	2,280,433	2,257,729
Entertainment places	4,987	4,959	4,921	4,849	4,855	4,806	4,782	4,745	4,785	4,747	4,760	4,776	4,814	4,802	4,809	4,797
Regrouped { Movie theater	1,761	1,750	1,702	1,654	1,602	1,539	1,524	1,496	1,490	1,448	1,475	1,468	1,451	1,467	1,464	1,464
Sports facilities	392	401	394	373	382	373	364	360	355	356	357	360	373	373	378	377
Others	2,834	2,808	2,825	2,822	2,871	2,894	2,894	2,889	2,940	2,943	2,928	2,948	2,990	2,962	2,967	2,956
Hotels and inns	85,566	84,411	82,952	81,087	81,404	80,412	79,519	78,898	78,519	79,842	82,150	85,617	88,983	89,159	89,715	90,705
Regrouped { Hotels and inns <sup>2)</sup>	61,737	60,449	58,654	56,616	56,059	54,540	53,172	51,778	50,628	49,590	49,024	49,502	51,004	50,703	50,523	50,321
Hotels	9,442	9,603	9,688	9,710	9,863	9,796	9,809	9,879	9,967	10,101	10,402	.	.	.	.	.
Inns	52,295	50,846	48,966	46,906	46,196	44,744	43,363	41,899	40,661	39,489	38,622	.	.	.	.	.
Lodging houses	22,900	23,050	23,429	23,719	24,506	25,071	25,560	26,349	27,169	29,559	32,451	35,452	37,308	37,847	38,593	39,811
Boardinghouses	929	912	869	752	839	801	787	771	722	693	675	663	671	609	599	573
Public bath houses	28,792	28,523	28,154	27,653	27,557	27,074	26,580	26,221	25,703	25,331	25,121	24,785	24,531	23,954	23,780	23,694
Regrouped { Ordinary public bath houses	6,009	5,722	5,494	5,449	5,189	4,804	4,542	4,293	4,078	3,900	3,729	3,535	3,398	3,231	3,120	3,000
Private room style	1,367	1,406	1,358	1,364	1,394	1,370	1,384	1,382	1,419	1,432	1,447	1,427	1,435	1,416	1,424	1,415
Health centers	2,331	2,340	2,355	2,346	2,220	2,337	2,113	2,135	2,192	2,006	1,961	1,900	1,873	1,833	1,798	1,745
Sauna baths	2,334	2,276	2,082	1,975	1,883	1,820	1,686	1,620	1,560	1,482	1,459	1,413	1,407	1,365	1,420	1,563
Sports facilities	3,090	3,241	3,238	3,251	3,255	3,271	3,337	3,313	3,374	3,417	3,444	3,469	3,499	3,473	3,424	3,410
Others	13,661	13,538	13,627	13,268	13,616	13,472	13,518	13,478	13,080	13,094	13,081	13,041	12,919	12,636	12,594	12,561
Barber shops	136,768	135,615	134,552	130,755	131,687	130,210	128,127	126,546	124,584	122,539	120,965	119,053	117,266	115,456	114,403	112,468
Beauty salons	219,573	221,394	223,645	223,277	228,429	231,134	234,089	237,525	240,299	243,360	247,578	251,140	254,422	257,890	264,223	269,889
Laundries	141,190	137,097	133,584	126,925	123,845	118,188	113,567	108,513	104,180	99,709	96,041	91,942	88,105	83,700	80,162	76,300
Regrouped { Laundry shops (Excluding agents.)	39,632	38,165	37,393	35,330	34,767	33,106	32,005	30,371	29,423	27,847	26,992	25,713	24,727	23,403	22,580	21,299
Agent stores	101,191	98,586	95,805	90,825	87,386	83,274	79,773	76,341	72,888	69,929	67,110	64,266	61,316	58,138	55,419	52,784
Non-store agents <sup>3)</sup>	367	346	386	770	1,692	1,808	1,789	1,801	1,869	1,933	1,939	1,963	2,062	2,159	2,163	2,217
Restaurants <sup>4)</sup>	1,479,218	1,457,371	1,446,479	1,419,489	1,424,504	1,424,792	1,425,737	1,422,809	1,424,920	1,420,492	1,420,182	1,417,904	1,418,627	1,406,938	1,412,954	1,415,983
Coffee shops	291,587	292,889	285,967	270,933	263,925	249,670	238,510	228,720	220,138	209,604	201,385	194,085	187,373	174,598	100,566	69,260
Vending machine with cooking function	.	.	.	.	.	.	.	.	.	.	.	.	.	.	1,531	3,573
Cup-type vending machine (automatic cleaning and indoor installation)	.	.	.	.	.	.	.	.	.	.	.	.	.	.	62,622	81,416
Meat sales <sup>5)</sup>	144,981	141,571	140,065	135,973	137,814	139,223	140,627	141,871	141,996	143,328	144,484	144,963	144,281	151,535	124,162	108,174
Ice sales	2,507	2,384	2,274	2,135	2,089	2,017	1,919	1,810	1,722	1,642	1,581	1,516	1,462	1,353	1,506	1,470

Source: "Report on Public Health Administration and Services," Administrative Report Statistics Office to the Councilor to the Director-General for Statistics, Information System Management and Industrial Relations, MHLW

(Note) 1) The figures for FY 2010 do not include any municipalities other than Sendai City in Miyagi Prefecture and municipalities within the jurisdiction of Soma Public Health and Welfare Office in Fukushima Prefecture due to the effect of the Great East Japan Earthquake.

2) Due to the revision of the Hotel Business Act (enforced on June 15, 2018), the business types of "Hotels" and "Inns" have been integrated into "Hotels and Inns", therefore numbers in the "Hotels and Inns" before 2017 are the total numbers of "Hotels" and "Inns".

3) "Non-store agents" means the number of operators.

4) Due to revisions to the Food Sanitation Act (enacted on June 1, 2021), there was a review of the types of businesses that require a license, and "coffee shops" was integrated as a form of "restaurants." In addition, "vending machines with cooking function," which was treated as either "restaurants" or "coffee shops," was defined as a separate type of business, and vending machines with advanced functions that are installed indoors were made subject to notification of business. As a transitional measure, it is permitted to continue operating businesses under the old permit classification of "coffee shops." Therefore, "restaurants" in 2021 and later includes businesses that were categorized as "coffee shops" in 2020 and earlier. "Restaurants" in 2020 and earlier is divided into "restaurants," "vending machines with cooking function," and "cup-type vending machines (automatic cleaning and indoor installation). In addition, "coffee shops" in 2021 and later is divided into "restaurants," "coffee shops," "vending machines with cooking function," and "cup-type vending machines (automatic washing and indoor installation)" from "coffee shops" in 2020 and earlier.

5) Due to revisions to the Food Sanitation Act (enacted on June 1, 2021), there was a review of the types of businesses that require a license. The purchase of meat in a container or packaging and sold as-is, which was previously treated as "meat sales," became subject to notification of business. Therefore, "meat sales" in or after FY 2021 is partially different from "meat sales" in or before FY 2020.