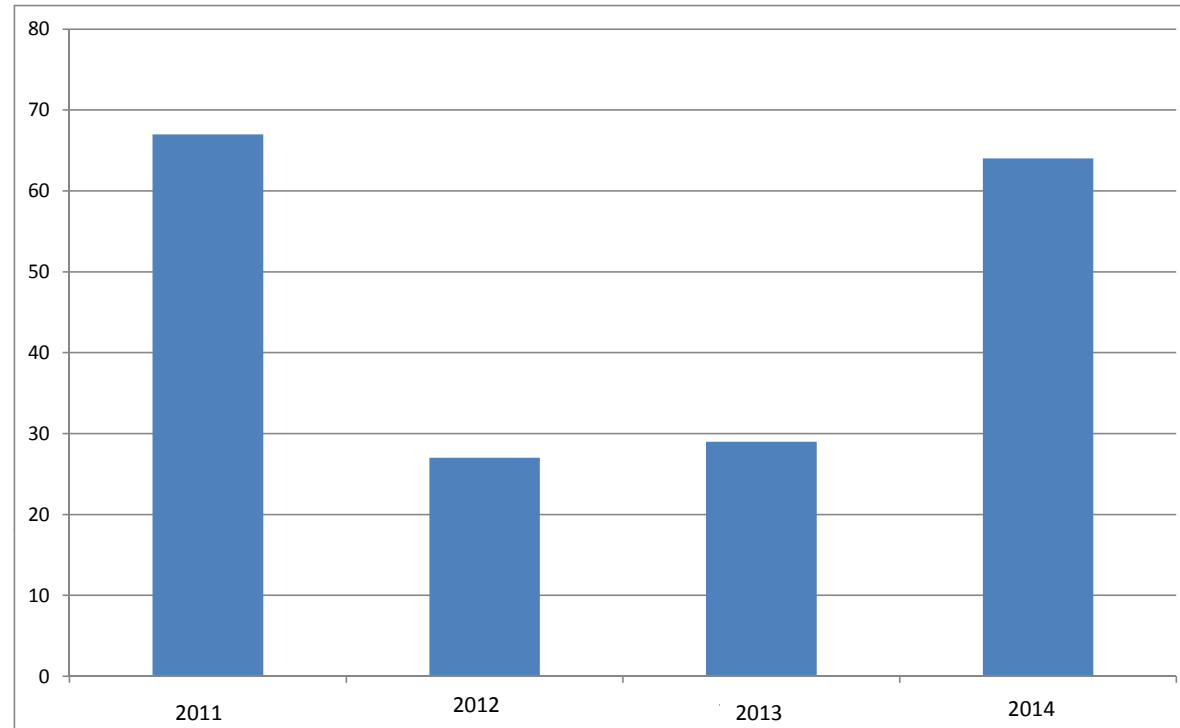


Occupational Accidents in Connection with Decommissioning Work at TEPCO's Fukushima Daiichi NPP by Year (including accidents nearly resulting in injury)

(persons affected)



(reference) Number of accidents by month

(as of January 7, 2015)

	January	February	March	April	May	June	July	August	September	October	November	December	Total
2011			15	2	6	9	15	6	7	4	3	0	67
2012	2	3	2	1	0	3	6	5	1	0	3	1	27
2013	1	3	1	2	1	0	4	6	5	2	1	3	29
2014	0	5	3	4	6	6	13	7	10	4	5	1	64

(prepared based on data released by TEPCO)