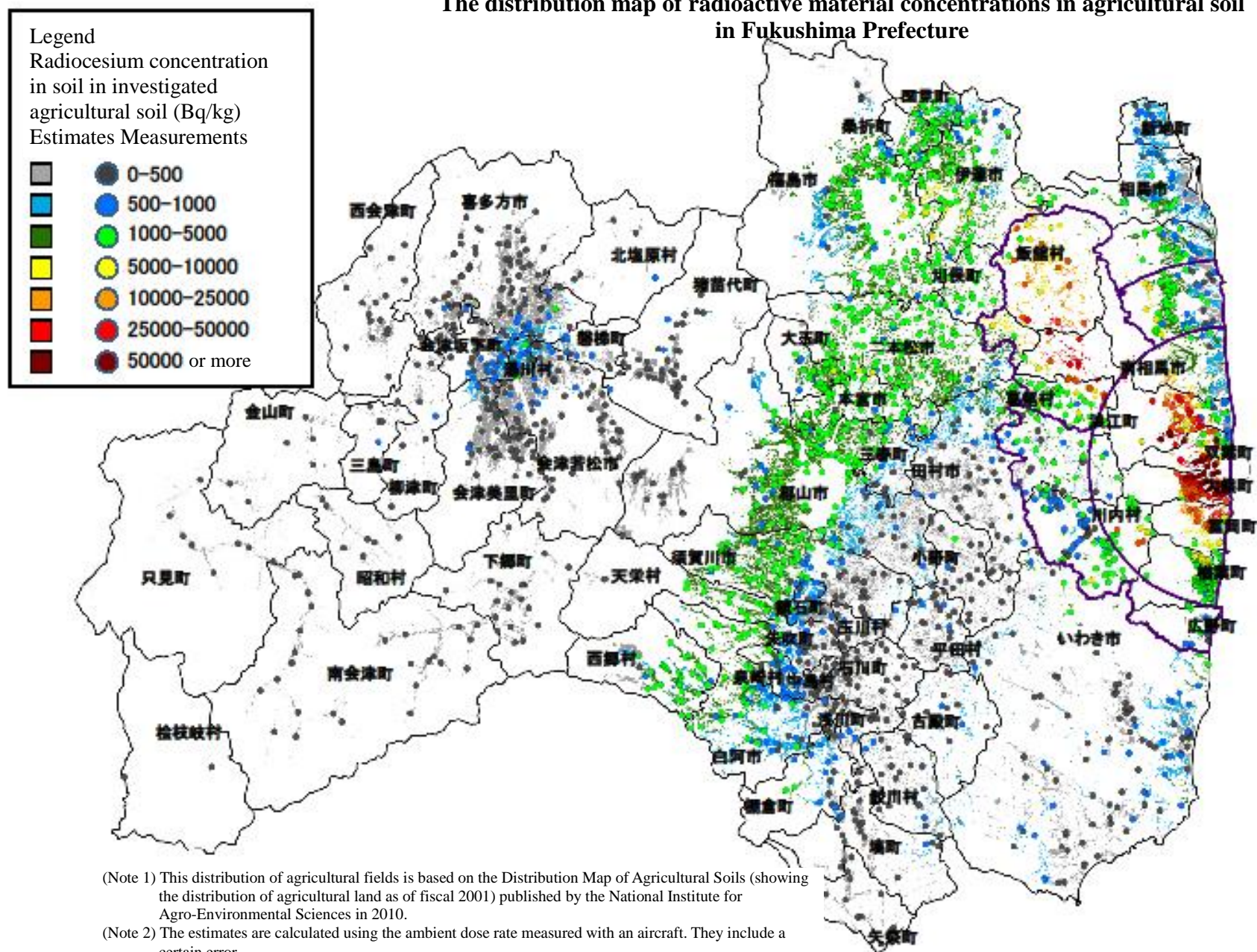
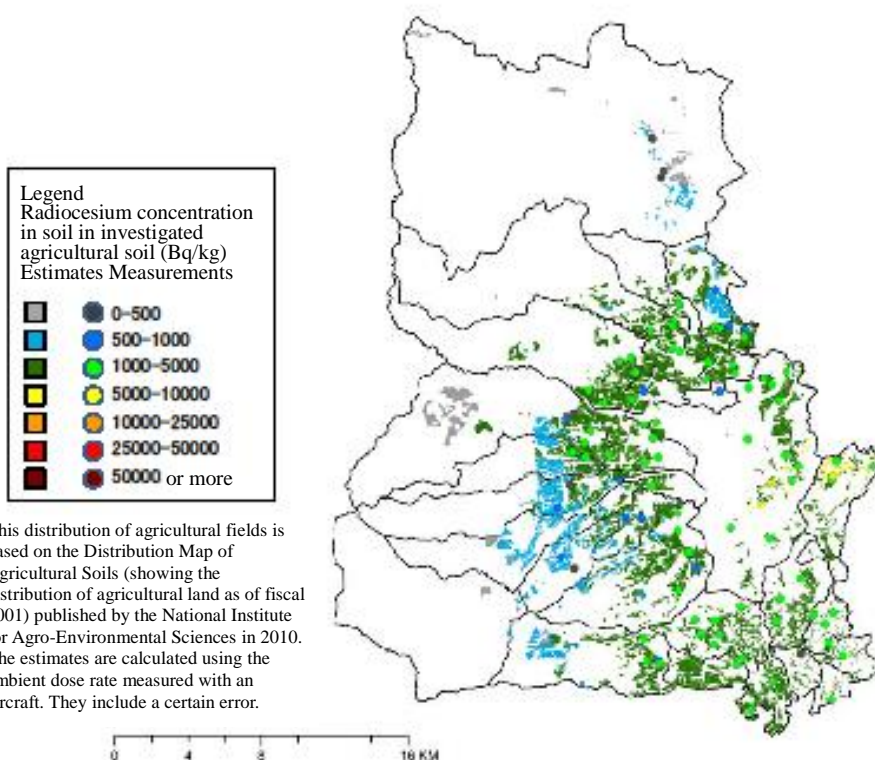


The distribution map of radioactive material concentrations in agricultural soil in Fukushima Prefecture



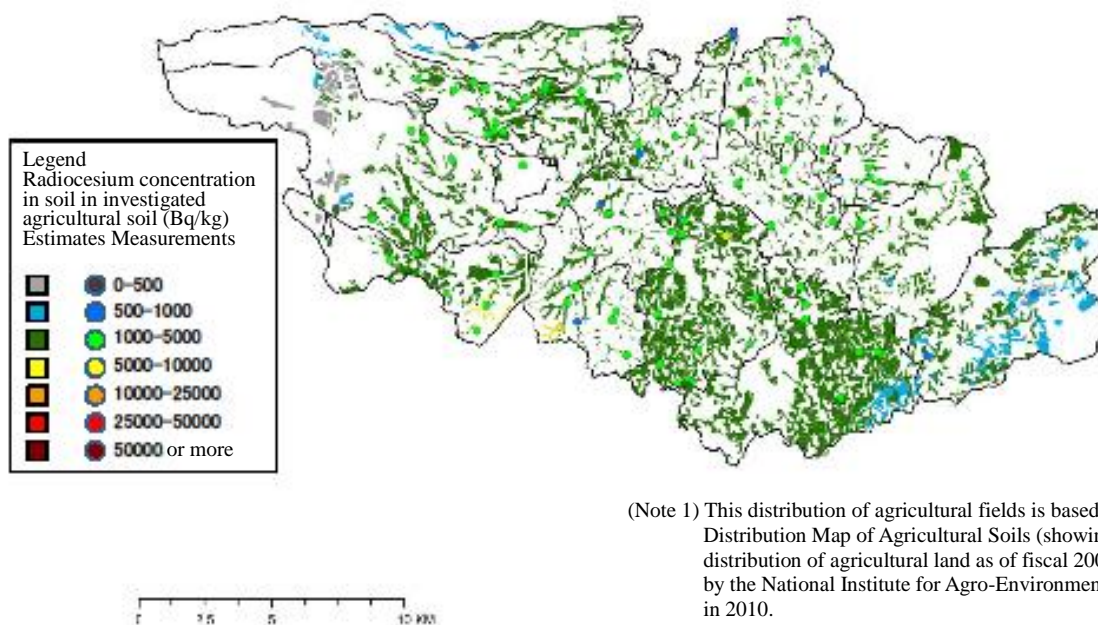
The distribution map of radioactive material concentrations in agricultural soil in Fukushima City



(Note 1) This distribution of agricultural fields is based on the Distribution Map of Agricultural Soils (showing the distribution of agricultural land as of fiscal 2001) published by the National Institute for Agro-Environmental Sciences in 2010.

(Note 2) The estimates are calculated using the ambient dose rate measured with an aircraft. They include a certain error.

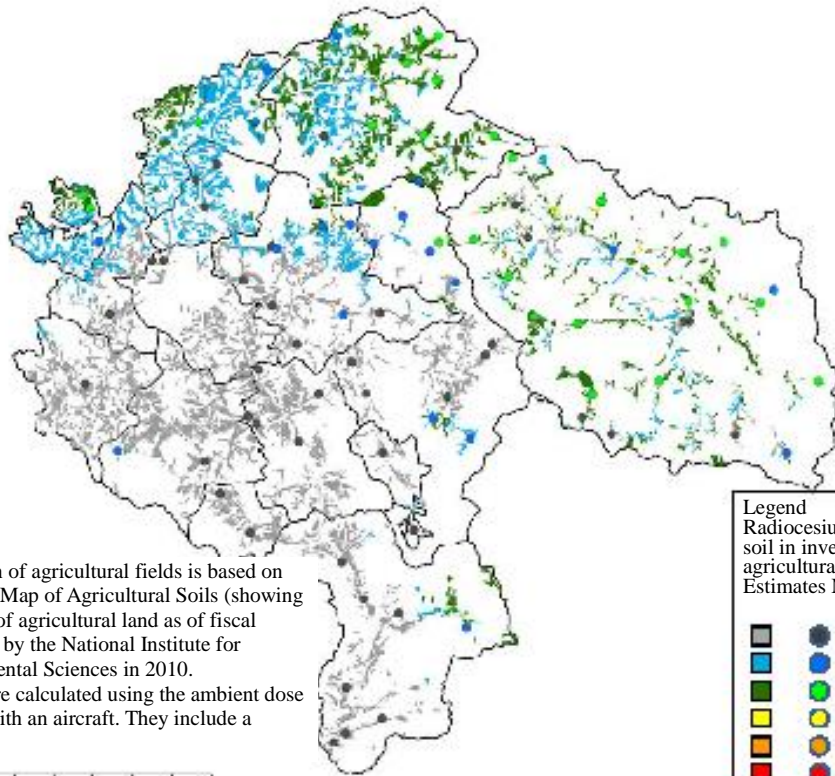
The distribution map of radioactive material concentrations in agricultural soil in Nihonmatsu City



(Note 1) This distribution of agricultural fields is based on the Distribution Map of Agricultural Soils (showing the distribution of agricultural land as of fiscal 2001) published by the National Institute for Agro-Environmental Sciences in 2010.

(Note 2) The estimates are calculated using the ambient dose rate measured with an aircraft. They include a certain error.

The distribution map of radioactive material concentrations in agricultural soil in Tamura City



Legend
Radiocesium concentration in
soil in investigated
agricultural soil (Bq/kg)
Estimates Measurements

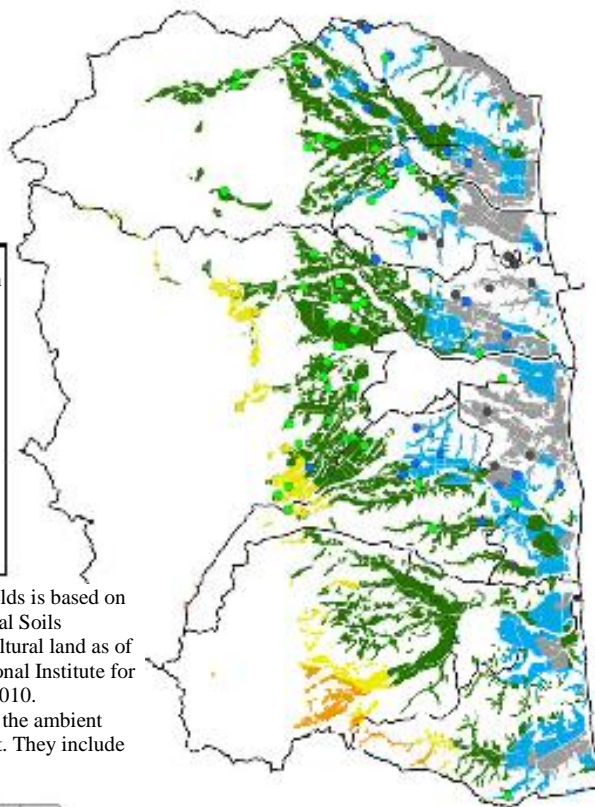


(Note 1) This distribution of agricultural fields is based on the Distribution Map of Agricultural Soils (showing the distribution of agricultural land as of fiscal 2001) published by the National Institute for Agro-Environmental Sciences in 2010.

(Note 2) The estimates are calculated using the ambient dose rate measured with an aircraft. They include a certain error.

0 3 6 12 KM

The distribution map of radioactive material concentrations in agricultural soil in Minamisoma City



Legend
Radiocesium concentration in
soil in investigated
agricultural soil (Bq/kg)
Estimates Measurements

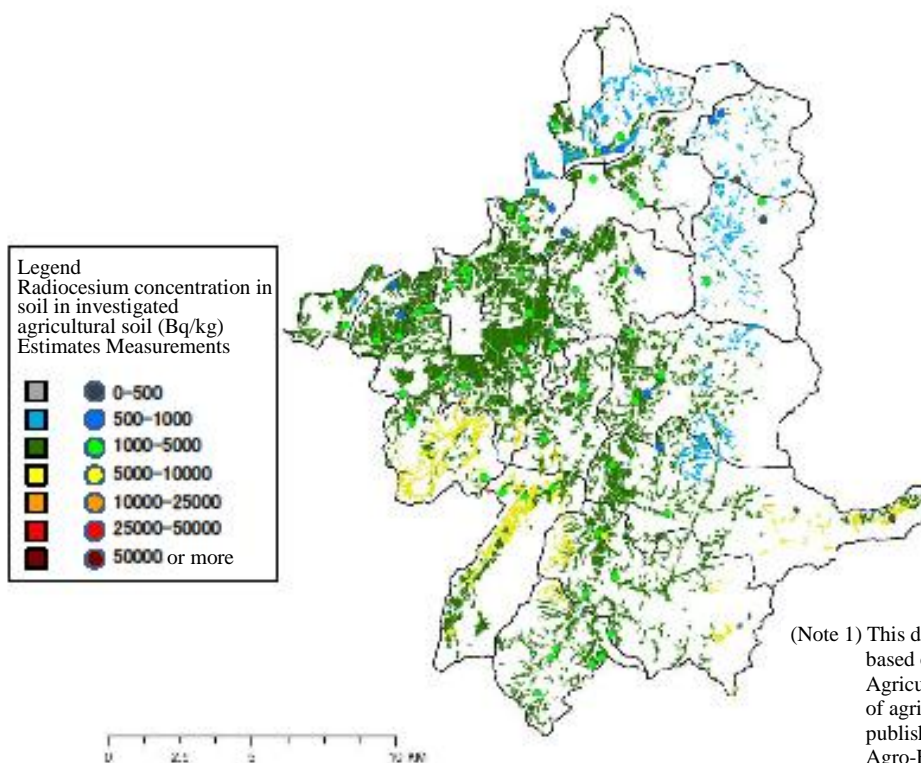


(Note 1) This distribution of agricultural fields is based on the Distribution Map of Agricultural Soils (showing the distribution of agricultural land as of fiscal 2001) published by the National Institute for Agro-Environmental Sciences in 2010.

(Note 2) The estimates are calculated using the ambient dose rate measured with an aircraft. They include a certain error.

0 2.5 5 10 KM

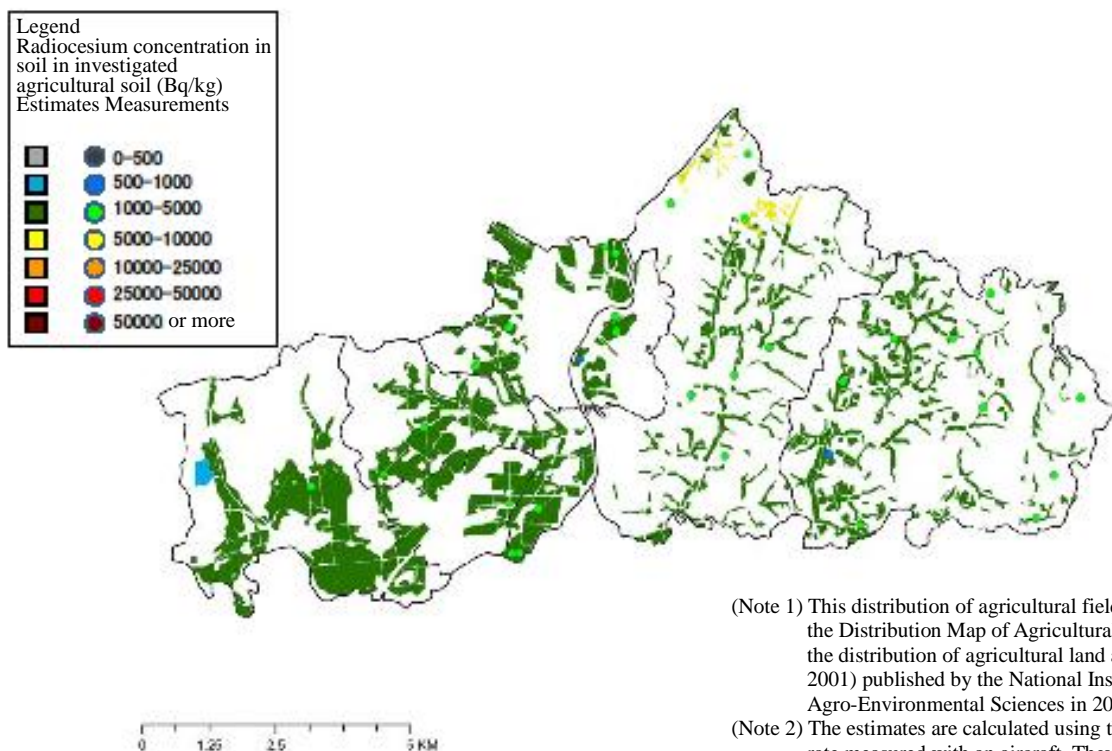
The distribution map of radioactive material concentrations in agricultural soil in Date City



(Note 1) This distribution of agricultural fields is based on the Distribution Map of Agricultural Soils (showing the distribution of agricultural land as of fiscal 2001) published by the National Institute for Agro-Environmental Sciences in 2010.

(Note 2) The estimates are calculated using the ambient dose rate measured with an aircraft. They include a certain error.

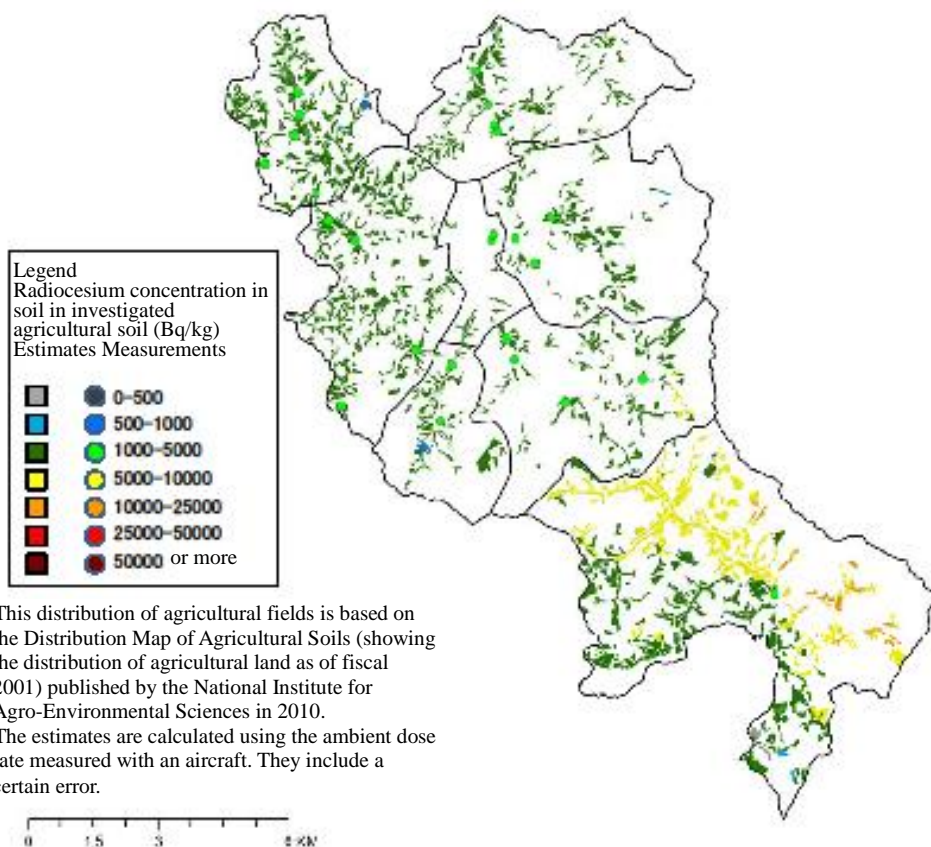
The distribution map of radioactive material concentrations in agricultural soil in Motomiya City



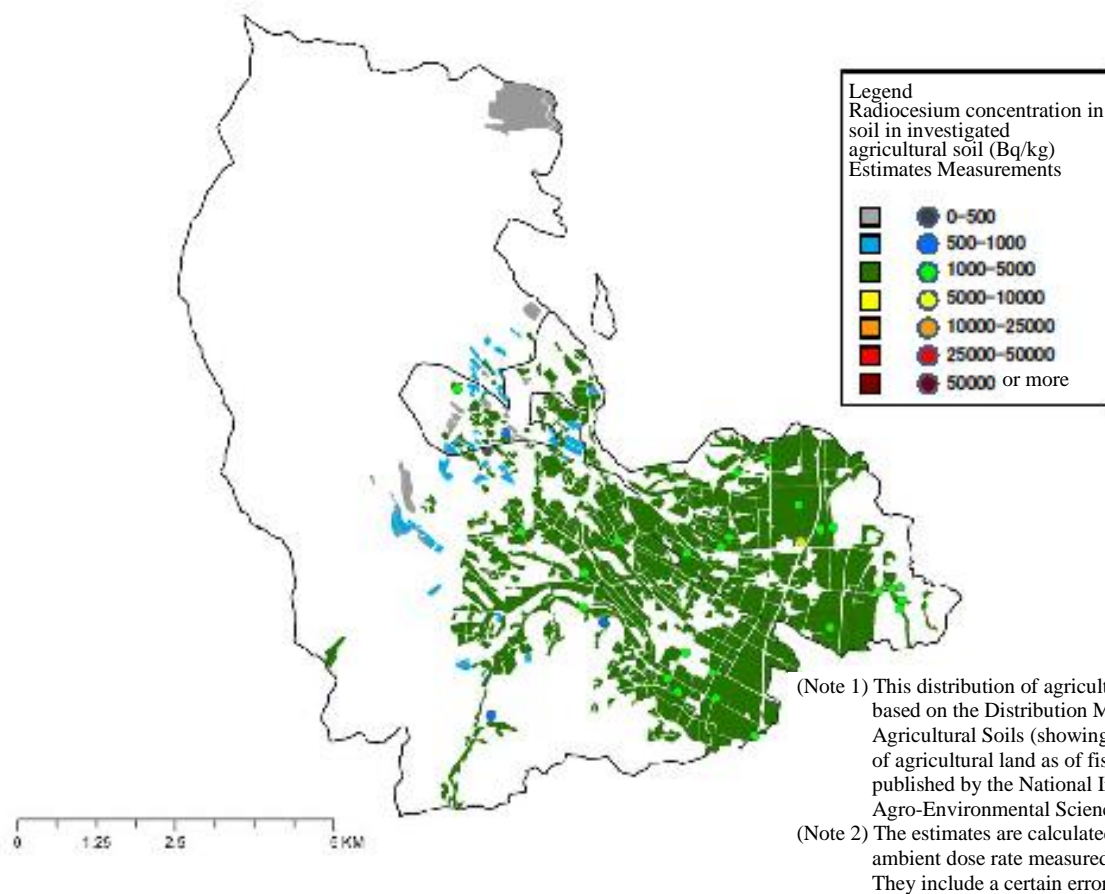
(Note 1) This distribution of agricultural fields is based on the Distribution Map of Agricultural Soils (showing the distribution of agricultural land as of fiscal 2001) published by the National Institute for Agro-Environmental Sciences in 2010.

(Note 2) The estimates are calculated using the ambient dose rate measured with an aircraft. They include a certain error.

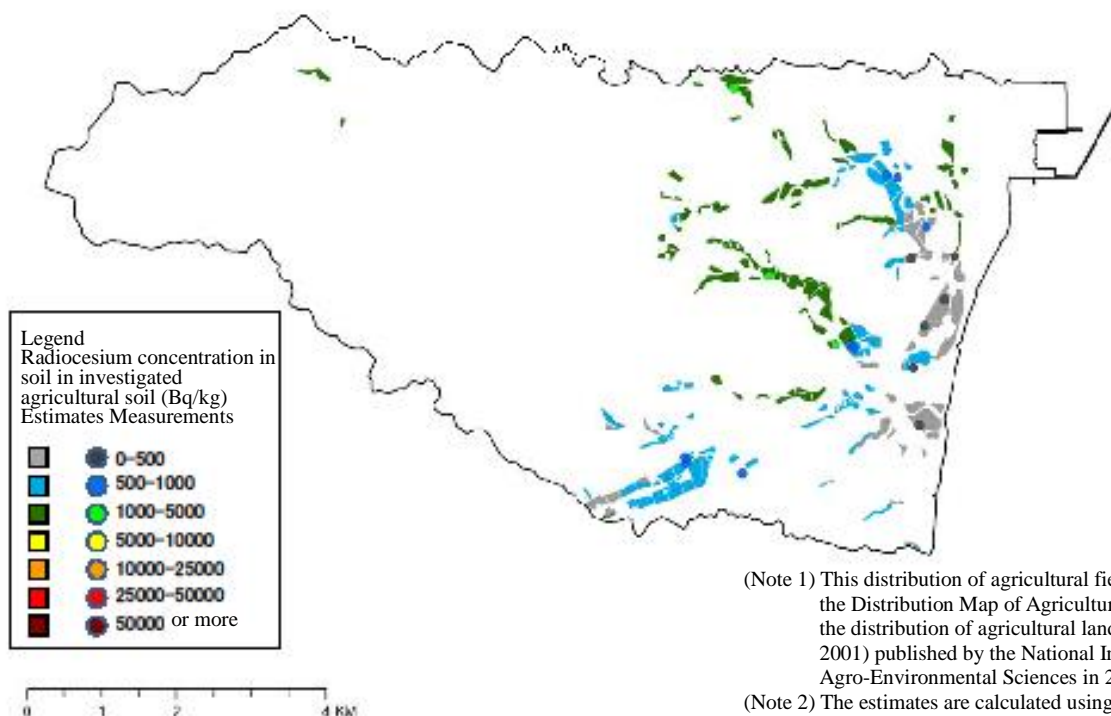
The distribution map of radioactive material concentrations in agricultural soil in Kawamata Town



The distribution map of radioactive material concentrations in agricultural soil in Otama Village



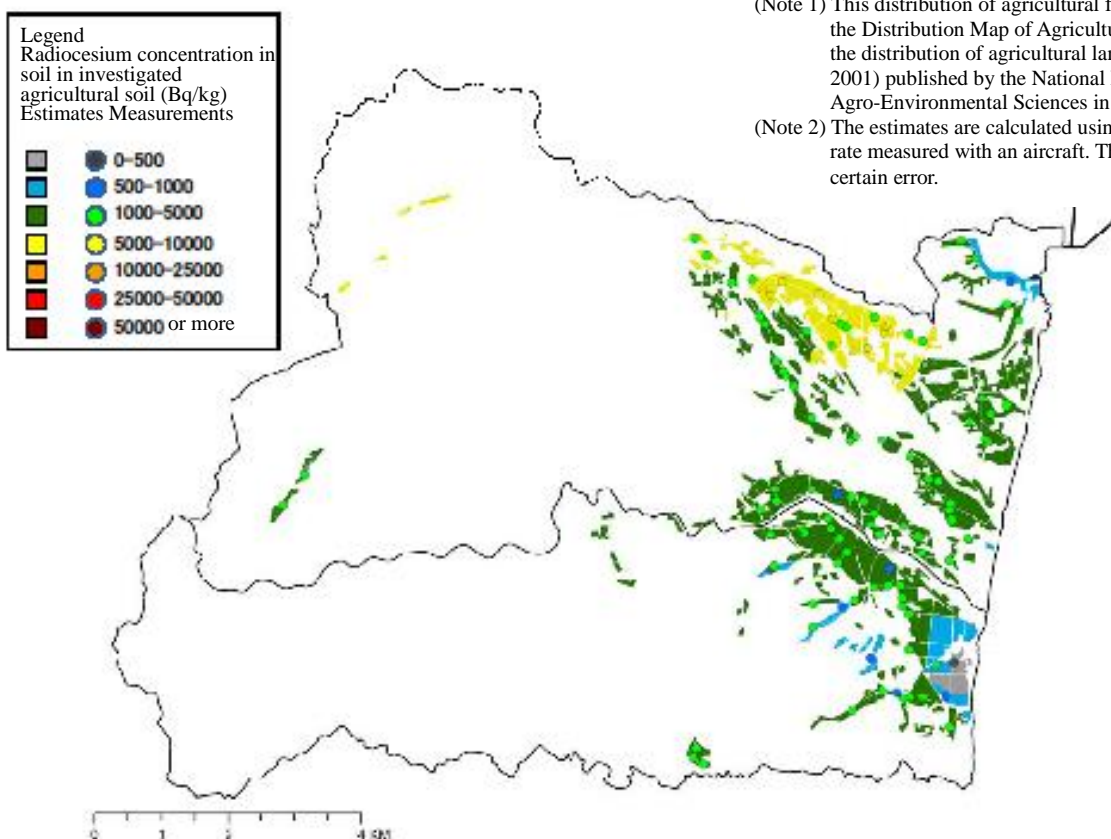
The distribution map of radioactive material concentrations in agricultural soil in Hirono Town



(Note 1) This distribution of agricultural fields is based on the Distribution Map of Agricultural Soils (showing the distribution of agricultural land as of fiscal 2001) published by the National Institute for Agro-Environmental Sciences in 2010.

(Note 2) The estimates are calculated using the ambient dose rate measured with an aircraft. They include a certain error.

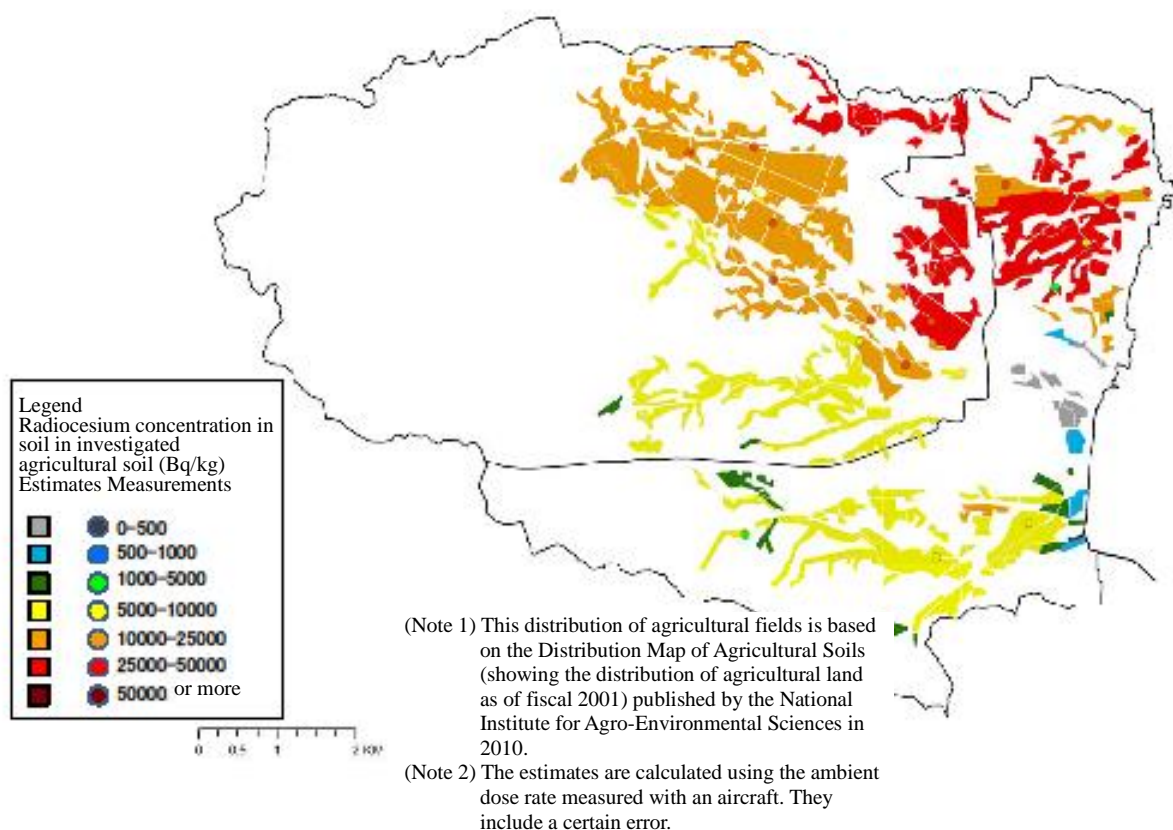
The distribution map of radioactive material concentrations in agricultural soil in Naraha Town



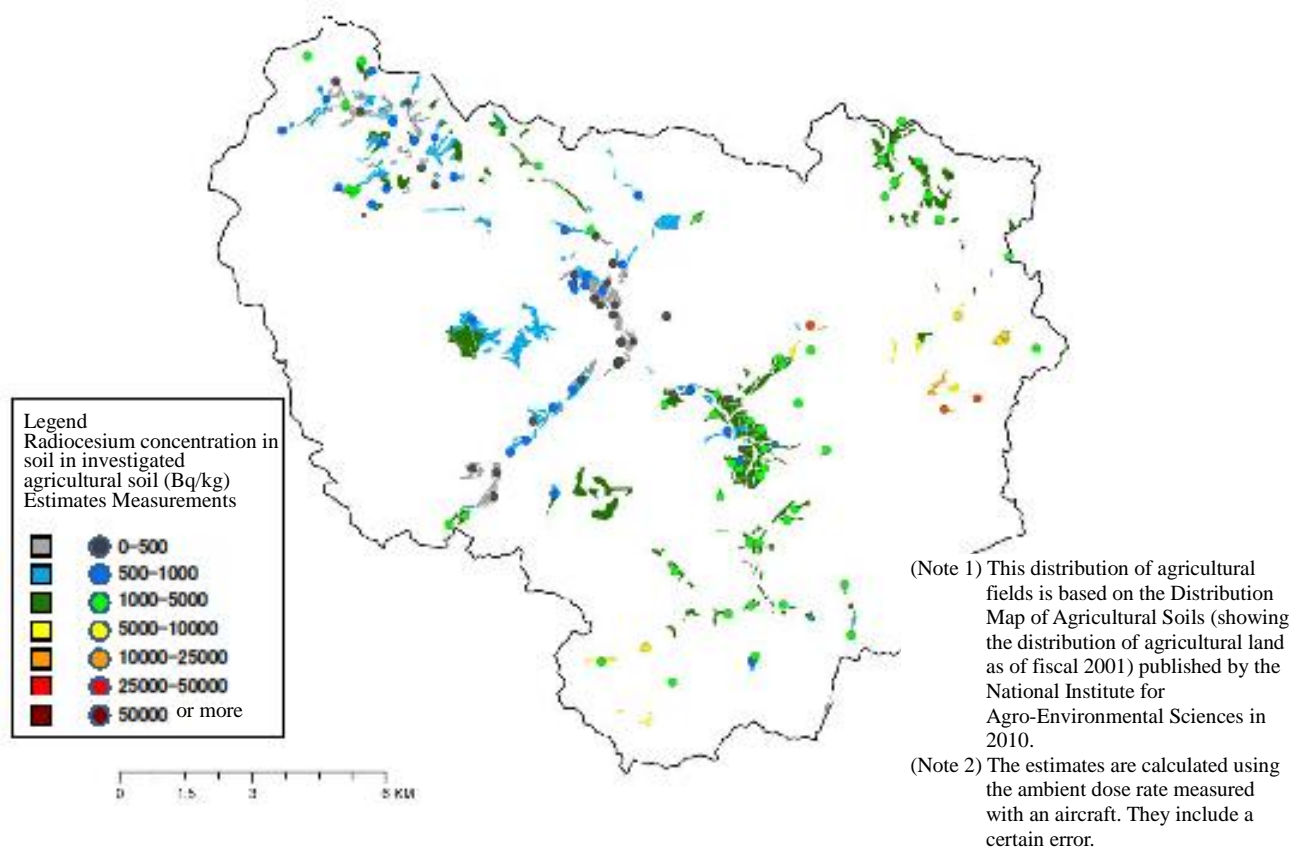
(Note 1) This distribution of agricultural fields is based on the Distribution Map of Agricultural Soils (showing the distribution of agricultural land as of fiscal 2001) published by the National Institute for Agro-Environmental Sciences in 2010.

(Note 2) The estimates are calculated using the ambient dose rate measured with an aircraft. They include a certain error.

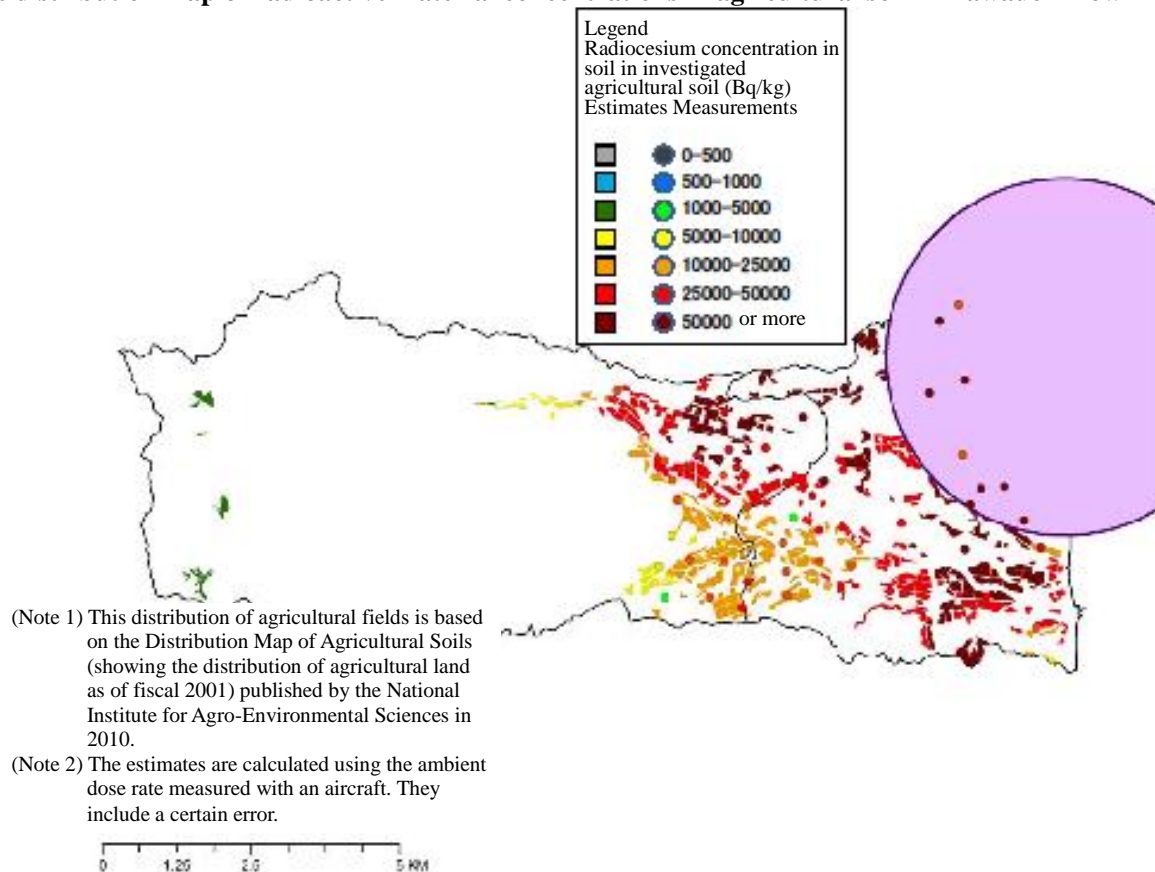
The distribution map of radioactive material concentrations in agricultural soil in Tomioka Town



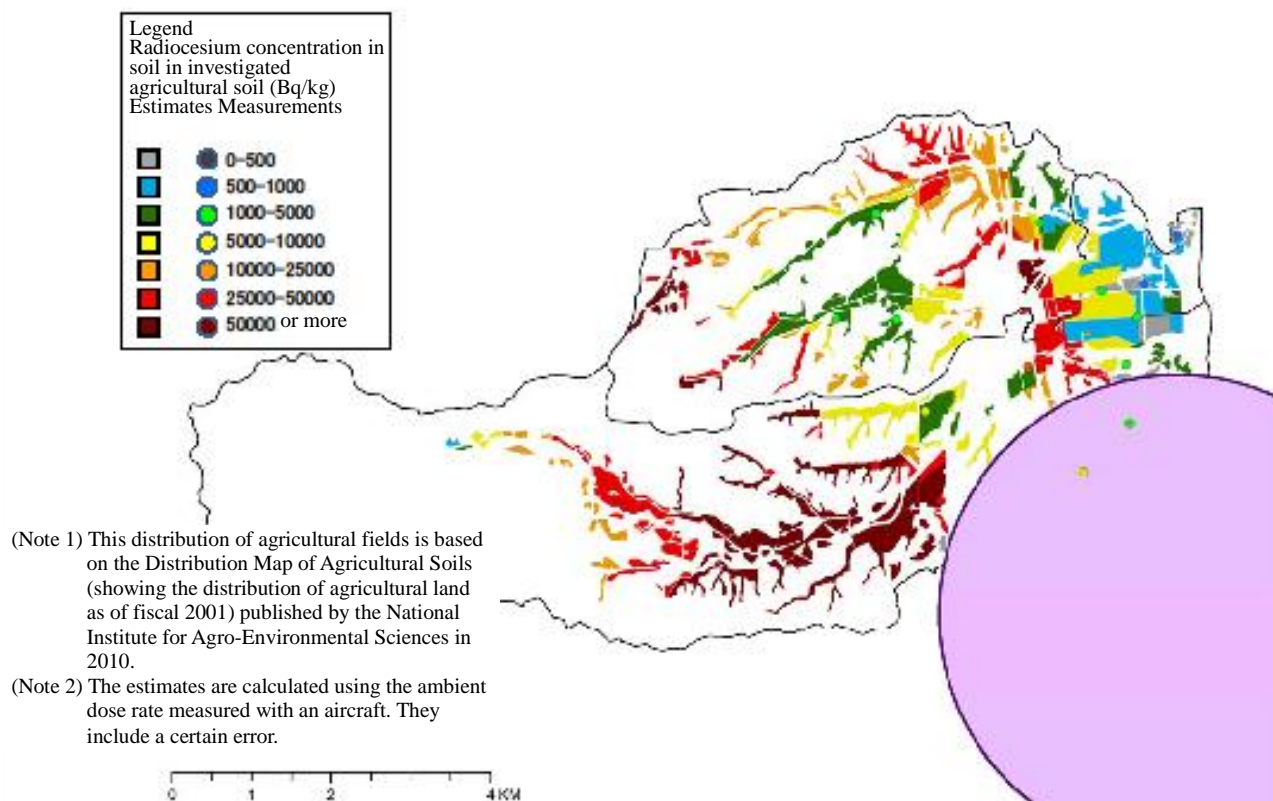
The distribution map of radioactive material concentrations in agricultural soil in Kawauchi Town



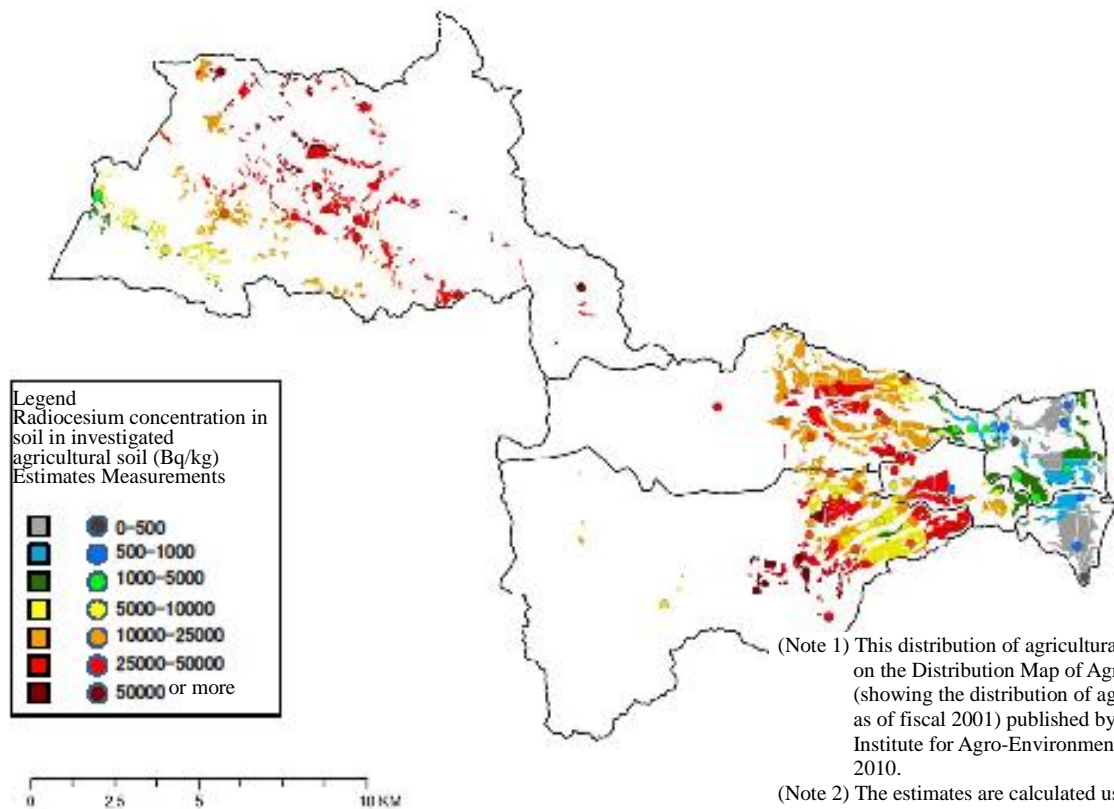
The distribution map of radioactive material concentrations in agricultural soil in Kawauchi Town



The distribution map of radioactive material concentrations in agricultural soil in Futaba Town



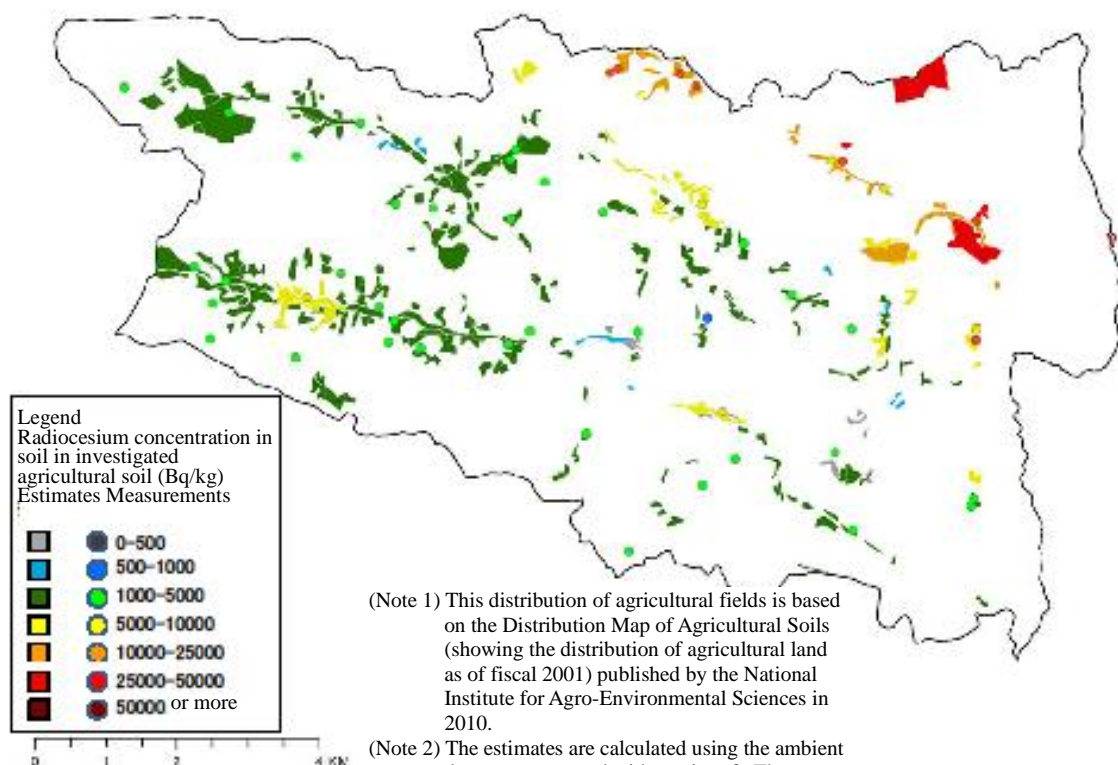
The distribution map of radioactive material concentrations in agricultural soil in Namie Town



(Note 1) This distribution of agricultural fields is based on the Distribution Map of Agricultural Soils (showing the distribution of agricultural land as of fiscal 2001) published by the National Institute for Agro-Environmental Sciences in 2010.

(Note 2) The estimates are calculated using the ambient dose rate measured with an aircraft. They include a certain error.

The distribution map of radioactive material concentrations in agricultural soil in Kuzuo Village



(Note 1) This distribution of agricultural fields is based on the Distribution Map of Agricultural Soils (showing the distribution of agricultural land as of fiscal 2001) published by the National Institute for Agro-Environmental Sciences in 2010.

(Note 2) The estimates are calculated using the ambient dose rate measured with an aircraft. They include a certain error.

The distribution map of radioactive material concentrations in agricultural soil in Iitate-Village

