



Indonesia Experience in Improving Society Health and Welfare

Dr. Bambang Widiyanto
Senior advisor to the Minister of Health

ASEAN-High Level Official Meeting
November 28th , 2023



INDONESIAN DEMOGRAPHICS

TOTAL POPULATION
275.773.774

Elderly > 60 yo



29.660.514

Productive Age
>19-59 yo



157.752.865

WORK FORCE
147.71 million

Adolescent
10-19 yo



44.252.201

EMPLOYMENT
139,85 million

Preschool and
School Age 5- 9 yo



22.013768

OPEN UNEMPLOYMENT
5%

Under-5 yo



22.094.426

- 11% OF THE POPULATION ARE ELDERLY ABOVE 60
- 39% OF ELDERLY LIVE WITH DISABILITY
- 12% ELDERLY WITH LIVE IN POVERTY

Source: Statistic Center Board 2022



KEMENTERIAN
KETENAGAKERJAAN
REPUBLIK INDONESIA



KEMENTERIAN
KESEHATAN
REPUBLIK INDONESIA



KEMENTERIAN SOSIAL
REPUBLIK INDONESIA

INDONESIAN SOCIAL PROTECTION HIGHLIGHTS

SOCIAL ASSISTANCE/NON-CONTRIBUTORY

1. HEALTH SOCIAL INSURANCE FOR THE POOR
2. CASH TRANSFER FOR STUDENT FROM POOR AND VULNERABLE FAMILY
3. FAMILY HOPE PROGRAM
4. FOOD ASSISTANCE PROGRAM
5. ALLOWANCE ASSISTANCE FOR THE ELDERLY

SOCIAL INSURANCE/CONTRIBUTORY

1. NATIONAL INSURANCE HEALTH
2. SOCIAL INSURANCE FOR EMPLOYMENT
 - HEALTH INSURANCE
 - WORK INJURY COMPENSATION
 - SURVIVOR'S BENEFIT
 - OLD AGE SAVING WITH DISABILITY BENEFIT
 - ELDERLY PENSION



KEMENTERIAN
KETENAGAKERJAAN
REPUBLIK INDONESIA



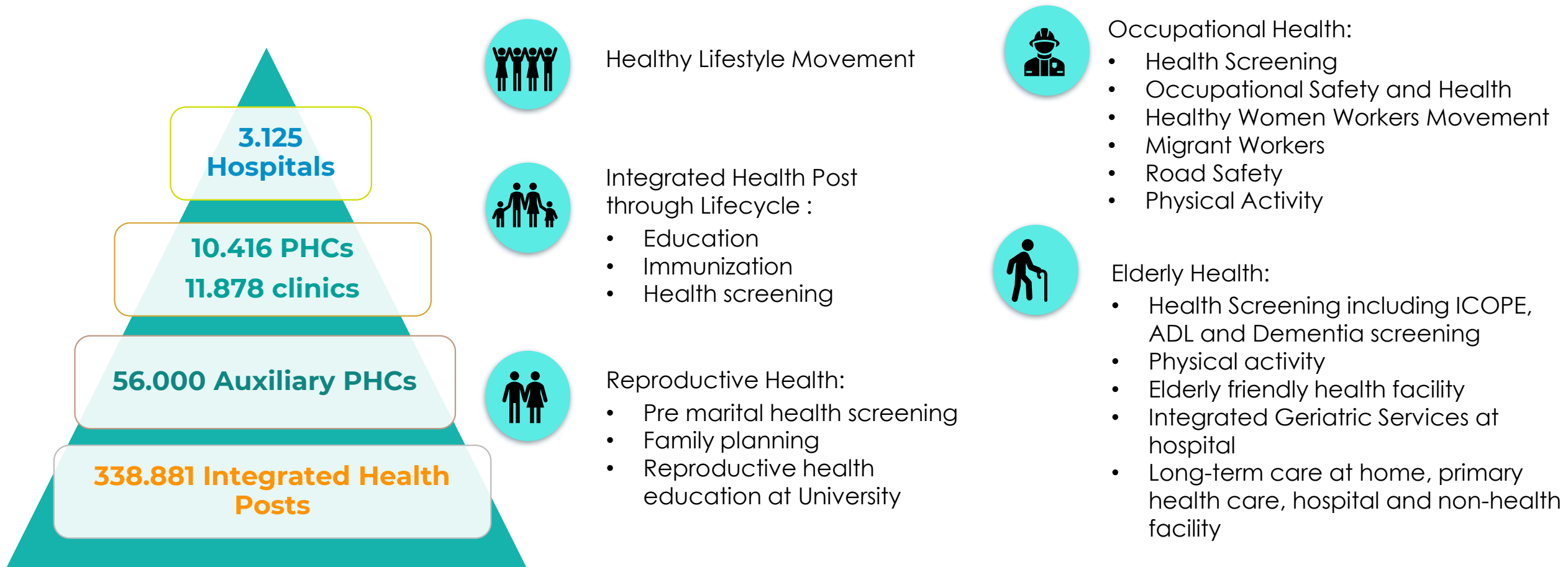
KEMENTERIAN
KESEHATAN
REPUBLIK INDONESIA



KEMENTERIAN SOSIAL
REPUBLIK INDONESIA

Mandate Health Law Number 17 of 2023 and Presidential Regulation Number 88 of 2021 Concerning the National Strategy for Aging

The Ministry of Health Program are:



Through Community based Health Program and Health Services



KEMENTERIAN
KETENAGAKERJAAN
REPUBLIK INDONESIA



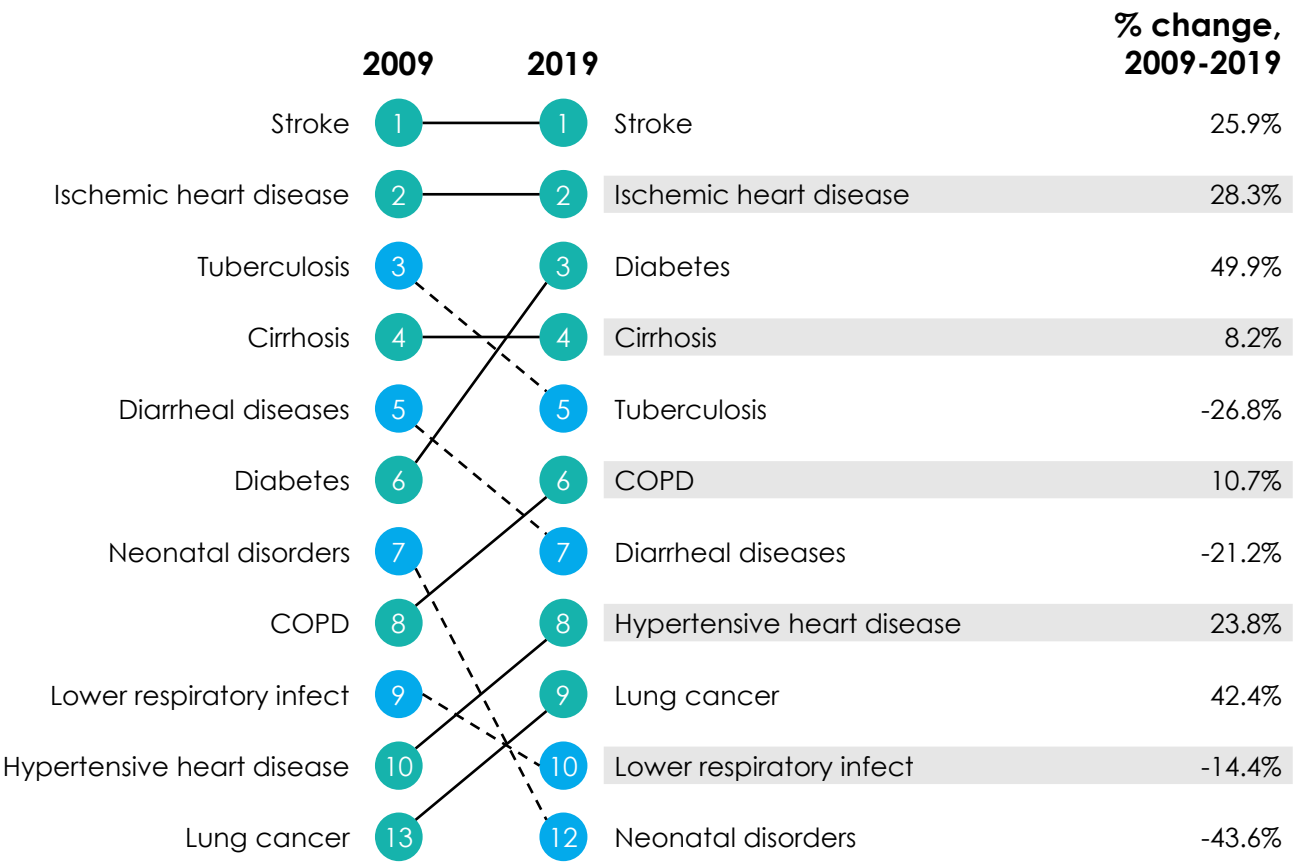
KEMENTERIAN
KESEHATAN
REPUBLIK INDONESIA



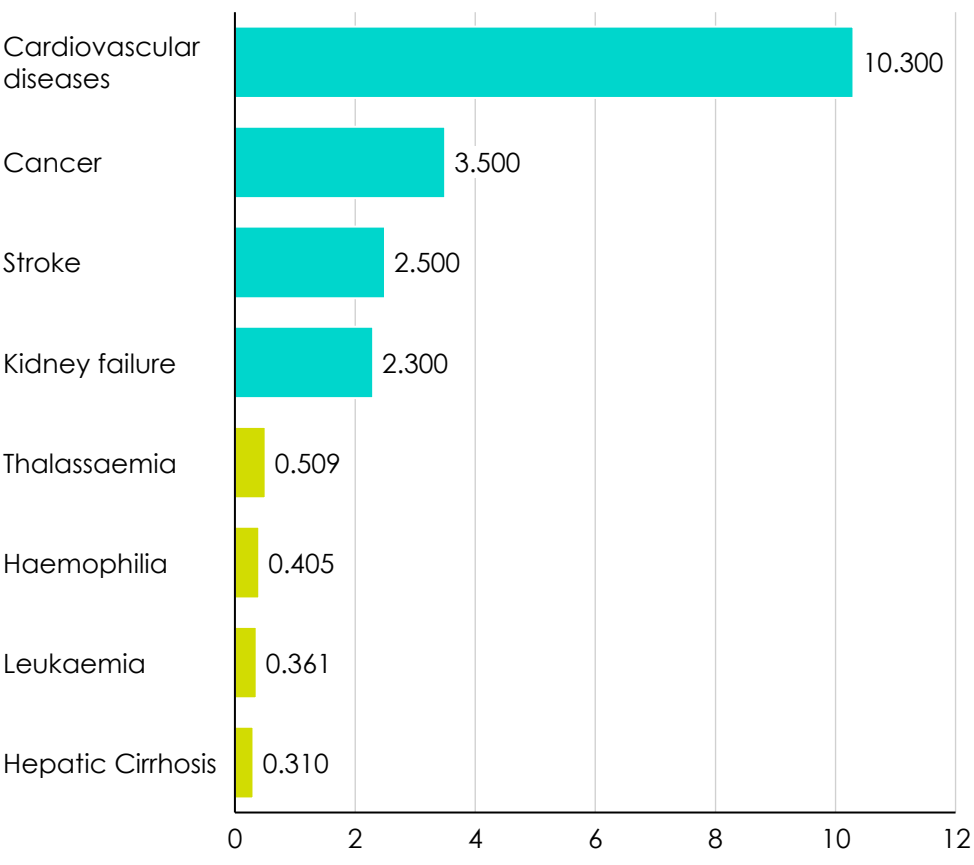
KEMENTERIAN SOSIAL
REPUBLIK INDONESIA

Chronic diseases that are preventable are a leading cause of death and fiscal burden

changes in the **pattern of diseases** that cause the highest number of deaths



diseases cause the **largest financing burden**



Sumber: Institute for Health Metrics and Evaluation (IHME), BPJS Kesehatan (2020)

3 Main Programs to Strengthen Preventive Intervention in Primary Services



Routine immunization: from 11 to **14 types of vaccines**

BCG, DPT-Hib, Hep B, MMR/MR, Polio (OPV-IPV), TT/DT/td, JE, **HPV, PCV, Rotavirus**

Cervical Cancer is a cancer that can be prevented by Human **Papillomavirus (HPV) immunization.**

Pneumonia and diarrhea are 2 of the 5 highest causes of under-five deaths in Indonesia* which **can be prevented by immunization (PCV and Rotavirus)**



14 Screening Priority Diseases

Screening penyakit penyebab kematian tertinggi di setiap sasaran usia:

1. Hipotiroid kongenital
2. Thalasemia
3. Anemia
4. Stroke
5. Heart attack
6. Hypertention
7. Chronic Lung Obstruction
8. Tuberculosis
9. Lung Cancer
10. Hepatitis
11. Diabetes
12. Breast cancer
13. Cervical cancer
14. Colorectal cancer



Improving **maternal health** and **child**

Monitoring **children's growth and development at Posyandu** using **standardized anthropometric tools**

Antenatal Care(ANC) from **4 times to 6 times, include 2 ultrasounds** with a doctor in the **1st and 3rd trimesters**

Breast cancer screening with ultrasound

Screening for Congenital Heart Disease at Community Health Centers with **Neonatal Pulse Oximetry**



KEMENTERIAN
KESEHATAN
REPUBLIK
INDONESIA



KEMENTERIAN SOSIAL
REPUBLIK INDONESIA



KEMENTERIAN
KETENAGAKERJAAN
REPUBLIK INDONESIA

Thank You