



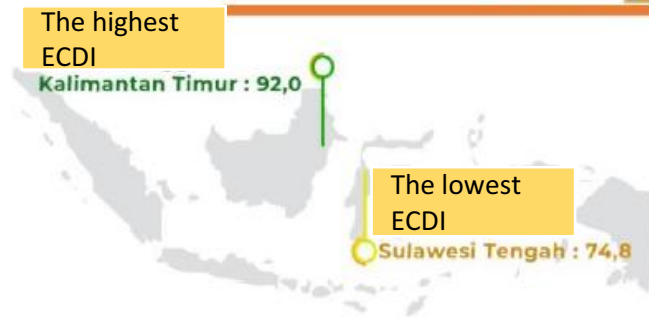
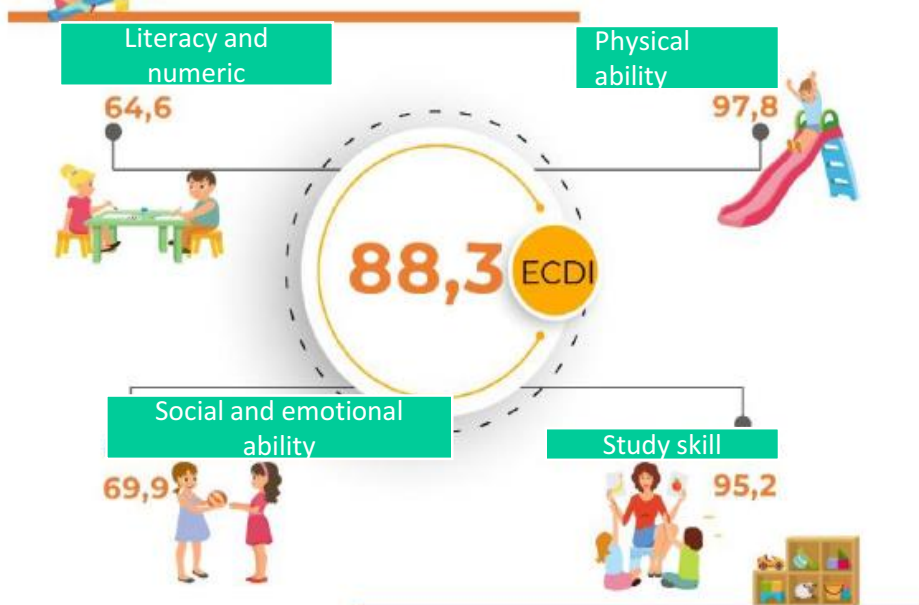
# Support for Families of Children with Developmental Disorders Policies & Good Practice from Indonesia: Disability-Caring-Villages *'Kampung Peduli Disabilitas'*

Ministry of Health, Ministry of Social Affairs, Ministry of Labor  
Republic of Indonesia

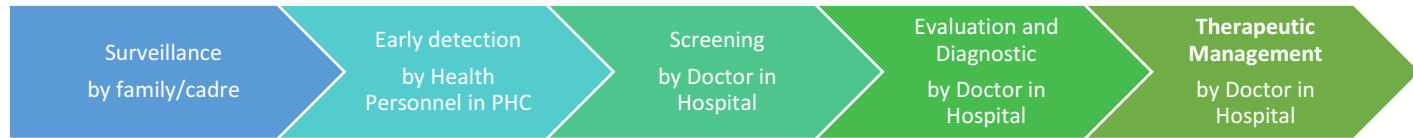
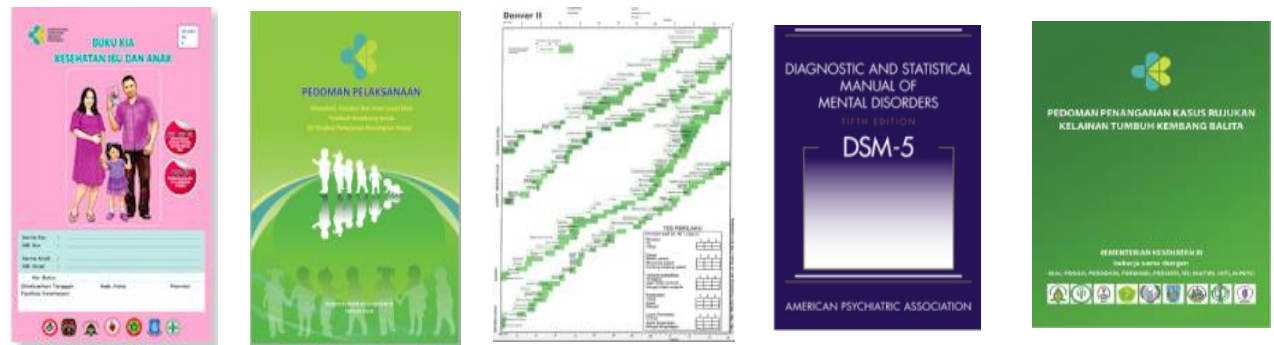
# POLICIES AND PROGRAMS TO SUPPORT PEOPLE WITH DISABILITIES

- Law Number 19 Year 2011 on Ratification of Convention on the Rights of PWDs
- Law Number 8 Year 2016 on PWDs:
  - Access to healthcare
  - Inclusive education
  - Rights to social-welfare
  - Access to public facilities
  - Equal treatment
  - Employment and Entrepreneurship Rights
  - The Government, Local Governments, State-Owned Enterprises, and Region-Owned Enterprises are required to employ PWDs at least 2% of the total number of the employees
- Centre and local government initiatives in providing vocational training, job portal, accessible transportation, privileges, NGOs support, community involvement, etc

# Early Childhood Development Index (ECDI) 2018



# Health Services of U5 Children Growth and Development



Tools for child stimulation and growth-development monitoring

Early detection for child growth-development deviation, emotional and behaviour disorders

Speech and language disorders, motoric and behaviour disorders, vision impairment, hearing disorders, Attention Deficit Hyperactivity Disorder

**Number of U5 Children**  
**23.475.758**  
(2020)

**Number of PHC Implement The Child Growth and Development Program**  
**6.586 out of 10.134**  
(2019)

**Number of PHC Implement The Child Growth and Development Program**  
**5.214 out of 10.134**  
(until Sept 2020)



# ACCESS TO HEALTHCARE FOR CHILDREN WITH DEVELOPMENTAL DISORDERS

## PROMOTIVE

- Education
- Socialization
- Provision of EIC Materials

## PREVENTIVE

- Stimulation and development monitoring
- Early detection in healthcare facilities

## CURATIVE

- Pharmacotherapy
- Counseling/ Psychotherapy
- Behavioral therapy speech therapy
- Occupational therapy

## REHABILITATIVE

- Social skills training
- Community based care, social support, family support groups
- Education for families and teachers to support rehabilitation efforts

Promotive & Preventive are carried out by health workers, cadres, and educators in the community

Treatment management of developmental disorders involves psychiatrists, psychologists, social workers, and physical therapists at hospitals

## Health services for children with special needs in PHC PUSKESMAS DAMAI-BALIKPAPAN-EAST KALIMANTAN

- Health services for child growth-development deviation
- Optimize child development
- MCH Handbook utilization as tool for surveillance/ early detection in children with special needs

## Outdoor activities

Walk for autism



Supervision in special education school



## Indoor 'early detection'



# 'KAMPUNG PEDULI DISABILITAS'

*Initiative to support family of Children with Intellectual disability by Raising Awareness towards Inclusive Community*

## BUSINESS DEVELOPMENT

- Creation of New Various Featured Products
- Marketing Strategy
- Involve Community Leaders and Local Stakeholders
- Establish Network with Local Industry & Academician

## GOOD PRACTICES



### Government

- Promoting and Facilitating Inclusive Economic Development Policy and Program
- MoSA through its Center initiating Kampung Peduli to reach the unreached PWDs with a community based approach



### Family

Acceptance Family member with disability. Motivate them to take participation as value member.



### Community Self Help Group

- Approach to Community Leaders and local governments
- Cultural and Local Potential Approach
- Multi-stakeholder Network and Partnership



### Village Community

- Community Perception Changing on Persons with Intellectual Disabilities,
- Community Inclusion Movement,
- Economic Improvement in Community

## LESSON LEARN & CHALLENGES

### **Lesson Learned**

- Values Promoted in the Self Help Grup
- Branding High-Quality Product produced by PWDs
- The Creativity Improvement of the Group
- Eliminating Stigma on PWDs

### **Challenges**

- Maintain the consistency and job quality of the members
- Rotation
- Replacement on government Institution
- Recruiting Facilitators

*Thank  
you*

