



Country Presentation by **Thailand**

# **Collaboration in Health/Welfare Services for Children/Youths Needing Support, and Capacity Development for Human Resources in Local Community**

The 16th ASEAN & Japan High Level Officials Meeting  
on Caring Societies Programme  
**December 5<sup>th</sup> ,2018**

# Children and Youth in Thailand

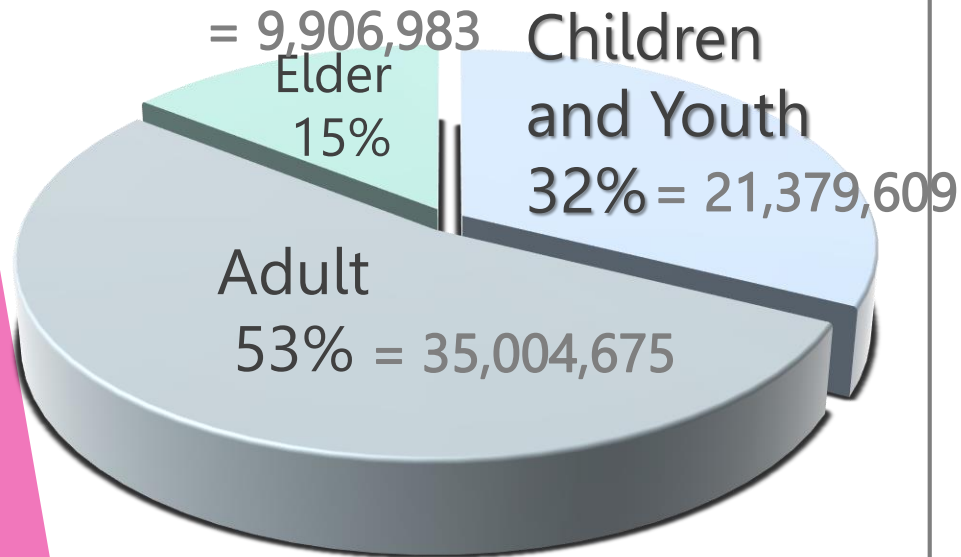
**“Child” = a person who ages under 18-years old;**  
**“Youth” = a person who ages between 18-25 years old.**

National Child and Youth  
 Development Promotion Act  
 (No.2), 2017 - Article 4

Thai Population = 66,046,557



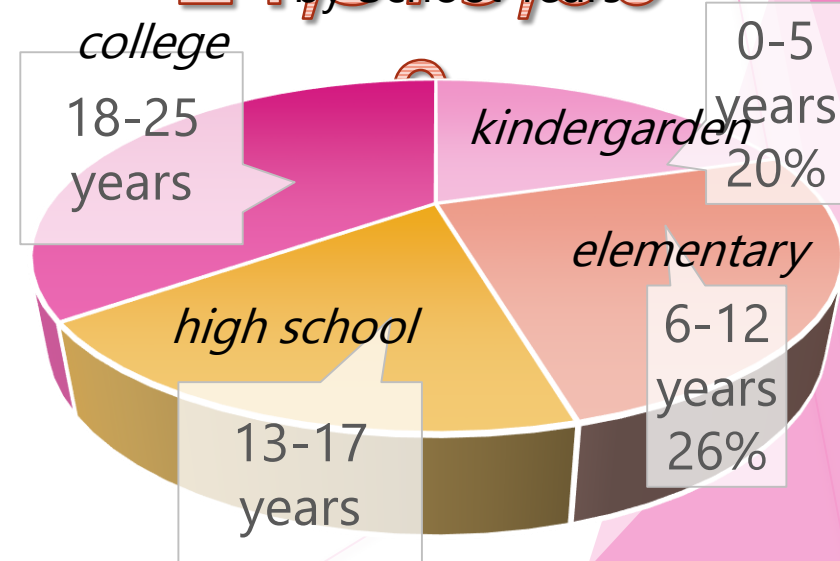
Thai Population by Age Ranges  
*as of 2017*



## Thailand Children and Youth Population

=

**21,379,609**  
 Children and Youth  
 by School Years



# Best Practice of Collaboration in Health/Welfare Services for Children/Youths Needing Support in Thailand



## ► The Child Support Grant Project

❖ Target Group : **Newborn Babies from poor/near-poor families**

### Qualifications :

- ☐ The child must have been born on October 1, 2015 and after.
- ☐ The child must have been born into **a poor/near-poor or a family at risk of becoming impoverished.**
- ☐ Thai citizenship
- ☐ Not currently receiving welfare or other benefits from a government agency or state enterprise.



### Documents required for grant application:

- ☐ A certified document of Household Income Status. (proxy-mean test) LOA, Mol
- ☐ A copy of health records of the mother and the child. by MoPH
- ☐ A copy of birth certificate of the newborn. Mol
- ☐ A copy of bank account book.

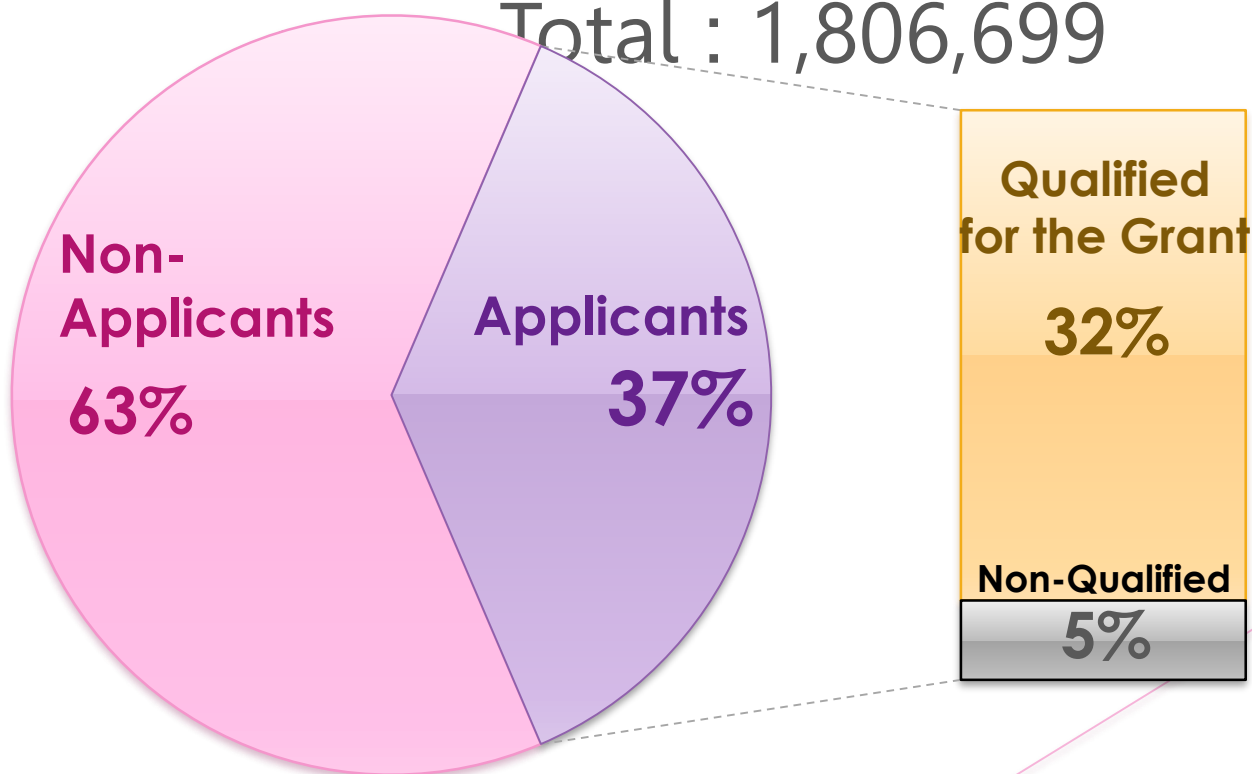


## ► The Child Support Grant Project

- ❖ Ages for children who have the right to receive the grant range from newborn to 3 years old. (36 months)

Number of Children born during Oct  
2015- Sep 2018

Total : 1,806,699



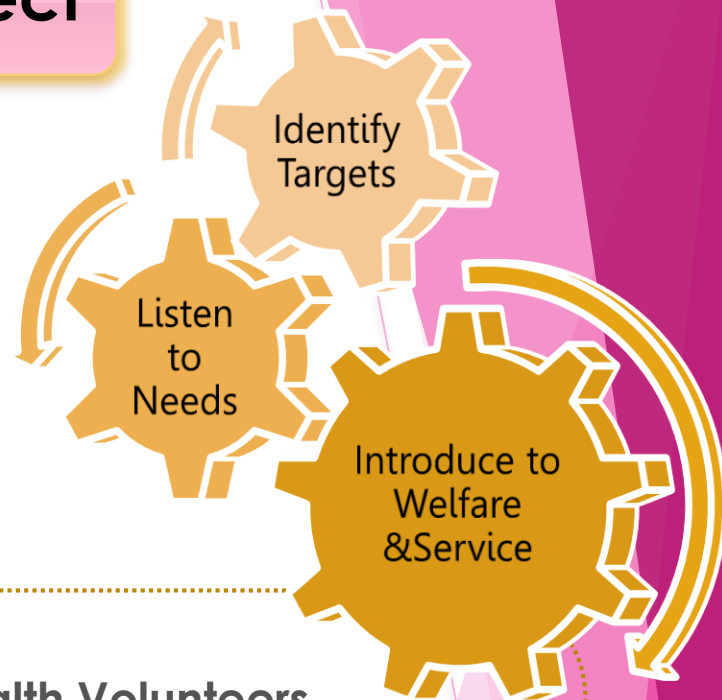
Source: MSDHS, DCY





## ► The Child Support Grant Project

- ❖ Level: National-level Policy as a Social Protection & to Reduce Inequality
- ❖ Stakeholders : MSDHS, Ministry of Public Health(MoPH), Ministry of Interior(Mol), Ministry of Labor(MoL)



### Process

1. **Provincial / Local Administrative Organization (Mol) and Village Health Volunteers**  
: Find the targets

2. **Social worker under MSDHS provincial**  
: Receives targets' information  
: Process application forms and documents

3. **Provincial Public Health / Labor office**  
: Visit target at home  
: Provide medical / social welfare service

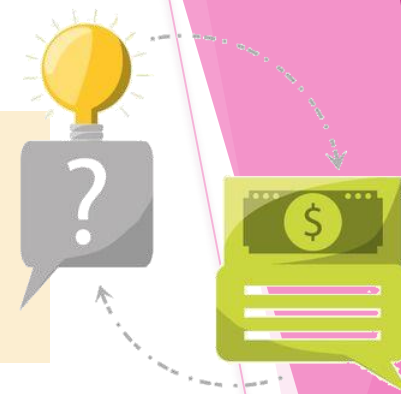
✓ If qualified, the applicant will receive the grant of \$18 via **transfer directly into their bank account.**





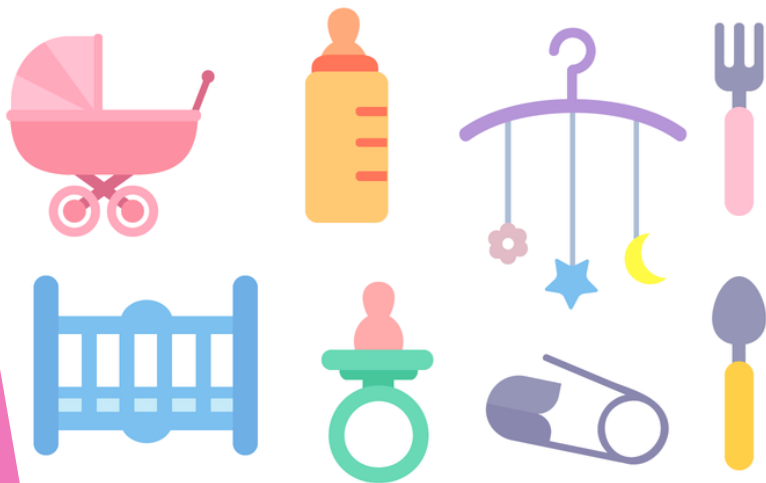
## ► The Child Support Grant Project

❖ The project grant is **\$18/month as a basic benefit allowance** that the mother /parent /guardian of the newborn shall receive.



### ❖ Objectives :

- offsets the cost that support quality care and appropriate development of a newborn
- ensures a child's right for survival and livelihood as stated in the **Convention on the Rights of the Child**







## ► The Child Support Grant Project

### ❖ Further Benefits :

- ❑ an opportunity for parents-to-be / new parents to receive services such as **maternity information**.

UNICEF Evaluation

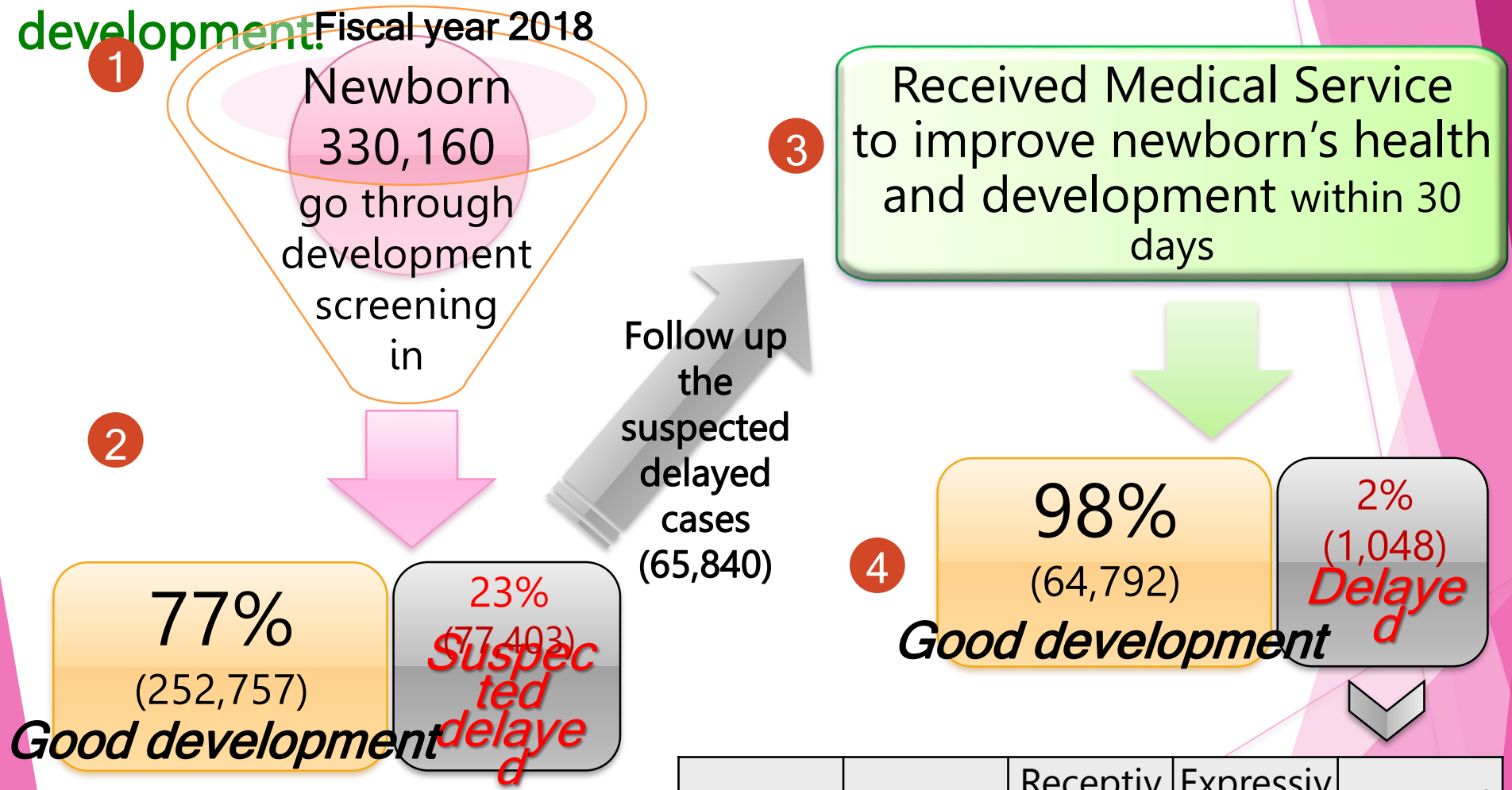
1. Improve of access to social service of the mother and child
2. Good nutrition for the newborns
3. Empowerment of woman (mother) in a family

- ❑ Applying for the grant also requires families to get in touch with **a medical team**. These medical professionals will be able to follow up on mothers and check on the development of the children in the long run.



# RESULT : Newborn's Development under the Project

- the babies received medical service at an early stage and significantly reduced the number of child delayed-development!



source: HDC, 18 Nov 2018

Gross Motor	Fine Motor	Receptive Language	Expressive Language	Personal and Social





# ASEAN Training Centre for Social Work

## ► In the occasion of Thailand Chairmanship of ASEAN and Social Welfare: ATCSW

- Next year, Thailand will launch the ATCSW in Bangkok
- Vision : *"to be a leading training centre on social work and social welfare in ASEAN."*



- Purposes of ATCSW
  - To provide training courses for development of social work and social welfare in ASEAN
  - To provide technical and professional skills, knowledge of social work and social welfare in ASEAN
  - To enhance a collaborative network for training of social work and social welfare among ASEAN Member States
- Three training courses that will be initially offered are on
  - *human trafficking*
  - *global social work and social welfare*
  - *social protection*

# Country Presentation by **Thailand**



ありがとう

고마워

谢谢

ขอบคุณ

THANK YOU