

# Child Poverty and Intergenerational Chain of Poverty

The 16th ASEAN & Japan High Level Officials  
Meeting on Caring Societies

December 5, 2018

Kanagawa University of Human Services

Yukio Shimbo

# 1. Why is it Difficult to See Poverty?

(1) People feel more settled when they are together with others who are in a similar economic class as them.

(2) Due to reason (1) above, it is difficult for people in situations of poverty to realize their own level of poverty.

(3) Due to reason (1) above, few people in the middle-income class and above have people in poverty situations around them.

(4) Due to reasons (2) and (3) above, it is difficult to see poverty.

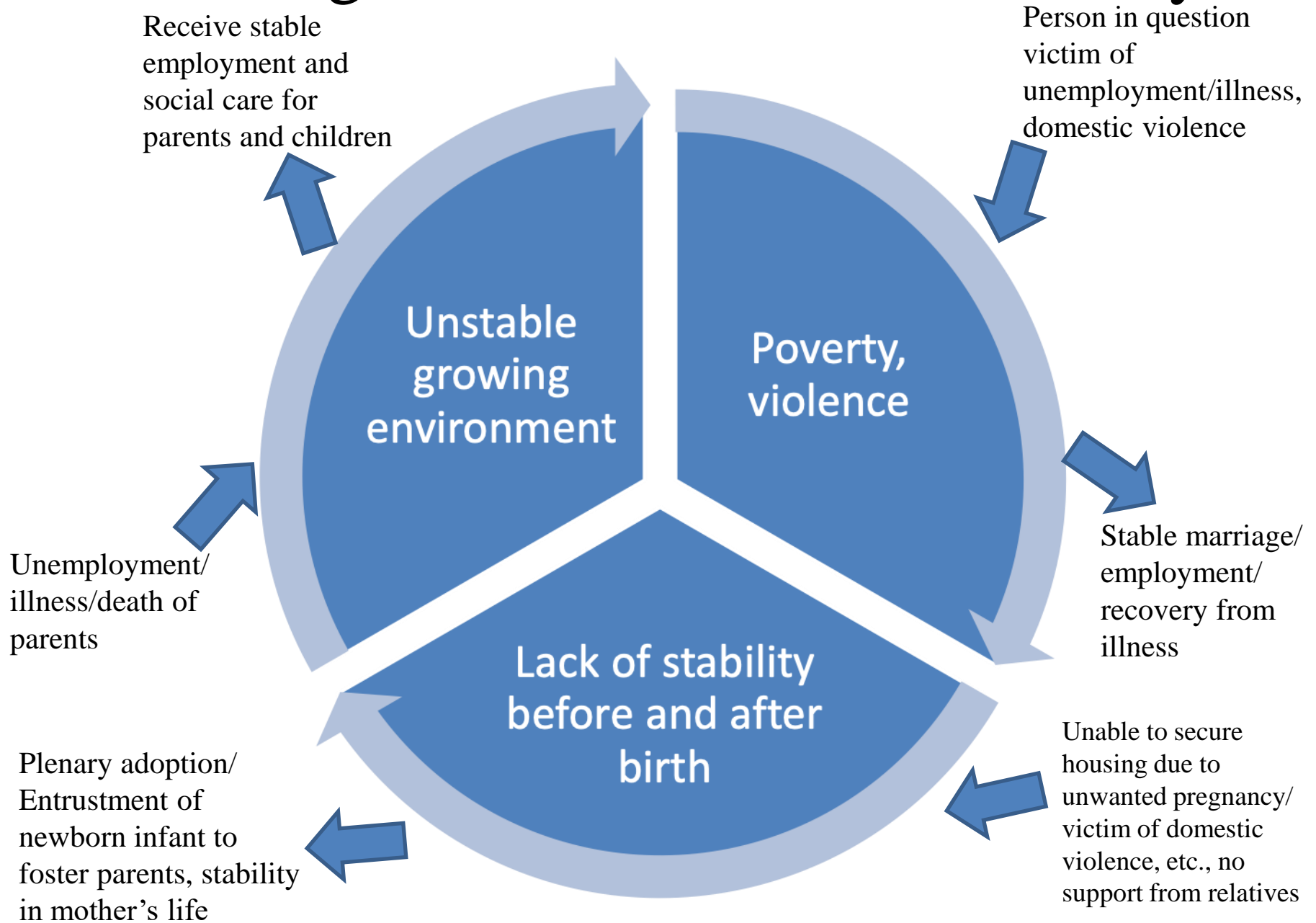
## 2. Second Generation of Poverty

(1) First generation of poverty: Family income falls at some point during the child's growth period. Although the mental and physical foundations for learning and life are being built, the family is unable to prepare the school fees necessary for the child to further his/her studies.

(2) Second generation of poverty (and third generation and thereafter): As it is difficult to fulfill the need for food immediately after birth, it is difficult to build the mental and physical foundations for learning and life. This in turn interferes with learning and life.

(3) Scholarships are effective for the first generation of poverty. However, from the second generation of poverty and after, it is necessary to have in place the basic premise of securing food, accommodations, and consultation support.

# 3. Intergenerational Chain of Poverty



# 4. Policy Responses to Child Poverty

- (1) Emotional response to parents' "perception of laziness"
- (2) "Absolute poverty" in relation to economic fluctuations
- (3) Recognition of need for "economic support" (livelihood protection)
- (4) Discovery of "relative poverty"
- (5) Need for "employment support"
- (6) Need for "scholarships" (secondary/higher education)
- (7) Importance of "elementary education" and "pre-school life"
- (8) Renewed recognition of importance of "food"
- (9) Recognition of the importance of the "period before and after birth"

## 5. The Periods Before and After Birth are Important

1. It is an important time that has a direct impact on whether or not a chain of poverty arises.

2. It is an important time for making life choices by both the mother and the child, including whether or not to give birth to the child, and whether or not to give raise the child herself.