



かながわの子どもたちの貧困対策 Poverty Measures for the Children of Kanagawa Prefecture

かながわ子どもたちの未来応援団
Kanagawa Children's Future
Supporting Team



SDGs

Sustainable Development Goals (SDGs)



SUSTAINABLE DEVELOPMENT GOALS
17 GOALS TO TRANSFORM OUR WORLD



Sustainable Development Goals agreed on by the world, to be achieved by 2030

Child Poverty

1

NO
POVERTY



Relative poverty rate of
children in Japan is 13.9%

1 in 7 children live in poverty



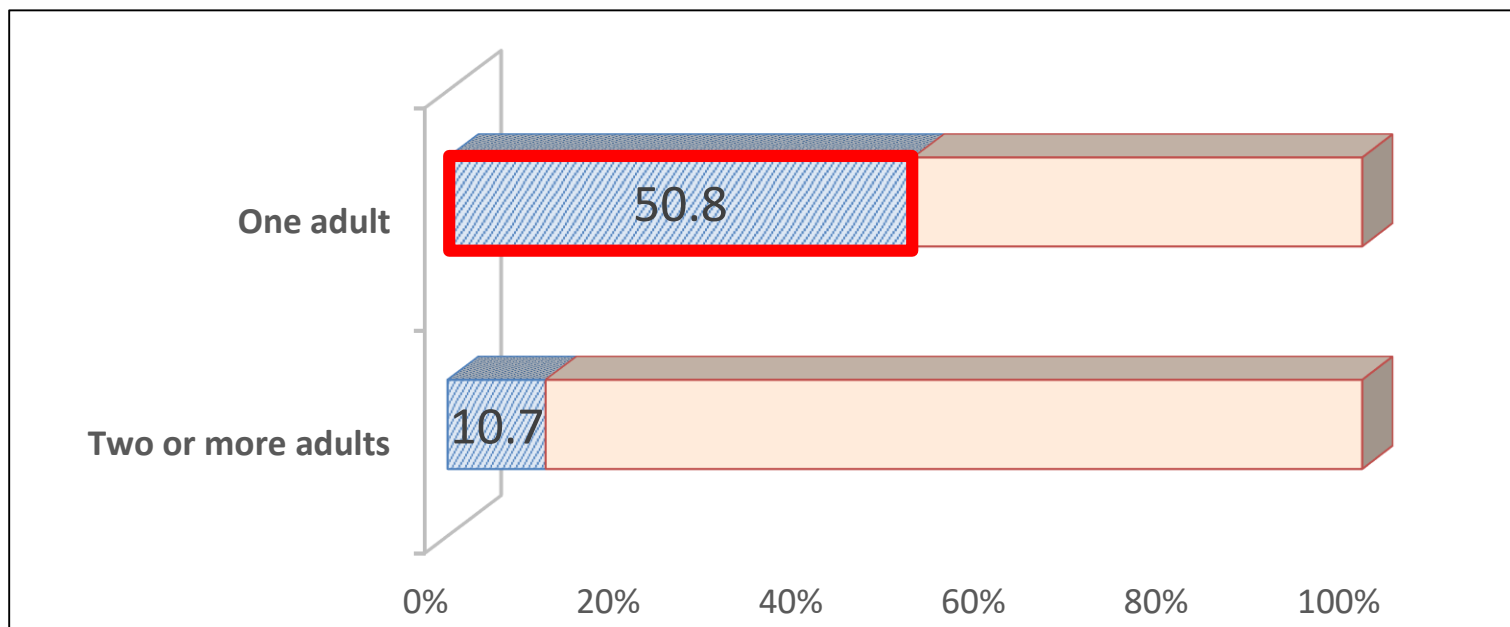
Relative poverty rate

Percentage of people forced to live with an income below half of the
average income

Source: 2016 Comprehensive Survey of Living Conditions

Child Poverty

Poverty rate among families with children
(households with actively working members)
(Relative poverty)



Source: 2016 Comprehensive Survey of Living Conditions

Four Major Policies of Kanagawa Prefecture

**Promoting counter-poverty
measures for children**

Child Poverty Countermeasures Promotion Plan

(1)
Educational
support

(2)
Life
support

(3)
Support for
employment
of parents/
guardian

(4)
Economic
support

Four Major Policies of Kanagawa Prefecture

Child Poverty Countermeasures Promotion Plan

(1)
Educational
support

- Assignment of school social workers at municipal high schools
- School fee subsidies for students at private high schools, etc.

Four Major Policies of Kanagawa Prefecture

Child Poverty Countermeasures Promotion Plan

(2) Life support

○ **Child support/learning support projects**

(Project to Promote the Independence of Needy Persons)

Four Major Policies of Kanagawa Prefecture

Child Poverty Countermeasures Promotion Plan

○ **Benefits to promote advanced job training for single-parent families**

(3) Support for employment of parents/guardian

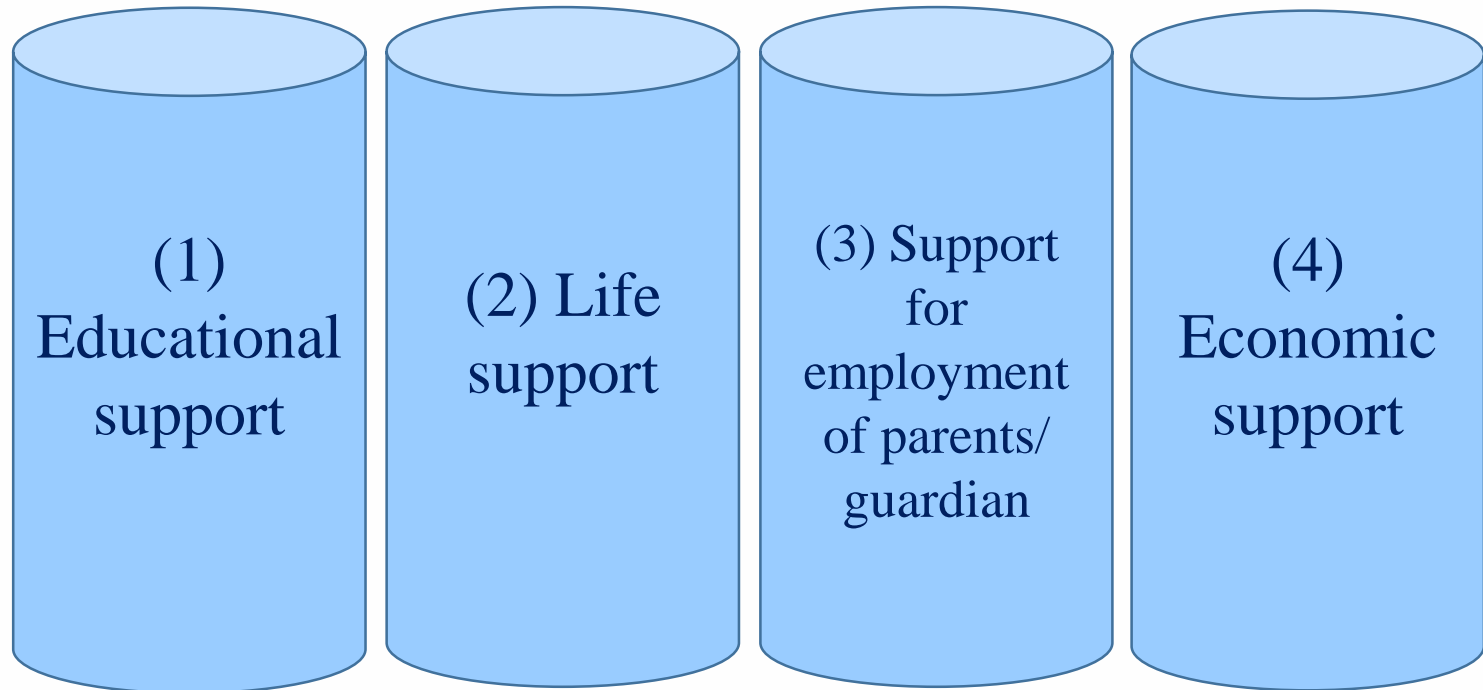
Four Major Policies of Kanagawa Prefecture

Child Poverty Countermeasures Promotion Plan

○ **Child support allowance for single-parent families**

(4)
Economic
support

Four Major Policies of Kanagawa Prefecture



Kanagawa Children's Future Supporting Team

Kanagawa Children's Future Supporting Team



Members

Special Supporter

Kiryu Hideaki



Speaker
Kanagawa Prefectural
Assembly

Leader

Yuji Kuroiwa



Governor

**Children Supporting
Ambassador**

Ai Sugiyama



**Former professional
tennis player**
Sports commentator

Special Advisor

Honami Yoshida



Professor
Kanagawa University of
Human Services

Kanagawa Prefectural Government (Secretariat)

**Relevant
organizations**

Governments

**Business
organizations**

University

Kanagawa Children's Future Supporting Team

Team members

Fields	Constituent members
Governments	Governor (Leader) Speaker (Special Supporter) Kanagawa Prefectural Board of Education Municipalities in Kanagawa
Business organizations	Kanagawa-ken Employer's Association Kanagawa Association of Corporate Executives Kanagawa Prefectural Federation of Chambers of Commerce and Industry 7 Other organizations
Relevant organizations	Kanagawa Prefecture Council of Social Welfare Kanagawa Scout Council Junior Chamber International Japan Kanagawa Bloc Council Kanagawa Dental Association 7 Other organizations
University	Kanagawa University of Human Services

Activities and Development of the Team

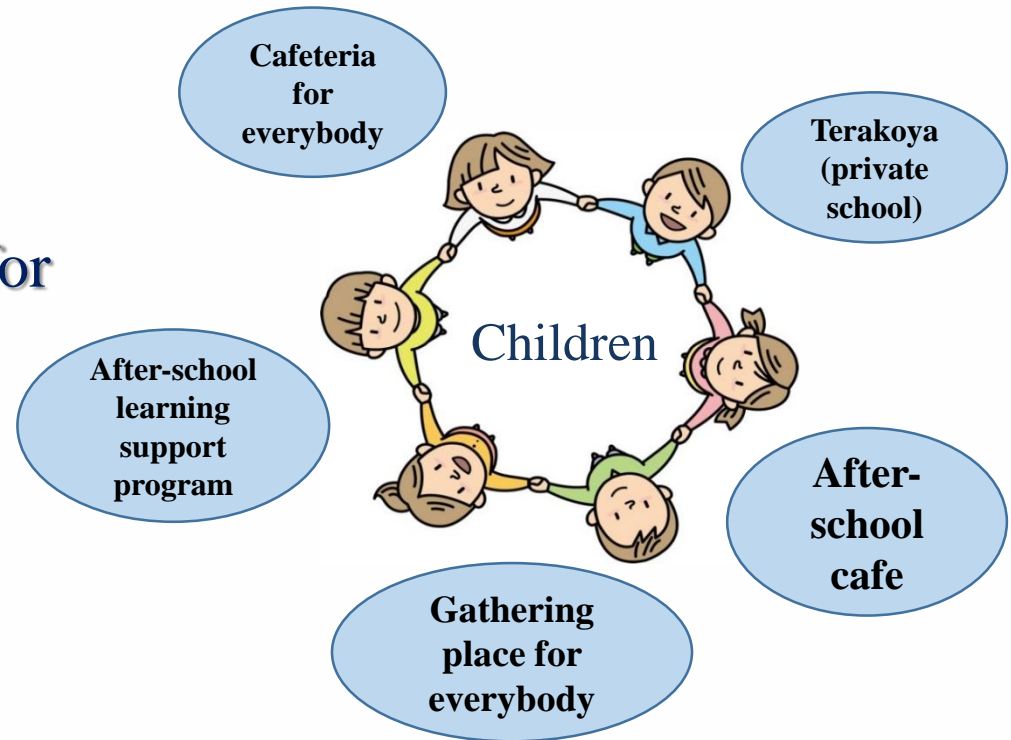
Expanding the Circle of Support for Children

Human Resource Training

Seminar on making a place for
children

To be held 3 times a year in
Jul., Aug. and Oct.

Places for children



Activities and Development of the Team

Expanding the Circle of Support for Children

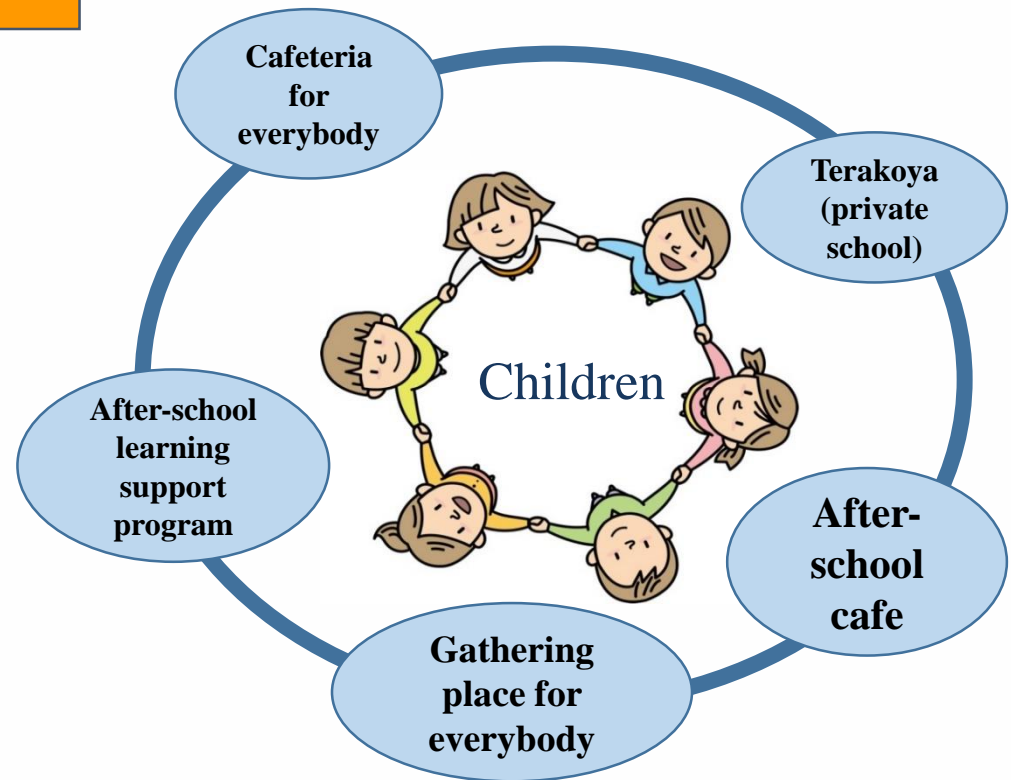
Network Building

Exchange meeting to build community network

To be held 3 times a year in Jul., Dec. and Jan.



Places for children



Activities and Development of the Team

Expanding the Circle of Support for Children

Matching 1

Website

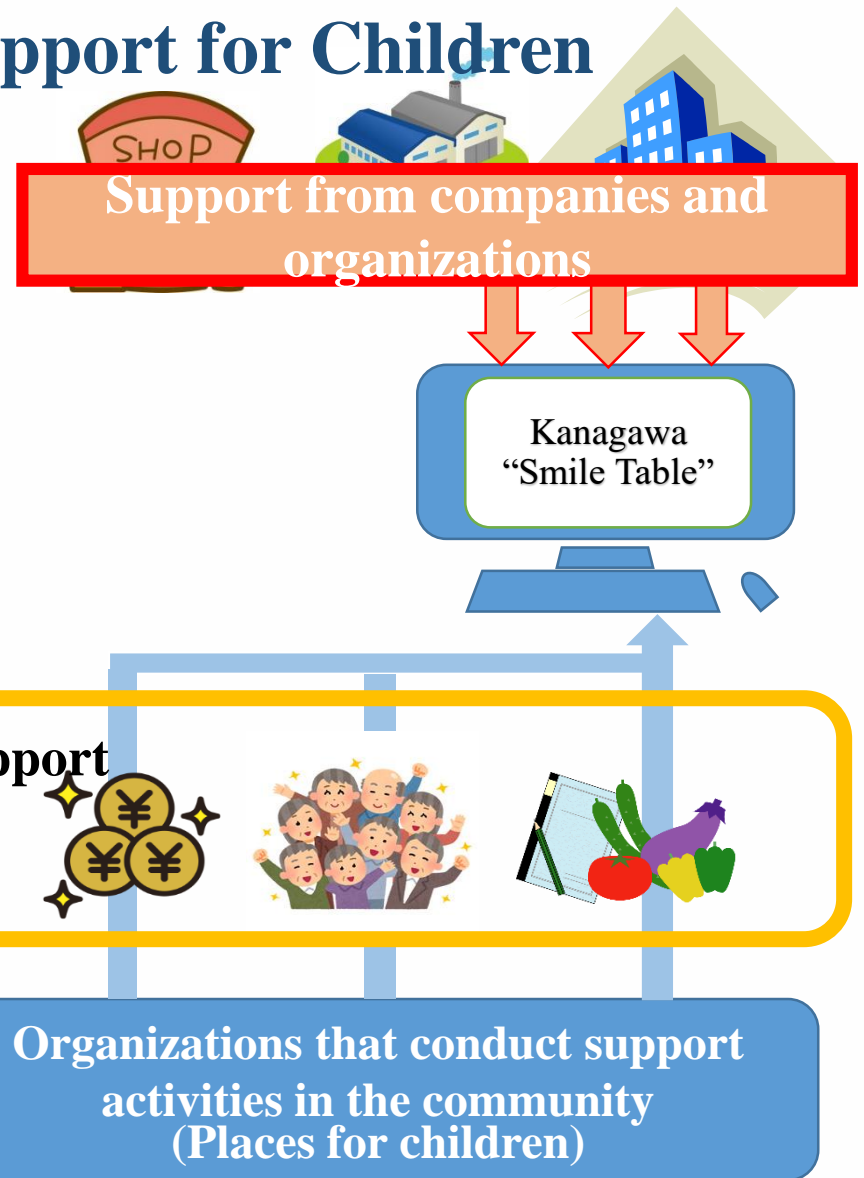
“Smile Table”

<http://www.pref.kanagawa.jp/docs/s4t/cnt/f536929/index180607.html>

Required support



Organizations that conduct support activities in the community
(Places for children)



Activities and Development of the Team

Expanding the Circle of Support for Children

Matching 2

Matching Forum

To be conducted once a year in Nov.



11.7
第2回
かながわ子どもの未来応援団
マッチングフォーラム
参加費無料

すべての子どもたちの
笑顔あふれる
かながわへ

平成30年 11月7日(水) 13:30~17:00 (開場 13:00)
厚木市文化会館小ホール (厚木市厚木 1-9-20)
定員 200名 (事前申込み制)

■当日議題
「すべての子どもたちの笑顔あふれるかながわへ」
東郷 芳 (FASIL 代表) 氏 (日本大学 文芸学部 准教授)

■参加希望
◎ASHL (アッシュール) 厚木スポーツヘルスラボ
◎ASHL あつ子ども食堂
◎厚木の無料学習塾なここの手 ◎田の家様 ◎厚木ライオンズクラブ
◎一般社団法人 JJA 経済総合研究所

■パネルディスカッション
「地域で変え、見守る子どもの未来」
ファシリテーター ◎子どもの未来やサポートオフィス代表 米田 佳知子 氏
コーディネーター ◎厚木大学 文芸学部 教授 東郷 芳 氏
パネリスト ◎厚木市教育委員

■パネルディスカッション (事例発表団体等との連携交換)

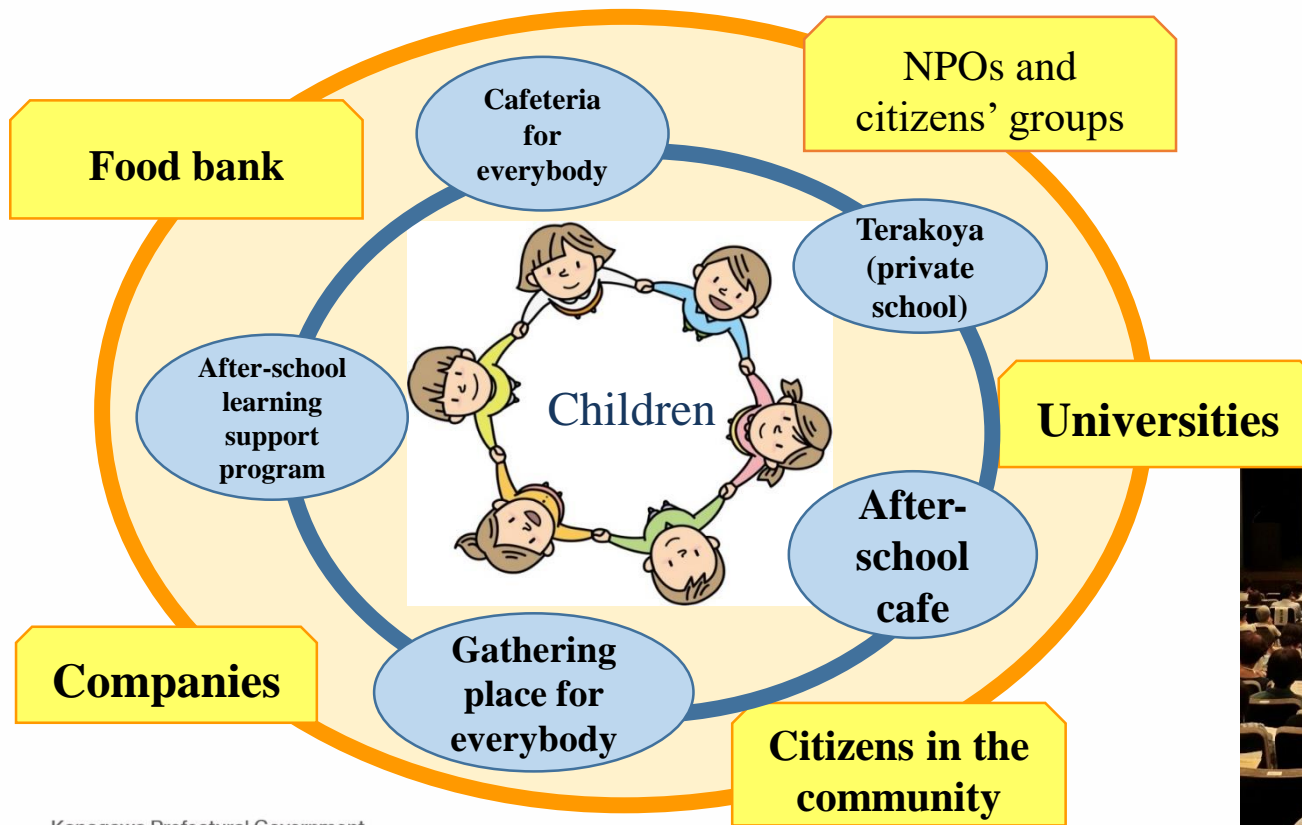
主催 ■神奈川県、共催 ■厚木市 (詳細と参加申込みは要項へ)

Activities and Development of the Team

Expanding the Circle of Support for Children

Promotion and Education

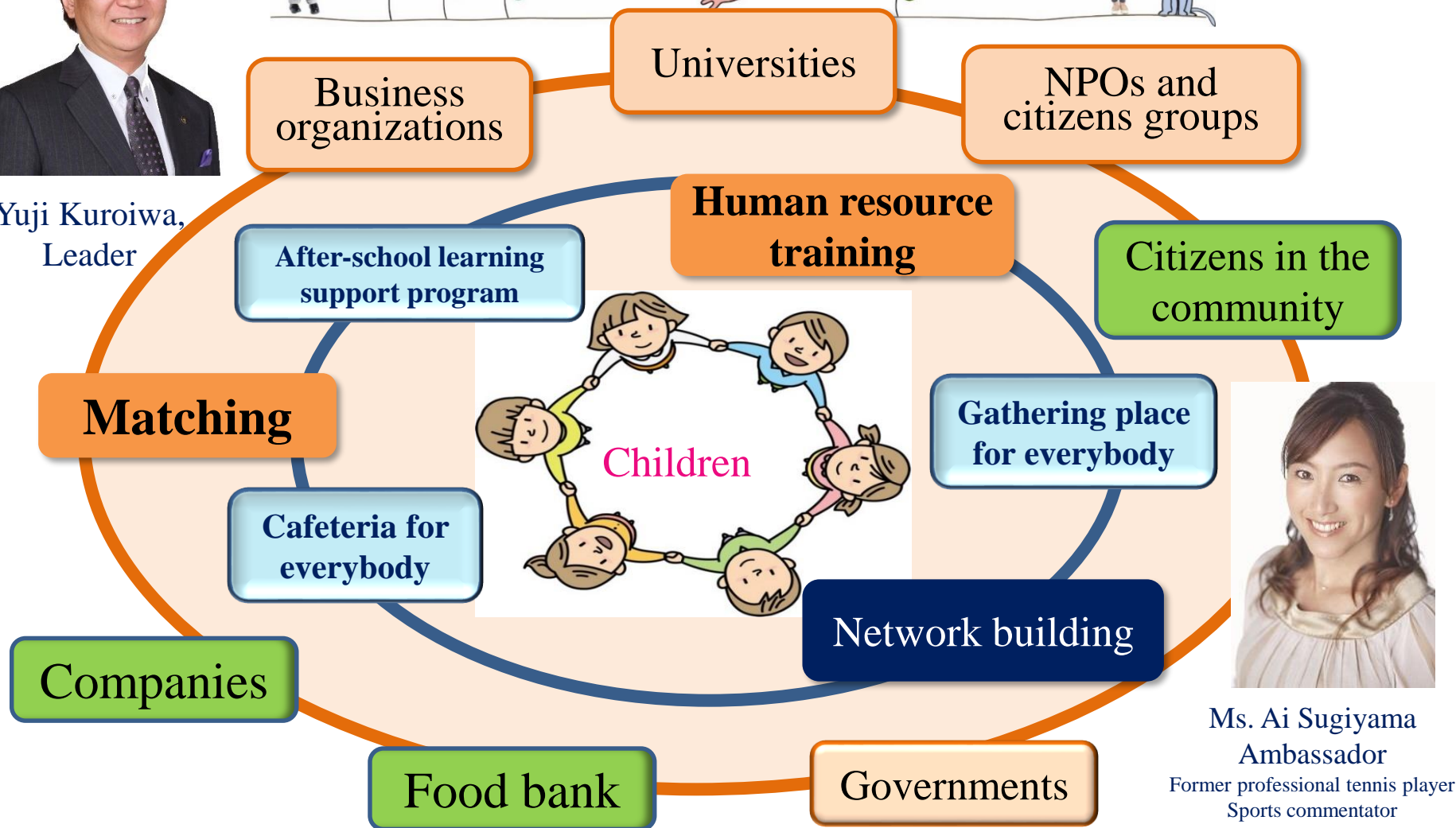
Children Support Forum



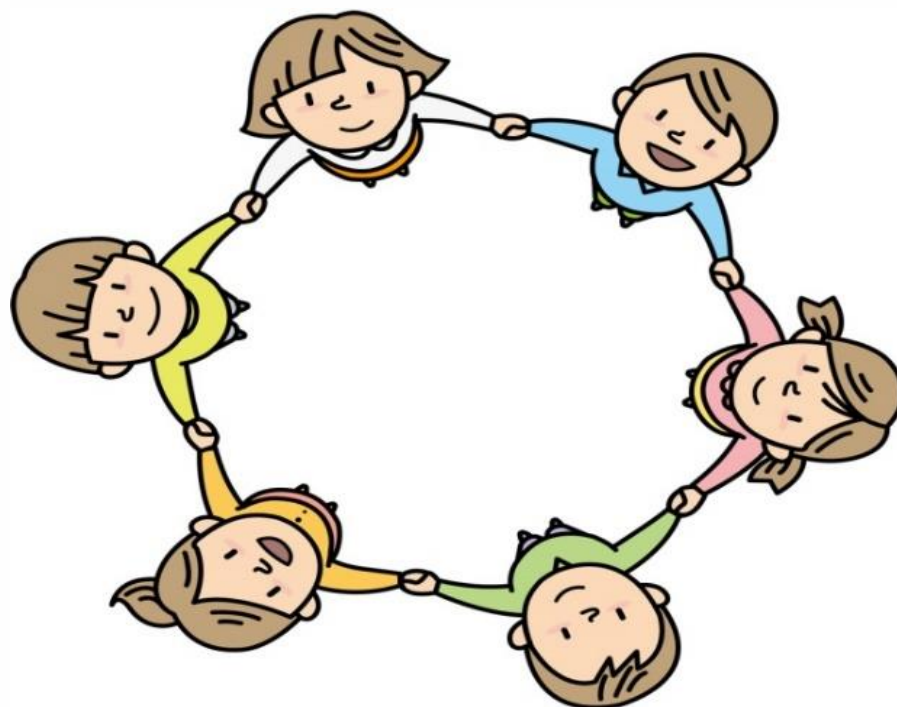
Kanagawa Children's Future Supporting Team



Yuji Kuroiwa,
Leader



Ms. Ai Sugiyama
Ambassador
Former professional tennis player
Sports commentator



神奈川県 福祉子どもみらい局 子どもみらい部 子ども支援課
Children Support Division
Children's Future Department
Welfare and Children's Future Bureau, Kanagawa