

Kanagawa Prefectural Children's Self-reliant Living Assistance Center "Kirari"



Overview of Facility

■ Address

991-1 Kataoka, Hiratsuka City, Kanagawa Prefecture

■ Property

Total area of premises: 20,365.72 m²

Total floor area: 9,114.53 m²

■ Main facilities

Total capacity: 96 people

- **Infant care home (Capacity: 12)**
 - **Welfare facility for children with disabilities (Capacity: 42)**
 - **Child psychological treatment facility (Capacity: 42)**
- ***Complex-style child welfare facility (integrated management)**

Small-scale
living units, and
residence that
give
consideration to
family-like
living
environments

Three Facilities

Infant care home (Mirai)

- Facility that accepts and brings up children of about 0 – 2 years old who cannot be raised by their parents/guardians, have been abused, have suspected disability, etc.

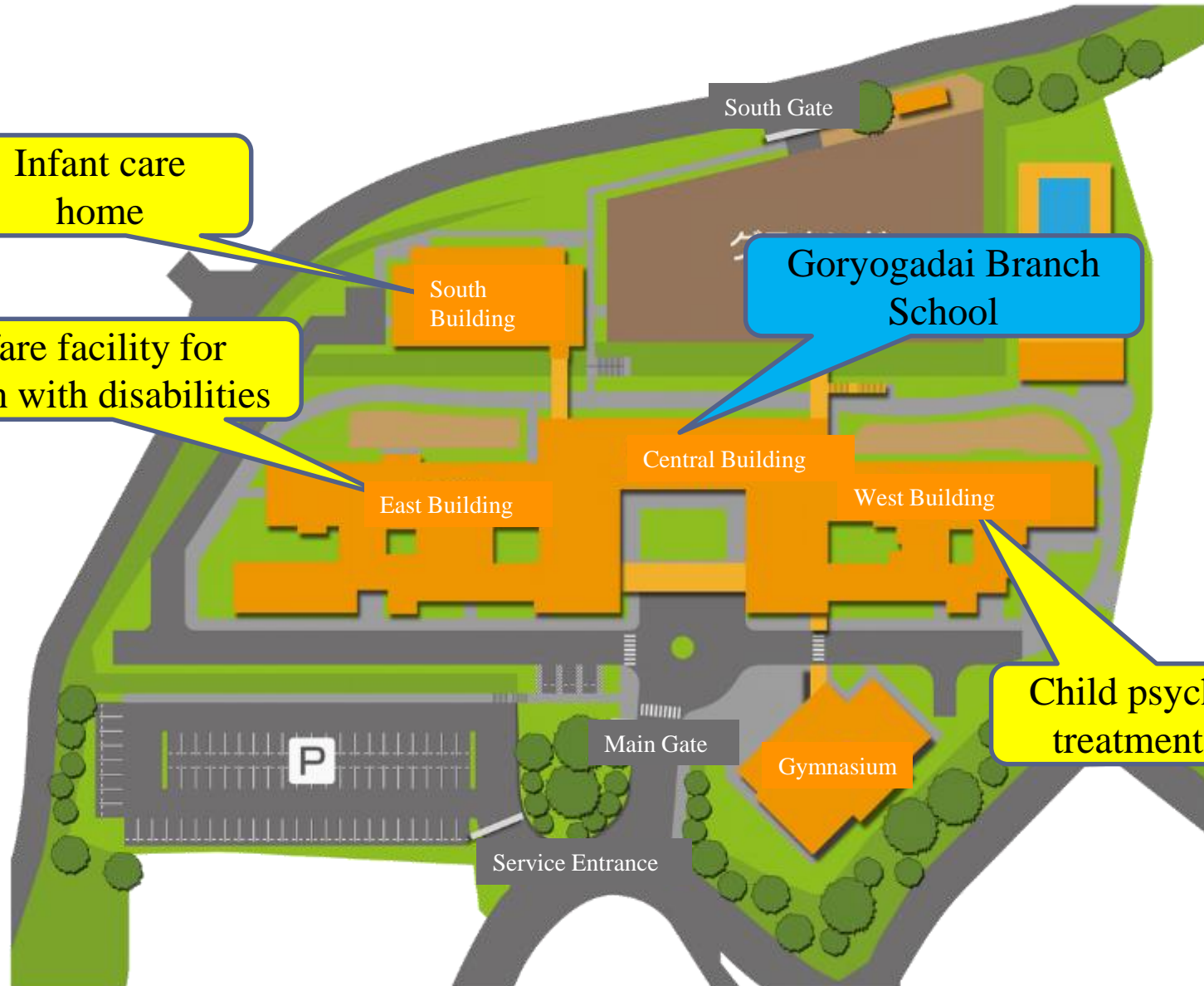
Welfare facility for children with disabilities (Hibari)

- Facility that accepts children of about 2 – 18 years old with intellectual disability or developmental disorders accompanying intellectual disabilities, and which provides support for their daily lives and independent living.

Child psychological treatment facility (Ginga)

- Facility that accepts children of about 2 – 15 years old for about two years, who find it difficult to adapt to social life due to family environment, ability to make friends in school, or other environmental reasons, and which provides them with psychological treatment and life guidance.

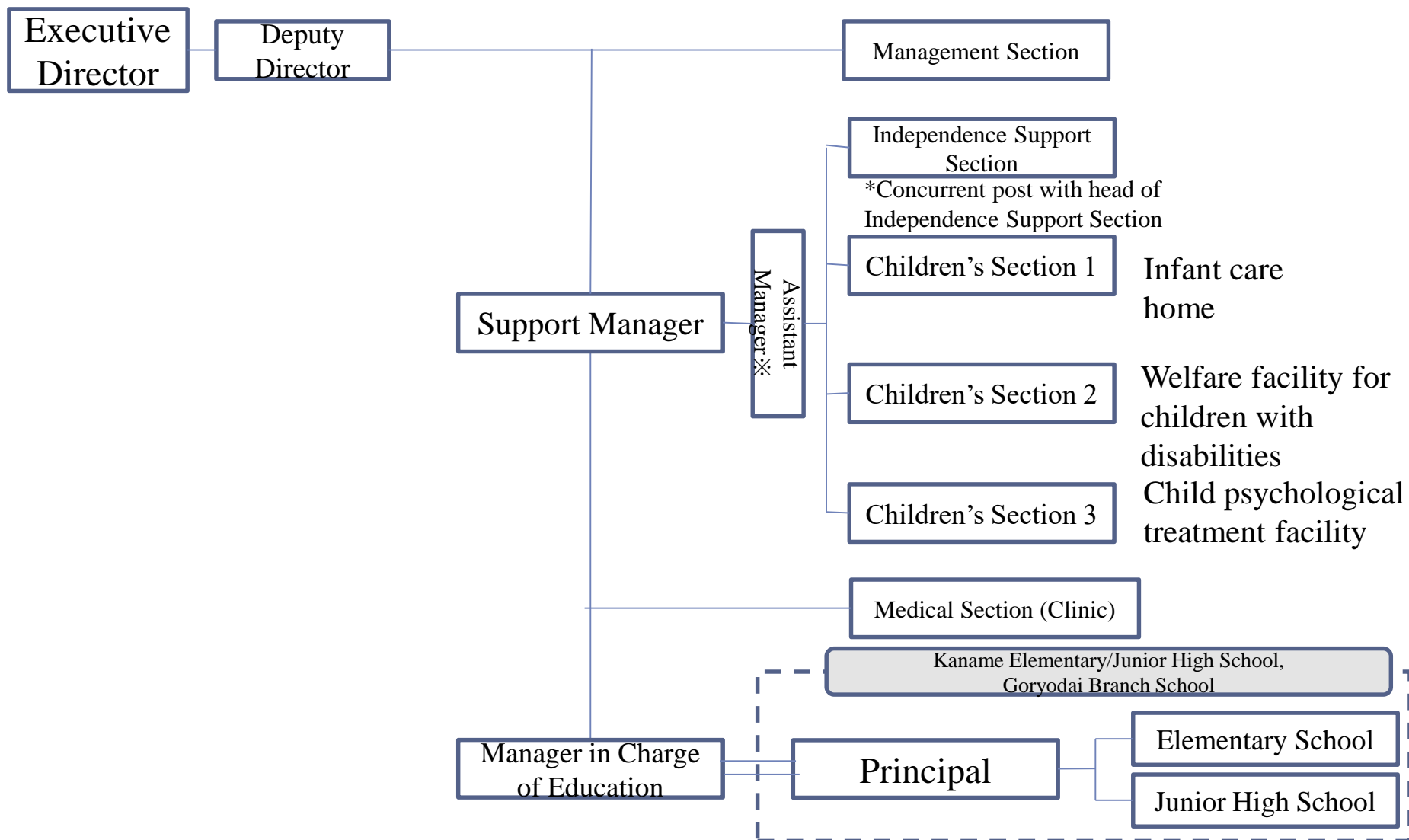
Building Layout



Bird's-eye View



Organizational Structure



Basic Philosophy

1 To provide a warm life, and foster children's “will to live” and “ability to connect.”

2 To draw close to each individual child and provide support that prioritizes their best interests.

3 To harness the professional functions of the facility to contribute to the local community.

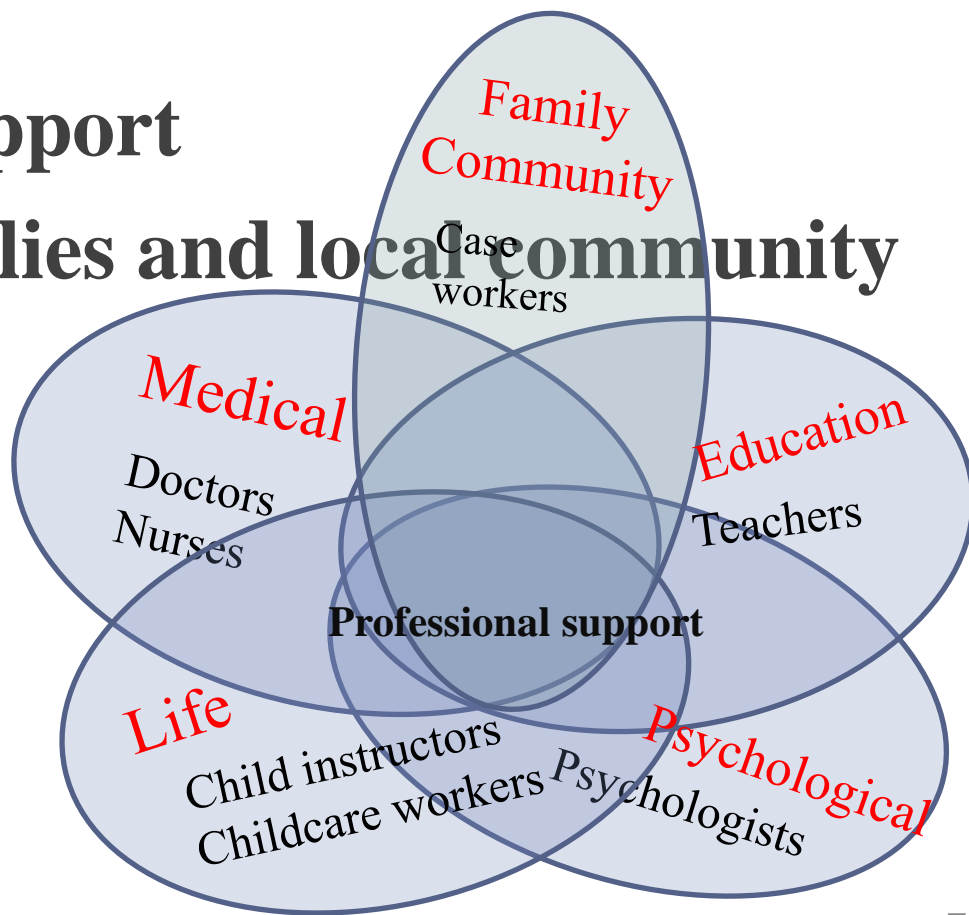
Support Provided by the Center

- Life support
- Educational support
- Medical support
- Psychological support
- Support for families and local community

Support through
multi-occupational
collaboration



**Professional support
corresponding to age
and disability**



Support Staff

■ Life (floor/unit) staff

- Nurses, childcare workers, child instructors, psychologists

■ Educational (branch school) staff

- Teachers (elementary/junior high school)

■ Medical (clinic) staff

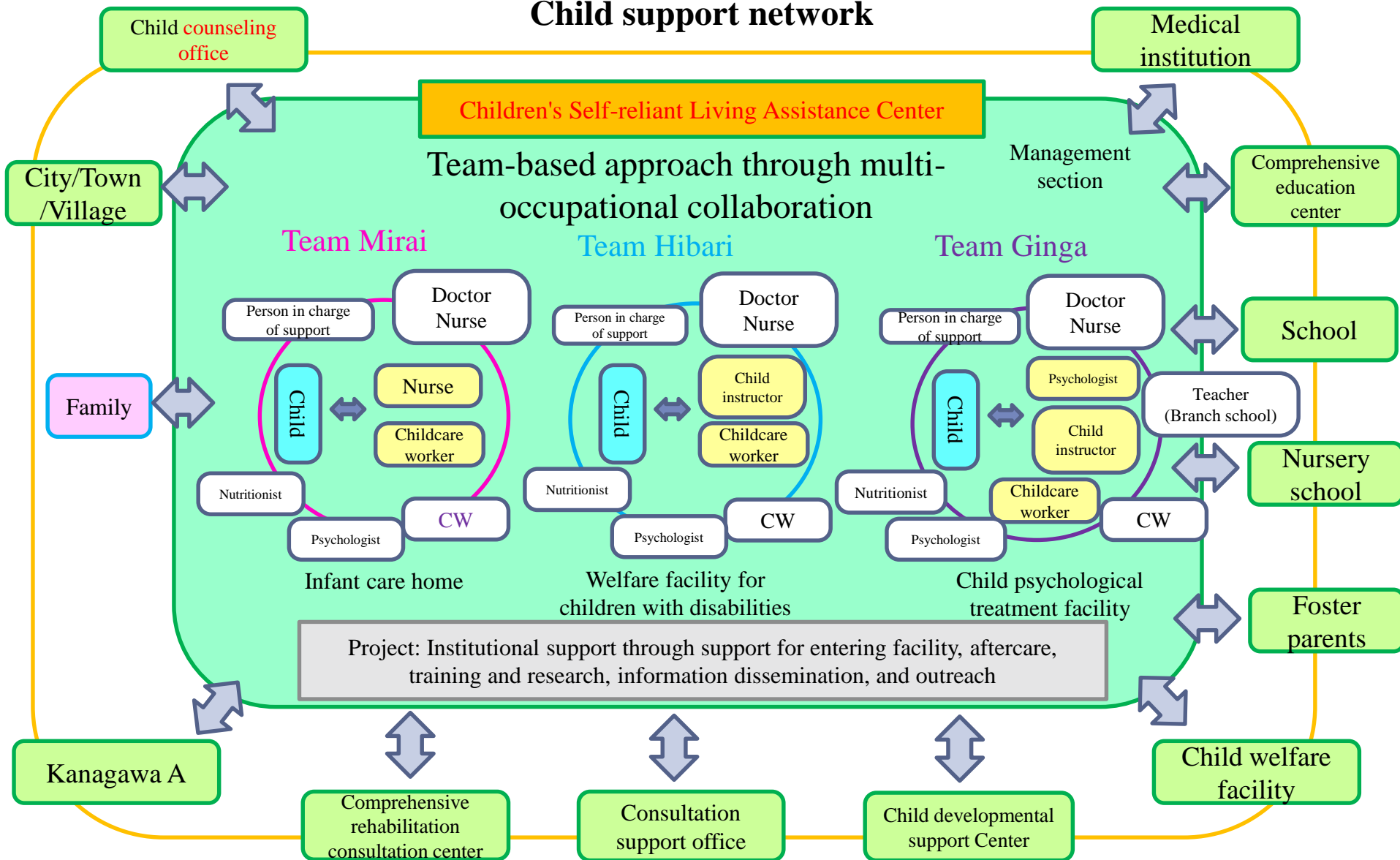
- Doctors (Child psychiatry, pediatrics, etc.), nurses

■ Other professional support staff

- Psychologists ○ Social workers
- Child instructors (activity support, support for developmental disorders)
- Professional consultants for foster parent support
- Nutritionists

Illustration of Multi-occupational collaboration/ Multi-institutional collaboration

Child support network



Status of Children Accepted into the Facility

Enrollment Status for Users (as of June 1, 2018)

	Infants	Toddlers	Elementary school students	Junior high school students	Senior high school students and older	Total
Infant care home [Capacity: 12]	5 (3)	6 (1)				11 (4)
Welfare facility for children with disabilities [Capacity: 42]※		1	14 (1)	8	9	32 (1)
Child psychological treatment facility [Capacity: 42]			14	7		21
[Capacity: 96]	5 (3)	7 (1)	28 (1)	15	9	64 (5)

Figures in brackets () show the number of children under temporary protection (breakdown). Excludes the number of disabled children accepted on a short-term basis.

* [Capacity] Long-term residents: 36 (including short-term residents using vacancies) + Short-term residents for annex establishments, 6 children

■ Places children lived in before entering facility (as of June 1, 2018)

	With family	Facility	Foster parents	Medical institution	Other
Infant care home	3			8	
Welfare facility for children with disabilities	2 3	8		1	
Child psychological treatment facility	1 2	8		1	
Total	3 8	1 6	0	1 0	0

■ Main reasons for entering facility (as of June 1, 2018)

	Abuse	Parents' illness	Family relationships	Improvement in behavior	Other
Infant care home	9	1			1
Welfare facility for children with disabilities	2 6	3	2	1	
Child psychological treatment facility	1 7	1	1	2	
Total	5 2	5	3	3	1

■ **Infant care home (~ May 31, 2018 No. of children: 29)**

- **Children with disabilities: 4 (13.8%)**
- **Abused children: 22 (3 SBS) (75.9%)**
- **Newborn infants: 5 (17.2%)**

■ **Welfare facility for children with disabilities**

○ **Degree of disability**

Most severe/Severe 34.3%

Intermediate 15.6% Mild 50%

- **Developmental disorder: 13 (40.6%)**
- **Abused: 26 (81.3%)**

■ Child psychological treatment facility

○Developmental disorder: 13 (61.9%)

○Intellectual disability: 7 (33.3%)

○Abused: 17 (81.0%)

■ No. of children on psychiatric medication

(Welfare facility for children with disabilities, child psychological treatment facility)

○28 children (52.8%)

■ Change of measures from other facilities

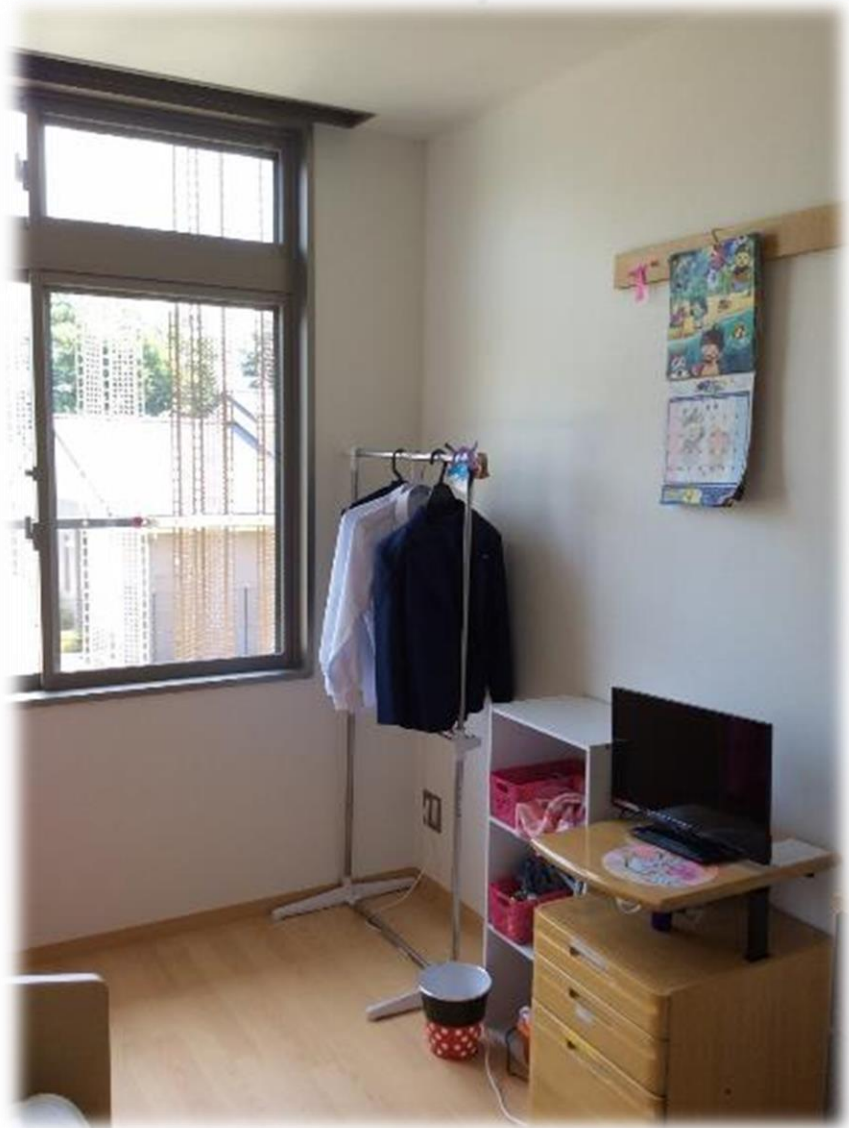
○Welfare facility for children with disabilities: 7 children (21.9%)

○Child psychological treatment facility: 8 children (38.1%)

(Infant care home “Mirai”)



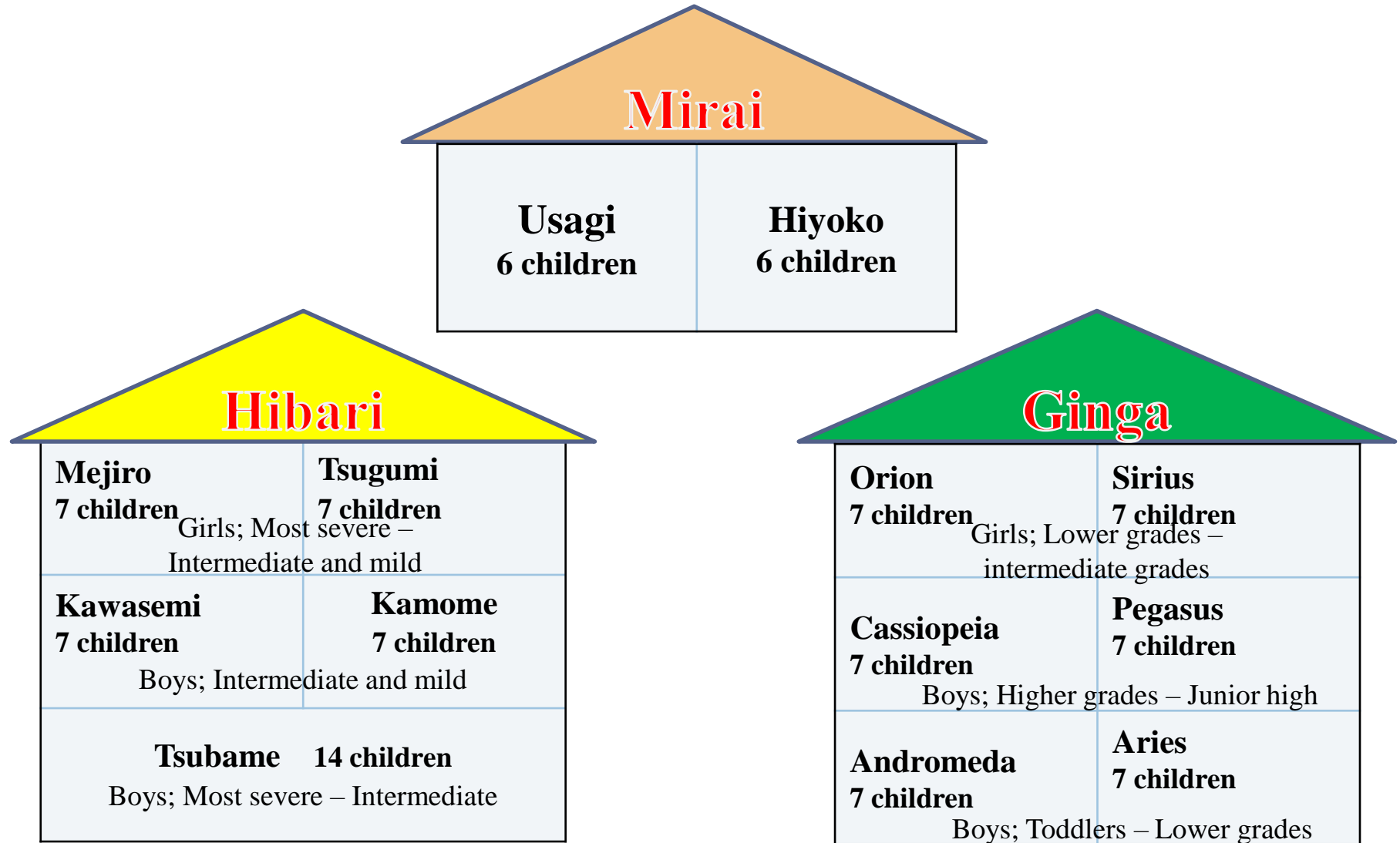
(Welfare facility for children with disabilities “Hibari”)



(Child psychological treatment facility “Ginga”)



Composition of Living Units



Branch School



Medical Section (Clinic)



Psychology Office



Activity Room

