

# **Community-based Support for the Elderly**

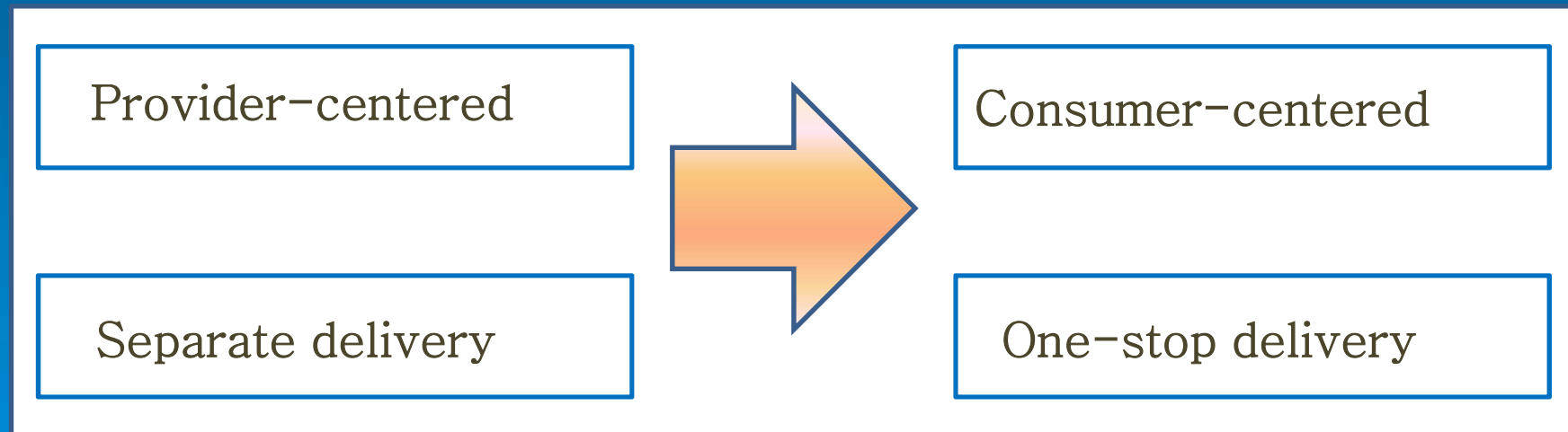
**Seong Jae-kyung  
Senior Deputy Director  
Ministry of Health and Welfare  
Republic of Korea**

# 1. Overview of the Project

## Purpose

Mobilize community resources and combine them into tailored services for long-term care recipients and other elderly

- Remove blind spots of welfare services



# 1. Overview of the Project

## ● Need

### Consumer-centered

- **Identify needs, mobility, economic means of consumers**
- **Develop care plans and link needed services**
- **Focus on needs and choice of consumers**

### Integrated delivery

- **Conduct integrated case management**
- **Act as a one-stop contact place**
- **Resolve information divide**
- **Provide necessary services integratedly**

# 1. Overview of the Project

## ● Project description

Comprehensive  
counseling

**Provide counseling and conduct needs assessment on long-term care recipients identified through the National Health Insurance Service or those who make request for counseling**

Resource  
management

**Create a network of public and private resources available in the community**

**Provide information on the resources and training of how to use them for LTC users and institutions**

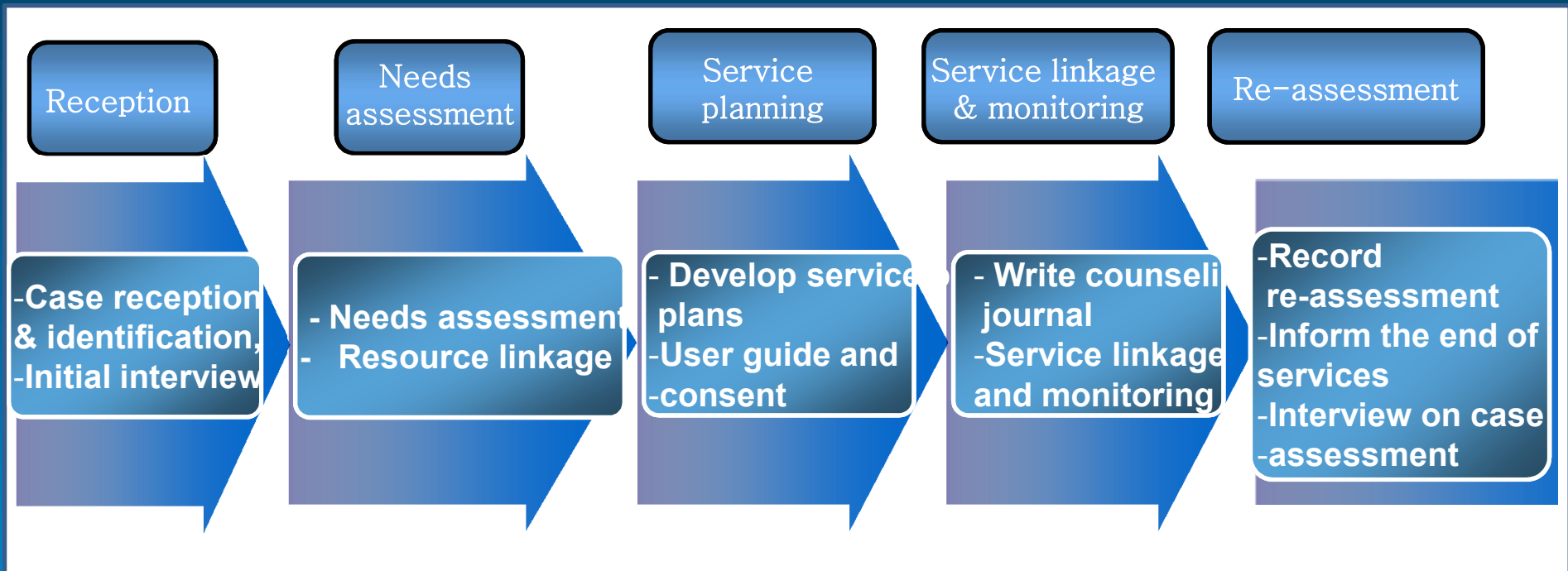
Partnership  
building

**Strengthen cooperation between related organizations**

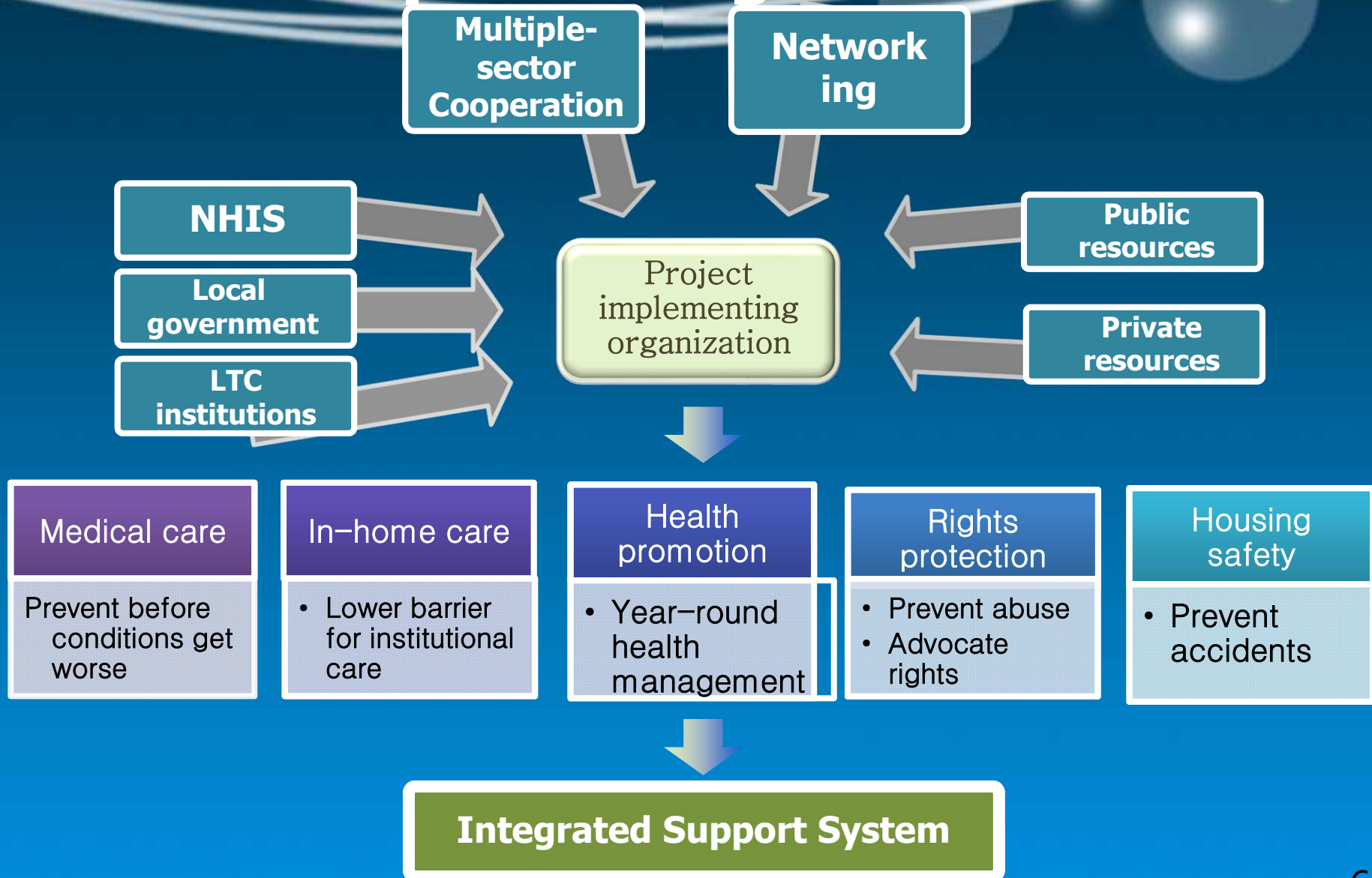
**Coordinate or integrate resources and services**

# 2. Project Implementation

## ● Counseling and Resource linkage



# 3. Resource Management & Partnership Building



**Thank you**