

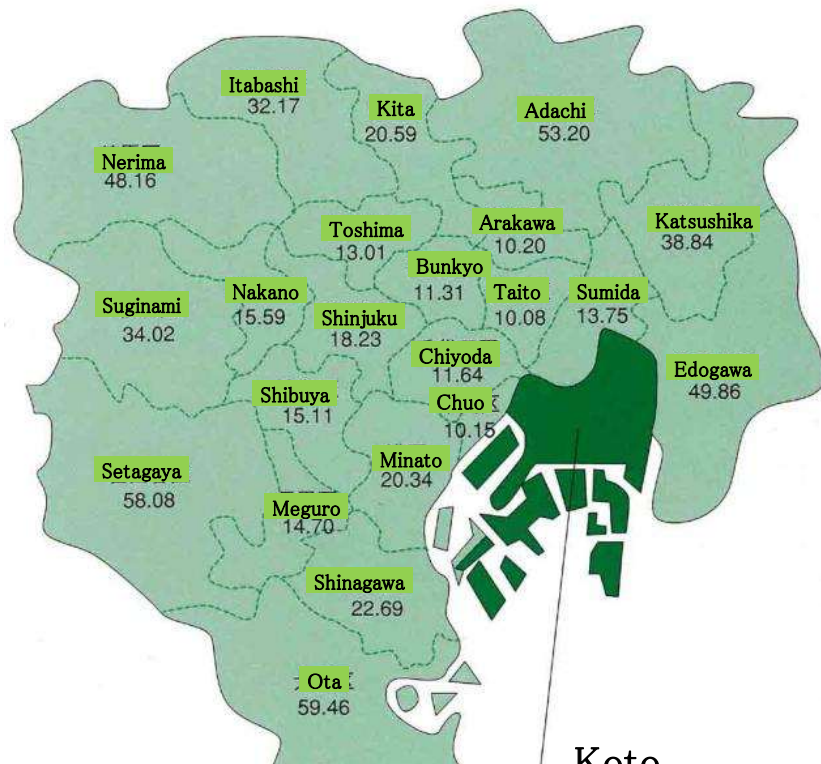


Social Welfare Corporation “Camellia”

Organization & Facility Overview



➤ Elderly Population in Koto Ward



1. Koto City Population Distribution (January 1, 2013)

	Population	Percentage
Aged 0 -14	59,454	12.4%
Aged 15 - 64	324,762	67.6%
Aged 65 -	96,055	20.0%
Total	480,271	

2. Average Nursing Care Level (December 31, 2012)

	Population	Percentage
Support Level 1	2,543	16.2%
Support Level 2	2,342	15.0%
Care Level 1	2,381	15.2%
Care Level 2	2,573	16.4%
Care Level 3	2,270	14.5%
Care Level 4	1,997	12.8%
Care Level 5	1,549	9.9%
Total	15,655	

3. Number of Elderly Residing at Facilities 2,260 (December 31, 2012)

4. Number of Elderly on Waiting List for Facilities
2,077 (December 31, 2012)

5. Average Waiting Time for Admission to Facilities (December 31, 2012)
25.5 months

One of the Largest Welfare Service Complexes in Koto City (From infants to the elderly)

3 Facilities, 13 Services – Artist's Conception



Long-term Care Health Care Facility
Keystone
Opened in April 2008

Intensive Care Home for the Elderly
Camellia
Opened in March 2010

Maternal and Child Living Support Facility
Parkside Kameshima
Opened in April 2008

Kameshima Elementary School
Memorial Park
Opened in May 2008





➤ Organization Information

◆ Establishment December 26, 2006

◆ Location 3-36-13 Kameido, Koto-ku, Tokyo

◆ Business Content: Maternal and child living support/
Nursing care for the elderly

◆ Characteristics

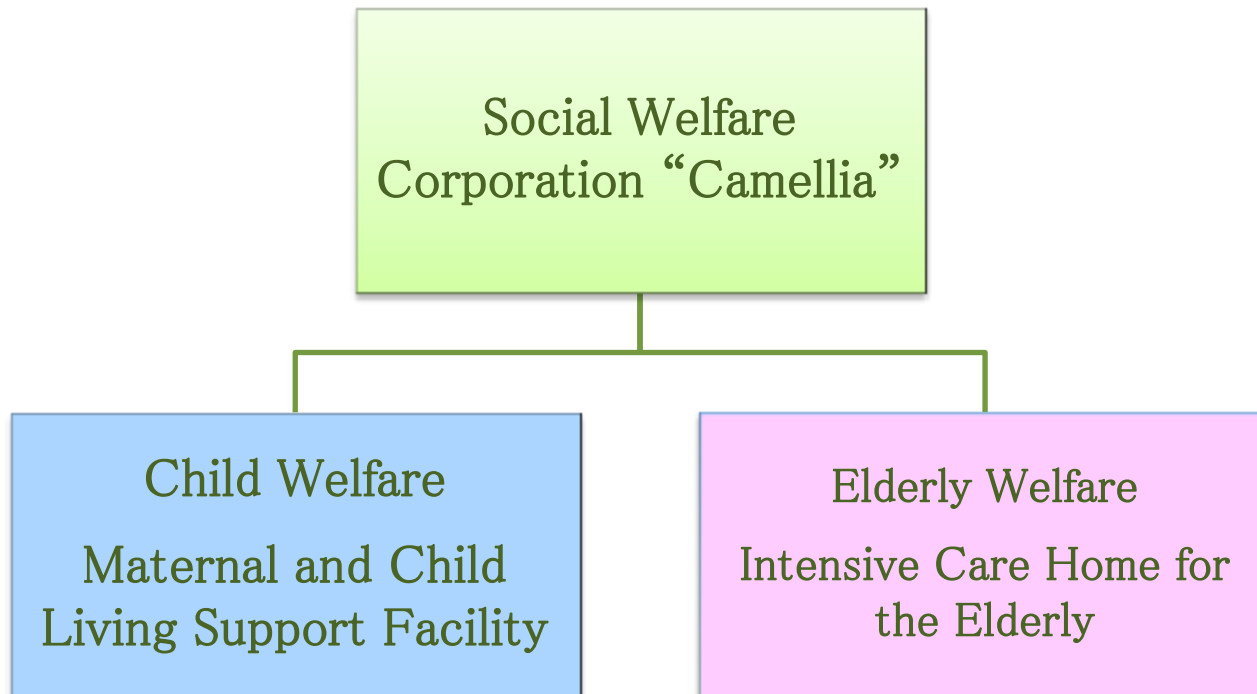
(1) Largest health & welfare facility in Koto Ward

(2) 3 facilities and 13 on-site health & welfare services

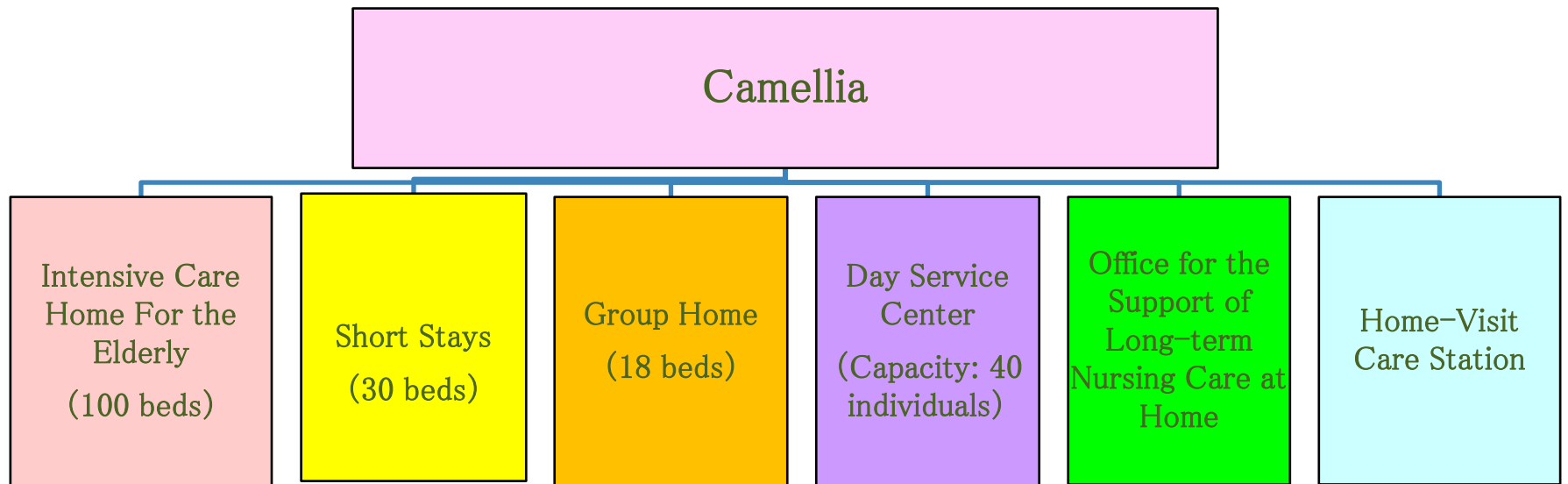
(3) The only maternal and child living support facility in Koto Ward



➤ Business Content

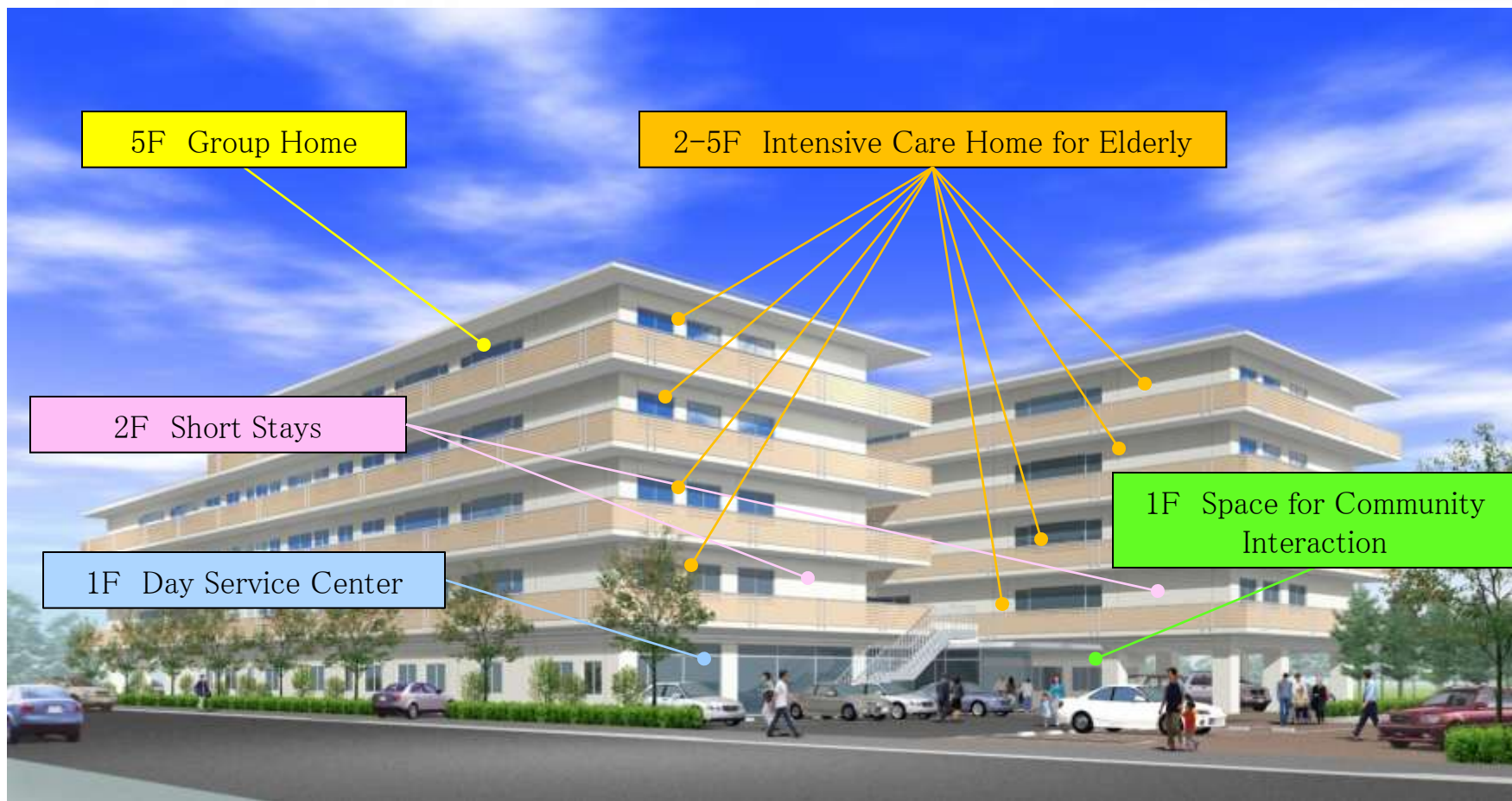


➤ Elderly Welfare - Business Structure





➤ Complex



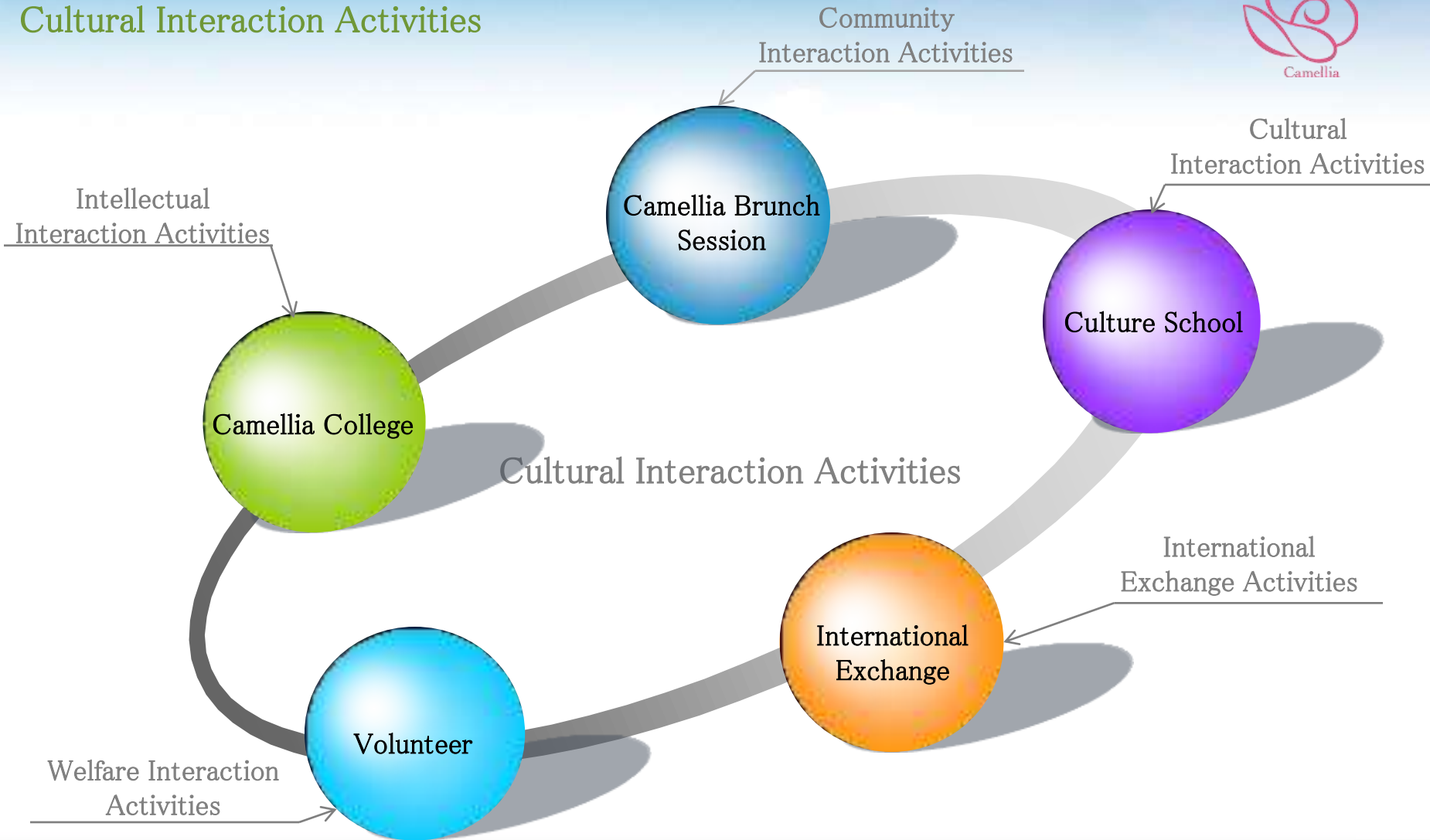
➤ Kameshima Elementary School
(Photo taken in 1982)



➤ Current View



➤ Characteristics of Social Welfare Organization Camellia - Cultural Interaction Activities



➤ Intellectual Interactive Activities



Camellia College

We open the facility to the community and through Camellia College to provide opportunities for a wide range of individuals to participate in intellectual and other interactions, and exchange opinions with one another.

The 32nd Camellia College “Management of a Village with 1,000 residents”



The 31st Camellia College
“Medical Care in Cambodia” - Ms.
Kazumi Akao, Nurse, Angkor Hospital
For Children

The 30th Camellia College
“Education Series” -
Mr. Ichiro Miura, First
Principal, Former Kameshima
Elementary School



➤ Community Interaction Activities

Camellia Brunch Session

Started
Aug. 7th,
2011



The Camellia Brunch Session is a community interaction service held at the Library Café on the 1st floor of Camellia between 9:00 and 11:30 every Sunday. In order to facilitate the use of the facility as a base of community interactions, we provide free coffee, soft drinks, and freshly baked bread.



➤ Cultural Interaction Activities



Culture School

Neighborhood Café - Otonari Sanchi

This group provides a comfortable place and opportunities for interaction to people in the community. We gather at the Library Café on the 1st floor of Camellia every Thursday, for a wide range of events. With the motto, "Let's visit our neighbors!" we work to deepen interaction among the people around Kameido.



Kids Musical Class

Let's have fun singing, dancing, and acting!



We have what you are looking to do!!

$$\text{Fun} + \text{Courage} = \text{Fulfillment!}$$

■ Fun lessons by professional teachers who are active in their field

■ Recitals: Scheduled twice per year

S&S Entertainment

This class features a full-scale stage performance with actors and students (from adult classes) .

➤ Welfare Interaction Activities



Volunteer

Variety entertainment show
by *Ahiru-za*



Musical entertainment by
*Heartful Chorus & Harmonica
North Sand*



Musical show
by *S&S Entertainment School*

➤ International Exchange Activities



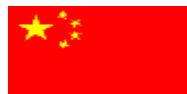
International Exchange



04.22.2013 Visit by members of the Thailand Diet.



04.25.2013 Visit by members of the Taiwan Prefectural Assembly.



05.12.2013 Visit by individuals from China involved in construction.



06.22.2013 Visit by staff from the New York Museum of Modern Art



07.18.2013 Interview by Taiwanese economic journal "Business Today".



07.24.2013 Visit by Thai national and local officials



09.19.2013 Visit by representatives of the Industrial Safety and Health Association of the R.O.C. (Taiwan)



12.04.2013 Visit by delegations of the 11th ASEAN and Japan High Level Officials Meeting on Caring Societies





A blue paper airplane is flying in a bright blue sky with white clouds. The scene is viewed through an open window with a white frame. The sky is filled with soft, white clouds, and a single green tree is visible on a rolling green hill in the distance. The overall atmosphere is bright and hopeful.

— Giving Shape to Dreams —

Thank You !