

Social Welfare Corporation “Camellia”

Providing User-Oriented Health and Welfare Services



(1) Intensive Care Home for the Elderly

This facility accepts elderly requiring long-term care for whom home care presents challenges. We provide assistance for meals, bathing, and toilet, plan appropriate recreation, and support health management.

[Capacity: 10 units, 100 individuals]



(2) Short Stays

This facility provides short-stay services for elderly requiring long-term care who are generally cared for at home to provide relief to primary caregivers who need a break, have important appointments like ceremonial occasions, or find it necessary to care for other family members who have been taken ill. We provide assistance with meals, bath, and toilet, plan appropriate recreation, and support health management.

[Capacity: 3 units, 30 individuals]



(3) Day Service Center

This facility provides day service for elderly requiring long-term care (support) who are cared for at home. We provide transportation, assistance for bathing and meals, opportunities for consultation and advice regarding daily activities, support health management, plan appropriate recreation, functional training, and other services. Services focus on support designed to help the individual live an independent life, and maintain and improve the physical function.

[Capacity: 40 individuals]



(4) Group Home

This service is designed to help elderly with dementia live as independently as possible in a home-like environment. By providing the opportunity for these individuals to live together in a small group, we help delay the progression of symptoms and improve quality of life.

[Capacity: 2 units, 18 individuals]



(5) Home-Visit Care Station

Home- and nursing care staff make home visits to provide assistance for independent life. Services covered by Long-term Nursing Care Insurance include assistance for meals, bath, toilet, dressing and undressing, hygiene, hospital visits (physical assistance), as well as cleaning, laundry, and shopping (lifestyle assistance).



Social Welfare Corporation “Camellia”

(6) Office for the Support of Long-Term Nursing Care at Home

For elderly individuals certified as requiring long-term care (Certification of Needed Long-term Care) under the Long-term Nursing Care Insurance system, we create in-home care service plans combining appropriate services such as home-visit care, home-visit long-term nursing care, and long-term care for outpatients upon request by the individual requiring care or the individual’s family. We also contact and coordinate with concerned organizations for the smooth provision of care services.

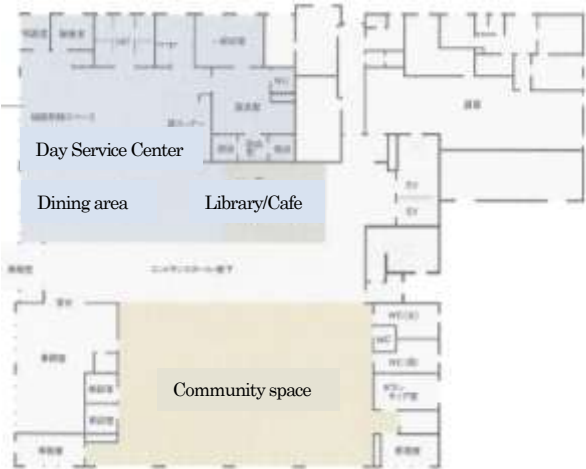
One of the largest welfare service complexes in Koto-ku Built on the former site of an elementary school

In 2005, Koto Ward Office invited the public to submit plans for Elderly Facility Development. The Koto Ward Office envisioned the construction of facilities for the elderly and other residents in the community on land formerly occupied by a public elementary school. Koto Ward Office selected a private-sector plan for a Long-term Care Health Facility, a Maternal and Child Living Support Facility, and an Intensive Care Home for the Elderly, which started offering services in March 2010.

Part of the land had been developed as a park and is used for regional community activities, including interaction among the elderly using the facilities, children and other residents in the community.

Floor Plan

1F

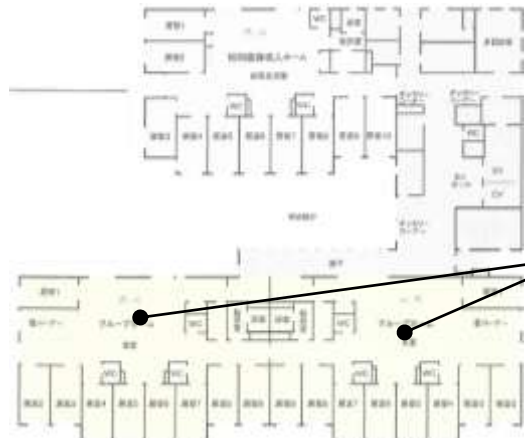


2-4F



- 2F Intensive Care Home for the Elderly
- 3-4F Short Stays
- 5F Intensive Care Home for the Elderly

5F



Group Home Dining area