

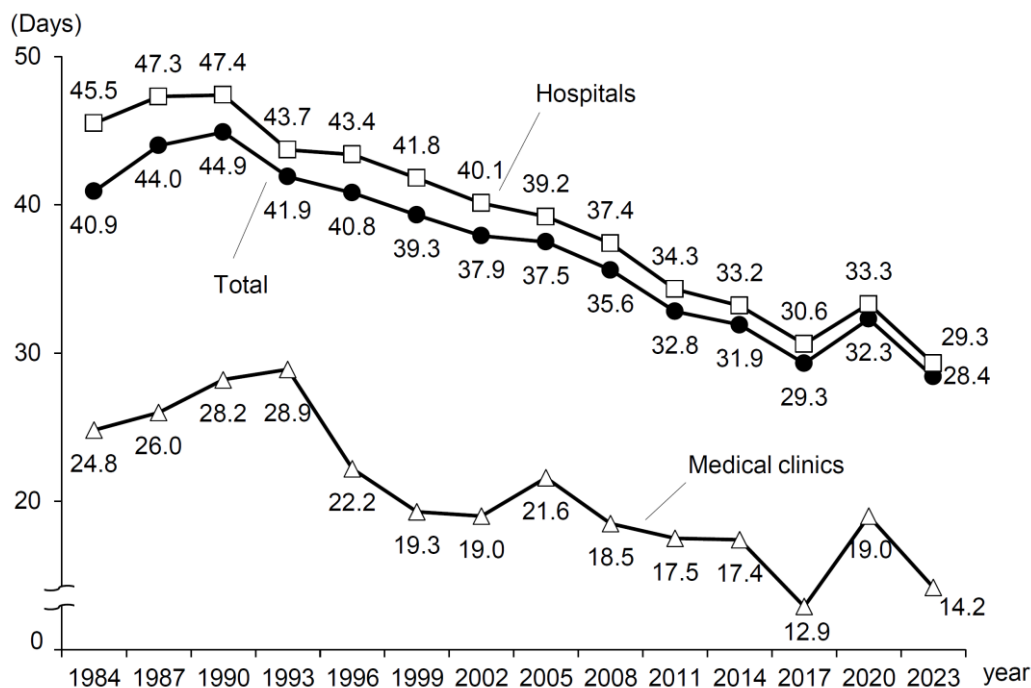
### 3 Average length of stay of discharged patients

#### (1) By type of medical institution and age group

Looking at the average length of stay of discharged patients nationwide in September 2023 by type of medical institution, it was 29.3 days for "hospitals" and 14.2 days for "medical clinics." (Figure 7, Statistics Table 6).

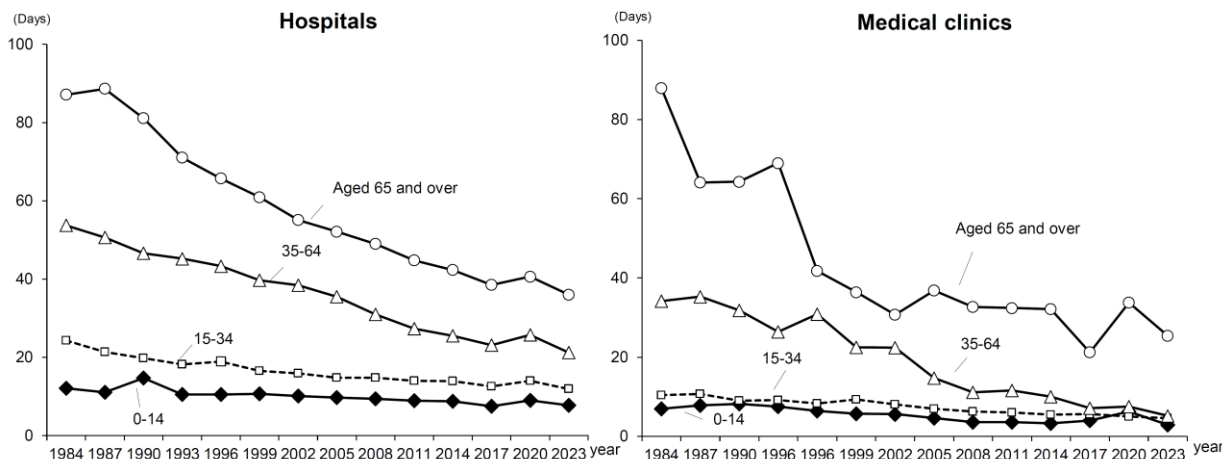
By age group, the average length of stay was the longest for those "aged 65 and older". (Figure 8, Statistics Table 6)

**Figure 7 Yearly Trend in the Average Length of Stay of Discharged Patients by Type of Medical Institution**



Notes: 1) Patients discharged in the period from September 1 to 30 of each year were surveyed.  
 2) Figures of 2011 exclude data of Fukushima Prefecture and the medical areas of Ishinomaki and Kesennuma in Miyagi Prefecture.  
 3) The average length of stay of discharged patients in the 2020 survey requires caution. See "8 Notes" (7) for details. (Page No. 3)

**Figure 8 Yearly Trend in the Average Length of Stay of Discharged Patients by Age Group**



Notes: 1) Patients discharged in the period from September 1 to 30 of each year were surveyed.  
 2) Figures of 2011 exclude data of Fukushima Prefecture and the medical areas of Ishinomaki and Kesennuma in Miyagi Prefecture.  
 3) The average length of stay of discharged patients in the 2020 survey requires caution. See "8 Notes" (7) for details. (Page No. 3)  
 4) For figures, see Statistics Table 6.

## (2) By classification of injury/disease

Looking at the average length of stay of discharged patients by classification of injury/disease, the longest length of stay was 290.4 for patients with "V Mental and behavioral disorders," followed by 93.3 days for patients with "VI Diseases of the nervous system," and 34.6 days for patients with "IX Diseases of the circulatory system" (Table 6, Statistics Table 7).

**Table 6 Average Length of Stay of Discharged Patients by Age Group and Classification of Injury/Disease**

(Unit: Day)

September 2023

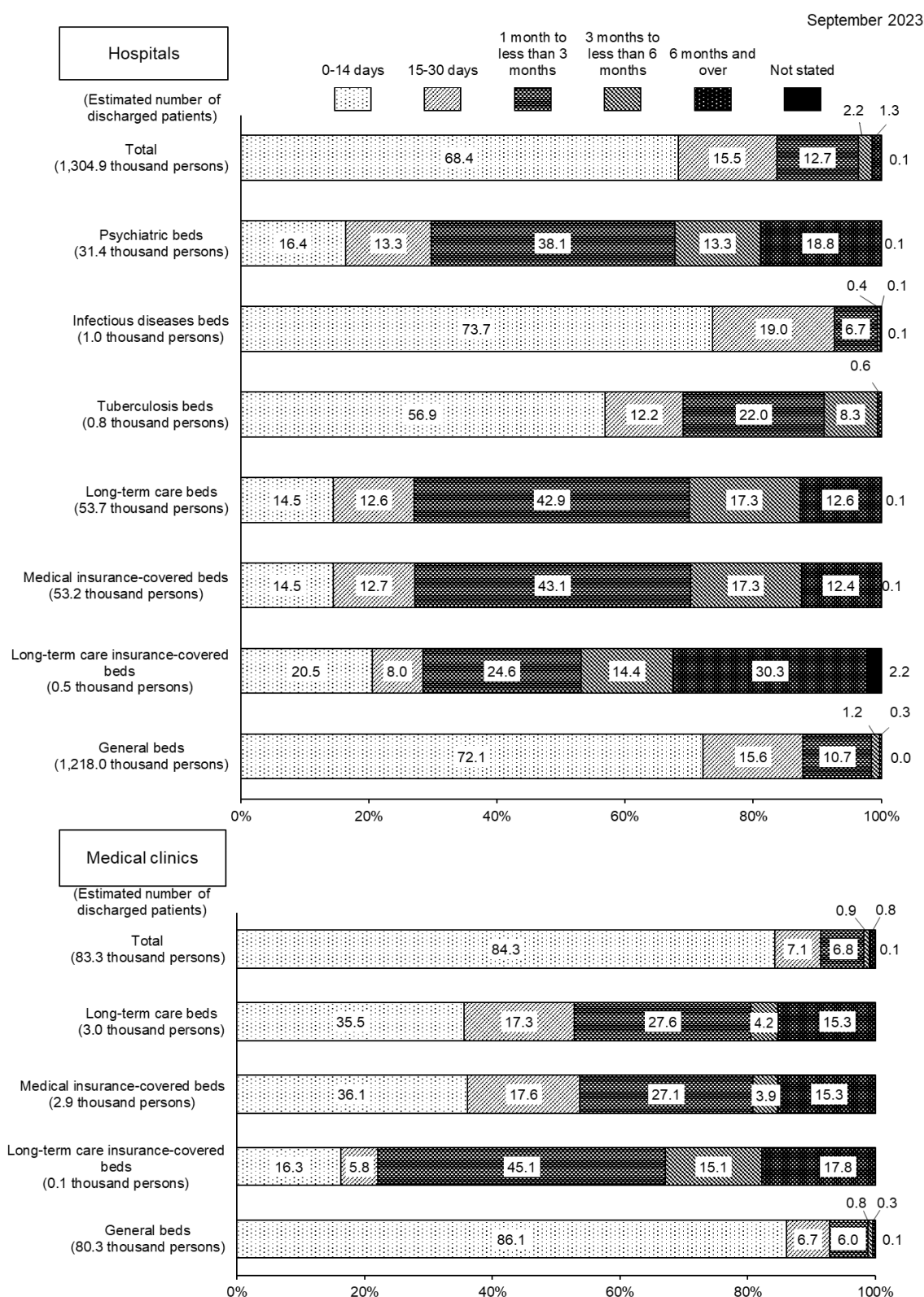
Classification of injury/disease	Total	0-14	15-34	35-64	Aged 65 and over	Aged 70 and over (Regrouped)	Aged 75 and over (Regrouped)
Total	28.4	7.6	10.5	20.2	35.5	36.7	39.0
I Certain infectious and parasitic diseases	25.1	4.4	6.4	17.4	36.0	37.9	41.4
Tuberculosis (Regrouped)	44.3	6.8	31.6	34.7	48.1	48.8	49.0
Viral hepatitis (Regrouped)	13.4	7.0	9.0	10.8	17.7	19.2	20.9
II Neoplasms (tumor)	13.4	12.4	9.0	9.7	15.1	15.7	17.1
Malignant neoplasms (tumor) (Regrouped)	14.4	19.0	14.0	10.7	15.5	16.2	17.6
Malignant neoplasm of stomach (tumor) (Regrouped)	14.7	16.8	8.8	10.3	15.6	16.4	17.4
Malignant neoplasm of colon and rectosigmoid junction and rectum (tumor) (Regrouped)	15.3	12.0	9.9	11.5	16.6	17.7	19.4
Malignant neoplasm of liver and intrahepatic bile ducts (tumor) (Regrouped)	13.6	8.2	11.8	10.2	14.2	14.8	16.1
Malignant neoplasm of trachea, bronchus and lung (tumor) (Regrouped)	14.1	7.5	11.1	10.6	14.9	14.8	16.2
Malignant neoplasm of breast (tumor) (Regrouped)	9.4	2.3	6.5	7.2	12.1	13.3	15.6
III Diseases of the blood and blood-forming organs and certain disorders involving the immune mechanism	18.1	8.0	9.2	12.9	21.6	22.0	22.1
IV Endocrine, nutritional and metabolic diseases	24.7	4.7	8.8	14.2	30.8	31.9	34.1
Diabetes mellitus (Regrouped)	31.8	10.8	11.1	13.8	44.3	48.4	56.8
Dyslipidemia (Regrouped)	21.3	5.0	11.7	4.4	32.0	37.9	43.3
V Mental and behavioral disorders	290.4	42.8	58.5	187.1	511.3	525.8	507.6
Vascular and unspecified dementia (Regrouped)	285.2	-	37.0	154.2	288.7	288.6	279.1
Schizophrenia, schizotypal and delusional disorders (Regrouped)	569.5	31.1	97.1	281.0	1 205.6	1 382.3	1 530.1
Mood [affective] disorders (including bipolar affective disorder) (Regrouped)	118.2	53.6	37.4	85.3	184.3	187.8	203.2
VI Diseases of the nervous system	93.3	13.7	34.3	50.6	131.1	137.1	151.6
Alzheimer disease (Regrouped)	279.6	-	364.4	143.7	281.6	281.3	285.3
VII Diseases of the eye and adnexa	3.2	3.9	4.2	3.6	3.1	3.0	3.2
VIII Diseases of the ear and mastoid process	5.4	3.2	4.9	4.9	6.2	6.4	6.9
IX Diseases of the circulatory system	34.6	9.6	12.8	20.4	38.6	40.2	43.1
Hypertensive diseases (Regrouped)	41.6	3.6	7.5	20.3	45.0	46.3	47.4
Heart diseases (excluding hypertensive) (Regrouped)	18.3	13.0	8.5	8.3	20.9	22.0	24.9
Cerebrovascular diseases (Regrouped)	68.9	11.8	31.4	44.5	75.5	77.7	80.1
X Diseases of the respiratory system	26.6	5.2	6.9	14.0	34.9	35.6	37.0
Pneumonia (Regrouped)	26.0	5.1	8.9	14.7	30.1	30.5	31.6
Chronic obstructive pulmonary disease (Regrouped)	49.8	20.6	12.4	19.4	52.2	53.2	54.7
Asthma (Regrouped)	8.2	4.8	7.6	7.9	18.9	20.0	21.5
XI Diseases of the digestive system	10.3	4.7	5.6	6.8	13.0	14.0	15.2
Dental caries (Regrouped)	1.1	0.7	0.8	1.5	2.0	1.9	2.0
Gingivitis and periodontal diseases (Regrouped)	1.8	1.5	1.5	1.7	2.8	2.8	3.1
Diseases of liver (Regrouped)	22.3	12.2	10.0	17.8	25.9	28.1	27.7
XII Diseases of the skin and subcutaneous tissue	26.9	5.9	7.8	15.9	35.7	37.3	39.1
XIII Diseases of the musculoskeletal system and connective tissue	29.6	9.2	10.1	17.6	35.6	37.7	41.5
XIV Diseases of the genitourinary system	22.3	7.5	4.1	9.4	30.4	32.1	35.0
Chronic kidney diseases (Regrouped)	57.3	12.1	13.0	25.8	66.5	70.5	77.9
XV Pregnancy, childbirth and the puerperium	7.4	10.5	6.5	8.6	-	-	-
XVI Certain conditions originating in the perinatal period	11.1	10.8	531.8	-	-	-	-
XVII Congenital malformations, deformations and chromosomal abnormalities	21.1	11.2	33.4	66.8	27.9	28.2	25.6
XVIII Symptoms, signs and abnormal clinical and laboratory findings, not elsewhere classified	28.2	4.6	5.9	14.2	38.8	39.4	41.0
XIX Injury, poisoning and certain other consequences of external causes	29.4	2.6	8.6	18.1	38.0	39.1	40.9
Fracture (Regrouped)	35.4	3.7	9.0	19.1	42.0	43.3	45.2
XXI Factors influencing health status and contact with health services	9.1	4.0	5.3	6.4	19.7	21.4	25.2
XXII Codes for special purposes	18.5	3.7	5.7	23.8	18.9	18.9	19.4

Notes: 1) Patients discharged in the period from September 1 to 30, 2023 were surveyed.  
2) Total includes patients of unknown age.

### (3) Percentage distribution of the estimated number of discharged patients

Looking at the percentage distribution of the estimated number of discharged patients by length of stay, in hospitals "0 to 14 days" accounted for 68.4% and "15 to 30 days" accounted for 15.5%, while in medical clinics "0 to 14 days" accounted for 84.3% and "15 to 30 days" accounted for 7.1% (Figure 9).

**Figure 9 Percentage Distribution of the Estimated Number of Discharged Patients by Length of Stay and Type of Bed**



Notes: 1) Patients discharged in the period from September 1 to 30, 2023 were surveyed.  
2) The types of beds are those at the time of discharge.