

## 2 Estimated rate of patients (per day, per 100,000 population)

The estimated rate of patients (per day, per 100,000 population) nationwide was 945 for "inpatients" and 5,850 for "outpatients."

### (1) By sex and age group

The estimated rate of patients by sex was 893 for "males" and 995 for "females" for inpatients, and 5,118 for "males" and 6,544 for "females" for outpatients. By age group, the rate was 2,449 for "65 and over", 2,787 or "70 and over", and 3,351 for "75 and over" for inpatients, and 10,208 for "65 and over", 10,742 for "70 and over", and 11,333 for "75 and over" for outpatients. (Table 4, Statistics Table 4).

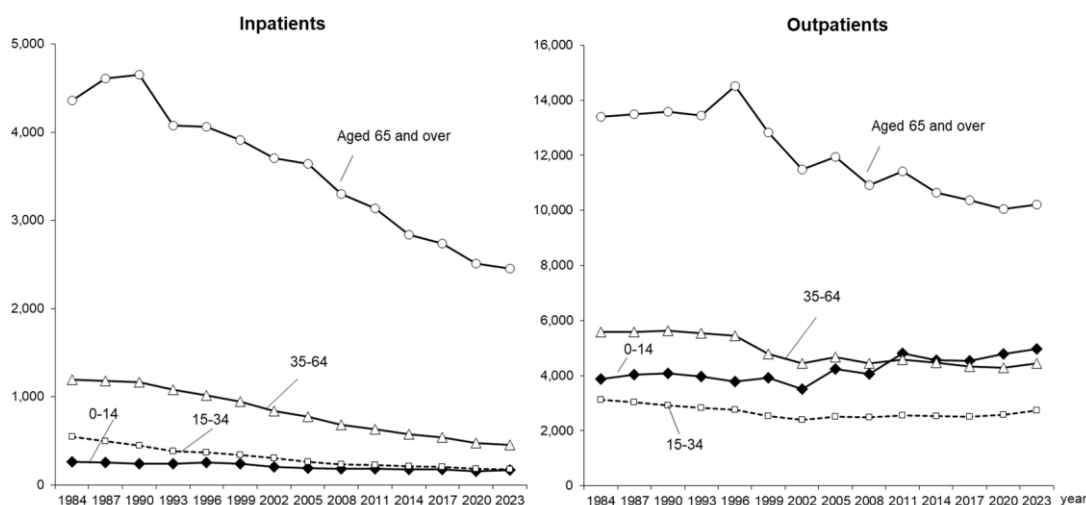
By age group, the estimated rate of patients (per day, per 100,000 population) was the highest in the "65 and over" age group for both inpatients and outpatients. The rate for outpatients was the highest in the "0-14" age group, and the rate in 2023 was the highest since 1984 (Figure 5, Statistics Table 4)

**Table 4 Estimated Rate of Patients (per day, per 100,000 population) by Sex and Age Group**

Age group	Inpatients			Outpatients		
	Total	Male	Female	Total	Male	Female
Total	945	893	995	5 850	5 118	6 544
Age 0	1 237	1 275	1 197	6 467	6 642	6 284
1~4	153	165	141	6 291	6 548	6 021
5~9	86	96	77	5 196	5 404	4 976
10~14	87	89	85	3 680	3 879	3 472
15~19	115	113	118	2 459	2 279	2 650
20~24	137	123	152	2 367	1 783	2 987
25~29	182	127	241	2 837	1 893	3 836
30~34	239	158	324	3 201	2 177	4 281
35~39	242	192	294	3 353	2 360	4 386
40~44	258	260	256	3 501	2 668	4 358
45~49	318	335	300	3 912	3 108	4 739
50~54	441	489	392	4 395	3 510	5 296
55~59	613	698	528	5 171	4 482	5 860
60~64	838	983	695	6 320	5 571	7 055
65~69	1 117	1 320	924	8 108	7 799	8 401
70~74	1 502	1 770	1 263	9 395	9 163	9 603
75~79	2 033	2 315	1 803	11 197	10 919	11 428
80~84	2 952	3 153	2 808	12 010	11 823	12 144
85~89	4 413	4 589	4 312	11 483	11 740	11 336
Aged 90 and over	6 275	6 441	6 216	10 021	10 475	9 860
(Regrouped)						
Aged 65 and over	2 449	2 473	2 431	10 208	9 943	10 412
Aged 70 and over	2 787	2 812	2 769	10 742	10 572	10 864
Aged 75 and over	3 351	3 354	3 349	11 333	11 306	11 350

Note: Total includes patients of unknown age.

**Figure 5 Yearly Trend in the Estimated Rate of Patients (per day, per 100,000 population) by Age Group**



Notes: 1) Figures of 2011 exclude data of Fukushima Prefecture and the medical areas of Ishinomaki and Kesennuma in Miyagi Prefecture.  
2) For figures, see Statistics Table 4.

## (2) By classification of injury/disease

By classification of injury/disease, the highest rate for inpatients was "V Mental and behavioral disorders" (171), followed by "IX Diseases of the circulatory system" (147), and "X IX Injury, poisoning and certain other consequences of external causes" (107). Regarding the estimated number of outpatients, the most common categories, ranked highest to lowest, are: "XI Diseases of the digestive system" (994), "XXI Factors influencing health status and contact with health services" (803) and "IX Diseases of the circulatory system" (677). (Table 5, Statistics Table 5)

**Table 5 Estimated Rate of Patients (per 100,000 population) by Classification of Injury/Disease**

October 2023

Classification of injury/disease		Inpatients			Outpatients		
		Total	Male	Female	Total	Male	Female
Total		945	893	995	5 850	5 118	6 544
I	Certain infectious and parasitic diseases	13	13	13	119	114	124
	Tuberculosis (Regrouped)	1	1	1	1	1	1
	Viral hepatitis (Regrouped)	0	0	0	8	7	8
II	Neoplasms (tumor)	96	109	82	208	192	223
	Malignant neoplasms (tumor) (Regrouped)	85	101	71	150	158	142
	Malignant neoplasm of stomach (tumor) (Regrouped)	7	10	4	12	17	9
	Malignant neoplasm of colon and rectosigmoid junction and rectum (tumor) (Regrouped)	13	14	11	23	25	20
	Malignant neoplasm of liver and intrahepatic bile ducts (tumor) (Regrouped)	3	5	2	3	5	2
	Malignant neoplasm of trachea, bronchus and lung (tumor) (Regrouped)	12	16	7	15	19	12
	Malignant neoplasm of breast (tumor) (Regrouped)	4	0	8	27	1	51
III	Diseases of the blood and blood-forming organs and certain disorders involving the immune mechanism	5	4	5	16	10	23
IV	Endocrine, nutritional and metabolic diseases	23	21	26	348	319	375
	Diabetes mellitus (Regrouped)	10	10	10	165	191	141
	Dyslipidemia (Regrouped)	0	0	0	130	85	173
V	Mental and behavioral disorders	171	164	178	197	182	211
	Vascular and unspecified dementia (Regrouped)	18	16	21	11	5	17
	Schizophrenia, schizotypal and delusional disorders (Regrouped)	102	97	106	40	41	39
	Mood [affective] disorders (including bipolar affective disorder) (Regrouped)	21	15	27	62	50	73
VI	Diseases of the nervous system	99	88	110	130	109	150
	Alzheimer disease (Regrouped)	42	31	53	35	18	52
VII	Diseases of the eye and adnexa	8	8	9	268	210	323
VIII	Diseases of the ear and mastoid process	2	1	2	65	54	76
IX	Diseases of the circulatory system	147	142	151	677	644	708
	Hypertensive diseases (Regrouped)	3	2	5	488	437	535
	Heart diseases (excluding hypertensive) (Regrouped)	46	44	48	112	125	99
	Cerebrovascular diseases (Regrouped)	88	86	90	60	65	56
X	Diseases of the respiratory system	67	77	58	503	490	515
	Pneumonia (Regrouped)	21	23	19	4	4	3
	Chronic obstructive pulmonary disease (Regrouped)	5	6	3	13	18	8
	Asthma (Regrouped)	2	1	2	79	71	86
XI	Diseases of the digestive system	48	52	45	994	848	1 132
	Dental caries (Regrouped)	0	0	0	179	166	192
	Gingivitis and periodontal diseases (Regrouped)	0	0	0	443	350	531
	Diseases of liver (Regrouped)	4	5	4	19	19	18
XII	Diseases of the skin and subcutaneous tissue	10	9	11	253	219	284
XIII	Diseases of the musculoskeletal system and connective tissue	59	47	70	647	496	791
XIV	Diseases of the genitourinary system	41	41	41	271	254	287
	Chronic kidney diseases (Regrouped)	18	21	15	104	142	67
XV	Pregnancy, childbirth and the puerperium	11	.	22	10	.	19
XVI	Certain conditions originating in the perinatal period	5	6	5	3	3	2
XVII	Congenital malformations, deformations and chromosomal abnormalities	4	5	4	13	13	14
XVIII	Symptoms, signs and abnormal clinical and laboratory findings, not elsewhere classified	12	9	14	75	60	88
XIX	Injury, poisoning and certain other consequences of external causes	107	81	132	227	225	228
	Fracture (Regrouped)	77	45	108	79	63	94
XXI	Factors influencing health status and contact with health services	5	4	6	803	652	947
XXII	Codes for special purposes	12	13	11	24	25	23

### (3) By prefecture

By prefecture (place of residence of patient), the highest rate for inpatients was "Kochi" at 1,785, followed by "Kagoshima" at 1,743, and "Nagasaki" at 1,651. "Kanagawa" had the lowest rate at 665, followed by "Tokyo" at 671, and "Saitama" at 702.

As for the outpatients, "Wakayama" had the highest rate at 6,846, followed by "Kagawa" at 6,807, and "Ehime" at 6,598. "Okinawa" had the lowest rate at 4,528, followed by "Kyoto" at 4,867, and "Shiga" at 5,144. (Figure 6)

**Figure 6 Estimated Rate of Patients (per day, per 100,000 population) by Prefecture (Place of Residence of Patient)**

