

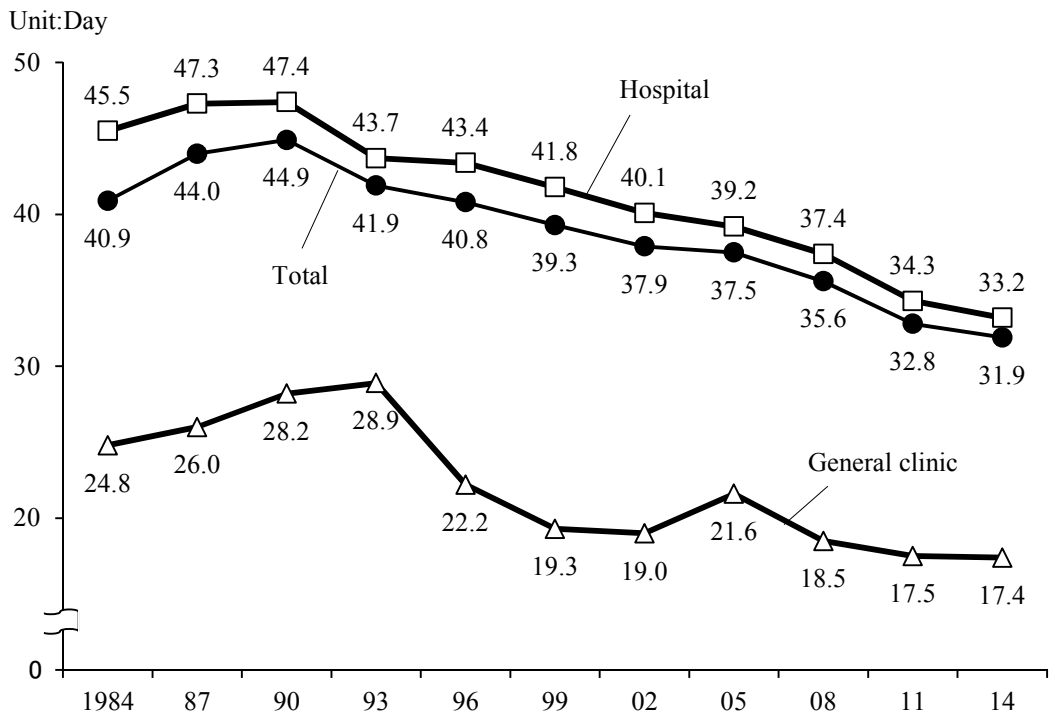
3 Average length of stay for Estimated Discharged Patients (per month)

(1) Average length of stay for estimated discharged patients by type of medical institution and age group

Looking at the average length of stay of estimated patients discharged in September 2014 by type of medical institution, it is becoming shorter for both hospitals and medical clinics with 33.2 days for "hospitals" and 17.4 days for "medical clinics". (Figure 7).

When this result is viewed by age group, the average length of stay becomes longer as age group becomes older (Figure 8).

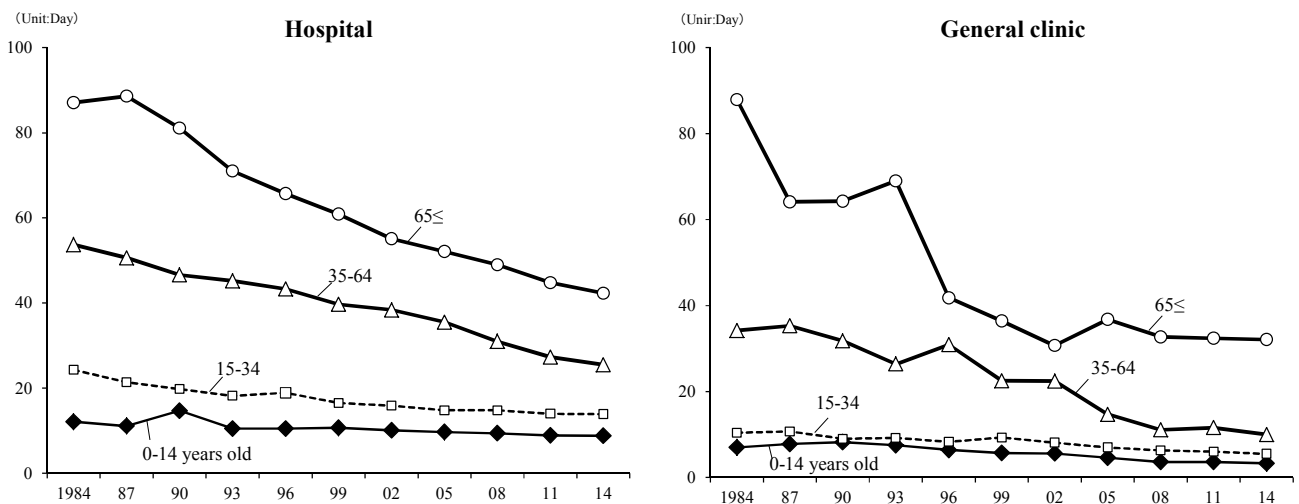
Figure7 Yearly Trend in the Average Length of Stay for Discharged Patients By Medical Care Institution



Note:1) Patients discharged in the period from 1st Sep to 30th Sep each year are surveyed.

2) Figures of 2011 exclude data of Ishinomaki medical area and Kesennuma medical area of Miyagi Prefecture, and Fukushima Prefecture.

Figure 8 Yearly Trend in the Average Length of Stay for Discharged Patients by Age Group



Note:1) Patients discharged in the period from 1st Sep to 30th Sep each year are surveyed.

2) Figures of 2011 exclude data of Ishinomaki medical area and Kesennuma medical area of Miyagi Prefecture, and Fukushima Prefecture.

(2) Average length of stay for estimated discharged patient by Classification of Diseases

When the average length of stay of discharged patient is viewed by classification of diseases, the order from the longest length of stay is 291.9 days in patients with “V Mental and behavioural disorders”, 82.2 days in patients with “VI Diseases of the nervous system”, and 43.3 days in patients with “IX Diseases of the circulatory system” (Table 6).

Table 6 Average Length of Stay for Estimated Discharged Patients by Age Group and Classification of Diseases

(Unit: Day)

Sep 2014

Classification of diseases		Total	0 - 14 years old	15 - 34	35 - 64	65 ≤	75 ≤ (Among them)
Total		31.9	8.4	12.0	24.4	41.7	47.6
I	Certain infectious and parasitic diseases	20.9	4.6	7.1	18.3	31.5	37.1
	Tuberculosis (Among them)	58.7	32.8	40.7	65.2	58.4	58.6
	Viral hepatitis (Among them)	16.3	5.1	12.5	12.5	21.4	38.2
II	Neoplasms	18.7	19.8	14.0	14.0	21.1	25.3
	Malignant neoplasm (Among them)	19.9	32.1	18.6	15.4	21.7	26.1
	Malignant neoplasm of stomach (Among them)	19.3	5.5	12.1	13.9	21.0	25.7
	Malignant neoplasm of colon and rectosigmoid junction and return (Among them)	18.0	8.0	10.8	13.5	20.0	24.5
	Malignant neoplasm of liver and intrahepatic bile ducts (Among them)	18.8	47.8	12.1	15.8	19.3	21.6
	Malignant neoplasm of trachea, bronchus and lung (Among them)	20.9	10.1	9.8	16.7	22.3	26.9
	Malignant neoplasm of breast (Among them)	12.5	-	6.8	8.9	15.9	19.8
III	Diseases of the blood and blood-forming organs and certain disorders involving the immune mechanism	21.8	10.4	10.7	19.8	26.0	27.3
IV	Endocrine, nutritional and metabolic diseases	28.5	5.4	12.4	19.0	36.3	43.1
	Diabetes mellitus (Among them)	35.5	13.0	14.1	20.0	47.4	65.2
	Disorders of lipoprotein metabolism (Among them)	29.4	1.0	4.5	7.4	62.3	83.8
V	Mental and behavioural disorders	291.9	36.2	60.1	204.4	523.0	473.0
	Vascular and unspecified dementia (Among them)	376.5	-	231.0	267.5	380.7	383.1
	Schizophrenia, schizotypal and delusional disorders (Among them)	546.1	91.4	93.3	334.1	1 295.8	1 470.9
	Mood [affective] disorders (incl. bipolar affective disorder) (Among them)	113.4	41.1	45.7	93.7	157.0	161.3
VI	Diseases of the nervous system	82.2	15.7	44.7	51.8	113.2	134.9
	Alzheimer disease (Among them)	266.3	-	-	217.8	267.4	257.6
VII	Diseases of the eye and adnexa	4.1	3.8	6.6	4.6	3.9	4.1
VIII	Diseases of the ear and mastoid process	7.8	4.6	6.8	8.3	8.1	8.1
IX	Diseases of the circulatory system	43.3	18.2	13.6	21.4	50.6	62.7
	Hypertensive diseases (Among them)	60.5	8.9	11.0	13.8	68.4	83.3
	Heart diseases (excluding hypertensive) (Among them)	20.3	30.5	10.2	9.0	23.7	30.5
	Cerebrovascular diseases (Among them)	89.5	20.7	44.6	46.9	100.7	116.0
X	Diseases of the respiratory system	27.3	5.3	10.4	15.2	39.0	41.7
	Pneumonia (Among them)	29.7	6.1	9.2	16.2	36.0	38.4
	Chronic obstructive pulmonary disease (Among them)	68.1	9.9	9.4	25.1	72.4	80.4
	Asthma (Among them)	10.8	4.9	5.9	8.4	29.0	35.1
X I	Diseases of the digestive system	13.0	5.6	7.5	9.7	16.0	19.3
	Dental caries (Among them)	1.6	0.4	1.1	2.4	4.5	5.2
	Gingivitis and periodontal diseases (Among them)	2.1	0.4	1.8	3.3	3.3	3.5
	Diseases of liver (Among them)	25.8	9.3	10.7	17.1	33.2	40.7
X II	Diseases of the skin and subcutaneous tissue	22.7	5.9	9.7	16.2	29.6	32.8
X III	Diseases of the musculoskeletal system and connective tissue	31.1	11.1	13.7	20.9	38.1	45.2
X IV	Diseases of the genitourinary system	23.6	9.4	5.9	12.4	32.4	37.8
	Chronic renal failure (Among them)	62.9	46.8	15.9	35.0	72.0	88.1
X V	Pregnancy, childbirth and the puerperium	7.9	5.0	7.4	9.3	-	-
X VI	Certain conditions originating in the perinatal period	10.9	10.9	44.9	29.0	-	-
X VII	Congenital malformations, deformations and chromosomal abnormalities	15.5	14.0	15.8	17.6	29.2	43.5
X VIII	Symptoms, signs and abnormal clinical and laboratory findings, not elsewhere classified	23.7	3.6	7.7	11.4	33.0	37.2
X IX	Injury, poisoning and certain other consequences of external causes	31.7	5.1	13.7	20.5	42.8	47.7
	Fracture (Among them)	37.9	5.3	14.4	21.9	47.7	51.9
X X I	Factors influencing health status and contact with health services	9.9	5.3	5.4	5.6	20.5	24.4

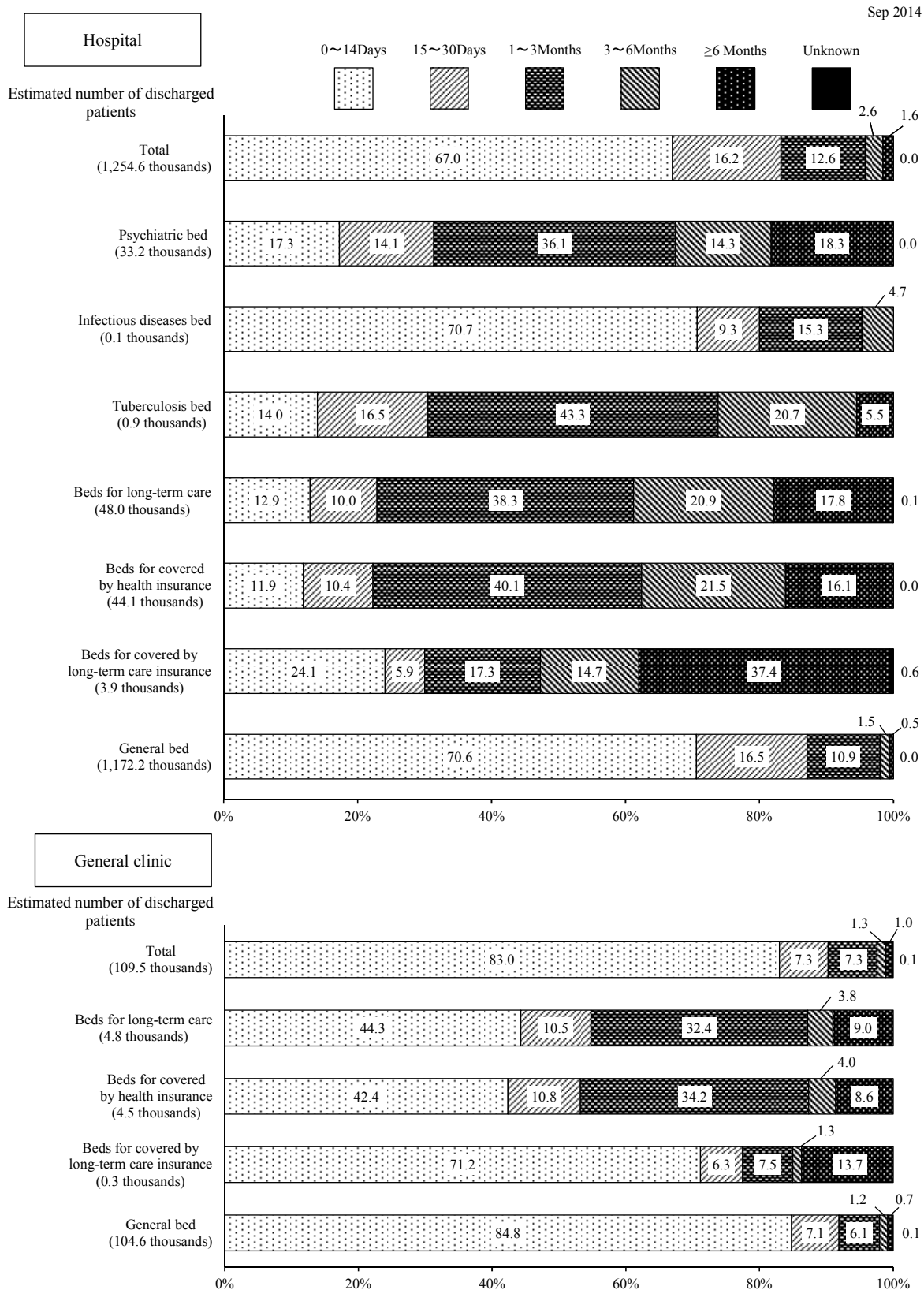
Note: 1) Patients discharged in the period from 1st Sep to 30th Sep 2014 are surveyed.

2) Total includes patients of unknown age.

(3) Percentage distribution of estimated number of discharged patients

Looking at the percentage distribution of estimated number of discharged patients by length of stay, in hospitals "0 to 14 days" accounted for 67.0% and "15 to 30 days" was 16.2%, while in clinics "0 to 14 days" accounted for 83.0% and both "15 to 30 days" and "1 to 3 days" was 7.3%. (Figure 9)

Figure 9 Percentages by Length of Stay in Estimated Number of Discharged Patients by Type of Bed



Note: 1) Patients discharged in the period from 1st Sep to 30th Sep 2014 are surveyed.

2) Type of beds is at the time of discharge.