

Survey of Medical Care Activities in Public Health Insurance 2009

Digest of Summary Report

【Points of survey results】

- Inpatient care in medical institutions (Table 1, Figure 1)
Points per detailed statement: 43,608.5 points (up 2.8% y/y); points per day: 2,582.7 points (up 1.8% y/y)
- Outpatient care in medical institutions (Table 2, Figure 2)
Points per detailed statement: 1,249.0 points (down 9.3% y/y); points per day: 729.9 points (down 3.9% y/y)
- Medical care in dental care institutions (Table 3, Figure 3)
Points per detailed statement: 1,293.4 points (up 0.6% y/y); points per day: 615.9 points (up 1.4% y/y)
- Ratios of drug fees in medical institutions (including pharmacy dispensing) (Figure 4)
Total: 33.2% (up 4.2 points y/y)
Inpatients: 10.8 % (down 0.3 points y/y) Outpatients: 40.3% (up 4.1% y/y)
- Percentage of number of generic brands in the number of all brands (Table 4)
Total: 20.7% (up 0.2 point y/y); inpatients: 19.4% (up 2.1 points y/y)
In-hospital prescription (outpatients/administrations): 26.0% (up 1.0 y/y)
Non-hospital prescription (pharmacy dispensing): 18.4% (up 0.1 point y/y)

1. Objective

This survey aims to reveal the situation of medical treatment, diseases and injuries, dispensing, and use of drugs in recipients of health insurance managed by the Japan Health Insurance Association (hereinafter called association insurance), society-managed employment-based health insurance (hereinafter called social insurance), national health insurance (hereinafter called NHI), and the long-life medical care system, and to obtain basic data needed for administration of medical insurance.

2. Survey Scope

The subjects surveyed were detailed statements of medical/dental fees and pharmacy dispensing fees (hereinafter called detailed statements), assessed and accepted as applicable for association insurance, social insurance, NHI, and the long-life medical care system by prefectural branches of the Social Insurance Medical Fee Payment Fund (hereinafter called Payment Fund Branch) and the Federation of National Health Insurance (hereinafter called National Insurance Federation).

The objects were detailed statements selected from stratified random two-stage sampling with insurance-covered medical care institutions and pharmacies as the primary sampling unit, and detailed statements as the secondary sampling unit.

	Number of medical institutions	Number of detailed statements		
		Total	General medical care	Latter stage medical care

Medical institutions	11,133	359,489	221,272	138,217
Hospitals	1,409	115,447	78,299	37,148
Clinics	9,724	244,042	142,973	101,069
Dental care institutions	1,004	28,391	18,175	10,216
Pharmacies	4,816	77,121	47,037	30,084

3. Survey Period

Detailed statements assessed in June 2009.

4. Survey Items

Detailed Statements of Medical/Dental Fees Age, diagnostic names, actual number of days for treatment, points and times of medical treatment by type of medical practice, and use of drugs (name and dose of drugs), etc.

Detailed Statements of Pharmacy Dispensing Fees Age, number of prescriptions, points and times by type of dispensing, use of drugs (name and dose of drugs), etc.

5. Method

The Payment Fund Branch and National Insurance Federation selected detailed statements from medical care institutions and pharmacies covered by insurance using a separate extraction rate, and sent copies of the selected detailed statements to the Statistics and Information Department, Minister's Secretariat, Ministry of Health, Labour and Welfare.

6. Major survey results

○Medical treatment of inpatients and outpatients in medical institutions

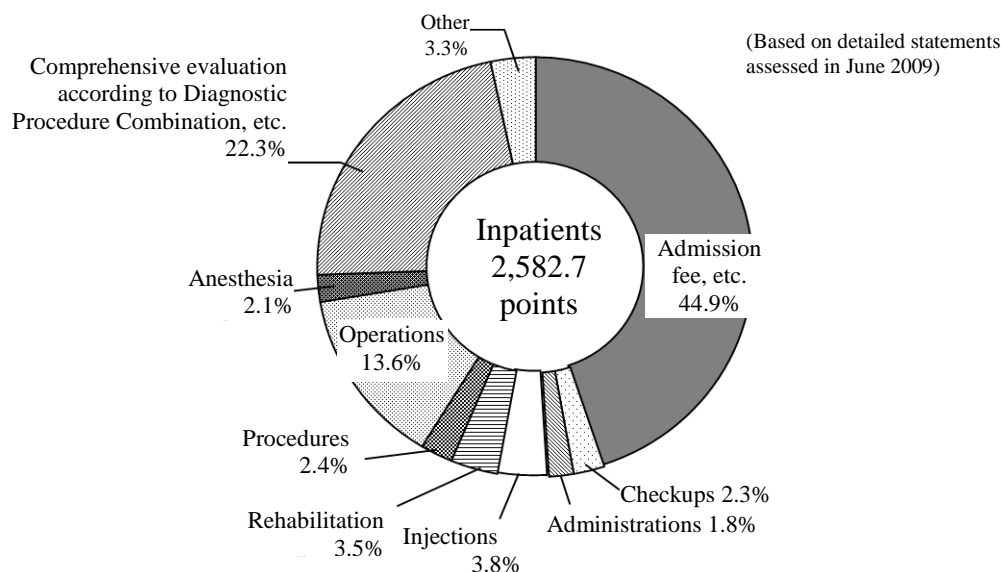
Table 1 Number of inpatient care points by type of medical practice per detailed statement, per day and number of days of treatment per detailed statement

(Based on detailed statements assessed in June each year)

Medical practice	Points per detailed statement				Points per day			
	2009	2008	Year-to-year		2009	2008	Year-to-year	
			Increase-decrease of points	Increase-decrease rate (%)			Increase-decrease of points	Increase-decrease rate (%)
Total	43,608.5	42,402.3	1,206.2	2.8	2,582.7	2,537.0	45.7	1.8
First and follow-up examinations	43.0	44.2	△ 1.3	△ 2.9	2.5	2.6	△ 0.1	△ 3.8
Medical management, etc.	332.4	343.6	△ 11.2	△ 3.3	19.7	20.6	△ 0.9	△ 4.2
Home care	72.6	61.3	11.3	18.5	4.3	3.7	0.6	17.3
Checkups	998.1	1,288.7	△ 290.7	△ 22.6	59.1	77.1	△ 18.0	△ 23.3
Diagnostic imaging	580.1	848.2	△ 268.1	△ 31.6	34.4	50.7	△ 16.4	△ 32.3
Administrations	789.9	804.5	△ 14.6	△ 1.8	46.8	48.1	△ 1.4	△ 2.8
Injections	1,637.8	2,090.3	△ 452.5	△ 21.6	97.0	125.1	△ 28.1	△ 22.4
Rehabilitation	1,524.9	1,401.1	123.8	8.8	90.3	83.8	6.5	7.7
Psychiatric treatment	215.5	228.9	△ 13.5	△ 5.9	12.8	13.7	△ 0.9	△ 6.8
Procedures	1,041.3	1,131.4	△ 90.0	△ 8.0	61.7	67.7	△ 6.0	△ 8.9
Operations	5,948.0	6,031.0	△ 83.0	△ 1.4	352.3	360.8	△ 8.6	△ 2.4
Anesthesia	911.5	904.4	7.1	0.8	54.0	54.1	△ 0.1	△ 0.2
Radiation treatment	124.8	92.5	32.3	35.0	7.4	5.5	1.9	33.6
Pathological diagnoses	78.4	99.8	△ 21.4	△ 21.5	4.6	6.0	△ 1.3	△ 22.3
Admission fees, etc.	19,599.3	21,032.8	△ 1,433.5	△ 6.8	1,160.8	1,258.4	△ 97.7	△ 7.8
Comprehensive evaluation according to Diagnostic Procedure Combination, etc.	9,710.9	5,999.3	3,711.7	61.9	575.1	359.0	216.2	60.2
(Number of days per detailed statement)	(16.88)	(16.71)						

Note: "Total" does not include "inpatient care-related food and living costs, etc."

Figure 1 Composition of inpatient care points by type of medical practice per day



Note: "Other" refers to "first and follow-up examinations," "medical management," "home care," "diagnostic imaging," "psychiatric treatment," "radiation treatment," and "pathological diagnoses".

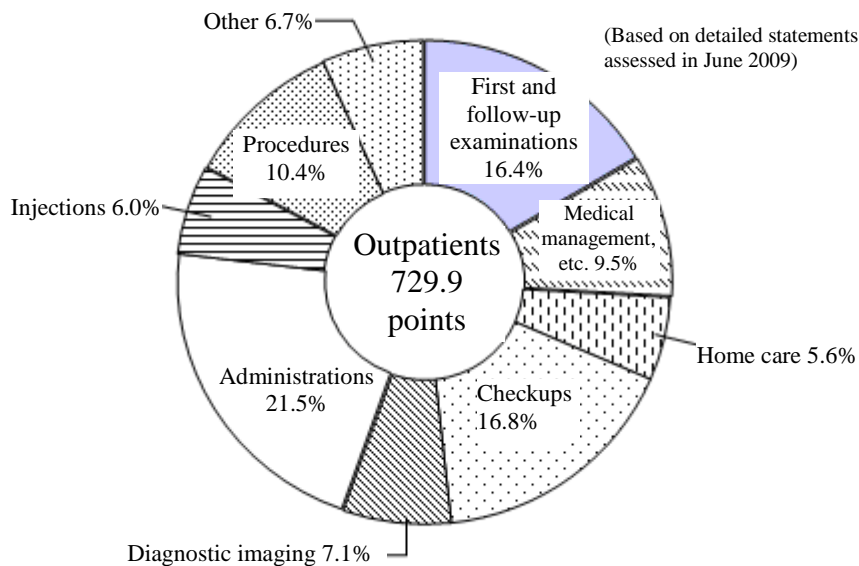
Table 2 Outpatient care points by type of medical practice per detailed statement, per day and number of days of treatment per detailed statement

(Based on detailed statements assessed in June each year)

Medical practice	Points per detailed statement				Points per day			
	2009	2008	Year-to-year		2009	2008	Year-to-year	
			Increase-decrease of points	Increase-decrease rate (%)			Increase-decrease of points	Increase-decrease rate (%)
Total	1,249.0	1,376.7	Δ 127.7	Δ 9.3	729.9	759.9	Δ 30.0	Δ 3.9
First and follow-up examinations	205.2	215.5	Δ 10.3	Δ 4.8	119.9	119.0	1.0	0.8
Medical management, etc.	118.4	121.9	Δ 3.5	Δ 2.9	69.2	67.3	1.9	2.8
Home care	69.7	65.3	4.4	6.8	40.8	36.1	4.7	13.1
Checkups	209.8	198.9	10.9	5.5	122.6	109.8	12.8	11.7
Diagnostic imaging	88.7	90.8	Δ 2.1	Δ 2.3	51.9	50.1	1.7	3.4
Administrations	268.5	263.9	4.6	1.7	156.9	145.7	11.2	7.7
Injections	74.9	72.3	2.5	3.5	43.8	39.9	3.8	9.6
Rehabilitation	11.7	12.1	Δ 0.4	Δ 3.0	6.8	6.7	0.2	2.6
Psychiatric treatment	26.3	30.3	Δ 4.0	Δ 13.1	15.4	16.7	Δ 1.3	Δ 8.0
Procedures	130.2	256.6	Δ 126.4	Δ 49.3	76.1	141.6	Δ 65.6	Δ 46.3
Operations	28.2	29.5	Δ 1.3	Δ 4.5	16.5	16.3	0.2	1.1
Anesthesia	5.8	7.1	Δ 1.3	Δ 18.9	3.4	3.9	Δ 0.6	Δ 14.1
Radiation treatment	3.1	4.1	Δ 1.0	Δ 24.5	1.8	2.3	Δ 0.5	Δ 20.1
Pathological diagnoses	8.3	8.0	0.4	4.8	4.9	4.4	0.5	10.9
(Number of days per detailed statement)	(1.71)	(1.81)						

Note: "Total" includes "Admission fees, etc. (Short-stay surgery basic fee 1)."

Figure 2 Composition of outpatient care points by type of medical practice per day



Note: "Other" refers to "rehabilitation," "psychiatric treatment," "operation," "anesthesia," "radiation treatment," "pathological diagnoses," and "admission fee, etc."

○Medical treatment in dental care institutions

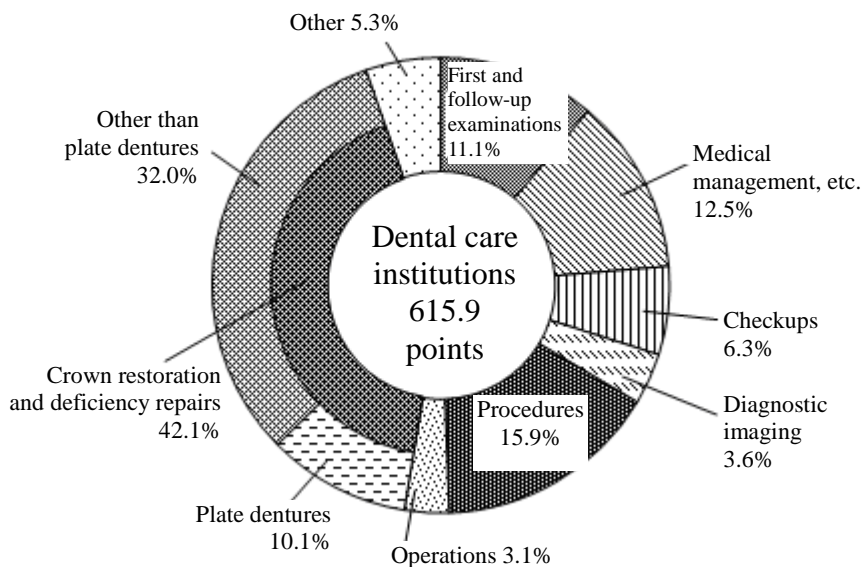
Table 3 Points by type of medical practice per detailed statement, per day and number of days of treatment per detailed statement

(Based on detailed statements assessed in June each year)

Medical practice	Points per detailed statement				Points per day			
	2009	2008	Year-to-year		2009	2008	Year-to-year	
			Increase-decrease of points	Increase-decrease rate (%)			Increase-decrease of points	Increase-decrease rate (%)
Total	1,293.4	1,285.5	7.9	0.6	615.9	607.4	8.5	1.4
First and follow-up examinations	144.0	149.2	△ 5.2	△ 3.5	68.6	70.5	△ 1.9	△ 2.7
Medical management, etc.	162.0	158.6	3.4	2.2	77.1	74.9	2.2	2.9
Home care	27.3	11.2	16.1	143.6	13.0	5.3	7.7	145.5
Checkups	81.1	80.6	0.5	0.7	38.6	38.1	0.6	1.5
Diagnostic imaging	47.1	48.0	△ 0.9	△ 2.0	22.4	22.7	△ 0.3	△ 1.2
Administrations	22.2	21.8	0.4	1.9	10.5	10.3	0.3	2.7
Injections	1.1	1.2	△ 0.1	△ 11.2	0.5	0.6	△ 0.1	△ 10.5
Rehabilitation	0.3	0.2	0.1	28.0	0.1	0.1	0.0	29.0
Procedures	205.0	210.0	△ 5.0	△ 2.4	97.6	99.2	△ 1.6	△ 1.6
Operations	40.5	37.9	2.6	6.8	19.3	17.9	1.4	7.6
Anesthesia	3.4	3.4	0.0	0.3	1.6	1.6	0.0	1.0
Radiation treatment	0.2	0.3	△ 0.1	△ 34.4	0.1	0.1	△ 0.0	△ 33.9
Crown restoration and deficiency repairs	545.1	550.7	△ 5.6	△ 1.0	259.6	260.2	△ 0.6	△ 0.2
Orthodontics	2.2	2.3	△ 0.0	△ 2.1	1.1	1.1	△ 0.0	△ 1.4
Pathological diagnoses	0.8	0.7	0.1	13.5	0.4	0.3	0.0	14.4
Admission fees, etc.	11.2	9.5	1.7	18.2	5.3	4.5	0.9	19.1
(Number of days per detailed statement)	(2.10)	(2.12)						

Figure 3 Composition of dental care points by type of medical practice per day

(Based on detailed statements assessed in June 2009)

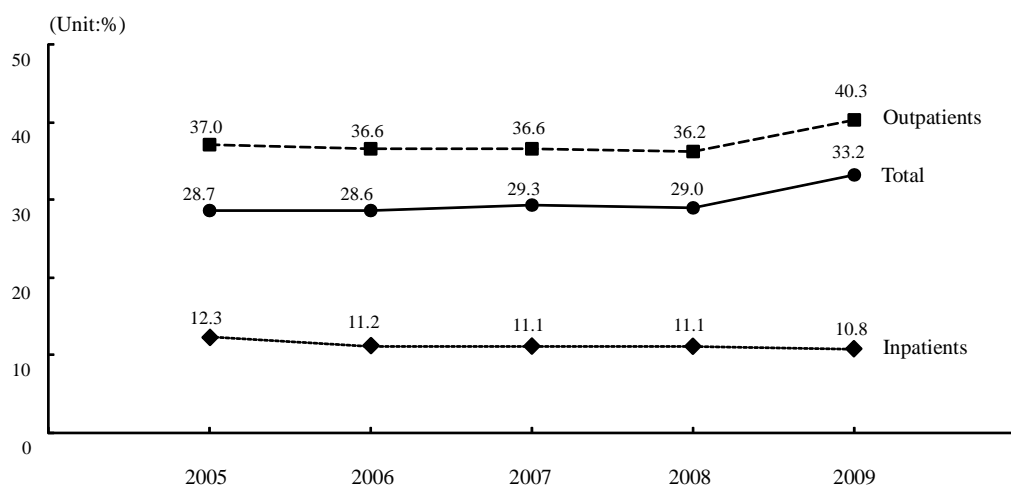


Note: "Other" refers to "home care", "administrations", "injections", "rehabilitation," "anesthesia," "radiation treatment," "orthodontics", "pathological diagnoses," and "admission fees, etc." .

○Ratios of drug fees in medical institutions (including pharmacy dispensing)

Figure 4 Ratios of drug fees for inpatients and outpatients in medical institutions (including pharmacy dispensing) by year

(Based on detailed statements assessed in June each year)



○Use of generic drugs

Table 4 Use of generic drugs for inpatients in-hospital prescriptions and non-hospital prescription

(Unit:%)

(Detailed statements assessed in June each year)

		2007	2008	2009	General medical care	Latter stage medical care	Hospitals	Clinics
Percentage of points of generic brands in the number of all brands	Total	6.8	7.2	7.5	7.5	7.6	5.2	9.5
	Inpatients	5.2	5.6	6.7	6.0	7.7	6.6	10.0
	In-hospital prescriptions (outpatients/administrations)	9.7	9.7	10.4	10.2	10.7	4.7	14.5
	Non-hospital prescriptions (pharmacy dispensing)	5.5	6.2	6.4	6.5	6.3	5.2	7.5
Percentage of number of generic brands in the number of all brands	Total	19.3	20.5	20.7	20.4	21.4	16.1	22.8
	Inpatients	17.2	17.3	19.4	19.1	19.6	19.2	23.2
	In-hospital prescriptions (outpatients/administrations)	24.5	25.0	26.0	25.4	27.1	16.3	29.3
	Non-hospital prescriptions (pharmacy dispensing)	16.4	18.3	18.4	18.2	18.8	15.7	19.5

Note: 1) For inpatients and in-hospital prescriptions, detailed statements with “administrations” are covered. However, detailed statements with prescription charges, those with medical practices including “administrations” and “injections”, and those concerning DPC are excluded.

2) Percentage of number of generic brands in the number of all brands =

Total number of generic brands per detailed statement /

total number of all brands per detailed statement × 100

※ **D P C (Diagnosis Procedure Combination)**

: In this survey, it means that “a comprehensive assessment system for medical care, provided per day during acute-phase hospitalization based on diagnosis procedure combination.”

(A system to determine the points per day by the combination of “injuries or diseases” for which medical resources provided most, and “medical activities” such as surgery, treatment and chemotherapy provided during hospitalization.)