



“Roofing work”

The important points for Safety and health

Winch, Safety standards for a working stoppage due to bad weather

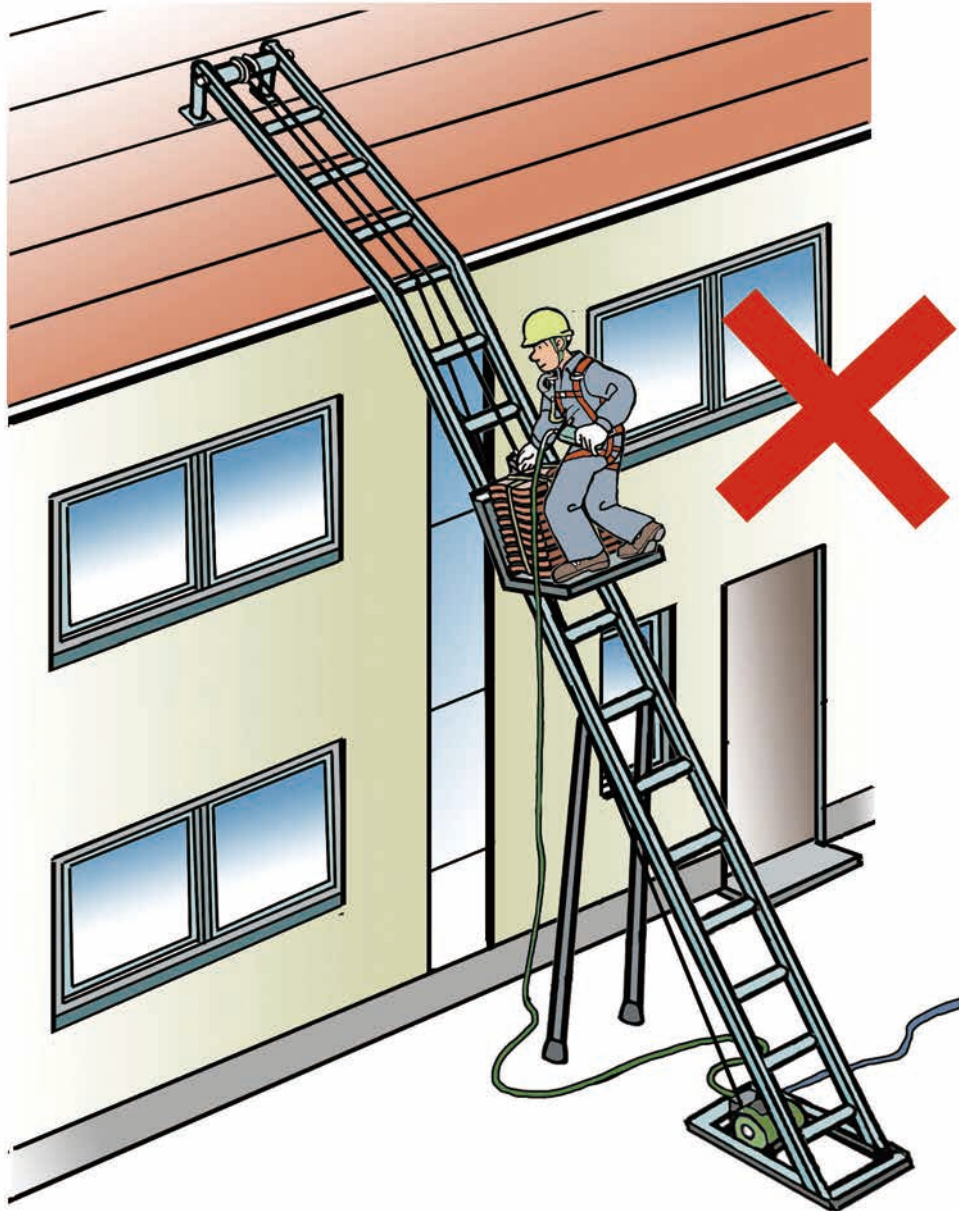
(1) Qualifications for winch (hoist) operations



Matters to follow

Operation of a winch (winding machine) used for a hoisting work or the like is carried out by a person who has received the “Special education for operation of winding machines”.

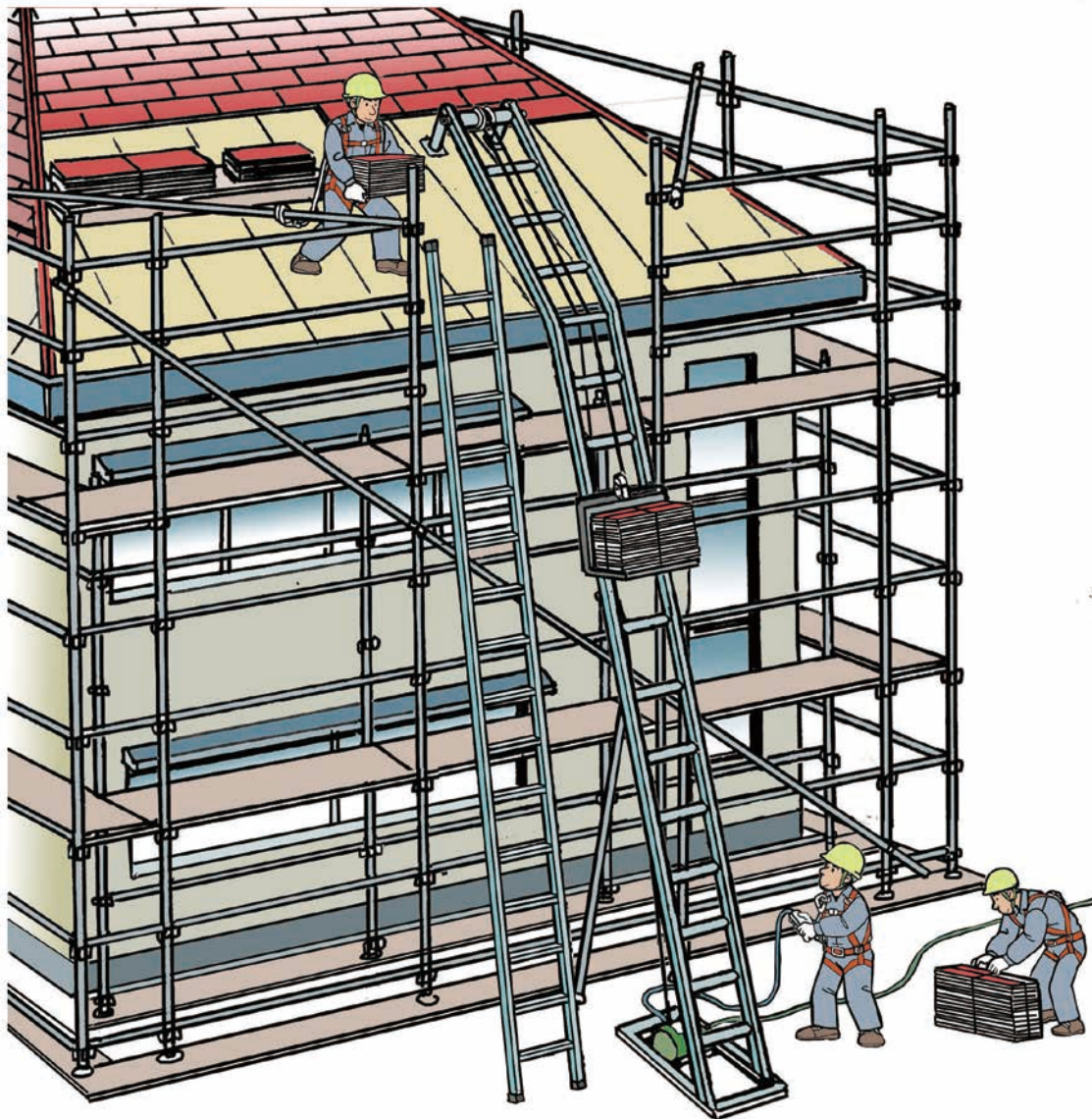
(2) No people on a roof tile hoist (no people on a cargo bed)



Matters to follow

1. No one can get on a cargo bed.
2. You should not go up and down on the ladder of a roof tile hoist.

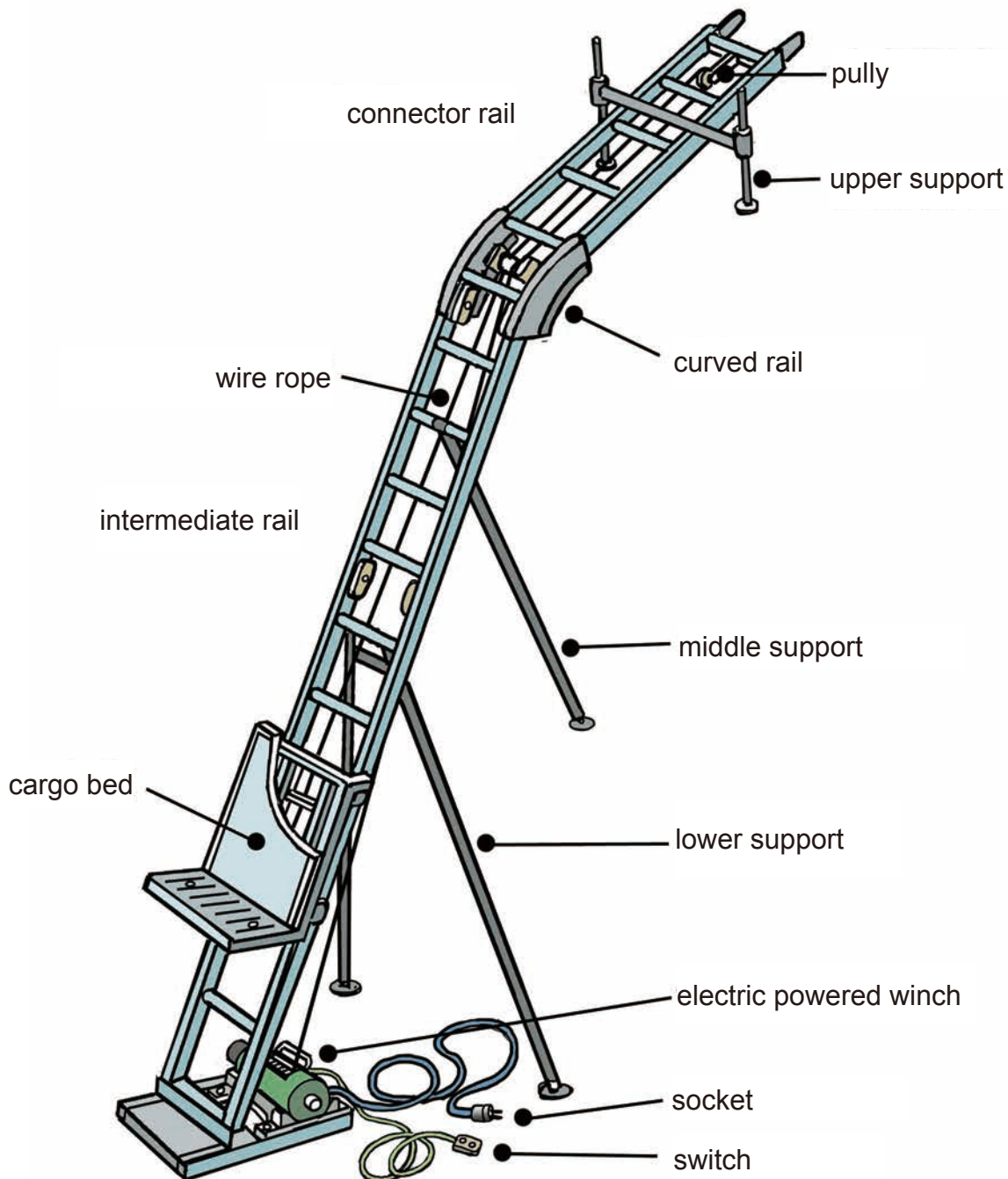
(3) Do not be distracted (do not distract from a load while operating)



Matters to follow

1. Do not carry loads over a person's head.
2. Do not enter under a moving cart or a cargo bed.
3. Do not operate in such a way that the loads or the ladder swings.
4. Do not operate when there is a person in the moving range of a cart/cargo bed.

(4) Prevent an entanglement (during operation, never touch a drum or a wire rope)



Matters to follow

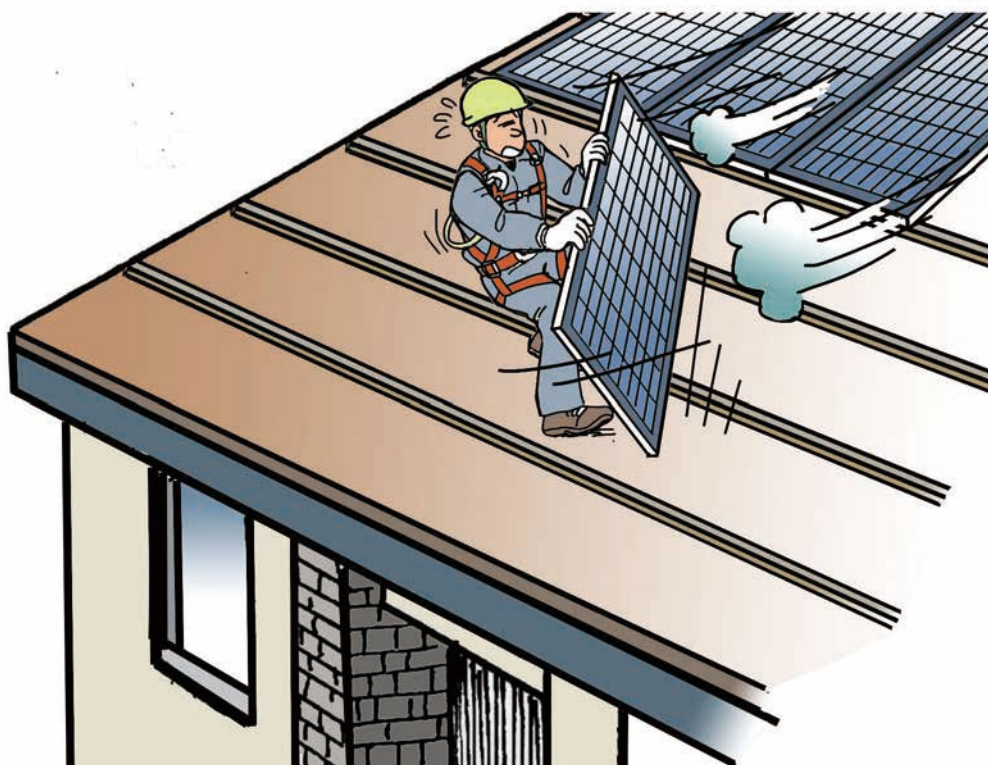
1. Do not touch a hoist wire rope.
2. Wear clothing that fit properly on your body, and do not wear accessories such as necklaces.

(5) Working in strong or stormy winds (Average wind speed in 10 minutes is 10m/second or more)

○ Working in strong winds and storms is dangerous!

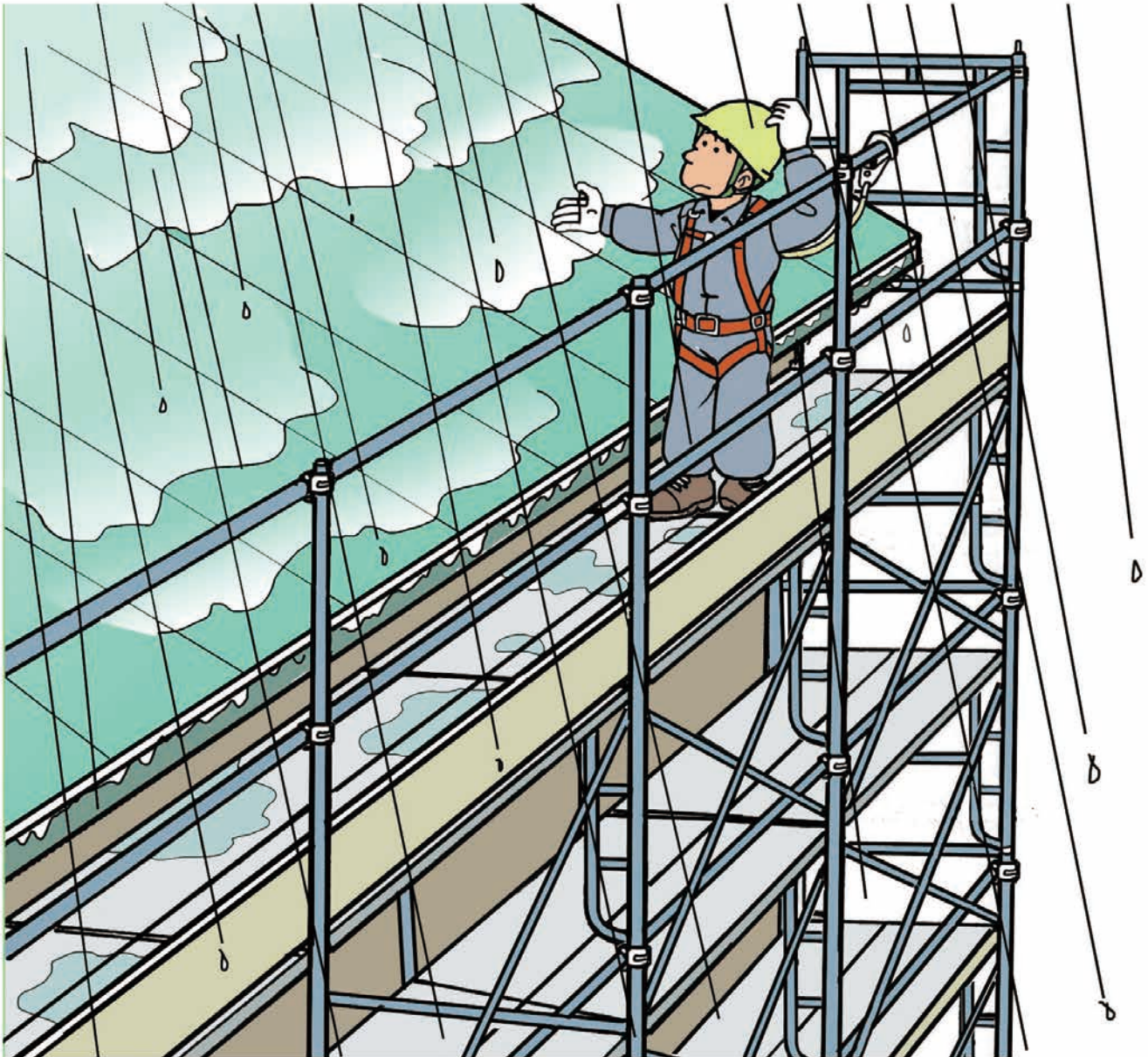
1. Secure your own safety.
2. Stop working on a roof when the wind begins to blow.
3. Let's prevent scattering and falling of materials.
4. If you reluctantly work on a roof, use a personal fall arrest system (fall prevention harness) with a safety line.

Example



When the victim was installing photovoltaic panels alone, while carrying a panel on a roof, he was hit by the strong wind and was almost blown away holding the panel.

(6) Work in heavy rain (The rainfall depth 50mm or more)



Matters to follow

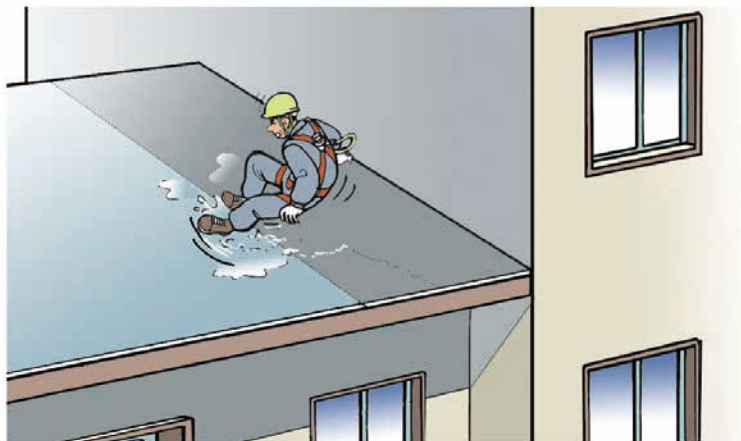
1. Do not use power tools to prevent an electric shock.
2. Pay attention to your feet as the roof is slippery.
3. After the rain, check electrical systems and tools before the work.

(7) Working in frost or heavy snow

1. Working in frost

Matters to follow

1. When it becomes frosty, never get on a roof.
2. You may get on a roof after the frost melts and the roof becomes dry.
3. When you work, achieve a temporary curing for frost the day before.



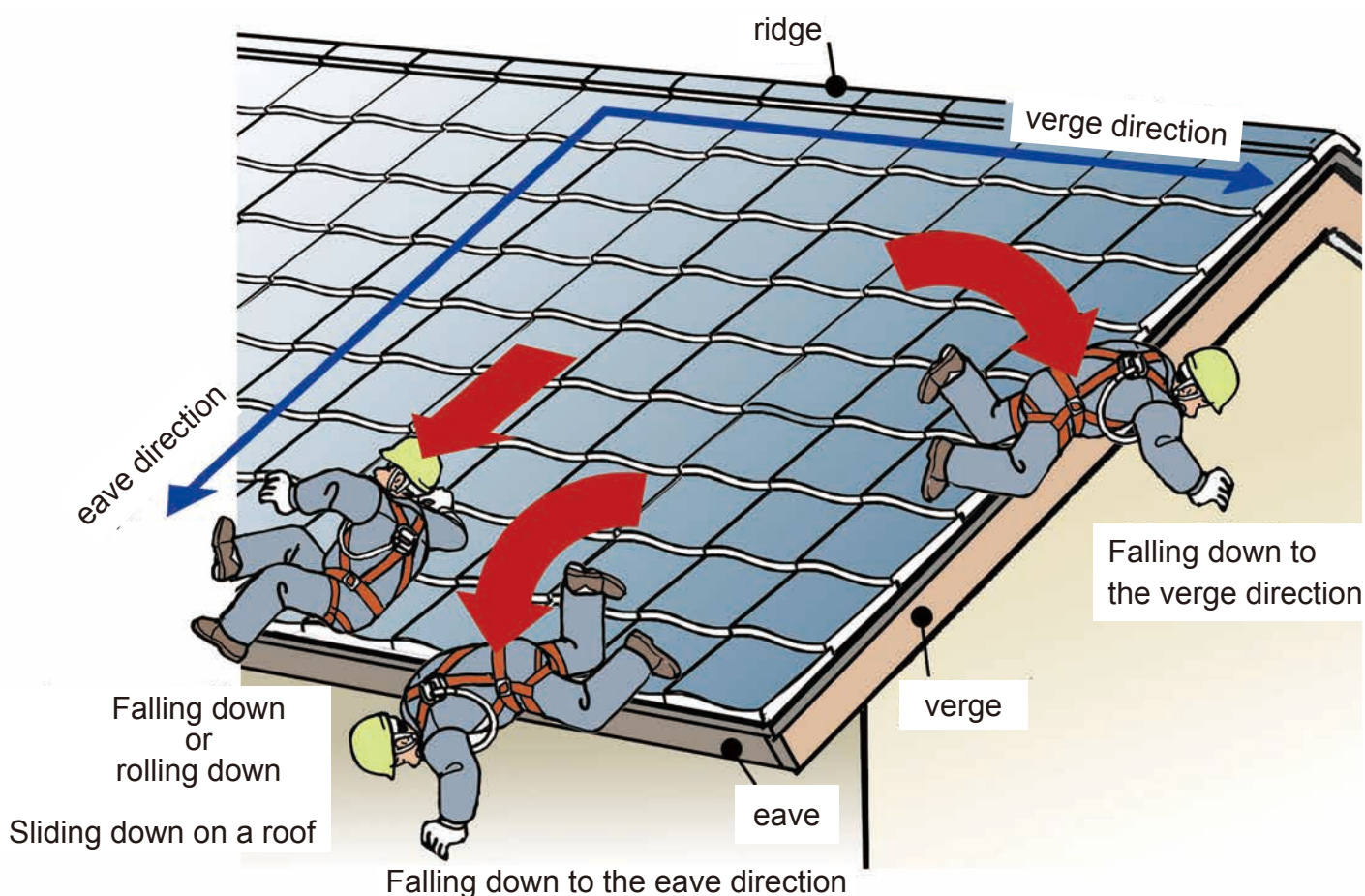
2. Work after a heavy snowfall (snowfall 25cm)

Matters to follow

Be careful not to get on a roof when snowing, and be careful when you take away the snow.



(8) Work at the time of an earthquake (Seismic intensity 4 or more)



Matters to follow

1. Stay calm and evacuate to a safe place.
2. When you resume the work, check and confirm scaffolds.
3. Let's think about what to do in case of an earthquake.