

# SUPPORT FOR ECONOMIC INDEPENDENCE, INCLUDING EMPLOYMENT OF PARENTS WITH YOUTHS/CHILDREN

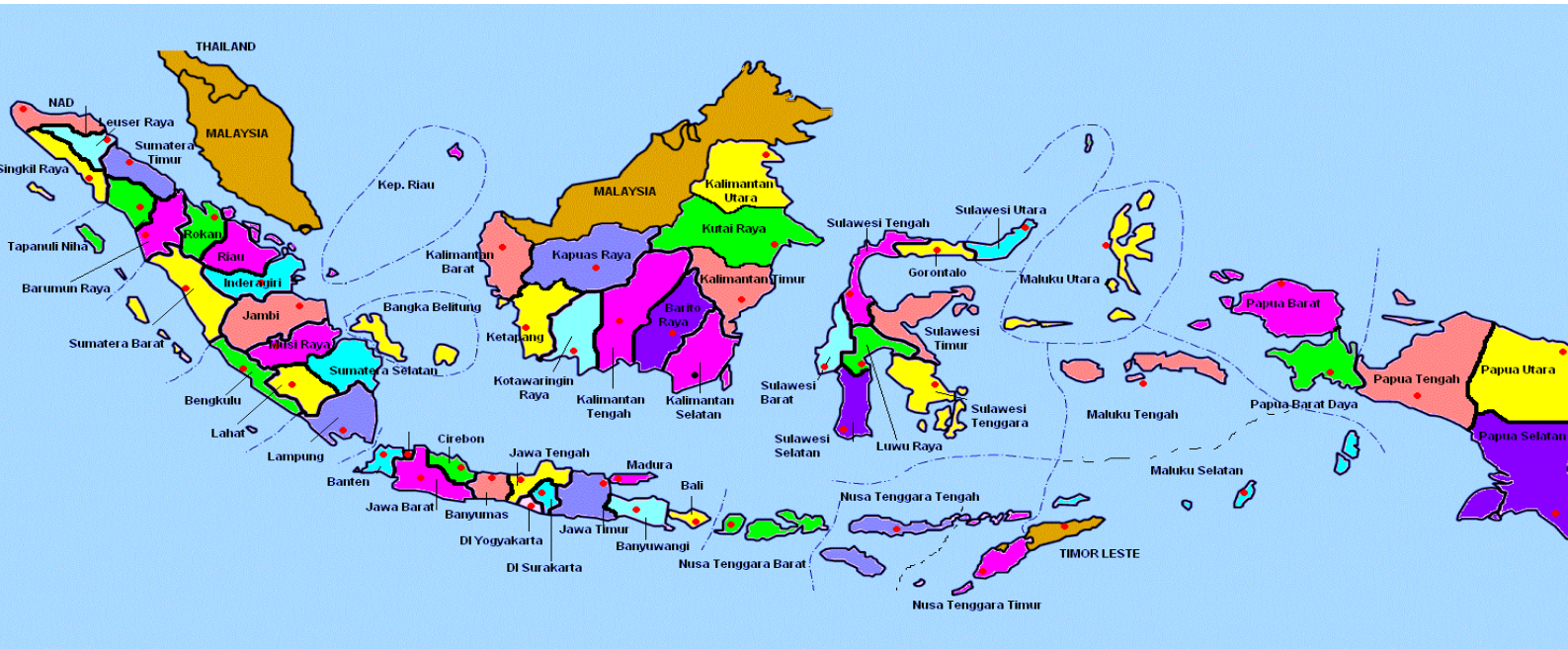
**The 16<sup>th</sup> ASEAN & Japan High Level  
Officials Meeting on Caring Societies  
Yokohama-Japan, 5-7 December 2018**

## **DELEGATION FOR INDONESIA**

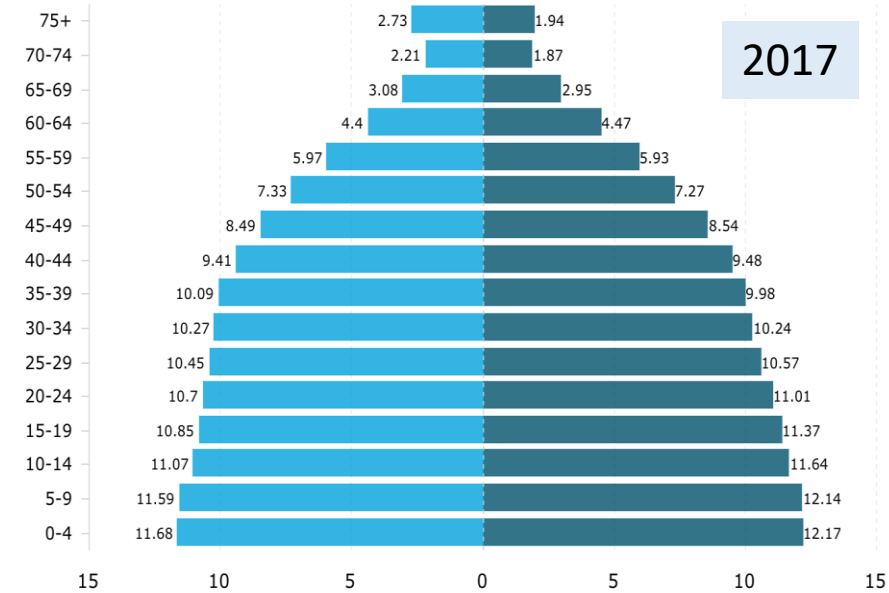
- Ministry of Social Affairs
- Ministry of Manpower
- Ministry of Health



# Country Profile



Land mass 1,9 million km<sup>2</sup>; 17,504 islands,  
34 provinces; 416 districts;  
98 municipalities; 7.201 subdistricts; 83.436 villages.  
Decentralized health system



*Estimation number of pop year 2017:*

*Population : 261 mio*

*Pregnant mother : 5.3 mio*

*Children 0 – 18 years : 80 mio*

*Underfive : 23 mio*

*Youth 10 – 18 years : 40 mio*





## VISION & MISION OF THE PRESIDENT OF REP INDONESIA

**TRISAKTI:**  
**Economic independence; sovereign in the politic;  
Personality in culture**

**9 of AGENDA PRIORITY (NAWA CITA)**  
**5th Agenda: Improve the quality of human life**

**HEALTHY INDONESIA  
PROGRAM**



**SMART INDONESIA  
PROGRAM**



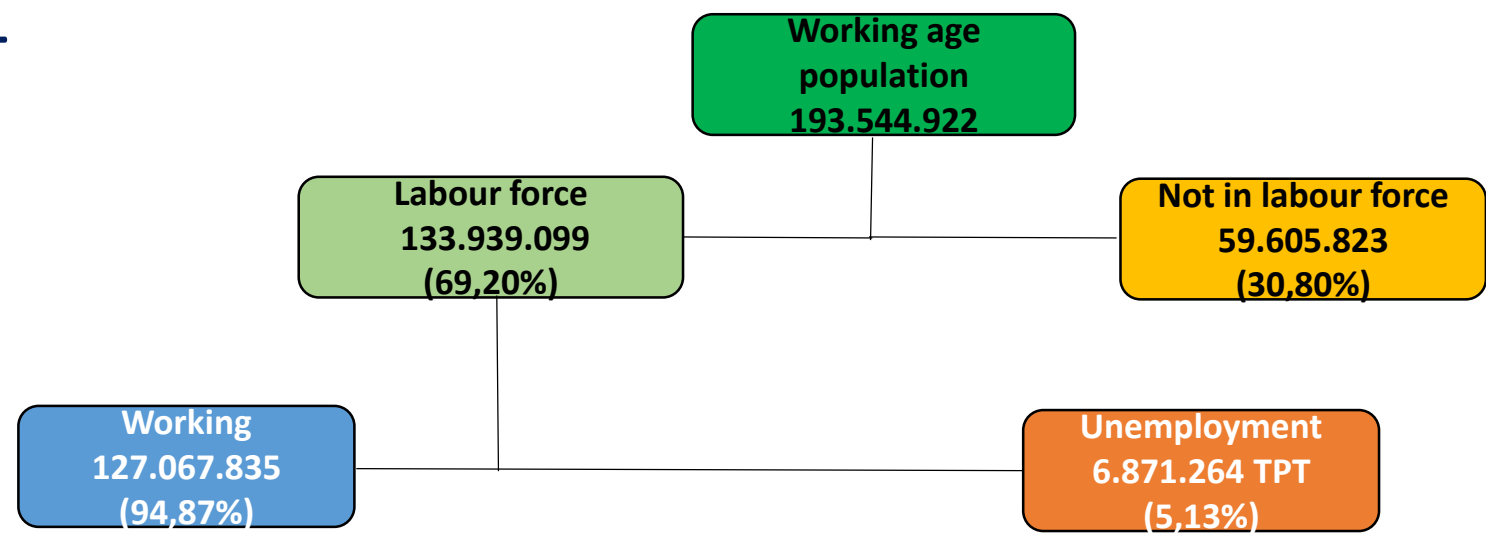
**WELFARE INDONESIA  
PROGRAM**



**WORK INDONESIA  
PROGRAM**



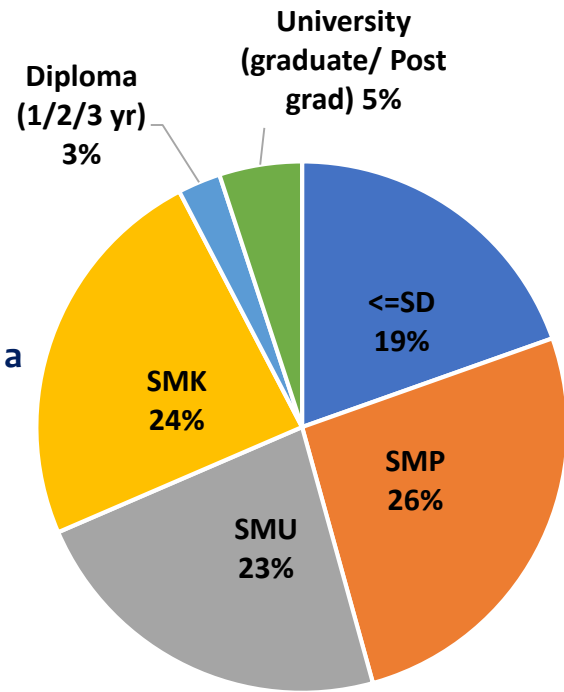
# CONDITION OF EMPLOYMENT



**Workers with the highest education attained**

More than 45% of Indonesian workers have a maximum education of junior high school and those with high school / vocational education or above reach 55%

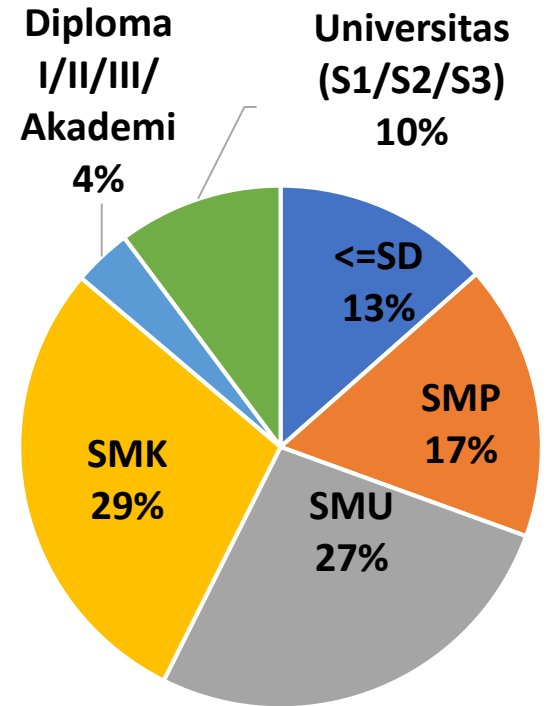
**Working**



**Unemployment according to the highest education attained**

About 30% of the unemployed workforce has a maximum education level of junior high school, and those with high school / vocational education are around 70%

**Unemployment**



Numbers of working on age 15-24 year: 21.939.552

# Social Welfare (SW) in Indonesia (Article 1, Law No. 11 of 2009)

## wel·fare

/ˈwelˌfer/ 

### synonyms

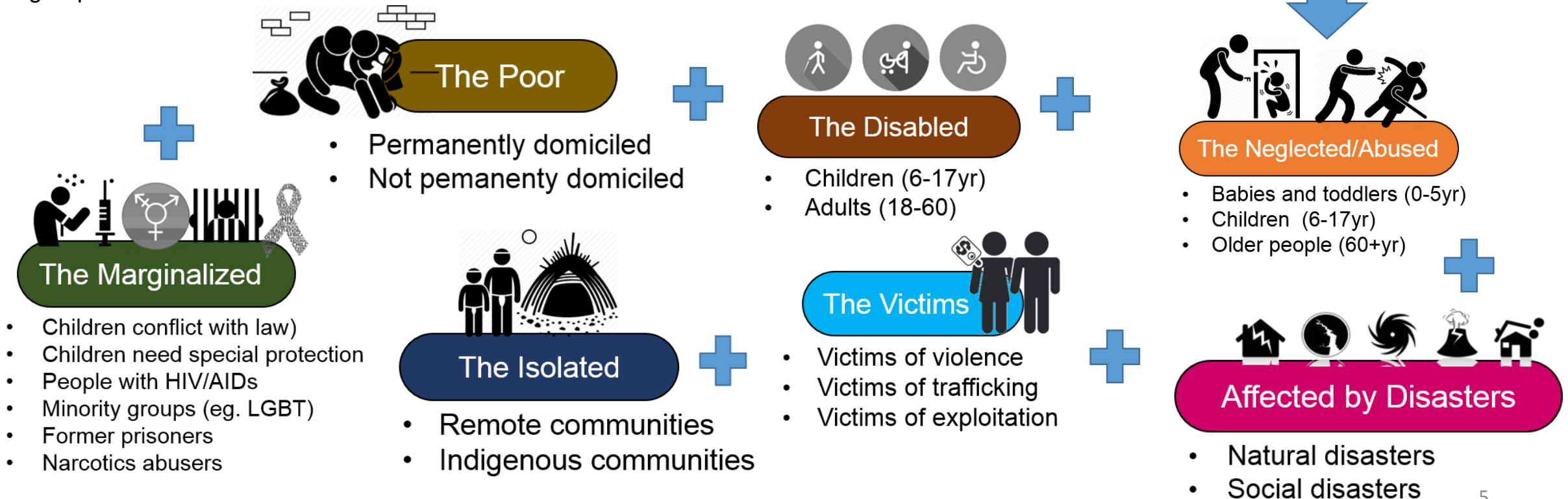
Well-being, health, comfort, security, safety, protection, prosperity, success, fortune, happiness and fortunes of a person or group.

## SW scope

Orchestrated efforts carried out by government, private and civil society in the form of **social services to meet the basic needs of every citizen**, which includes social **rehabilitation**, social **security**, social **empowerment** and social **protection**.

## SW target priority

...is **prioritized** for those who **have a life that is humanly improper** and has following **social problems criteria**..



# Impact of Child Disability on the Family



## The Disabled

- Raising a disabled child affect all aspects of family functioning.
- The impacts depend on the **type** and **severity** of disability as well as family's available **resources**.

### (+) side

- Broaden horizons
- Increase family members' awareness of their inner strength,
- Enhance family cohesion, and
- Encourage connections to community groups or religious institutions.

**NEED SUPPORT FOR  
ECONOMIC  
INDEPENDENCE**



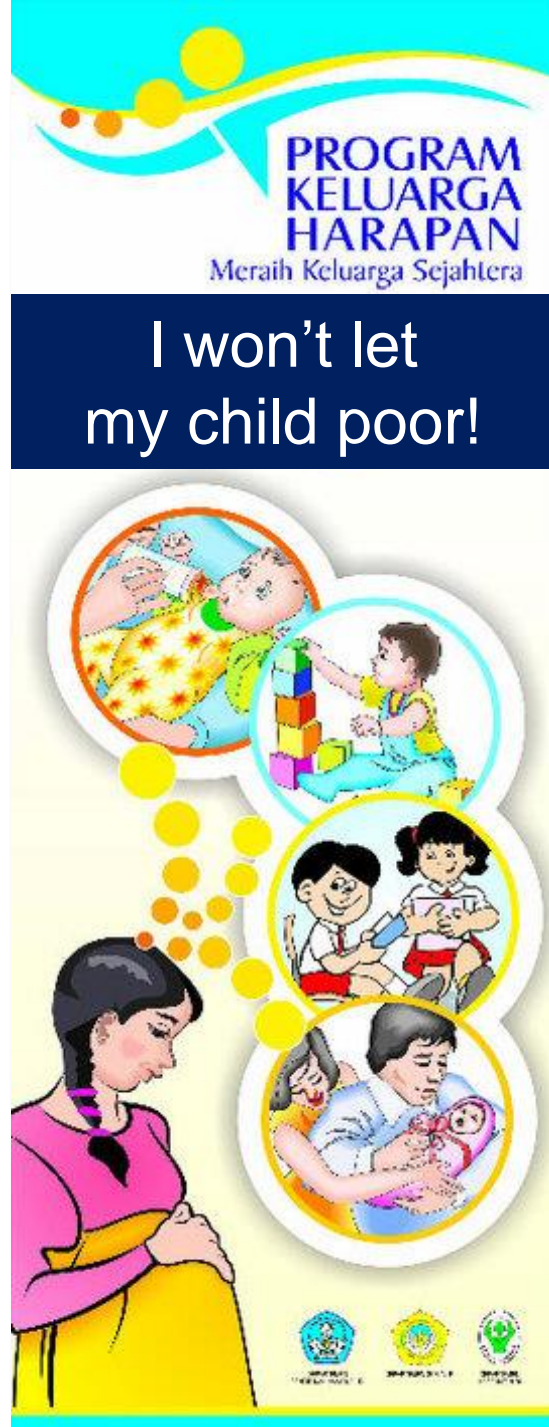
### (-) side

- financial and time costs,
- physical and emotional demands,
- logistical complexities,



may increase stress, difficulties in finding appropriate and affordable child care, and affect decisions about

**work** and **economic**



## Family Hope Programme

- Covers 34 Provinces and 10 million poor families.
- To improve the quality of Indonesian human resources by providing health and education access to the poor.
- Beneficiaries: pregnant mother, elementary school children, junior HS, senior HS, bedridden elderly, and severe disabilities.
- Contribute to the acceleration of SDGs
  - Break the cycle of poverty for future generation
  - Reduce child mortality
  - Improve educational attainment of children



## Social Welfare Programme for Children



- Began in 2010 to response economic crisis
- Cash Transfer via children's bank account.
- Coverage : 34 Provinces
- Beneficiaries: neglected babies, CNSP, children in institutions, street children, children in contact with the law.
- Supporting activities: case responses by social worker, capacity building for parents (parenting skills) and NGO, Hotline Service.



## Social Assistance for Person with Severe Disabilities



- Covers 34 Provinces
- Cash Transfer
- Beneficiaries: severe disabilities
- Objective: to ease the burden of daily expenditure, to meet basic needs, to keep the person with disability healthy.
- Supporting activities: Home Care, Day Care, Family Support



# Indonesia Smart Program

*The regulation of Minister of Education number 9 year 2018*

- Cash transfer provided by government for students from poor family in formal or non-formal education
- Targeted students:
  - orphans students including is in orphanages;
  - special needs is in regular schools;
  - the parent/ guardian is in prison;
  - status as a suspect/ prisoner in a detention center or prison;
  - affected by natural disasters;
  - victims of disaster in conflict areas;
  - is in Packages A, B, and C at the Learning Activity Studio (SKB) and Community Learning Center (PKBM).



# PREPARE YOUNG GENERATION FOR INDONESIAN GOLD

1

## Development of Work Competency Standards

Involving industry and the business world in developing the competence of human resources workers recognized industry and the business world, developing dynamic, and easy to apply

2

## Strengthening of Certification Bodies

Ensure quality of human resources and encourage easy access of certification

3

## Strengthening Access and Quality Vocational Training:



Reorientation,  
Revitalization and  
Rebranding (3R)  
Training Centers



Encourage  
industry  
involvement in  
human resource  
investment  
through vocational  
training



Serikat Pekerja an  
important role in  
encouraging and  
ensuring that their  
members receive quality  
vocational training

4

## Mastery and Utilization of The Latest Technology

5

## Encourage The Growth of Entrepreneur (New Entrepreneur)



# Efforts Made by The Indonesia Government

## Law number 13 year 2003 concerning of Employment



Empowerment for Youth and Women

Empowerment for Person with Disabilities

Infrastructure Labour Intensive

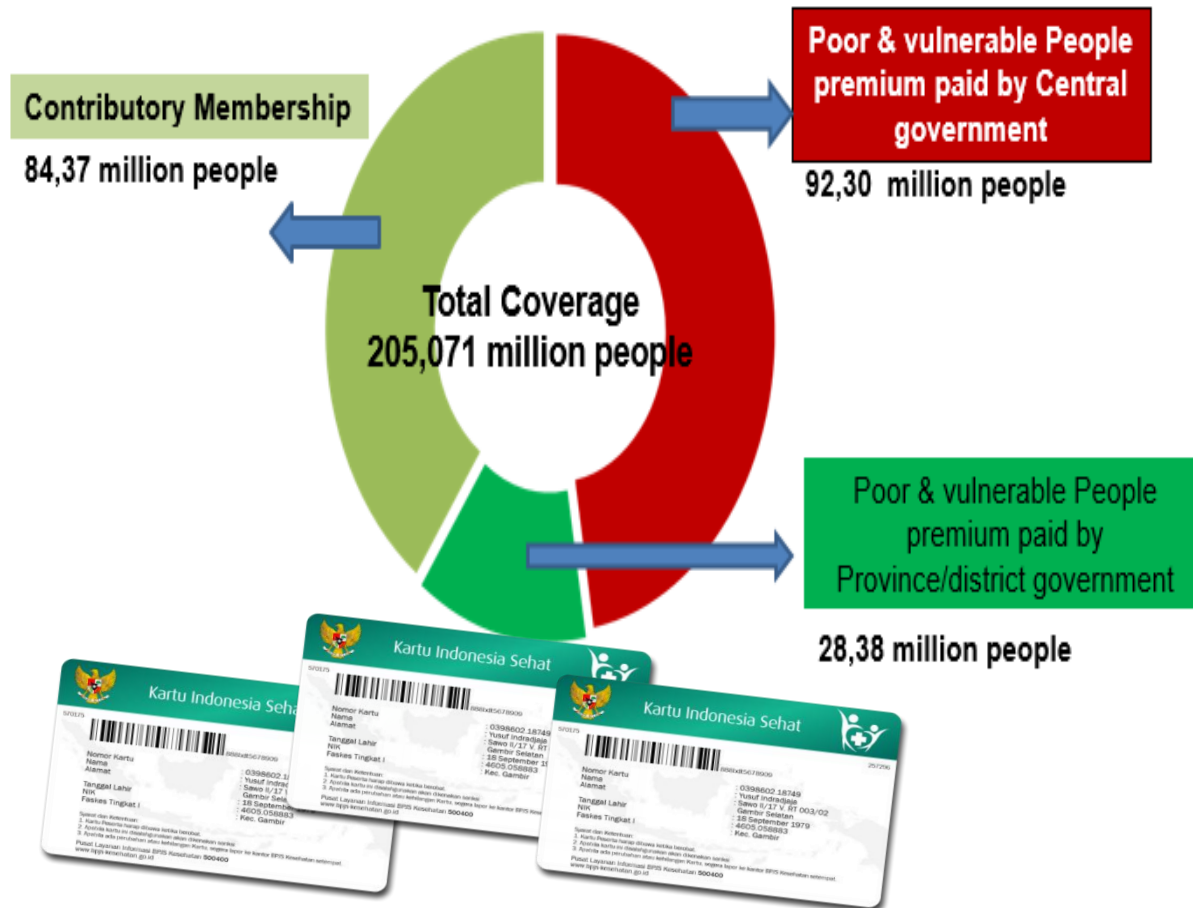
Productive Labour Intensive

Entrepreneurship

# Social Health Insurance

## Membership Coverage of SHI

Until 1<sup>st</sup> Nov 2018

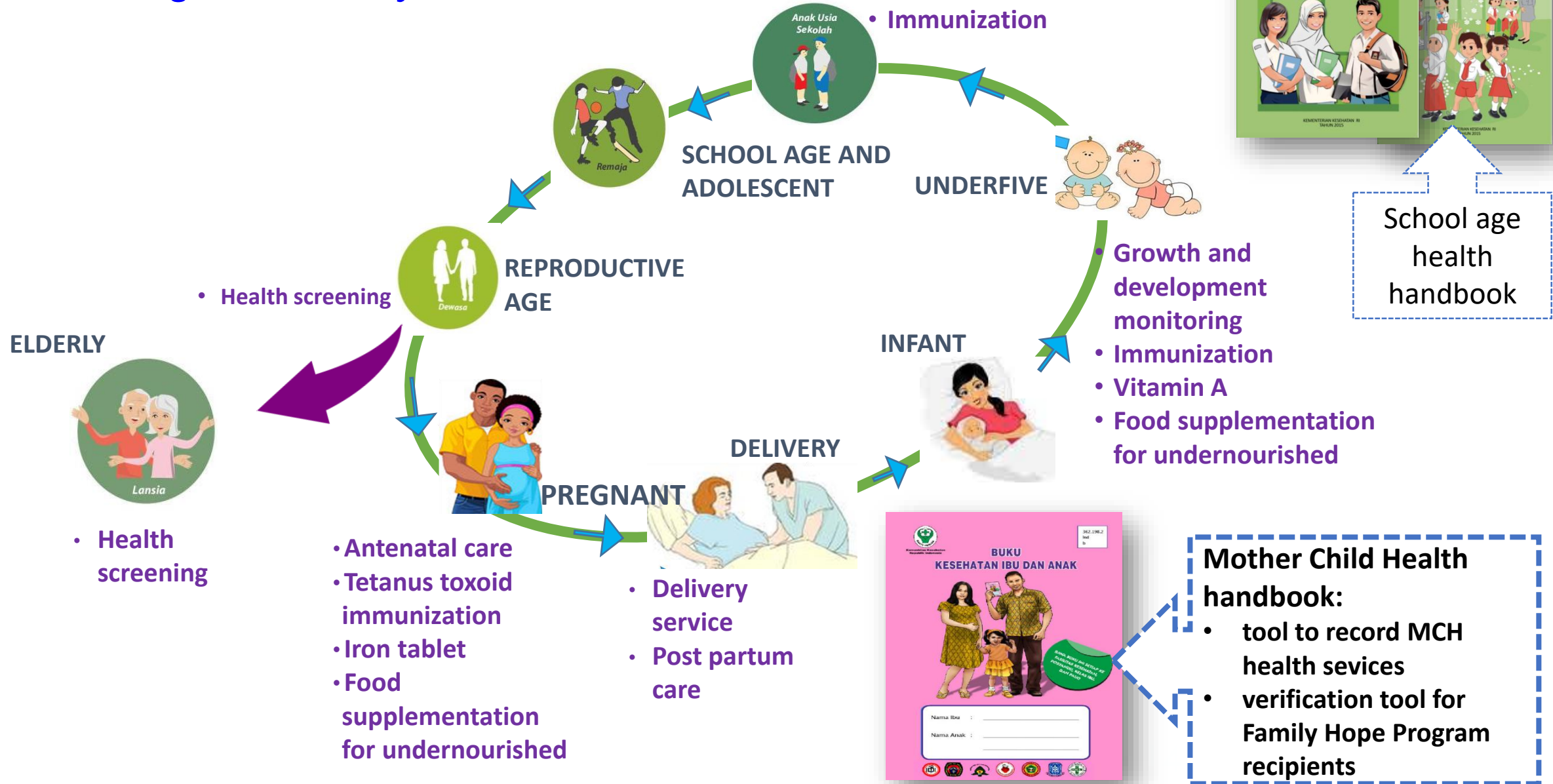


Presidential Regulation number 82 of 2018 concerning Health Insurance:

- Government employee including family members for maximum 4 persons
- Newborns from SHI members entitled to health insurance benefit until 28 days
- Premi of insurance covers by government:
  - ✓ Poor people
  - ✓ Permanent disability
  - ✓ Orphans from Veterans
- SHI members who become unemployed entitled to health insurance benefit until 6 months

# Essential Health Services

Government regulation no 2 year 2018





# Occupational Health



## HEALTH PROTECTION in WORK PLACE

Regulation of the Minister of Health No. 48 of 2016 concerning Occupational Health and Safety at Workplace.

## MATERNITY LEAVE for 3 MONTHS

- Labor Law of 1979
- Regulation of the National Civil Service Agency No. 24/ 2017 concerning Procedures for Giving Leave for Civil Servants

## NURSERY ROOM in WORK PLACE & PUBLIC FACILITY

- Regulation of the Minister of Health No. 15 of 2013 concerning procedures for providing special facilities for breastfeeding and/ or breast-pumping.
- Joint agreement of The Ministry of Women Empowerment and Child Protection and the Ministry of Health number 48/Men.PP/XII/2008, PER.27/MEN/XII/2008, 1177/Menkes/PB/XII/2008 concerning Increased Breastfeeding During Office Hours at Work
- Joint agreement of the Ministry of Health, Ministry of Home Affairs, Ministry of Manpower and The Ministry of Women Empowerment and Child Protection number HK.03.01/MENKES/31/2017, 119/207A/SJ, 1/KB/MEN/I/2017, 1/MPPPA/2017 concerning The Healthy Productive Women Workers Movement (GP2SP).



Thank you