

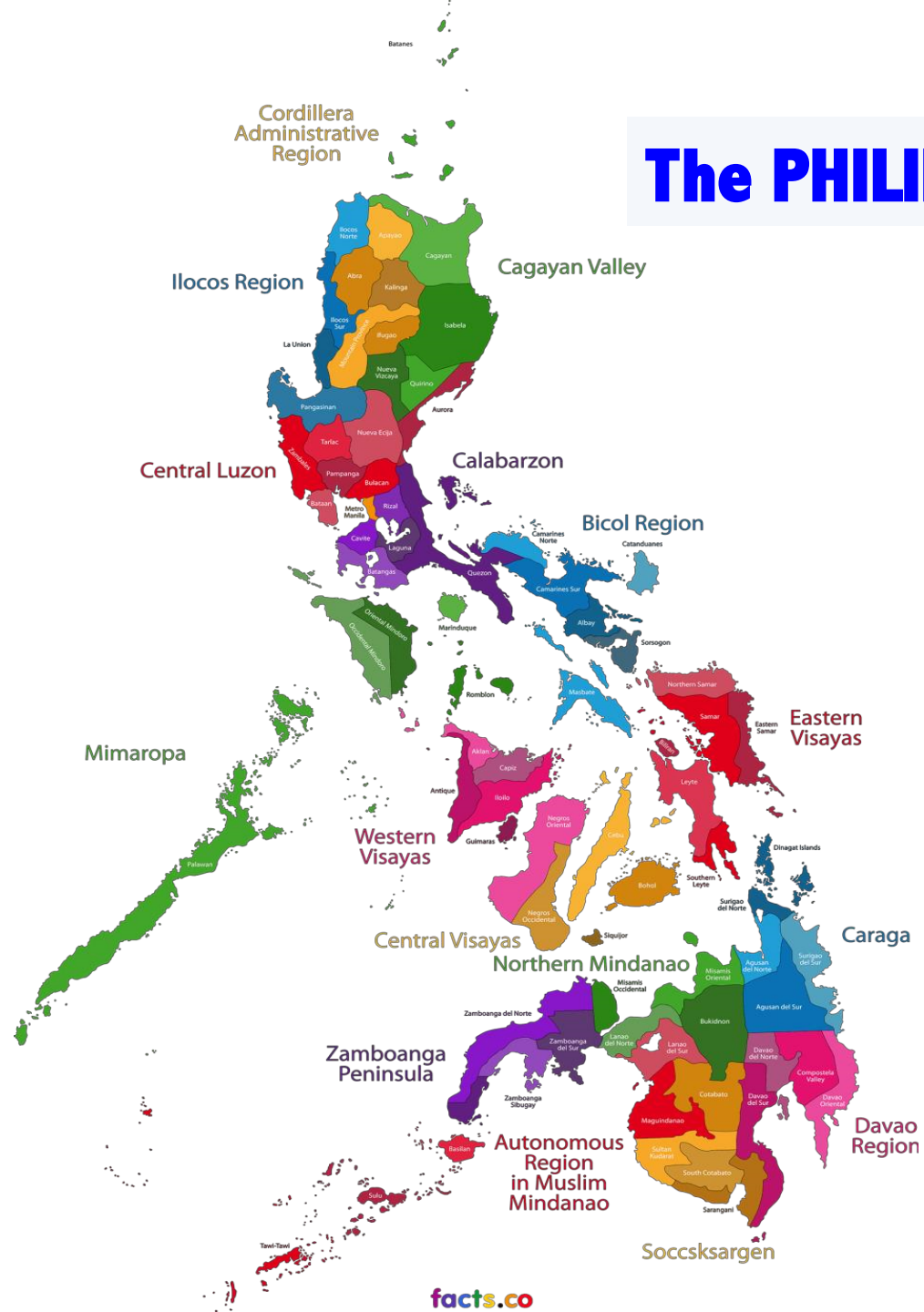
**16th ASEAN and Japan High Level Officials Meeting on Caring
Societies**

4-7 December 2018, Japan

PHILIPPINE REPORT

***“Collaboration in Health / Welfare Services for
Children and Youth and Capacity Development
for Human Resources in Local Community”***

Reported by: Director Wilma D. Naviamos
DSWD Regional Director



The PHILIPPINES

- 7,107 islands
- 300,000 sq. km.
- 17 regions
- 81 provinces
- 33 highly urbanized cities
- 145 cities
- 1,489 municipalities
- 42,036 barangays
- **population: 105.1 Million**

Source: Philippine Statistics Office

Ministries representing Philippine SOMSWD, SOMHD and SLOM

PH SOMSWD



PH SOMHD



PH SLOM



MANDATES

- ❖ **DSWD**: implement programs, projects and services that will alleviate poverty and empower disadvantaged individuals, families and communities for an improved quality of life
- ❖ **DOH**: over-all technical authority on health that provide national policy direction and develop national plans, technical standards and guidelines on health
- ❖ **DOLE**: policy-making, programming, coordinating and administrative entity of the Executive Branch of the government in the field of labor and employment

Collaboration for Children / Youths Needing Support and Capacity Development for Human Resources in Local Community

First 1,000 Days Program for Pregnant Women and Newborns

Pantawid Pamilyang Pilipino Program (Conditional Cash Transfer)

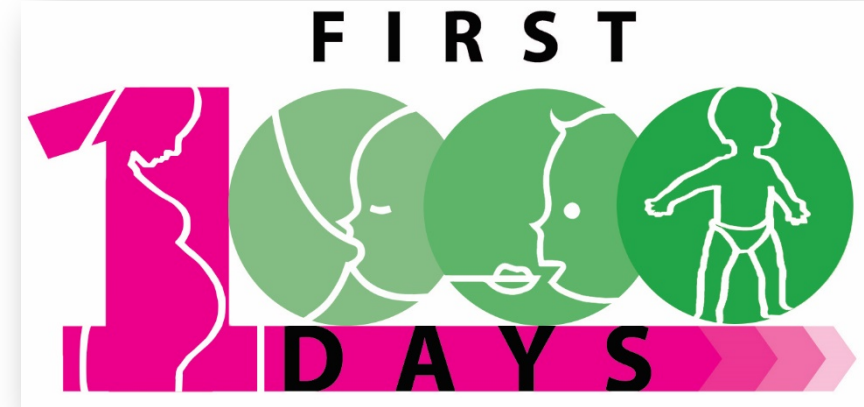
Supplementary Feeding Program for children in Child Development Centers

Adolescent Health and Youth Development Program

Guaranteed PhilHealth Membership for Indigents

Batang 1,000 (First 1,000 Days)

- ❖ **aims to improve the nutritional status of pregnant women and their newborns from conceptions under they reach two years of age. Specifically, the implementation of nutrition-specific and nutrition-sensitive interventions vital to child's growth and early development.**



Areas of Collaboration

- ❖ **Promotion of optimum infant and young child feeding;**
- ❖ **Nutritional services in ante-natal care;**
- ❖ **Health services for prenatal, perinatal, immunization, management of childhood illnesses, reproductive health**



Supplementary Feeding Program

- ❖ a community-based, 6-month feeding program addressing the immediate nutritional and health needs of children, through the provision of daily hot meal and milk, as well as medical check-up, deworming and primary complex treatment.



Areas of Collaboration



- ❖ Working with parents in the preparation of hot meals
- ❖ Deworming before the conduct of feeding and child growth monitoring by the Barangay Health/ Nutrition Scholars
- ❖ Augmentation support for the feeding program of children in LGU-managed Child Development Centers
- ❖ Conduct of nutrition and health education / sessions for parents and care givers

Pantawid Pamilyang Pilipino Program

- ❖ is a human development program of the national government that **invests in the health and education** of children 0-18 years old from eligible poor households. Its objectives include provision of **social assistance** and **social development**.



Collaboration Efforts in Health and Welfare Services



Pre and post-natal care



Conduct of Family Development Sessions



Regular preventive health check-ups and vaccination for 0-5 yrs. old children



Deworming twice a year for 6-14 yrs. old children



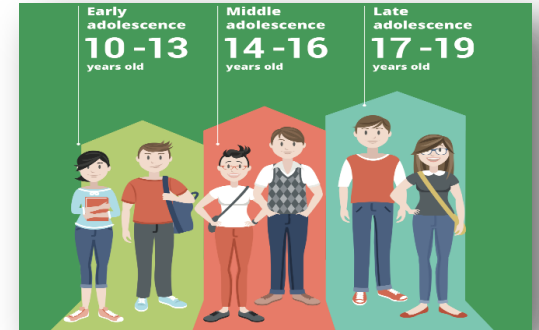
Regular attendance in schools for 0-18 years old child beneficiaries

Adolescent Health and Youth Development Program

- ❖ **Goal: to improve the health status of adolescent and to enable them to fully enjoy their right to health.**

Areas of Collaboration

- ❖ **Provision of interventions that will address adolescent health: nutrition; oral health; vaccine preventable diseases; mental health; injuries; violence; sexual and reproductive health (family planning, safe motherhood, HIV, STI); substance abuse (drugs, alcohol, tobacco use)**
- ❖ **Conduct of Youth Development sessions in Highschools ages 14-18 years old in Expanded Student Grants in Aid for Poverty Alleviation Program (Pantawid Program or CCT)**
- ❖ **Adolescent Health Education and Sessions on Teenage Pregnancy**
- ❖ **Practical Training for Healthcare Service Providers**
- ❖ **Meaningful involvement of Parents and Local Communities**
- ❖ **Strengthened stakeholders' participation**



Guaranteed PhilHealth Membership for Indigents

- ❖ **Espouses the primary value financial risk protection, which seeks to ensure that its members gain financial access to health services, and don't fall into poverty upon seeking medical care**
- ❖ **all identified indigents are automatically be enrolled and covered under the Program.**



Areas of Collaboration

- ❖ **The DSWD through its National Household Targeting System (NHTS) for Poverty Reduction capture those who are vulnerable and all identified as indigent are automatically enrolled and covered under the Program.**

Capacity Development for Human Resources

JOBSTART

- ❖ Program designed to enhance the employability of at-risk youth to improve their integration into productive employment through holistic employability enhancement interventions.

PESO

- ❖ Established to carry out full employment and equality of employment opportunities, and for this purpose strengthen and expand employment facilitation service machinery of the government at the local levels.

TUPAD

- ❖ is a community-based (municipality/ barangay) package of assistance that provides emergency employment for displaced workers, underemployed, and unemployed poor.

Capacity Development for Human Resources

Capacity Building of Service Providers

- ❖ **Capacity building and knowledge exchange on welfare and health service delivery through conduct of trainings, seminars, fora; DepED and TESDA-provision of alternative learning system (ALS), and technical, vocational and skills training**

Strengthening Local Governance

- ❖ **Local Government as a direct implementer and coordinator of social protection programmes and services**

Community Driven Development

- ❖ **helping poor communities to develop the necessary skills and to provide them with resources in selecting, implementing, and sustaining small-scale community infrastructure projects and key social services**

THANK YOU and MABUHAY!!!



PH SOMSWD Secretariat at email:
ead@dswd.gov.ph