
Promoting a healthy society

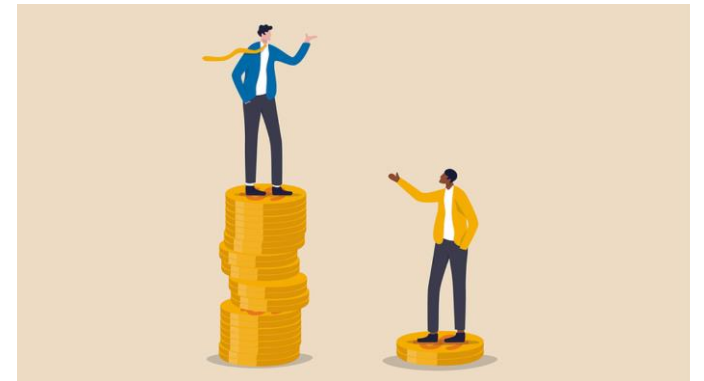
Dr. Joana Madureira Lima

WHO Western Pacific Regional Office

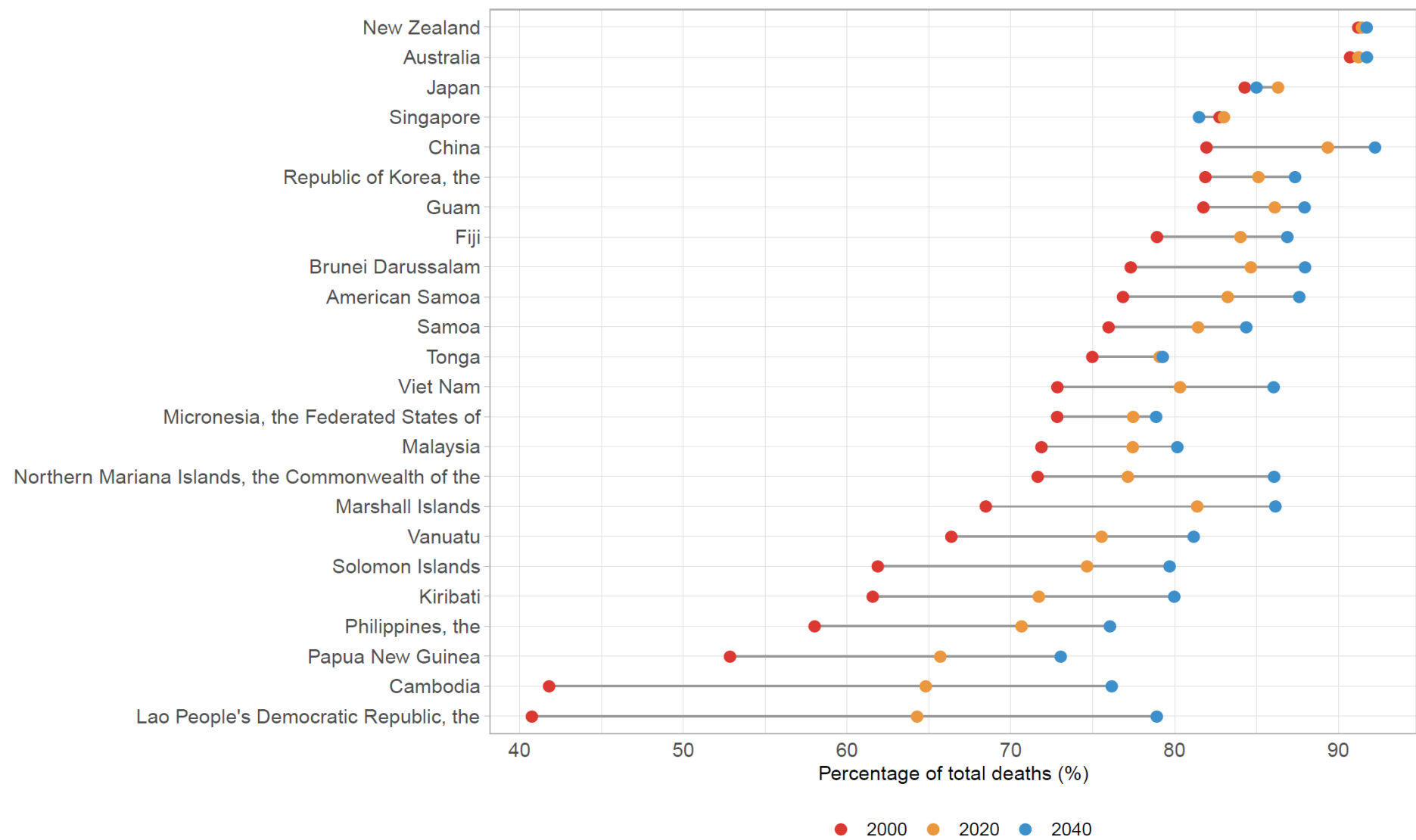
Division of Healthy Environments and
Populations

Our region is experiencing rapid changes

- Changes in the region are affecting the health of our people
- Ageing, rising NCDs, climate change, and persisting inequities make people vulnerable



Burden is Shifting to NCD in the Western Pacific Region



Source: Institute of Health Metrics and Evaluation, Global Burden of Disease Study, 2018.

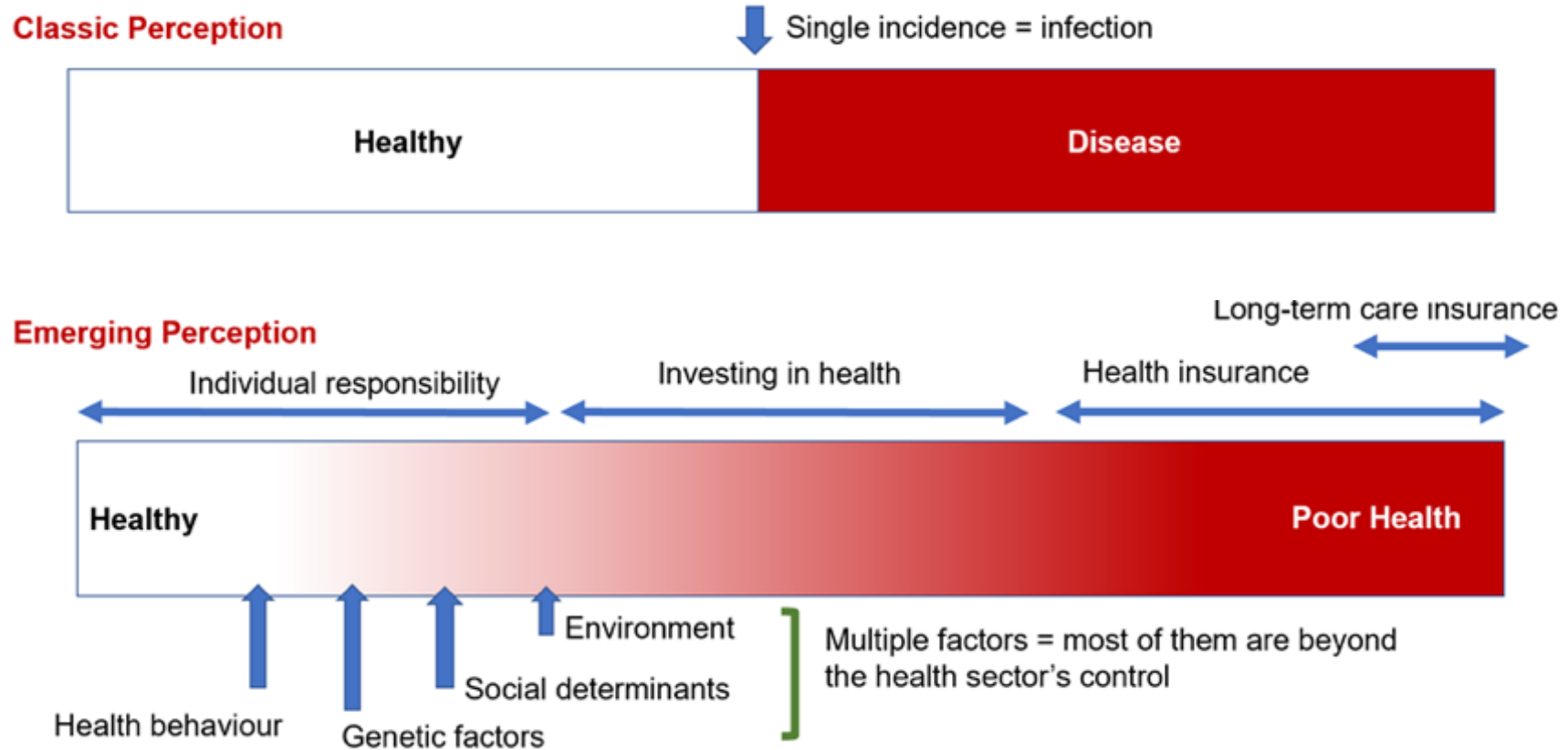
Our health is mostly defined by factors outside the health system

- Research shows physical environment, social determinants, and behavioral factors drive 70-90% of health outcomes
- By fostering healthy society and environment, we can achieve better health and well-being for all

THE DRIVERS OF HEALTH ARE COMPLEX AND INTERCONNECTED



Concept of health is changing: from 'sick' to 'health' system

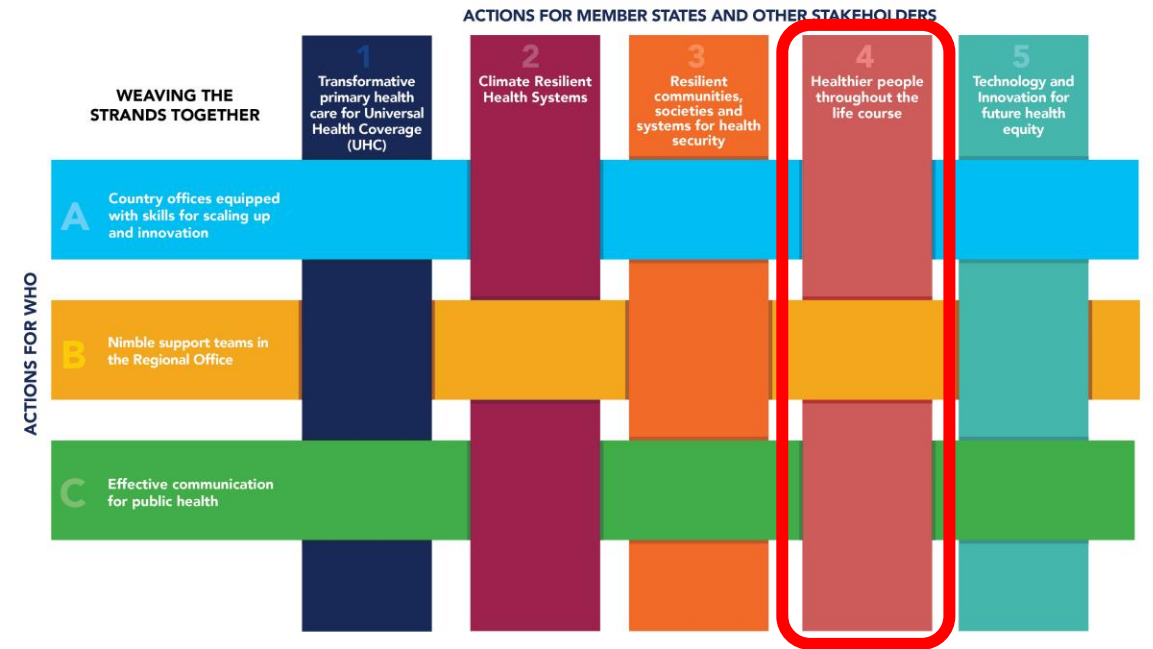


Source: Nakatani H. Globalization of public health: challenges and opportunities for globalization. The Journal of Public Health Practice. 2020;84:356–62.

Aligned vision across all levels of WHO



WHA, and the GPW 14C



Regional Vision 2025-2029

Division of Healthy Environments and Populations (DHP)

DHP supports action across governments and societies to improve the health and wellbeing of populations

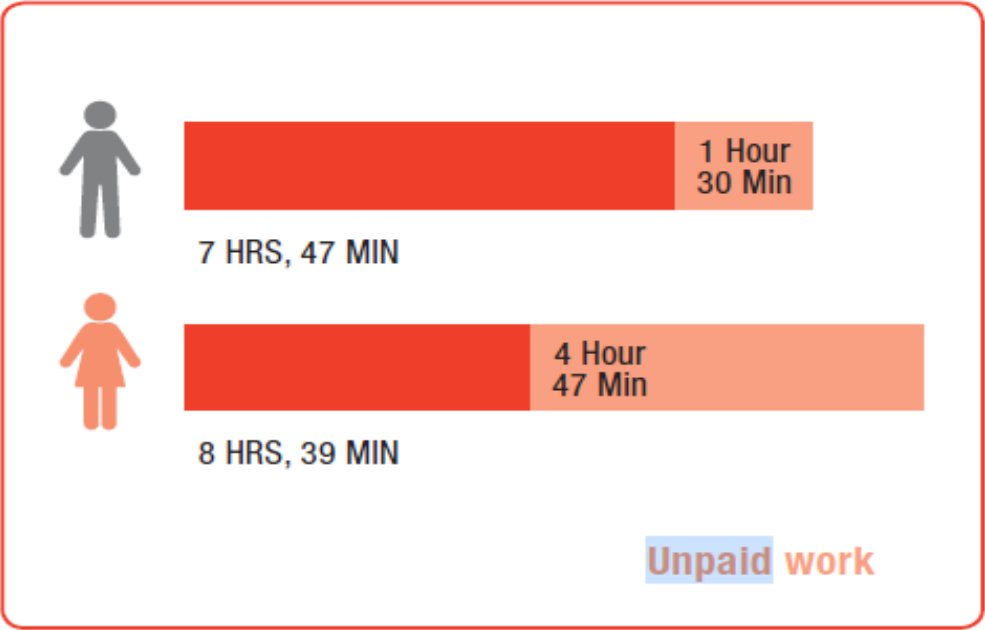


Understanding the Care Economy



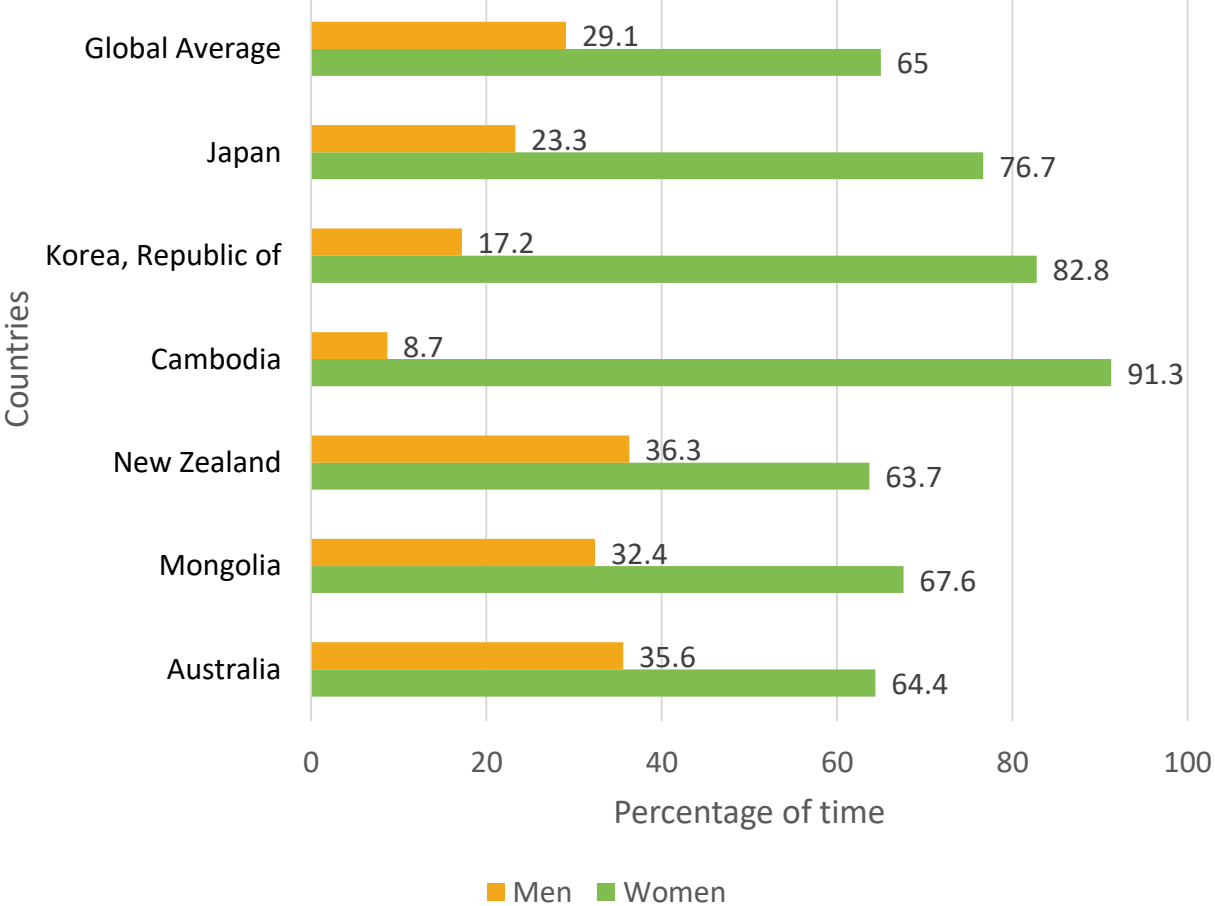
Women spend more time on unpaid care work than men across the world

Average workday and unpaid work, men and women



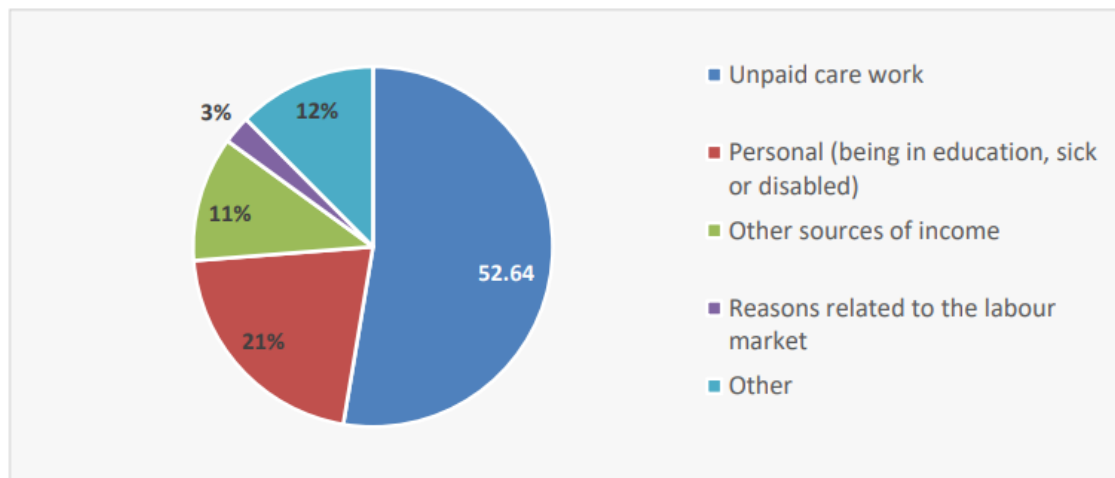
Source: Based on data from World Economic Forum (30).

Women and men's share of total unpaid care work



Unpaid care work is the main reason women are not in the labour force

Percentage of inactive women, by main reason for being outside the labour force Women (2018)

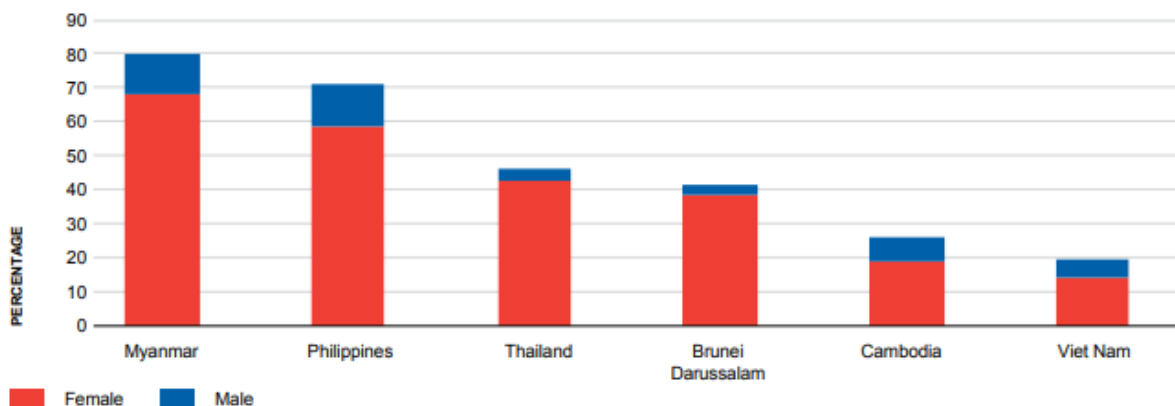


Note: Age group: 15 and older. Estimates weighted by the working-age population.

Source: ESCAP calculations based on ILO, Care work and care jobs for the future of decent work, 2018.

Percentage of inactive persons with main reason for being outside the labour force given as unpaid care work, 2019

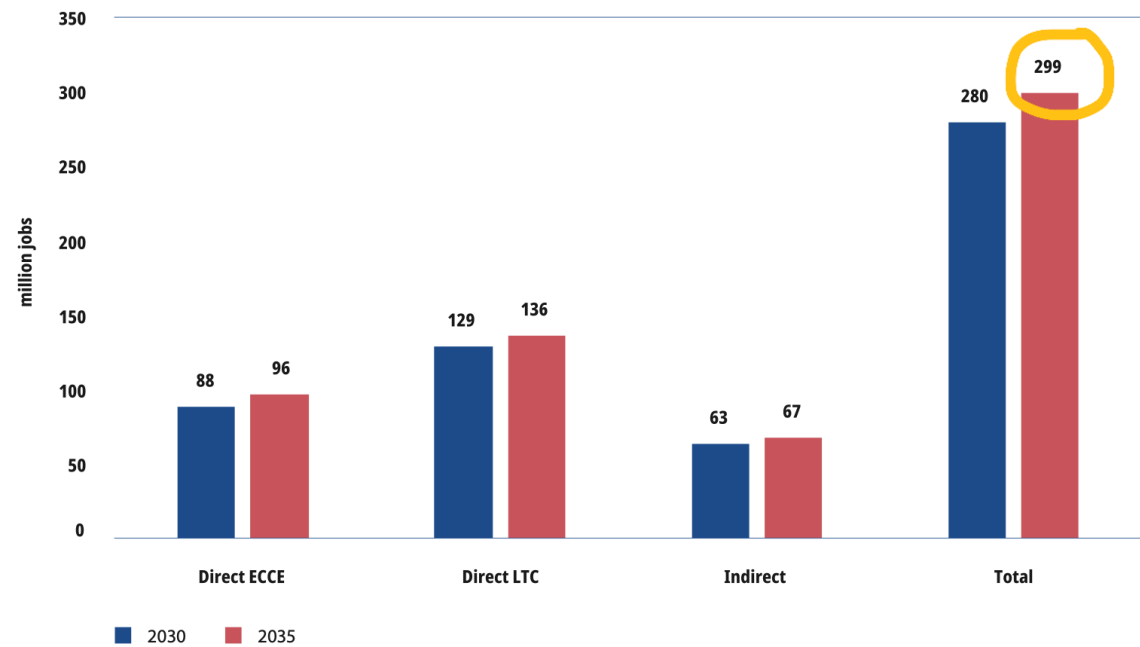
Figure 11. Percentage of inactive persons with main reason for being outside the labour force given as unpaid care work, latest year available



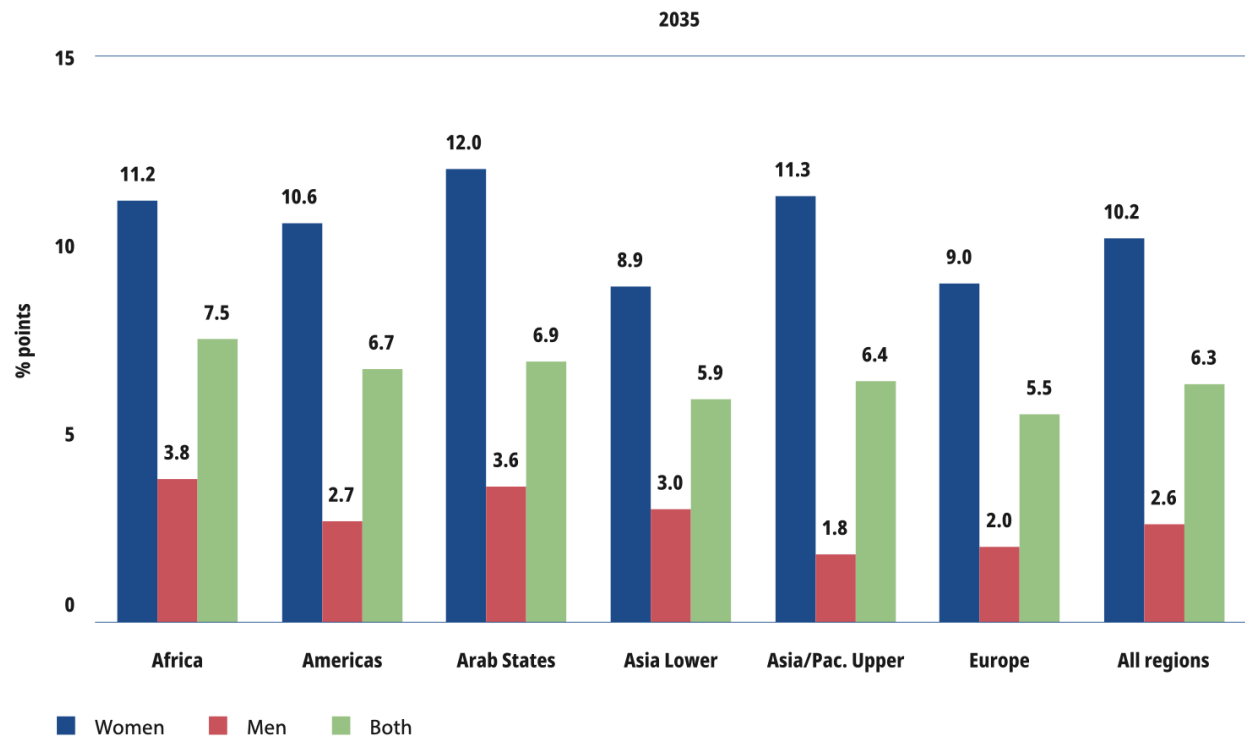
Source: Authors' compilation of data based on ILO, 2018: appendix table A.3.6 on percentages of inactive persons, by sex and main reason for being outside the labour force.

The Care Economy – It’s Time to Invest!

Total employment creation from investment in care services in 82 countries throughout the life cycle, 2030 and 2035



Changes in employment-to-population ratios (ages 15–64) by gender, 2035



De Henau (2022). “Asia Lower” stands for lower-middle- and low-income countries in Asia (including Kyrgyzstan); “Asia/Pac. Upper” stands for upper-middle- and high-income countries in Asia and the Pacific (including Kazakhstan); Europe includes Russian Federation, Turkey and Israel. Arab States comprises only Saudi Arabia.

Thank you