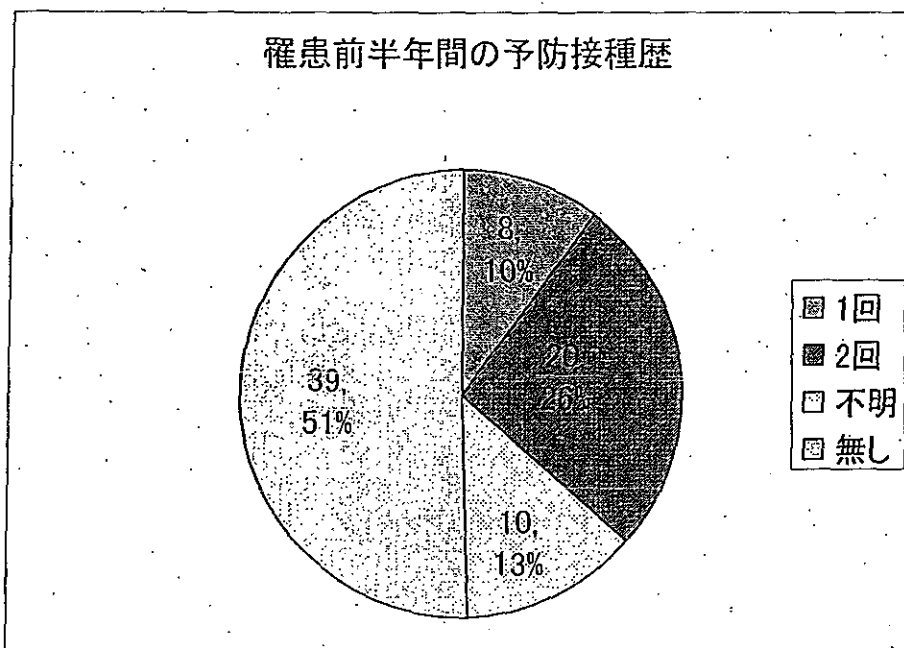


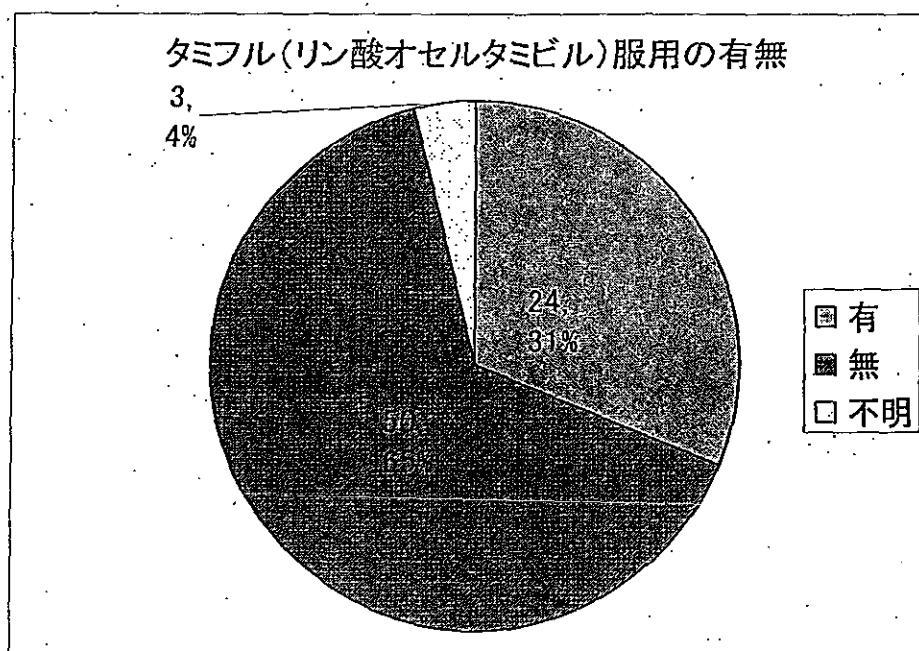
図18.罹患前半半年間の予防接種歴

n=77



29

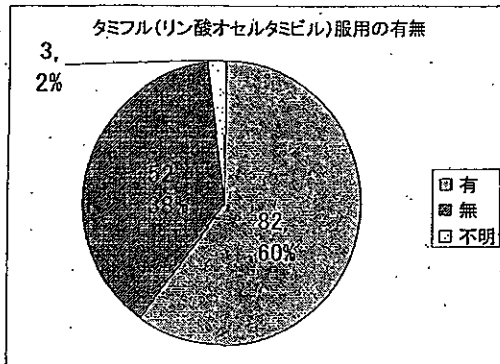
図19.タミフル（リン酸オセルタミビル）服用の有無n=77



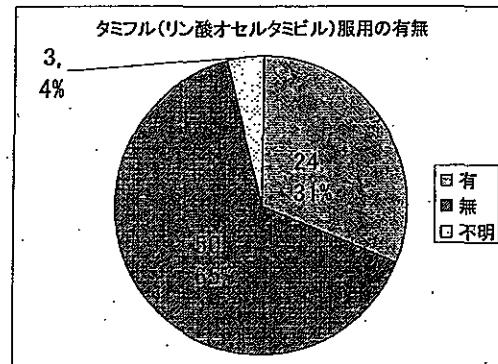
30

図20. 昨シーズンとの比較

2006/2007

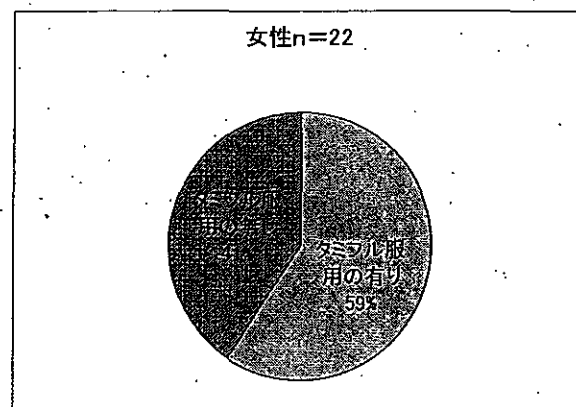
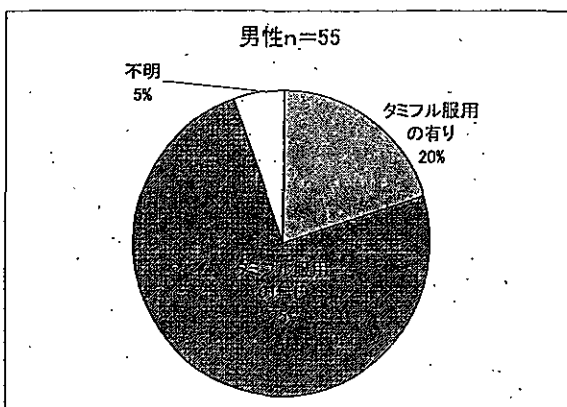


2007/2008



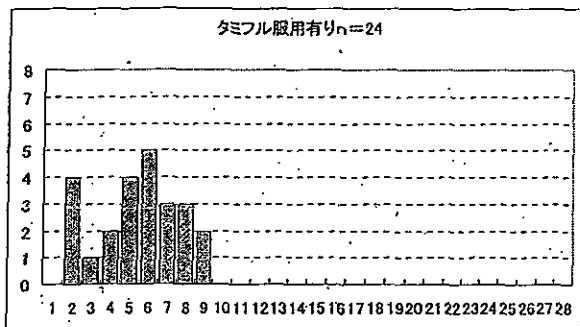
31

図21. タミフル (リン酸オセルタミビル) 服用の有無の性別

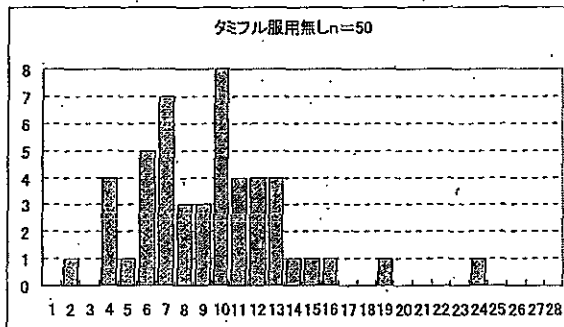


32

図22.タミフル（リン酸オセルタミビル）服用の有無の年齢別



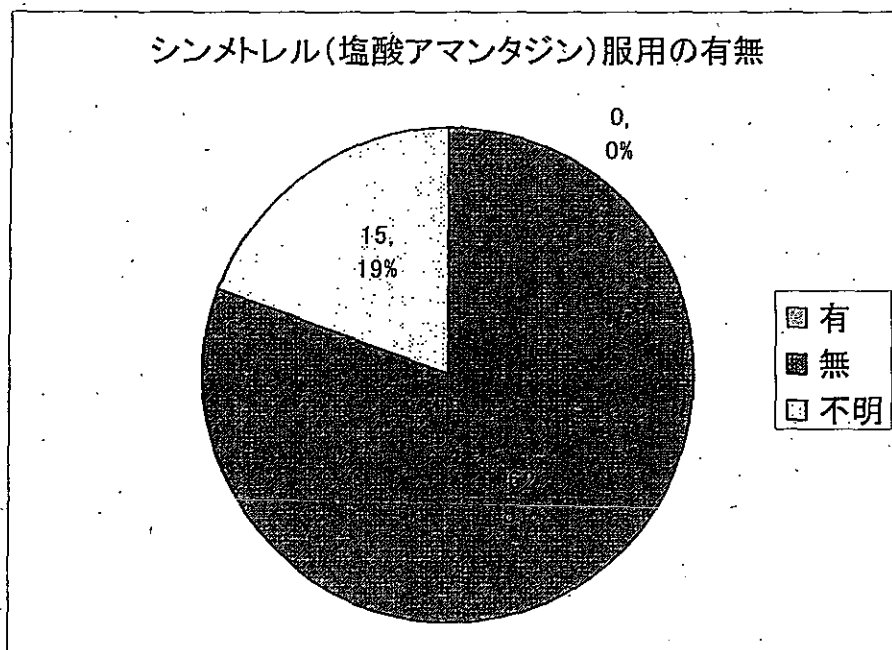
平均値5.5
中央値6



平均値9.88
中央値10

33

図23.シンメトレル（塩酸アマンタジン）服用の有無n=77

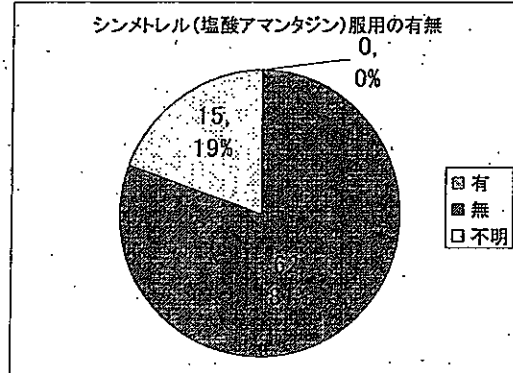
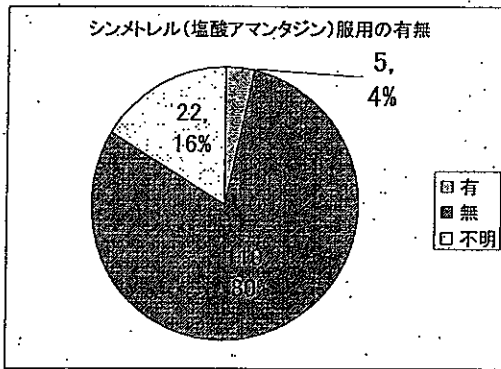


34

図24.昨シーズンとの比較

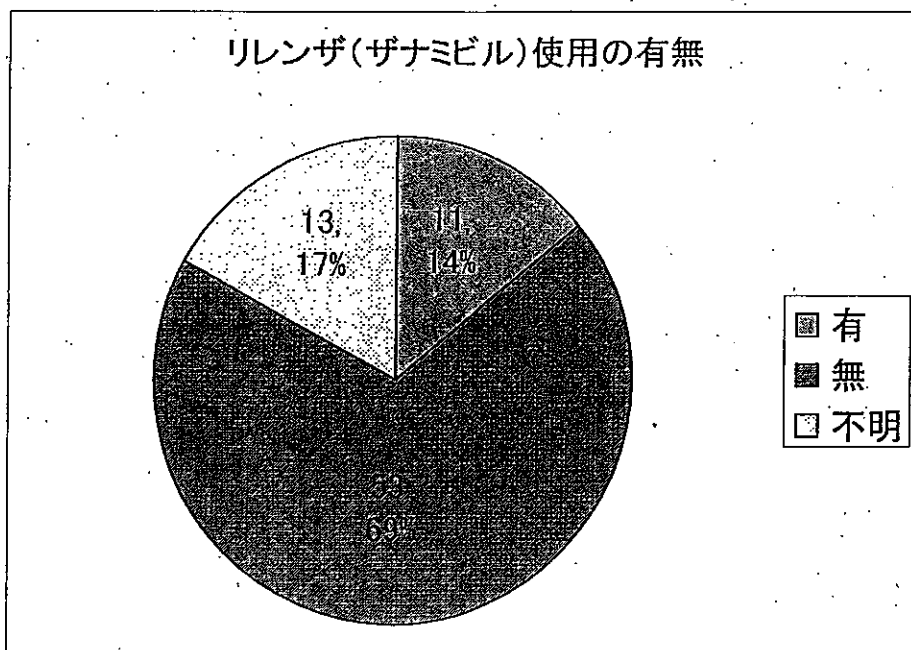
2006/2007

2007/2008



35

図25.リレンザ(ザナミビル)使用の有無n=77

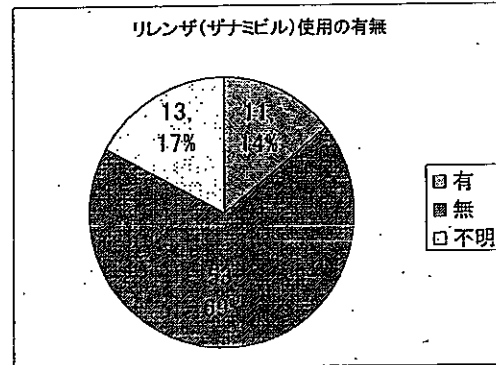
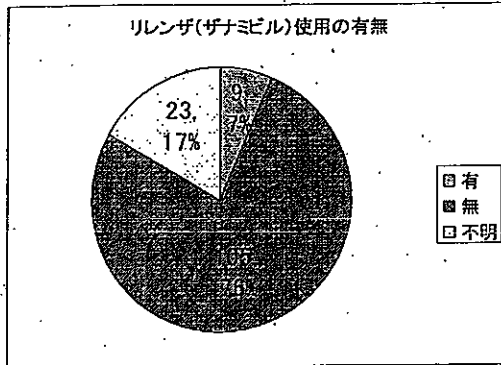


36

図26. 昨シーズンとの比較

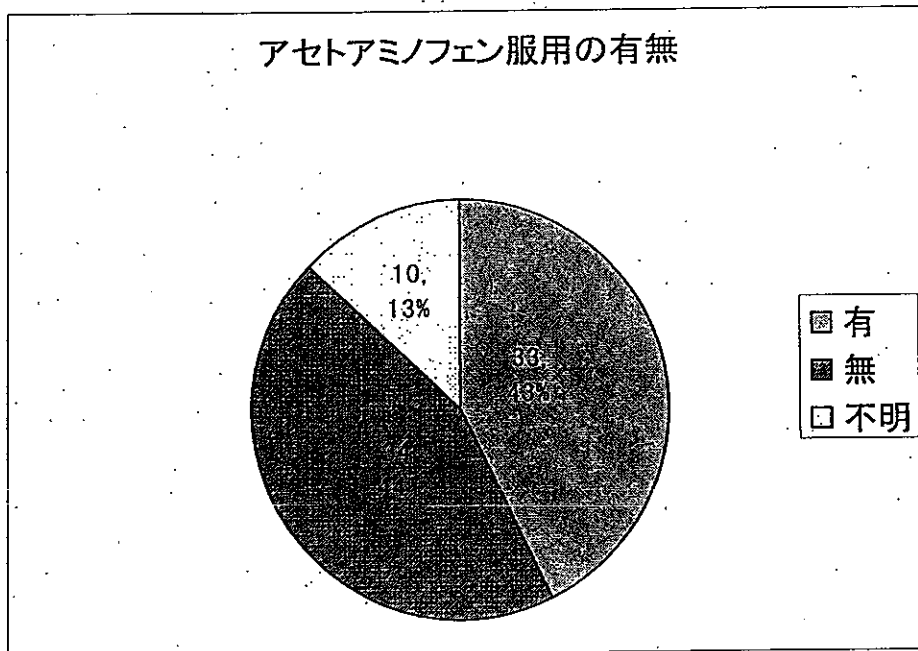
2006/2007

2007/2008



37

図27. アセトアミノフェン服用の有無 n=77

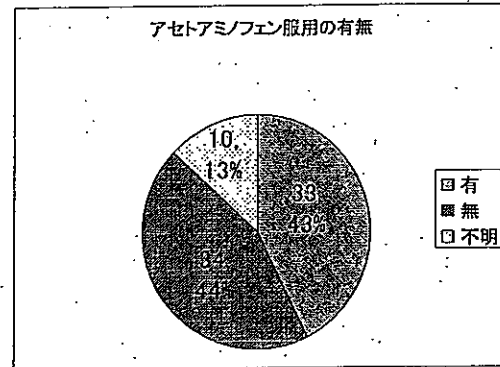
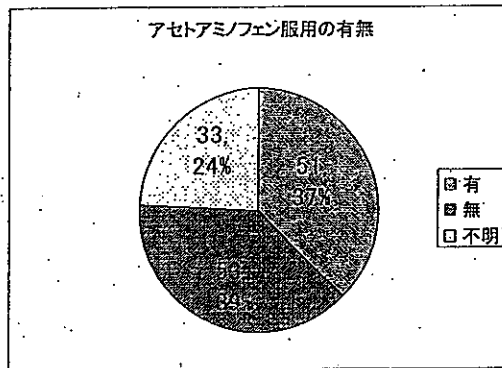


38

図28.昨シーズンとの比較

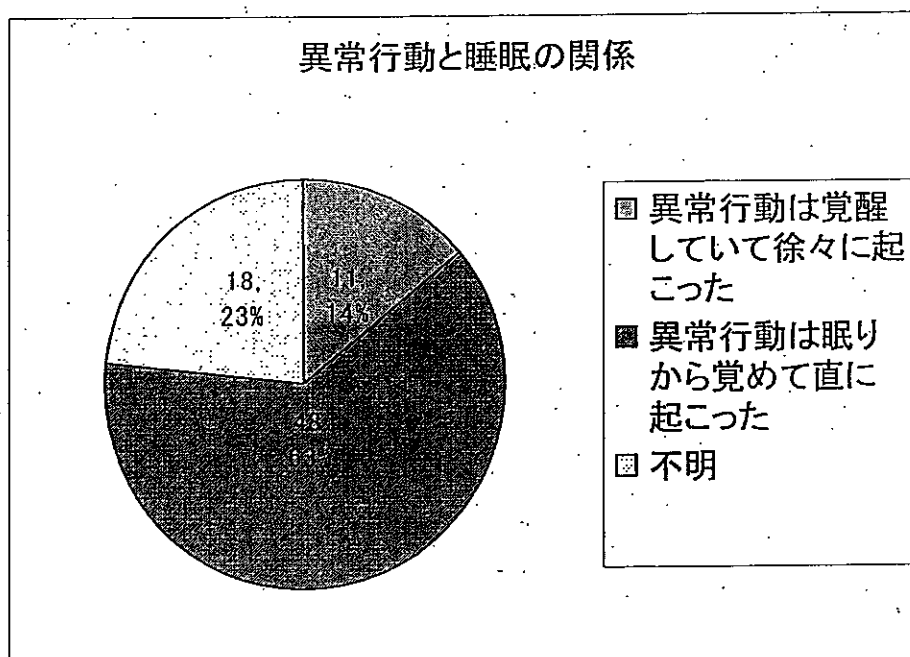
2006/2007

2007/2008



39

図29.異常行動と睡眠の関係n=77

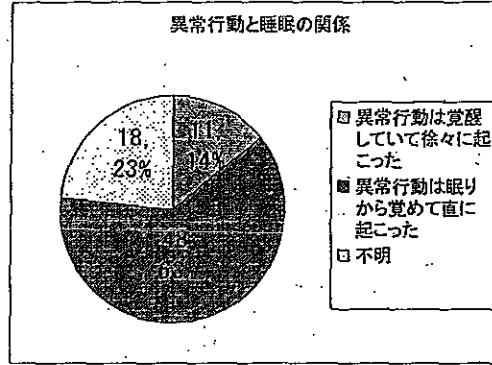
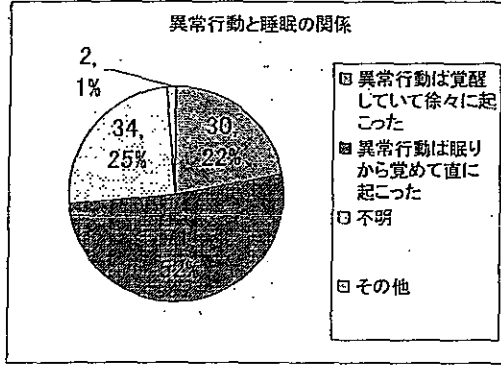


40

図30.昨シーズンとの比較

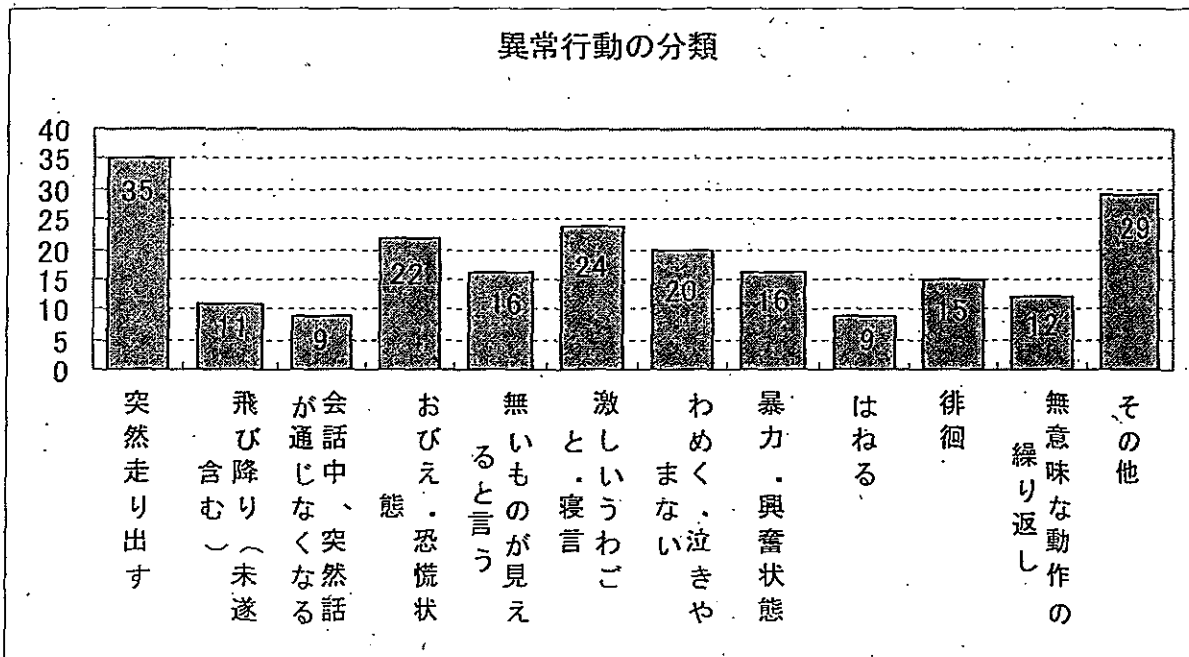
2006/2007

2007/2008



41

図31.異常行動の分類 (複数回答)

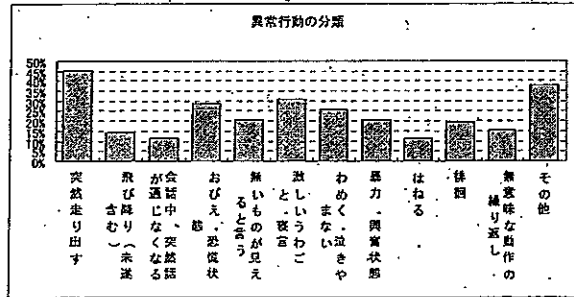
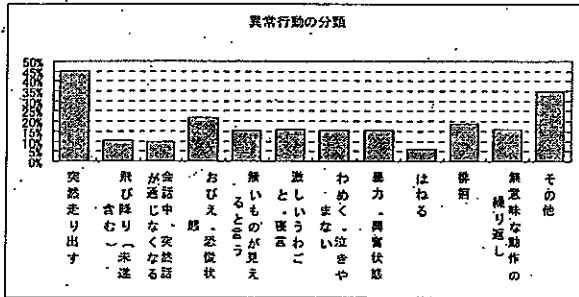


42

図32.昨シーズンとの比較

2006/2007

2007/2008

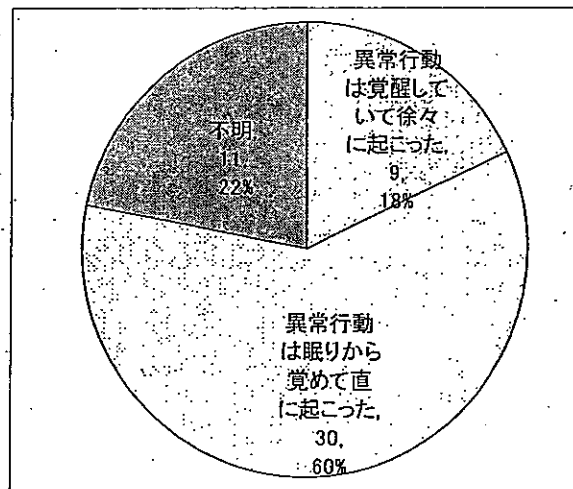
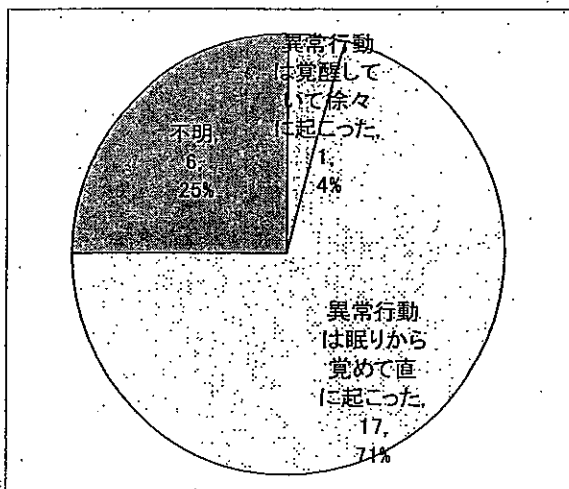


43

図33.タミフル有無と異常行動と睡眠の関係

タミフル服用有り群

タミフル服用無し群

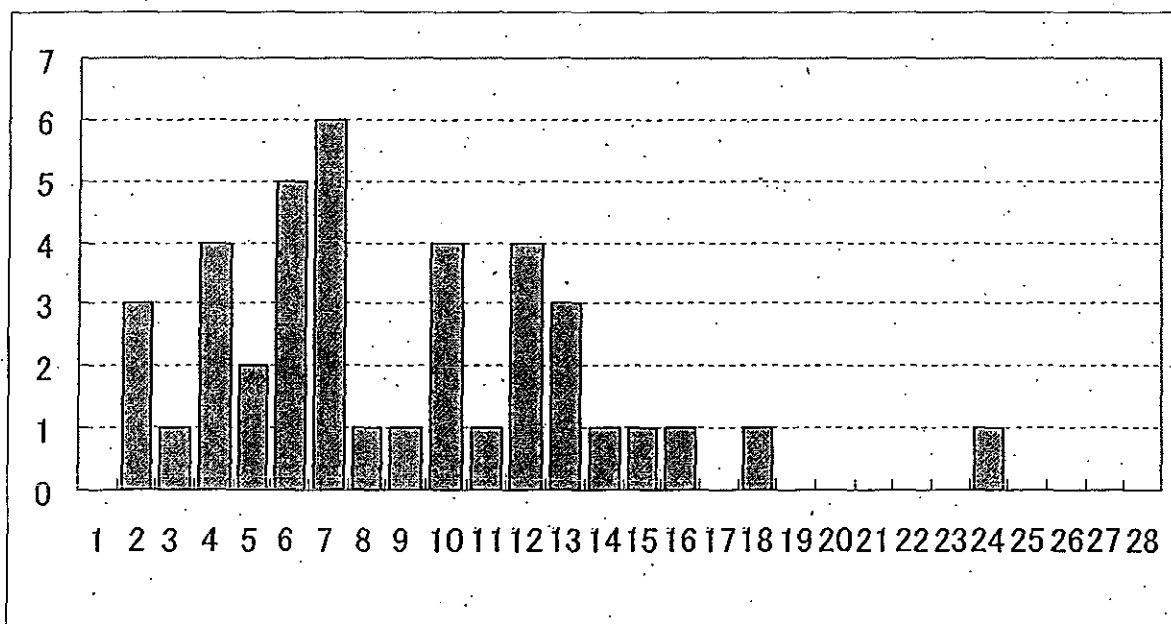


44

突然走り出す・飛び降りのみ の分析

45

図34.患者の年齢n=41



平均値9.21
中央値7

46