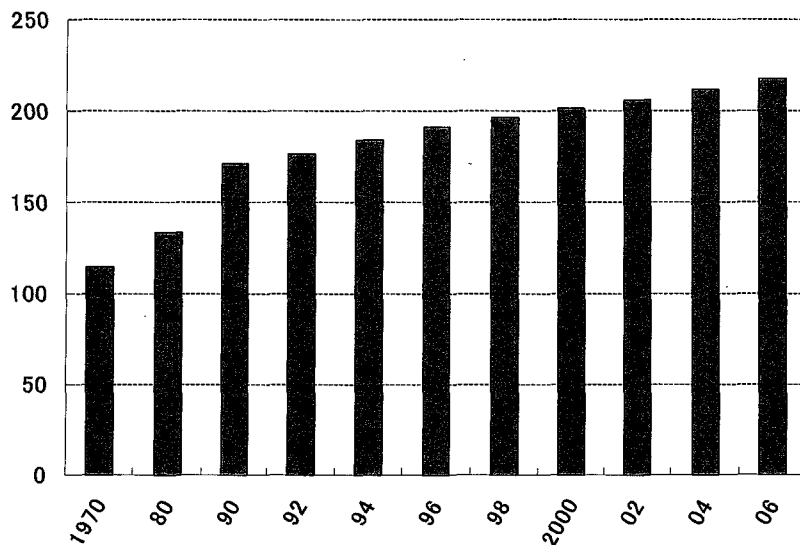
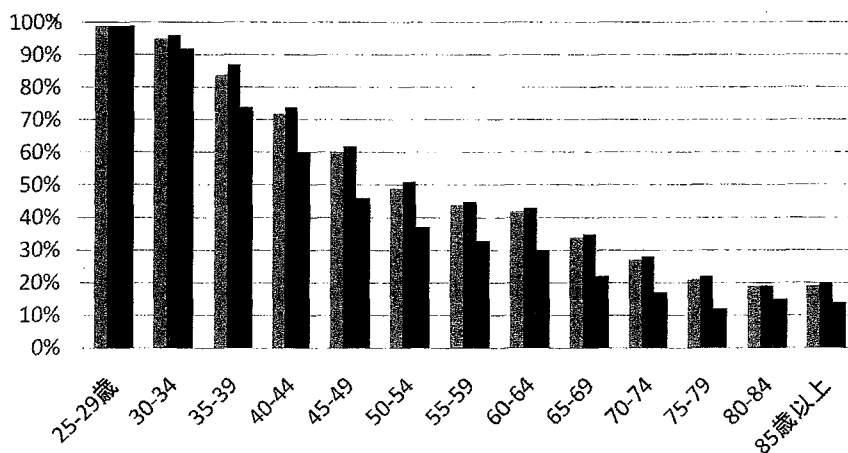


人口10万対医師数の推移

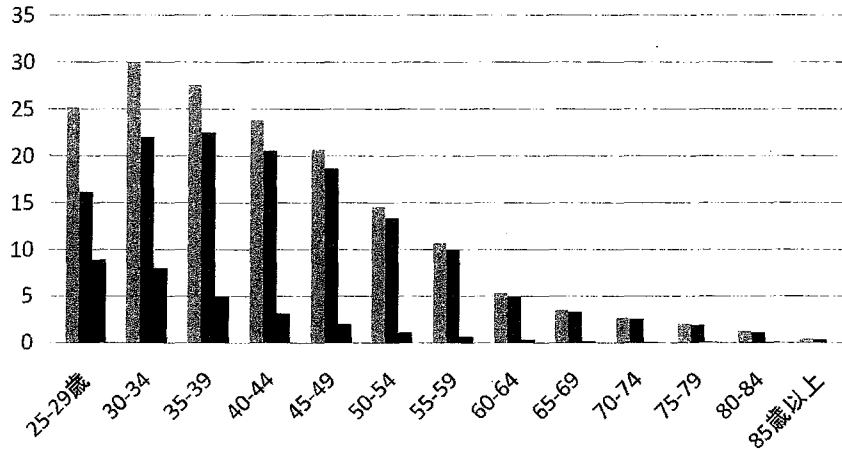


年齢階層別病院勤務医比率



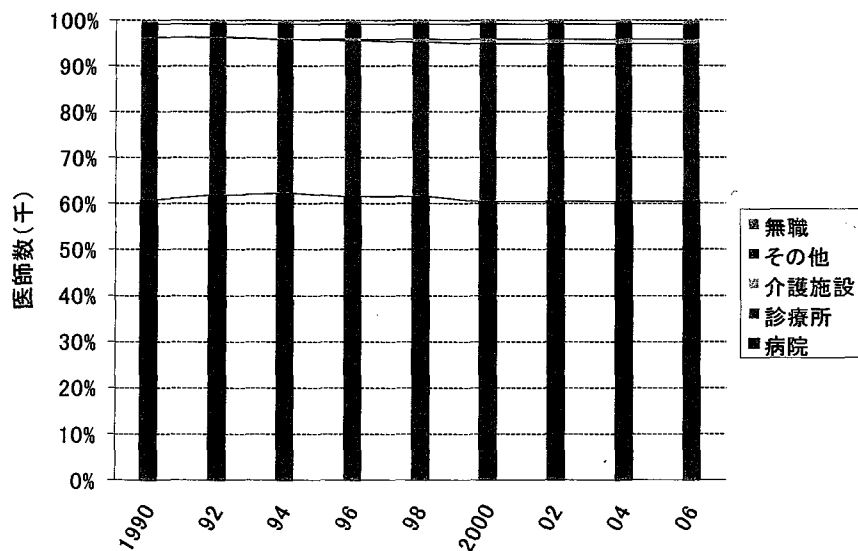
(平成18年医師・歯科医師・薬剤師調査)

病院勤務医師の年齢分布(千人)



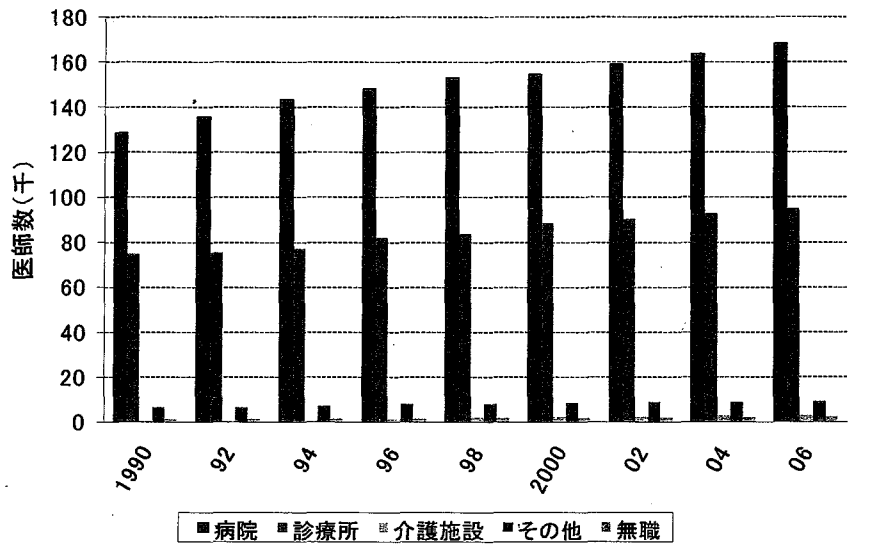
(平成18年医師・歯科医師・薬剤師調査)

業務種別医師数割合の推移



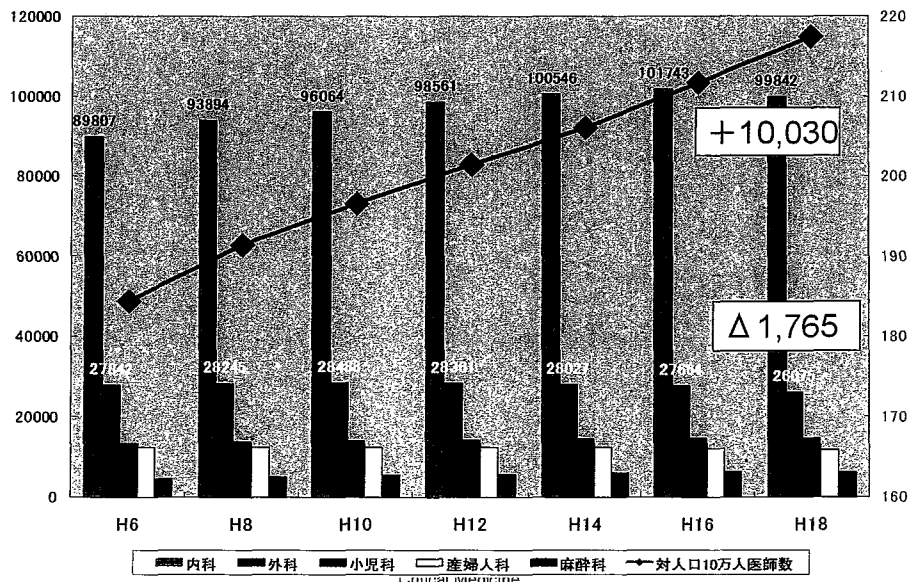
(平成18年医師・歯科医師・薬剤師調査)

業務種別医師数の推移

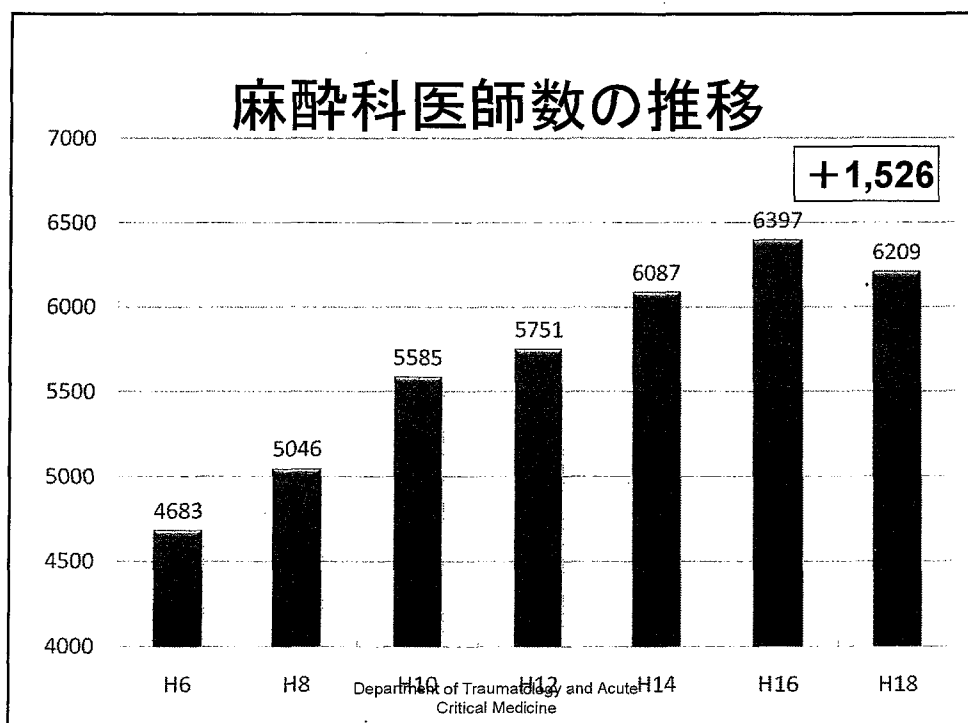
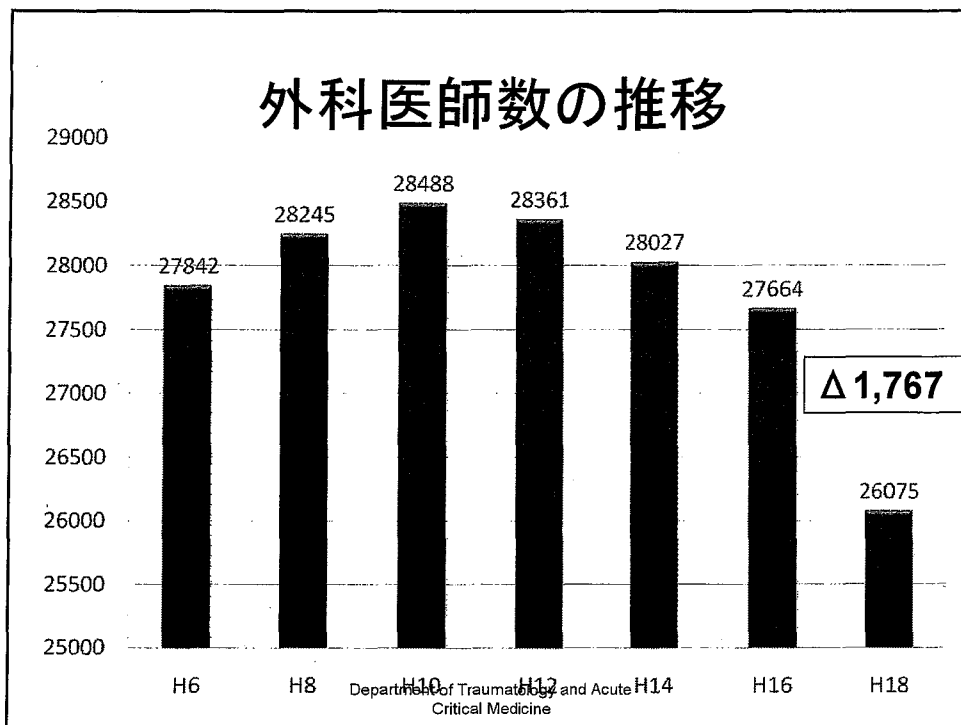


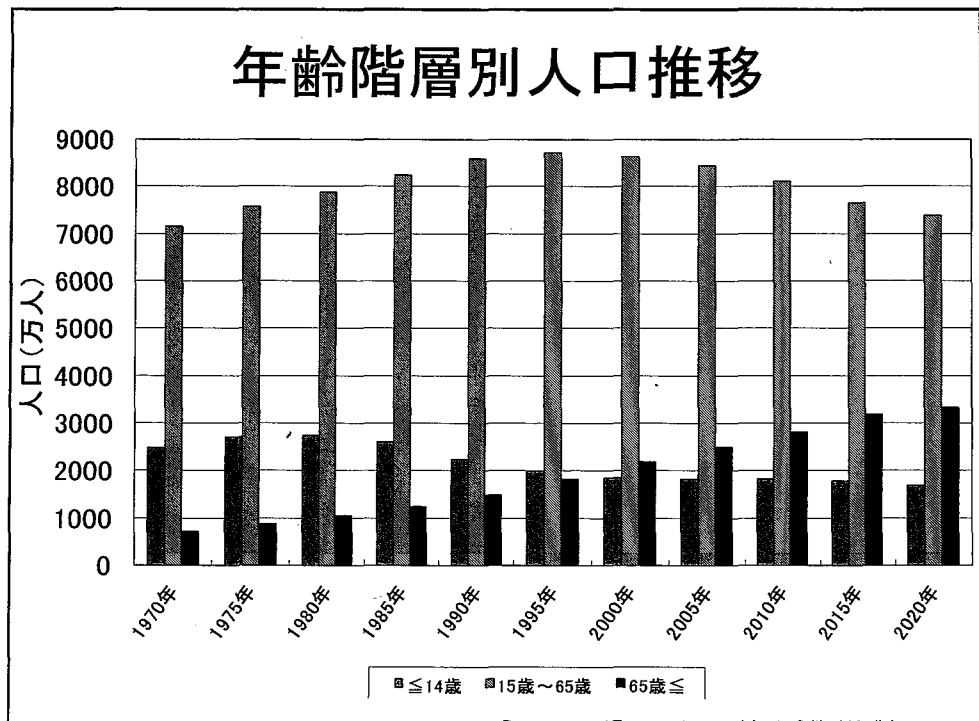
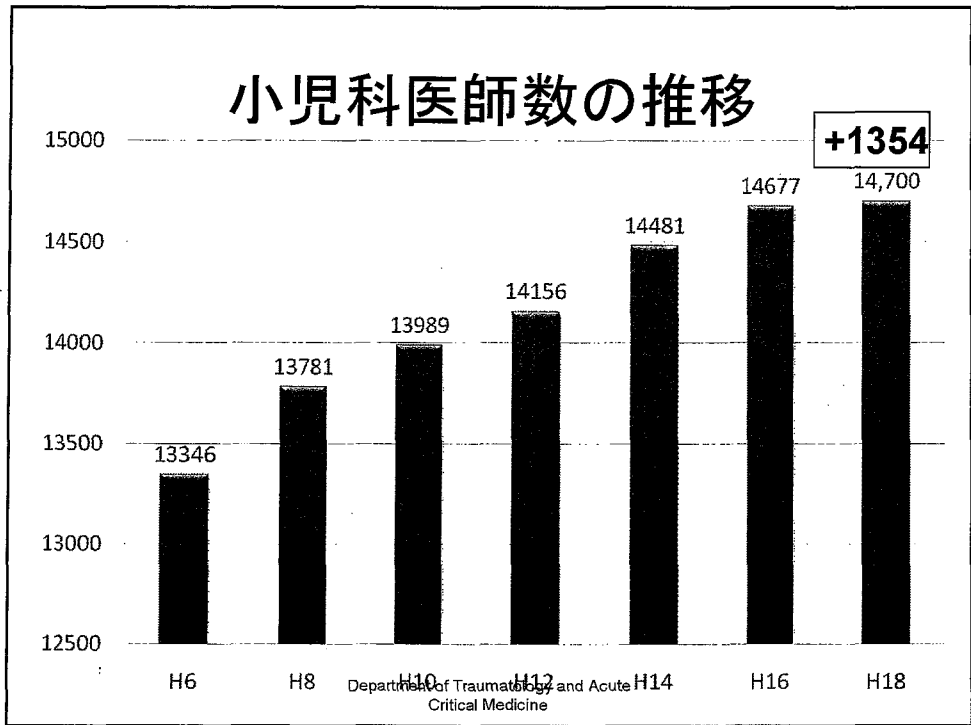
Critical Medicine (平成18年医師・歯科医師・薬剤師調査)

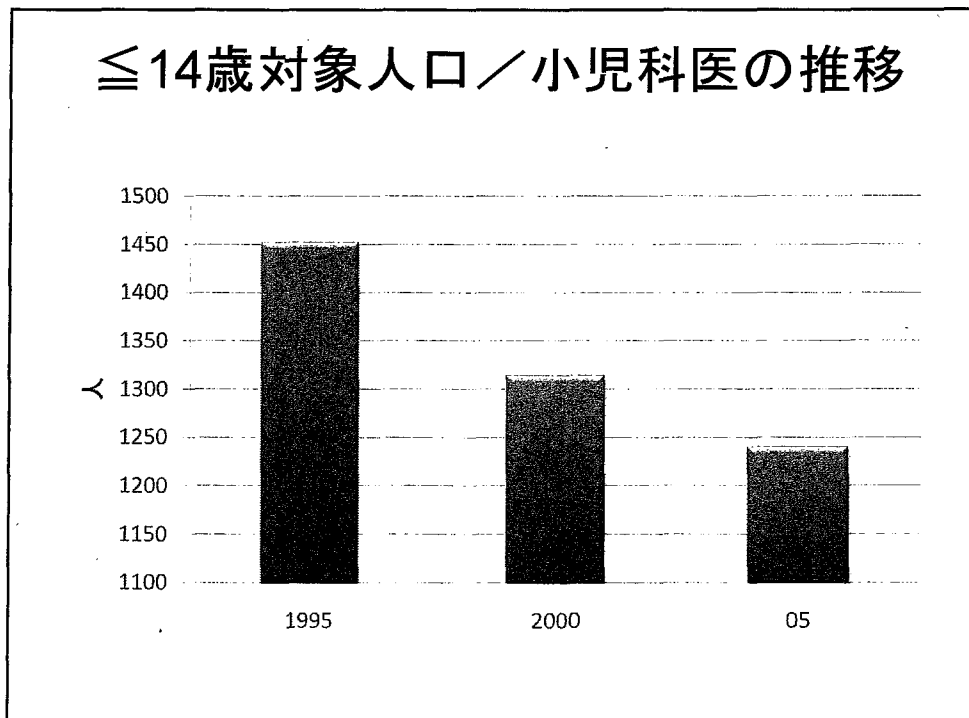
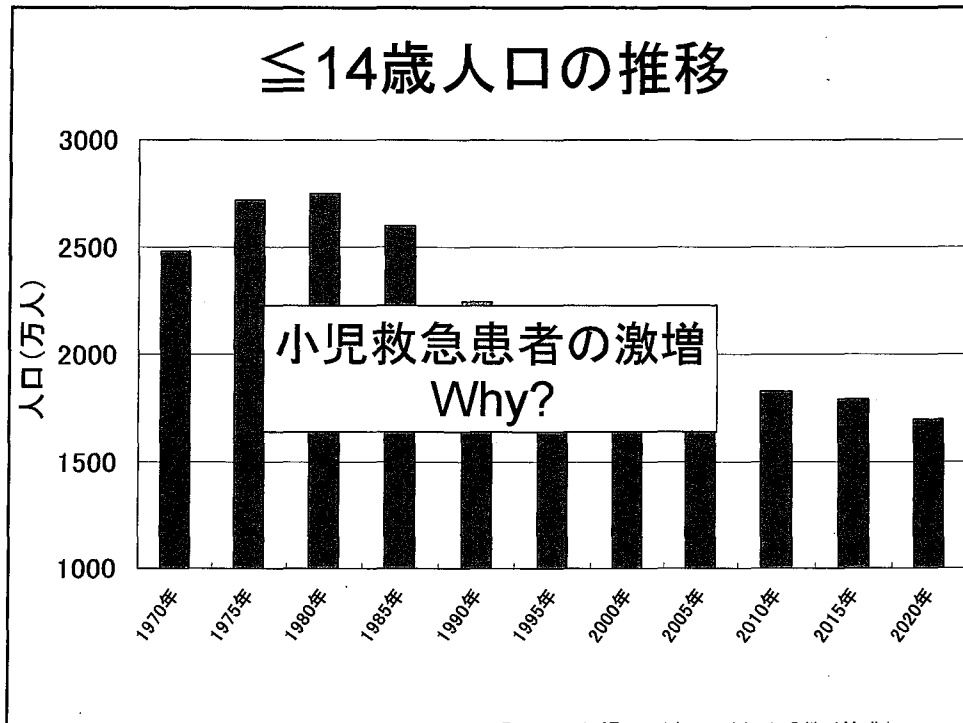
医師数の推移

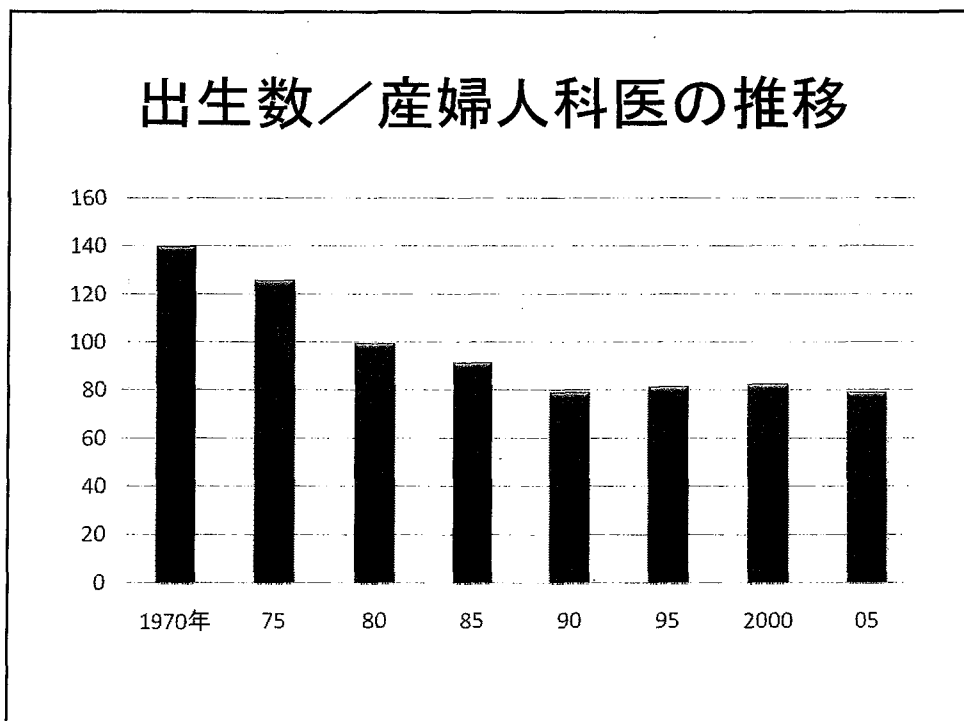
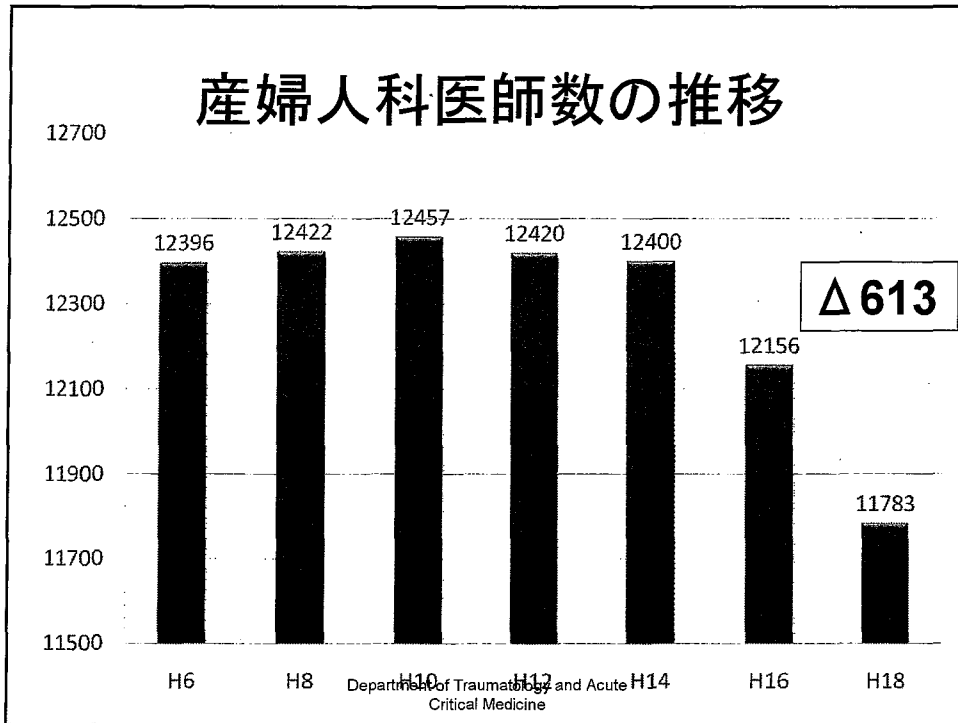


Critical Medicine

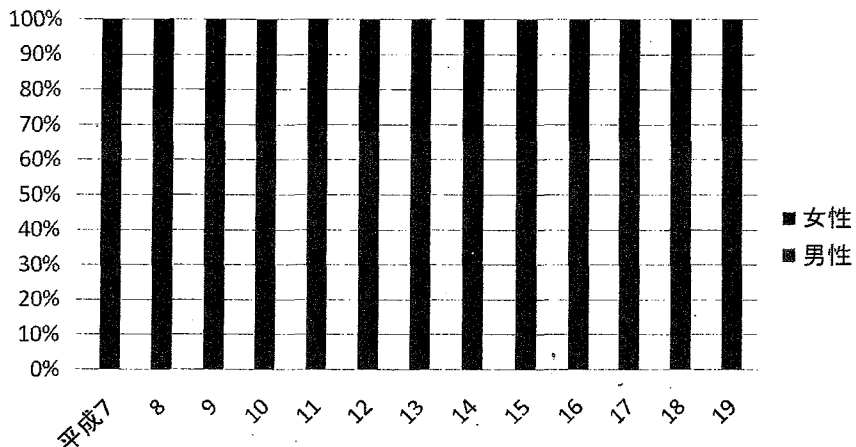




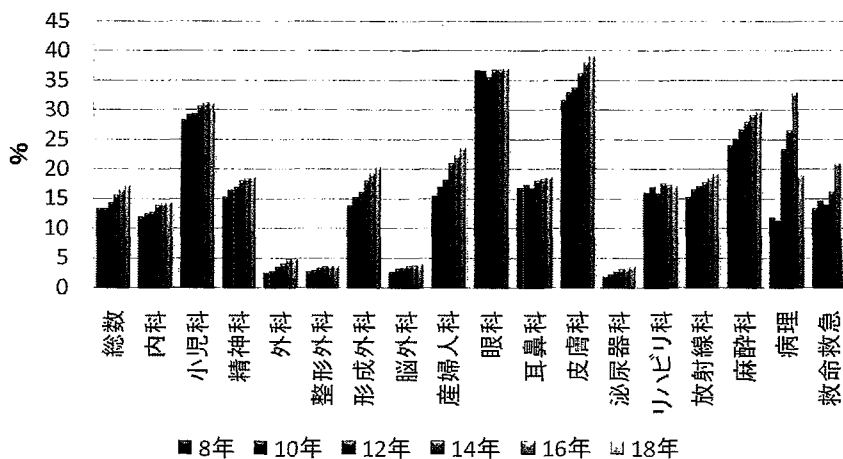




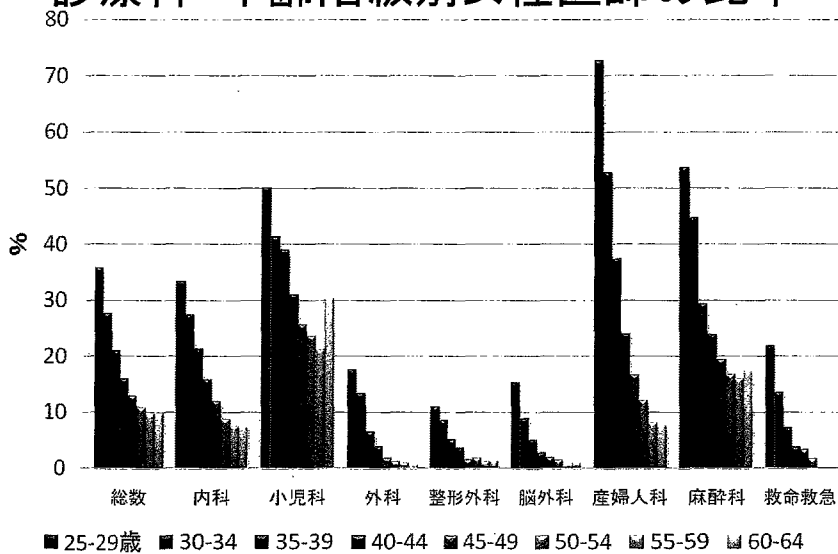
医師国家試験合格者の男女比の推移



診療科別女性医師の割合の推移 (%)

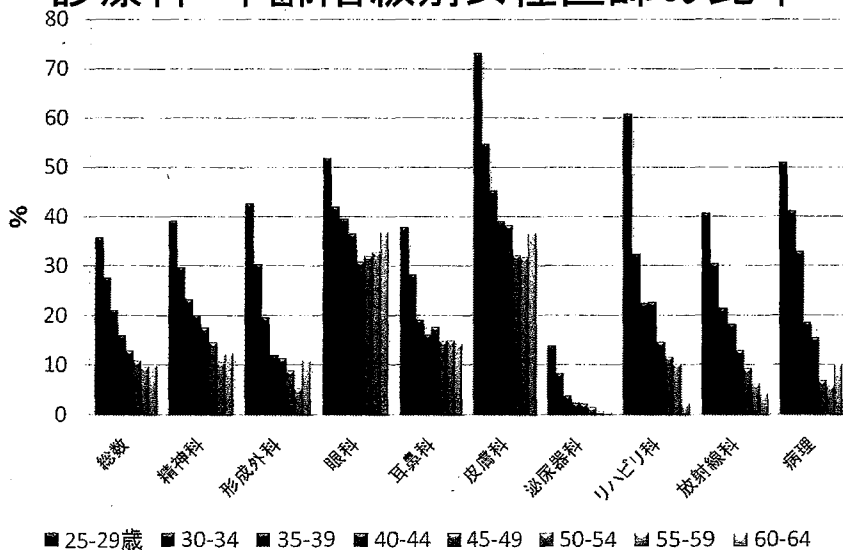


診療科・年齢階級別女性医師の比率



(平成18年医師・歯科医師・薬剤師調査)

診療科・年齢階級別女性医師の比率



(平成18年医師・歯科医師・薬剤師調査)