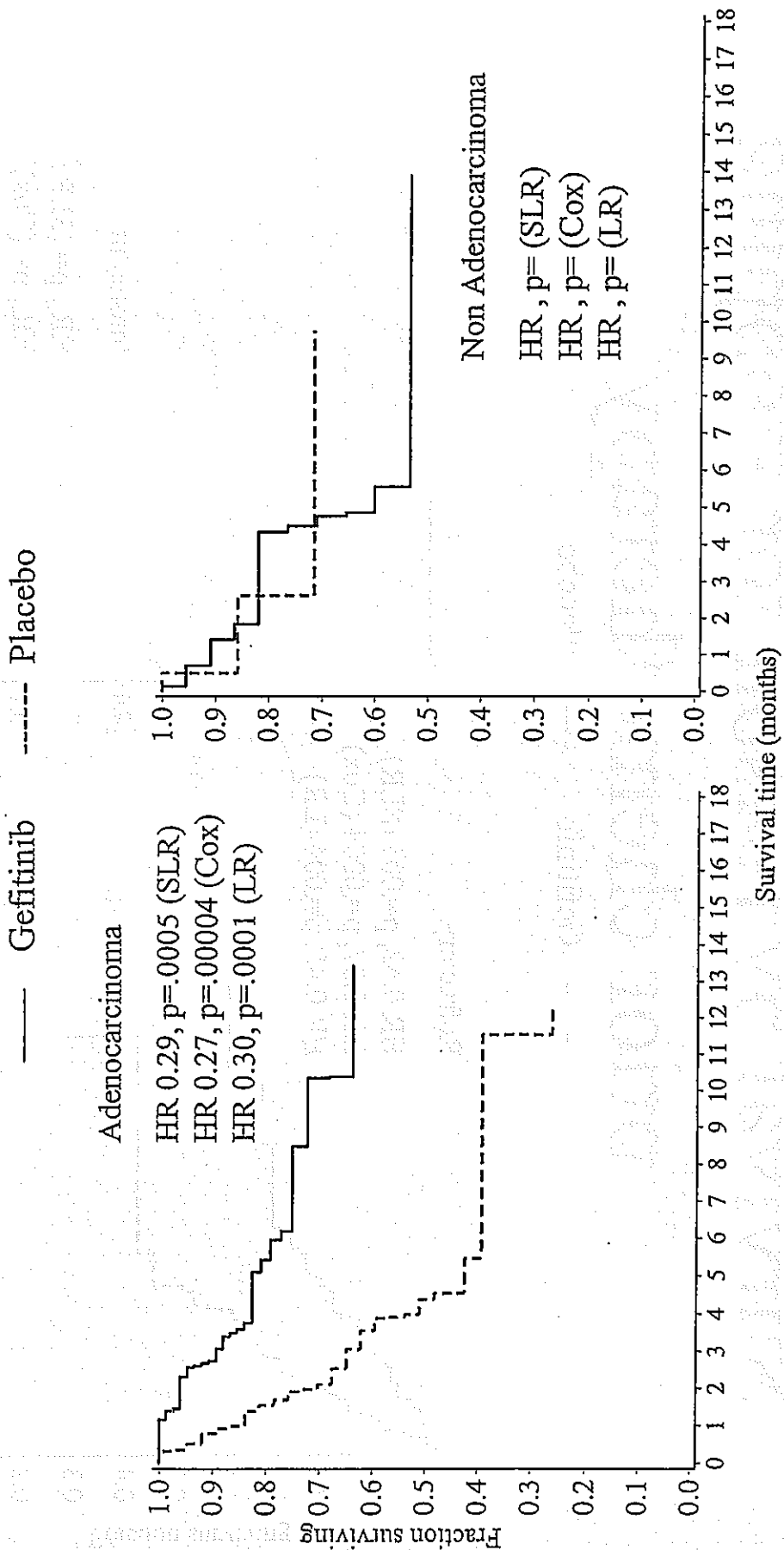


Oriental Non-smoker

Survival according to histology

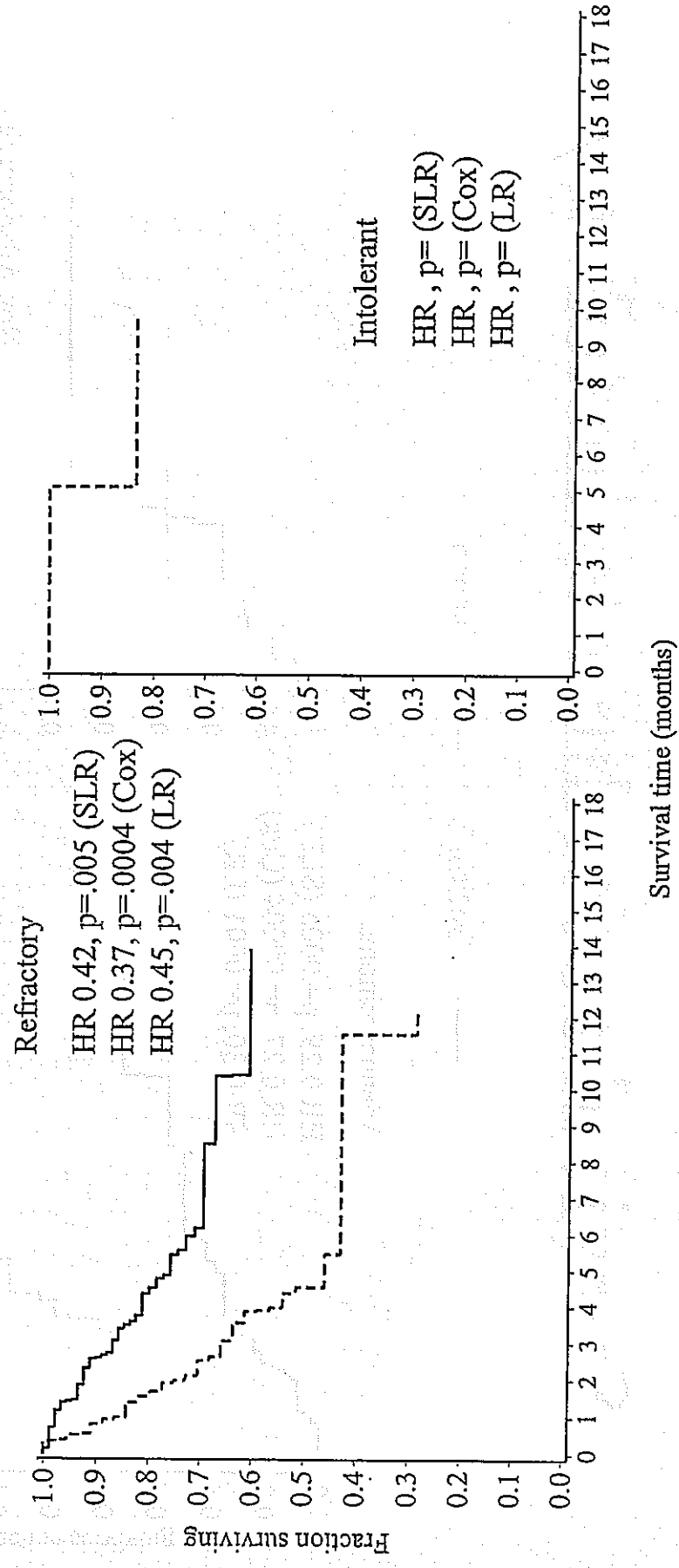


. = too few events (<20) for a meaningful analysis (central limit theorem breakdown)

Oriental Non-smoker

Survival by reason for stopping prior chemotherapy

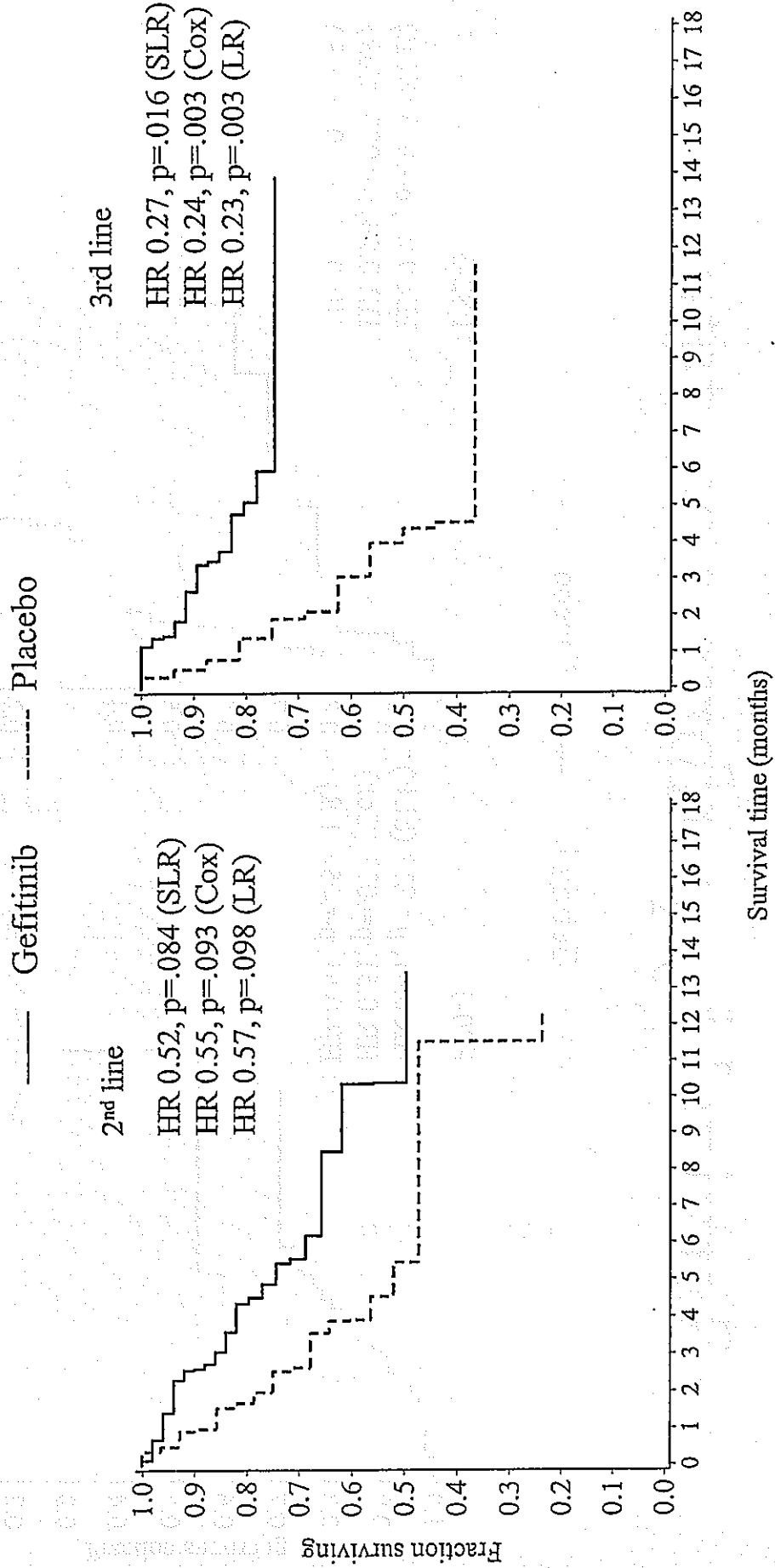
— Gefitinib - - - - Placebo



. = too few events (<20) for a meaningful analysis (central limit theorem breakdown)

Oriental Non-smoker

Survival by line of therapy



Oriental Non-smoker

Survival by performance status

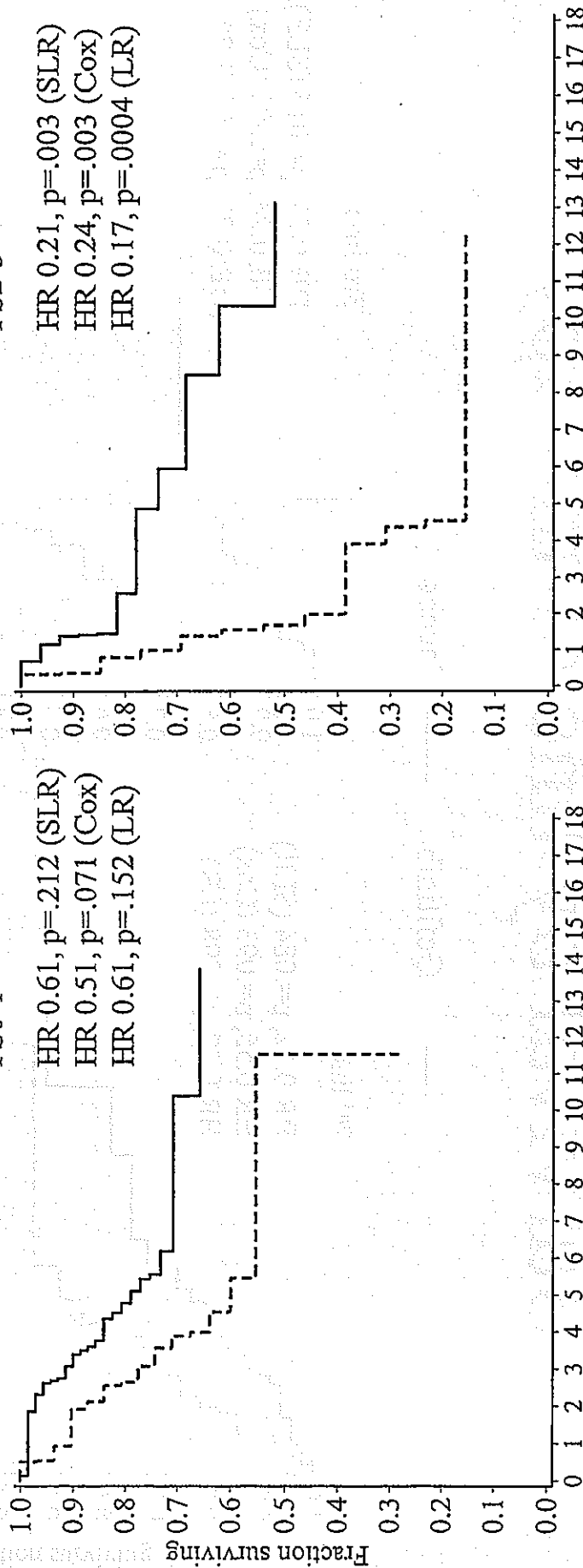
— Gefitinib - - - - Placebo

PS0-1

HR 0.61, p=.212 (SLR)
HR 0.51, p=.071 (Cox)
HR 0.61, p=.152 (LR)

PS2-3

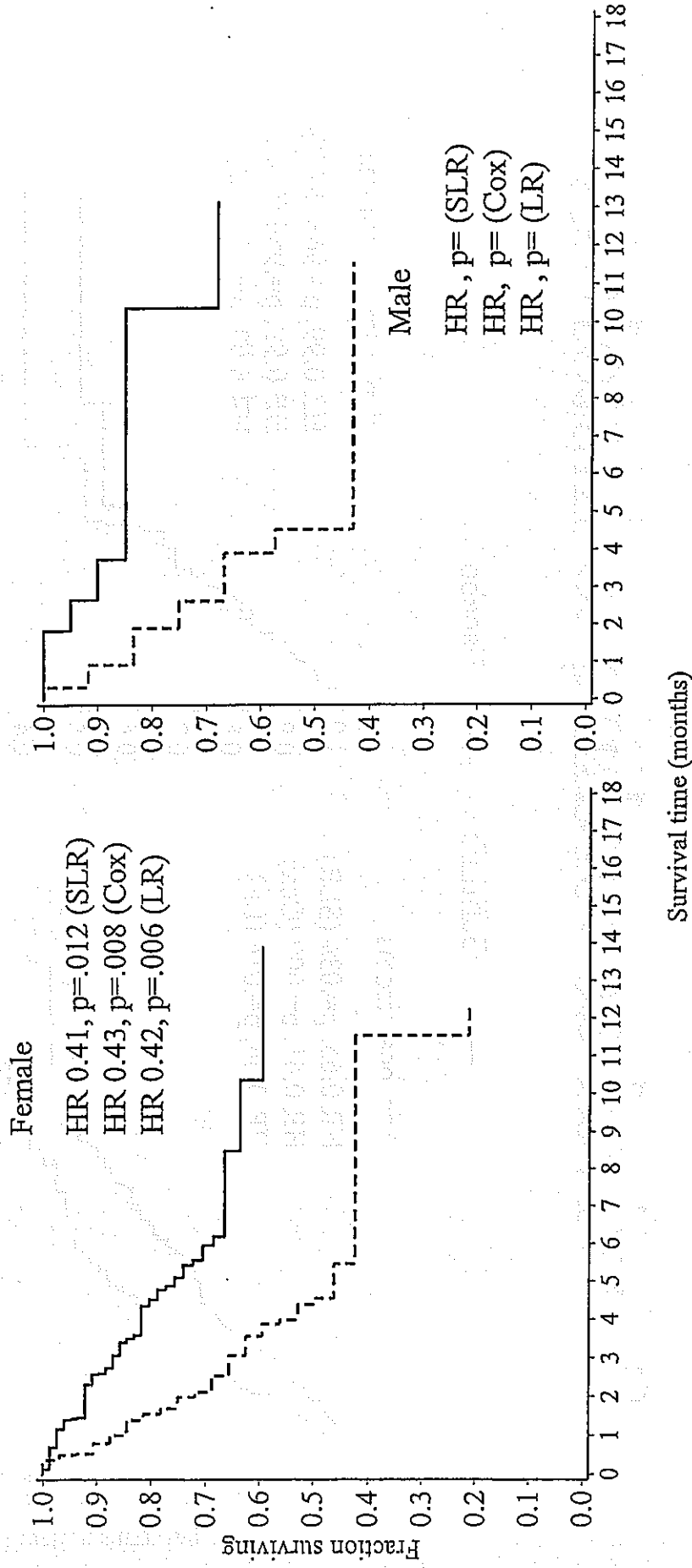
HR 0.21, p=.003 (SLR)
HR 0.24, p=.003 (Cox)
HR 0.17, p=.0004 (LR)



Oriental Non-smoker

Survival by gender

— Gefitinib - - - - Placebo



.. = too few events (<20) for a meaningful analysis (central limit theorem breakdown)

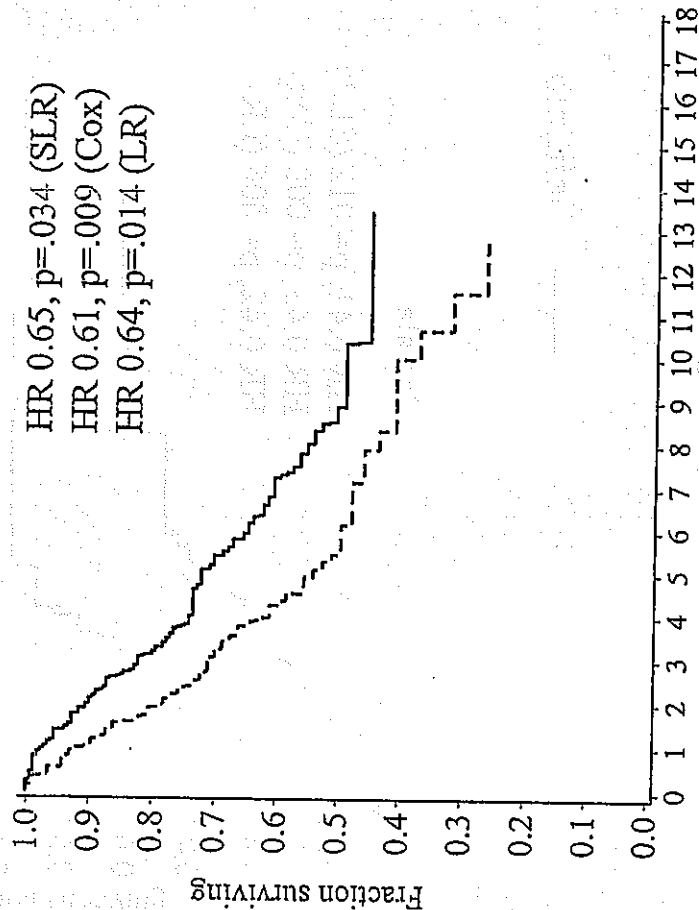
Non-Smoker

Survival according to histology

— Gefitinib - - - - - Placebo

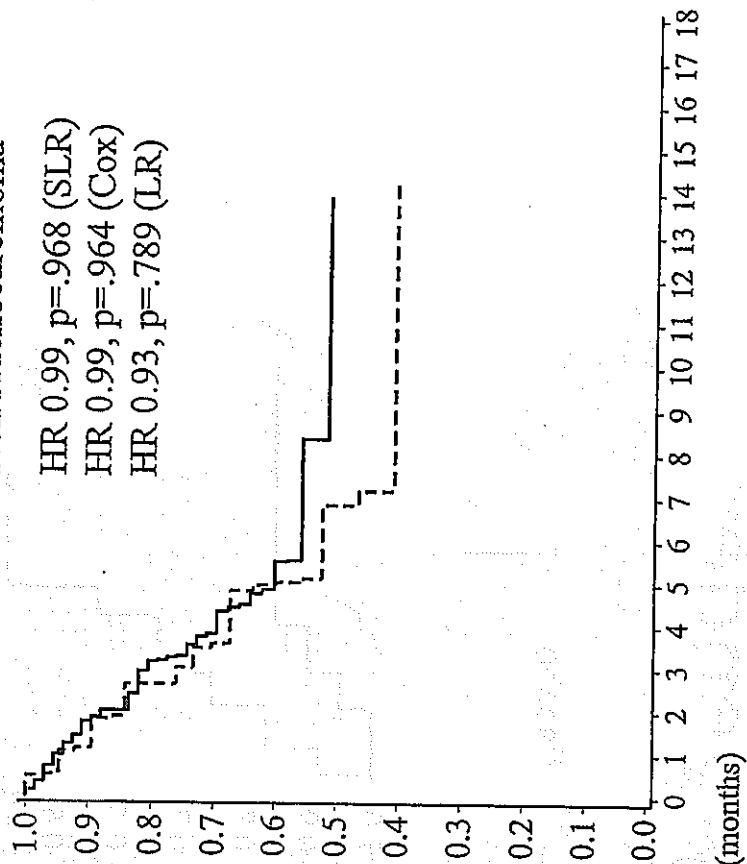
Adenocarcinoma

HR 0.65, p=.034 (SLR)
HR 0.61, p=.009 (Cox)
HR 0.64, p=.014 (LR)



Non Adenocarcinoma

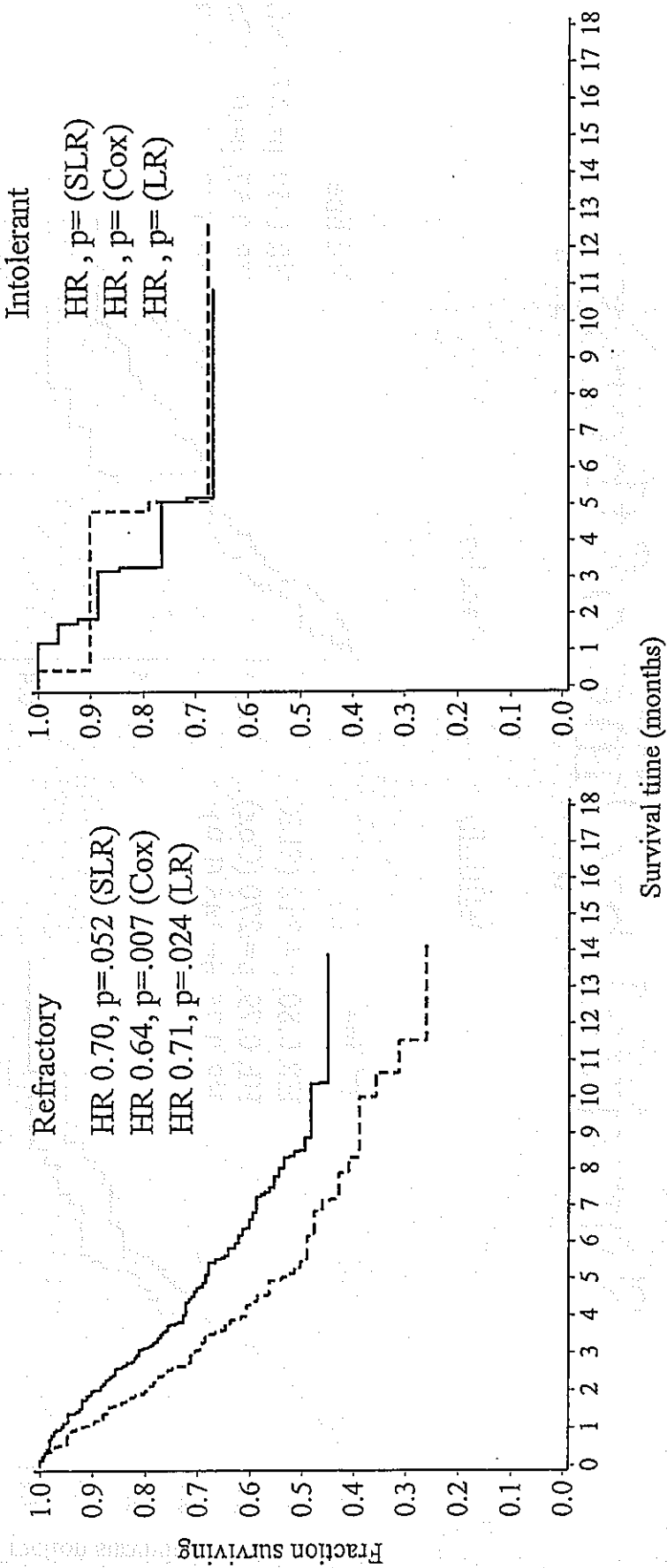
HR 0.99, p=.968 (SLR)
HR 0.99, p=.964 (Cox)
HR 0.93, p=.789 (LR)



Non-Smoker

Survival by reason for stopping prior chemotherapy

— Gefitinib - - - - Placebo

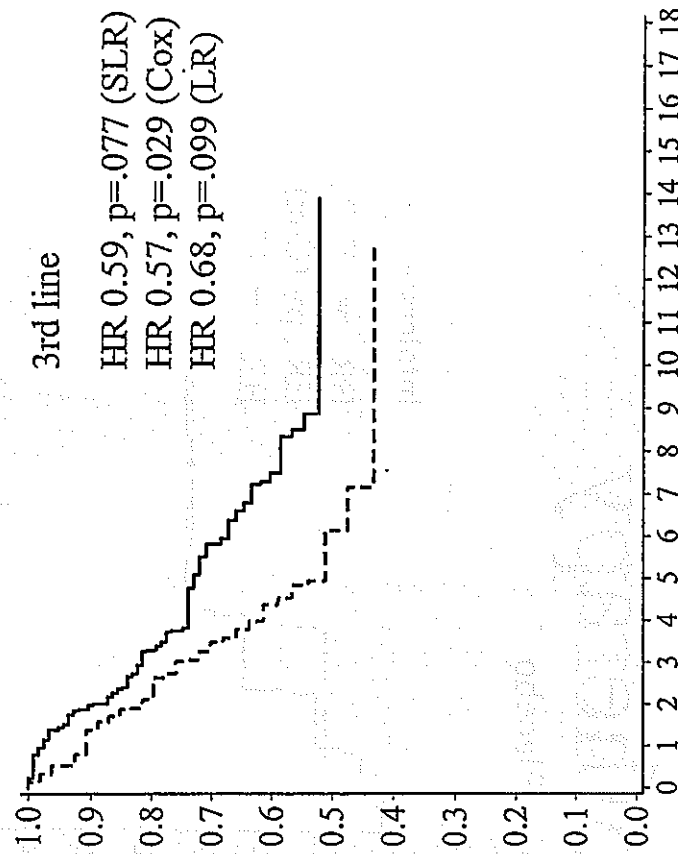
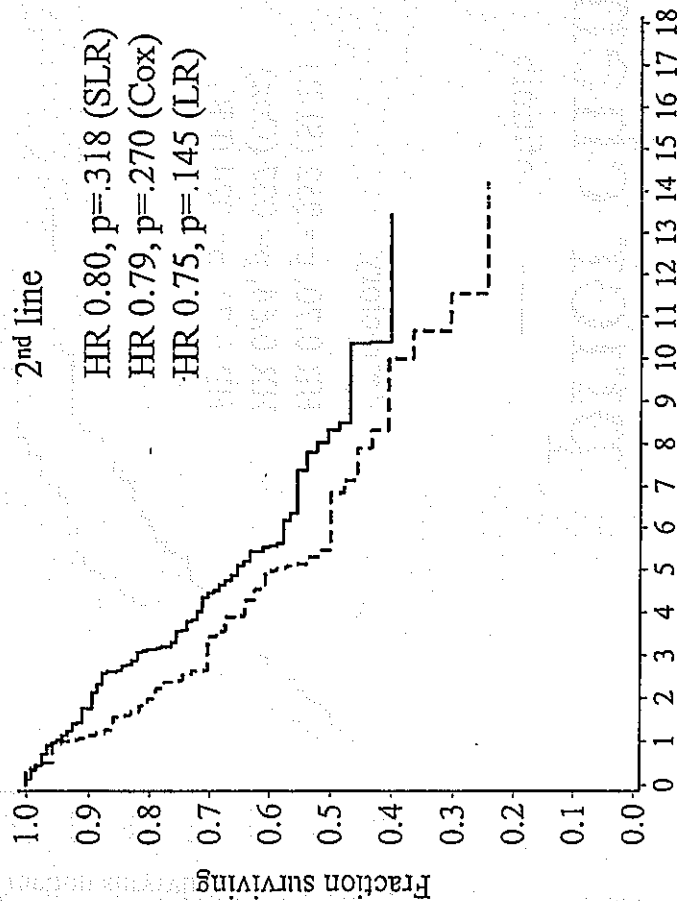


: = too few events (<20) for a meaningful analysis (central limit theorem breakdown)

Non-Smoker

Survival by line of therapy

— Gefitinib - - - - Placebo

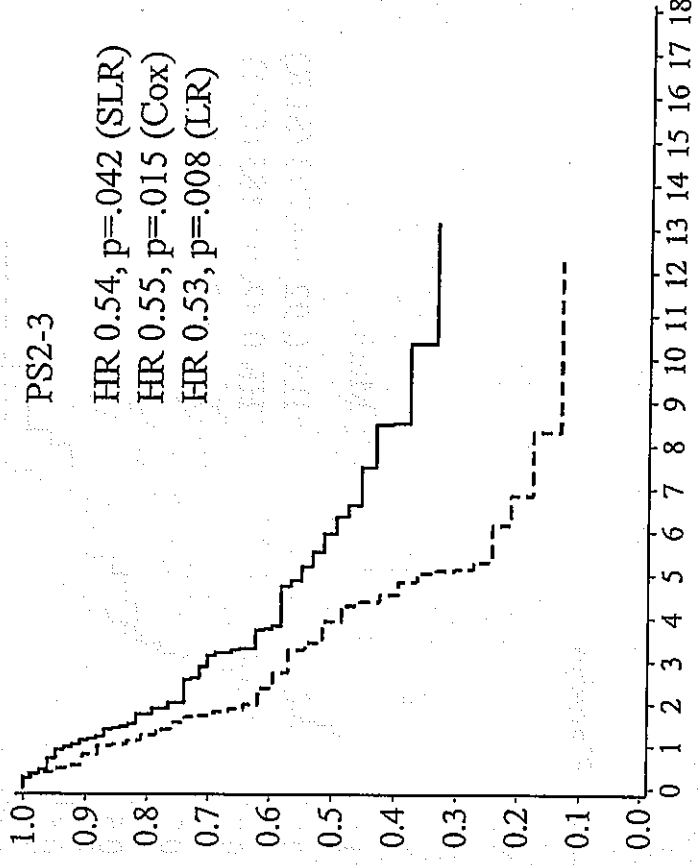
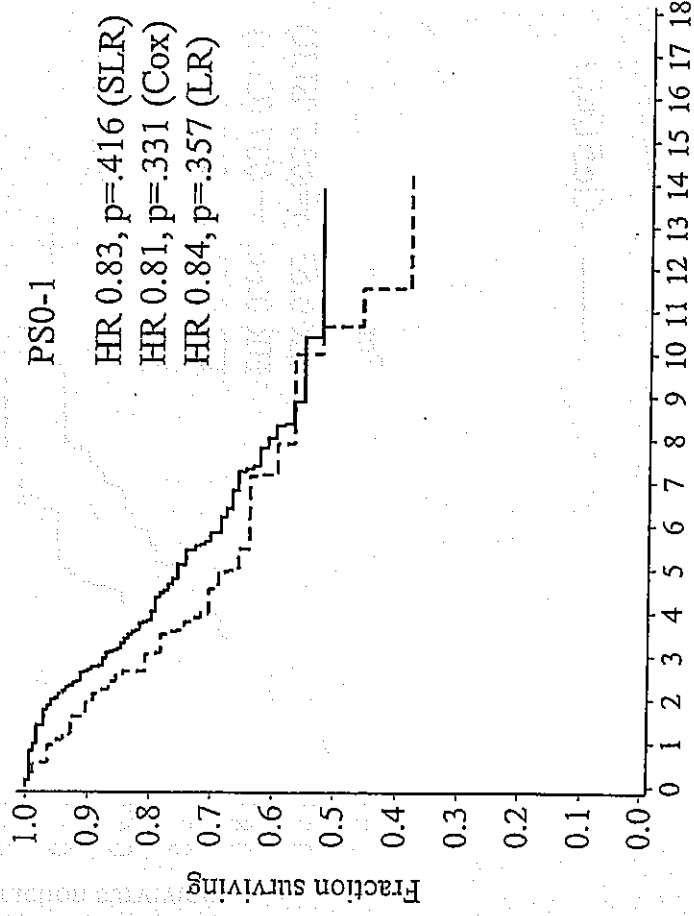


Survival time (months)

Non-Smoker

Survival by performance status

— Gefitinib - - - - - Placebo

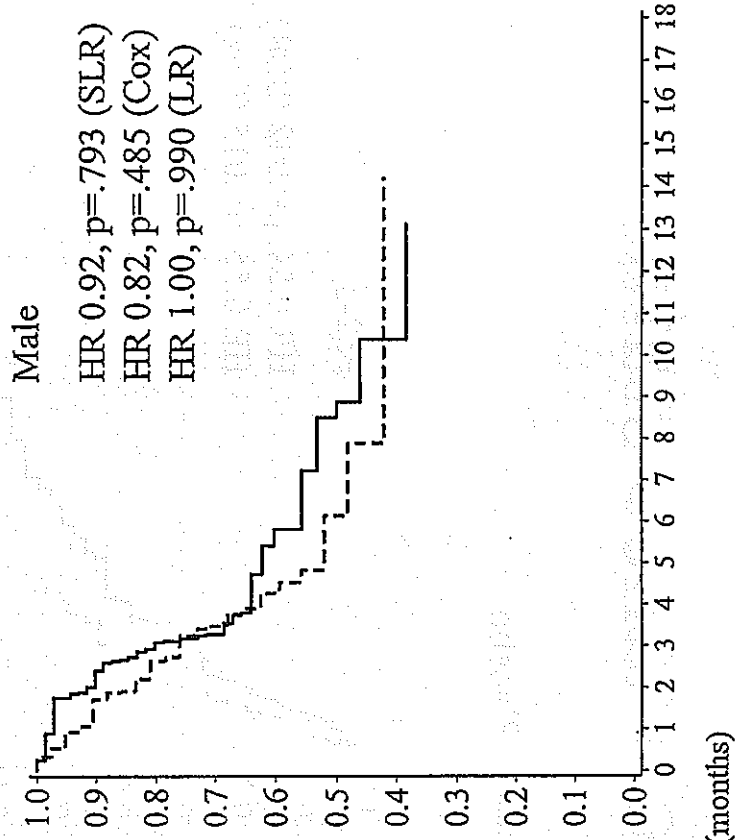
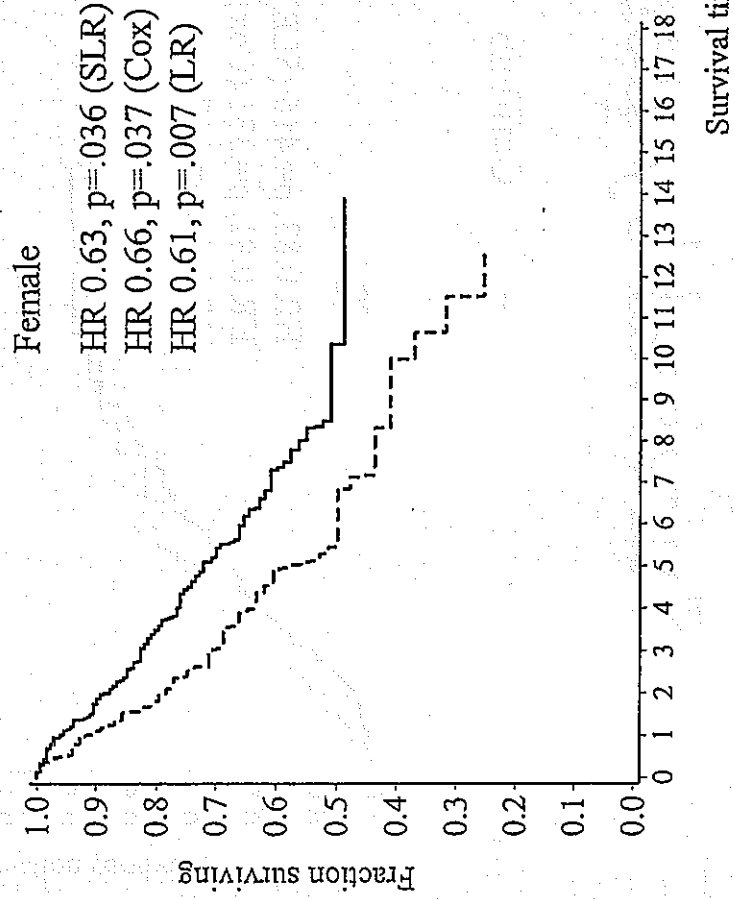


Survival time (months)

Non-Smoker

Survival by gender

— Gefitinib - - - - Placebo



Non-Smoker

Survival by Race

— Gefitinib - - - - Placebo

