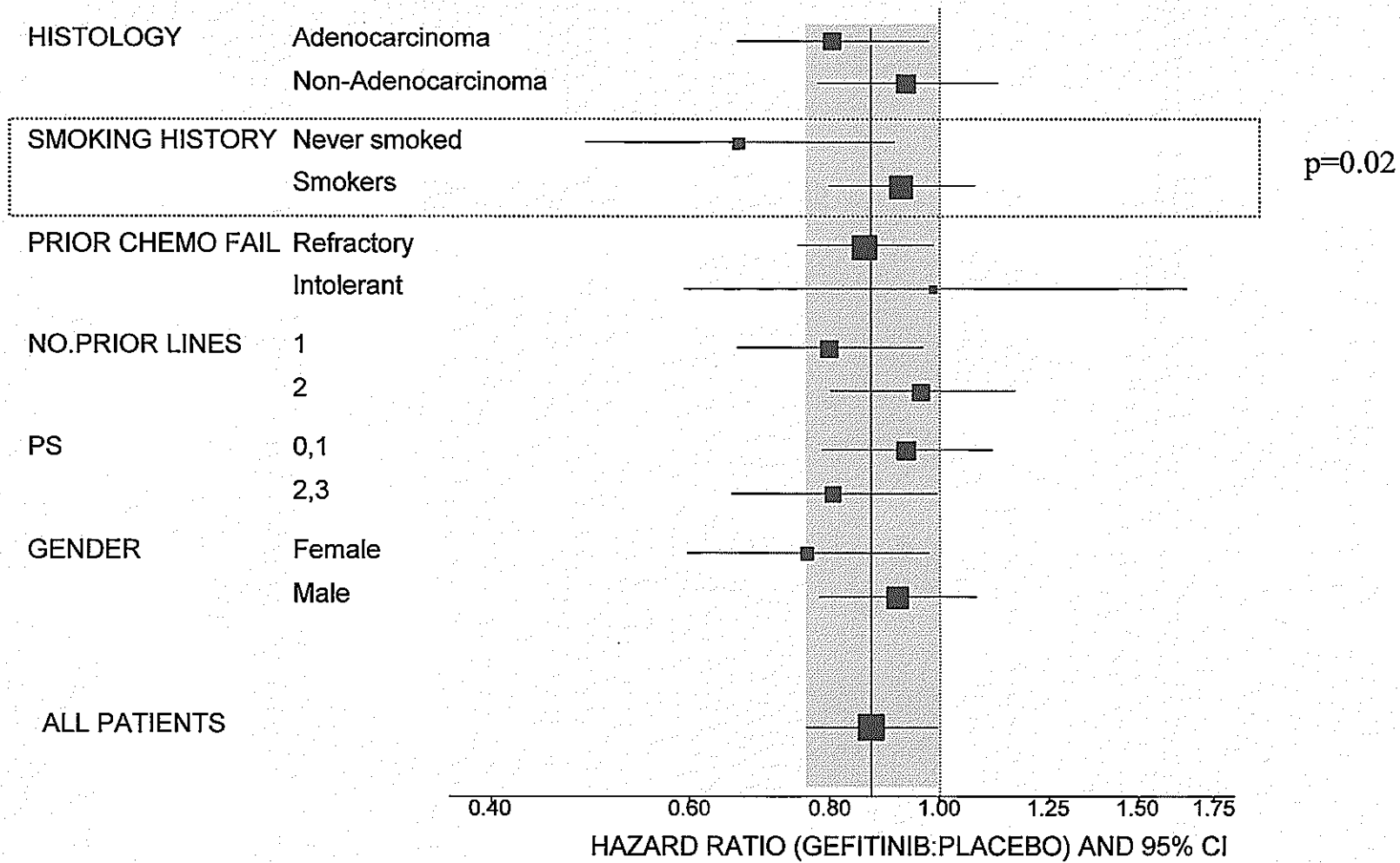
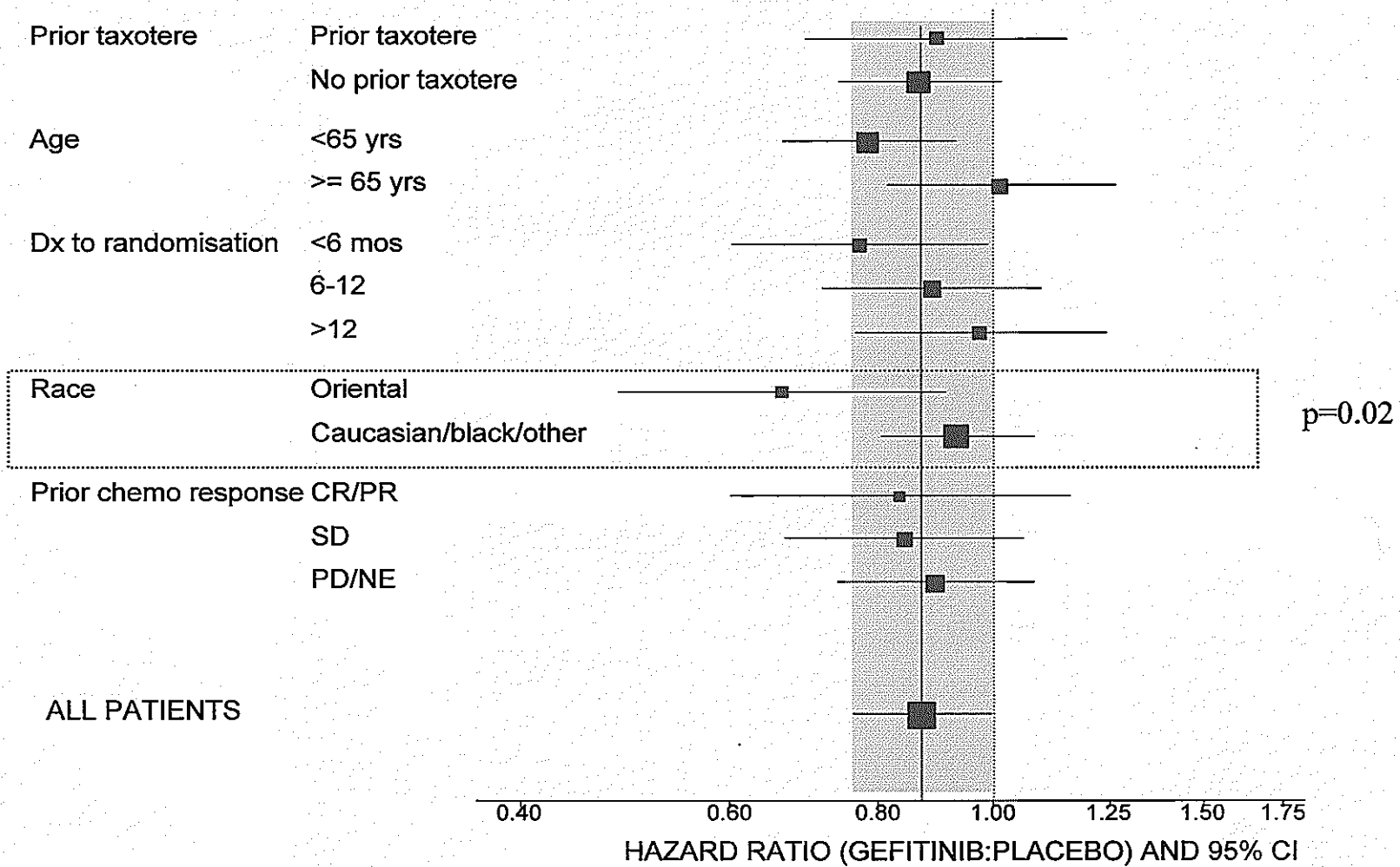


Survival Effects in Subgroups



Survival Effects in Subgroups

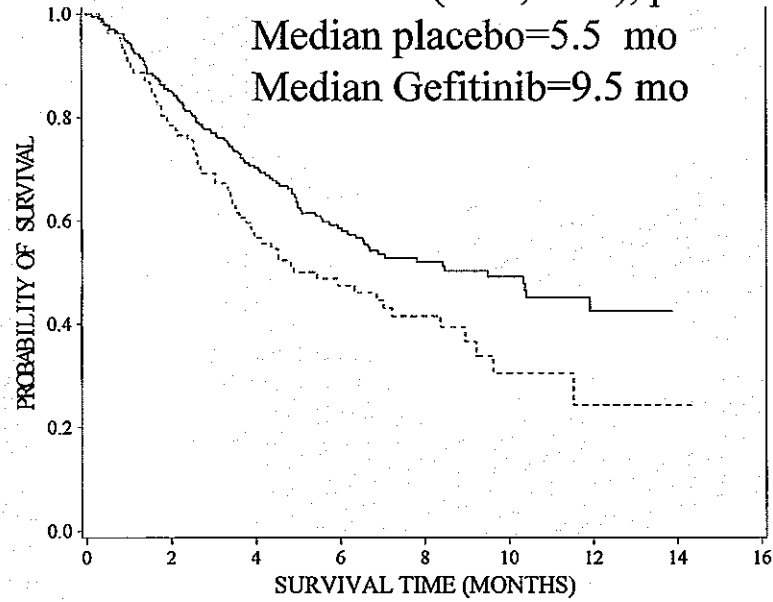


Survival by race

— Gefitinib - - - - - Placebo

Oriental

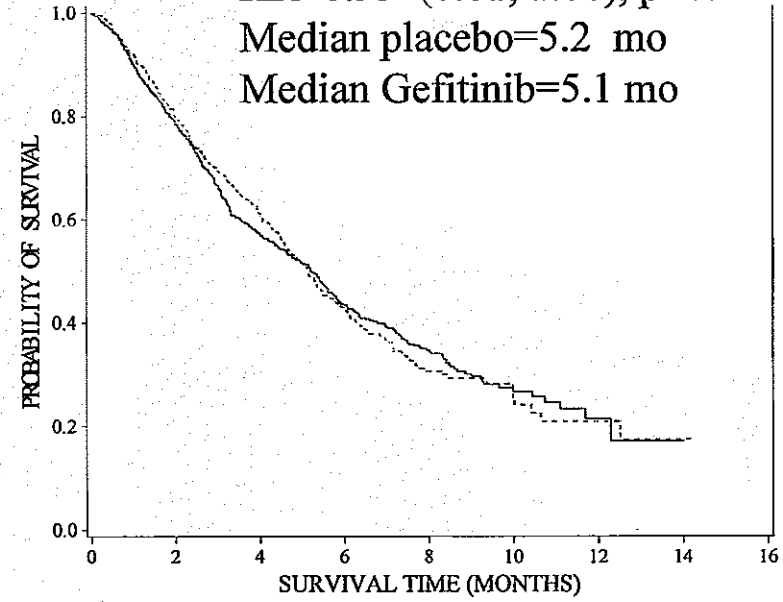
HR=0.66 (0.48, 0.91), p=0.011
 Median placebo=5.5 mo
 Median Gefitinib=9.5 mo



MONTHS :	0	2	4	6	8	10	12
AT RISK :	342	284	201	130	86	48	15

Non-oriental

HR=0.93 (0.81, 1.08), p=0.36
 Median placebo=5.2 mo
 Median Gefitinib=5.1 mo



MONTHS :	0	2	4	6	8	10	12
AT RISK :	1350	1064	675	354	166	55	16

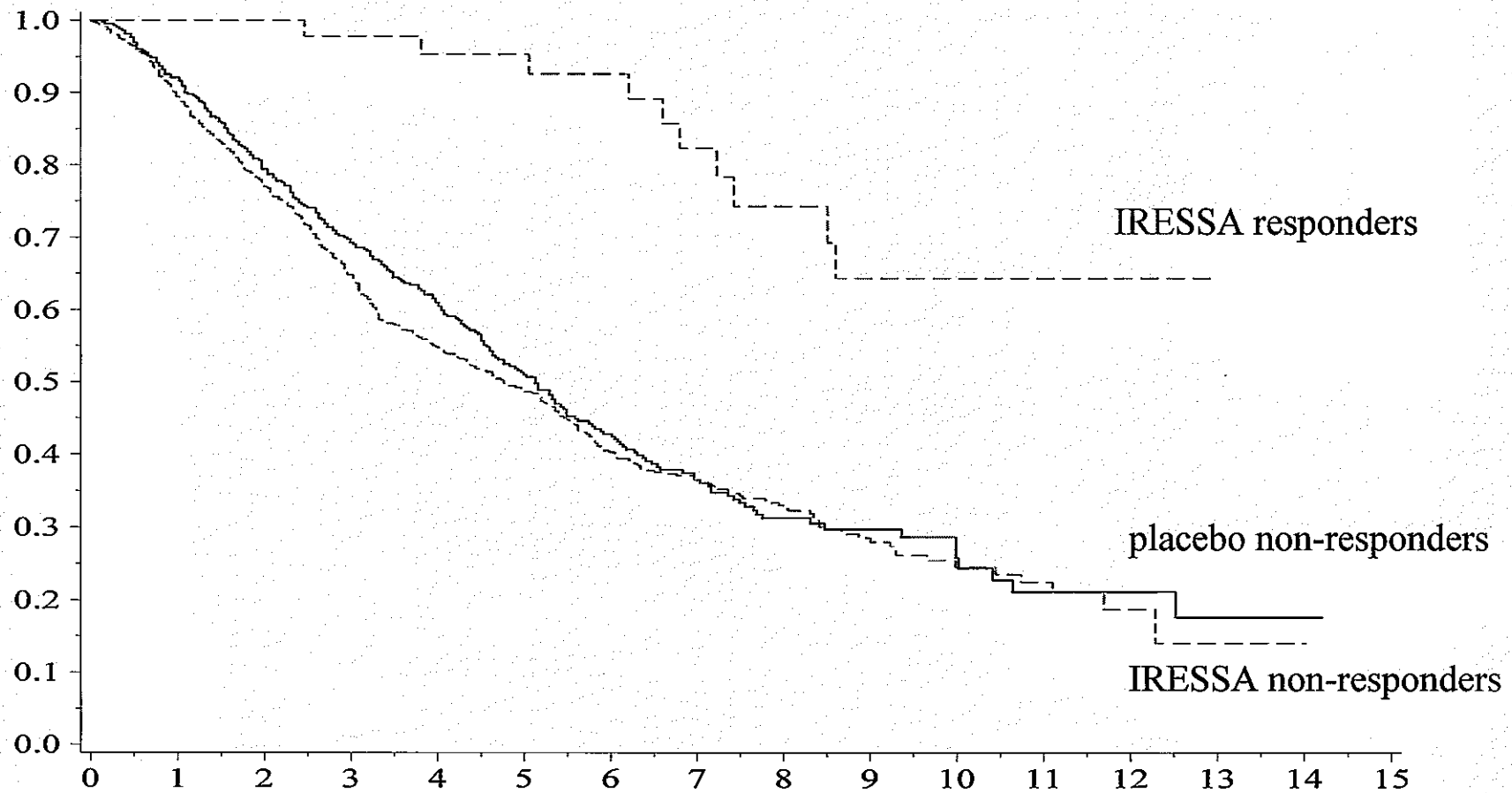
Increased response rate in Oriental patients treated with IRESSA

	Number IRESSA patients evaluable for response	ORR and 95% CI (%)
Oriental patients	208	12.0 (7.9, 17.2)
Non-Oriental patients	754	6.4 (4.7, 8.4)

Chance of a response in an Oriental patient 1.95 times the chance of a response in a non-Oriental patient ($p=0.0069$)

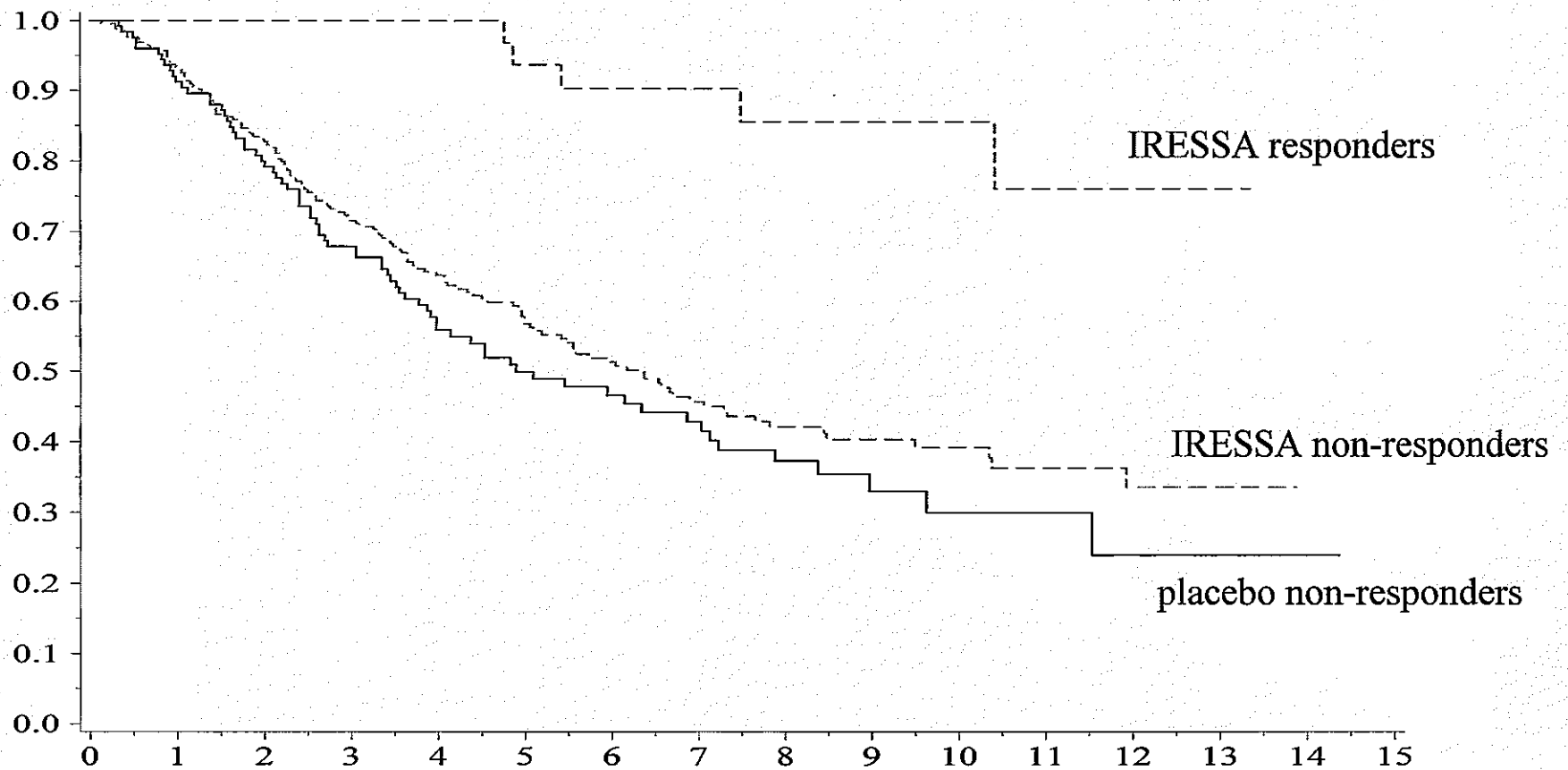
Survival according to response

Non-oriental patients



Survival according to response

Oriental patients



Outcome data by race and smoking status

N HR(95% CI) Medians: Gefitinib vs Placebo	Never smoked	Smokers	All
Oriental	N=141 0.35 (0.20, 0.61) not reached vs 4.5 mos	N=201 0.87 (0.59, 1.28) 5.7 mos vs 6.3 mos	N=342 0.66 (0.48, 0.91) 9.5 mos vs 5.5 mos
Non-oriental	N=233 0.96 (0.65, 1.41) 7.3 mos vs 7.1 mos	N=1117 0.94 (0.80, 1.10) 4.8 mos vs 4.8 mos	N=1350 0.93 (0.81, 1.08) 5.2 mos vs 5.1 mos
All	N=374 0.67 (0.49, 0.91) 8.9 mos vs 6.1 mos	N=1318 0.93 (0.80, 1.07) 5.0 mos vs 5.0 mos	