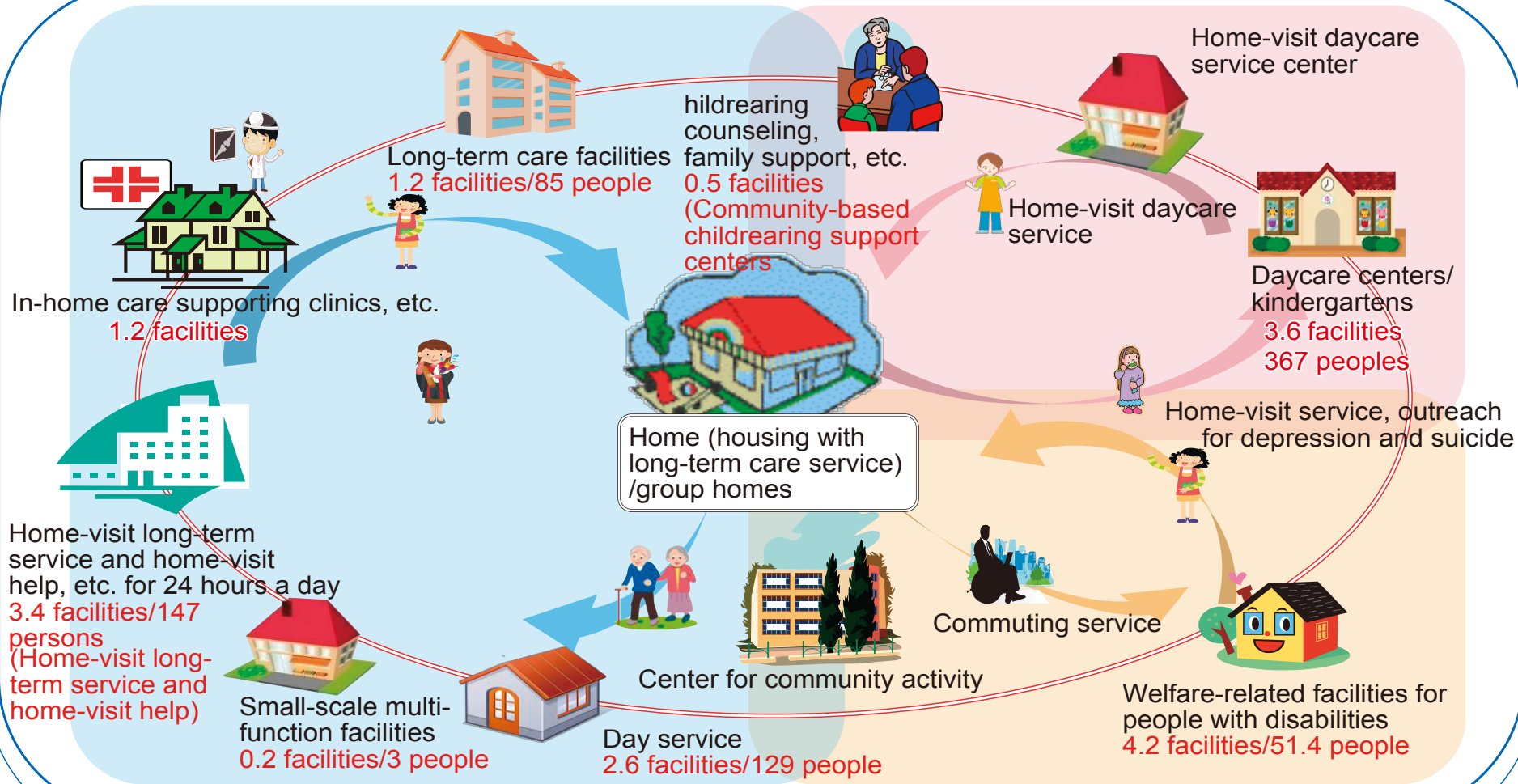


# Image of society where excellent social service can be received in the unit of junior high school district (\* Figures are the latest ones)

## Junior high school district

(About 10,000 districts nationwide/ population in the district about 12,000)

Figures represent the latest number of facilities nationwide divided by 10,000/approximate number of users per day



# Examples of Participatory Social Security (Positive Welfare) ③

...Alleviating disparity and poverty

