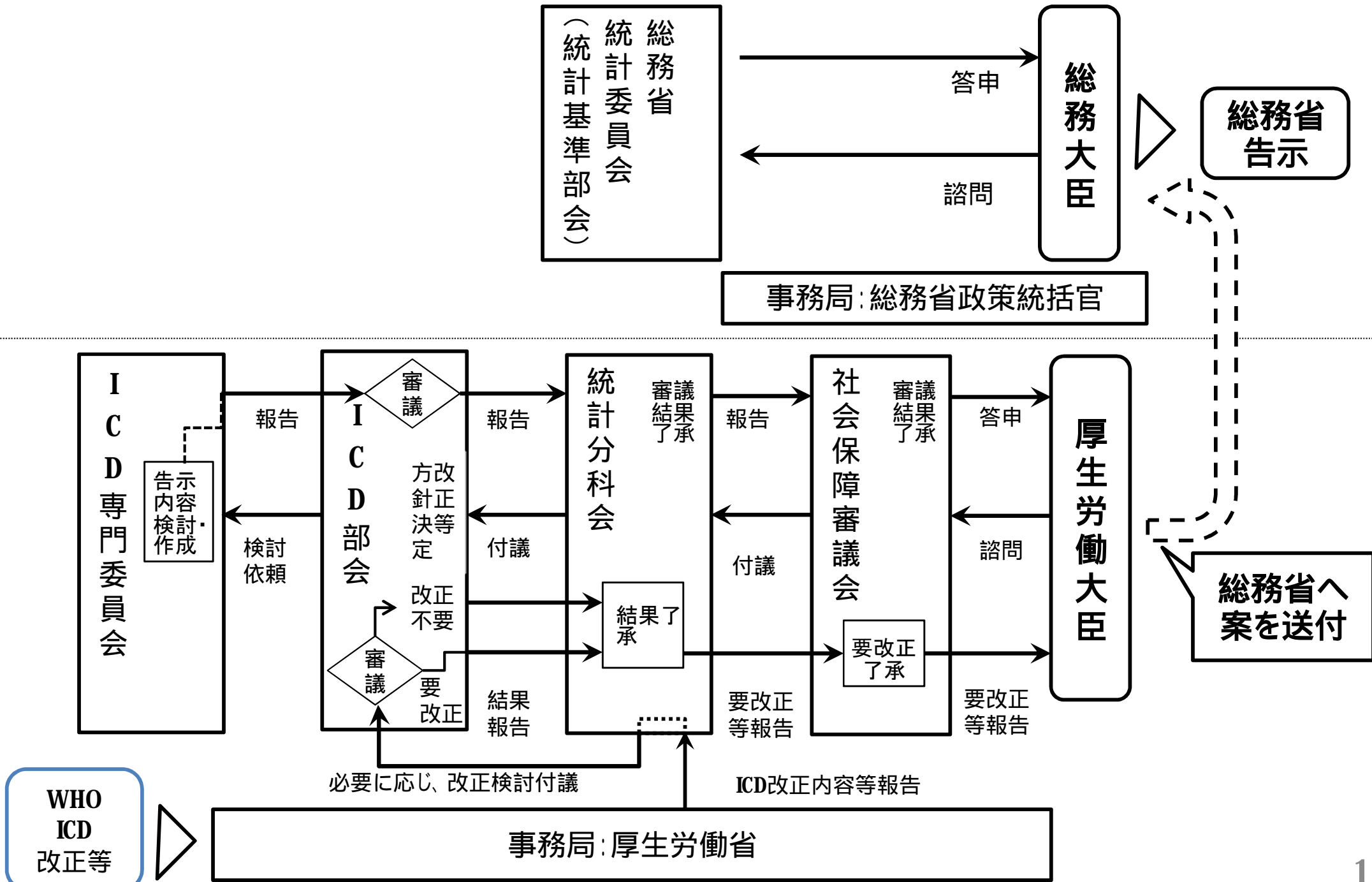


# ICD告示改正の流れ（国内）



# 各分類項目に含まれる内容（告示・和訳対象範囲の検討）

ICD-11 (Mortality and Morbidity Statistics)

Search [Advanced Search] Foundation Linearizations Contributions Info More...

ICD-11 - Mortality and Morbidity Statistics

- 01 Certain infectious or parasitic diseases
- 02 Neoplasms
- 03 Diseases of the blood or blood-forming organs
- 04 Diseases of the immune system
- 05 Endocrine, nutritional or metabolic diseases
- 06 Mental, behavioural or neurodevelopmental disorders
- 07 Sleep-wake disorders
- 08 Diseases of the nervous system
- 09 Diseases of the visual system
- 10 Diseases of the ear or mastoid process
- 11 Diseases of the circulatory system
- 12 Diseases of the respiratory system
  - Upper respiratory tract disorders
    - CA00 Acute nasopharyngitis**
    - CA01 Acute sinusitis
      - CA02 Acute pharyngitis
      - CA03 Acute tonsillitis
      - CA04 Acute laryngopharyngitis
      - CA05 Acute laryngitis or tracheitis
      - CA06 Acute obstructive laryngitis or epiglottitis
      - CA07 Acute upper respiratory infections of multiple and unspecified sites
      - CA08 Vasomotor or allergic rhinitis
      - CA09 Chronic rhinitis, nasopharyngitis or pharyngitis
      - CA0A Chronic rhinosinusitis
      - CA0B Silent sinus syndrome
      - CA0C Cyst or mucocele of nose or nasal sinus
      - CA0D Deviated nasal septum
      - CA0E Hypertrophy of nasal turbinates
      - CA0F Chronic diseases of tonsils or adenoids
      - CA0G Chronic laryngitis or laryngotracheitis
      - CA0H Diseases of vocal cords or larynx, not elsewhere classified
      - CA0J Nasal polyp
      - CA0K Abscess of upper respiratory tract
      - CA0L Dyskinesia trachea
      - CA0M Trachea ossification
      - CA0N Perichondritis of trachea
      - CA0P Trachea stricture
      - CA0Q Tracheomalacia
      - CA0R Rhinoscleroma

Foundation Id : <http://id.who.int/icd/entity/2066255370>

**CA00 Acute nasopharyngitis**

**Parent**  
Upper respiratory tract disorders

**Description**  
A disease of the upper respiratory tract, caused by an infectious agent. This disease is characterized by pharyngitis, runny nose, stuffy nose, or cough. Transmission is by inhalation of respiratory secretions, or direct contact.

**Additional Information**  
The common cold (also known as nasopharyngitis, rhinopharyngitis, acute coryza, or a cold) is a viral infectious disease of the upper respiratory system which affects primarily the nose. The meaning of nasopharynx is the same as epipharynx however the term nasopharyngitis is generally used when the disease involves the nose, pharynx and larynx. Often called "a cold" indicates a "common cold infection". The cause of the common cold is 90% by a viral infection, other causes include bacterial or mycoplasma infections. Patients with nasopharyngitis present with cough, pharyngeal pain, running nose, stuffy nose as local symptoms, and increasing fever, general fatigue and headache as general symptoms. These symptoms usually resolve in seven to ten days, with some symptoms lasting up to three weeks.

**Exclusions**

- Chronic nasopharyngitis (CA09.1)
- pharyngitis NOS (CA02)
- Acute pharyngitis (CA02)
- Chronic pharyngitis (CA09.2)
- rhinitis NOS (CA09.0)
- sore throat NOS (CA00-CA0Z)
- Vasomotor rhinitis (CA08.3)
- Chronic rhinitis (CA09.0)
- Allergic rhinitis (CA08.0)
- acute sore throat (CA02)
- chronic sore throat (CA09.2)

**All Index Terms**

- Acute nasopharyngitis
- acute infective rhinitis
- cold
- common cold
- coryza
- head cold
- infective nasopharyngitis
- Rhinopharyngitis
- acute coryza
- acute nasal catarrh
- acute rhinitis
- infective rhinitis

死亡・疾病統計用分類  
(ICD-11 MMS: Mortality  
and Morbidity Statistics)

①分類名

③解説文

④追加情報

⑤除外用語

②索引用語

# 各分類項目に含まれる内容（告示・和訳対象範囲の検討）

ユニークID (URI)

ICD-11 (Foundation)

Search: [ ] [Advanced Search] Foundation Linearizations Citations Info More...

Foundation ID: <http://id.who.int/icd/entity/2066255370>

**Acute nasopharyngitis**

**Parent(s)**

- Upper respiratory tract disorders
- Infections due to Rhinovirus
- 5-70 Other and unspecified diseases of the respiratory system

**Description**

A disease of the upper respiratory tract, caused by an infection with rhinovirus. This disease is characterized by pharyngitis and rhinitis. Transmission is by inhalation or contact.

**Additional Information**

The common cold (also known as nasopharyngitis, rhinopharyngitis, acute coryza, or a cold) is a viral infectious disease that affects primarily the nose. The epipharynx; however the term nasopharyngitis is generally used when epipharyngitis extends to the nose, pharynx and larynx. In addition to rhinovirus, other causes include bacterial or mycoplasma infections. Patients with nasopharyngitis present with a high fever, sore throat, nasal discharge, and headache as general symptoms. These symptoms usually resolve in seven to ten days, with some symptoms lasting up to two weeks.

**Synonyms**

- acute infective rhinitis
- cold
- common cold
- coryza
- head cold
- infective nasopharyngitis
- Rhinopharyngitis
- acute coryza
- acute nasal catarrh
- acute rhinitis
- infective rhinitis
- acute nasopharyngeal catarrh
- infective nasopharyngitis NOS
- Nasopharyngitis NOS
- epipharyngitis
- mucositis NOS
- inflammatory disease of mucous membrane
- mucosal inflammation

**Exclusions**

- Chronic nasopharyngitis
- pharyngitis NOS
- Acute pharyngitis
- Chronic pharyngitis
- rhinitis NOS
- sore throat NOS
- Vasomotor rhinitis
- Chronic rhinitis
- Allergic rhinitis
- acute sore throat
- chronic sore throat

**Body Site**

- Pharyngeal structure (body structure)
- Entire pharynx (body structure)
- Internal nose structure (body structure)
- Nasal cavity structure (body structure)
- Entire nasal cavity (body structure)

**Signs and Symptoms**

- Inflammation (qualifier value)
- Inflammation (morphologic abnormality)

**Etiology Type**

- Infectious disease (disorder)

**①分類名**

**②同義語**

**②狭義語**

**③解説文**

**④追加情報**

**⑤除外用語**

**⑥その他：**

- 身体的部位
- 症状・兆候
- 病因の種類  
ほか

**②索引用語**

同義語、細分類、狭義語は、MMSでは、索引用語として表示される。

ファウンデーション (Foundation)：各項目は、MMSに表示される情報（死亡・疾病統計として必要なもの）のほか、基盤情報として、裏に様々な情報を保有している。

**②細分類**

# WHO提供資料：翻訳プラットフォーム

単語単位のユニークIDが設定されているため、分類レベルではなく索引用語（病名等）レベルの管理が可能

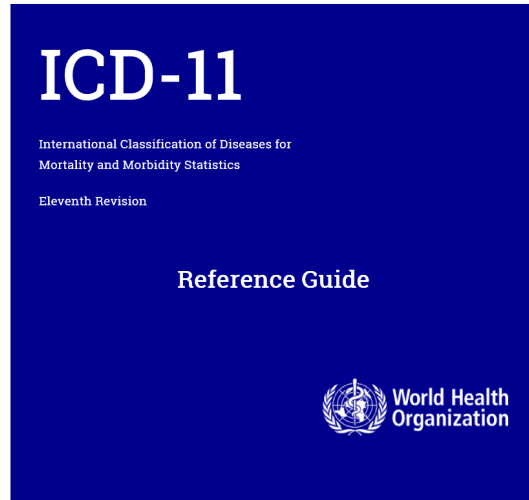
作業用エクスセル  
(非公開)

Chapter	Linearization Entity	Linearization Entity Depth	ID	LabelEN	LabelJA	Depth	TermId	Property	
01	Kind Chapter	In kind	1	http://id.who.int/	Certain infectious or parasitic diseases	感染症及び寄生虫症	1	http://who.int/icd	Title
01					infection NOS		1	http://who.int/icd	Synonym
01					infection of unspecified organism and unspecified site		1	http://who.int/icd	Synonym
01					infectious disease NOS		1	57949_735007d5.25	Synonym
01	Block		1	http://id.who.int/	Gastroenteritis and colitis of infectious origin	腸管感染症	2	http://who.int/icd	Title
01	Block		2	http://id.who.int/	Bacterial intestinal infections	細菌性腸管感染症	3	http://who.int/icd	Title
01	Category		1	http://id.who.int/	Cholera	コレラ菌による感染症	4	http://who.int/icd	Title
01					cholera syndrome		4	http://who.int/icd	Synonym
01				http://id.who.int/	Enteritis due to cholera due to Vibrio cholerae non-01 strains		5	http://who.int/icd	Title
01				http://id.who.int/	Cholera due to Vibrio cholerae 01, biovar cholerae	コレラ菌によるコレラ [possible translation]	5	http://who.int/icd	Title

# WHO提供資料：レファレンスガイド（旧第2巻総論）

## ICD-11 Reference Guide

- 1 Part 1 - What is ICD-11?
- 2 Part 2 - How does ICD-11 work?
- 3 Part 3 - What is new in ICD-11?



## ICD-11 Reference Guide

- 2.15 Electronic reporting
- 2.16 Main uses of the ICD: Mortality
- 2.17 Mortality statistics
  - 2.17.1 What is tabulated: Underlying cause of death
- 2.18 Data source: The international death certificate
- 2.19 Basic concepts
- 2.20 Coding instructions for mortality
- 2.21 Check for modifications of the starting point (Steps M1 to M4)
- 2.22 Special instructions in selecting the underlying cause of death
- 2.23 Coding instructions for mortality: multiple cause coding and other specific instructions
- 2.24 Routine use and special cases
- 2.25 Main Uses of the ICD: Morbidity
- 2.26 Special cases
- 2.27 Morbidity for research purposes
- 2.28 General statistical recommendations
- 2.29 International morbidity reporting
- 2.30 Recommendations in relation to statistical tables for international comparison
- 2.31 ICD maintenance and application
  - 2.32 Mortality Rules - Knowledgebase
  - 2.33 Automated coding tools for mortality
- 2.34 Annexes: International forms of death certificate
- 2.35 Annexes: Lists used in mortality coding
  - 2.36 Chapter Structure of the Joint Linearisation
  - 2.37 Chapter Structure of the MMS Linearization

- 3 Part 3 - What is new in ICD-11?

## 2.18 Data source: The international death certificate

The international mortality coding instructions presuppose that data have been collected with a death certificate conforming to the international form of medical certificate of cause of death as recommended by the WHO (see Figure). The medical data part of the international form (FRAME A) is split into two parts: Part 1 is for diseases related to the train of events leading directly to death, and Part 2 is for other significant conditions contributing to death. All other information in the form is also used in identifying the underlying cause of death for tabulation.

In order to align the way this information is collected internationally, the form should be followed as closely as possible. Otherwise, the causes of death will not be internationally comparable. For example, the following conditions need to be reported in Part 1 and in Part 2 of the certificate. Further, the instructions on the certificate, such as the conditions stated on the certificate and selecting an underlying cause for tabulation.

It is the responsibility of the medical practitioner or other qualified certifier signing the death certificate to indicate which morbid conditions led directly to death and to state any pre-existing conditions giving rise to this cause. The certifier should use his or her clinical judgement in completing the medical certificate of cause of death. Automated systems must not include lists or other prompts to guide the certifier, as these necessarily limit the range of diagnoses and therefore have an adverse effect on the accuracy and usefulness of the report. **Figure 1:** International Death Certificate

Administrative Data (can be further specified by country)	
Sex	<input type="checkbox"/> Female <input type="checkbox"/> Male <input type="checkbox"/> Unknown
Date of birth	
Date of death	
Frame A: Medical data: Part 1 and 2	
1 Report disease or condition directly leading to death on line a	Cause of death
Report chain of events in due to order (if applicable)	
State the underlying cause on the lowest used line	
2 Other significant conditions contributing to death (time intervals can be included in brackets after the condition)	
Frame B: Other medical data	
Was surgery performed within the last 4 weeks?	<input type="checkbox"/> Yes <input type="checkbox"/> No <input type="checkbox"/> Unknown
If yes please specify date of surgery	
If yes please specify reason for surgery (disease or condition)	
Was an autopsy performed?	<input type="checkbox"/> Yes <input type="checkbox"/> No <input type="checkbox"/> Unknown

## 死因選択ルール

## ICD-11 Reference Guide

- 1 Part 1 - What is ICD-11?
- 2 Part 2 - How does ICD-11 work?
  - 2.1 ICD maintenance and application
  - 2.2 ICD-11 conventions
  - 2.3 'Code also' and 'Use additional code, if desired' instructions
  - 2.4 Stem codes
  - 2.5 Extension codes
  - 2.6 ICD Print and Electronic version
  - 2.7 Tabular List, Special Tabulation Lists, Qualifiers, and Modifiers
  - 2.8 Reference Guide
  - 2.9 Index
  - 2.10 The Foundation Component
  - 2.11 Online tools
  - 2.12 Basic coding and reporting guidelines
  - 2.13 Coding step by step - clinical term
  - 2.14 Adding detail - postcoordination and cluster coding with multiple stem codes and extension codes
  - 2.15 Electronic reporting
  - 2.16 Main uses of the ICD: Mortality
- 2.17 Mortality statistics
- 2.18 Data source: The international death certificate
- 2.19 Basic concepts
- 2.20 Coding instructions for mortality
- 2.21 Check for modifications of the starting point (Steps M1 to M4)
- 2.22 Special instructions in selecting the underlying cause of death
- 2.23 Coding instructions for mortality: multiple

## 2.2 ICD-11 conventions

ICD-11 has standard ways of presenting its content. Conventions describe textual content and also apply to the coding structure.

### 2.2.1 Code structure

The codes of ICD-11 are alphanumeric and cover the range from 1A00.00 to ZZ9Z.ZZ. Codes starting with 'X' indicate an extension code (see Section 2.9 'Extension Codes'). The inclusion of a forced number at the 3rd character position prevents spelling 'undesirable words'. The letters 'O' and 'I' are omitted to prevent confusion with the numbers '0' and '1'. Technically, the coding scheme would be described as below:

ED1E.EE

- E corresponds to a 'base 34 number' (0-9 and A-Z, excluding O, I);
- D corresponds to 'base 24 number' (A-Z, excluding O, I); and
- 1 corresponds to the 'base 10 integers' (0-9)
- The first E starts with '1' and is allocated for the chapter. (i.e. 1 is for the first chapter, 2: chapter 2, ... A chapter 10, etc.)

The terminal letter Y is reserved for the residual category 'other specified' and the terminal letter 'Z' is reserved for the residual category 'unspecified'. For the chapters that have more than 240 blocks, 'F' ('other specified') and 'G' ('unspecified') are also used to indicate residual categories (due to problems with the coding space).

Chapters are indicated by the first character. For example, 1A00 is a code in chapter 1, and BA00 is a code in chapter 11.

Blocks are not coded within this code structure. There is unused coding space at the end of the 4-digit codes. There is unused coding space at the end of the 4-digit codes.

### 2.2.2 Inclusions

Within the coded categories there are typically other optional diagnostic terms and are given, in addition to the title, as examples. They are not a sub-classification of the category. They may refer to different conditions or be synonyms. They are not a sub-classification of the category.

Inclusion terms are listed primarily as a guide to the content of the category, in addition to the definition. Many of the items listed relate to important or common terms belonging to the category. Others are borderline conditions or sites listed to distinguish the boundary between one subcategory and another. The lists of inclusion terms are by no means exhaustive.

Alternative names of diagnostic entities (synonyms) are included and shown in the electronic coding tool and the Alphabetic Index.

It is sometimes necessary to read inclusion terms in conjunction with titles. This usually occurs when the inclusion terms describe lists of sites or pharmaceutical products, where appropriate words from the title (e.g. 'malignant

## ICD-11コードの表記法 や用語の解説

- ICD-10の第2巻総論にあたる内容をウェブサイト上で提供
- WHOからPDF版が提供される予定（300ページ超）
- 内容は一部未完成（WHA採択までに修正予定）

# WHO提供資料 : マッピング・テーブル

10ClassKind	Depth	icd10Code	icd10Chapter	icd10Title	11ClassKind	Depth	ICD-11 FoundationURI	Linearization (releaseURI)	icd11Code	icd11Chapter	icd11Title	2018-Jun-05
chapter	1			Certain infectious and parasitic diseases	category	1	http://id.who.int/icd/ent/1435254666	http://id.who.int/icd/release/11/2018/mms/1435254666/unspecified	1H0Z		Infection, unspecified	
block	1	A00-A09		Intestinal infectious diseases	block	1	http://id.who.int/icd/ent/588616678	http://id.who.int/icd/release/11/2018/mms/588616678			Gastroenteritis or colitis of infectious origin	
category	1	A00		Cholera	category	1	http://id.who.int/icd/ent/257068234	http://id.who.int/icd/release/11/2018/mms/257068234	1A00		Cholera	
category	2	A00.0		Cholera due to <i>Vibrio cholerae</i> 01, biovar cholerae	category	1	http://id.who.int/icd/ent/1205958647	http://id.who.int/icd/release/11/2018/mms/257068234	1A00&XN8P1		Cholera / <i>Vibrio cholerae</i> 01, biovar cholerae	
category	2	A00.1		Cholera due to <i>Vibrio cholerae</i> 01, biovar eltor	category	1	http://id.who.int/icd/ent/581614179	http://id.who.int/icd/release/11/2018/mms/257068234	1A00&XN62R		Cholera / <i>Vibrio cholerae</i> 01, biovar eltor	
category	2	A00.9		Cholera, unspecified	category	1	http://id.who.int/icd/ent/257068234	http://id.who.int/icd/release/11/2018/mms/257068234	1A00		Cholera	
category	1	A01		Typhoid and paratyphoid fevers	category	1	http://id.who.int/icd/ent/1561949126	http://id.who.int/icd/release/11/2018/mms/135352227/unspecified	1A0Z		Bacterial intestinal infections, unspecified	
category	2	A01.0		Typhoid fever	category	1	http://id.who.int/icd/ent/1528414070	http://id.who.int/icd/release/11/2018/mms/1528414070	1A07		Typhoid fever	
category	2	A01.1		Paratyphoid fever A	category	1	http://id.who.int/icd/ent/1045590756	http://id.who.int/icd/release/11/2018/mms/1780040028	1A08		Paratyphoid Fever	
category	2	A01.2		Paratyphoid fever B	category	1	http://id.who.int/icd/ent/1258234397	http://id.who.int/icd/release/11/2018/mms/1780040028	1A08		Paratyphoid Fever	
category	2	A01.3		Paratyphoid fever C	category	1	http://id.who.int/icd/ent/800386953	http://id.who.int/icd/release/11/2018/mms/1780040028	1A08		Paratyphoid Fever	
category	2	A01.4		Paratyphoid fever, unspecified	category	1	http://id.who.int/icd/ent/1780040028	http://id.who.int/icd/release/11/2018/mms/1780040028	1A08		Paratyphoid Fever	
category	1	A02		Other salmonella infections	category	1	http://id.who.int/icd/ent/1561949126	http://id.who.int/icd/release/11/2018/mms/135352227/unspecified	1A0Z		Bacterial intestinal infections, unspecified	
category	2	A02.0		Salmonella enteritis	category	1	http://id.who.int/icd/ent/1520312138	http://id.who.int/icd/release/11/2018/mms/515117475	1A09		Infection due to other <i>Salmonella</i>	
category	2	A02.1		Salmonella sepsis	category	1	http://id.who.int/icd/ent/622600769	http://id.who.int/icd/release/11/2018/mms/622600769	1G40		Sepsis	
category	2	A02.2		Localized salmonella infections	category	1	http://id.who.int/icd/ent/1561949126	http://id.who.int/icd/release/11/2018/mms/135352227/unspecified	1A0Z		Bacterial intestinal infections, unspecified	
category	2	A02.8		Other specified salmonella infections	category	1	http://id.who.int/icd/ent/515117475	http://id.who.int/icd/release/11/2018/mms/515117475	1A09		Infection due to other <i>Salmonella</i>	
category	2	A02.9		Salmonella infection, unspecified	category	1	http://id.who.int/icd/ent/520429137	http://id.who.int/icd/release/11/2018/mms/520429137	1C41		Bacterial infection of unspecified site	
category	1	A03		Shigellosis	category	1	http://id.who.int/icd/ent/2080365623	http://id.who.int/icd/release/11/2018/mms/2080365623	1A0Z		Intestinal infections due to <i>Shigella</i>	
category	2	A03.0		Shigellosis due to <i>Shigella dysenteriae</i>	category	1	http://id.who.int/icd/ent/1181145033	http://id.who.int/icd/release/11/2018/mms/2080365623	1A0Z		Intestinal infections due to <i>Shigella</i>	
category	2	A03.1		Shigellosis due to <i>Shigella flexneri</i>	category	1	http://id.who.int/icd/ent/590158429	http://id.who.int/icd/release/11/2018/mms/2080365623	1A0Z		Intestinal infections due to <i>Shigella</i>	
category	2	A03.2		Shigellosis due to <i>Shigella boydii</i>	category	1	http://id.who.int/icd/ent/1468025508	http://id.who.int/icd/release/11/2018/mms/2080365623	1A0Z		Intestinal infections due to <i>Shigella</i>	
category	2	A03.3		Shigellosis due to <i>Shigella sonnei</i>	category	1	http://id.who.int/icd/ent/852199222	http://id.who.int/icd/release/11/2018/mms/2080365623	1A0Z		Intestinal infections due to <i>Shigella</i>	
category	2	A03.8		Other shigellosis	category	1	http://id.who.int/icd/ent/520429137	http://id.who.int/icd/release/11/2018/mms/520429137	1C41		Bacterial infection of unspecified site	
category	2	A03.9		Shigellosis, unspecified	category	1	http://id.who.int/icd/ent/2080365623	http://id.who.int/icd/release/11/2018/mms/2080365623	1A0Z		Intestinal infections due to <i>Shigella</i>	
category	1	A04		Other bacterial intestinal infections	category	1	http://id.who.int/icd/ent/135352227	http://id.who.int/icd/release/11/2018/mms/135352227/unspecified	1A0Z		Bacterial intestinal infections, unspecified	
category	2	A04.0		Enteropathogenic <i>Escherichia coli</i> infection	category	2	http://id.who.int/icd/ent/2099226249	http://id.who.int/icd/release/11/2018/mms/2099226249	1A03.0		Enteropathogenic <i>Escherichia coli</i> infection	
category	2	A04.1		Enterotoxigenic <i>Escherichia coli</i> infection	category	2	http://id.who.int/icd/ent/408185629	http://id.who.int/icd/release/11/2018/mms/408185629	1A03.1		Enterotoxigenic <i>Escherichia coli</i> infection	
category	2	A04.2		Enteroinvasive <i>Escherichia coli</i> infection	category	2	http://id.who.int/icd/ent/1828273122	http://id.who.int/icd/release/11/2018/mms/1828273122	1A03.2		Enteroinvasive <i>Escherichia coli</i> infection	
category	2	A04.3		Enterohaemorrhagic <i>Escherichia coli</i> infection	category	2	http://id.who.int/icd/ent/162723448	http://id.who.int/icd/release/11/2018/mms/162723448	1A03.3		Enterohaemorrhagic <i>Escherichia coli</i> infection	
category	2	A04.4		Other intestinal <i>Escherichia coli</i> infections	category	1	http://id.who.int/icd/ent/344162786	http://id.who.int/icd/release/11/2018/mms/344162786	1A03		Intestinal infections due to <i>Escherichia coli</i>	
category	2	A04.5		Campylobacter enteritis	category	1	http://id.who.int/icd/ent/794462570	http://id.who.int/icd/release/11/2018/mms/794462570	1A06		Gastroenteritis due to <i>Campylobacter</i>	
category	2	A04.6		Enteritis due to <i>Yersinia enterocolitica</i>	category	1	http://id.who.int/icd/ent/1000894786	http://id.who.int/icd/release/11/2018/mms/1000894786	1A05		Intestinal infections due to <i>Yersinia enterocolitica</i>	
category	2	A04.7		Enterocolitis due to <i>Clostridium difficile</i>	category	1	http://id.who.int/icd/ent/250688797	http://id.who.int/icd/release/11/2018/mms/250688797	1A04		Enterocolitis due to <i>Clostridium difficile</i>	
category	2	A04.8		Other specified bacterial intestinal infections	category	1	http://id.who.int/icd/ent/135352227	http://id.who.int/icd/release/11/2018/mms/135352227/unspecified	1A0Z		Bacterial intestinal infections, unspecified	
category	2	A04.9		Bacterial intestinal infection, unspecified	category	1	http://id.who.int/icd/ent/135352227	http://id.who.int/icd/release/11/2018/mms/135352227/unspecified	1A0Z		Bacterial intestinal infections, unspecified	
category	1	A05		Other bacterial foodborne intoxications, not elsewhere classified	category	1	http://id.who.int/icd/ent/135352227	http://id.who.int/icd/release/11/2018/mms/135352227/unspecified	1A0Z		Bacterial intestinal infections, unspecified	
category	2	A05.0		Foodborne staphylococcal intoxication	category	1	http://id.who.int/icd/ent/135352227	http://id.who.int/icd/release/11/2018/mms/135352227/unspecified	1A0Z		Bacterial intestinal infections, unspecified	
category	2	A05.1		Botulism	category	1	http://id.who.int/icd/ent/135352227	http://id.who.int/icd/release/11/2018/mms/135352227/unspecified	1A0Z		Bacterial intestinal infections, unspecified	
category	2	A05.2		Foodborne <i>Clostridium perfringens</i> [ <i>Clostridium welchii</i> ] intoxication	category	1	http://id.who.int/icd/ent/135352227	http://id.who.int/icd/release/11/2018/mms/135352227/unspecified	1A0Z		Bacterial intestinal infections, unspecified	
category	2	A05.3		Foodborne <i>Vibrio parahaemolyticus</i> intoxication	category	1	http://id.who.int/icd/ent/135352227	http://id.who.int/icd/release/11/2018/mms/135352227/unspecified	1A0Z		Bacterial intestinal infections, unspecified	

ICD-10

ICD-11

- 以下の3ファイルを提供
  - ✓ ICD-10 (1対複数) ICD-11
  - ✓ ICD-10 (1対1) ICD-11
  - ✓ ICD-11 (1対複数) ICD-10

- マッピングは、マッピング・ツール (非公開) によって管理されている。

The screenshot displays the WHO ICD-11 Mappings tool interface. It features a search bar at the top with 'ICD-11' entered. Below the search bar, there are tabs for 'Mappings', 'Browse', 'Contributions', and 'More...'. The main content area is titled 'Mapping Statements' and shows a list of mapping statements for 'Bacterial pneumonia'. The statements are color-coded: orange for 'Bacterial pneumonia' and green for 'J15.8 Other bacterial pneumonia' and 'J15.9 Bacterial pneumonia, unspecified'. Below the mapping statements, there is a section for 'Derived Crosswalks' which shows a crosswalk from ICD-11 to ICD-10. The crosswalk is titled 'Single entity Crosswalk' and shows that 'ICD11 Bacterial pneumonia' is mapped to 'ICD10 Bacterial pneumonia, not elsewhere classified (J15)'. There is also a section for 'Multiple entity Crosswalk' which shows that 'ICD11 Bacterial pneumonia' is mapped to 'ICD10 Bacterial pneumonia, not elsewhere classified (J15)'. On the right side of the interface, there is a sidebar with a tree view of ICD-10 categories, including 'Certain infectious and parasitic diseases', 'Neoplasms', 'Diseases of the blood and blood-forming organs and certain disorders involving the immune mechanism', 'Endocrine, nutritional and metabolic diseases', 'Mental, behavioural or neurodevelopmental disorders', 'Sleep-wake disorders', 'Diseases of the nervous system', 'Diseases of the visual system', 'Diseases of the ear or mastoid process', 'Diseases of the circulatory system', 'Diseases of the respiratory system', 'Neoplasms of the respiratory system', 'Developmental respiratory diseases', 'Upper respiratory tract disorders', 'Certain lower respiratory tract diseases', 'Lung infections', 'Pneumonia', 'Bronchopneumonia', 'Community acquired pneumonia', 'Hospital acquired pneumonia', 'Nosocomially acquired pneumonia', 'Bacterial pneumonia', 'Viral pneumonia', 'Fungal pneumonia', 'Pneumonia in parasitic diseases', 'Late acquired pneumonia', 'Severe acute respiratory syndrome', 'Congenital pneumonia', 'Abscess of lung with pneumonia', 'Acute bronchiolitis', 'Acute bronchitis', 'Abscess of lung or mediastinum', 'Pyothorax', and 'Respiratory infections, not elsewhere classified'.