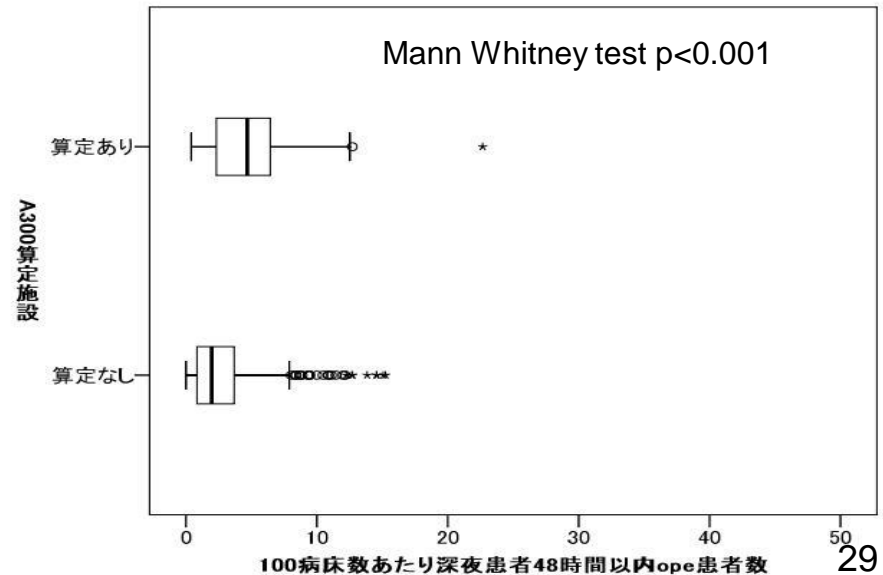
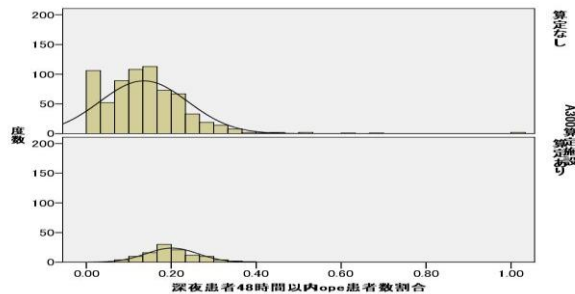
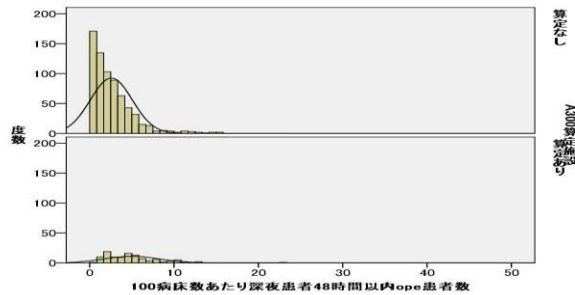
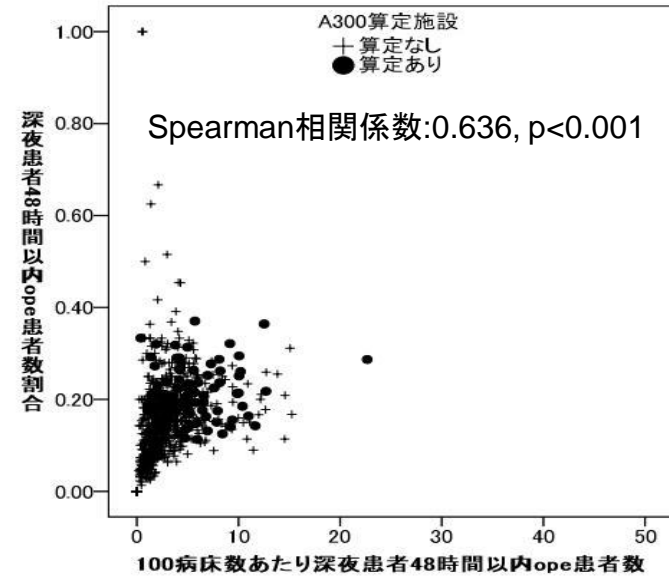
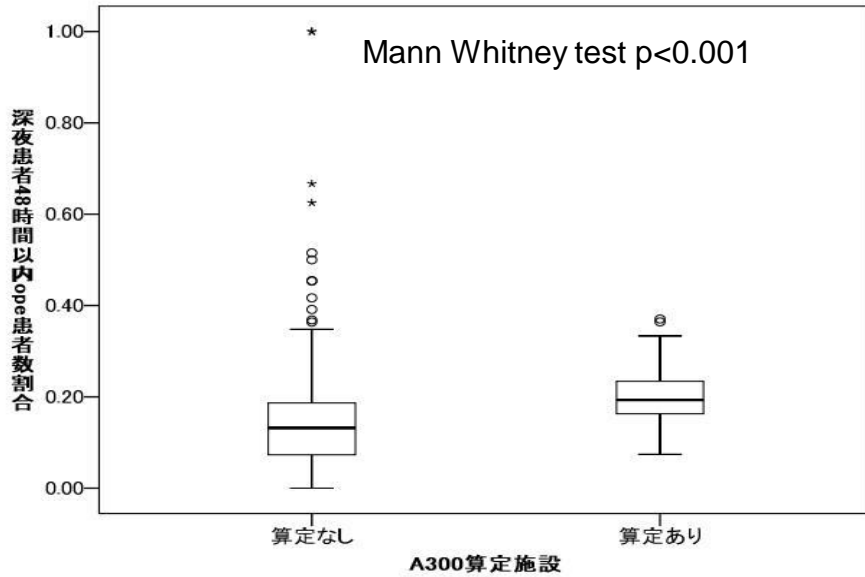
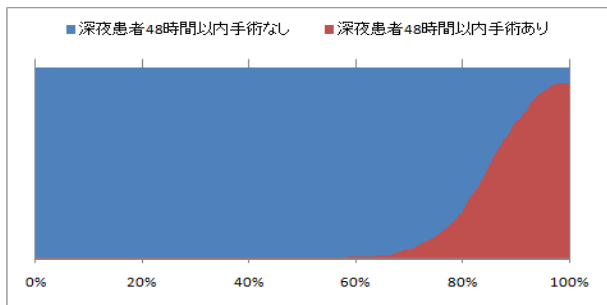
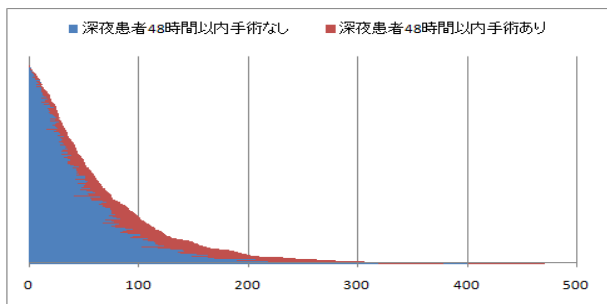


救命救急算定施設別 深夜受診患者 48時間以内手術患者数(一般病床100床あたり)と割合

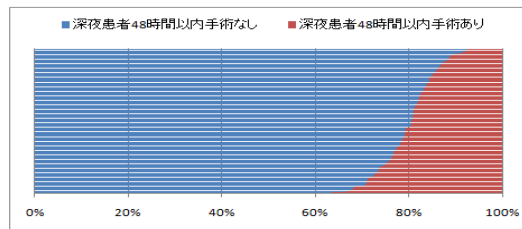
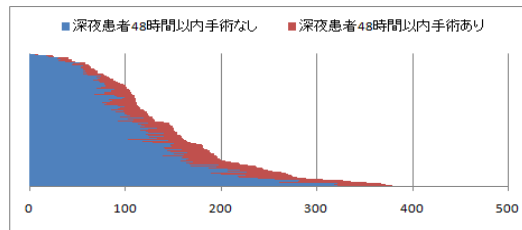


救命救急算定施設別 深夜受診患者 48時間以内手術患者数 【一般病床数での補正なし】

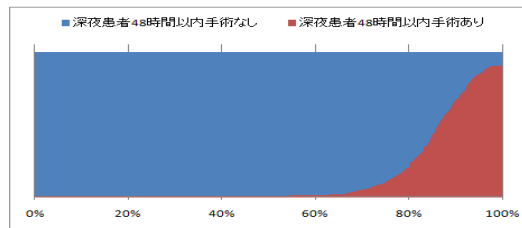
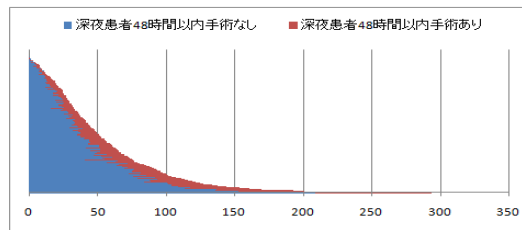
全体



A300算定あり



A300算定なし



救命救急算定施設別 時間外受診患者 48時間以内手術(ope)患者数(一般病床100床あたり)と割合

