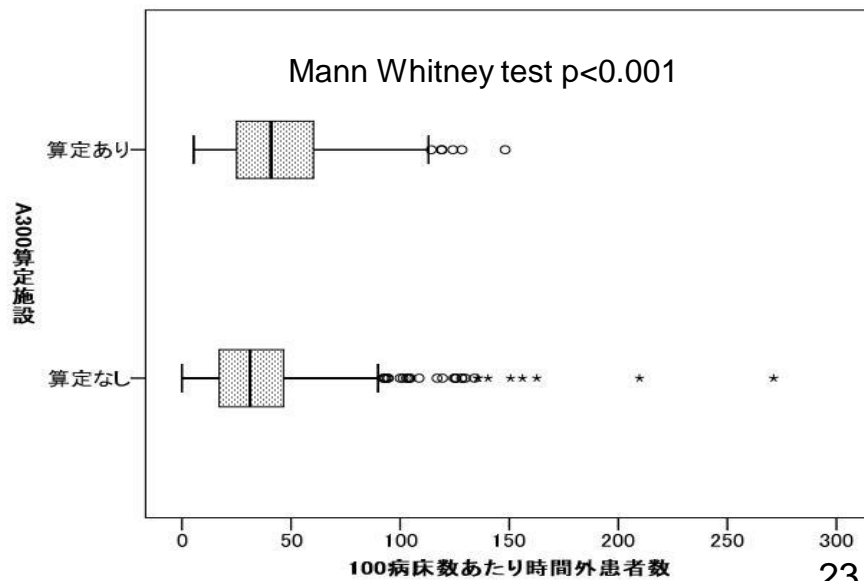
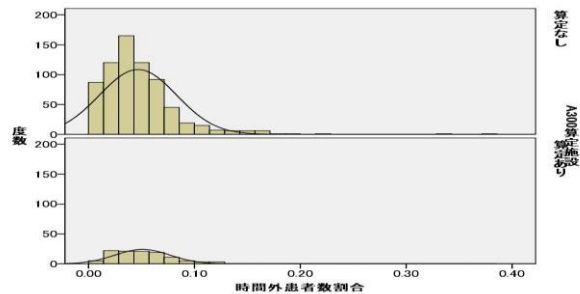
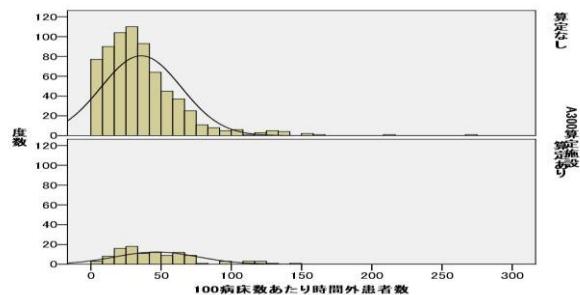
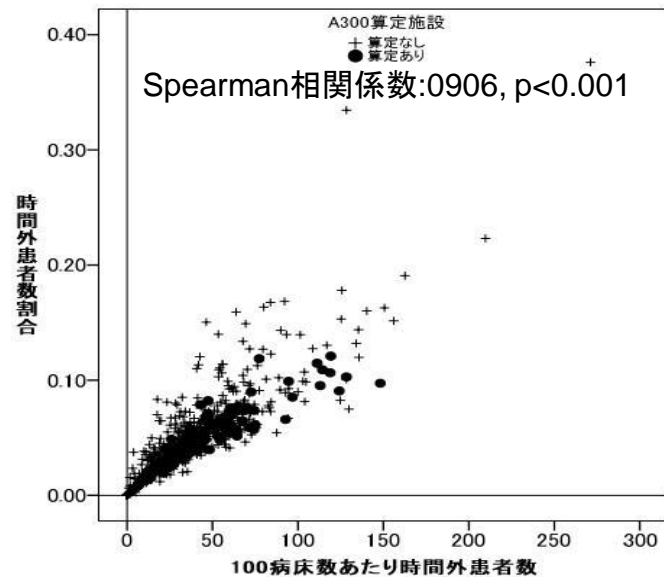
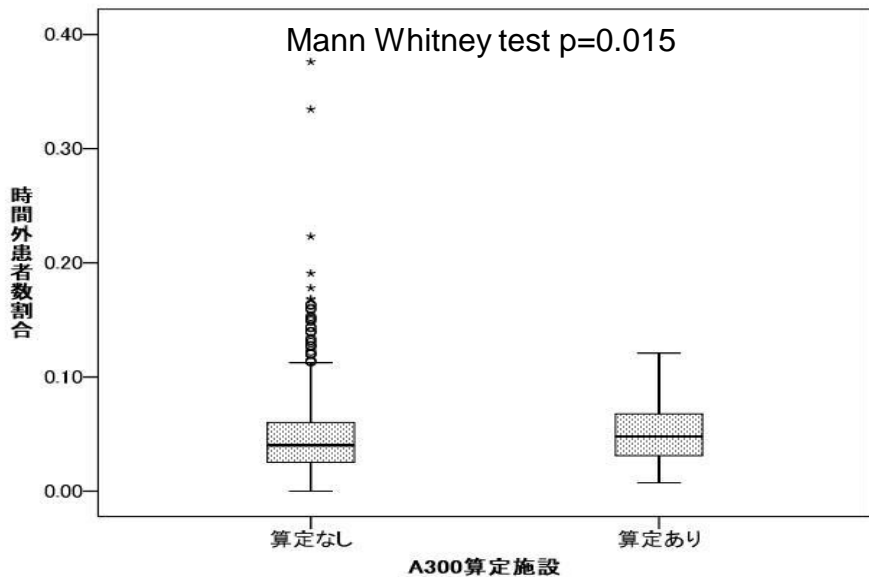
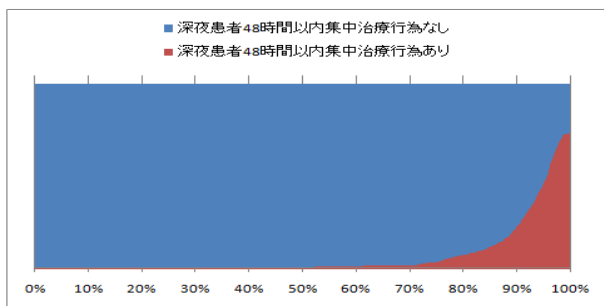
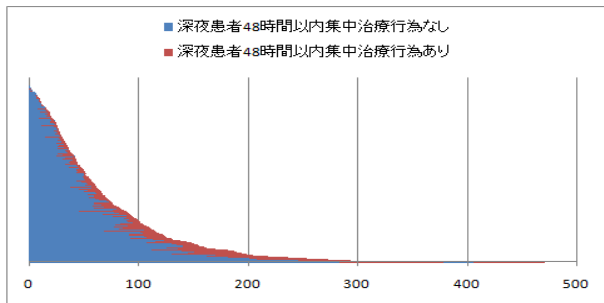


# 救命救急算定施設別 時間外入院患者数と割合

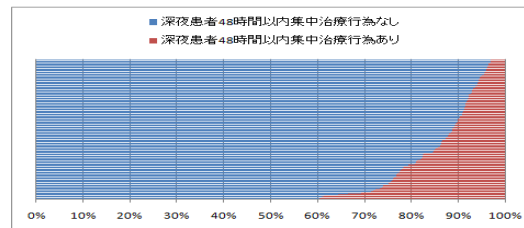
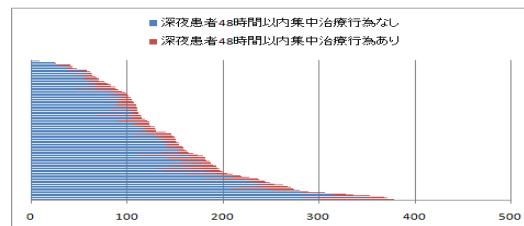


# 救命救急算定施設別 深夜受診患者 48時間以内集中治療行為患者数 【一般病床数での補正なし】

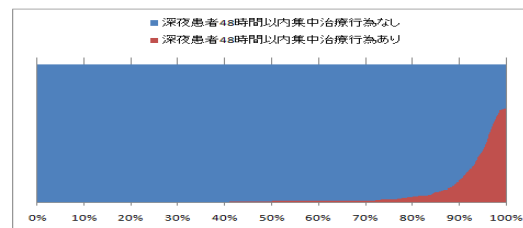
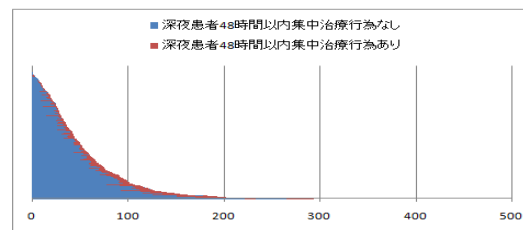
全体



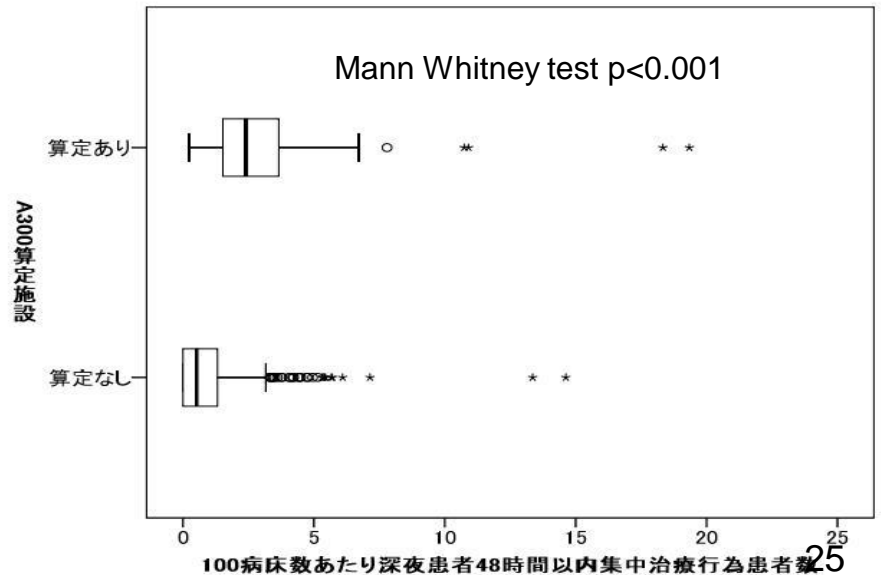
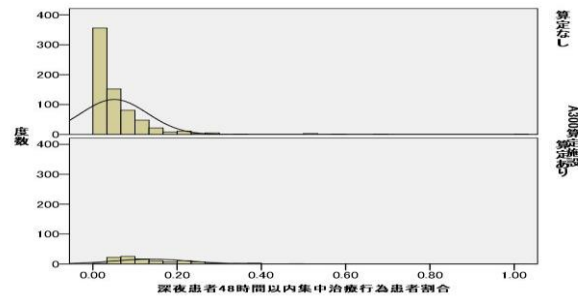
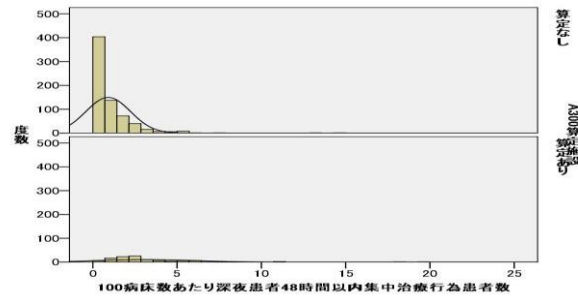
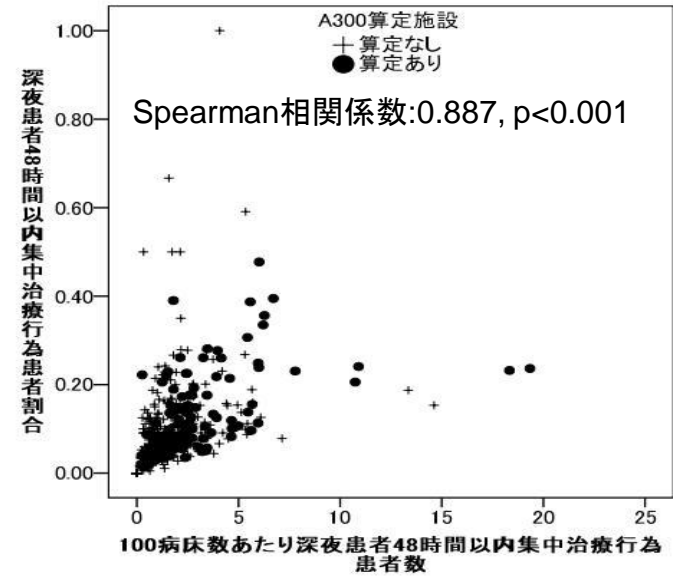
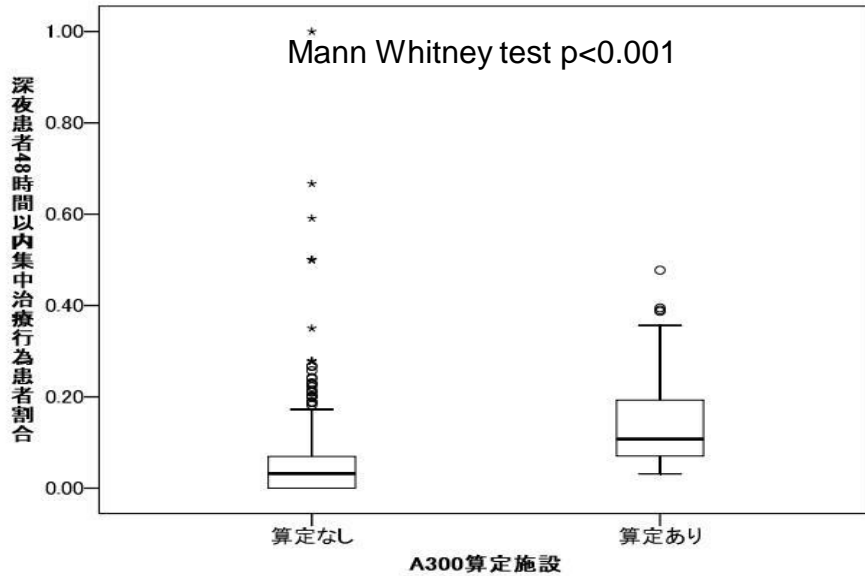
A300算定あり



A300算定なし

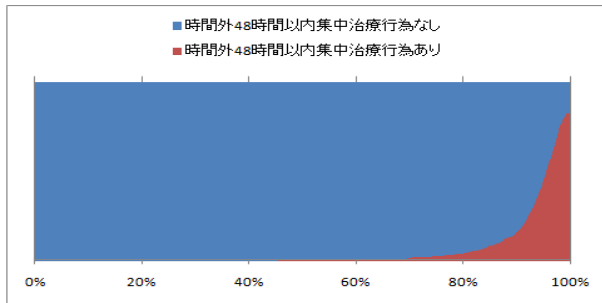
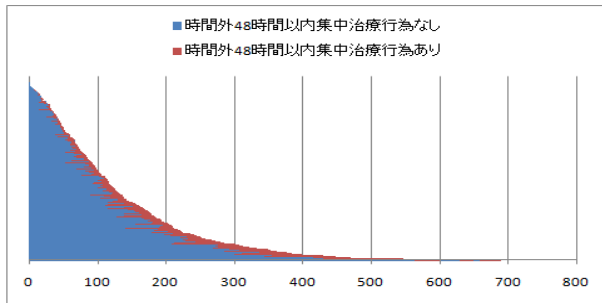


# 救命救急算定施設別 深夜受診患者 48時間以内集中治療行為患者数(一般病床100床あたり)と割合

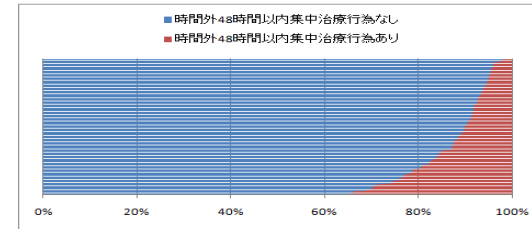
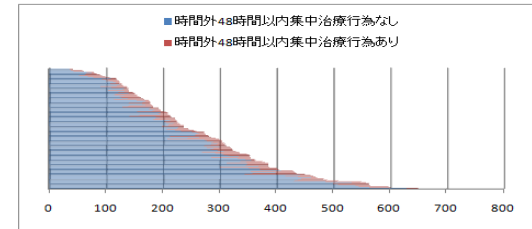


# 救命救急算定施設別 時間外受診患者 48時間以内集中治療行為患者数 【一般病床数での補正なし】

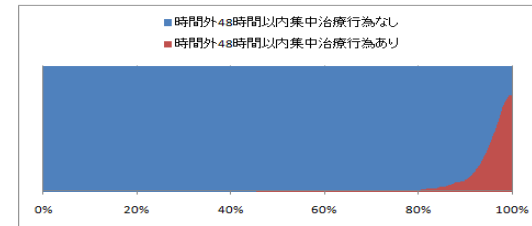
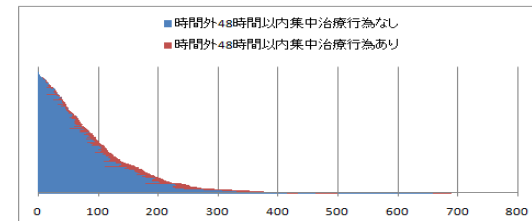
全体



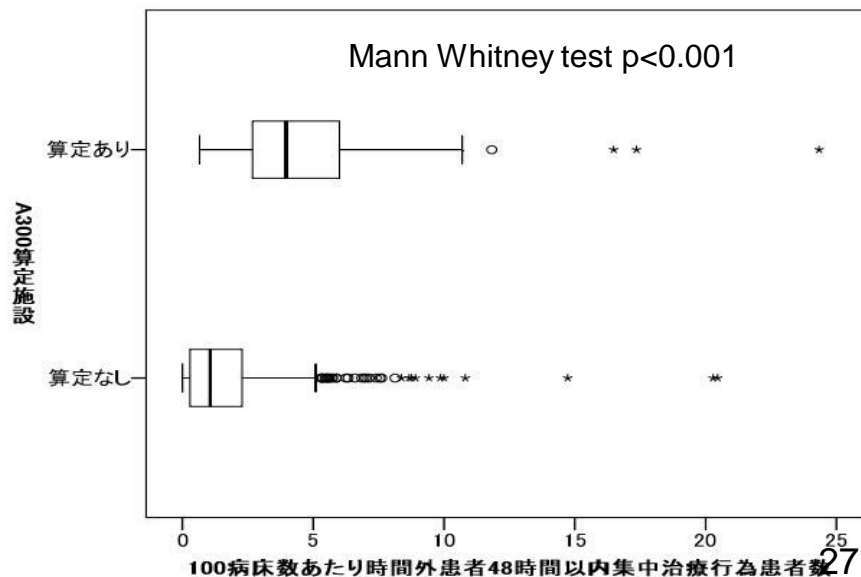
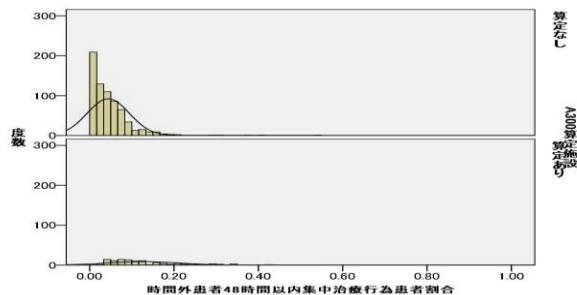
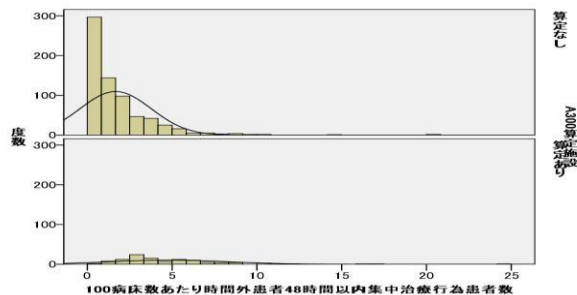
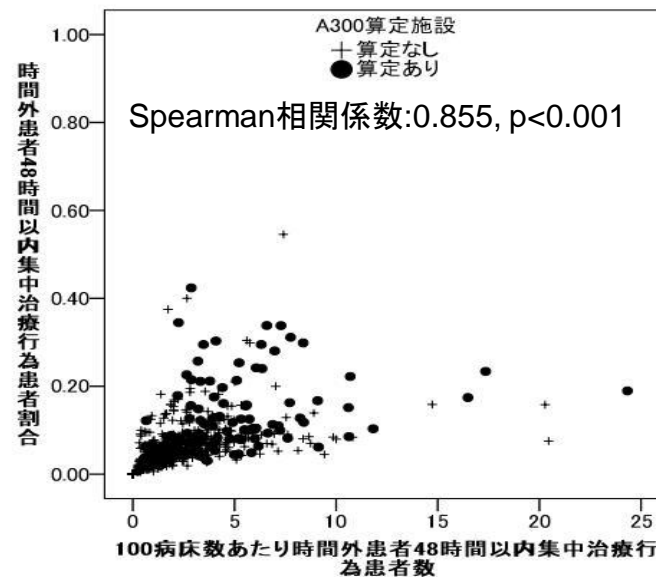
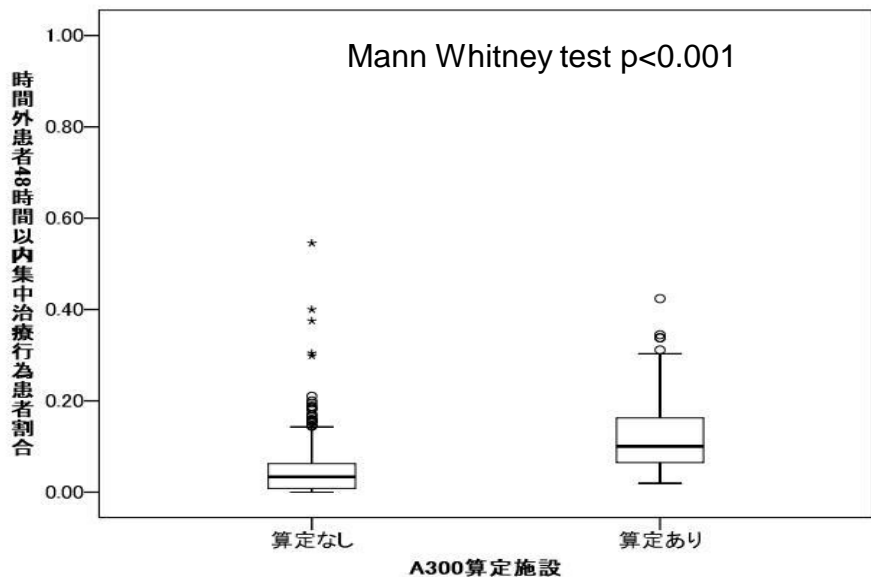
A300算定あり



A300算定なし

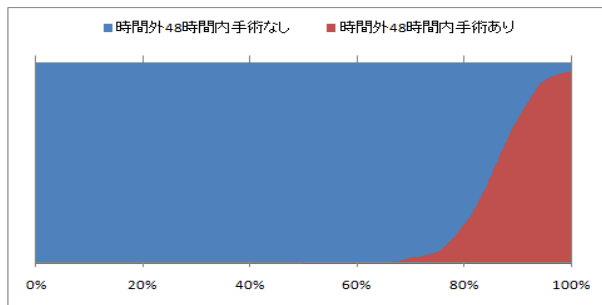
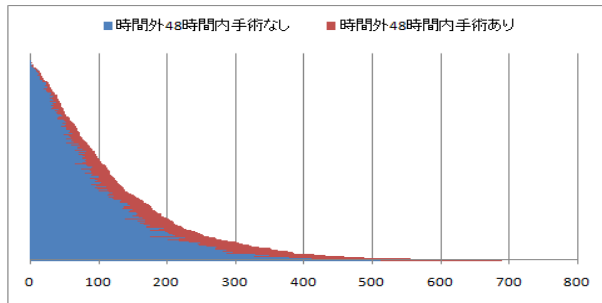


# 救命救急算定施設別 時間外受診患者 48時間以内集中治療行為患者数(一般病床100床あたり)と割合

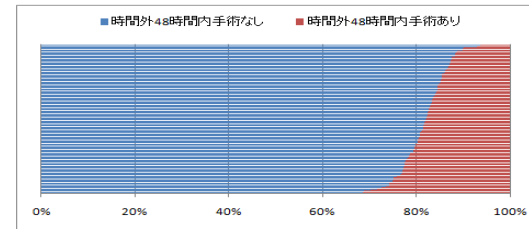
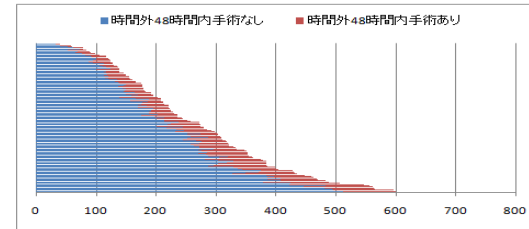


# 救命救急算定施設別 時間外受診患者 48時間以内手術患者数 【一般病床数での補正なし】

全体



A300算定あり



A300算定なし

