

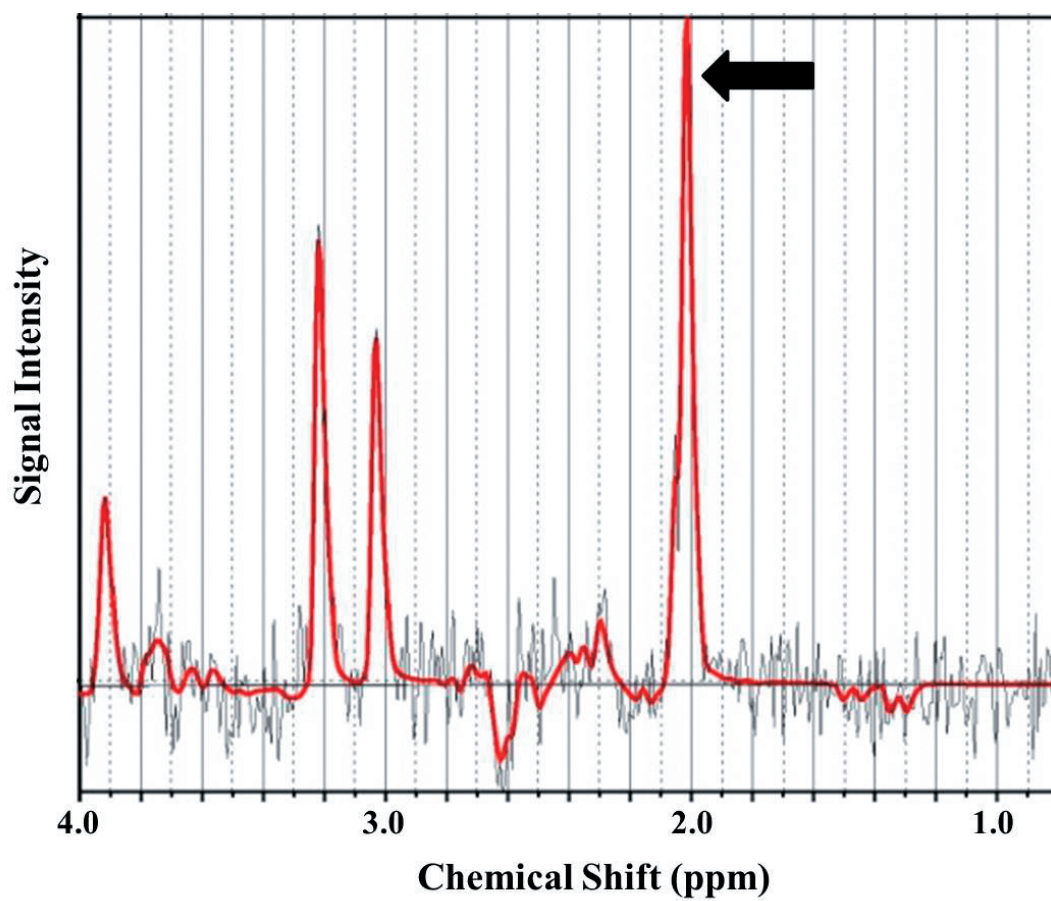
68

午 前

別 冊

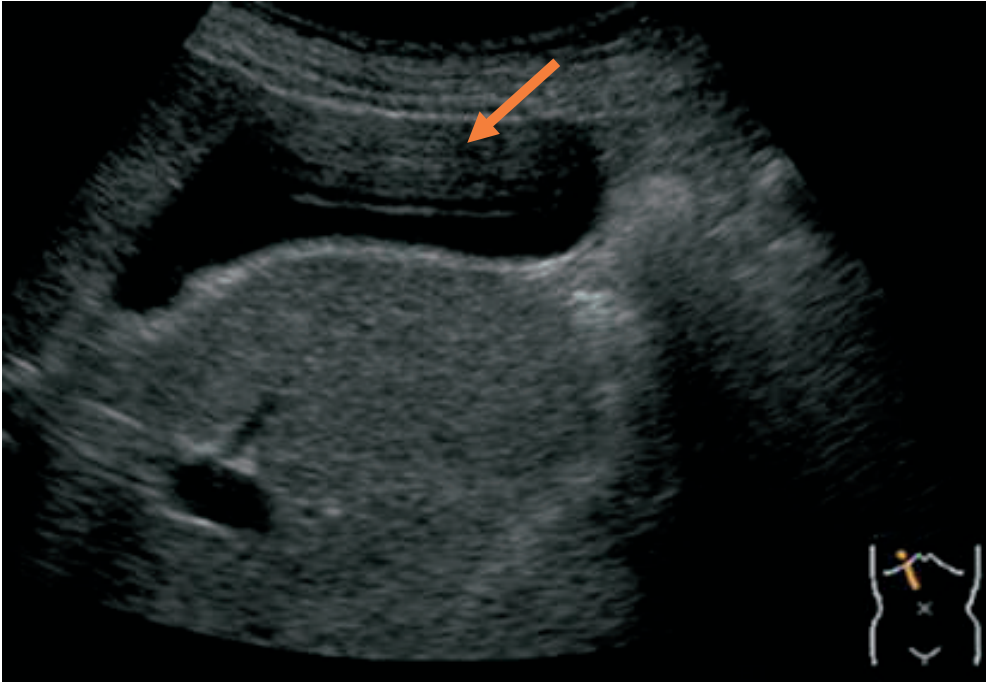
No. 1

(問題 17)



No. 2

(問題 20)

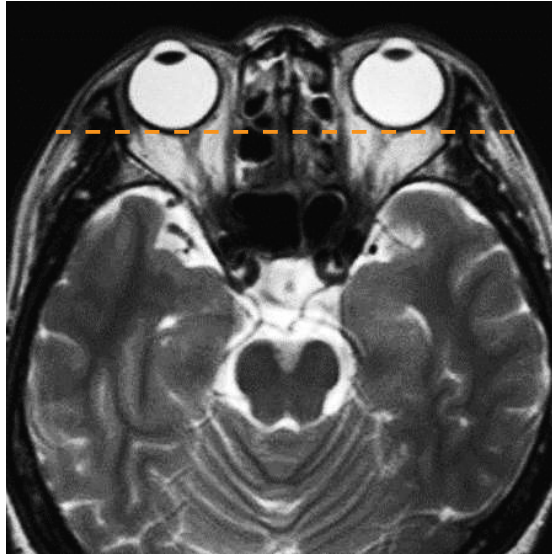




No. 4 A

(問題 22)

T₂強調横断像



No. 4 B

(問題 22)

T₁強調冠状断像



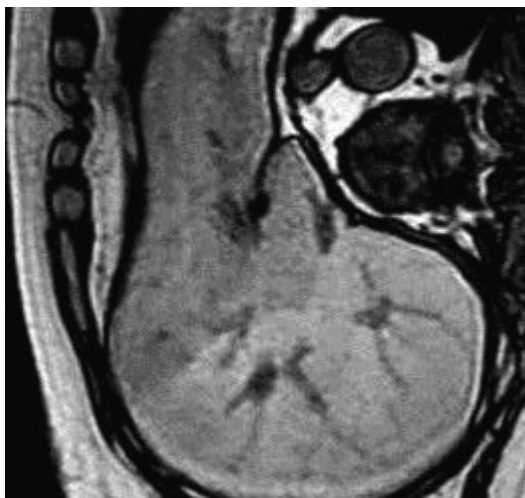
(問題 23)

No. 5

T₁強調像
(GRE法、in phase)



T₁強調像
(GRE法、opposed phase)



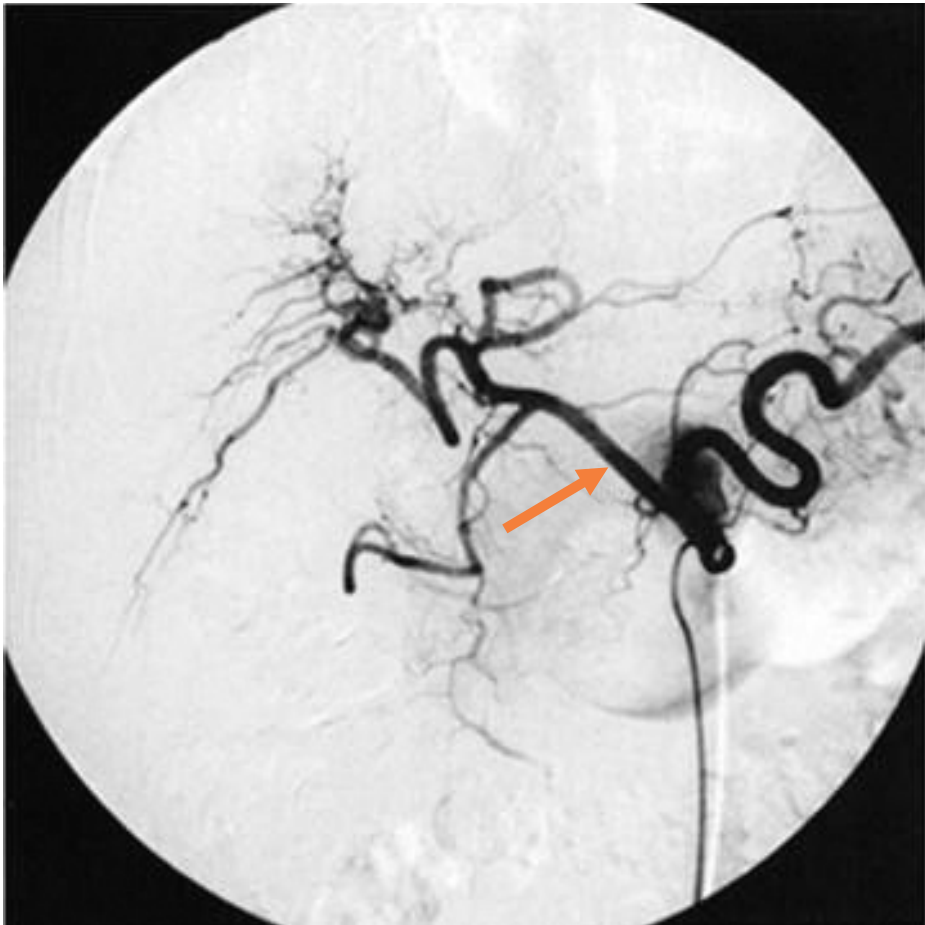
T₂強調像











No. 10

(問題 91)

