

65

午 前

別 冊

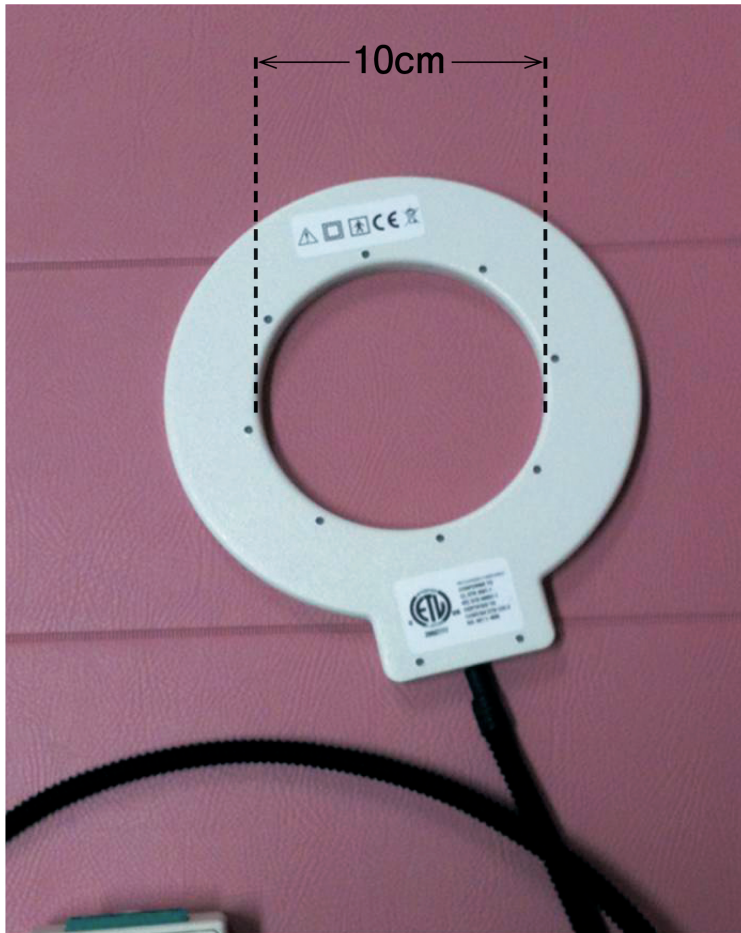






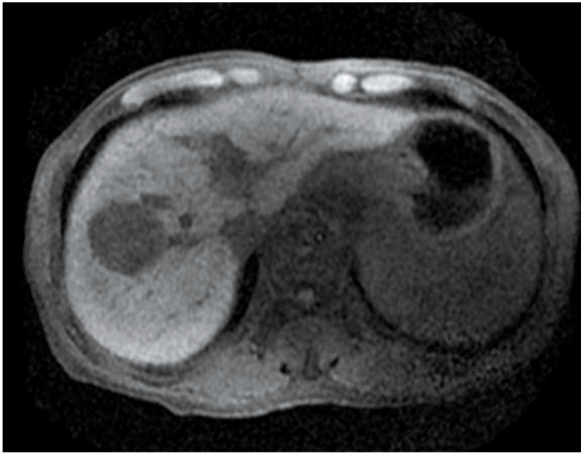
No. 1

(問題 23)

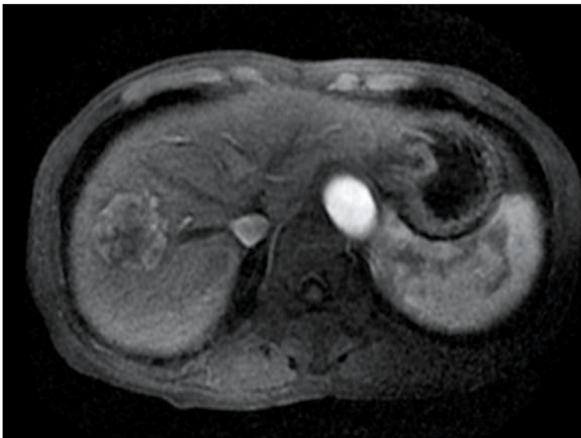


No. 2

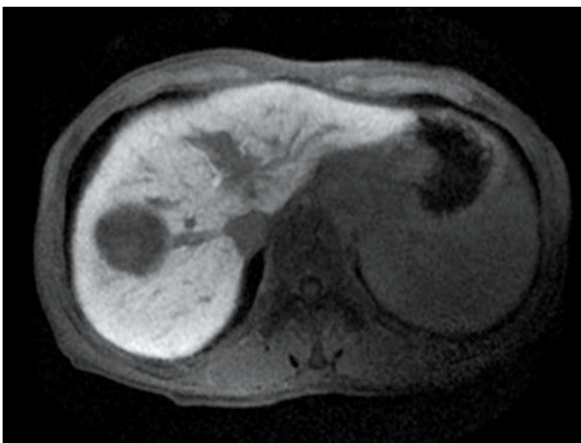
(問題 30)



造影前  
脂肪抑制T<sub>1</sub>強調像



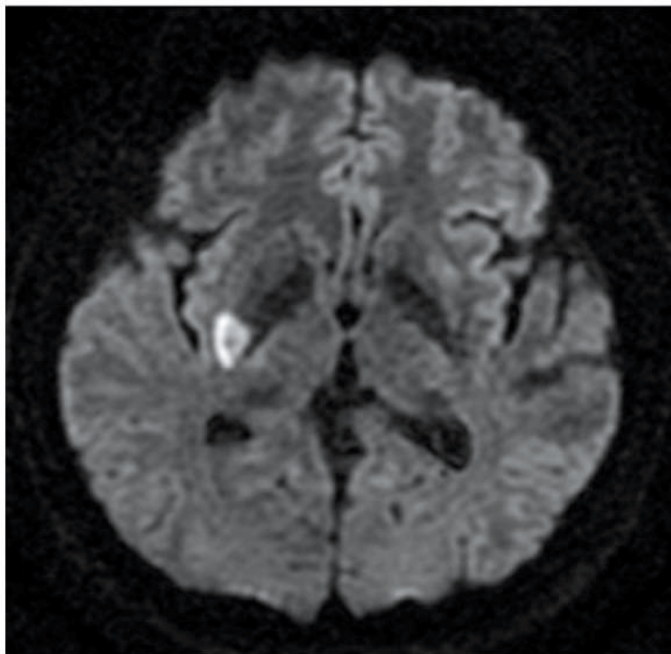
造影動脈相  
脂肪抑制T<sub>1</sub>強調像



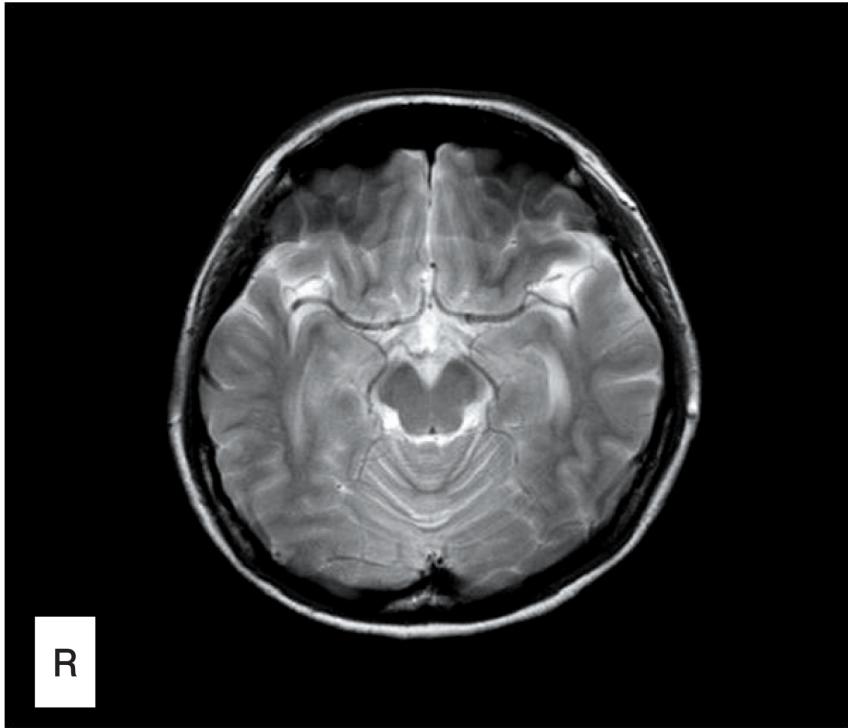
造影15分後  
脂肪抑制T<sub>1</sub>強調像



MRA像(前後投影像)



MR像(拡散強調像)





余 白

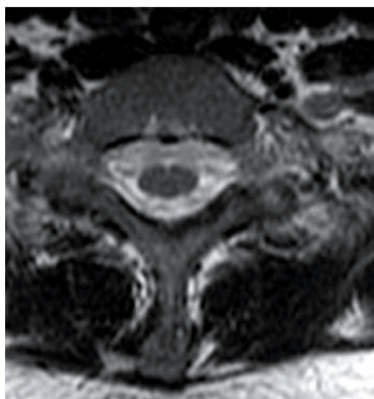




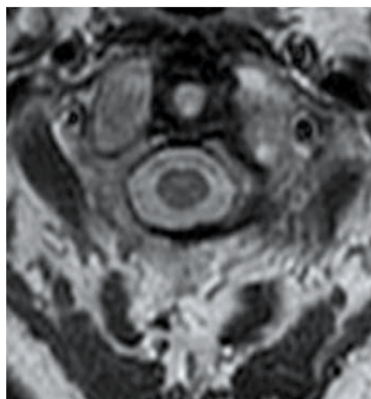
ア



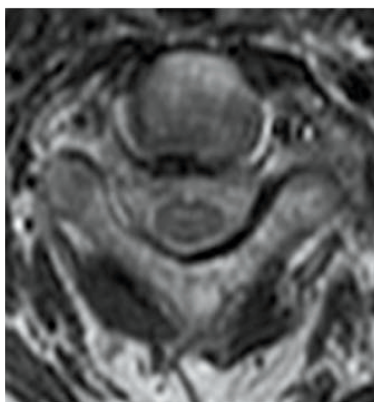
イ



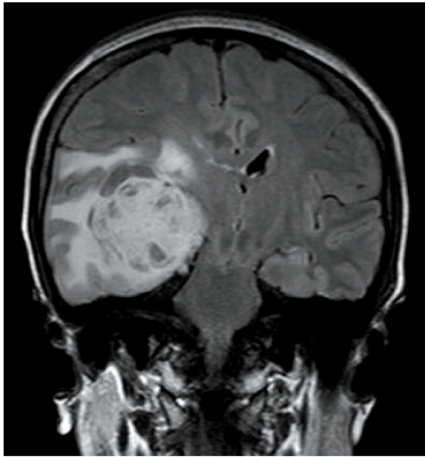
ウ



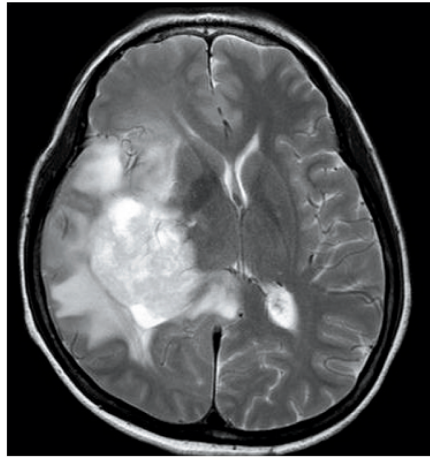
エ



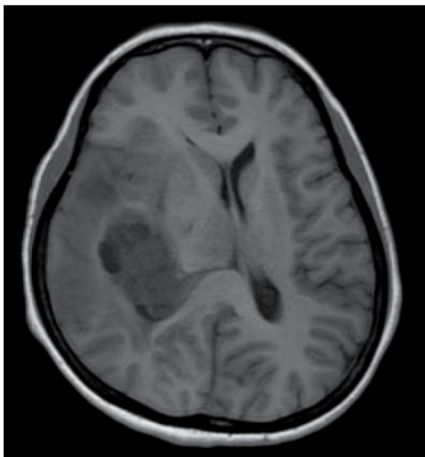
オ



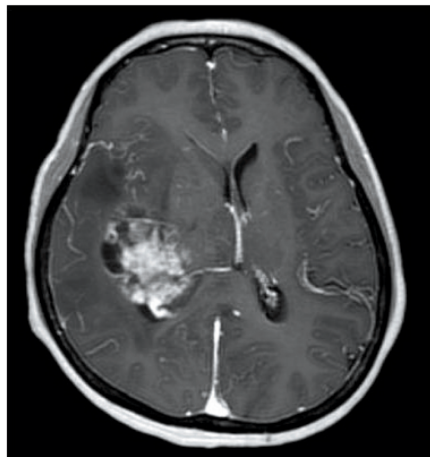
A



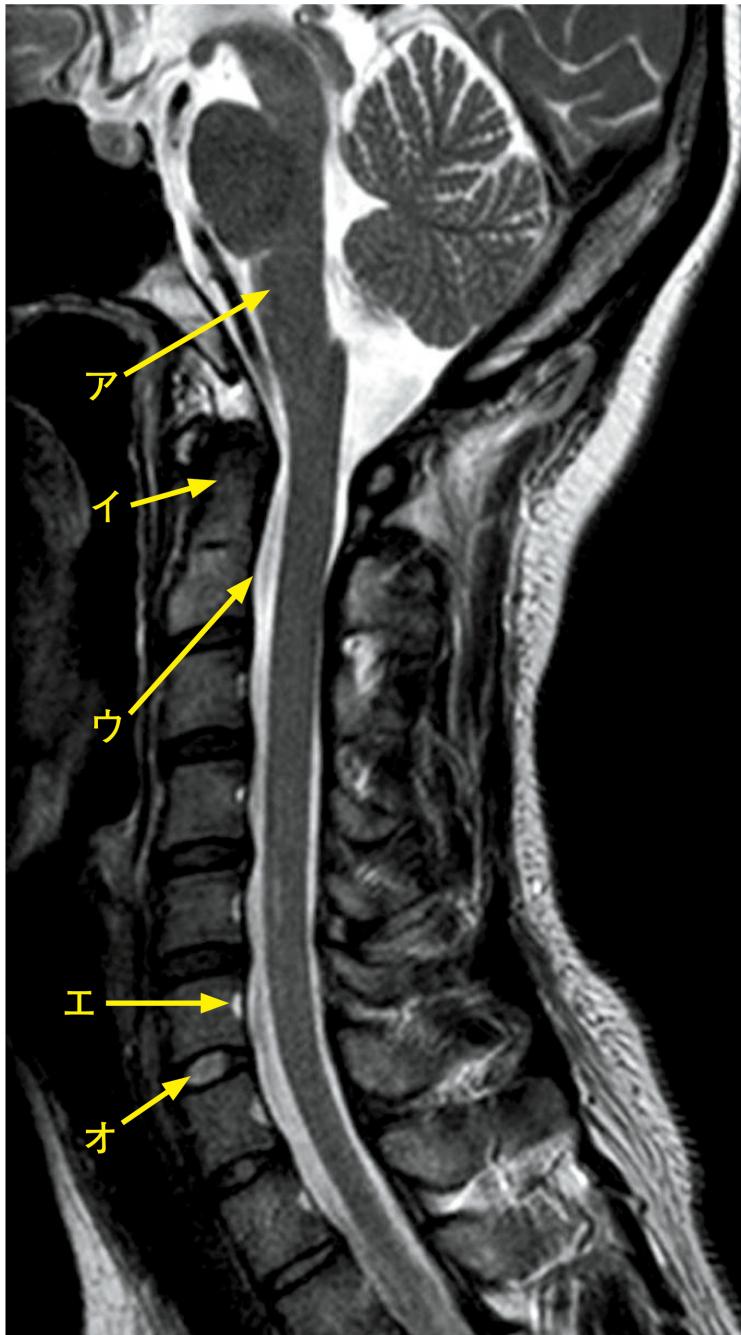
B

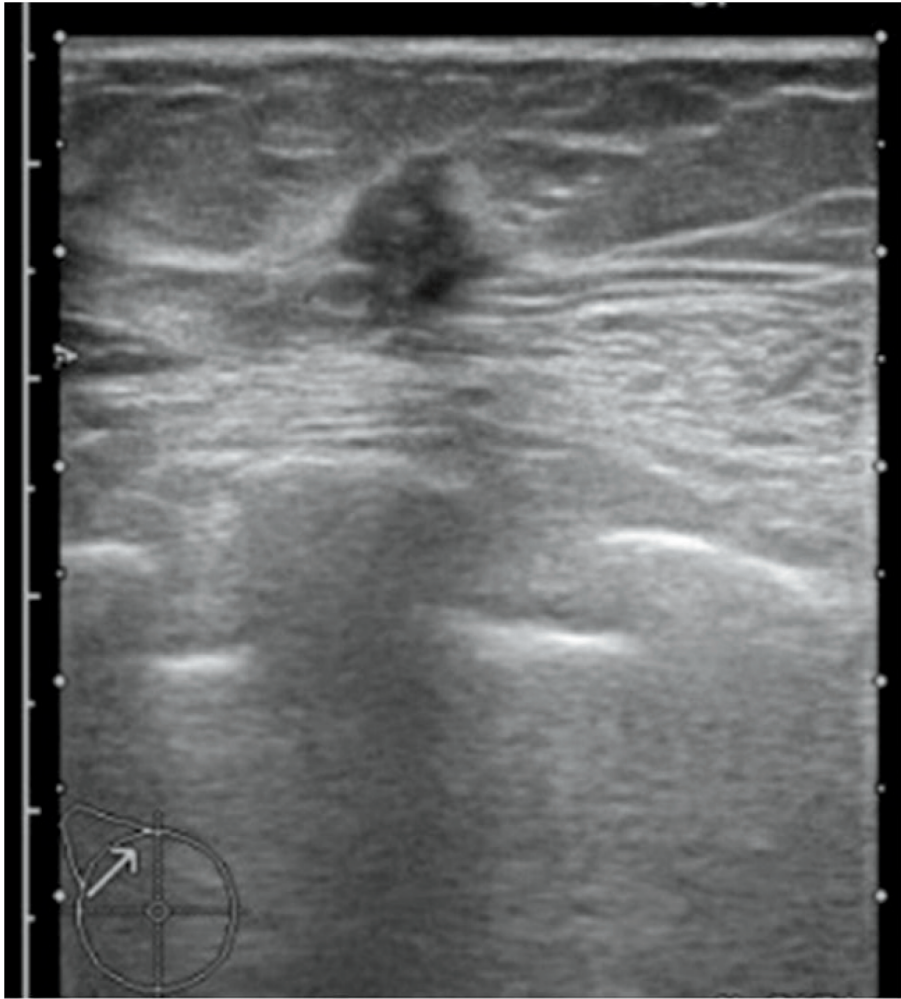


C



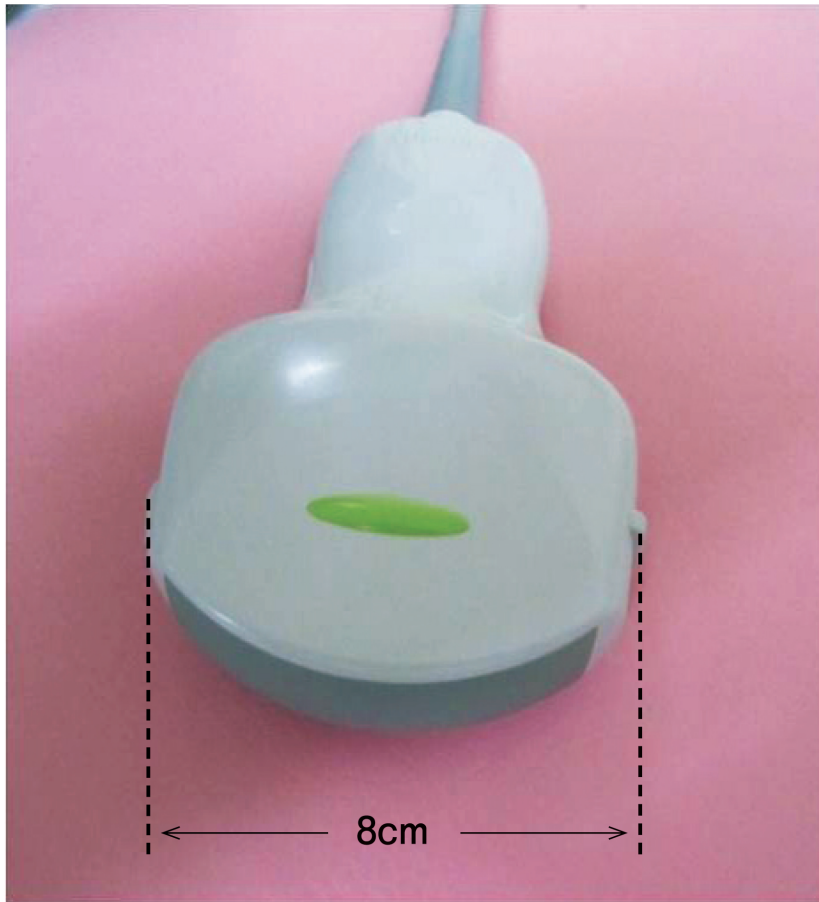
D





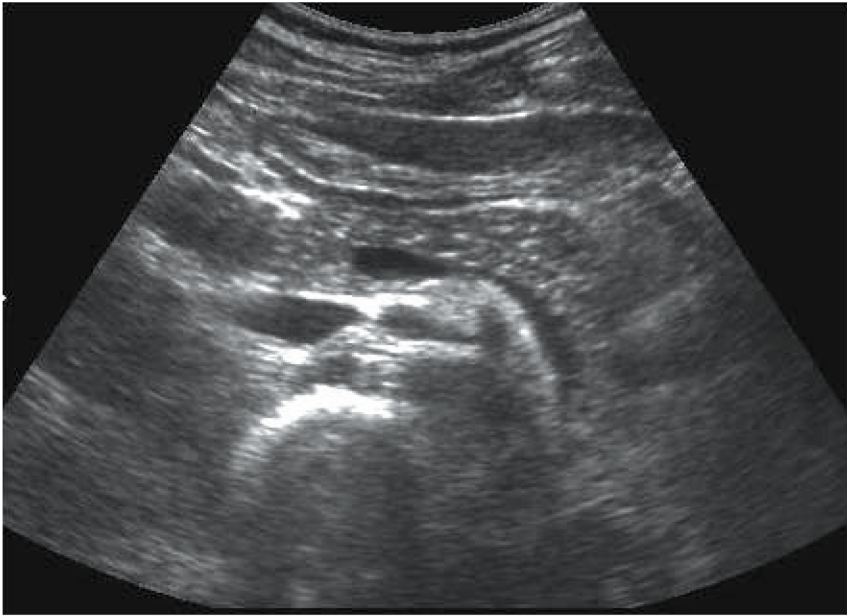
No. 9

(問題 45)



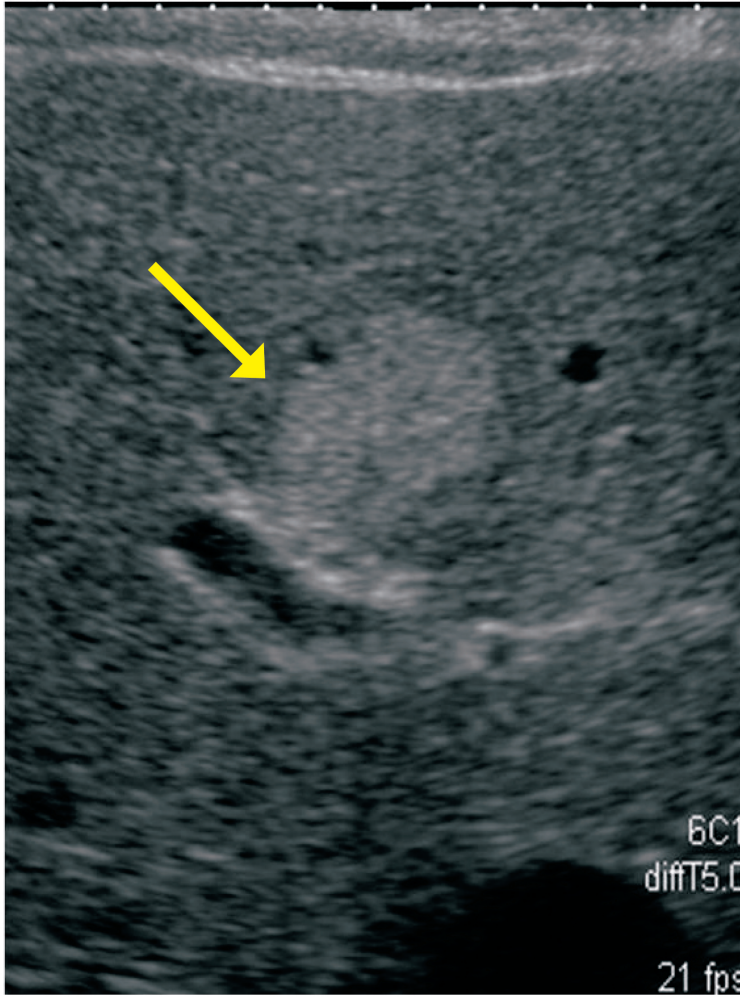
No. 10

(問題 46)

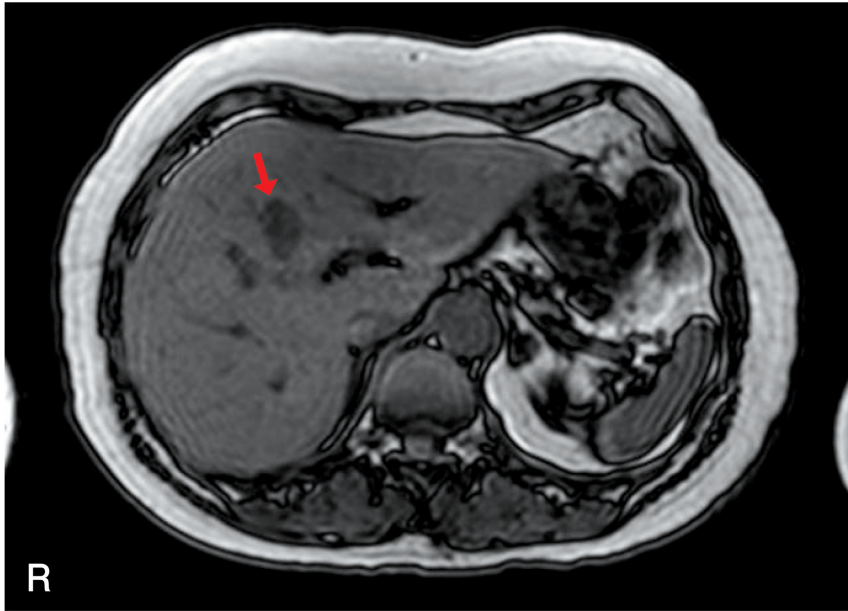




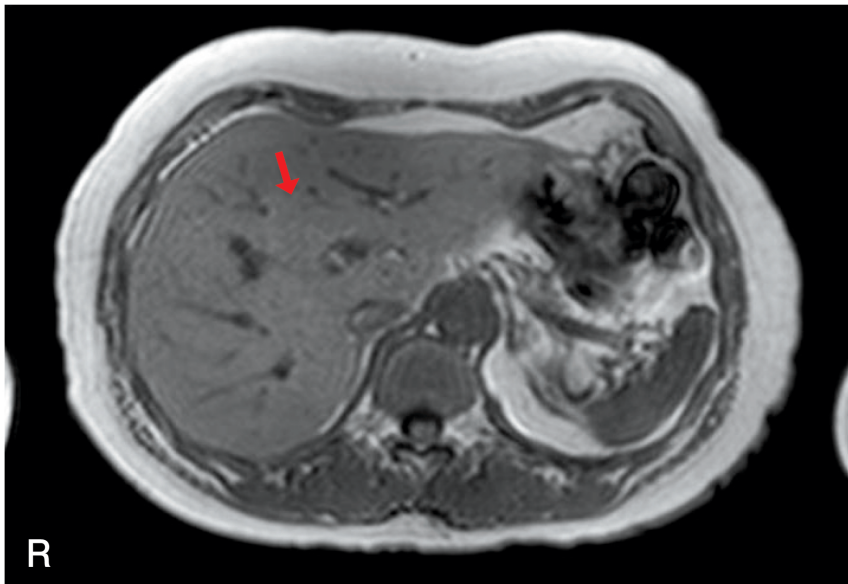
余 白



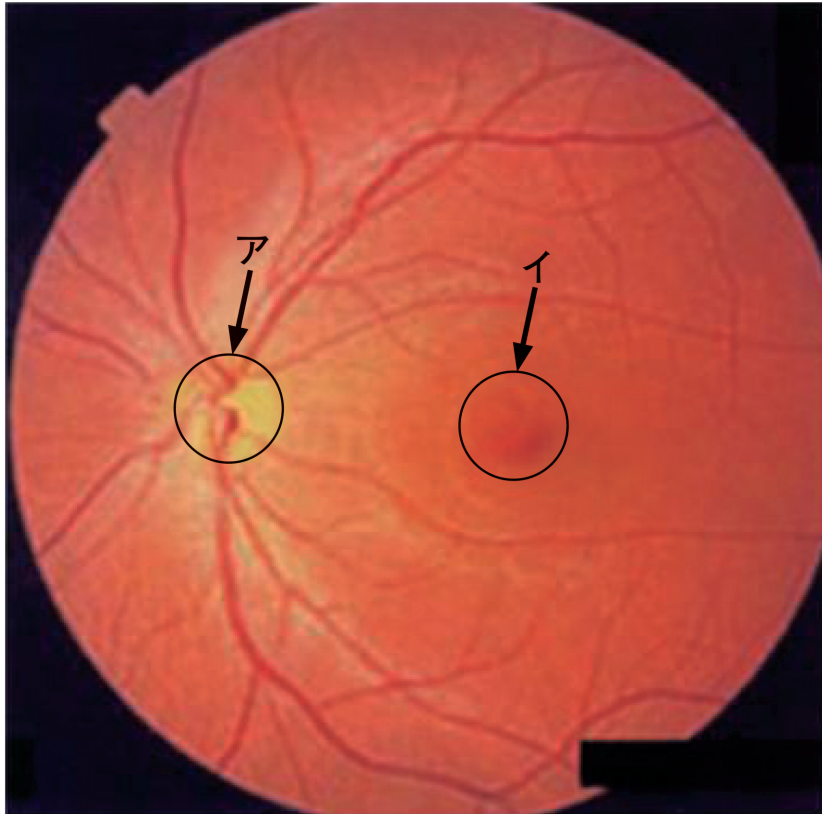
超音波画像



GRE法 T<sub>1</sub>強調  
opposed phase像(out-of-phase像)

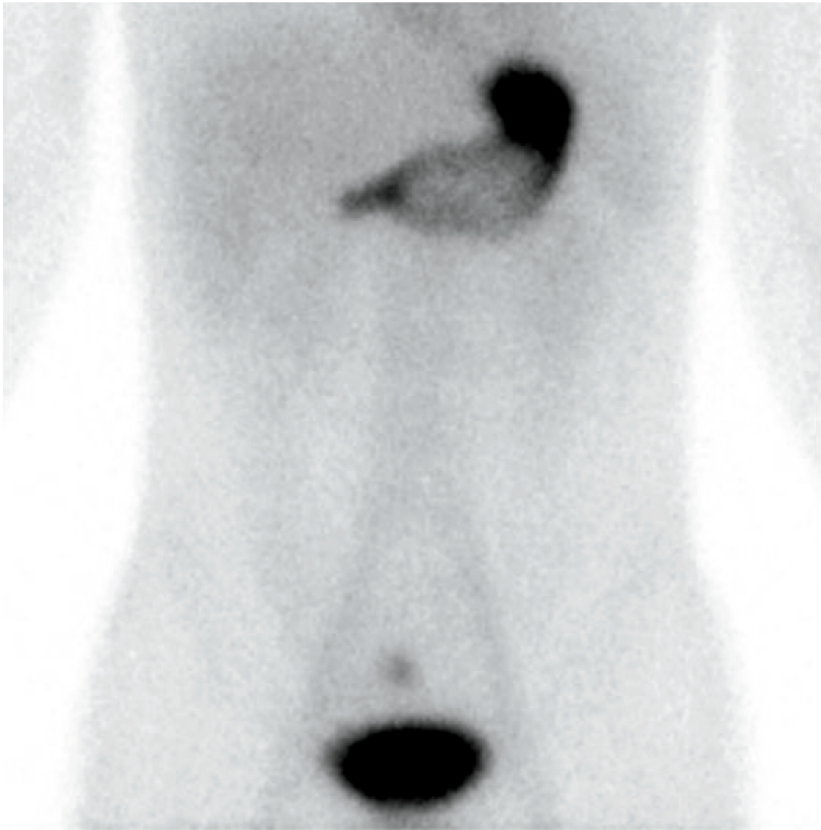


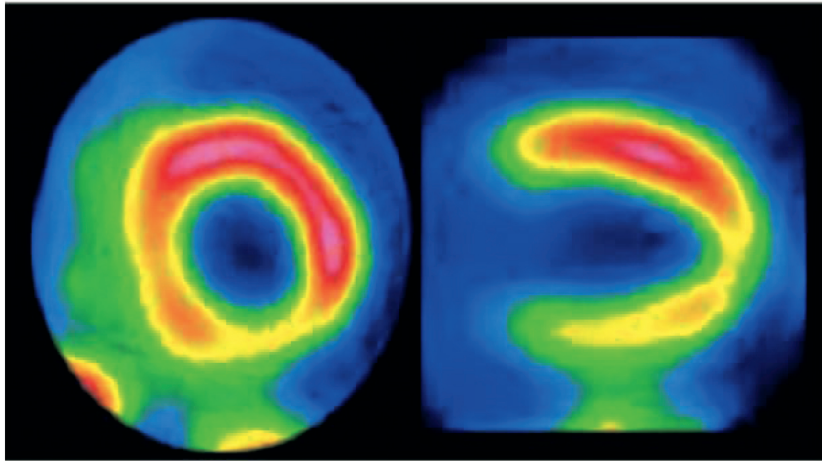
GRE法 T<sub>1</sub>強調in phase像



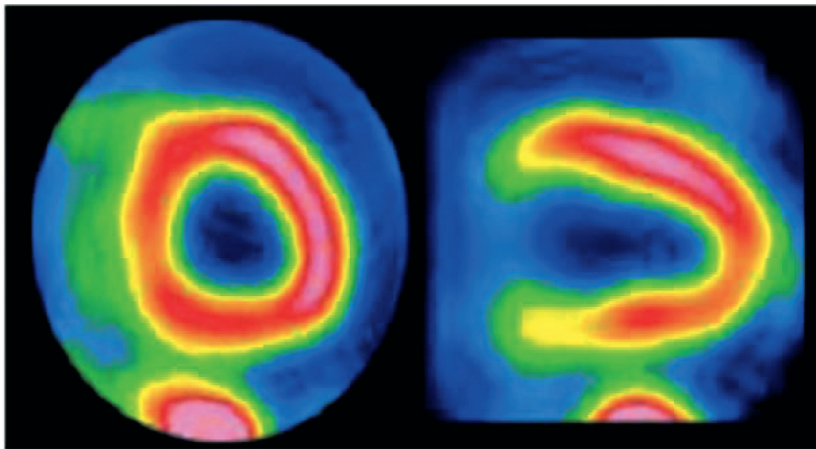
No. 13

(問題 52)





負荷時



安静時













