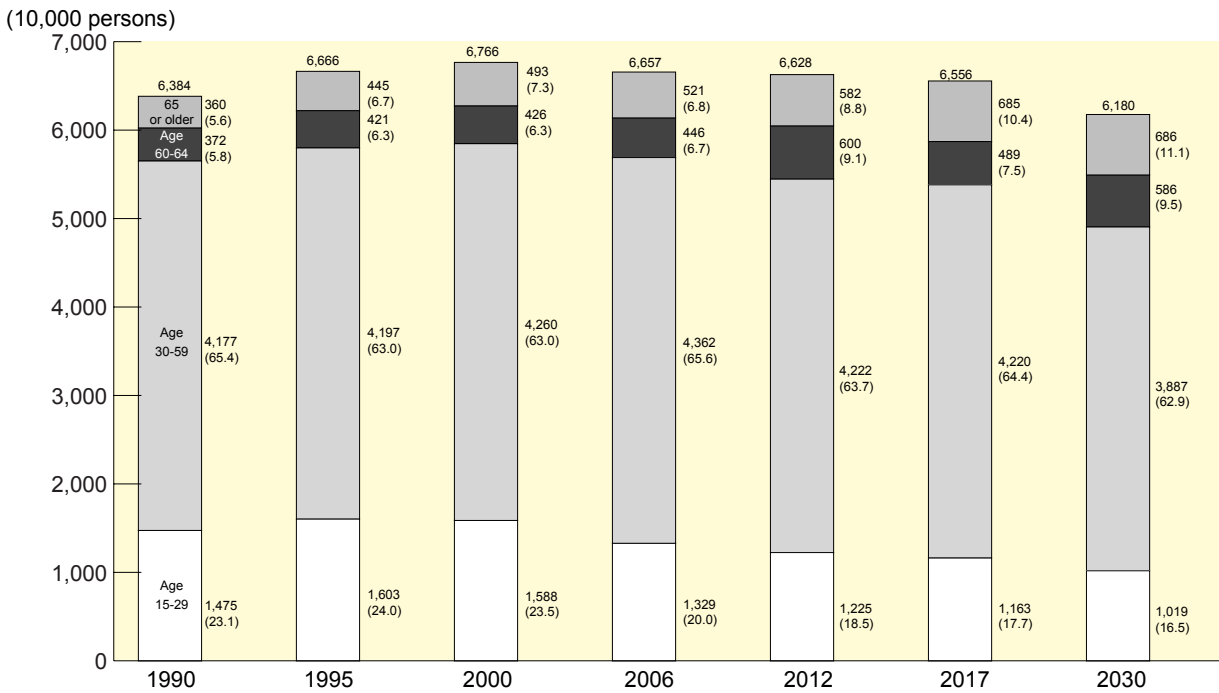


Basic Data on Labor Economy

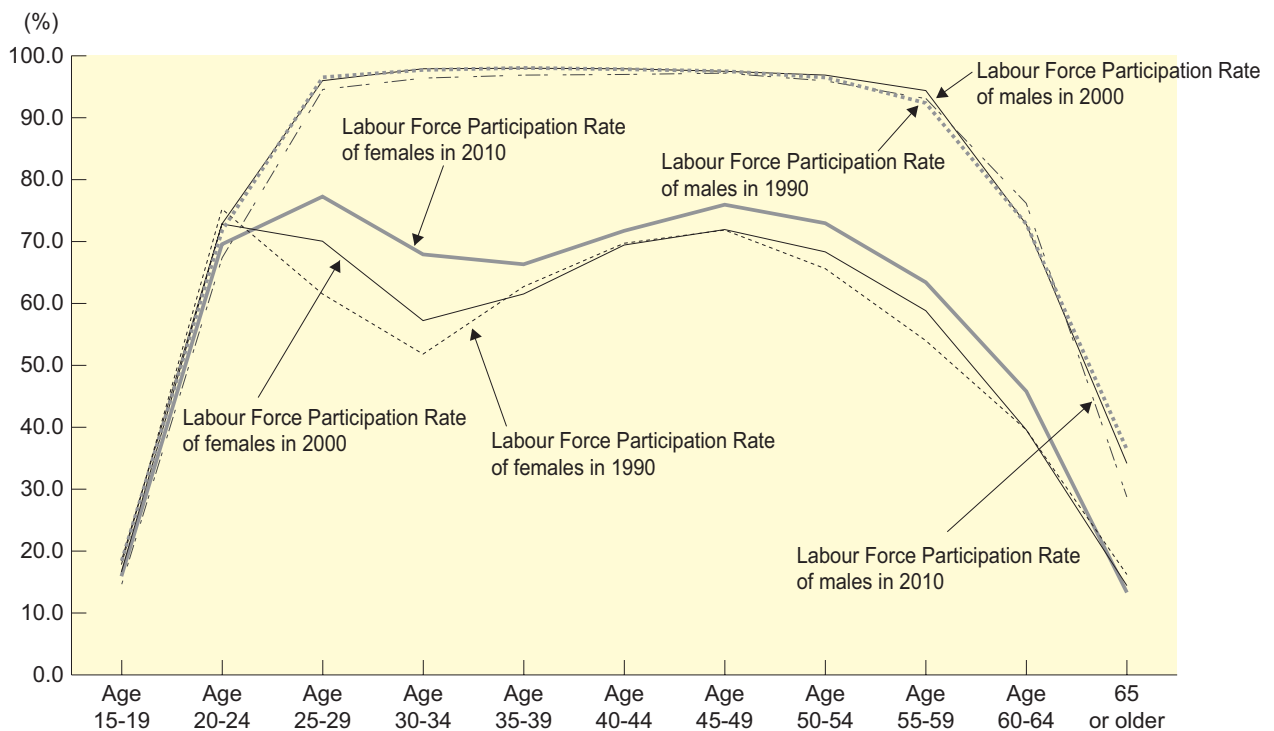
Detailed Data 1 Changes in Labour Force Population



Source: 1990, 1995, 2000, and 2006 - "Labour Force Survey", Statistics Bureau, Ministry of Internal Affairs and Communications
 From 2012 on - "2007 Projection of Supply and Demand of Labour Force", JILPT

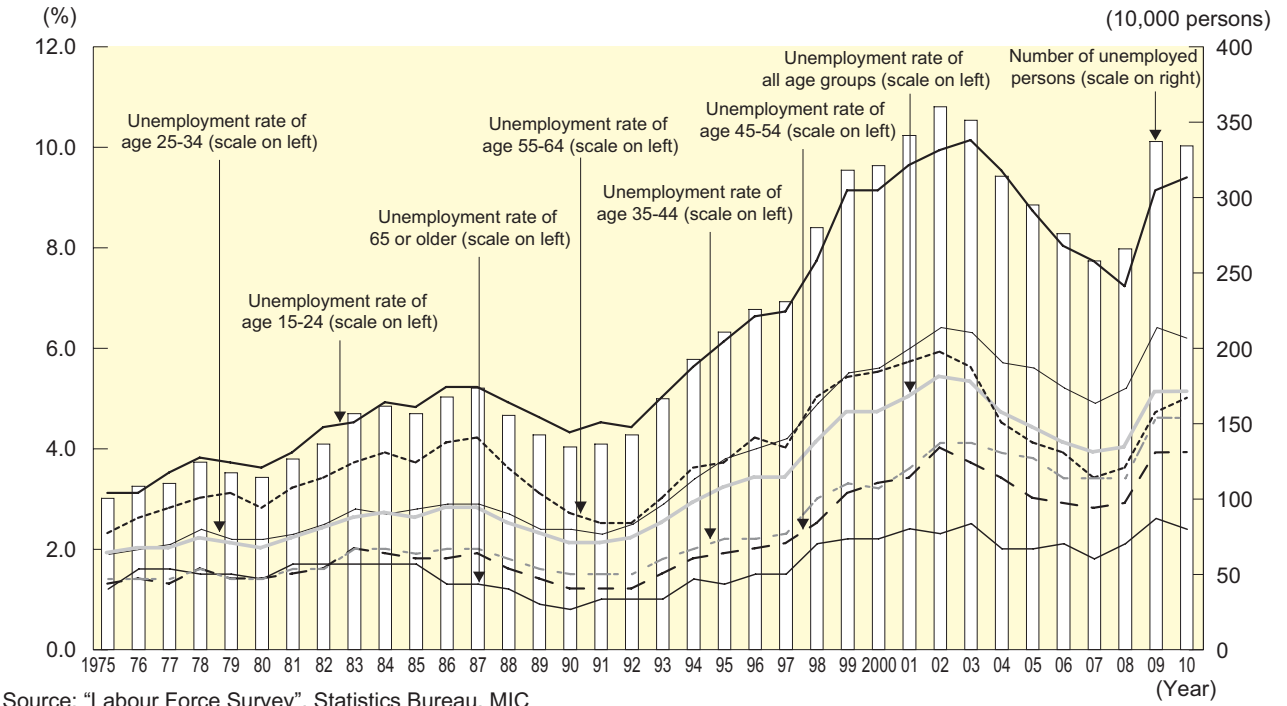
- (Note) 1. The figures in parentheses indicate percentage distribution.
- 2. The sum of the estimates for the age groups may not equal the total due to rounding.
- 3. The estimates are based on "Labour Force Survey" in 2006.

Detailed Data 2 Changes in Labour Force Participation Rates by Gender and Age Group

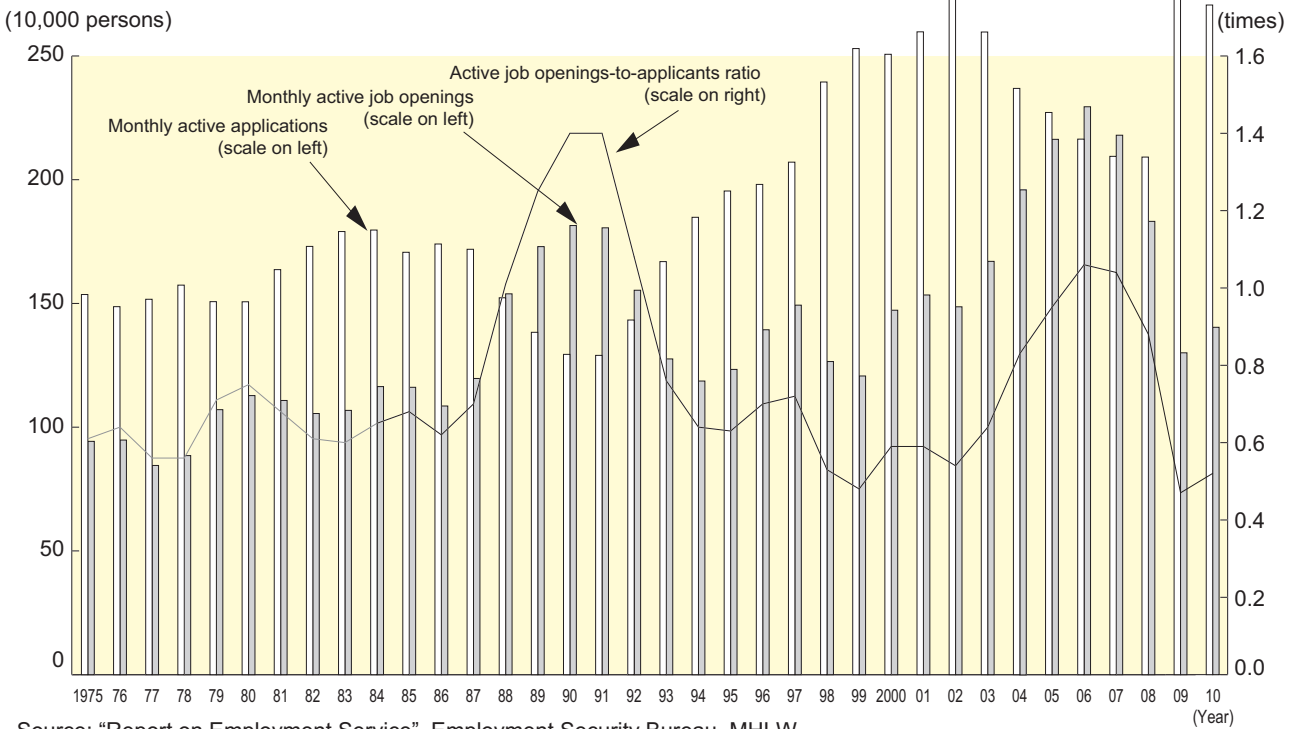


Source: "Labour Force Survey", Statistics Bureau, MIC

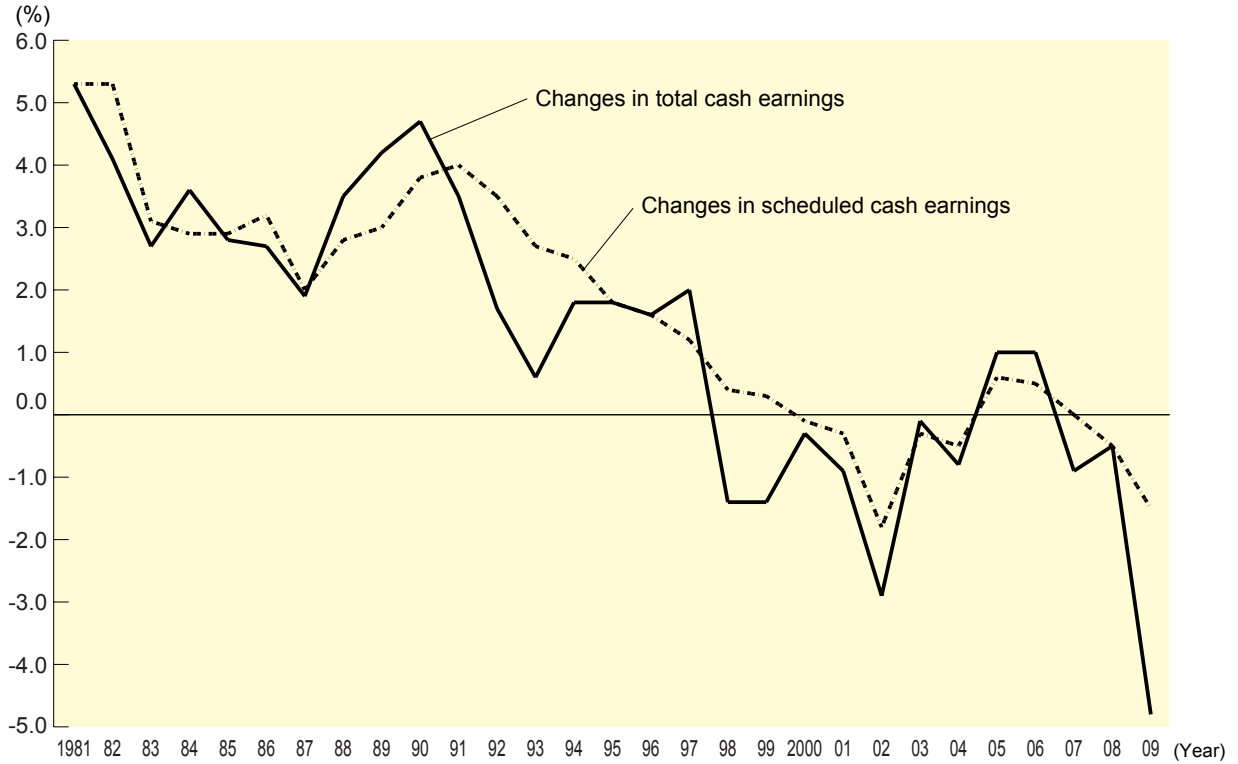
Detailed Data 3 Changes in Number of Unemployed Persons and Unemployment Rate by Age Group



Detailed Data 4 Changes in Job Openings, Applications, and Job Openings-to-applicants Ratio

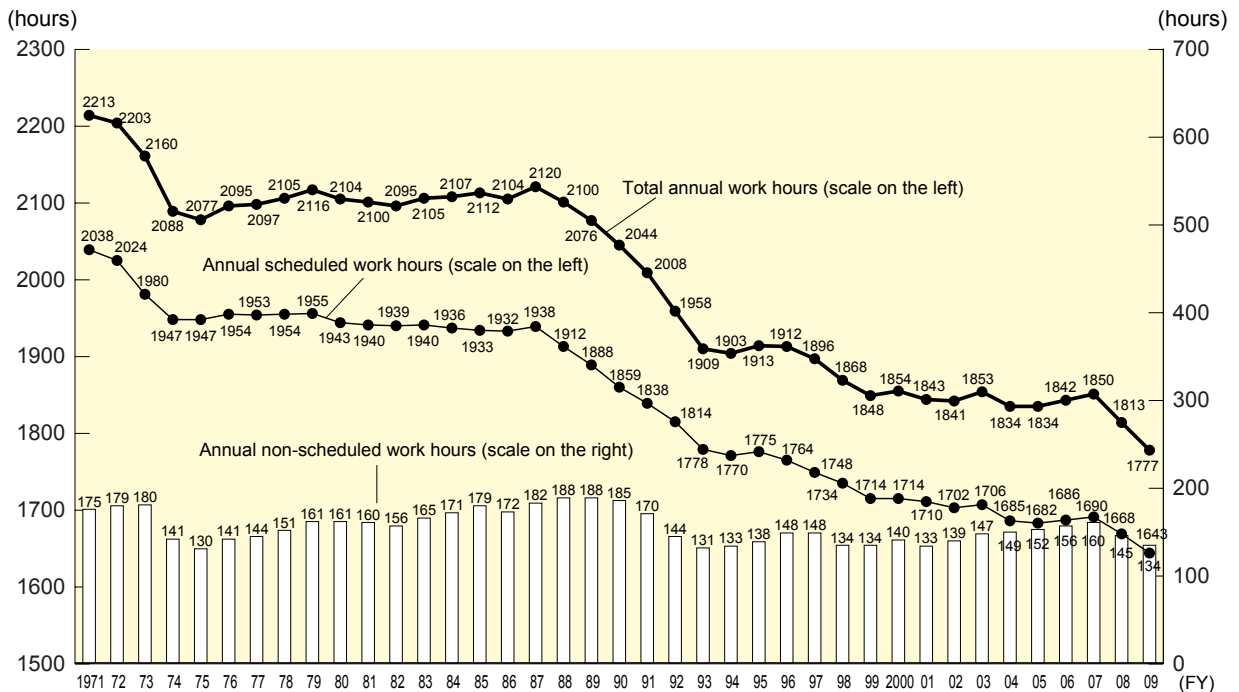


Detailed Data 5 Changes in Total Cash Earnings and Scheduled Cash Earnings



Source: "Monthly Labour Survey", Statistics and Information Department, Minister's Secretariat, MHLW
 (Note) Establishments with 30 employees or more.

Detailed Data 6 Changes in Annual Work Hours (establishments with 30 employees or more)



Source: "Monthly Labour Survey", Statistics and Information Department, Minister's Secretariat, MHLW
 (Note) 1. The figures were calculated by multiplying the monthly average by 12 and rounding to the whole number.
 2. The figures for annual non-scheduled work hours were calculated by subtracting annual scheduled work hours from total annual work hours.
 3. The figures before FY1983 were calculated by adding up the monthly figures.