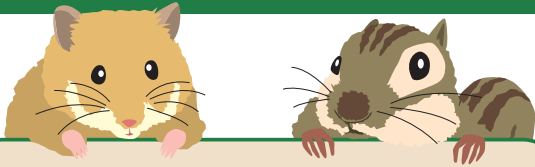


Required Documents

- Notification Form (2 copies)
- Health Certificate
(issued by the government authorities of the originating country)
- Identification of the Importer
(passport or driver's license)
- Copy of the Air Way bill
(not required for carry-on baggage)
- Microbiological Monitoring Report
(research rodents only)



Strict regulations on importing of "Rodents", such as Hamsters and Squirrels.

Hamsters, Guinea pigs, Squirrels and Chinchillas are classified as "Rodents".

Importing "Rodents" are enforced because "Rodents" are known to have a lot of serious infectious diseases that can be harmful to humans.

For rodents, the health certificate must verify that the animal was kept since birth in a storage establishment recognized by the government authorities. Rodents raised at home will not be regarded as a recognized storage establishment.

Importing rodent pets raised overseas or purchased from overseas pet shops are subject to these regulations. As health certificates issued by government authorities may be difficult to obtain for such animals, in general, these animals cannot be imported to Japan.

❖ Quarantine animals, such as Dogs, Cats and Domestic animals are not covered by this law.

Please refer to the Animal Quarantine Service, MAFF websites.
<http://www.maff.go.jp/aqs/>

❖ Please refer to the following websites for more information

<http://www.mhlw.go.jp/english/topics/importanimal/index.html>
<http://iaa.keneki.jp/>

❖ Contact Us

Narita Airport Quarantine Station (Office of Import Animal Administration)

TEL +81-476-32-6708
FAX +81-476-32-6725

Chubu Airport Quarantine Branch, Nagoya Quarantine Station (Quarantine and Sanitary division)

TEL +81-569-38-8192
FAX +81-569-38-8194

Kansai Airport Quarantine Station (Office of Import Animal Administration)

TEL +81-72-455-1298
FAX +81-72-455-1299

Fukuoka Airport Quarantine Branch, Fukuoka Quarantine Station (Quarantine and Sanitary division)

TEL +81-92-477-0207
FAX +81-92-477-0209

A list of quarantine stations for other airports can be found here:

<http://www.mhlw.go.jp/english/topics/importanimal/index.html>

Bringing Animals into Japan



Procedures governing the importation of animals

In order to prevent outbreaks of human infectious diseases caused by imported animals, the Law Concerning the Prevention of Infectious Diseases and Medical Care for Patients of Infectious Diseases (Article 56-2) regulates the importation of animals into Japan. Please be aware that noncompliance with this regulation will result in the denial of entry or euthanization of the animal.

Animals covered by this law

Mammals

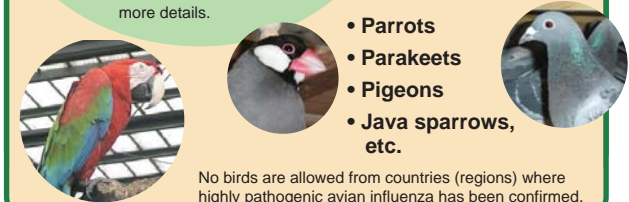
- Ferrets
- Hamsters
- Guinea pigs
- Squirrels, etc.



Dogs and Cats are not covered by this law. Please contact the Animal Quarantine Service for more details.

Birds

- Parrots
- Parakeets
- Pigeons
- Java sparrows, etc.



No birds are allowed from countries (regions) where highly pathogenic avian influenza has been confirmed.

Quarantine Station
Ministry of Health, Labour and Welfare

Pre-confirmation

Upon Arrival In Japan



Warning:
Animals without Health Certificates issued by the proper government authorities of the exporting country will be denied entry into Japan.

REFERENCE NUMBER

**VETERINARY HEALTH CERTIFICATE
EXPORT OF BIRDS (WITH THE
EXCEPTION OF POULTRY) TO JAPAN**

ORIGIN OF BIRDS—Japanese pigeons returning to Japan

II. DESTINATION OF BIRDS
 Name of Consignee
 Address
 Name of House of Origin
 Name of Consignee
 Date of Issuance

III. SANITARY INFORMATION
1. To be filled in only when the birds are not of the Japanese origin.
 2. To be filled in only when the birds are of the Japanese origin and are not of the Japanese origin.
 3. To be filled in only when the birds are of the Japanese origin and are not of the Japanese origin.

IV. IDENTIFICATION OF BIRDS

NO.	SEX	AGE	MARKS	REMARKS

Official Seal + Stamp Name of Official Veterinarian Signature of Official Veterinarian Address of Official Veterinarian