

# Pretreatment of waste for the interim treatment (Example)

## Wastes requiring crushing (Example)

### Debris



Combustible waste is separated from incombustible waste at the temporary storage site and transported to the pretreatment facility for crushing.

①

### Plants, wood materials



Plants and wood materials are packed in plastic rolls and transported to the pretreatment facility where they are weighed, their wrapping material is removed and they are cut with a cutting machine or a chipper.

### Large sized wastes

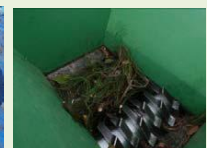


Large combustible waste is roughly sorted out at the temporary storage site and transported to the pretreatment facility for crushing.

②



Transporting to the pretreatment facility in sealed flexible container bags.



Opening the bags to take out the wastes which are crushed with a crusher.

## Wastes not requiring crushing (Example)

### Household garbage

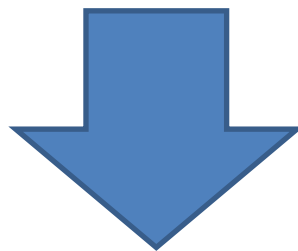


Transported in flexible container bags or garbage bags. Transportation in garbage trucks is also assumed.

### Sludge



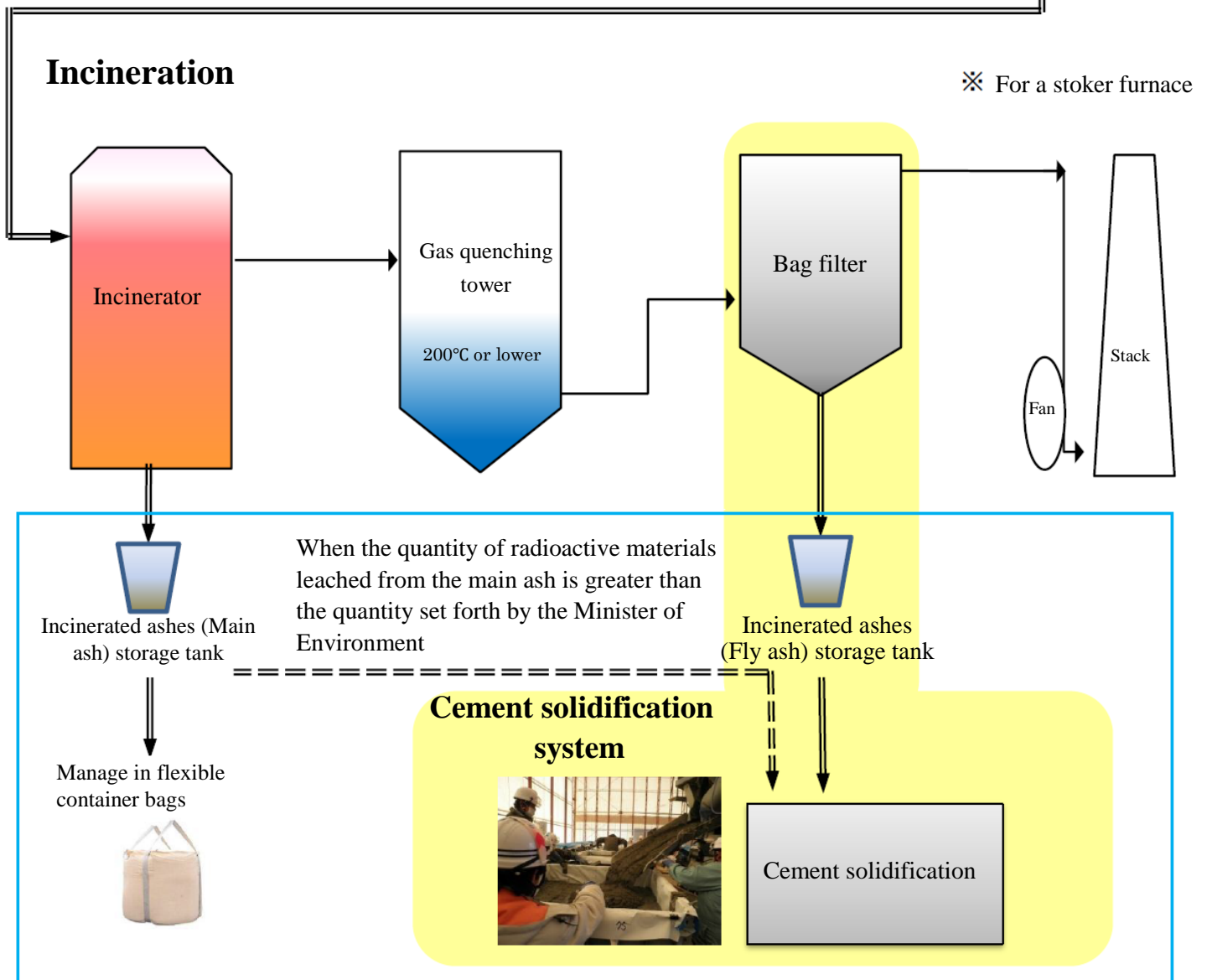
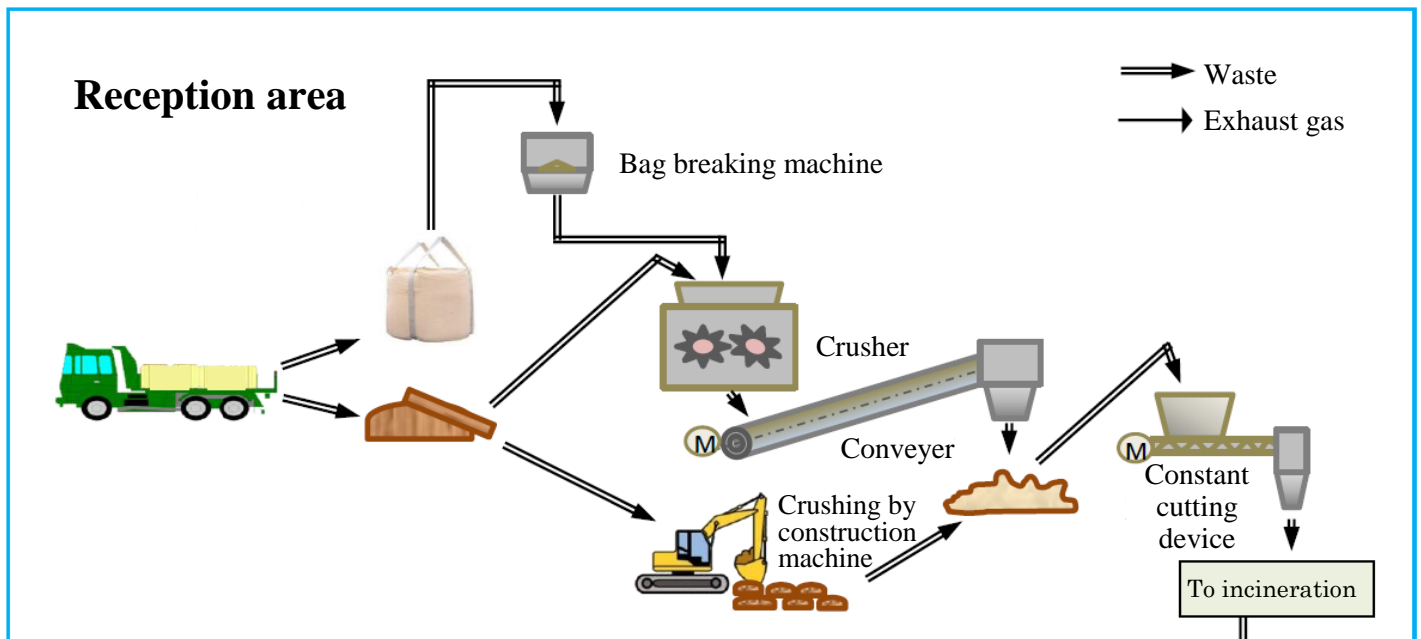
Transported in sealed flexible container bags. The bags are emptied and their contents fed into an incinerator.



## Mixing of wastes

- Maintain as constant heat generation as possible for stable operation of the incinerator by mixing the wastes to adjust their calorific value

# Flow of incineration process (Example)



Unsealed radiation source handling area

Areas where wastes with relatively high radioactivity concentration are likely to be handled